

Promoting dignity, quality of life, and health outcomes for underserved populations
and addressing ethnicity and poverty effects on preferences and care

Stacy M. Fischer, MD
University of Colorado, School of Medicine

Disclosures

Case Presentation



Community Participatory Action Methods

- Surveys from a diverse patient population
- Focus groups
- Key Informant Interviews
- Stakeholder panels of community members and experts

What did we learn

- Key areas of focus
 - Advance care planning
 - Pain management
 - Hospice
- Core values to incorporate into an intervention
 - Familia
 - Confianza
 - Personalismo
 - Fatalismo
- Additional cultural tailoring

Patient Navigation to Improve Palliative Care Outcomes for Latinos with Advanced Illness



- Questions to be answered
 - Can it be done?
 - Does it help patients and their families?

Study Overview

- Funded by the American Cancer Society (RSG-12-182-01-PCSM)
- Randomized Controlled Trial involving 223 Latino adults (≥ 18 years) with advanced (Stage III or IV) cancer
- Control group receives culturally tailored, linguistically appropriate materials covering the palliative care domains of interest
- Intervention receives same materials plus ~5 home visits from a patient navigator

Patient Navigator Intervention

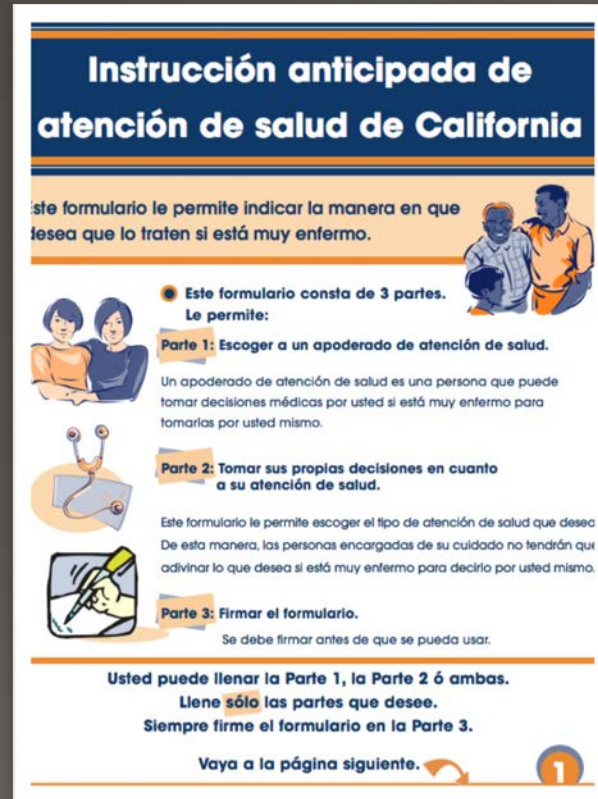
- 5 home visits to deliver the intervention
- Culturally tailored discussions focusing on
 - Advance care planning
 - Pain and symptom management
 - Hospice
- Grounded in core Latino values
- Developed in partnership with a Community Advisory Panel



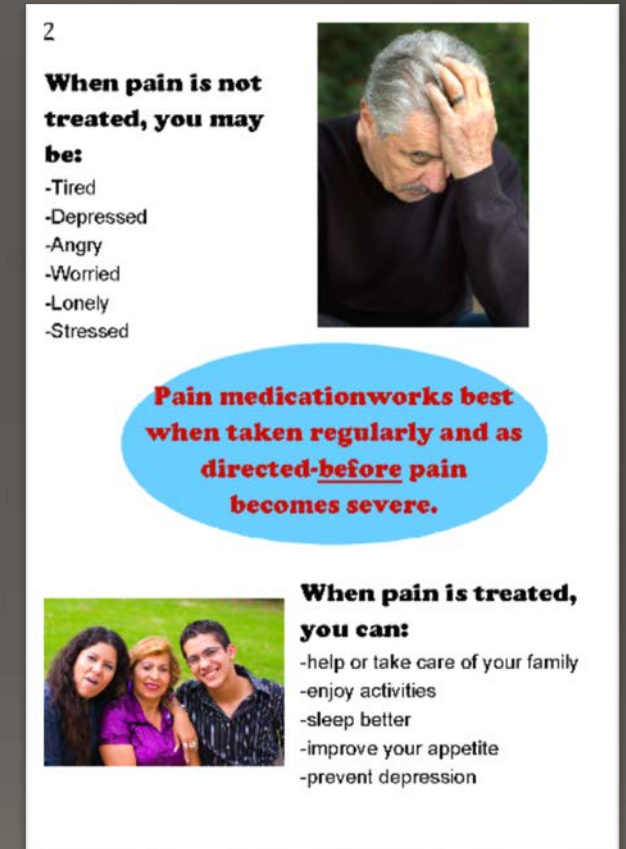
Examples of Written Materials



Hospice brochure



Advance directive



Page of pain brochure

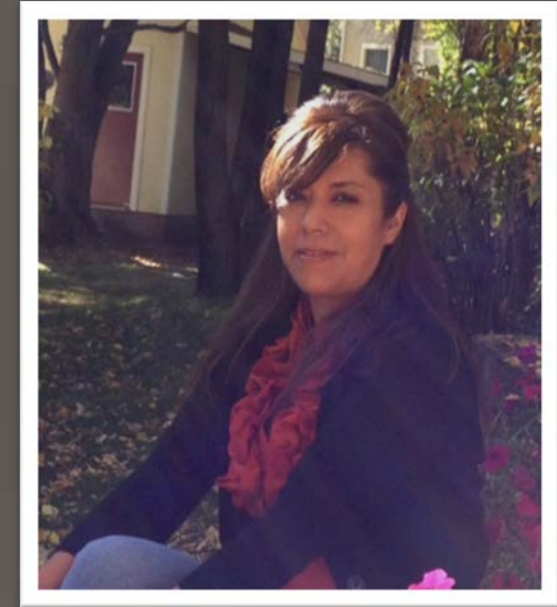
Meet our Navigators



Rose Martinez
Alamosa



Claudia Camacho
Denver

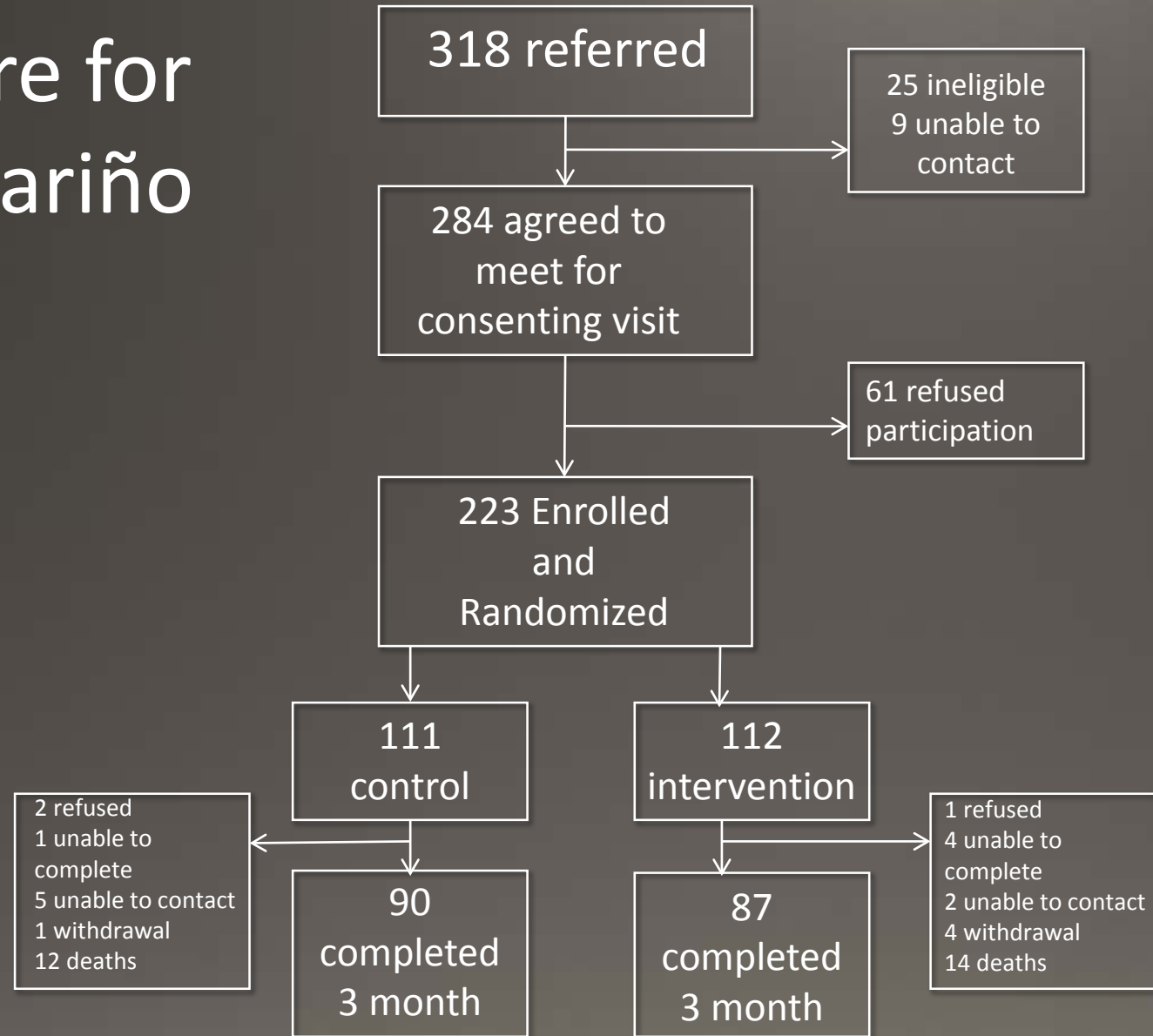


Diane Pacheco
Western Slope



Danielle Kline
Project Manager—Supports Navigators

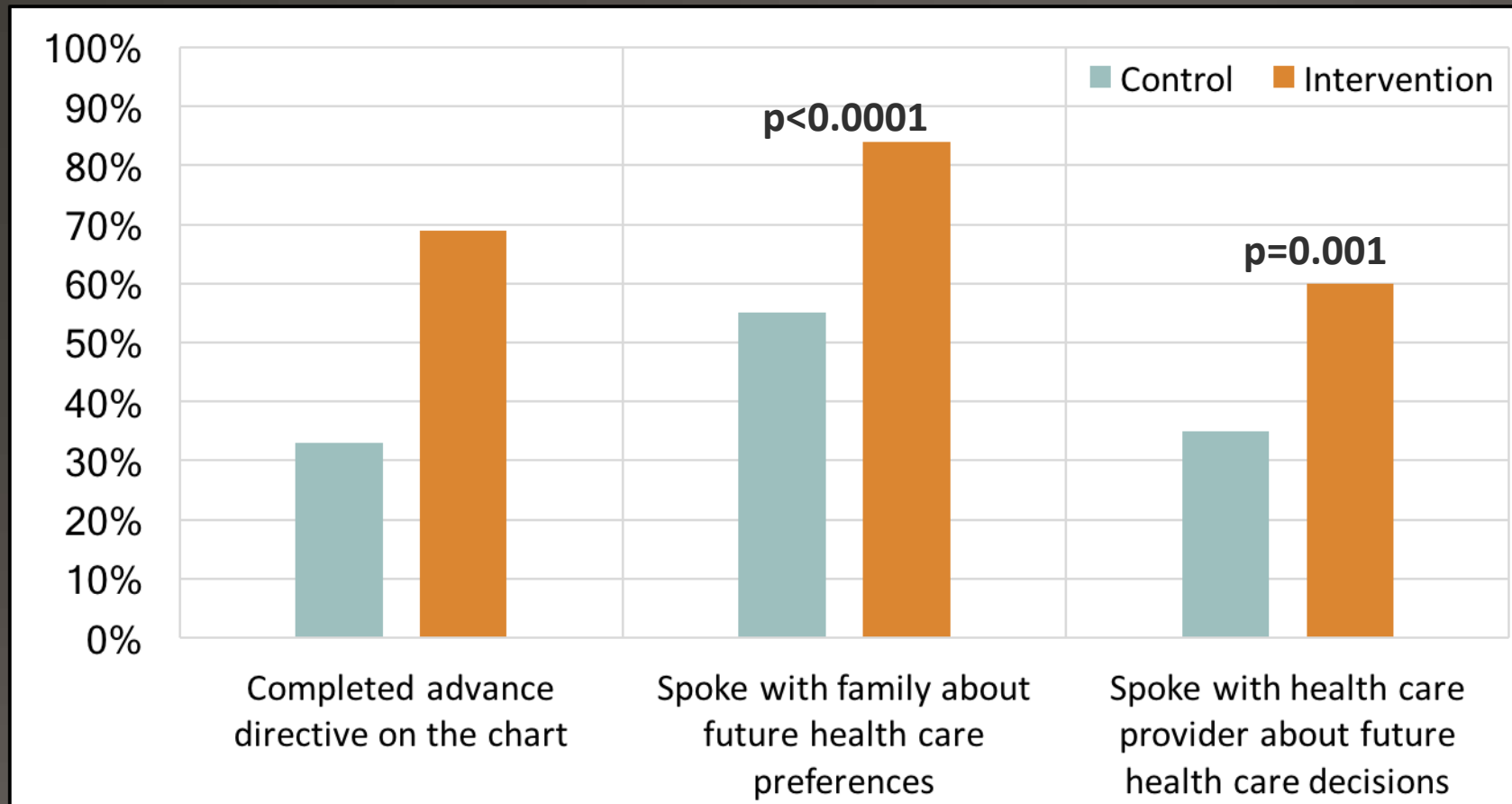
Accrual Figure for Apoyo con Cariño



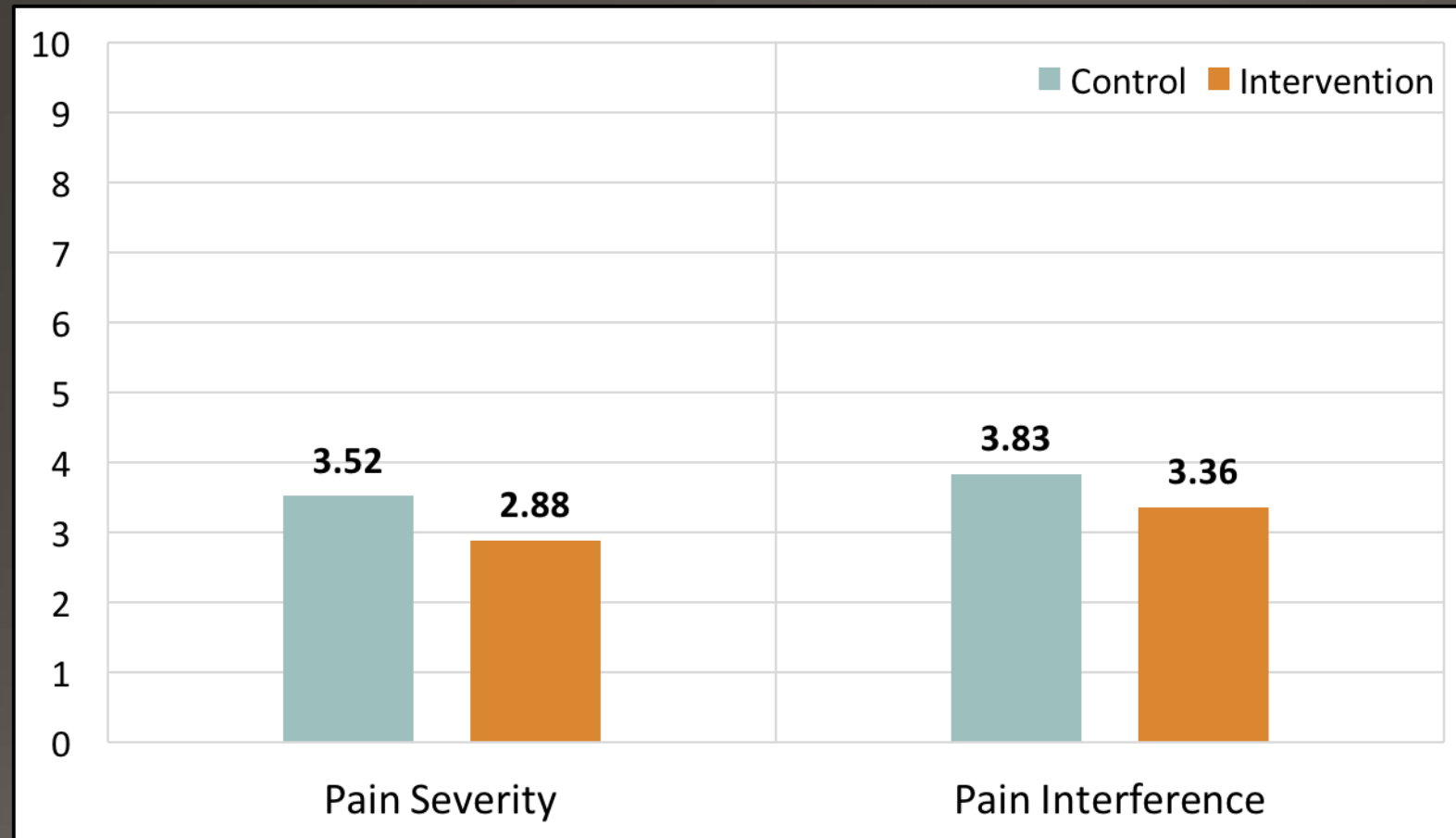
Demographics Baseline

Mean age in years	58.1 ± 14
Female gender	55.6% (124)
Spanish speaking	47.5% (106)
US born	54.3% (121)
Married	55.6% (124)
Currently employed	11.8% (26)

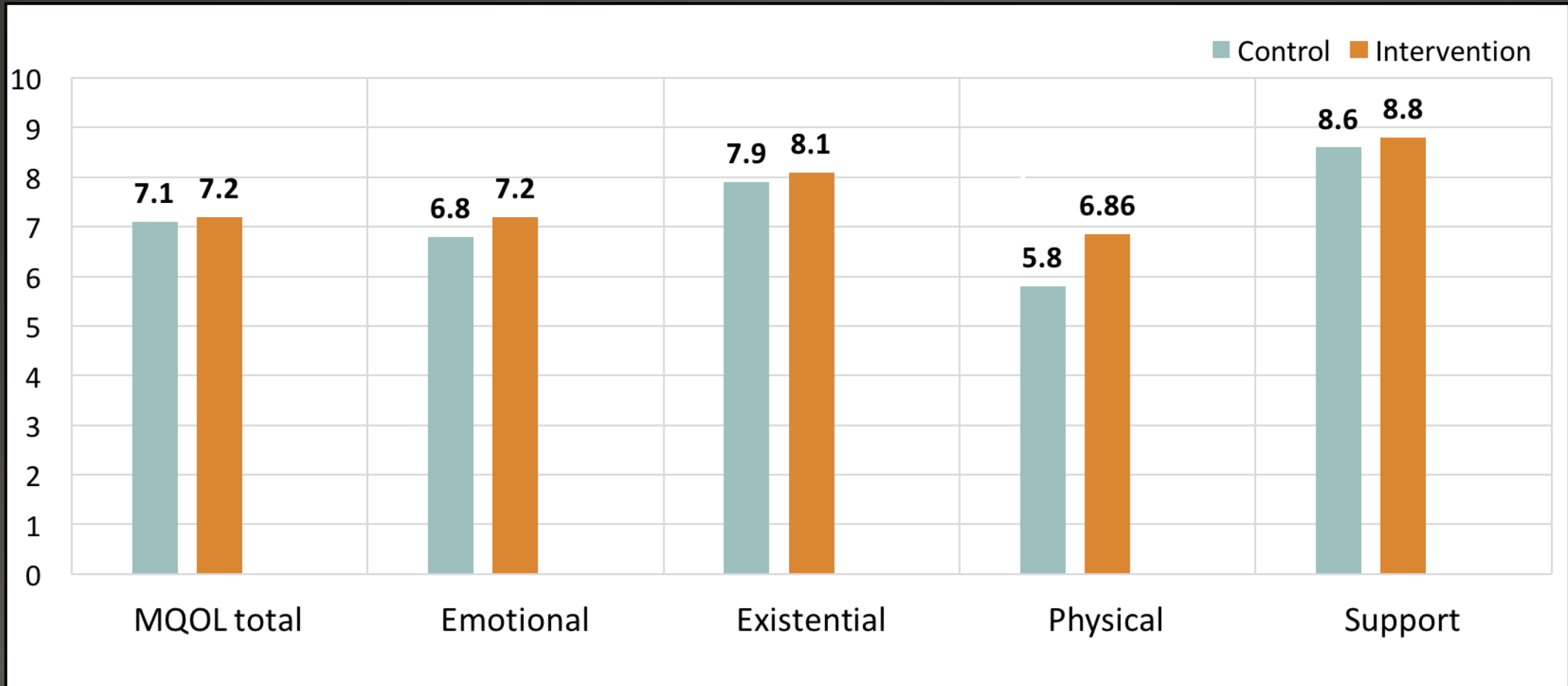
Results: Advance Care Planning



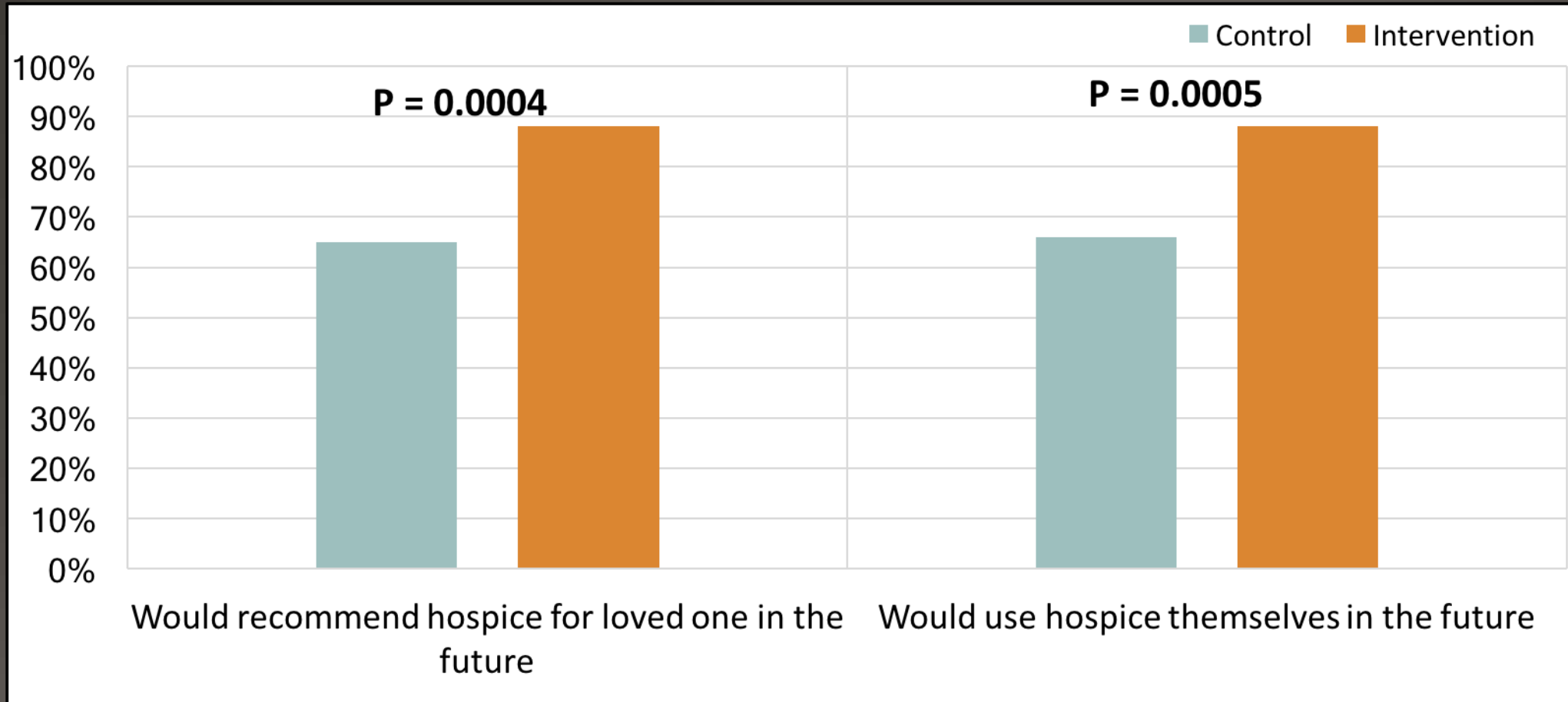
Results: Pain Management



Results: QOL



Results: Hospice and EOL Utilization- Process



Greatest thanks to our Apoyo family
and to all of the patients who have taught us so much.

