

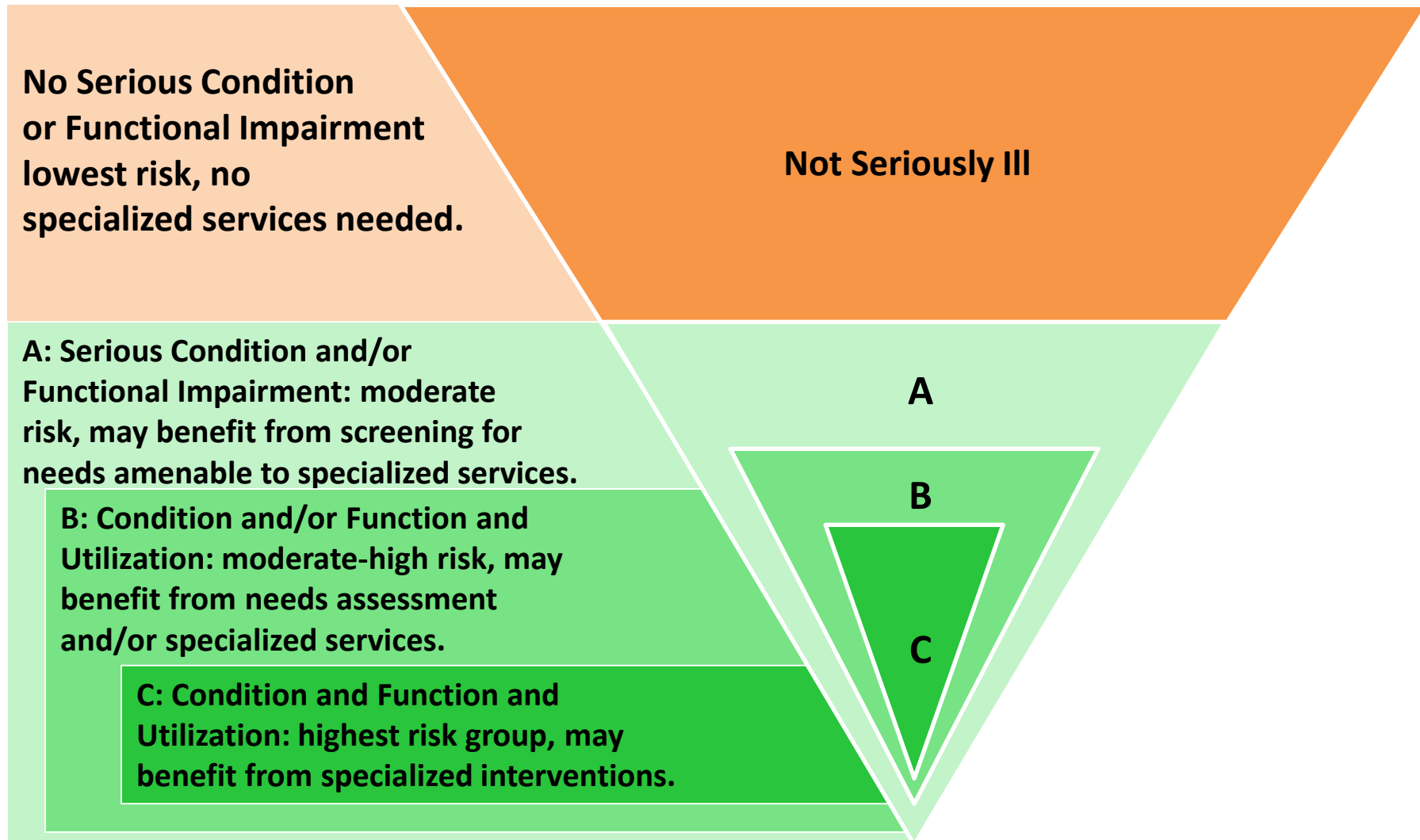
Conceptual definition:

“Serious illness” is a health condition that carries a high risk of mortality AND either negatively impacts a person’s daily function or quality of life, OR excessively strains their caregivers.

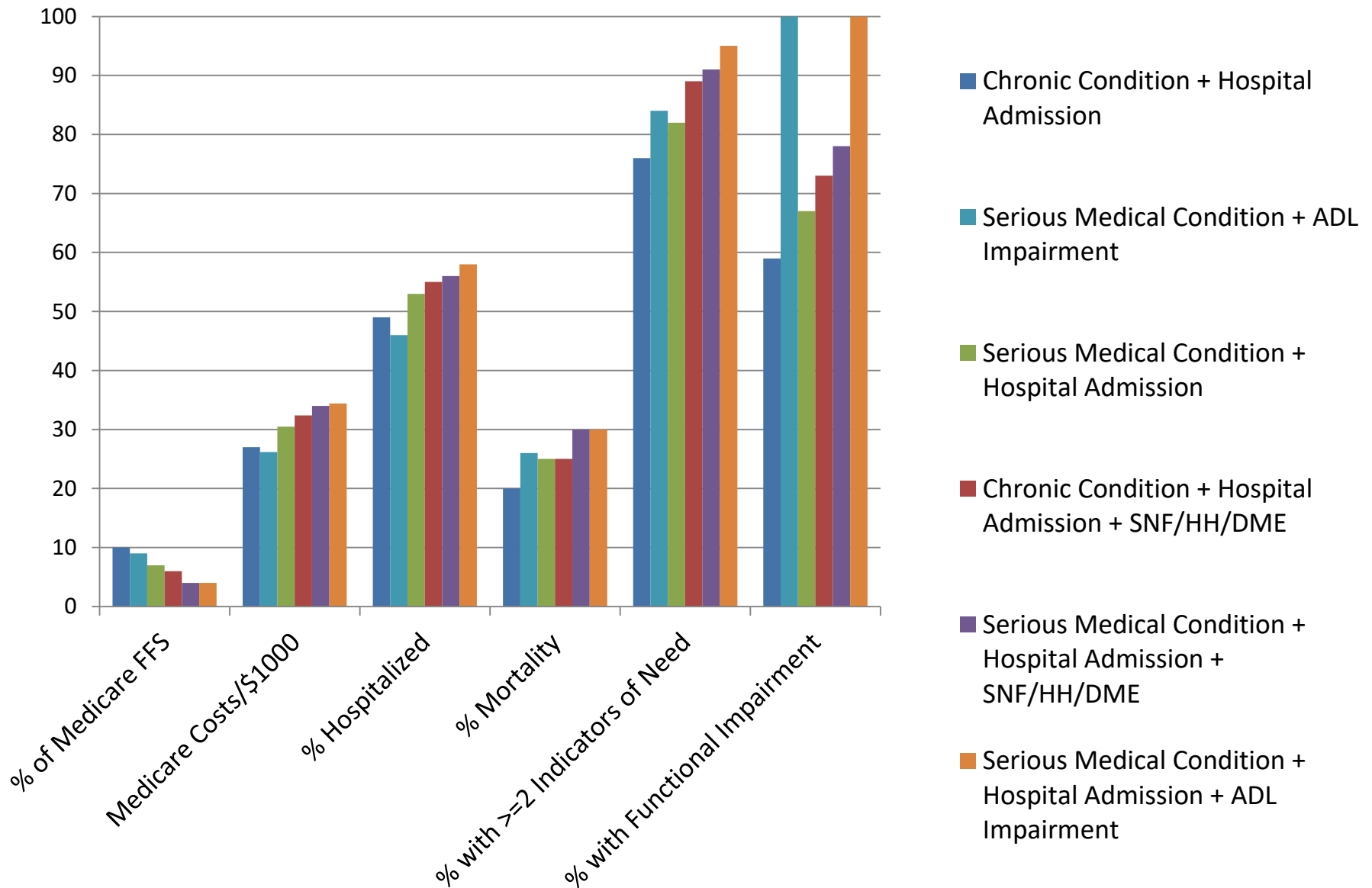
Operationalizing Definition Brings Challenges

- Aim to identify people with high **needs** vs **costs**
 - Business case for specialty Palliative Care services based on value
 - Palliative Care services likely make the most impact on those with high needs
- Trade-off of sensitivity vs specificity
 - Implications for **feasibility and cost-neutrality** if used for program eligibility
 - **Who will be missed** if used for quality measures for accountability
 - Potential **unintended consequences** of inappropriate application of measures
- Available data:
 - Data **now** is inadequate: missing measures of function, cognition & care needs
 - Data available in **future** and how we can influence this
- Likely need for multiple denominators for **various purposes** and **unique populations**

Population Model of Serious Illness



Comparison of Simulation Trials



Key Points Regarding the Denominator

- Existing data offer poor measure of care need and severity of illness
- Approaches based solely upon diagnoses, cost and utilization miss many with significant need
- Function must be measured to improve identification
- Specificity and sensitivity must be considered in context of purpose, with eye toward unintended consequences

The Serious Illness Quality Alignment Hub

- The Hub is a three-year effort by the Center to Advance Palliative Care, coordinated with the National Quality Forum and funded by the Gordon and Betty Moore Foundation
- Our mission is improve access to high quality care for those with serious illness through integration of serious illness measures, standards, and best practices into existing health care accountability systems
- We seek to leverage the power of financing and regulation to drive adherence to best practice
- Co-Directors: Allison Silvers and Amy Kelley



NATIONAL
QUALITY FORUM



The Hub aims to integrate serious illness quality measures, standards, and best practices into accountability systems

4 Guiding Principles

1. Achievement of goal must be feasible within 3 years
2. Large scale impact on patients/families is priority
3. Targets for action are practice level or higher (not clinician level)
4. Relevance to community settings, but not limited to those settings

3 Key Functions:

1. Coordinating existing projects in this space
2. Identifying new opportunities to pursue
3. Vetting next steps with assembled experts and partners

We will not be developing measures in this effort

For More Information

Please contact:

Sara Hufstader Collins

Senior Manager, Hub

Hub@CAPC.org