

# Advancing Progress in Cancer Prevention and Risk Reduction

## A National Cancer Policy Forum Workshop

### Advancing Progress in Cancer Prevention and Risk Reduction

A Workshop

June 27, 2022,  
8:30am – 5:30pm ET

June 28, 2022,  
8:30am – 11:45am ET



**Link to view webcast:**

<https://www.nationalacademies.org/event/06-27-2022/advancing-progress-in-cancer-prevention-and-risk-reduction-a-workshop>

**#NatlCancerForum**

NATIONAL  
ACADEMIES *Sciences  
Engineering  
Medicine*





June 27, 2022

Dear Colleagues,

Welcome to the National Cancer Policy Forum workshop on *Advancing Progress in Cancer Prevention and Risk Reduction*. The workshop will review the current evidence base for risk factors for cancer, examine best practices and innovative approaches for clinic- and population-based cancer prevention, and discuss strategies to promote effective communication about cancer prevention. Workshop speakers will highlight their perspectives on the opportunities to spur progress in cancer prevention efforts, leveraging policy, research, public health, and clinical practice.

We welcome your involvement in the workshop. Please use the microphones in the room or the chat box on our website (<https://www.nationalacademies.org/event/06-27-2022/advancing-progress-in-cancer-prevention-and-risk-reduction-a-workshop>) to ask questions, and please include your name and affiliation when posting questions/comments. The proceedings of the workshop will be published by the National Academies Press and may incorporate your comments and ideas. Archived presentations and videos from the workshop will also be available on the event website.

Sincerely,

Garnet L. Anderson, PhD  
Senior Vice President and Director  
Public Health Sciences Division  
Fred Hutchinson Cancer Center  
Affiliate Professor, Department of Biostatistics  
University of Washington  
Principal Investigator  
WHI Clinical Coordinating Center

Karen Basen-Engquist, PhD, MPH  
Annie Laurie Howard Research  
Distinguished Professor  
Director, Center for Energy Balance in Cancer  
Prevention & Survivorship  
Professor of Behavioral Science  
The University of Texas MD Anderson  
Cancer Center

# Advancing Progress in Cancer Prevention and Risk Reduction

A National Cancer Policy Forum Workshop



Keck Center Room 100  
500 Fifth St., N.W.  
Washington, D.C. 20001

## AGENDA

<b>MONDAY, JUNE 27, 2022</b> <b>8:30 am – 5:30 pm</b> <b>Eastern Time Zone</b>	
<b>8:00 am</b>	<b>Registration and Breakfast</b>
<b>8:30 am</b>	<b>Welcome from the National Cancer Policy Forum</b> <i>Planning Committee Co-chairs:</i> <i>Garnet L. Anderson, Fred Hutchinson Cancer Center</i> <i>Karen Basen-Engquist, The University of Texas MD Anderson Cancer Center</i>
<b>8:45 am</b>	<b>SESSION I: Overview of the Evidence Base on Risk Factors for Cancer</b> <i>Moderator: Garnet L. Anderson, Fred Hutchinson Cancer Center</i>  <b>Overview of the Modifiable Risk Factors for Cancer</b> <ul style="list-style-type: none"> <li>• Alpa V. Patel, American Cancer Society (Virtual)</li> </ul> <b>Overview of the Non-Modifiable Risk Factors for Cancer</b> <ul style="list-style-type: none"> <li>• Mary Beth Terry, Columbia University</li> </ul> <b>Addressing the Social Determinants of Health and Disparities in Cancer Risk Across Populations</b> <ul style="list-style-type: none"> <li>• Chanita Hughes-Halbert, Norris Comprehensive Cancer Center, University of Southern California (Virtual)</li> </ul> <b>Communicating Effectively about the Evidence Base for Cancer Prevention and Risk Reduction</b> <ul style="list-style-type: none"> <li>• Maria D. Thomson, Virginia Commonwealth University Massey Cancer Center</li> </ul>

**Workshop Website and Briefing Materials:**

<https://www.nationalacademies.org/event/06-27-2022/advancing-progress-in-cancer-prevention-and-risk-reduction-a-workshop>

	<p><b>Innovations in Cancer Etiology Research to Inform Cancer Prevention</b></p> <ul style="list-style-type: none"> <li>• Timothy R. Rebbeck, Harvard University and Dana Farber Cancer Institute</li> </ul> <p><b>Panel Discussion with Speakers</b></p>
<b>10:10 am</b>	<b>Break</b>
<b>10:20 am</b>	<p><b>SESSION 2A: Implementing Population-Based Cancer Prevention Strategies</b> <i>Moderator: Karen Basen-Engquist, The University of Texas MD Anderson Cancer Center</i></p> <p><b>Leveraging Digital Tools and Citizen Science Methods to Advance Health Equity for Cancer Prevention</b></p> <ul style="list-style-type: none"> <li>• Abby C. King, Stanford University (Virtual)</li> </ul> <p><b>Policies to Increase the Use of Evidence-based Cancer Prevention</b></p> <ul style="list-style-type: none"> <li>• Karen M. Emmons, Harvard University</li> </ul> <p><b>The National Witness Project: Building Community Capacity</b></p> <ul style="list-style-type: none"> <li>• Rachel C. Shelton, Columbia University</li> <li>• Detric (Dee) Johnson, The National Witness Project</li> </ul> <p><b>Community Outreach and Engagement Requirement in the Cancer Center Support Grants</b></p> <ul style="list-style-type: none"> <li>• Robin C. Vanderpool, NCI Health Communication and Informatics Research</li> </ul> <p><b>Panel Discussion with Speakers</b></p>
<b>11:45 am</b>	<b>Lunch Break</b>
<b>12:45 pm</b>	<p><b>SESSION 2B: Innovative Strategies for Population-Based Cancer Prevention</b> <i>Moderator: Karen M. Emmons, Harvard University</i></p> <p><b>Academic-Community Partnership for Cancer Prevention</b></p> <ul style="list-style-type: none"> <li>• Ruth Rechis, The University of Texas MD Anderson Be Well Communities</li> </ul>

**Workshop Website and Briefing Materials:**

<https://www.nationalacademies.org/event/06-27-2022/advancing-progress-in-cancer-prevention-and-risk-reduction-a-workshop>

	<p><b>Workplace Health Promotion</b></p> <ul style="list-style-type: none"> <li>• Peggy A. Hannon, University of Washington</li> </ul> <p><b>HPV Self-Collection for Cervical Cancer Prevention</b></p> <ul style="list-style-type: none"> <li>• Jane R. Montealegre, Baylor College of Medicine</li> </ul> <p><b>Use of 211 Community Needs Helplines to Address Cancer Prevention</b></p> <ul style="list-style-type: none"> <li>• Maria E. Fernández, University of Texas Health Science Center at Houston</li> </ul> <p><b>Panel Discussion with Speakers</b></p>
<p><b>2:10 pm</b></p>	<p><b>Break</b></p>
<p><b>2:20 pm</b></p>	<p><b>SESSION 3A: Implementing Clinic-Based Cancer Prevention Strategies</b> <i>Moderator: Julie R. Gralow, American Society of Clinical Oncology</i></p> <p><b>Gaps in the Evidence Base for Clinical Cancer Prevention and Strategies for Improving the Evidence Base</b></p> <ul style="list-style-type: none"> <li>• Carol M. Mangione, U.S. Preventive Services Task Force and University of California, Los Angeles (Virtual)</li> </ul> <p><b>HPV Vaccination Implementation and Status</b></p> <ul style="list-style-type: none"> <li>• Douglas Lowy, National Cancer Institute</li> </ul> <p><b>Smoking Cessation</b></p> <ul style="list-style-type: none"> <li>• Kristie Long Foley, Wake Forest School of Medicine</li> </ul> <p><b>Physical Activity and Nutrition</b></p> <ul style="list-style-type: none"> <li>• Anne McTiernan, Fred Hutchinson Cancer Center (Virtual)</li> </ul> <p><b>Intersections of Community Health, Primary Care and Specialty Care</b></p> <ul style="list-style-type: none"> <li>• Shawna Hudson, Rutgers Robert Wood Johnson Medical School</li> </ul> <p><b>Panel Discussion with Speakers</b></p>
<p><b>3:45 pm</b></p>	<p><b>Break</b></p>

**Workshop Website and Briefing Materials:**

<https://www.nationalacademies.org/event/06-27-2022/advancing-progress-in-cancer-prevention-and-risk-reduction-a-workshop>

<p><b>4:00 pm</b></p>	<p><b>SESSION 3B: Innovative Strategies for Clinic-Based Cancer Prevention</b>  <i>Moderator: Beth Y. Karlan, University of California, Los Angeles</i></p> <p><b>Health System Perspective</b></p> <ul style="list-style-type: none"> <li>• Lawrence Kushi, Division of Research, Kaiser Permanente Northern California</li> </ul> <p><b>Interventions for Underserved Populations</b></p> <ul style="list-style-type: none"> <li>• Electra D. Paskett, James Cancer Center/The Ohio State University</li> </ul> <p><b>State Health Policy to Advance Cancer Prevention</b></p> <ul style="list-style-type: none"> <li>• Christopher R. Cogle, Florida Medicaid and University of Florida</li> </ul> <p><b>New Approaches and Challenges to Genetic Testing for Cancer Risk</b></p> <ul style="list-style-type: none"> <li>• Kenneth Offit, Memorial Sloan Kettering Cancer Center (Virtual)</li> </ul> <p><b>Patient Advocacy for Cancer Prevention in High-Risk Populations</b></p> <ul style="list-style-type: none"> <li>• Sue Friedman, Facing Our Risk of Cancer Empowered (Virtual)</li> </ul> <p><b>Panel Discussion with Speakers</b></p>
<p><b>5:25 pm</b></p>	<p><b>Closing Remarks</b></p>
<p><b>5:30 pm</b></p>	<p><b>Adjourn and Evening Reception</b></p>
<p><b>TUESDAY, JUNE 28, 2022</b>  <b>8:30 – 11:45 am</b>  <b>Eastern Time Zone</b></p>	
<p><b>8:00 am</b></p>	<p><b>Registration and Breakfast</b></p>
<p><b>8:30 am</b></p>	<p><b>Welcome and Overview of Day 2</b>  <i>Planning Committee Co-chairs</i>  <i>Garnet L. Anderson, Fred Hutchinson Cancer Center</i>  <i>Karen Basen-Engquist, The University of Texas MD Anderson Cancer Center</i></p>
<p><b>8:35 am</b></p>	<p><b>Session 4: Communicating about Cancer Risk and Prevention</b>  <i>Moderator: Gwen Darien, National Patient Advocate Foundation</i></p> <p><b>Promoting Effective Cancer Prevention Communication Among Patients and Clinicians</b></p> <ul style="list-style-type: none"> <li>• Kasisomayajula Viswanath, Harvard University</li> </ul>

**Workshop Website and Briefing Materials:**

<https://www.nationalacademies.org/event/06-27-2022/advancing-progress-in-cancer-prevention-and-risk-reduction-a-workshop>

	<p><b>Fostering Trustworthiness and Developing Effective Communication in a Complex Environment</b></p> <p><i>Roundtable Discussion</i></p> <ul style="list-style-type: none"> <li>• Carolyn R. “Bo” Aldigé, Prevent Cancer Foundation</li> <li>• Noel T. Brewer, University of North Carolina</li> <li>• Nigel Brockton, American Institute for Cancer Research</li> <li>• Wen-Ying Sylvia Chou, National Cancer Institute</li> <li>• Sue Friedman, Facing Our Risk of Cancer Empowered (Virtual)</li> <li>• Dhruv Khullar, Weill Cornell Medical College and <i>The New Yorker</i> (Virtual)</li> </ul>
<b>9:55 am</b>	<b>Break</b>
<b>10:05 am</b>	<p><b>Session 5: Opportunities to Spur Progress in Cancer Prevention and Risk Reduction</b></p> <p><i>Moderator: Katrina Goddard, National Cancer Institute</i></p> <p><b>Centers for Disease Control and Prevention</b></p> <ul style="list-style-type: none"> <li>• Karen Hacker, National Center for Chronic Disease Prevention and Health Promotion (Virtual)</li> </ul> <p><b>National Cancer Institute</b></p> <ul style="list-style-type: none"> <li>• Philip E. Castle, Division of Cancer Prevention</li> </ul> <p><b>Health Resources and Services Administration</b></p> <ul style="list-style-type: none"> <li>• Sue Lin, Office of Quality Improvement, Bureau of Primary Health Care</li> </ul> <p><b>Health System Approaches in Cancer Prevention</b></p> <ul style="list-style-type: none"> <li>• Carrie H. Colla, Congressional Budget Office and Dartmouth College</li> </ul> <p><b>Panel Discussion with Speakers</b></p>
<b>11:30 am</b>	<p><b>Closing Remarks</b></p> <p><i>Planning Committee Co-chairs</i></p> <p><i>Garnet L. Anderson, Fred Hutchinson Cancer Center</i></p> <p><i>Karen Basen-Engquist, The University of Texas MD Anderson Cancer Center</i></p>
<b>11:45 am</b>	<b>Adjourn</b>

**Workshop Website and Briefing Materials:**

<https://www.nationalacademies.org/event/06-27-2022/advancing-progress-in-cancer-prevention-and-risk-reduction-a-workshop>





## **Sponsors of the National Cancer Policy Forum**

Centers for Disease Control and Prevention

National Institutes of Health/National Cancer Institute

American Association for Cancer Research

American Cancer Society

American College of Radiology

American Society of Clinical Oncology

Association of American Cancer Institutes

Association of Community Cancer Centers

Bristol-Myers Squibb

Cancer Support Community

Flatiron Health

Merck

National Comprehensive Cancer Network

National Patient Advocate Foundation Novartis

Oncology

Oncology Nursing Society

Partners in Health

Pfizer Inc.

Sanofi

Society for Immunotherapy of Cancer

We are grateful for the support of our sponsors, which is crucial to the work of the Forum.





## PLANNING COMMITTEE ROSTER

### **Garnet L. Anderson, PhD (Co-Chair)**

Senior Vice President and Director  
Public Health Sciences Division  
Fred Hutchinson Cancer Center  
Affiliate Professor, Department of Biostatistics  
University of Washington  
Principal Investigator  
Women's Health Initiative Clinical Coordinating  
Center

### **Karen Basen-Engquist, PhD, MPH (Co-Chair)**

Annie Laurie Howard Research  
Distinguished Professor  
Director, Center for Energy Balance in Cancer  
Prevention & Survivorship  
Professor of Behavioral Science  
The University of Texas MD Anderson  
Cancer Center

### **Gwen Darien, BA**

Executive Vice President  
Patient Advocacy and Engagement  
National Patient Advocate Foundation

### **Nancy E. Davidson, MD**

Executive Vice President for Clinical Affairs  
Senior Vice President and Professor  
Clinical Research Division  
Fred Hutchinson Cancer Center  
Professor and Head, Division of Medical Oncology,  
Department of Medicine, University of Washington  
Raisbeck Endowed Chair for Collaborative Cancer  
Research

### **Nicole F. Dowling, PhD**

Associate Director for Science  
Division of Cancer Prevention and Control  
National Center for Chronic Disease Prevention and  
Health Promotion  
Centers for Disease Control and Prevention

### **Karen M. Emmons, PhD**

Professor  
Department of Social and Behavioral Sciences  
T.H. Chan School of Public Health  
Harvard University

### **Stanton L. Gerson, MD**

Dean, School of Medicine and Senior Vice President  
for Medical Affairs  
Director (Acting), Case Comprehensive Cancer Center  
Director, National Center for Regenerative Medicine  
Distinguished University Professor  
Asa & Patricia Shiverick - Jane B. Shiverick (Tripp)  
Professor Hematological Oncology  
Professor of Medicine, Oncology  
Case Western Reserve University

### **Katrina Goddard, PhD**

Director  
Division of Cancer Control and Population Sciences  
National Cancer Institute

### **Julie R. Gralow, MD, FACP, FASCO**

Chief Medical Officer  
Executive Vice President  
American Society of Clinical Oncology

### **Chanita Hughes Halbert, PhD**

Vice Chair for Research  
Professor, Department of Preventive Medicine  
Associate Director for Cancer Equity  
Norris Comprehensive Cancer Center  
University of Southern California

### **Beth Y. Karlan, MD**

Vice Chair, Women's Health Research  
Professor, Department of Obstetrics and  
Gynecology  
Director, Cancer Population Genetics  
Jonsson Comprehensive Cancer Center  
David Geffen School of Medicine  
University of California, Los Angeles

### **Scott M. Lippman, MD**

Director, Moores Cancer Center  
Distinguished Professor of Medicine  
Senior Associate Dean and Associate Vice  
Chancellor for Cancer Research and Care  
Chugai Pharmaceutical Chair in Cancer  
University of California, San Diego

### **Laura Makaroff, DO**

Senior Vice President  
Prevention and Early Detection  
American Cancer Society, Inc



## SPEAKER AND MODERATOR ROSTER

**Carolyn R. “Bo” Aldigé**

Founder  
Prevent Cancer Foundation

**Garnet L. Anderson, PhD**

Senior Vice President and Director  
Public Health Sciences Division  
Fred Hutchinson Cancer Center  
Affiliate Professor, Department of Biostatistics  
University of Washington  
Principal Investigator  
Women’s Health Initiative Clinical Coordinating Center

**Karen Basen-Engquist, PhD, MPH**

Annie Laurie Howard Research  
Distinguished Professor  
Director, Center for Energy Balance in Cancer  
Prevention & Survivorship  
Professor of Behavioral Science  
The University of Texas MD Anderson  
Cancer Center

**Noel T. Brewer, PhD**

Gillings Distinguished Professor of Public Health  
Department of Health Behavior  
Gillings School of Global Public Health  
Lineberger Comprehensive Cancer Center  
University of North Carolina at Chapel Hill

**Nigel Brockton, PhD**

Vice President, Research  
American Institute for Cancer Research  
Adjunct Associate Professor  
Department Of Community Health Sciences  
University of Calgary

**Philip E. Castle, PhD, MPH**

Director, Division of Cancer Prevention  
Senior Investigator  
Division of Cancer Epidemiology and Genetics  
National Cancer Institute  
National Institutes of Health

**Wen-Ying Sylvia Chou, PhD, MPH**

Program Director  
Health Communication and Informatics Research  
Branch  
National Cancer Institute

**Christopher R. Cogle, MD**

Chief Medical Officer  
Florida Medicaid  
Scholar in Clinical Research  
Leukemia & Lymphoma Society  
Professor, University of Florida  
Director  
Florida Health Policy Leadership Academy  
Bob Graham Center for Public Service

**Carrie H. Colla, PhD**

Director of Health Analysis  
Congressional Budget Office  
Professor  
Geisel School of Medicine  
Dartmouth College

**Gwen Darien, BA**

Executive Vice President  
Patient Advocacy and Engagement  
National Patient Advocate Foundation

**Karen M. Emmons, PhD**

Professor  
Department of Social and Behavioral Sciences  
T.H. Chan School of Public Health  
Harvard University

**Maria E. Fernández, PhD**

Lorne Bain Distinguished Professor in Public Health and  
Medicine  
Professor, Health Promotion and Behavioral Sciences  
Director, Center for Health Promotion and Prevention  
Research  
Co-Director, UT Health Institute for Implementation  
Science  
School of Public Health  
University of Texas Health Science Center at Houston

**Kristie Long Foley, PhD, MS**

Professor and Chair  
Department of Implementation Science  
Senior Associate Dean for Research  
Wake Forest University School of Medicine

**Sue Friedman, DVM**

Executive Director  
Facing Our Risk of Cancer Empowered (FORCE)



**Katrina Goddard, PhD**

Director  
Division of Cancer Control and Population Sciences  
National Cancer Institute

**Julie R. Gralow, MD, FACP, FASCO**

Chief Medical Officer  
Executive Vice President  
American Society of Clinical Oncology

**Karen Hacker, MD, MPH**

Director  
National Center for Chronic Disease Prevention and  
Health Promotion  
Centers for Disease Control and Prevention

**Peggy A. Hannon, PhD, MPH**

Director, Health Promotion Research Center  
Professor, Department of Health Systems and  
Population Health  
School of Public Health  
University of Washington

**Shawna Hudson, PhD**

Professor and Research Division Chief  
Henry Rutgers Chair of Family Medicine and  
Community Health  
Director, Center Advancing Research and Evaluation  
for Patient-Centered Care  
Rutgers Robert Wood Johnson Medical School  
Co-Director, Community Engagement  
New Jersey Alliance for Clinical and Translational  
Science  
Institute for Health, Health Care Policy and Aging  
Research  
Rutgers, The State University of New Jersey

**Chanita Hughes-Halbert, PhD**

Vice Chair for Research  
Professor, Department of Preventive Medicine  
Associate Director for Cancer Equity  
Norris Comprehensive Cancer Center  
University of Southern California

**Detric (Dee) Johnson, BA**

President and Founder  
Witness CARES, LLC  
The National Witness Project, Inc.

**Beth Y. Karlan, MD**

Vice Chair, Women's Health Research  
Professor, Department of Obstetrics and  
Gynecology  
Director, Cancer Population Genetics  
Jonsson Comprehensive Cancer Center  
David Geffen School of Medicine  
University of California, Los Angeles

**Dhruv Khullar, MD, MPP**

Physician and Assistant Professor of Health Policy and  
Economics  
Weill Cornell Medical College  
Writer, The New Yorker

**Abby C. King, PhD**

Professor of Medicine  
Department of Epidemiology & Population Health  
School of Medicine  
Stanford University

**Lawrence H. Kushi, ScD**

Director of Scientific Policy  
Division of Research  
Kaiser Permanente Northern California

**Sue Lin, PhD, MS**

Deputy Office Director  
Office of Quality Improvement  
Bureau of Primary Health Care  
Health Resources and Services Administration

**Douglas Lowy, MD**

Acting Director  
Principal Deputy Director  
National Cancer Institute

**Carol M. Mangione, MD, MSPH**

Chief, Division of General Medicine and  
Health Services Research  
Executive Vice Chair for Health Equity and Health  
Services Research  
Barbara A. Levey & Gerald S. Levey Distinguished  
Professor of Medicine and Public Health  
David Geffen School of Medicine  
Fielding School of Public Health  
University of California, Los Angeles  
Chair, U.S. Preventive Services Task Force



**Ann McTiernan, MD, PhD**

Professor  
Division of Public Health Sciences  
Fred Hutchinson Cancer Center  
Research Professor  
Schools of Public Health and Medicine  
University of Washington

**Jane R. Montealegre, PhD, MSPH**

Assistant Professor, Department of Pediatrics  
Assistant Director, Community Outreach and  
Engagement  
Dan L Duncan Comprehensive Cancer Center  
Baylor College of Medicine

**Kenneth Offit, MD, MPH**

Chief, Clinical Genetics Service  
Vice Chair, Academic Affairs  
Department of Medicine  
Robert and Kate Niehaus Chair in Inherited Cancer  
Genomics  
Member, Cancer Biology and Genetics Program (Joint)  
Sloan Kettering Institute  
Memorial Sloan Kettering Cancer Center  
Professor of Medicine and Population Health Sciences,  
Division of Epidemiology  
Weill Cornell Medical College  
Cornell University

**Electra D. Paskett, PhD, MSPH**

Marion Rowley Professor of Cancer Research Director  
Division of Cancer Prevention and Control  
College of Medicine  
Professor, Division of Epidemiology  
College of Public Health  
Associate Director for Population Sciences and  
Community Outreach  
James Comprehensive Cancer Center  
The Ohio State University  
Founding Director, Center for Cancer Health Equity

**Alpa V. Patel, PhD**

Senior Vice President  
Population Science  
2019 CEO's Club Member  
American Cancer Society

**Timothy R. Rebbeck, PhD**

Vincent L. Gregory, Jr. Professor of Cancer Prevention  
Director, Zhu Family Center for Global Cancer  
Prevention  
Harvard T.H. Chan School of Public Health  
Harvard University

Associate Director for Equity and Engagement  
Dana-Farber Harvard Cancer Center

**Ruth Rechis, PhD**

Director  
Be Well Communities™  
The University of Texas MD Anderson Cancer Center

**Rachel C. Shelton, ScD, MPH**

Associate Professor  
Department of Sociomedical Sciences  
Mailman School of Public Health  
Columbia University  
Co-Director, Community Engagement Core Resource  
Director, Implementation Science Initiative  
Columbia's Irving Institute for Clinical and Translational  
Research

**Mary Beth Terry, PhD**

Professor  
Department of Epidemiology  
Mailman School of Public Health  
Chronic Disease Unit Leader,  
Department of Epidemiology  
Associate Director  
Population Science and Community Outreach Herbert  
Irving Comprehensive Cancer Center  
Columbia University

**Maria D. Thomson, PhD**

Associate Professor  
Health Behavior and Policy  
School of Medicine  
Director, Community Engagement in Research  
Massey Cancer Center  
Virginia Commonwealth University

**Robin C. Vanderpool, DrPH**

Branch Chief, Health Communication and Informatics  
Research  
Behavioral Research Program  
Division of Cancer Control and Population Sciences  
National Cancer Institute

**Kasisomayajula “Vish” Viswanath, PhD**

Lee Kum Kee Professor of Health Communication  
Harvard T. H. Chan School of Public Health  
Dana-Farber Cancer Institute  
Director, Health Communication  
Director, Enhancing Communications for Health  
Outcomes (ECHO) Laboratory  
Dana-Farber/Harvard Cancer Center

## SPEAKERS, PANELISTS, AND PLANNING COMMITTEE BIOSKETCHES



**Carolyn R. (“Bo”) Aldigé**  
Prevent Cancer Foundation

Carolyn R. (“Bo”) Aldigé is Founder and CEO of the Prevent Cancer Foundation, a national non-profit organization she started in 1985 in memory of her father. Today, the Foundation is nationally recognized as a leader in the fight against cancer through prevention and early detection. Ms. Aldigé serves on the External Advisory Board of the MD Anderson Cancer Center, the boards of directors of Friends of Cancer Research and the Intercultural Cancer Council, the Board of Overseers of the Vanderbilt Ingram Cancer Center, the External Advisory Boards of Project ECHO and the Center for Thoracic Oncology of the Mount Sinai Health System, and the advisory board of Stand Up to Cancer. She is vice-chairman of the

Global Lung Cancer Coalition. She has been honored for public service by the National Cancer Institute and numerous NGOs, including AACR, ASCO and ASPO, which honored her with the Joseph W. Cullen Memorial Award in 2020.



**Garnet L. Anderson, PhD**  
Fred Hutchinson Cancer Center

Garnet Anderson, PhD, leads the Public Health Sciences Division at Fred Hutchinson Cancer Center, which identifies strategies that aim to reduce the incidence and mortality of cancer and other diseases primarily through studies of etiology, prevention and early detection. Her expertise is in chronic disease prevention, women’s health and clinical trial design. She is a leader in the design and analysis of the Women’s Health Initiative (WHI), a landmark NIH-funded project that enrolled more than 160,000 women across the U.S. to find ways to prevent cardiovascular disease, osteoporosis and cancer.

In 2002, Anderson and her WHI colleagues reported that hormone-replacement therapy using estrogen plus progestin increases a woman’s risk of breast cancer, stroke and heart disease and, in women over 65, doubles the risk of dementia. These findings led to a rapid drop in the use of these hormones and a noteworthy reduction in breast cancer incidence in the US and many other countries. Subsequent analyses estimated these changes prevented 126,000 breast cancer diagnoses and saved approximately \$35.2 billion in direct medical expenses over the decade since their release in the U.S. alone.

As principal investigator of the WHI Clinical Coordinating Center, Anderson oversees the integration of many different studies within this large program. Examples include Life and Longevity After Cancer (LILAC), a program to examine late- and long-term effects of cancer and its treatment among aging cancer survivors, and the Cocoa Supplements and Multivitamin Outcomes Study (COSMOS), a randomized trial of cocoa extracts and multivitamins for the prevention of cancer and cardiovascular disease.

Her awards and honors include holding the Fred Hutch 40th Anniversary Endowed Chair. In 2020 she was named a Fellow of the American Statistical Association.





**Karen Basen-Engquist, PhD, MPH**  
The University of Texas MD Anderson Cancer Center

Karen Basen-Engquist, PhD, MPH, is the Annie Laurie Howard Research Distinguished Professor in the department of Behavioral Science and the Director of the Center for Energy Balance in Cancer Prevention and Survivorship at The University of Texas MD Anderson Cancer Center. Dr. Basen-Engquist's research focuses on cancer survivors and high-risk individuals and investigates the role of health behavior interventions in improving physical functioning, optimizing quality of life, and reducing risk of cancer, cancer recurrence, and other chronic diseases. In addition, she studies intervention methods for behavior change with a focus on distance-based and mHealth interventions and uses innovative real-time methods for assessing symptoms and behavior in cancer patients and survivors. She currently is the co-chair of LIVES, a national trial of a diet and physical activity intervention for ovarian cancer survivors and has been a multiple PI and a co-investigator on grants to study the use of wearable and home-based sensors in cancer prevention and survivorship research. Her

research on the benefits of physical activity for cancer survivors has been translated into a community program to increase physical activity among minority and medically underserved cancer survivors in Houston, Beaumont, Tyler, and El Paso, Texas, funded by the Cancer Prevention and Research Institute of Texas (CPRIT). Dr. Basen-Engquist's research center is working to expand energy balance research at MD Anderson by facilitating collaboration among investigators with interests in basic science, clinical, and population research related to physical activity, nutrition, obesity, and cancer.

Dr. Basen-Engquist is a member of the National Cancer Policy Forum at the National Academy of Medicine, and has served as an organizer of NCPF workshops on incorporating physical activity and weight management programs throughout the cancer continuum, patient navigation, and health literacy. She is the past president of the American Society of Preventive Oncology.



**Noel T. Brewer, PhD**  
University of North Carolina at Chapel Hill

Dr. Noel Brewer is Gillings Distinguished Professor of Public Health at the University of North Carolina. He holds appointments in the Department of Health Behavior at the Gillings School of Global Public Health and the Lineberger Comprehensive Cancer Center. He has a PhD in health psychology from Rutgers University. Dr. Brewer's research explores why people engage in vaccination and other health behaviors. He has published over 300 papers on these topics including behaviors related to HPV vaccination, tobacco warnings, and screening tests.

Dr. Brewer is a Fellow of the Association for Psychological Science. He serves on the Lancet Commission on Vaccine Refusal,

Acceptance, and Demand. Dr. Brewer advises the World Health Organization and US Centers for Disease Control and Prevention on vaccination. He advised the President's Cancer Panel under two presidents and the National Vaccine Advisory Committee.



**Nigel Brockton, PhD**  
American Institute for Cancer Research

Nigel Brockton, PhD, is the Vice President of Research at the American Institute for Cancer Research (AICR). Dr. Brockton earned his PhD in the genetic epidemiology of colorectal cancer from the University of Aberdeen in 2003 followed by post-doctoral studies at the University of Dundee. Before joining AICR in 2017, he was a Research Scientist/ Associate Professor with Alberta Health Services/ University of Calgary conducting population-based molecular epidemiology research, studying the role of modifiable lifestyle factors and prognostic markers in cancer-related outcomes, particularly in breast, colorectal and oral cancer patients. As the Vice President of Research for AICR, he oversees all research-related aspects of the organization including the Research Grant Program, the AICR Research Conference and the research that supports AICR's policy objectives and AICR printed and digital materials. He also contributes to the WCRF/AICR Continuous Update Project (CUP), that reviews, analyses and summarizes the global literature regarding diet, physical activity, obesity and cancer.

He maintains an appointment (adjunct Associate Professor) at the University of Calgary, Department of Community Health Sciences, and continues to conduct collaborative research using the rich data and biospecimen resources within the prospective longitudinal studies that he established in Alberta. These studies examine the patterns of adherence to lifestyle recommendations among cancer patients, the impact of modifiable lifestyle factors on cancer metastasis and survival and provide data and biospecimens for external collaborative projects.



**Philip E. Castle, PhD, MPH**  
National Cancer Institute

Philip E. Castle, PhD, MPH is the Director of the Division of Cancer Prevention (DCP) and Senior, Tenured Investigator in the Division of Cancer Epidemiology and Genetics (DCEG) at the U.S. National Cancer Institute (NCI) (Rockville, MD, USA). From 2014-2020, he was a Professor in the Department of Epidemiology and Population Health at Albert Einstein College of Medicine, at which he was granted tenure in 2019. Previously, Dr. Castle was the Chief Scientific Officer of the American Society for Clinical Pathology (ASCP) (2011-2). He was a Senior, Tenured Investigator (2010) and Tenure-Track Investigator (2003-10) in DCEG/NCI. From 1999-2002, Dr. Castle was a Cancer Prevention Fellow in DCP/NCI, during which time he received MPH in Epidemiology in 2000 from the Johns Hopkins University. Dr. Castle received his PhD in Biophysics in 1995 from the Johns Hopkins University.





**Wen-Ying Sylvia Chou, PhD, MPH**  
National Cancer Institute

Wen-Ying Sylvia Chou, PhD, MPH, is a Program Director in the Health Communication and Informatics Research Branch in the Behavioral Research Program at the National Cancer Institute (NCI). A prolific health communication scholar with over 100 peer-reviewed publications, Chou has led several NIH initiatives on the impact of the evolving communication landscape on public health and cancer control. Trained as a sociolinguist, she has expertise in mixed methods analyses of social media interactions, patient-provider interactions, end-of-life discourse, and personal narratives. Chou's current research centers on health misinformation on social media. She recently served as a guest editor on a special issue on health misinformation for the *American Journal of Public Health*. Since 2020, she has been guiding federal COVID-19 communication efforts by applying social science to address vaccine hesitancy, foster vaccine confidence, and inform health communication during the public health crisis. Chou completed a post-doctoral fellowship with NCI's Cancer Prevention

Fellowship Program and earned MS and PhD degrees in linguistics from Georgetown University, and a Master Degree in public health from University California, Berkeley.



**Christopher R. Cogle, MD**  
Florida Medicaid and University of Florida

Christopher R. Cogle, M.D. is a practicing oncologist, Scholar in Clinical Research (Leukemia & Lymphoma Society), and Chief Medical Officer for Florida Medicaid. Dr. Cogle has authored over 130 publications and is inventor on several patents for new diagnostics and cancer treatments. He founded and directs the Florida Health Policy Leadership Academy at the Bob Graham Center for Public Service, which teaches population health to elected officials and community leaders. As the first CMO for Florida Medicaid, Dr. Cogle has improved the health of over 5 million low-income Floridians, including over 60% of births in the state. In 2020, Dr. Cogle was selected by the National Academy of Medicine as an Emerging Leader in Health and Medicine.



**Carrie H. Colla, PhD**

Congressional Budget Office and Dartmouth College

Carrie Colla, PhD, is the Director of Health Analysis at the Congressional Budget Office (CBO). CBO produces independent, non-partisan analyses of budgetary and economic issues to support the Congressional budget process. A health economist, Colla's expertise lies in provider payment, health insurance markets, and insurance benefit design. Colla's investigator-initiated research was dedicated to examining health system performance and the effects of payment and delivery system reforms on the efficiency,

accessibility, and affordability of health care. Dr. Colla served on the Physician-Focused Payment Model Technical Advisory Committee (PTAC), providing comments and recommendations to the Secretary of Health and Human Services on physician payment models. Dr. Colla was chosen to participate in the 2017-2018 Robert Wood Johnson Foundation Health Policy Fellows program, with placements in the House of Representatives and the Center for Medicare and Medicaid Innovation. In 2020, Dr. Colla was selected as an Emerging Leader in Health and Medicine Scholar by the National Academy of Medicine. Colla received her undergraduate degree from Dartmouth College, and her MA in economics and PhD in health policy from the University of California, Berkeley.



**Gwen Darien, BA**

National Patient Advocate Foundation

Gwen Darien, BA, is a longtime patient advocate who has played leadership roles in some of the country's preeminent nonprofit organizations. As executive vice president for patient advocacy and engagement, Ms. Darien leads programs that link PAF's patient service programs to NPAF initiatives, with the goal of improving access to affordable, equitable quality health care. Called "a bit of a renegade" by *People* magazine, Ms. Darien has long insisted on pushing boundaries while maintaining a safe space for patients. As editor and publisher of *MAMM*, a magazine for women with breast or reproductive cancer, Ms. Darien published features on previously taboo subjects, such as dating after a mastectomy, along with the

more expected academic features on news and policy analysis. Her media leadership was recognized by the Avon Foundation, which honored her as one of "the most powerful women in breast cancer." As a three-time cancer survivor herself, Ms. Darien came into cancer advocacy expressly to change the experiences and outcomes for the patients who came after her and to change the public dialogue about cancer and other life-threatening illnesses. With these goals in mind, in 2005 she started the first standalone advocacy entity in a professional cancer research organization at the American Association for Cancer Research, causing outside observers to note the organization's "progressive commitment to patient advocacy." At AACR, she launched *CR* magazine – a magazine for people with cancer and those who care for them. Later, she served as the executive director of the Samuel Waxman Cancer Research Foundation; director of The Pathways Project; and executive vice president of programs and services at the Cancer Support Community. In each role, Ms. Darien championed placing patients at the center of health system change, whether it is for research, public policy or direct services. While serving as the chair or on the board of a wide range of program committees and workshop faculties, including the Community Engagement in Genomics Working Group of the National Human Genome Research Institute; a member of the US Pharmacopeia Board of Trustees; and as the chair of PCORI's Patient Engagement Advisory Panel, Ms. Darien also writes about her experiences. A recent piece, *Transformation: My Experience as a*

Patient and an Advocate in Three Chapters appeared in the National Academy of Medicine Perspectives. Ms. Darien is a graduate of Sarah Lawrence College, where she also served as an advisor for their Health Advocacy program. She grew up in Milwaukee, but now lives in New York City, where she cooks Persian dishes, collects earrings and improves her friends' personal libraries, one book at a time.



**Nancy E. Davidson, MD**  
Fred Hutchinson Cancer Center

Nancy E. Davidson, MD, is a world-renowned breast cancer researcher who serves as the executive vice president and executive director for clinical affairs and director of the Clinical Research Division at Fred Hutch. She holds the Raisbeck Endowed Chair for Collaborative Research. She also heads the Division of Medical Oncology at the University of Washington School of Medicine and served as president and executive director of Seattle Cancer Care Alliance. She was president of American Society of Clinical Oncology (ASCO) from 2007-2008 and of American Association of Cancer Research (AACR) from 2016-2017.

Dr. Davidson completed her MD from Harvard Medical School, internship at the University of Pennsylvania, residency at Johns Hopkins, and medical oncology fellowship at NIH's National Cancer Institute. She served as a faculty member in the Department of Oncology at Johns Hopkins University School of Medicine from 1986-2009 and held the Breast Cancer Research Chair of Oncology from 1995-2009. From 2009-2016 she served as Hillman Professor of Oncology, Associate Vice Chancellor for Cancer Research and Director of the Cancer Institute at the University of Pittsburgh. She is a member of the National Academy of Medicine and the American Academy of Arts and Sciences.



**Nicole F. Dowling, PhD**  
Centers for Disease Control and Prevention

Nicole F. Dowling, PhD, is the Associate Director for Science in the Division of Cancer Prevention and Control, at the Centers for Disease Control and Prevention (CDC). She is responsible for providing leadership, planning, and guidance to division management and staff on scientific policy, research methodology, and priorities for CDC's national cancer programs.

Dr. Dowling is an epidemiologist and committed leader in public health science with experience as a Branch Chief, Division Associate Director for Science, Team Lead, and researcher, and with over 20 years working in programs across the agency. Before joining the Division of Cancer Prevention and Control in 2018, She served as the Chief of the Developmental Disabilities Branch, in the National Center on Birth Defects and Developmental Disabilities, where she provided scientific leadership and oversight for CDC's surveillance and research programs for autism and other developmental disabilities, including the Autism and Developmental Disabilities Monitoring Network and the Study to Explore Early Development. Previously, as the Associate Director for Science for the Division of Congenital and Developmental Disorders from 2012-2015, Dr. Dowling worked collaboratively with experts within and outside the division to determine the optimal blood folate level for prevention of neural tube defects. These efforts



supported the development of a World Health Organization Guideline for evidence-informed recommendations on blood folate concentrations in women of reproductive age for the prevention of neural tube defects in populations, and the publication detailing the work was awarded a 2015 Charles C. Shepard Science Award.

Additional contributions during her career at CDC have included direction of the population research program with the Office of Public Health Genomics, and research to understand the etiology and outcomes of clotting and bleeding disorders with the Division of Blood Disorders. Dr. Dowling completed her undergraduate education at Harvard University and received her PhD in Epidemiology from Emory University.



**Karen M. Emmons, PhD**  
Harvard University

Karen M. Emmons, PhD, is a Professor of Social and Behavioral Science at the Harvard T.H. Chan School of Public Health. She is behavioral scientist whose work focuses on community-based approaches to design, evaluation, and implementation of cancer prevention interventions in settings that serve historically disadvantaged communities, including low income housing and community health centers. She is the Multi-PI of the P50 Implementation Science Center for Cancer Control Equity, the MPI of the study, “Rapid Acceleration of COVID Diagnostics in Vulnerable Populations in Massachusetts”, and the MPI of Harvard’s T32 Cancer Prevention Education Training Program. She currently serves as the Faculty Director of the Community Engagement Program for Harvard’s Clinical Translational Science Award. Dr. Emmons is Past-President of the Society of Behavioral Medicine, and a member of the National Academy of Medicine.



**Maria E. Fernández, PhD**  
University of Texas Health Science Center at Houston

Maria E. Fernández, PhD, is the Lorne Bain Distinguished Professor in Public Health and Medicine, Professor of Health Promotion and Behavioral Sciences at the University of Texas, School of Public Health (SPH) in Houston, and Director of the Center for Health Promotion and Prevention Research (CHPPR). Dr. Fernandez is also the Founding Co-Director of the new UTHealth Institute for Implementation Science.

Dr. Fernández’s research embodies the concepts of translational, transdisciplinary, inclusive team science to enhance public health research excellence and population health equity. Her accomplishments include leading cutting-edge research on HPV vaccination and cervical, breast, and colorectal cancer screening in Latinx communities; and, more recently, hypertension control, diabetes prevention, and COVID-19 vaccination and testing. Her studies have helped elucidate behavioral and environmental factors influencing health. She is currently PI on more than \$40 million in active research funding and leads several multi-regional initiatives related to chronic disease prevention and control and COVID-19 testing and vaccination.



**Kristie Long Foley, PhD, MS**

Wake Forest University School of Medicine

Kristie Long Foley, PhD, MS, is Chair of the Department of Implementation Science and Senior Associate Dean for Research at Wake Forest University School of Medicine. She earned her PhD from the Gillings School of Global Public Health at the University of North Carolina and completed an NCI-funded post-doctoral fellowship in cancer prevention and control. She studies how to implement and sustain best and promising practices in primary and oncology care to reduce cancer disparities. Dr. Foley was a Fulbright Scholar at Semmelweis University in Budapest and led two RO1s in Eastern Europe that focused on tobacco control capacity building. Data from these grants provided the evidence for national clean air legislation, tobacco taxation, and integration of cessation training in medical and dental schools in Hungary and Romania. Her research has been highlighted in the Tobacco Atlas

and the Fogarty International Center's Global Health Matters as a model for translating science into practice and policy to address the global burden of tobacco-induced diseases. She currently serves as principal investigator of four NIH grants, including a national, cluster randomized trial to implement evidence-based smoking cessation services within community-based lung cancer screening clinics in the NCORP network, and "iDAPT: Implementation and Informatics - Developing Adaptable Processes and Technologies for Cancer Control," one of seven NCI Implementation Science Centers in Cancer Control. Dr. Foley was awarded the 2019 Wake Forest School of Medicine Mentoring Award at Wake Forest University School of Medicine and is a 2020-2021 Executive Leadership in Academic Medicine (ELAM) Fellow. ELAM is a highly selective and intensive one-year fellowship of leadership training to expand the national pool of qualified women candidates for leadership in academic medicine, dentistry, public health and pharmacy.



**Sue Friedman, DVM**

Facing Our Risk of Cancer Empowered (FORCE)

Sue Friedman was a small-animal veterinarian when she was diagnosed with breast cancer at age 33, and learned she had an inherited BRCA2 mutation. After treatment, she recognized gaps in resources for people with inherited mutations. Sue founded FORCE in 1999 to fill this void in hereditary cancer information, support and research. As Executive Director, Sue has 23 years' experience directing FORCE's education and research programs.



**Stanton L. Gerson, MD**

Case Western Reserve University School of Medicine

A renowned physician and cancer researcher, Stanton Gerson, MD, is dean for Case Western Reserve University (CWRU) School of Medicine and vice president for medical affairs. In addition to the School of Medicine faculty and staff, he has oversight of all appointed faculty who are located at University Hospitals Cleveland Medical Center, Cleveland Clinic, MetroHealth System, and Veterans Affairs Northeast Ohio Healthcare System.

Along with his role as dean, he will remain as acting director of the NCI designated Case Comprehensive Cancer Center (Case CCC), and Director of the National Center for Regenerative

Medicine. He is the Asa and Patricia Shiverick–Jane Shiverick (Tripp) Professor of Hematological Oncology and Case Western Reserve University Distinguished University Professor (Class of 2013). In 2012, he was the recipient of the Case Western Reserve Medal for Excellence in Health Science Innovation, the highest honor bestowed by the School of Medicine to those advancing research, education and health care.

Dean Gerson's research is focused on DNA repair mechanisms and as targets for anti-cancer therapy, stem cell biology and use of stem cells in multiple therapies, and development of early phase clinical trials for cancer. He also developed the no-blood-no-drug policy (requiring a weekly blood count) that resulted in Sandoz Pharmaceuticals receipt of FDA approval for Clozapine, an effective antipsychosisv drug that caused life-threatening agranulocytosis as a side effect.

Recently, he spearheaded the establishment of our Master's Program in Regenerative Medicine and Entrepreneurship (REGM). In 2004, he became director of the Case CCC, and successfully re-competed for the center's NCI designation in 2004, 2007, 2012, and 2017. He served as director of Seidman Cancer Center at UH from 2004 to 2017. He has served as advisor for many of the top NCI-designated cancer centers in the country and in addition was President of the Association of American Cancer Institutes from 2017 to 2019. He was active in the Cancer Moonshot initiative and the Biden Cancer Initiative, and co-authored a white paper from that group: Future Cancer Research Priorities (Lancet, 2017). Dean Gerson has been a member of the American Association of Physicians since 1997, and has served on and chaired numerous NIH study sections and the National Cancer Institute (NCI) Board of Scientific Advisors. He has earned multiple National Institutes of Health (NIH) grants and published more than 275 journal articles, 270 abstracts, 37 book chapters and 19 patents. Three of his inventions are in phase 2 clinical trials. He is the co-editor of the internationally recognized textbook, *Gene Therapy of Cancer Translational Approaches from Preclinical Studies to Clinical Implementation 3rd ed.* (Elsevier Limited, Oxford, United Kingdom) and the textbook *Clinical Hematology*.





**Katrina Goddard, PhD**  
National Cancer Institute

Katrina Goddard, PhD, was appointed Director of the Division of Cancer Control and Population Sciences (DCCPS) in October 2021. In this position, she oversees a division that covers a wide range of scientific domains and disciplines, including epidemiology, behavioral science, surveillance and statistics, cancer survivorship, and health services and outcomes research. Dr. Goddard is a genetic epidemiologist who focuses on public health genomics and the translation of genomic applications into clinical practice. She has directed or collaborated on over 25 federally funded research studies and has held numerous leadership positions on national research consortia.

Prior to joining NCI, Dr. Goddard was a Distinguished Investigator and Director of Translational and Applied Genomics at the Kaiser Permanente Center for Health Research (CHR) in Portland, OR. Previous to joining CHR in 2007, she was faculty in the Department of Epidemiology and Biostatistics (now Population and Quantitative Health Sciences) at Case Western Reserve University in Cleveland,

OH. She was also a mid-career fellow at the Centers for Disease Control and Prevention in Genetics & Public Health Research and Practice.



**Julie R. Gralow, MD, FACP, FASCO**  
American Society of Clinical Oncology

Dr. Gralow is the Chief Medical Officer and Executive Vice President of the American Society of Clinical Oncology (ASCO) and brings to her role deep expertise in patient care, research, education, and global health.

Previously, she was the Jill Bennett Endowed Professor of Breast Cancer at the University of Washington School of Medicine, Professor in the Clinical Research division of the Fred Hutchinson Cancer Research Center, as well as Director of Breast Medical Oncology at the Seattle Cancer Care Alliance.

Dr. Gralow is strongly committed to advancing equity in cancer care. As founder of the Women's Empowerment Cancer Advocacy Network (WE CAN), she supports patient advocates in low- and middle-resource countries. In addition, she served as an adjunct professor in the University of Washington's Department of Global Health, as a member of the University of Washington's Breast Cancer Equity Initiative, as Medical Director for Women's Cancer-related Population Health at the University of Washington, and as an advisory council member for the Uganda Cancer Institute's adult Hematology/Oncology Fellowship Training Program. Dr. Gralow received the ASCO Humanitarian Award in 2018 for her work in empowering women cancer patients and survivors globally.

She is a recognized leader in breast cancer clinical research, and has conducted clinical trials in breast cancer prevention, treatment, and survivorship. Dr. Gralow served in leadership roles for the SWOG Cancer Research Network funded by the National Cancer Institute (NCI), including as Vice Chair of the Breast Cancer Committee and Executive Officer of Breast and Lung Cancer. Before joining ASCO full-time, Dr. Gralow served the Society in a variety of volunteer and leadership roles, including chairing the ASCO Academic Global Oncology Task Force, co-chairing the ASCO Resource Stratified Guideline



Advisory Group, and serving on the editorial board of the European Society of Medical Oncology (ESMO)/ASCO Global Curriculum in Medical Oncology.

She also has been involved with numerous other nonprofit organizations, including Team Survivor Northwest, an exercise and fitness program for woman cancer survivors which she co-founded in 1995 and serves as Team Physician; a medical advisory committee member for Cierra Sisters African American Support Group; an advisory board member of Global Focus on Cancer; and a Board member of Peace Island Medical Center, a rural access hospital in Washington State.

Dr. Gralow received her bachelor's degree from Stanford University and her medical degree from the University of Southern California School of Medicine. She trained in internal medicine at Brigham and Women's Hospital at Harvard Medical School and completed a medical oncology fellowship at University of Washington/Fred Hutchinson Cancer Center in Seattle.



**Karen Hacker, MD, MPH**

Centers for Disease Control and Prevention

Karen Hacker, MD, MPH, is the Director of the Centers for Disease Control and Prevention's National Center for Chronic Disease Prevention and Health Promotion, where she oversees more than 1,000 staff dedicated to preventing chronic diseases and promoting health across the life span. Before joining CDC in 2019, Dr. Hacker was Director of the Allegheny County Health Department in Pennsylvania. Previously, she held a variety of leadership roles at the Cambridge Health Alliance in Massachusetts, including her role as the Senior Medical Director for Public and Community Health. Dr. Hacker has published extensively and is an expert in community-based participatory research (CBPR). She

served as the Director of the CBPR program of the Harvard Clinical and Translational Science Award Initiative and wrote *Community-Based Participatory Action Research*, a widely used academic text. Dr. Hacker received her MD from Northwestern University School of Medicine and her MPH with Honors from Boston University School of Public Health.



**Peggy A. Hannon, PhD, MPH**

University of Washington

Peggy Hannon, PhD, MPH is a professor at the University of Washington School of Public Health and director of the Health Promotion Research Center, a Center for Disease Control Prevention Research Center. She also co-leads the Optimizing Implementation in Cancer Control (OPTICC) Center, a National Cancer Institute Implementation Science Center for Cancer Control. She completed her training in public health and social psychology at the University of North Carolina at Chapel Hill, and completed a postdoctoral fellowship at the University of Washington. Dr. Hannon's research focuses on dissemination and implementation research, with an emphasis on cancer screening, workplace health promotion, and communities experiencing health disparities.



**Shawna Hudson, PhD**

Rutgers Robert Wood Johnson Medical School

Shawna Hudson, PhD is a Professor, Research Division Chief and Henry Rutgers Chair of Family Medicine and Community Health at the Rutgers Robert Wood Johnson Medical School. She is a full research member of the Rutgers Cancer Institute of New Jersey in the Cancer Prevention and Control Program where she previously served as the Director of Community Research and Acting Director of Community Outreach. She has a secondary faculty appointment in the Rutgers School of Public Health in the Department of Health Behavior, Society and Policy and serves as Director for the Community Engagement Core of the New Jersey Alliance for Clinical and Translational Science (NJ ACTS). Dr. Hudson is a medical sociologist and specializes in primary care research. Her research uses implementation science methods to understand how health care contexts impact patient experience, clinician experience and patient outcomes. She is a nationally recognized leader in research that examines the role of primary care in long-term follow-up care for cancer survivors. She is an appointed member of the New Jersey Commission on Cancer Research and a member the editorial board for the *Journal of*

*Cancer Survivorship*. She served as a standing member of the NIH Dissemination and Implementation Research in Health (DIRH) Study Section and as a member of the National Academies of Sciences, Engineering, and Medicine's (NASEM) Committee on [Implementing High-Quality Primary Care](#). She currently serves on the NASEM Committee on [Transforming Health Care to Create Whole Health: Strategies to Assess, Scale, and Spread the Whole Person Approach to Health](#).



**Chanita Hughes-Halbert, PhD**

Norris Comprehensive Cancer Center, University of Southern California

The goal of Dr. Hughes-Halbert's research program is to identify multilevel determinants of minority health and cancer health disparities and to translate this information into sustainable interventions in clinic and community-based settings to improve cancer outcomes and chronic disease management in diverse populations in local and regional geographic areas. Dr. Hughes-Halbert is a nationally recognized expert in cancer prevention and control among diverse populations and her research is supported by numerous grants from the National Cancer Institute, the National Institutes on Minority Health and Health Disparities, and the Veteran's Affairs Medicine

Center. Previously, she was a member of the Board of Scientific Advisors at the National Cancer Institute and the National Human Genome Research Institute Advisory Council. Dr. Hughes-Halbert is a member of the National Academy of Medicine.



**Detric “Dee” Johnson**  
National Witness Project, Inc.

Detric “Dee” Johnson has served as staff to the National Witness Project, Inc. (501c3) Board of Directors for thirteen years, was Assistant Director of Training for the National Witness Project for eight years, and became Director of the National Witness Project in 2016. Ms. Johnson collaborated with Dr. Deborah Erwin, co-founder of the Witness Project, for 20 years and have almost 20 years of experience in community outreach, recruiting and coordinating volunteers, performing patient and community-based navigation to social determinants of health services, and building community contacts, trust, and networks. Over the past 15 years, Ms. Johnson has become proficient in coordinating research between the National Witness Project membership and scientific investigators through considerable work on many research studies. She is especially skilled at assessing and tailoring programs for successful acceptance at the community level. She has developed a strong Buffalo network of community volunteers and partners including the eight First Ladies of WNY (FLOW) which include eight large African American churches in the Buffalo area. Ms. Johnson has extensive knowledge of program development and tailored implementation, local health systems, public health issues, and health education planning and evaluation.



**Beth Y. Karlan, MD**  
University of California, Los Angeles, Jonsson Comprehensive Cancer Center

Beth Y. Karlan, MD, is Professor and Vice Chair of Women’s Health Research in the Department of Obstetrics and Gynecology at the David Geffen School of Medicine, University of California Los Angeles (UCLA). She is also Director of Cancer Population Genetics at the UCLA-Jonsson Comprehensive Cancer Center. Dr. Karlan’s research focuses on ovarian and other women’s cancers as well as inherited cancer susceptibility. She has authored over 400 peer-reviewed research publications and for over ten years served as Editor-in-Chief of the scientific journals *Gynecologic Oncology* and *Gynecologic Oncology Reports*. She is an American Cancer Society Clinical Research Professor, has served in many national leadership roles including president of the Society of Gynecologic Oncology and has helped train a generation of physicians and scientists. In 2012, Dr. Karlan was appointed by the Obama White House to serve on the National Cancer Advisory Board and in 2015 she was elected to membership in the National Academy of Medicine. Dr. Karlan is a Fellow of the American Society of Clinical Oncology and a member of the National Cancer Policy Forum. Her contributions have been recognized by her peers with multiple awards including a Lifetime Achievement Award from the International Society of Gynecologic Cancer.





**Dhruv Khullar, MD, MPP**  
Weill Cornell Medical College  
The New Yorker

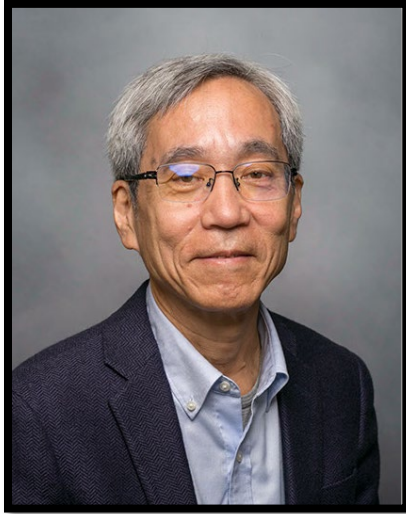
Dhruv Khullar, MD, MPP, is a physician and assistant professor of health policy and economics at Weill Cornell Medical College. He is also a writer at The New Yorker, where he writes about medicine, health care, and politics. He currently serves as Director of Policy Dissemination at the Physicians Foundation Center for Physician Practice and Leadership, and was recently a Senior Research Fellow at NYC Health + Hospitals. His research focuses on value-based care, health disparities, and medical innovation, and has been published in JAMA and The New England Journal of Medicine.

Dr. Khullar earned his medical degree at the Yale School of Medicine and completed his medical training at the Massachusetts General Hospital and Harvard Medical School. He also received a Masters in Public Policy from the Harvard Kennedy School, where he was a fellow at the Center for Public Leadership.



**Abby C. King, PhD**  
Stanford University Medical School

Abby C. King, PhD, is an internationally respected scholar and professor at the Stanford University Medical School. Recipient of the Outstanding Scientific Contributions in Health Psychology Award from the American Psychological Association, her research focuses on the development, evaluation, and translation of public health interventions to reduce disease and promote individual and community well-being. She uses state-of-the-art communication technologies and community-based citizen science approaches to facilitate sustainable environments and address health disparities among disadvantaged populations worldwide. Among the organizations honoring her work are the Center for Active Design, the Society of Behavioral Medicine, the International Society of Behavioral Nutrition and Physical Activity, the AAMC, and Stanford University.



**Lawrence H. Kushi, ScD**  
Kaiser Permanente Northern California

Larry Kushi, ScD, is an epidemiologist conducting research in cancer prevention and outcomes. He was PI of the NCI-funded Cancer Research Network (CRN), providing infrastructure support for cancer research in a nationwide consortium of health care systems. The CRN developed one of the first common data models for research use, known as the Virtual Data Warehouse (VDW), first implemented in the early 2000s. These provide relatively efficient collaborative use of data from electronic health records and other clinical and administrative databases, and have supported numerous research projects in cancer and other conditions. His current NCI-supported research projects include the Pathways Study, a prospective cohort study investigating diet, physical activity, and other factors in breast cancer outcomes and supported through the NCI's cancer epidemiology cohort infrastructure program; the Be-Well Study, a project examining

dietary factors including cruciferous vegetable intake and bladder cancer recurrence; a project examining racial and ethnic disparities in ovarian cancer outcomes; and a program project grant focused on cancer care and outcomes among adolescents and young adults diagnosed with cancer. Among other activities, he chaired the 2012 American Cancer Society Committee on Nutrition and Physical Activity Guidelines for Cancer Prevention, led the methodology committee for the World Cancer Research Fund on its review of the literature relating food, nutrition and physical activity to breast cancer outcomes, and served on the Council for Extramural Grants for the American Cancer Society and the Integration Panel for the Department of Defense Breast Cancer Research Program. A graduate of Amherst College and the Harvard School of Public Health, Larry has held research and faculty positions at the Fred Hutchinson Cancer Center, the University of Minnesota, and Columbia University where he held the Ella McCollum Vahlteich Chair in Nutrition. In 2002, he joined the Division of Research, Kaiser Permanente Northern California, where he is currently Director of Scientific Policy.



**Sue Lin, PhD, MS**  
Health Resources and Services Administration (HRSA)

Sue Lin, PhD, MS, is the Deputy Office Director at the Health Resources and Services Administration (HRSA), Bureau of Primary Health Care, Office of Quality Improvement (OQI). The Office advances the Health Center Program's (HCP's) mission and impact by enabling quality improvement and activating innovation in health centers through program initiatives, training and technical assistance, strategic partnerships, and program evaluation and research. During her tenure at HRSA, Sue has led HRSA's Health Center Program clinical quality initiatives in patient centered medical home transformation, cancer prevention, and cardiovascular disease prevention. Sue developed national training and technical assistance in comprehensive primary care service delivery with behavioral health, substance use disorder, oral health, HIV care, and public health. Sue established the HRSA Advancing Precision Medicine Initiative in partnership with

National Institute of Health to support the participation of individuals from underserved communities in the *All of Us* Research Program. She received her PhD in Epidemiology from the University of Maryland, College Park and MS in Biomedical Engineering from the University of Michigan, Ann Arbor.



**Scott M. Lippman, MD**

Moore's Cancer Center, University of California, San Diego.

Scott M. Lippman, MD, is Distinguished Professor of Medicine; Director, Moore's Cancer Center (MCC); Senior Associate Dean and Associate Vice Chancellor (AVC) for Cancer Research and Care; and holds the Chugai Pharmaceutical Chair at UC San Diego. He currently serves as adjunct professor at the Salk Institute for Biological Studies, Sanford Burnham Prebys Medical Discovery Institute, and MD Anderson Cancer Center (MDACC). Prior to his recruitment to MCC in 2012, he was on faculty at MDACC for 24 years, including holding the Ellen F. Knisely and the Charles A. LeMaistre Distinguished endowed chairs; and serving as Chair of the Departments of Clinical Cancer Prevention and Thoracic/Head and Neck Medical Oncology, respectively, for the 16 years preceding his move to MCC. He has led translational, transdisciplinary programs, notably as PI of an NCI Head and Neck (HN) Cancer SPORE, 2 P01s; and currently leads a Stand Up to Cancer (SU2C) Interception Dream Team award. His research

interests include precancer biology, invasive-disease transition and cancer interception, with continuous NCI funding as a PI since 1990.

Dr. Lippman served on the board of directors for the American Association for Cancer Research (AACR), Association of American Cancer Institutes (AACI; and program committee chair), and the Worldwide Innovative Networking (WIN) consortium; and was founding Editor-in-Chief of the AACR journal Cancer Prevention Research, and appointed chair of the AACR cancer prevention committee by then-president Liz Blackburn. Dr. Lippman was a member of the NCI Board of Scientific Advisors Cancer Center Directors Working Group and the NIH Scientific Review Group: NCI Subcommittee A – Cancer Centers, 2016-2019. He held prior positions as: member of the FDA Oncologic Drugs Advisory Committee (ODAC), chair of the NCI CDP Prevention Study Section, member of the NCI Clinical Trials and Translational Research Advisory Committee (CTAC), chair of the SWOG cancer control research committee (and member of Scientific Advisory Board, SAB), and chair of the American Society of Clinical Oncology (ASCO) cancer prevention committee.

Dr. Lippman has published over 450 peer-reviewed primary research articles, received numerous ASCO, AACR, ACS, and other awards and is an elected member of the Association of American Physicians (AAP) and the National Academies of Sciences, Engineering, and Medicine National Cancer Policy Forum. He was chair of the 2017 NCI Pre-Cancer Genome Atlas (PCGA) think tank; and member of the 2021 Pre-Cancer Atlas (PCA) Human Tumor Atlas Network (HTAN) and 2021 AIM-HI Women's Venture Competition (WVC) review panels (the AIM-HI Accelerator Fund's WVC is a first-of-its-kind program that provides funding, coaching and networking opportunities to women-led oncology start-ups). He has a strong track record, commitment, and passion to train the next generation of scientists and doctors (including serving as member of several PhD thesis committees), and to promote equity, diversity and inclusion in his current/ongoing roles as NCI Comprehensive MCC Director, AVC at UCSD Health System, and nationally in AIM-HI WVC.





**Douglas Lowy, MD**  
National Cancer Institute

Douglas Lowy, MD, is the Acting Director and the Principal Deputy Director of the National Cancer Institute (NCI), National Institutes of Health (NIH). He is also Chief of the Laboratory of Cellular Oncology in the Center for Cancer Research at NCI. He received his medical degree from New York University School of Medicine and trained in internal medicine at Stanford University and dermatology at Yale. He has been the NCI Principal Deputy Director since 2010, was the Acting Director 2015-2017, and resumed this role again for seven months in 2019. Dr. Lowy's research includes the biology of papillomaviruses and the regulation of normal and neoplastic growth. The papillomavirus research is carried out in close collaboration with Dr. John Schiller, with whom he has co-authored more than 150 papers over the past 30 years. In the 1980s, they studied the genetic organization of

papillomaviruses and identified the oncogenes and encoded by the virus. Starting in the 1990's, they have focused on papillomavirus vaccines and the papillomavirus life cycle. Their laboratory was involved in the initial development, characterization, and clinical testing of the preventive virus-like particle-based HPV vaccines that are now used in the three FDA-approved HPV vaccines. Dr. Lowy's growth regulation research includes prior studies that established the importance of the ras gene family in cancer and the main mechanisms by which the NF1 tumor suppressor gene regulates normal cell growth. His growth regulation research is now focused primarily on the DLC family of tumor suppressor genes and their mechanism of action. In response to the COVID-19 epidemic, he has led the SARS-CoV-2 serology research effort at NCI. Dr. Lowy is a member of the National Academy of Sciences (NAS) and of the Institute of Medicine of the NAS. For their HPV vaccine research, he and Dr. Schiller have received numerous honors, including the 2007 Federal Employee of the year Service to America Medal from the Partnership for Public Service, the 2011 Albert B. Sabin Gold Medal Award, the 2012 National Medal of Technology & Innovation (awarded in 2014), and the 2017 Lasker-DeBakey Clinical Medical Research Award. Dr. Lowy has also received the National Medal of Honor for Basic Research from the American Cancer Society and the Science of Oncology Award from the American Society for Clinical Oncology.



**Laura Makaroff, DO**  
American Cancer Society, Inc.

Laura Makaroff, DO, is a family physician and Senior Vice President of Prevention and Early Detection at the American Cancer Society. She oversees a broad portfolio of cancer prevention and early detection initiatives including health equity, cancer screening, HPV vaccination, tobacco control, comprehensive cancer control, and other national partnerships. Prior to joining ACS, Dr. Makaroff served as a Senior Clinical Advisor for the Bureau of Primary Health Care at the Health Resources Services Administration (HRSA). Dr. Makaroff completed a fellowship in health policy at Georgetown University and The Robert Graham Center in Washington, DC. She completed her residency in family medicine at the University of Colorado Hospital and was previously in solo, private practice outside of Denver, CO.





**Carol M. Mangione, MD, MSPH**  
University of California, Los Angeles

Carol M. Mangione, MD, MSPH, is the chief of the Division of General Internal Medicine and Health Services Research; holds the Barbara A. Levey, MD, and Gerald S. Levey, MD, endowed chair in medicine; and is a distinguished professor of medicine at the David Geffen School of Medicine at the University of California, Los Angeles (UCLA), and the executive vice chair for Health Equity and Health Services Research in the Department of Medicine. She is a distinguished professor of public health at the UCLA Fielding School of Public Health, and director of the UCLA Resource Center for Minority Aging Research. She is also a practicing primary care physician at UCLA. Dr. Mangione is the recipient of the 2018 Society of General Internal Medicine John M. Eisenberg National Award for Career Achievement in Research and is a member of the National Academy of Medicine. Dr. Mangione was appointed as chair of the U.S. Preventive Services Task Force in March 2022, served as vice chair from January 2020 to February 2022, and as a member from January 2016 through December 2019.



**Anne McTiernan, MD, PhD**  
Fred Hutchinson Cancer Center

Anne McTiernan, MD, PhD, is a Professor at the Fred Hutchinson Cancer Center and Research Professor at the University of Washington School of Medicine (Gerontology & Geriatric Medicine) and Public Health (Epidemiology) in Seattle. Dr. McTiernan's research focuses on identifying ways to prevent new or recurrent cancer with physical activity, obesity prevention and treatment, and chemoprevention. She is Principal Investigator of several clinical trials and cohort studies investigating the effects of exercise, diet, weight,

hormones, and chemoprevention agents on cancer incidence and prognosis. She was PI of the National Cancer Institute funded (U54) Seattle Transdisciplinary Research on Energetics and Cancer program that investigated obesity prevention and mechanisms linking overweight, obesity and sedentary lifestyles with cancer. She is a Breast Cancer Research Foundation grantee, and has received funding from NIH, NCI, Komen, and other government agencies and foundations.

Dr. McTiernan is an elected Fellow in the American College of Sports Medicine, the Obesity Society, and the American College of Epidemiology. She has published more than 400 scientific manuscripts in major medical journals and is lead author of the book, *Breast Fitness* (St. Martin's Press, 2000). She is editor of two academic texts: *Cancer Prevention and Management through Exercise and Weight Control* (CRC Press LLL, 2005) and *Physical Activity, Dietary Calorie Restriction, and Cancer* (Springer; 2010). She has served on national and international health advisory boards and working groups including the International Agency for Research on Cancer, the American Cancer Society, the US Department of Health and Human Services Physical Activity Guidelines Advisory Committees, the World Cancer Research Foundation, and the Komen for the Cure Scientific Advisory Council.

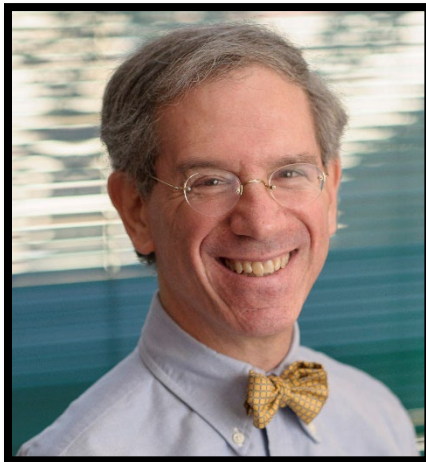
Dr. McTiernan authored two memoirs: *Starved: A Nutrition Doctor's Journey from Empty to Full* (Central Recovery Press, 2016) and *Cured: A Doctor's Journey from Panic to Peace* (Central Recovery Press, December 2020).



**Jane R. Montealegre, PhD, MSPH**  
Baylor College of Medicine

Jane R. Montealegre, PhD, MSPH, is an Assistant Professor in the Department of Pediatrics at Baylor College of Medicine and Assistant Director of Community Outreach and Engagement for the Dan L Duncan Comprehensive Cancer Center. She is a Behavioral Epidemiologist with research expertise in health disparities and preventive healthcare utilization. Her research focuses on the design, implementation, and evaluation of community- and health system-based interventions to address cancer health disparities among medically underserved populations, with particular emphasis on prevention and screening of cervical and other human papillomavirus (HPV)-associated cancers. Dr. Montealegre is principal investigator of an NIH R01-funded pragmatic randomized trial to evaluate the effectiveness and implementation of mailed self-sample HPV testing kits to increase cervical cancer screening uptake among

under-screened women in safety net health systems. She has also led several studies to evaluate the acceptability and feasibility of self-sample HPV testing in diverse populations of underserved women.



**Kenneth Offit, MD, MPH**  
Memorial Sloan Kettering Cancer Center

Kenneth Offit MD, MPH, is Chief of the Clinical Genetics Service at Memorial Sloan Kettering Cancer Center and a Professor of Medicine and Population Health Sciences at the Weill College of Medicine of Cornell University. His laboratory discovered the most commonly recurring *BRCA2* mutation associated with inherited breast, ovarian, prostate, and pancreatic cancer as well genomic variants associated with risk for childhood leukemia, colon, bladder, and prostate cancer. He has written extensively about legal, ethical, and policy aspects of public health genomics. He has served on numerous federal advisory bodies and is an elected member of the National Academy of Medicine and an elected Fellow of the American Association for the Advancement of Science.



**Electra D. Paskett, PhD, MSPH**

James Comprehensive Cancer Center, The Ohio State University

Electra D. Paskett, PhD, MSPH, is the Marion Rowley Professor and Director of the Division of Cancer Prevention and Control in the College of Medicine, a professor in the Division of Epidemiology in the College of Public Health and the Associate Director for Population Sciences and Community Outreach and Co-Program Leader of the Cancer Control Program in the Comprehensive Cancer Center of the Ohio State University (OSU). She is also Founding Director of the Center for Cancer Health Equity at the James Cancer Hospital. Dr. Paskett's almost 400 peer-reviewed publications show-case her work in intervention research directed at cancer prevention, early detection and survivorship issues. Dr. Paskett is the lead of a Program

Project, funded by the National Cancer Institute, which builds on her prior work in understanding cervical cancer disparities in Appalachia, by testing the implementation of 3 projects simultaneously – smoking cessation, increasing HPV vaccination, and addressing cervical cancer screening in 39 health centers throughout Appalachian areas of 4 states, in conjunction with investigators from the University of Kentucky, West Virginia University and University of Virginia. She has numerous awards. In 2016, she was appointed by President Obama as a member of the National Cancer Institute's National Cancer Advisory Board, and in 2020 she was reappointed by Governor Mike DeWine as a member of the Ohio Commission on Minority Health.



**Alpa V. Patel, PhD**

American Cancer Society

Alpa V. Patel, PhD, earned her Bachelor in Science from the University of Florida, her Master in Public Health in Epidemiology from the Rollins School of Public Health at Emory University, and her Doctoral degree in Preventive Medicine with a concentration in Epidemiology from the Keck School of Medicine at the University of Southern California. She is the Senior Vice President of Population Science at the American Cancer Society and serves as the principal investigator of the Cancer Prevention Studies II and 3, which are long-term, large-scale, epidemiologic cohort studies established by the Society. Combined, these

two cohorts include over 1.5 million participants with over 400,000 blood or buccal samples and are focused on better understanding cancer risk as well as improving outcomes and quality of life after a cancer diagnosis. Dr. Patel is a recognized leader in the field of cancer epidemiology with a concentration in physical activity, sedentary behavior, and obesity in relation to cancer risk and survival. She serves on the National Cancer Institute's Board of Scientific Counselors along with several other national and international scientific advisory committees, is a Fellow of the American College of Sports Medicine, on the editorial board of several cancer-related journals, and has been a member of the National Cancer Institute's Cohort Consortium for several years. She has published nearly 250 scientific articles and book chapters, and her research has contributed significantly to national and international cancer prevention guidelines, such as the US Physical Activity Guidelines for Health and the American Cancer Society's Nutrition and Physical Activity Guidelines for both cancer prevention and cancer survivorship.





**Timothy R. Rebbeck, PhD**

Harvard T.H. Chan School of Public Health  
Dana-Farber Cancer Institute

Timothy R. Rebbeck, PhD, is the Vincent L. Gregory Professor of Cancer Prevention at the Harvard TH Chan School of Public Health and the Dana-Farber Cancer Institute. Professor Rebbeck's studies the etiology and prevention of cancer, with an emphasis on cancer disparities and global health. He has directed large, multicenter studies and international consortia that have identified genetic, molecular, and epidemiological factors associated with cancer risk, outcomes, and disparities. He leads the international Men of African Descent and Carcinoma of the Prostate (MADCaP) network and has led a number of consortia studying hereditary cancer risk and prevention. Dr. Rebbeck has received continuous federal research funding since 1994.

In addition to his research activities, Professor Rebbeck leads a number of initiatives on the Harvard Campus. He serves as Associate Director for Cancer Equity and Engagement in the Dana-Farber / Harvard Cancer Center. He is the founding director of the Zhu Family Center for Cancer Prevention at the Harvard TH Chan School of Public Health. In these roles, he fosters a variety of cancer research and educational activities to ensure that Harvard research engages with and positively impacts communities with the greatest disease burden worldwide.

Professor Rebbeck served for 10 years as Editor-in-Chief of the journal *Cancer Epidemiology, Biomarkers and Prevention*. He was a Fulbright Specialist to Africa in 2011-2016 where he developed cancer research capacity in Sub-Saharan Africa. He has received a number of scholarly achievement awards including the Vivian and Meyer P. Potamkin Foundation Award for Breast Cancer Research, the Nathaniel I. Berlin Lectureship from Northwestern University, the British Journal of Surgeons Lectureship from the Royal College of Surgeons, the National Cancer Institute's Director's Service Award, the Spirit of Empowerment Award from FORCE: Facing Our Risk of Cancer Empowered, the Joseph F. Fraumeni, Jr. Distinguished Achievement Award from the American Society for Preventive Oncology, and the American Society of Clinical Oncology - American Cancer Society Award and Lecture.



**Ruth Rechis, PhD**

The University of Texas MD Anderson Cancer Center

Ruth Rechis, PhD, serves on the Cancer Prevention and Control Platform at The University of Texas MD Anderson Cancer Center to shape and stage new and emerging cancer prevention and early detection projects aimed at population level impact. Dr Rechis is the Director of Be Well Communities™ which aim to mobilize communities to promote wellness and stop cancer before it starts. Be Well Communities unites individuals, schools, workplaces, government agencies, health care providers, and policy-makers to carry out community-led solutions that will make positive, long-lasting change in people's lives. Dr Rechis holds a PhD in educational psychology from The University of Texas at Austin and has authored numerous publications and reports and spoken to scientific and lay audiences on topics such as community engagement, program evaluation, and cancer control. Prior to coming to MD Anderson, Dr. Rechis was the Vice President of the Mission and Strategy for the LIVESTRONG Foundation. During her more than ten year tenure, Dr. Rechis worked on all mission-related initiatives of the

Foundation including establishing and leading the Office of Evaluation and Research as well as building and enhancing high-value programs aimed at raising awareness, increasing knowledge, shaping attitudes and changing behaviors.



**Rachel C. Shelton, ScD, MPH**

Columbia University

Rachel Shelton, ScD, MPH, is a social and behavioral scientist with training in cancer and social epidemiology, and expertise in implementation science, sustainability, health equity, and community-based participatory research. She is Associate Professor of Sociomedical Sciences at Columbia University's Mailman School of Public Health, where she is Co-Director of the Community Engagement Core Resource at the Irving Institute for Clinical and Translational Research (CTSA), and leads a university-wide Initiative on Implementation Science. Dr. Shelton has taught implementation science courses and trainings nationally and globally for nearly ten years, and has been core faculty for the Training Institute for Dissemination & Implementation Research in Health (TIDIRH) through NIH, TIDIRH in Ireland and Australia, and the Institute for Implementation Science Scholars. Dr. Shelton has 15 years of experience conducting mixed-methods research focused on advancing

the implementation and sustainability of evidence-based interventions in community and clinical settings to address health inequities, particularly in the context of cancer prevention and screening. Within implementation science, she has studies funded on sustainability, adaptation, and de-implementation, and focuses on applying implementation research and community engagement approaches to promote health equity; her research program is funded by NIA, NCI, NIMHD and American Cancer Society.



**Mary Beth Terry, PhD**  
Columbia University

Mary Beth Terry, PhD, is a cancer epidemiologist. She leads the Chronic Disease Unit in the Department of Epidemiology and is an Associate Director of Population Science and Community Outreach at Columbia University's Herbert Irving Comprehensive Cancer Center (HICCC). She has led molecular epidemiologic studies focusing on the role of genetics, epigenetics, and other biomarkers in modifying the cancer risk from environmental exposures for over 20 years. She currently leads several consortia including an international breast cancer cohort study, a Health Disparities Center for Reducing Multiple Chronic Diseases and a large study investigating novel biomarkers for cancer risk assessment. She is dedicated to training and mentoring the next generation to increase diversity in scientific research. She has received school-wide mentoring awards and leads several NIH training programs. Dr. Terry teaches epidemiological methods to graduate students and is currently teaching

data science methods to undergraduate students and medical students. Prior to receiving her PhD in Epidemiology, she received a Masters degree in econometrics.



**Maria D. Thomson, PhD**  
Virginia Commonwealth University

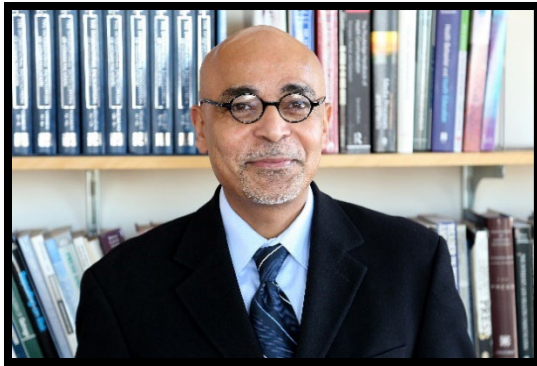
Maria Thomson, PhD, is an Associate Professor in the Virginia Commonwealth University School of Medicine, Department of Health Behavior and Policy and is the Director of Community Engaged Research which houses the Community Champions program at the NCI Designated Massey Cancer Center. Dr. Thomson is a social and behavioral scientist with interdisciplinary training in anthropology, population and public health sciences. Her program of research focuses on promoting informed and shared decision making through effective communication and measuring and evaluating sociocultural and health disparities that influence patient information needs, knowledge, attitudes, access and behaviors.





**Robin C. Vanderpool, DrPH**  
National Cancer Institute

Robin Vanderpool, DrPH, is chief of the Health Communication and Informatics Research Branch in the Division of Cancer Control and Population Sciences at the National Cancer Institute (NCI). As branch chief, Dr. Vanderpool leads the development of health communication research initiatives in areas such as cancer communication surveillance, patient-centered communication, telehealth and cancer care, and health misinformation. Dr. Vanderpool also contributes to the Division's efforts to support NCI-designated cancer centers' community outreach and engagement activities. Prior to joining NCI, Dr. Vanderpool was a professor in the College of Public Health at the University of Kentucky (UK) and associate director for community outreach and engagement at the UK Markey Cancer Center. Dr. Vanderpool earned her Doctorate of Public Health, with a concentration in Health Behavior, from the University of Kentucky. She received her Masters of Public Health in Public Health Education from Western Kentucky University and her Bachelor of Science in Psychobiology from Centre College.



**Kasisomayajula "Vish" Viswanath, PhD**  
Harvard T.H. Chan School of Public Health and  
Dana-Farber Cancer Institute

Kasisomayajula "Vish" Viswanath, PhD, is Lee Kum Kee Professor of Health Communication in the Department of Social and Behavioral Sciences at the Harvard T. H. Chan School of Public Health (HSPH) and in the McGraw-Patterson Center for Population Sciences at the Dana-Farber Cancer Institute (DFCI). He is also the Faculty Director of the Health Communication Core of the Dana-Farber/Harvard Cancer Center (DF/HCC). Other additional administrative and scientific leadership positions held by Dr. Viswanath include:

Director of the Center for Translational Communication Science, DFCI/Harvard Chan; Director, Harvard Chan, India Research Center and Co-Director, Lee Kum Sheung Center for Health and Happiness, Harvard Chan. He is the founding Director of DF/HCC's Enhancing Communications for Health Outcomes (ECHO) Laboratory.

Dr. Viswanath's work, drawing from literatures in communication science, social epidemiology, and social and health behavior sciences, focuses on translational communication science to influence public health policy and practice. His primary research is in documenting the relationship between communication inequalities, poverty and health disparities, and knowledge translation to address health disparities. He has written more than 280 journal articles and book chapters concerning communication inequalities and health disparities, knowledge translation, public health communication campaigns, e-health and digital divide, public health preparedness and the delivery of health communication interventions to underserved populations. He is the Co-Editor of four books and monographs: *Mass Media, Social Control and Social Change* (Iowa State University Press, 1999), *Health Behavior and Health Education: Theory, Research & Practice, 5<sup>th</sup> Ed.* (Jossey Bass, 2015), *The Role of Media in Promoting and Reducing Tobacco Use* (National Cancer Institute, 2008) and *A Socioecological Approach to Addressing Tobacco-Related Health Disparities* (National Cancer Institute, 2017) and a co-author of *The First 1000 Days of Life: Lessons from Social and Behavior Change Communication*. He was also the Editor of the





Social and Behavioral Research section of the 12-volume *International Encyclopedia of Communication* (Blackwell Publishing, 2008).

He has served and continuing to serve on several national committees including for the US Department of Health and Human Services, the Centers for Disease Control and Prevention and the National Academy of Sciences, Engineering and Medicine (NASEM). In recognition of his academic and professional achievements, Dr. Viswanath received several awards including the Postdoctoral Mentor of the Year Award from the Dana-Farber Cancer Institute, Joseph W. Cullen Memorial Award For Excellence in Tobacco Research, American Society for Preventive Oncology, the Dale Brashers Distinguished Mentorship Award, National Communication Association, Outstanding Health Communication Scholar Award jointly given out by the International Communication Association and the National Communication Association and the Mayhew Derryberry Award from the American Public Health Association (APHA) for his contribution to health education research and theory and the CLA Alumnus of Notable Achievement, University of Minnesota. He delivered the 23<sup>rd</sup> Annual Aubrey Fisher Lecture at University of Utah in 2009. He was elected Fellow of the International Communication Association (2011), the Society for Behavioral Medicine (2008) and the Midwest Association for Public Opinion Research (2006).



# NATIONAL CANCER POLICY FORUM

# ABOUT THE FORUM



The National Cancer Policy Forum serves as a trusted venue in which experts can identify emerging high-priority policy issues in cancer research and cancer care and work collaboratively to examine those issues through convening activities focused on opportunities for action. The Forum provides a continual focus within the National Academies on cancer, addressing issues in science, clinical medicine, public health, and public policy that are relevant to the goal of reducing the cancer burden, through prevention and by improving the care and outcomes for those diagnosed with cancer. Forum activities inform the cancer community and the public about critical policy issues through workshops and published reports. The Forum has members with a broad range of expertise in cancer, including patient advocates, clinicians, and basic, translational, and clinical scientists. Members represent patients, federal agencies, academia, professional organizations, nonprofits, and industry.

The Forum has addressed a wide array of topics, including:

- enhancing collaborations to accelerate research and development;
- improving the quality and value of care for patients who have been diagnosed with or are at risk for cancer;
- developing tools and technologies to enhance cancer research and care; and
- examining factors that influence cancer incidence, mortality, and disparities.

[nationalacademies.org/NCPF](https://nationalacademies.org/NCPF)

To receive updates on the National  
Cancer Policy Forum, visit

[nationalacademies.org/NCPF](https://nationalacademies.org/NCPF)

#NatlCancerForum

NATIONAL  
ACADEMIES *Sciences  
Engineering  
Medicine*

## Upcoming and Recent Workshops

### Incorporating Integrated Diagnostics into Precision Oncology Care

**March 6-7, 2023**

Innovations in the diagnostic specialties have the potential to dramatically reshape cancer diagnosis and enable precision therapy. Spurred by advances in informatics, there are opportunities to combine and collate information from imaging, pathology, and molecular testing. Multidisciplinary collaboration among pathologists, radiologists, and oncologists—supplemented by machine-learning based tools—could facilitate a more precise understanding of a patient's diagnosis, and what treatment strategies may be most effective for improved patient outcomes. Integrated diagnostics also have the potential to improve patient access to subspecialty expertise, particularly in community-based settings of cancer care.

Despite the promise of integrated diagnostics for improving cancer diagnosis and care, there is no uniform strategy for its development, implementation, and use. A National Academies workshop could help the cancer community better define the purpose, goals, and components of integrated diagnostics and provide a venue to discuss policy, research, technical, and workforce considerations to help realize the potential of integrated diagnostics.

Workshop website in development

### Addressing Resistance in the Development of Cancer Immune Modulator Therapeutics

**November 14-15, 2022**

This workshop will consider the current challenges related to resistance to immune modulator therapies and discuss potential policy levers that could help to overcome these challenges. The workshop will feature presentations and discussions on topics such as:

- An overview of the unique types of immunotherapy resistance based on the causes of resistance, and gaps in current understanding.
- Policy challenges and opportunities to address the problem of resistance, including:
  - Criteria to move single agents into clinical trials, criteria to use single agents in combination therapy development, as well as criteria to assess cancer immunotherapy combinations in early-phase clinical trials.
  - The roles of preclinical modeling and clinical and predictive biomarkers (e.g., companion diagnostics, in vivo imaging) for assessing safety and efficacy.
  - The types of clinical trial designs needed for regulatory approval.
  - Use of big data to aid in determining the dominant drivers of cancer immunotherapy resistance and to predict immunotherapy responses.

[Workshop website](#)



### Advancing Progress in Cancer Prevention and Risk Reduction

**June 27-28, 2022**

This workshop will consider the current state of knowledge on risk factors for cancer and best practices for cancer prevention and risk reduction. Workshop sessions will focus on:

- The Evidence Base on Risk Factors for Cancer
- Implementing Population-Based Cancer Prevention Strategies
- Innovative Strategies for Population-Based Cancer Prevention
- Implementing Clinic-Based Cancer Prevention Strategies
- Innovative Strategies for Clinic-Based Cancer Prevention
- Communicating about Cancer Risk and Prevention
- Opportunities to Spur Progress in Cancer Prevention and Risk Reduction

[Workshop website](#)

### Family Caregiving for People With Cancer and Other Serious Illnesses

**Collaborative workshop convened by:**

National Cancer Policy Forum  
Roundtable on Quality Care for People with Serious Illness  
Forum on Aging, Disability, and Independence

**May 16-17, 2022**

This workshop used cancer as a lens to examine issues that affect family caregivers for people with serious illnesses. Presentations and discussions included: strategies to better capture, understand, and act on family caregiver input and experience to improve patient care and to support family caregivers; research and policy opportunities to better support family caregiving; and strategies to better embed a health equity focus in family caregiving research, policy and practice.

[Workshop videos and presentations](#)

### Innovation in Electronic Health Records for Oncology Care, Research, and Surveillance

**February 28-March 1, 2022**

Electronic health records (EHRs) affect clinician and practice safety and efficiency, the quality of care, patient satisfaction, and data acquisition. This workshop, convened by the Forum in collaboration with the Computer Science and Telecommunications Board, examined potential opportunities to improve patient care and outcomes, as well as strategies to enhance innovation and to promote health equity in the development, implementation, and use of EHRs in oncology care, research, and surveillance.

[Workshop videos and presentations](#)

## Recent Workshops

### The Role of Companion Animals as Sentinels for Predicting Environmental Exposure Effects on Aging and Cancer Susceptibility in Humans

December 1-3, 2021

Companion animals have a potential role as sentinels of relevant, shared environmental exposures that may affect human aging and cancer. This workshop examined the opportunities and challenges for using this novel translational approach to exposure science as a way to accelerate the knowledge turn in this evolving field.

[Workshop videos and presentations](#)

[Poster session](#)

[Proceedings](#)

### Promoting Health Equity in Cancer Care

October 25-26, 2021

Significant advancements in the delivery of high-quality cancer care and improvements in patient outcomes have been achieved in recent years; however, such progress has not been evenly distributed across the U.S. population. The Forum, in collaboration with the Roundtable on the Promotion of Health Equity, convened a workshop to examine opportunities to improve health equity for patients with cancer.

[Workshop videos and presentations](#)

#### Webinar Series: Addressing Social Needs in Cancer Care

In advance of the workshop, *Promoting Health Equity in Cancer Care*, the Forum convened a webinar series focusing on opportunities to better assess and address the social needs of patients with cancer.

- May 10, 2021: [Food Insecurity among Patients with Cancer](#)
- August 9, 2021: [Housing Insecurity among Patients with Cancer](#)
- September 21, 2021: [Transportation Needs among Patients with Cancer](#)

### Innovation in Cancer Care and Cancer Research in the Context of the COVID-19 Pandemic

July 26-27, 2021

The COVID-19 pandemic has led to dramatic adjustments in cancer care delivery and cancer research. This workshop examined these changes, and considered lessons learned in order to improve the delivery of high-quality cancer care and the conduct of cancer clinical trials in the post-pandemic era. Participants identified potential policy opportunities to retain and build on the beneficial changes that occurred during the pandemic.

[Workshop videos and presentations](#)

[Proceedings](#)

### Impact of the Affordable Care Act on Cancer Prevention and Cancer Care

March 1-2, 2021

The Forum convened this workshop to examine the evidence base on how the Patient Protection and Affordable Care Act (ACA) has altered the landscape of cancer prevention and care delivery. Workshop presentations and discussions reviewed the effects of the ACA on people at risk for or living with cancer and provided insight into remaining policy challenges that could inform future efforts to improve the delivery of high-quality cancer care across the care continuum.

[Workshop videos and presentations](#)

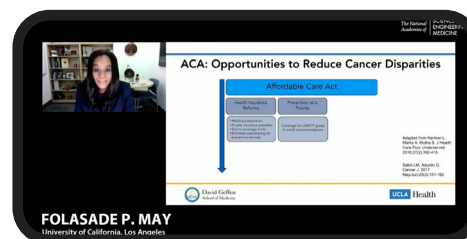
[Proceedings](#)

[Reels](#)

[Interactive overview](#)



Still from the workshop reel: Opportunities for Action: Strengthening Patient, Clinician, and Community Engagement



Still from the workshop reel: Improving Access to High-Quality Prevention and Care



Still from the workshop reel: Addressing the Social Determinants of Health to Address Health Equity



## FORUM SPONSORS

- Centers for Disease Control and Prevention
- National Institutes of Health/National Cancer Institute
- American Association for Cancer Research
- American Cancer Society
- American College of Radiology
- American Society of Clinical Oncology
- Association of American Cancer Institutes
- Association of Community Cancer Centers
- Bristol-Myers Squibb
- Cancer Support Community
- Flatiron Health
- Merck
- National Comprehensive Cancer Network
- National Patient Advocate Foundation
- Novartis Oncology
- Oncology Nursing Society
- Partners in Health
- Pfizer Inc.
- Sanofi
- Society for Immunotherapy of Cancer

## MEMBERSHIP OF THE FORUM

**Edward J. Benz, Jr., M.D.** (Chair)  
Dana-Farber Cancer Institute

**Peter C. Adamson, M.D.**  
Sanofi

**Garnet Anderson, Ph.D.**  
Fred Hutchinson Cancer Center

**Karen Basen-Engquist, Ph.D., M.P.H.**  
The University of Texas MD Anderson Cancer Center

**Smita Bhatia, M.D., M.P.H.**  
University of Alabama at Birmingham

**Chris Boshoff, M.D., Ph.D., F.MedSci.**  
Pfizer Inc.

**Cathy Bradley, Ph.D.**  
University of Colorado Comprehensive Cancer Center

**Otis W. Brawley, M.D.**  
Johns Hopkins University

**Robert W. Carlson, M.D.**  
National Comprehensive Cancer Network

**Christina Chapman, M.D.**  
Baylor College of Medicine

**Gwen Darien, B.A.**  
National Patient Advocate Foundation

**Nancy E. Davidson, M.D.**  
Fred Hutchinson Cancer Center/Seattle Cancer Care Alliance

**James H. Doroshow, M.D.**  
National Cancer Institute

**Nicole F. Dowling, Ph.D.**  
Centers for Disease Control and Prevention

**Scot W. Ebbinghaus, M.D.**  
Merck

**Kojo S.J. Elenitoba-Johnson, M.D.**  
University of Pennsylvania Perelman School of Medicine

**Stanton L. Gerson, M.D.**  
Case Comprehensive Cancer Center

**Julie R. Gralow, M.D., FACP, FASCO**  
American Society of Clinical Oncology

**Roy S. Herbst, M.D., Ph.D.**  
Yale School of Medicine

**Hedvig Hricak, M.D., Ph.D.**  
Memorial Sloan Kettering Cancer Center

**Chanita Hughes-Halbert, Ph.D.**  
USC Norris Comprehensive Cancer Center

**Roy A. Jensen, M.D.**  
The University of Kansas Cancer Center

**Randy A. Jones, Ph.D., R.N., FAAN**  
University of Virginia School of Nursing

**Beth Y. Karlan, M.D.**  
UCLA Jonsson Comprehensive Cancer Center

**Samir N. Khleif, M.D.**  
Georgetown University

**Mia Levy, M.D., Ph.D.**  
Foundation Medicine

**Scott M. Lippman, M.D.**  
UCSD Moores Cancer Center

**Larissa Nekhlyudov, M.D., M.P.H.**  
Harvard Medical School; Brigham & Women's Hospital; and Dana-Farber Cancer Institute

**Randall Oyer, M.D.**  
Penn Medicine Lancaster General Health;  
Association of Community Cancer Centers

**Cleo A. Ryals, Ph.D.**  
Flatiron Health

**Richard L. Schilsky, M.D., FASCO**  
University of Chicago

**Julie Schneider, Ph.D.**  
Food and Drug Administration

**Susan M. Schneider, Ph.D., R.N., AOCN, FAAN**  
Duke University School of Nursing

**Lawrence N. Shulman, M.D., MACP, FASCO**  
University of Pennsylvania Abramson Cancer Center

**Heidi Smith, M.H.S., B.A.**  
Novartis Pharmaceuticals

**Lara Strawbridge, M.P.H.**  
Centers for Medicare & Medicaid Services

**George J. Weiner, M.D.**  
University of Iowa Holden Comprehensive Cancer Center

**Robert A. Winn, M.D.**  
Virginia Commonwealth University Massey Cancer Center

## FORUM STAFF

**Sharyl Nass, Ph.D.**  
Forum Co-Director  
Senior Director, Board on Health Care Services

**Erin Balogh, M.P.H.**  
Forum Co-Director

**Francis Amankwah, M.P.H.**  
Program Officer

**Lori Benjamin Brenig, M.P.H.**  
Research Associate

**Arzoo Tayyeb, M.B.A.**  
Finance Business Partner

## Health and Medicine Division Board on Health Care Services

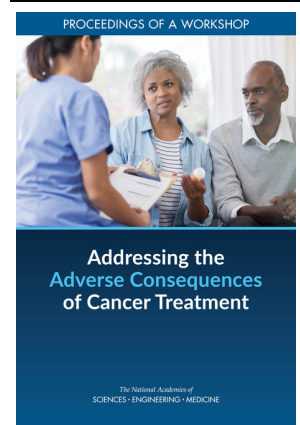
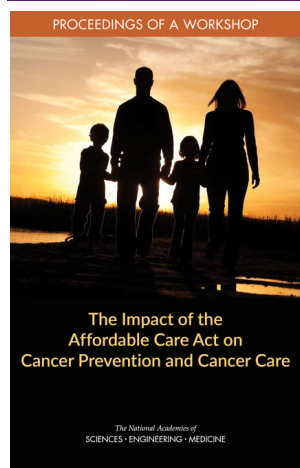
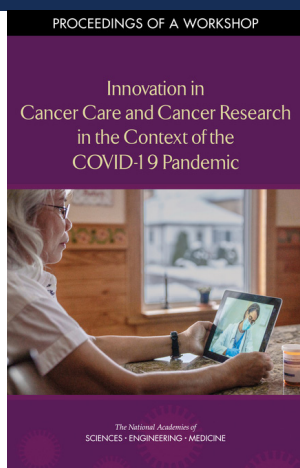
**NATIONAL ACADEMIES** Sciences  
Engineering  
Medicine

The National Academies provide independent, trustworthy advice that advances solutions to society's most complex challenges.  
[www.nationalacademies.org](http://www.nationalacademies.org)



# NATIONAL CANCER POLICY FORUM

# WORKSHOP PROCEEDINGS AND RELATED PUBLICATIONS



## WORKSHOP PROCEEDINGS

### 2022

Innovation in Electronic Health Records for Cancer Care, Research, and Surveillance: A Workshop (In Process)  
Promoting Health Equity in Cancer Care: Proceedings of a Workshop (In Process)  
The Role of Companion Animals as Sentinels for Predicting Environmental Exposure Effects on Aging and Cancer Susceptibility in Humans: Proceedings of a Workshop  
Innovation in Cancer Care and Cancer Research in the Context of the COVID-19 Pandemic: Proceedings of a Workshop  
Impact of the Affordable Care Act on Cancer Prevention and Cancer Care: Proceedings of a Workshop

### 2021

Addressing the Adverse Consequences of Cancer Treatment: Proceedings of a Workshop  
Opportunities and Challenges for Using Digital Health Applications in Oncology: Proceedings of a Workshop  
Improving the Evidence Base for Treatment Decision Making for Older Adults with Cancer: Proceedings of a Workshop— in Brief  
Advancing Progress in the Development and Implementation of Effective, High-Quality Cancer Screening: Proceedings of a Workshop  
Drug Research and Development for Adults Across the Older Age Span: Proceedings of a Workshop

### 2020

Reflections on Sharing Clinical Trial Data: Challenges and a Way Forward: Proceedings of a Workshop  
Applying Big Data to Address the Social Determinants of Health in Oncology: Proceedings of a Workshop  
Health Literacy and Communication Strategies in Oncology: Proceedings of a Workshop  
Enhancing Scientific Reproducibility in Biomedical Research Through Transparent Reporting: Proceedings of a Workshop

### 2019

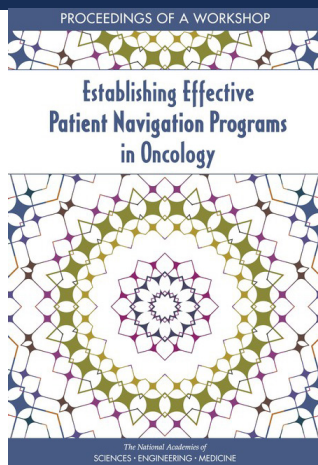
Developing and Sustaining an Effective and Resilient Oncology Careforce: Proceedings of a Workshop  
Advancing Progress in the Development of Combination Cancer Therapies with Immune Checkpoint Inhibitors: Proceedings of a Workshop  
Improving Cancer Diagnosis and Care: Clinical Application of Computational Methods in Precision Oncology: Proceedings of a Workshop

To receive updates on the  
National Cancer Policy Forum, visit:

[nationalacademies.org/NCPF](https://nationalacademies.org/NCPF)

#NatlCancerForum

NATIONAL  
ACADEMIES  
Sciences  
Engineering  
Medicine



# WORKSHOP PROCEEDINGS

2018

---

Improving Cancer Diagnosis and Care: Patient Access to Oncologic Imaging and Pathology Expertise and Technologies: Proceedings of a Workshop  
Establishing Effective Patient Navigation Programs in Oncology: Proceedings of a Workshop  
Long-Term Survivorship Care After Cancer Treatment: Proceedings of a Workshop

2017

---

The Drug Development Paradigm in Oncology: Proceedings of a Workshop  
Cancer Care in Low-Resource Areas: Cancer Treatment, Palliative Care, and Survivorship Care: Proceedings of a Workshop  
Implementation of Lung Cancer Screening: Proceedings of a Workshop  
Incorporating Weight Management and Physical Activity Throughout the Cancer Care Continuum: Proceedings of a Workshop

2016

---

Policy Issues in the Clinical Development and Use of Immunotherapy for Cancer Treatment: Proceedings of a Workshop  
Cancer Care in Low-Resource Areas: Cancer Prevention and Early Detection: Workshop Summary  
Appropriate Use of Advanced Technologies for Radiation Therapy and Surgery in Oncology: Workshop Summary

2015

---

Comprehensive Cancer Care for Children and Their Families: Summary of a Joint Workshop by the Institute of Medicine and the American Cancer Society  
Policy Issues in the Development and Adoption of Biomarkers for Molecularly Targeted Cancer Therapies: Workshop Summary  
Assessing and Improving the Interpretation of Breast Images: Workshop Summary  
Role of Clinical Studies for Pets with Naturally Occurring Tumors in Translational Cancer Research: Workshop Summary

2014

---

Ensuring Patient Access to Affordable Cancer Drugs: Workshop Summary  
Contemporary Issues for Protecting Patients in Cancer Research: Workshop Summary

2013

---

Identifying and Addressing the Needs of Adolescents and Young Adults with Cancer: Workshop Summary  
Implementing a National Cancer Clinical Trials System for the 21st Century: Second Workshop Summary  
Sharing Clinical Research Data: Workshop Summary  
Delivering Affordable Cancer Care in the 21st Century: Workshop Summary  
Reducing Tobacco-Related Cancer Incidence and Mortality: Workshop Summary

2012

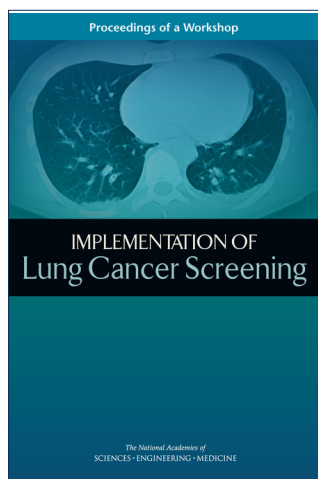
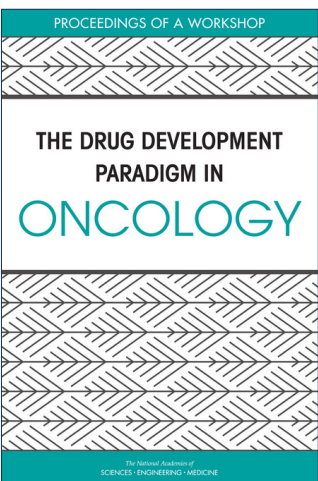
---

The Role of Obesity in Cancer Survival and Recurrence: Workshop Summary  
Informatics Needs and Challenges in Cancer Research: Workshop Summary  
Facilitating Collaborations to Develop Combination Investigational Cancer Therapies: Workshop Summary

2011

---

Implementing a National Cancer Clinical Trials System for the 21st Century: Workshop Summary  
Patient-Centered Cancer Treatment Planning: Improving the Quality of Oncology Care: Workshop Summary  
The National Cancer Policy Summit: Opportunities and Challenges in Cancer Research and Care  
Nanotechnology and Oncology: Workshop Summary



## IMPLEMENTING A NATIONAL CANCER CLINICAL TRIALS SYSTEM FOR THE 21ST CENTURY

Workshop Summary



INSTITUTE OF MEDICINE OF THE NATIONAL ACADEMIES

# WORKSHOP PROCEEDINGS

## 2011, continued

---

Implementing a National Cancer Clinical Trials System for the 21st Century: Workshop Summary  
Patient-Centered Cancer Treatment Planning: Improving the Quality of Oncology Care: Workshop Summary  
The National Cancer Policy Summit: Opportunities and Challenges in Cancer Research and Care  
Nanotechnology and Oncology: Workshop Summary

## 2010

---

Genetic Testing (with the National Research Council): Summary of a Workshop  
Extending the Spectrum of Precompetitive Collaboration in Oncology Research: Workshop Summary  
A Foundation for Evidence-Driven Practice: A Rapid Learning System for Cancer Care: Workshop Summary  
Policy Issues in the Development of Personalized Medicine in Oncology: Workshop Summary

## 2009

---

Assessing and Improving Value in Cancer Care: Workshop Summary  
Ensuring Quality Cancer Care Through the Oncology Workforce: Sustaining Care in the 21st Century: Workshop Summary  
Multi-Center Phase III Clinical Trials and the NCI Cooperative Group Program: Workshop Summary

## 2008

---

Implementing Colorectal Cancer Screening: Workshop Summary  
Improving the Quality of Cancer Clinical Trials: Workshop Summary

## 2007

---

Cancer-Related Genetic Testing and Counseling: Workshop Proceedings  
Cancer in Elderly People: Workshop Proceedings  
Implementing Cancer Survivorship Care Planning: Workshop Summary

## 2006

---

Effect of the HIPAA Privacy Rule on Health Research: Proceedings of a Workshop  
Developing Biomarker-Based Tools for Cancer Screening, Diagnosis, and Treatment: Workshop Summary

## EXTENDING THE SPECTRUM OF PRECOMPETITIVE COLLABORATION IN ONCOLOGY RESEARCH

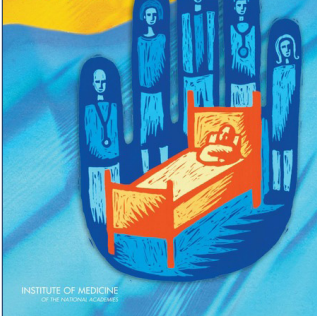
WORKSHOP SUMMARY



INSTITUTE OF MEDICINE OF THE NATIONAL ACADEMIES

## ASSESSING AND IMPROVING VALUE IN CANCER CARE

Workshop Summary



INSTITUTE OF MEDICINE OF THE NATIONAL ACADEMIES

## Implementing COLORECTAL CANCER Screening

WORKSHOP SUMMARY



INSTITUTE OF MEDICINE OF THE NATIONAL ACADEMIES



# RELATED WORK

## CONSENSUS STUDY REPORTS BUILDING ON NCPF WORK

Childhood Cancer and Functional Impacts Across the Care Continuum (2021)

Report: [nap.edu/catalog/25944](http://nap.edu/catalog/25944)

Diagnosing and Treating Adult Cancers and Associated Impairments (2021)

Report: [nap.edu/catalog/25956](http://nap.edu/catalog/25956)

Guiding Cancer Control: A Path to Transformation (2019)

Report: [nap.edu/catalog/25438](http://nap.edu/catalog/25438)

Making Medicines Affordable: A National Imperative (2017)

Report: [nap.edu/catalog/24946](http://nap.edu/catalog/24946)

Biomarker Tests for Molecularly Targeted Therapies: Key to Unlocking Precision Medicine (2016)

Report: [nap.edu/catalog/21860](http://nap.edu/catalog/21860)

Ovarian Cancers: Evolving Paradigms in Research and Care (2016)

Report: [nap.edu/catalog/21841](http://nap.edu/catalog/21841)

Delivering High-Quality Cancer Care: Charting a New Course for a System in Crisis (2013)

Report: [nap.edu/catalog/18359](http://nap.edu/catalog/18359)

Evolution of Translational Omics: Lessons Learned and the Path Forward (2012)

Report: [nap.edu/catalog/13297](http://nap.edu/catalog/13297)

A National Cancer Clinical Trials System for the 21st Century: Reinvigorating the NCI Cooperative Group Program (2010)

Report: [nap.edu/catalog/12879](http://nap.edu/catalog/12879)

Evaluation of Biomarkers and Surrogate Endpoints in Chronic Disease (2010)

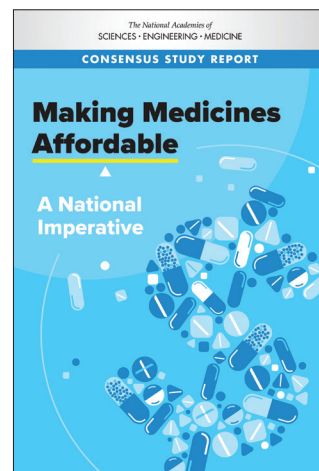
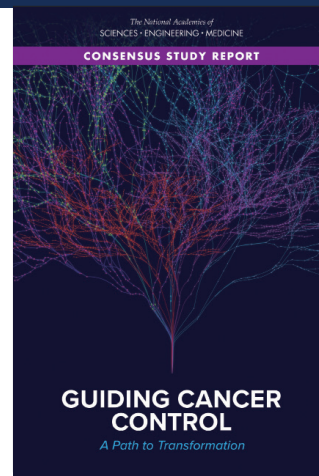
Report: [nap.edu/catalog/12869](http://nap.edu/catalog/12869)

Beyond the HIPAA Privacy Rule: Enhancing Privacy, Improving Health Through Research (2009)

Report: [nap.edu/catalog/12458](http://nap.edu/catalog/12458)

Cancer Biomarkers: The Promises and Challenges of Improving Detection and Treatment (2007)

Report: [nap.edu/read/11892](http://nap.edu/read/11892)

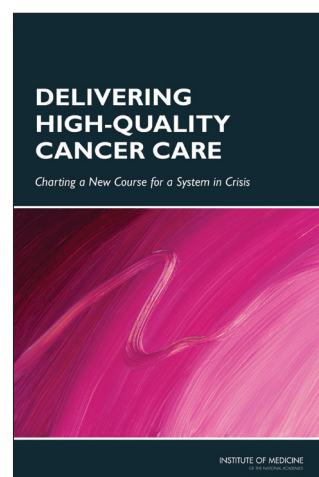
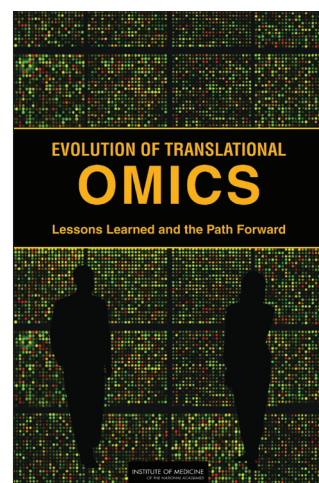


## INDIVIDUALLY AUTHORED PUBLICATIONS BUILDING ON NCPF WORK

Independent, individually authored articles arising from NCPF workshops—and consensus studies building on NCPF work—include:

2022

- Davidson, N. E., K. E. Knudsen, S. F. Nasso, R. Oyer, S. Pergam, L. Strawbridge, and L. Shulman. 2022. Cancer care at the beginning of the covid-19 pandemic: Effects on patients and early interventions to mitigate stresses on care. *Cancer Journal* 28(2):107-110. [https://journals.lww.com/journalppo/Abstract/2022/03000/Cancer\\_Care\\_at\\_the\\_Beginning\\_of\\_the\\_COVID\\_19.5.aspx](https://journals.lww.com/journalppo/Abstract/2022/03000/Cancer_Care_at_the_Beginning_of_the_COVID_19.5.aspx)
- Hyer, R. N. 2022. Insights for oncology trials garnered from the rapid development of an mrna covid-19 vaccine. *Cancer Journal* 28(2):146-150. [https://journals.lww.com/journalppo/Fulltext/2022/03000/Insights\\_for\\_Oncology\\_Trials\\_Garnered\\_From\\_the.12.aspx](https://journals.lww.com/journalppo/Fulltext/2022/03000/Insights_for_Oncology_Trials_Garnered_From_the.12.aspx)
- Karzai, F., and W. L. Dahut. 2022. Lessons from the impact of the covid-19 pandemic at the national cancer institute: Cancer research and care. *Cancer Journal* 28(2):118-120. [https://journals.lww.com/journalppo/Abstract/2022/03000/Lessons\\_From\\_the\\_Impact\\_of\\_the\\_COVID\\_19\\_Pandemic.7.aspx](https://journals.lww.com/journalppo/Abstract/2022/03000/Lessons_From_the_Impact_of_the_COVID_19_Pandemic.7.aspx)
- Nekhlyudov, L., L. A. Fleisher, and P. B. Jacobsen. 2022. Telemedicine across the cancer care continuum: Evidence and opportunities for clinical care, research, and policy. *Cancer Journal* 28(2):121-124. [https://journals.lww.com/journalppo/Abstract/2022/03000/Telemedicine\\_Across\\_the\\_Cancer\\_Care\\_Continuum\\_.8.aspx](https://journals.lww.com/journalppo/Abstract/2022/03000/Telemedicine_Across_the_Cancer_Care_Continuum_.8.aspx)
- Nekhlyudov L., G.B. Campbell, K.H. Schmitz, G.A. Brooks, A.J. Kumar, P.A. Ganz, and D. Von Ah. 2022. Cancer-related impairments and functional limitations among long-term cancer survivors: Gaps and opportunities for clinical practice. *Cancer* 128(2): 222-229. <https://pubmed.ncbi.nlm.nih.gov/34529268/>
- Oyer, R. A., L. Pierce, C. Lathan, and B. Sagar. 2022. Maintaining and advancing quality cancer care during a global pandemic. *Cancer Journal* 28(2):134-137. [https://journals.lww.com/journalppo/Abstract/2022/03000/Maintaining\\_and\\_Advancing\\_Quality\\_Cancer\\_Care.10.aspx](https://journals.lww.com/journalppo/Abstract/2022/03000/Maintaining_and_Advancing_Quality_Cancer_Care.10.aspx)
- Prindiville, S. A., G. A. Sarosy, D. Loose, H. Ciolino, and J. H. Doroshow. 2022. Patterns of enrollment in cancer treatment trials during the covid-19 pandemic at national cancer institute-designated cancer centers. *Cancer Journal* 28(2):111-117. [https://journals.lww.com/journalppo/Abstract/2022/03000/Patterns\\_of\\_Enrollment\\_in\\_Cancer\\_Treatment\\_Trials.6.aspx](https://journals.lww.com/journalppo/Abstract/2022/03000/Patterns_of_Enrollment_in_Cancer_Treatment_Trials.6.aspx)
- Rivera, D. R., P. G. Kluetz, K. Abdallah, S. Agrawal, D. C. Angus, R. M. Califf, E. Garrett-Mayer, R. Hyer, D. R. Lowy, and S. N. Khleif. 2022. Clinical evidence generation during a pandemic: Lessons learned for sustaining progress. *Cancer Journal* 28(2):151-156. [https://journals.lww.com/journalppo/Abstract/2022/03000/Clinical\\_Evidence\\_Generation\\_During\\_a\\_Pandemic\\_.13.aspx](https://journals.lww.com/journalppo/Abstract/2022/03000/Clinical_Evidence_Generation_During_a_Pandemic_.13.aspx)
- Roberts, T. J., and I. T. Lennes. 2022. Lessons for oncology from the covid-19 pandemic: Operationalizing and scaling virtual cancer care in health systems. *Cancer Journal* 28(2):125-133. [https://journals.lww.com/journalppo/Abstract/2022/03000/Lessons\\_for\\_Oncology\\_From\\_the\\_COVID\\_19\\_Pandemic\\_.9.aspx](https://journals.lww.com/journalppo/Abstract/2022/03000/Lessons_for_Oncology_From_the_COVID_19_Pandemic_.9.aspx)



## 2022, continued

---

- Schilsky, R. L. 2022. Beyond the covid-19 pandemic: Sustaining and improving equitable cancer care and research. *Cancer Journal* 28(2):105-106. [https://journals.lww.com/journalppo/Citation/2022/03000/Beyond\\_the\\_COVID\\_19\\_Pandemic\\_\\_Sustaining\\_and.4.aspx](https://journals.lww.com/journalppo/Citation/2022/03000/Beyond_the_COVID_19_Pandemic__Sustaining_and.4.aspx)
- Winkfield, K. M., and R. A. Winn. 2022. Improving equity in cancer care in the face of a public health emergency. *Cancer J* 28(2):138-145. [https://journals.lww.com/journalppo/Abstract/2022/03000/Improving\\_Equity\\_in\\_Cancer\\_Care\\_in\\_the\\_Face\\_of\\_a.11.aspx](https://journals.lww.com/journalppo/Abstract/2022/03000/Improving_Equity_in_Cancer_Care_in_the_Face_of_a.11.aspx)

## 2021

---

- Bertagnolli, M.M. and H. Singh. 2021. Treatment of older adults with cancer - addressing gaps in evidence. *New England Journal of Medicine* 385:1062-1065. <https://www.nejm.org/doi/full/10.1056/NEJMp2106089>
- Housten, A.J., C.M. Gunn, M.K. Paasche-Orlow, and K.M. Basen-Engquist. 2021. Health literacy interventions in cancer: A systematic review. *Journal of Cancer Education* 36(2):240-252. <https://pubmed.ncbi.nlm.nih.gov/33155097/>

## 2020

---

- Schilsky, R.L., S. Nass, M.M. Le Beau, and E.J. Benz, Jr. 2020. Progress in cancer research, prevention, and care. *New England Journal of Medicine* 383(10):897-990. <https://www.nejm.org/doi/full/10.1056/NEJMp2007839>.
- Shulman, L. N., L. K. Sheldon, and E. J. Benz. 2020. The future of cancer care in the United States—Overcoming workforce capacity limitations. *JAMA Oncology* 6(3):327-328. <https://jamanetwork.com/journals/jamaoncology/article-abstract/2758839>.
- Panagiotou, O. A., L. Hoffman-Högg, H. Hricak, S. N. Khleif, M. A. Levy, D. Magnus, M. J. Murphy, B. Patel, R. A. Winn, S. J. Nass, C. Gatsonis, and C. R. Cogle. 2020. Clinical application of computational methods in precision oncology: A review. *JAMA Oncology* 6(8):1282:1286. <https://jamanetwork.com/journals/jamaoncology/article-abstract/2765757>.

## 2019

---

- Balogh, E. P., A. B. Bindman, S. G. Eckhardt, S. Halabi, R. D. Harvey, I. Jaiyesimi, R. Miksad, H. L. Moses, S. J. Nass, R. L. Schilsky, S. Sun, J. M. Torrente, and K. E. Warren. 2019. Challenges and opportunities to updating prescribing information for longstanding oncology drugs. *The Oncologist* 24:1-7. <https://www.ncbi.nlm.nih.gov/pmc/articles/PMC7066705/>.
- Takvorian, S. U., E. Balogh, S. Nass, V. L. Valentin, L. Hoffman-Högg, R. A. Oyer, R. W. Carlson, N. J. Meropol, L. K. Sheldon, and L. N. Shulman. 2019. Developing and sustaining an effective and resilient oncology careforce: Opportunities for action. *Journal of the National Cancer Institute* 112(7):663-670. <https://doi.org/10.1093/jnci/djz239>
- Kline, R. M., G. B. Rocque, E. A. Rohan, K. A. Blackley, C. A. Cantril, M. L. Pratt-Chapman, H. A. Burris, and L.N Shulman. 2019. Patient navigation in cancer: The business case to support clinical needs. *Journal of Oncology Practice* 15(11):585-590. <https://www.ncbi.nlm.nih.gov/pubmed/31509483>.
- Lubejko, B. G., C. Cantril, L. H. Hogg, and L. Kennedy Sheldon. 2019. Novice oncology nurse navigator: Core elements in establishing training needs and building on competencies. *Clinical Journal of Oncology Nursing* 23(4):387-394. <https://www.ncbi.nlm.nih.gov/pubmed/31322621>.
- Nass, S. J., M.B. Cohen, R. Nayar, M.M. Zutter, E. P. Balogh, R. L. Schilsky, H. Hricak, and K.S.J. Elenitoba-Johnson. 2019. Improving cancer diagnosis and care: Patient access to high-quality oncologic pathology. *The Oncologist* 24(10):1287-1290. <https://www.ncbi.nlm.nih.gov/pubmed/31366725>.
- Lopez, D., M. L. Pratt-Chapman, E. A. Rohan, L. K. Sheldon, K. Basen-Engquist, R. Kline, L. N. Shulman, and E. J. Flores. 2019. Establishing effective patient navigation programs in oncology. *Supportive Care in Cancer* 27(6):1985-1996. <https://www.ncbi.nlm.nih.gov/pubmed/30887125>.
- Nass, S. J., C. R. Cogle, J. A. Brink, C. P. Langlotz, E. P. Balogh, A. Muellner, D. Siegal, R. L. Schilsky, and H. Hricak. 2019. Improving cancer diagnosis and care: Patient access to oncologic imaging expertise. *Journal of Clinical Oncology* 37(20):1690-1694. <https://www.ncbi.nlm.nih.gov/pubmed/31050908>.

## 2018

---

- Kline, R. M., N. K. Arora, C. J. Bradley, E. R. Brauer, D. L. Graves, N. Buchanan Lunsford, M. S. McCabe, S. F. Nasso, L. Nekhlyudov, J. H. Rowland, R. M. Schear, and P. A. Ganz. Long-term survivorship care after cancer treatment—summary of a 2017 National Cancer Policy Forum workshop. *Journal of the National Cancer Institute* 110(12):1300-1310. <https://www.ncbi.nlm.nih.gov/pubmed/30496448>.
- Nass, S. J., M. Rothenberg, R. Pentz, H. Hricak, A. Abernethy, K. Anderson, A. W. Gee, R.D. Harvey, S. Piantadosi, M. M. Bertagnolli, D. Schrag, and R. L. Schilsky. Accelerating anticancer drug development—opportunities and trade-offs. *Nature Reviews Clinical Oncology* 15(12):777-786. <https://www.ncbi.nlm.nih.gov/pubmed/30275514>.
- Demark-Wahnefried, W., K. H. Schmitz, C. M. Alfano, J. R. Bail, P. J. Goodwin, C. A. Thomson, D. W. Bradley, K. S. Courneya, C. A. Befort, C. S. Denlinger, J. A. Ligibel, W. H. Dietz, M. R. Stolley, M. L. Irwin, M. M. Bamman, C. M. Apovian, B. M. Pinto, K. Y. Wolin, R. M. Ballard, A. J. Dannenberg, E. G. Eakin, M. M. Longjohn, S. D. Raffa, L. L. Adams-Campbell, J. S. Buzaglo, S. J. Nass, G. M. Massetti, E. P. Balogh, E. S. Kraft, A. K. Parekh, D. M. Sanghavi, G. S. Morris, and K. Basen-Engquist. 2018. Weight management and physical activity throughout the cancer care continuum. *CA: A Cancer Journal for Clinicians* 68(1):64-89. <https://www.ncbi.nlm.nih.gov/pubmed/29165798>.

## 2017

---

- Basen-Engquist, K., C. M. Alfano, M. Maitin-Shepard, C. A. Thomson, K. H. Schmitz, B. M. Pinto, K. Stein, D. S. Zucker, K. L. Syrjala, E. Fallon, C. Doyle, and W. Demark-Wahnefried. 2017. Agenda for translating physical activity, nutrition, and weight management interventions for cancer survivors into clinical and community practice. *Obesity (Silver Spring)* 25(Suppl 2):S9-S22. <https://www.ncbi.nlm.nih.gov/pubmed/29086526>.
- Smith, G. L., P. A. Ganz, J. E. Bekelman, S. J. Chmura, J. J. Dignam, J. A. Efstathiou, R. Jagsi, P. A. Johnstone, M. L. Steinberg, S. B. Williams, J. B. Yu, A. L. Zietman, R. R. Weichselbaum, and Y.-C. Shih. 2017. Promoting the appropriate use of advanced radiation technologies in oncology: Summary of a National Cancer Policy Forum workshop. *International Journal of Radiation Oncology • Biology • Physics* 97(3):450-461. <https://www.ncbi.nlm.nih.gov/pubmed/28011046>.

## 2016

- Kirch, R., G. Reaman, C. Feudtner, L. Wiener, L. A. Schwartz, L. Sung, and J. Wolfe. 2016. Advancing a comprehensive cancer care agenda for children and their families: Institute of Medicine workshop highlights and next steps. *CA: A Cancer Journal for Clinicians* 66(5):398-407. <https://www.ncbi.nlm.nih.gov/pubmed/27145249>.

## 2015

- Nass, S. J., L. K. Beupin, W. Demark-Wahnefried, K. Fasciano, P. A. Ganz, B. Hayes-Lattin, M. M. Hudson, B. Nevidjon, K. C. Oeffinger, R. Rechis, L. C. Richardson, N. L. Seibel, and A. W. Smith. 2015. Identifying and addressing the needs of adolescents and young adults with cancer: Summary of an Institute of Medicine workshop. *Oncologist* 20(2):186-195. <https://www.ncbi.nlm.nih.gov/pubmed/25568146>.

## 2014

- Bertagnolli, M. M., R. Canetta, and S. J. Nass. 2014. Expanding public-private collaborations to enhance cancer drug development: A Report of the Institute of Medicine's workshop series, "Implementing a National Cancer Clinical Trials System for the 21st Century." *Oncologist* 19(11):1179-1185. <https://www.ncbi.nlm.nih.gov/pubmed/25326161>.
- Balogh, E. P., C. Dresler, M. E. Fleury, E. R. Gritz, T. J. Kean, M. L. Myers, S. J. Nass, B. Nevidjon, B. A. Toll, G. W. Warren, and R. S. Herbst. 2014. Reducing tobacco-related cancer incidence and mortality: Summary of an Institute of Medicine workshop. *Oncologist* 19(1):21-31. <https://www.ncbi.nlm.nih.gov/pubmed/24304712>.
- Ferrell, B. R., T. J. Smith, L. Levit, and E. Balogh. 2014. Improving the quality of cancer care: Implications for palliative care. *Journal of Palliative Medicine* 17(4):393-399. <https://www.ncbi.nlm.nih.gov/pubmed/24548217>.

## 2013

- Ramsey, S. D., P. A. Ganz, V. Shankaran, J. Peppercorn, and E. Emanuel. 2013. Addressing the American health-care cost crisis: Role of the oncology community. *Journal of the National Cancer Institute* 105(23):1777-1781. <https://www.ncbi.nlm.nih.gov/pubmed/24226096>.
- Balogh, E. P., P. B. Bach, P. D. Eisenberg, P. A. Ganz, R. J. Green, J. C. Gruman, S. J. Nass, L. N. Newcomer, S. D. Ramsey, J. E. Schottinger, and Y. T. Shih. 2013. Practice-changing strategies to deliver affordable, high-quality cancer care: Summary of an Institute of Medicine workshop. *Journal of Oncology Practice* 9(6s):54s-59s. <https://www.ncbi.nlm.nih.gov/pubmed/29431037>.

## 2012

- Demark-Wahnefried, W., E. A. Platz, J. A. Ligibel, C. K. Blair, K. S. Courneya, J. A. Meyerhardt, P. A. Ganz, C. L. Rock, K. H. Schmitz, T. Wadden, E. J. Philip, B. Wolfe, S. M. Gapstur, R. Ballard-Barbash, A. McTiernan, L. Minasian, L. Nebeling, and P. J. Goodwin. 2012. The role of obesity in cancer survival and recurrence. *Cancer Epidemiology, Biomarkers & Prevention* 21(8):1244-1259. <https://www.ncbi.nlm.nih.gov/pubmed/22695735>.
- LoRusso, P. M., R. Canetta, J. A. Wagner, E. P. Balogh, S. J. Nass, S. A. Boerner, and J. Hohnaker. 2012. Accelerating cancer therapy development: The importance of combination strategies and collaboration. Summary of an Institute of Medicine workshop. *Clinical Cancer Research* 18(22):6101-6109. <https://www.ncbi.nlm.nih.gov/pubmed/23065428>.

## 2011

- Nass, S. J., E. Balogh, and J. Mendelsohn. 2011. A national cancer clinical trials network: Recommendations from the Institute of Medicine. *American Journal of Therapeutics* 18(5):382-391. <https://www.ncbi.nlm.nih.gov/pubmed/21326081>.
- Balogh, E. P., P. A. Ganz, S. B. Murphy, S. J. Nass, B. R. Ferrell, and E. Stovall. 2011. Patient-centered cancer treatment planning: Improving the quality of oncology care. Summary of an Institute of Medicine workshop. *Oncologist* 16(12):1800-1805. <https://www.ncbi.nlm.nih.gov/pubmed/22128118>.

## 2010

- Altshuler, J. S., E. Balogh, A. D. Barker, S. L. Eck, S. H. Friend, G. S. Ginsburg, R. S. Herbst, S. J. Nass, C. M. Streecher, and J. A. Wagner. 2010. Opening up to precompetitive collaboration. *Science Translational Medicine* 2(52):52cm26. <https://www.ncbi.nlm.nih.gov/pubmed/20926831>.
- Levit, L., A.P. Smith, E.J. Benz, Jr., and B. Ferrell. 2010. Ensuring Quality Cancer Care Through the Oncology Workforce. 2010. *Journal of Oncology Practice* 6(1):7-11. <https://ascopubs.org/doi/abs/10.1200/JOP.091067>

**NATIONAL  
ACADEMIES** Sciences  
Engineering  
Medicine

The National Academies provide independent, trustworthy advice that advances solutions to society's most complex challenges.

[www.nationalacademies.org](http://www.nationalacademies.org)

# Addressing Resistance in the Development of Cancer Immune Modulator Therapeutics: A Workshop

November 14-15, 2022

Lecture Room  
National Academies of Sciences  
2101 Constitution Ave, NW  
Washington, DC 20418

## Collaborative National Academies Workshop

National Cancer Policy Forum  
Forum on Drug Discovery, Development, and Translation

### Statement of Task:

A National Academies of Sciences, Engineering, and Medicine planning committee will plan and host a 1.5-day public workshop that will examine the current challenges related to resistance to immune modulator therapies and discuss potential policy levers that could help to overcome these challenges. The workshop will feature invited presentations and panel discussions on topics that may include:

- An overview of the unique types of immunotherapy resistance based on the causes of resistance, including whether resistance mechanisms vary among different agents, and gaps in current understanding.
- Policy challenges and opportunities to address the problem of resistance, including:
  - Criteria to move single agents into clinical trials.
  - Criteria to use single agents in combination therapy development (e.g., whether clinical response is necessary).
  - Criteria to assess cancer immunotherapy combinations in early-phase clinical trials.
  - The roles of preclinical modeling and clinical and predictive biomarkers (e.g., companion diagnostics, in vivo imaging) for assessing safety and efficacy.
  - The types of clinical trial designs needed for regulatory approval.
  - Use of big data to aid in determining the dominant drivers of cancer immunotherapy resistance and to predict immunotherapy responses.

The planning committee will develop the agenda for the workshop sessions, select and invite speakers and discussants, and moderate the discussions. A proceedings of the presentations and discussions at the workshop will be prepared by a designated rapporteur in accordance with institutional guidelines.

### Provisional Planning Committee

Samir N. Khleif, MD, Georgetown University Medical Center (Co-Chair)

George J. Weiner, MD, The University of Iowa Holden Comprehensive Cancer Center (Co-Chair)

Gideon Blumenthal, MD, Merck

Chris Boshoff MD, PhD, FMedSci, Pfizer Inc.

Tom Curran, PhD, FRS, Children's Mercy, Kansas City

Nancy E. Davidson, MD, Seattle Cancer Care Alliance and Fred Hutchinson Cancer Center

Julie R. Gralow, MD, FACP, FASCO, American Society of Clinical Oncology

Roy S. Herbst, MD, PhD, Yale Comprehensive Cancer Center

Hedvig Hricak, MD, PhD, Memorial Sloan Kettering Cancer Center

Scott M. Lippman, MD, University of California, San Diego Moores Cancer Center

Kimryn Rathmell, MD, PhD, Vanderbilt University Medical Center

Marc Theoret, MD, Food and Drug Administration



# Incorporating Integrated Diagnostics into Precision Oncology Care: A Workshop

March 6-7, 2023

Keck Center Room 100  
500 Fifth Street, NW  
Washington, DC 20001

## Collaborative National Academies Workshop

National Cancer Policy Forum  
Computer Science and Telecommunications Board  
Board on Human-Systems Integration

### Workshop Purpose

Recent innovations in the diagnostic specialties (radiology, pathology, and laboratory medicine) have the potential to dramatically reshape cancer diagnosis and enable precision therapy. Spurred by advances in informatics, there are increasing opportunities to combine and collate information from imaging, pathology, and molecular testing. Multidisciplinary collaboration among pathologists, radiologists, and oncologists--supplemented by machine-learning based tools--could facilitate a more precise understanding of a patient's cancer diagnosis, and what treatment strategies may be most effective for improved patient outcomes. Integrated diagnostics also have the potential to improve patient access to subspecialty expertise, particularly in community-based settings of cancer care.

However, despite the promise of integrated diagnostics for improving cancer diagnosis and care, there is no uniform strategy for its development, implementation, and use. Institutions are moving ahead independently and creating a patchwork of approaches in the process. A National Academies workshop could help the cancer community better define the purpose, goals, and components of integrated diagnostics for cancer and examine criteria to determine the effectiveness of this approach. Workshop presentations and discussions could provide an opportunity for experts to discuss the policy, research, technical, and workforce considerations that are necessary to help realize the potential of integrated diagnostics.

### Statement of Task

A planning committee of the National Academies of Sciences, Engineering, and Medicine will plan and host a 1.5-day public workshop that will examine the state of the science and the vision for integrated diagnostics in precision oncology care. The workshop will feature invited presentations and panel discussions on topics that may include:

- Current efforts to develop and implement integrated diagnostics to inform treatment decision making in cancer care.
- Implications of integrated diagnostics for clinician training, care workflows, and organization of care teams.
- Opportunities for evidence generation to inform validation, clinical utility, oversight, as well as coverage and reimbursement for integrated diagnostics.
- Strategies for ongoing quality assurance, evaluation, and refinement of integrated cancer diagnostics based on new evidence.
- Mechanisms to enable broad patient access to integrated diagnostics, particularly in community-based settings of cancer care.

The planning committee will develop the agenda for the workshop sessions, select and invite speakers and discussants, and moderate the discussions. A proceedings of the presentations and discussions at the workshop will be prepared by a designated rapporteur in accordance with institutional guidelines.

### Planning Committee Pending