

Grounding psychiatry in brain-based biomarkers

Amit Etkin, MD PhD

CEO

Alto Neuroscience, Inc.

Professor

Stanford University



From one-size-fits all to precision psychiatry

2008:

Prozac, used by 40m people, does not work say scientists

Analysis of unseen trials and other data concludes it is no better than placebo
Full text: the PLoS paper



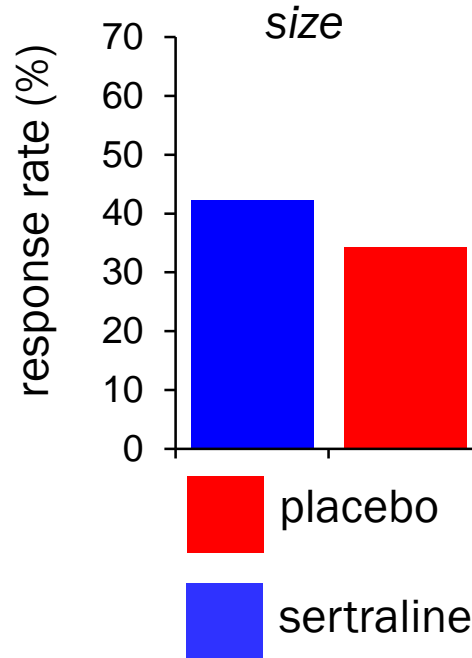
2018:

The drugs do work: antidepressants are effective, study shows

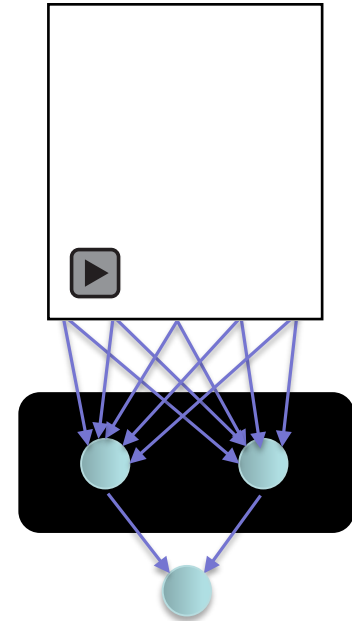
Doctors hope study will put to rest doubts about the medicine, and help to address global under-treatment of depression
It's official: antidepressants are not snake oil or a conspiracy



EMBARC study
all patients:
small effect



Electroencephalography
(EEG)

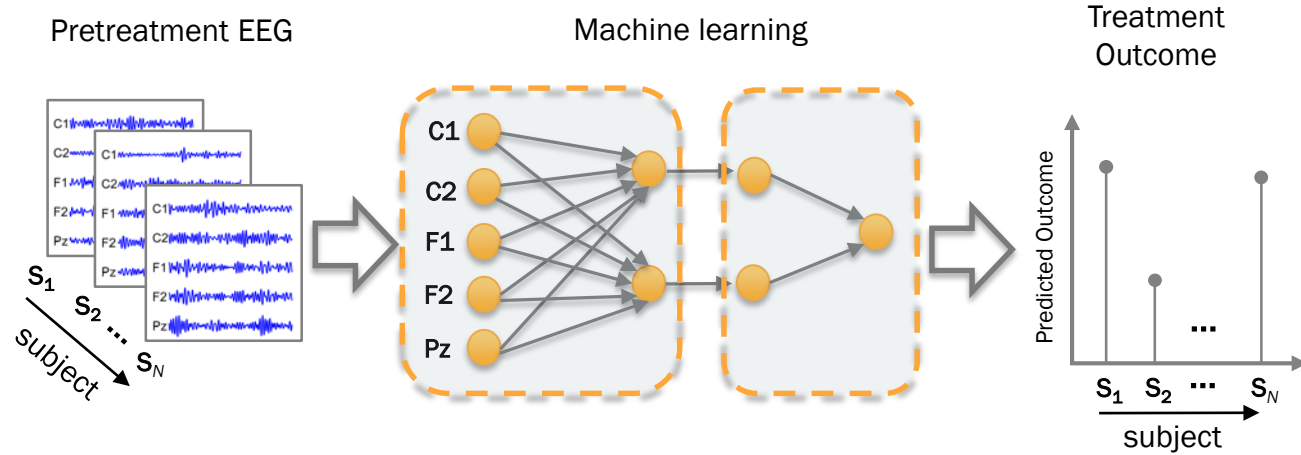


machine learning

Two general approaches at machine learning

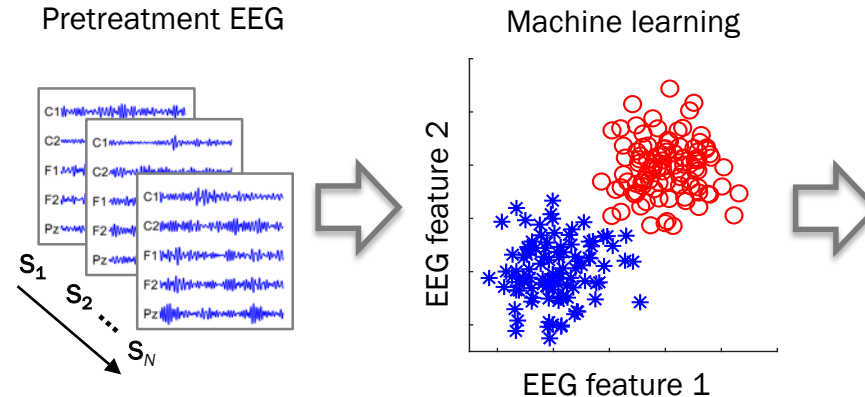
Supervised:

- Known clinical targets
- Heterogeneity in treatment outcomes



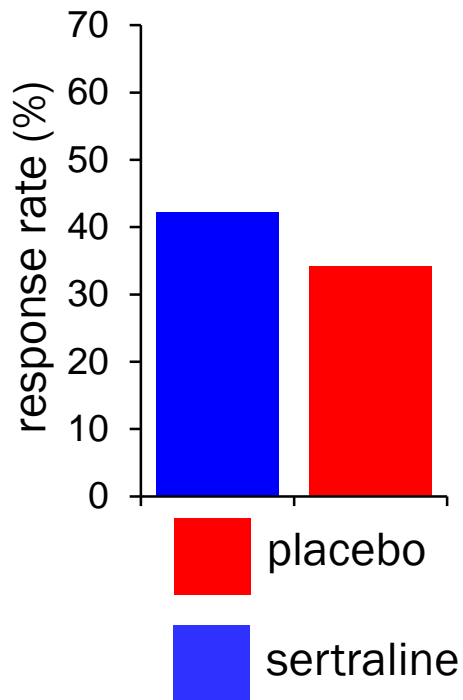
Unsupervised:

- Heterogeneity in biology itself
- Challenge is aligning with clinical targets



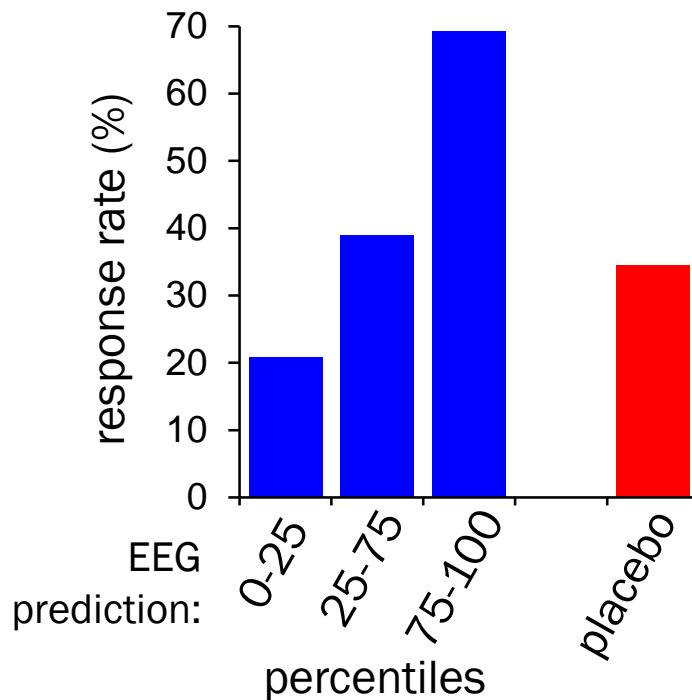
Supervised prediction of treatment outcome

all comers

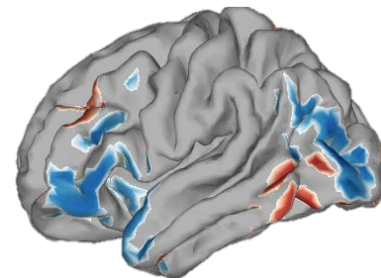


Fonzo, Nature Hum. Behav, 2019

*split based on
sertraline EEG signature*



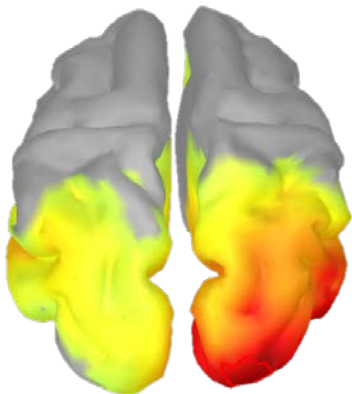
Wu, Nature Biotechnology, 2020



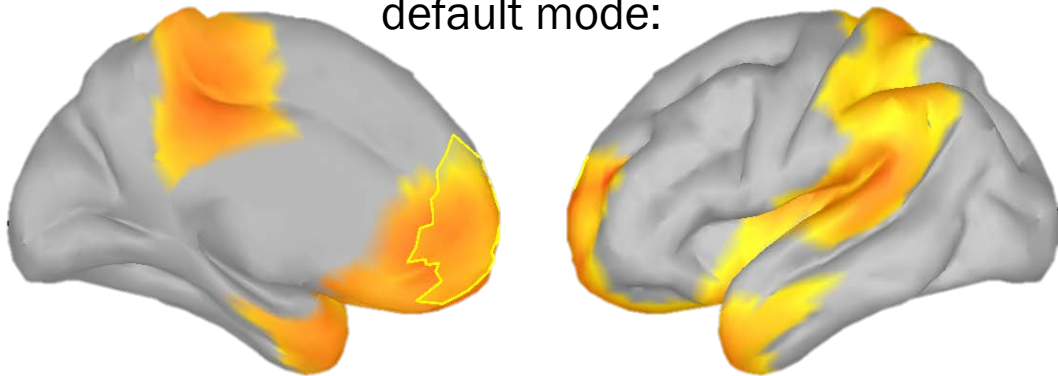
- Independent of depression severity
- Works across EEG systems and sites

Brain connectivity networks visualized with EEG

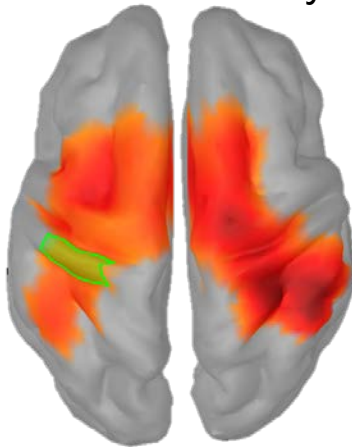
visual:



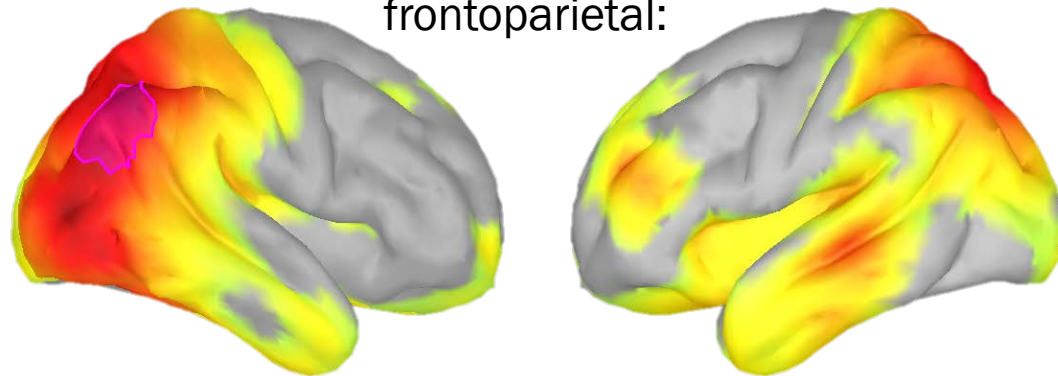
default mode:



somatosensory:

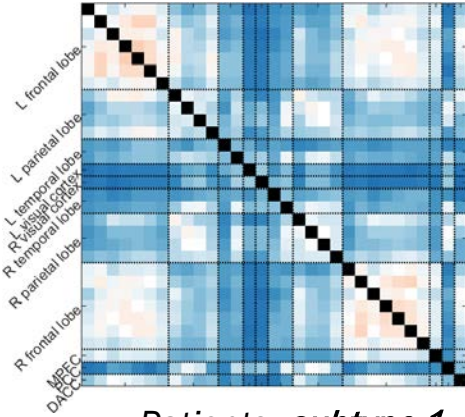


frontoparietal:

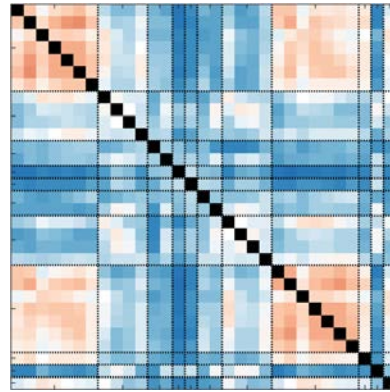


Unsupervised subtyping using only EEG

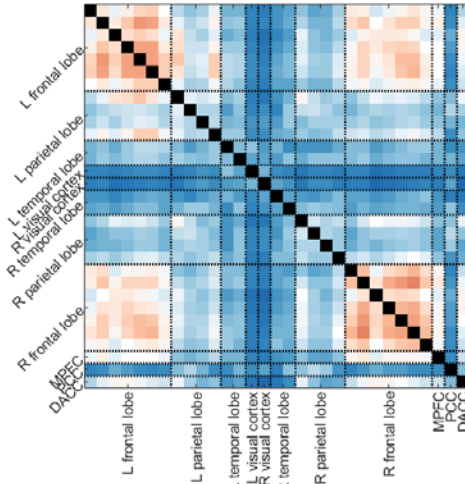
All patients



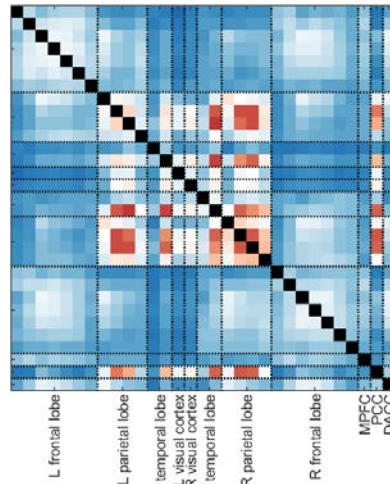
Healthy participants



Patients: *subtype 1*

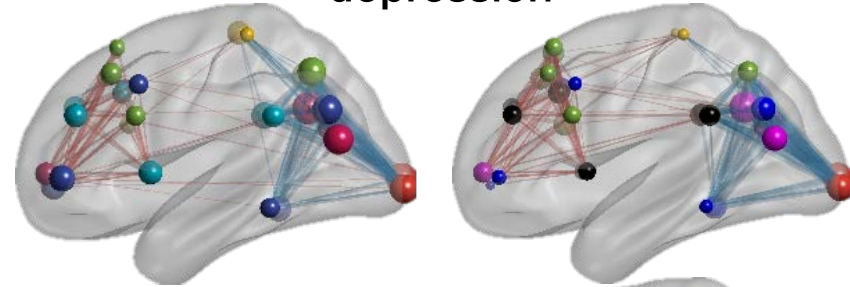


Patients: *subtype 2*

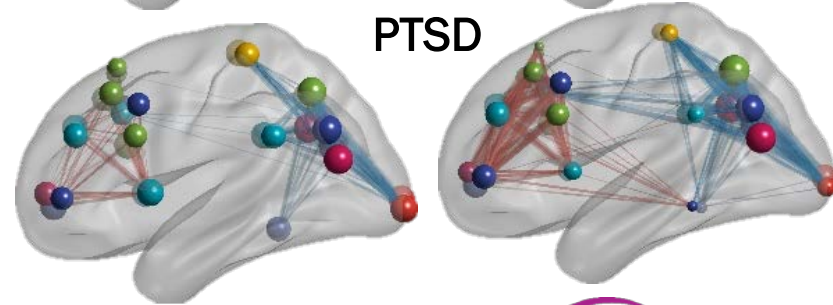


EEG subtypes identified at 90% accuracy across **four** cohorts, representing **two** disorders and **multiple** EEG systems

depression



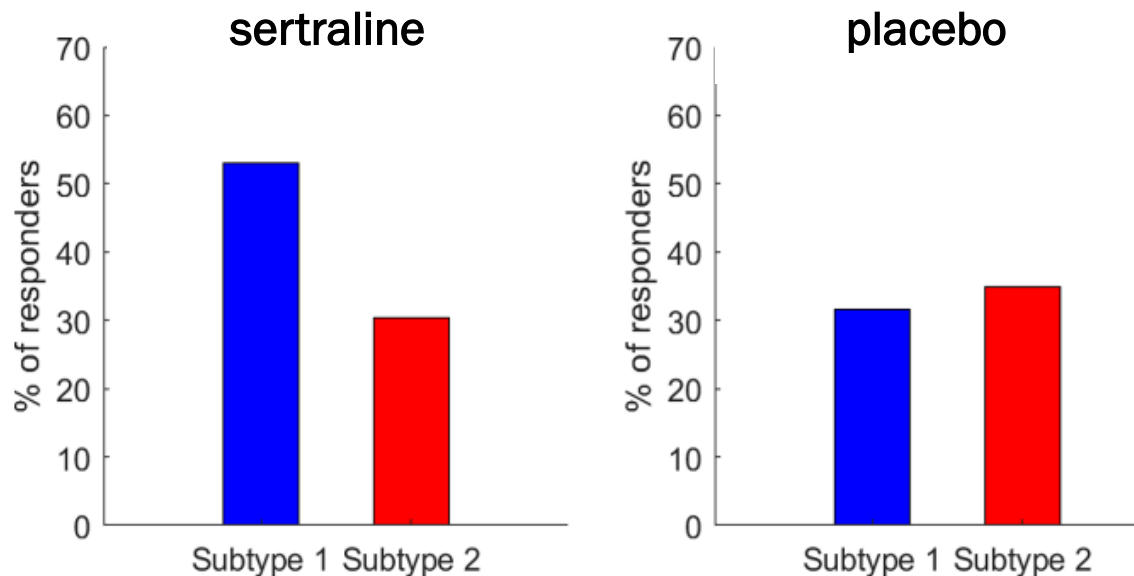
PTSD



Zhang, Nature Biomed. Eng.,
prov. acceptance

Clinical significance of EEG subtypes

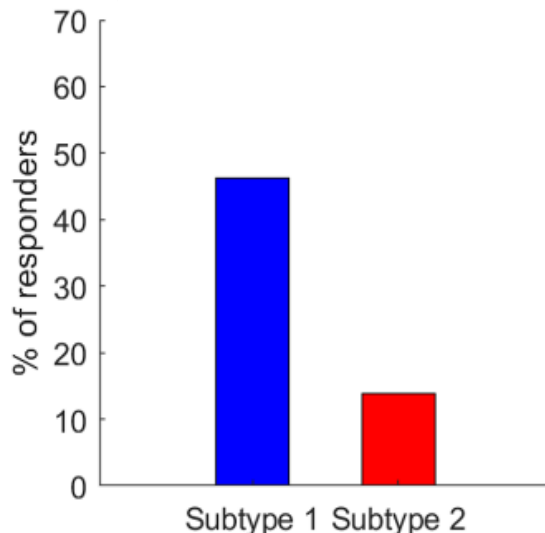
Do the subtypes respond differentially to antidepressant treatment (EMBARC)?



Clinical significance of EEG subtypes

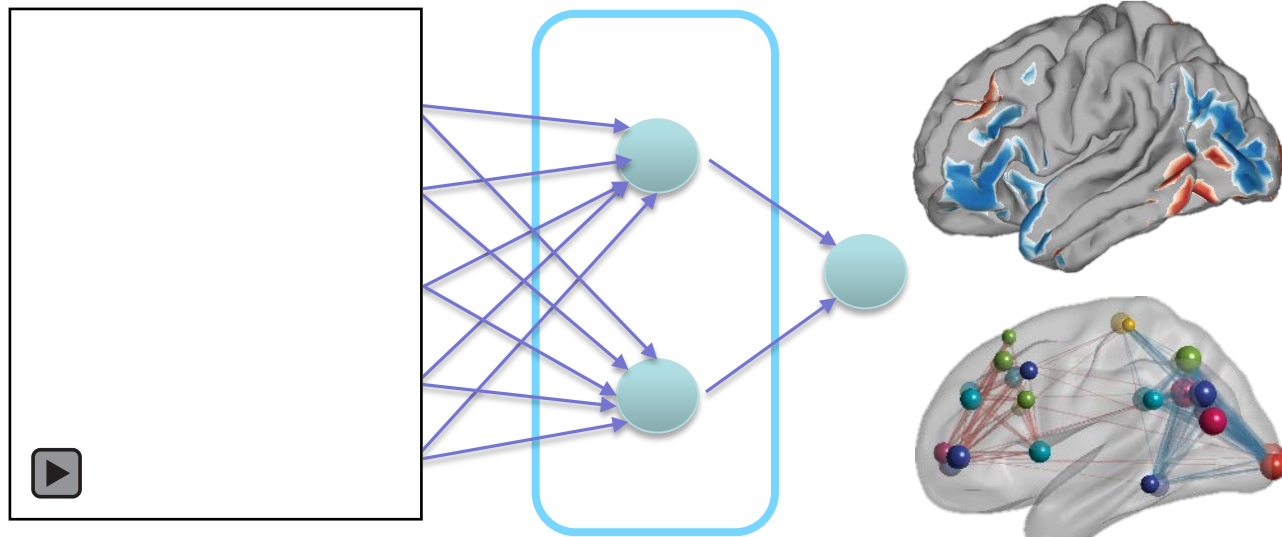
Do the subtypes respond differentially to psychotherapy?

- One PTSD cohort was veterans getting therapy in VA



- Independent of type of therapy

Grounding psychiatry in brain-based biomarkers



customized
machine learning

brain
signatures



clinical
course/decisions

- Insights not possible from clinical measures
- Effective in cutting through heterogeneity
- Near-term clinical-translatable tool/test