

Palliative Care in Solid Organ Transplantation

Kirsten Wentlandt PhD MHSci MD FCFP (PC) FRCPC
Associate Professor, University of Toronto

National Academies of Science Engineering and Medicine Workshop
March 22 - 23, 2021



UNIVERSITY OF
TORONTO





AIM

Define Palliative
Care

Review outcomes
associated with
Palliative Care
Integration

Discuss why Palliative
Care is important in
Transplant

Palliative Care



**World Health
Organization**

The World Health Organization

“An approach that improves quality of life of patients and their families facing the problem associated with life-threatening illness, through the prevention and relief of suffering by means of early identification and impeccable assessment and treatment of pain and other problems, physical, psychological and spiritual.”



World Health
Organization

Palliative Care Definition

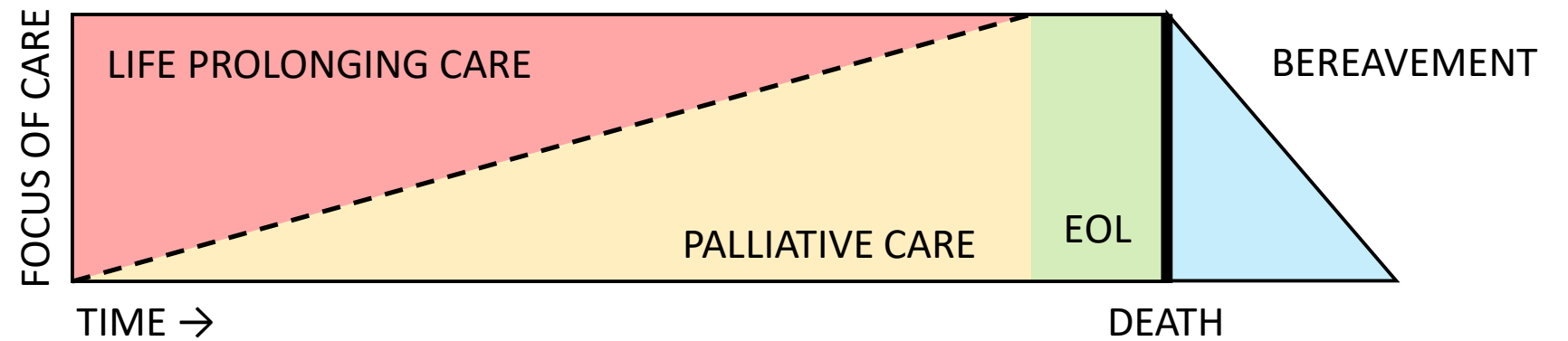
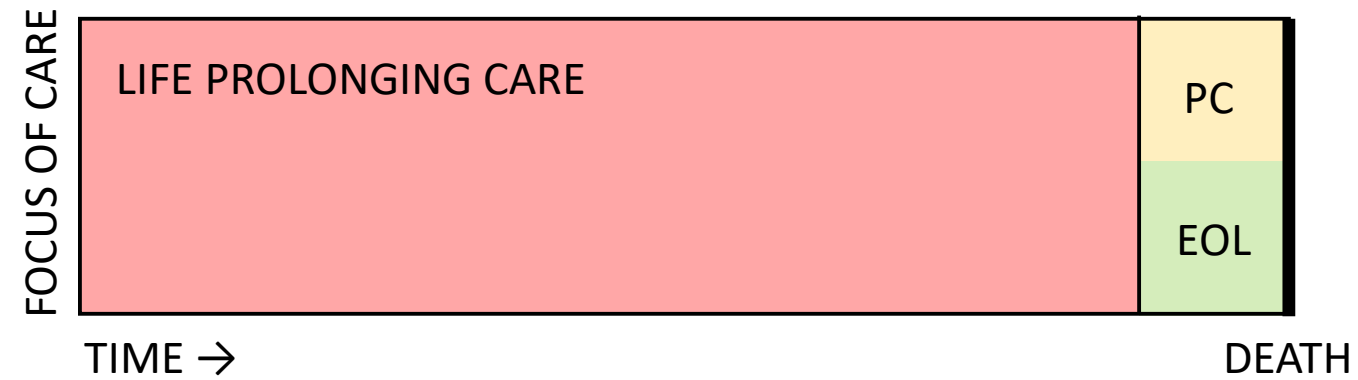
An approach that improves the quality of life of patients and their families facing the problems associated with illness

intends ***neither to hasten or postpone*** death

integrates the ***psychological and spiritual*** aspects of patient care

applicable ***early in the course of illness***, in conjunction with other therapies that are intended to prolong life

Palliative Care



Elements of Palliative Care

Optimal Symptom Management

Support of Family

Advance Care Planning

Care-Coordination

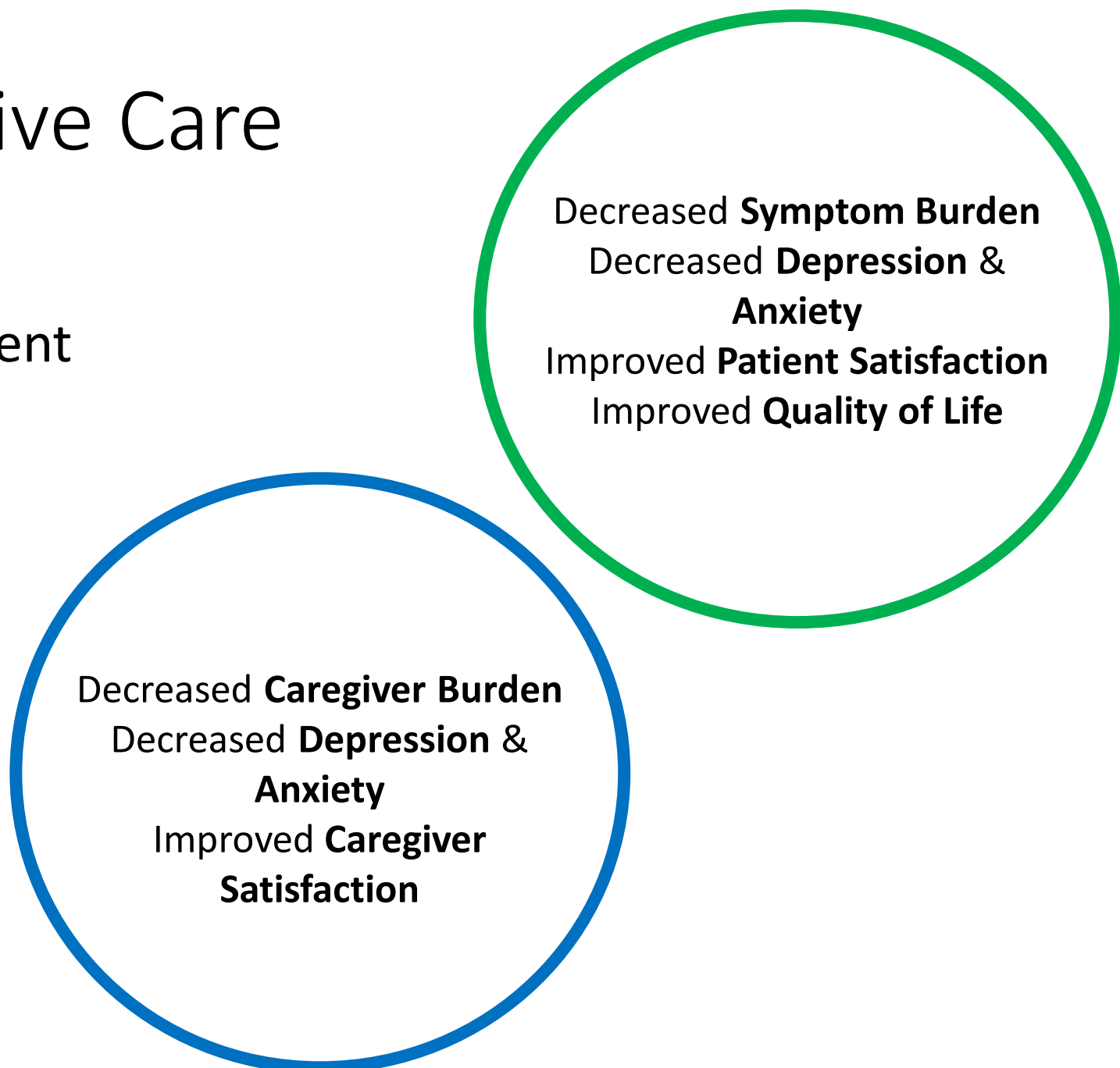
Elements of Palliative Care

Optimal Symptom Management

Support of Family

Advance Care Planning

Care-Coordination



Decreased **Symptom Burden**
Decreased **Depression & Anxiety**
Improved **Patient Satisfaction**
Improved **Quality of Life**

Decreased **Caregiver Burden**
Decreased **Depression & Anxiety**
Improved **Caregiver Satisfaction**

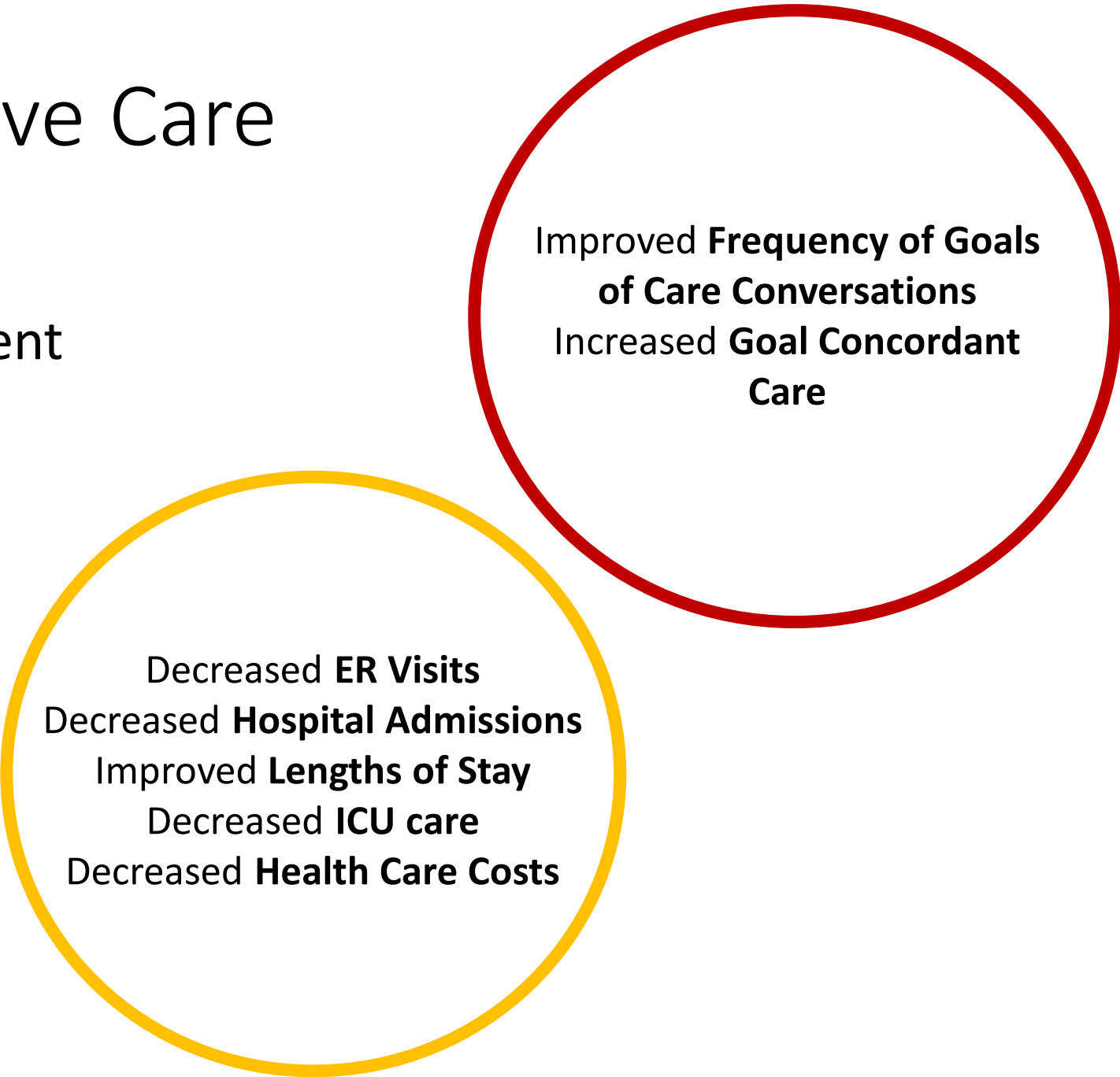
Elements of Palliative Care

Optimal Symptom Management

Support of Family

Advance Care Planning

Care-Coordination



Improved **Frequency of Goals
of Care Conversations**
Increased **Goal Concordant
Care**

Decreased **ER Visits**
Decreased **Hospital Admissions**
Improved **Lengths of Stay**
Decreased **ICU care**
Decreased **Health Care Costs**



SPC referral
rates for organ
failure are
LOW

Symptom Burden
of patients with
Organ Failure



Patients
with
Cancer

Organ failure
makes up only **6-8%**
of referrals for hospitalized
American patients to
palliative care.

Patients with organ
failure make up
5-25%
of all hospice deaths

Most patients
with organ failure
are referred only
days
before death

Palliative Care in Transplantation

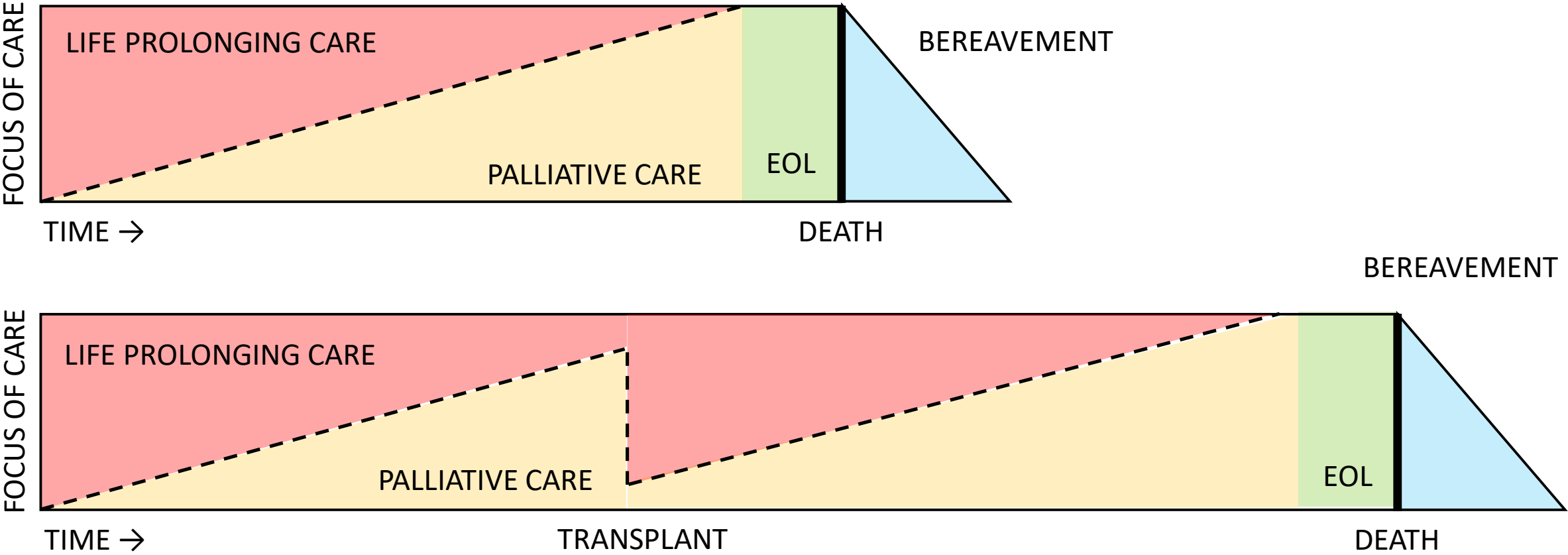
Decreased **Symptom Burden**
Decreased **Depression & Anxiety**
Improved **Patient Satisfaction**
Improved **Quality of Life**

Improved **Frequency of Goals of Care Conversations**
Increased **Goal Concordant Care**

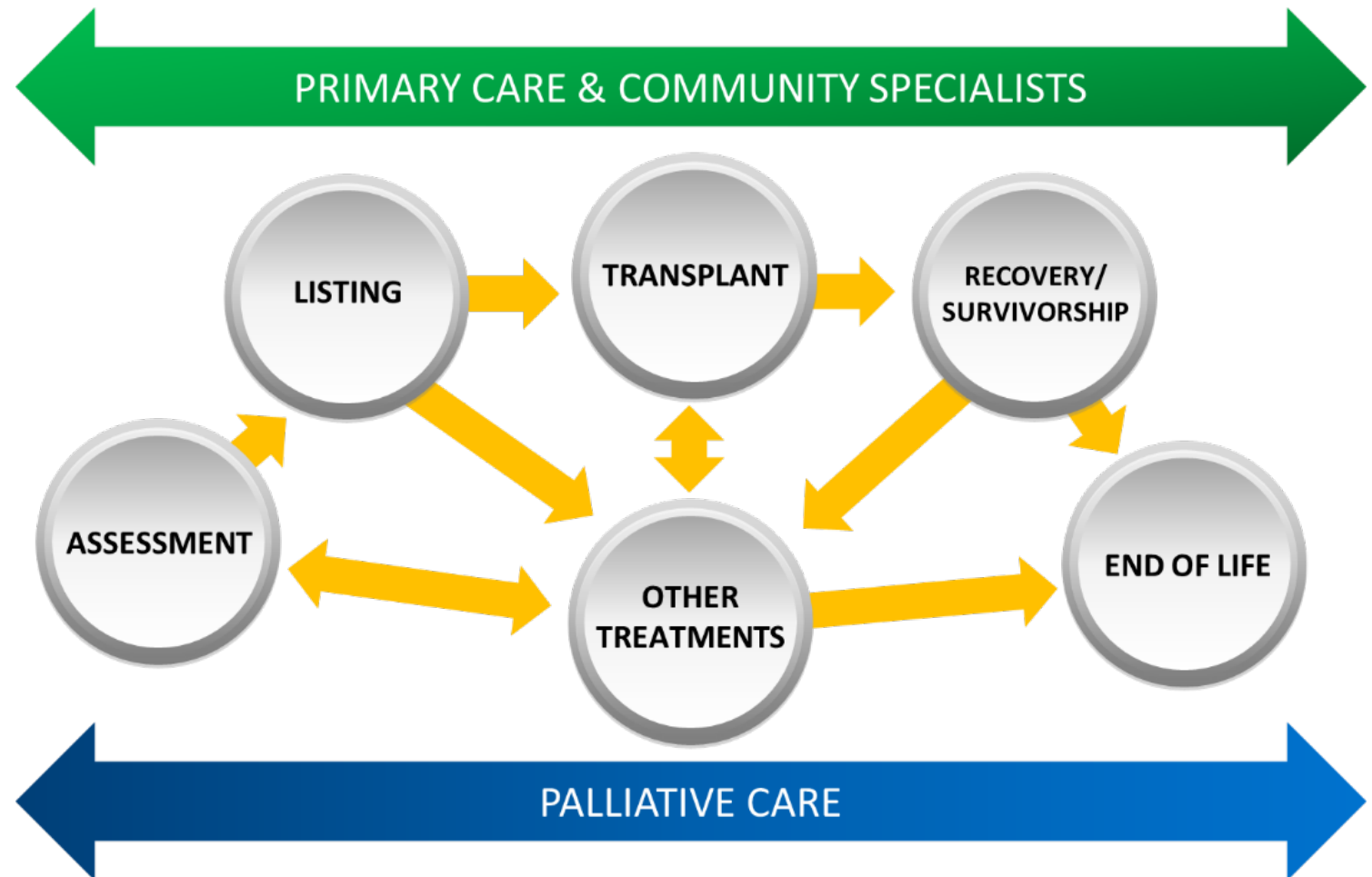
Decreased **Caregiver Burden**
Decreased **Depression & Anxiety**
Improved **Caregiver Satisfaction**

Decreased **ER Visits**
Decreased **Hospital Admissions**
Improved **Lengths of Stay**
Decreased **ICU care**
Decreased **Health Care Costs**

Palliative Care



Palliative Care in Transplant



Importance of Palliative Care Integration

Transplant populations

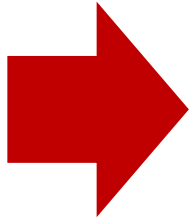
Advanced disease

Significant Symptom Burden

Focus on aggressive medical management

High mortality

Importance of Palliative Care Integration



Patients exposed to transplant

Increased ICU admissions

More aggressive interventions at EOL

Likely to die in hospital

Poor hospice enrollment

Transplant populations

Advanced disease

Significant Symptom Burden

Focus on aggressive medical management

High mortality



AIM

Define Palliative
Care

Review outcomes
associated with
Palliative Care
Integration

Discuss why Palliative
Care is important in
Transplant

References

Palliative and end of life care in solid organ transplantation.
Am J Transplant 2017

End of Life care among US Adults with ESKD in the US who were
waitlisted or received a kidney transplant, 2005-2014.
JASN 2020

State of the Science of Palliative Care in Solid Organ Transplantation
Prog Transplant 2020

Impact of home-based palliative care on health care costs and
hospital use: A systematic review.
Palliat Support Care 2020

The effectiveness and cost-effectiveness of hospital-based specialist
palliative care for adults with advanced illness and their caregivers.
Cochrane Database Syst Rev 2020

Palliative Care in Solid Organ Transplantation

Kirsten Wentlandt PhD MHSci MD FCFP (PC) FRCPC
Associate Professor, University of Toronto

National Academies of Science Engineering and Medicine Workshop
March 22 - 23, 2021



UNIVERSITY OF
TORONTO

