

988, Health Equity, and The African American Community

Brandon J. Johnson, M.H.S., MCHES

Public Health Advisor

Substance Abuse and Mental Health Services Administration

U.S. Department of Health and Human Services

Rockville, MD



SAMHSA
Substance Abuse and Mental Health
Services Administration

Trends in African-American Youth Suicide

The Washington Post
Democracy Dies in Darkness

Health

Suicide rates for black children twice that of white children, new data show



KAISER PERMANENTE.

Make health care a
**business
asset**

SEE HOW »

Washington Post content selected by Kaiser Permanente



1 Why Medicare-for-all isn't enough



2 Fitness trackers are good for your health, but that 10,000-step goal is overblown



3 Many older adults feel positive about their health. Here's why.

New "Star Wars" Trailer | Dallas Tornado | College Admissions Scandal | Zion Williamson Injury | Avicii's Father Discusses Suicide

CBS
NEWS

NEWS ▾

STOP THE STIGMA ▾

SHOWS ▾

LIVE ▾



Suicide attempts among black children and teens increasing at alarming rates, study finds

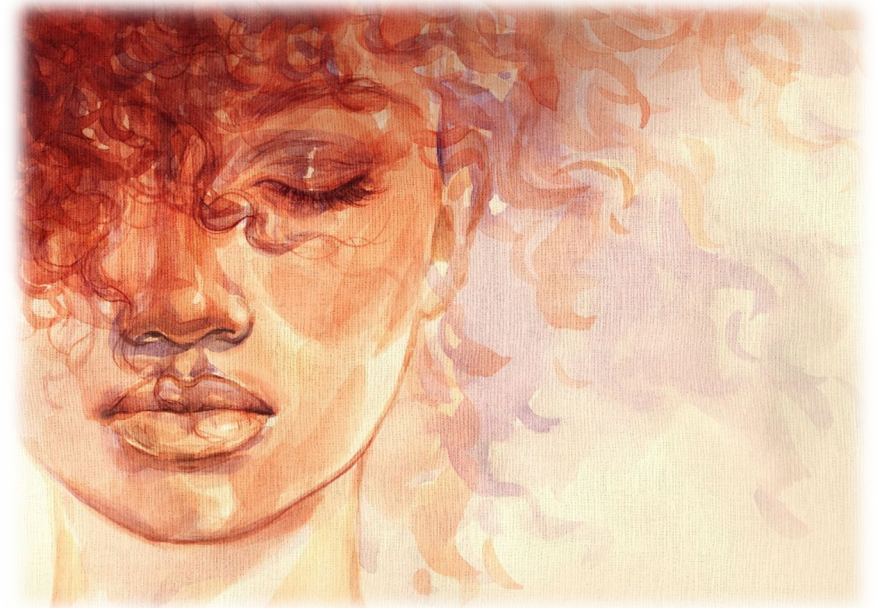
BY AYANNA RUNCIE

OCTOBER 14, 2019 / 12:23 PM / CBS NEWS



Health Equity with 988

- 988 could increase access to mobile crisis teams for Black families
- African Americans who engage with law enforcement are more likely to be killed in that interaction than other racial/ethnic groups. Having mobile crisis teams dispatched instead, might save lives.
- Local crisis centers often have information on local mental health resources and community supports. Connecting Black and brown families with culturally appropriate resource increases the likelihood for engagement and impact.



Faith Communities Task Force

The Faith Communities Task Force leads Action Alliance efforts to engage faith communities in suicide prevention.

Brandon J. Johnson, M.H.S. — Co-Lead, Public Sector, Public Health Advisor, Center for Mental Health Services, Substance Abuse and Mental Health Services Administration

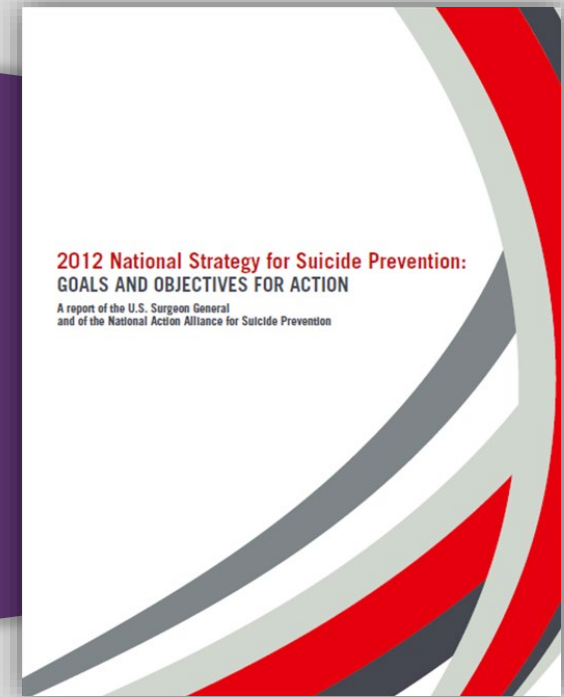
Melinda Moore, PhD — Co-Lead, Private Sector, Assistant Professor, Department of Psychology, Eastern Kentucky University

Why We Focus on Faith Communities

GOAL 1: Integrate and coordinate suicide prevention activities across multiple sectors and settings.

GOAL 3: Increase knowledge of the factors that offer protection from suicidal behaviors and that promote wellness and recovery.

GOAL 10: Provide care and support to individuals affected by suicide deaths and attempts to promote healing and implement community strategies to help prevent further suicides.



Strategies to Engage Faith Leaders

- Sharing the importance of 988 with faith leaders
- Creating materials for faith communities to disseminate regarding the switch to 988
- Engage in dialogues with faith leaders to ensure the message of healing and help-seeking

