

A photograph of two men in a kitchen. The man on the left is wearing an orange polo shirt, glasses, and a blue baseball cap. The man on the right is wearing a plaid shirt. They are both looking down at a document or map on a counter. In the background, there is a kitchen counter with a Siemens microwave, a coffee maker, and various kitchen items. The lighting is warm and focused on the men.

Health

POWERED BY COMMUNITY

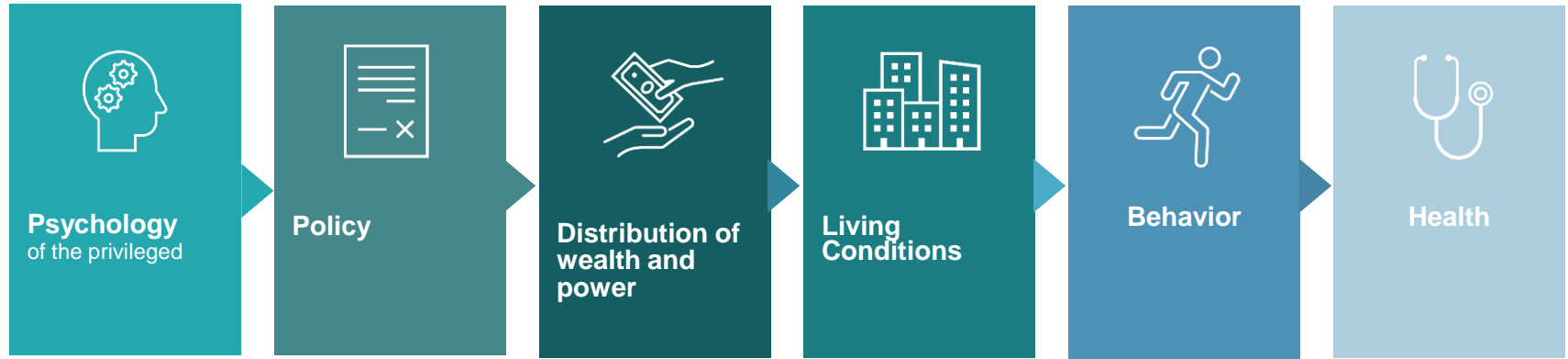
Acknowledgements.

Key Collaborators: Judith A. Long, MD; David Grande, MD, MPA; David Asch, MD, MBA; Nandita Mitra, PhD; Joan Doyle, RN, MSN, MBA; Tamala Carter, CHW; Jill Feldstein, MPA; Molly Knowles, MPH; Jovan Bennett, MSW; Olenga Anabui MPH, MBA

Funding: Patient-Centered Outcomes Research Institute (PCORI-1310-07292); National Heart, Lung, and Blood Institute(K23-HL128837); Commonwealth Fund

Conflicts of interest: None

Health inequity is a psychological condition with downstream effects.



Community health workers are the workforce of health equity.

- Definition: A community health worker is a frontline public health worker who is a trustworthy member of and/or has an unusually close understanding of the community served. (APHA)

Roles: (C3)

- - Social and emotional support
 - Navigation and care coordination
 - Cultural mediation
 - Coaching
 - Advocacy
 - Outreach

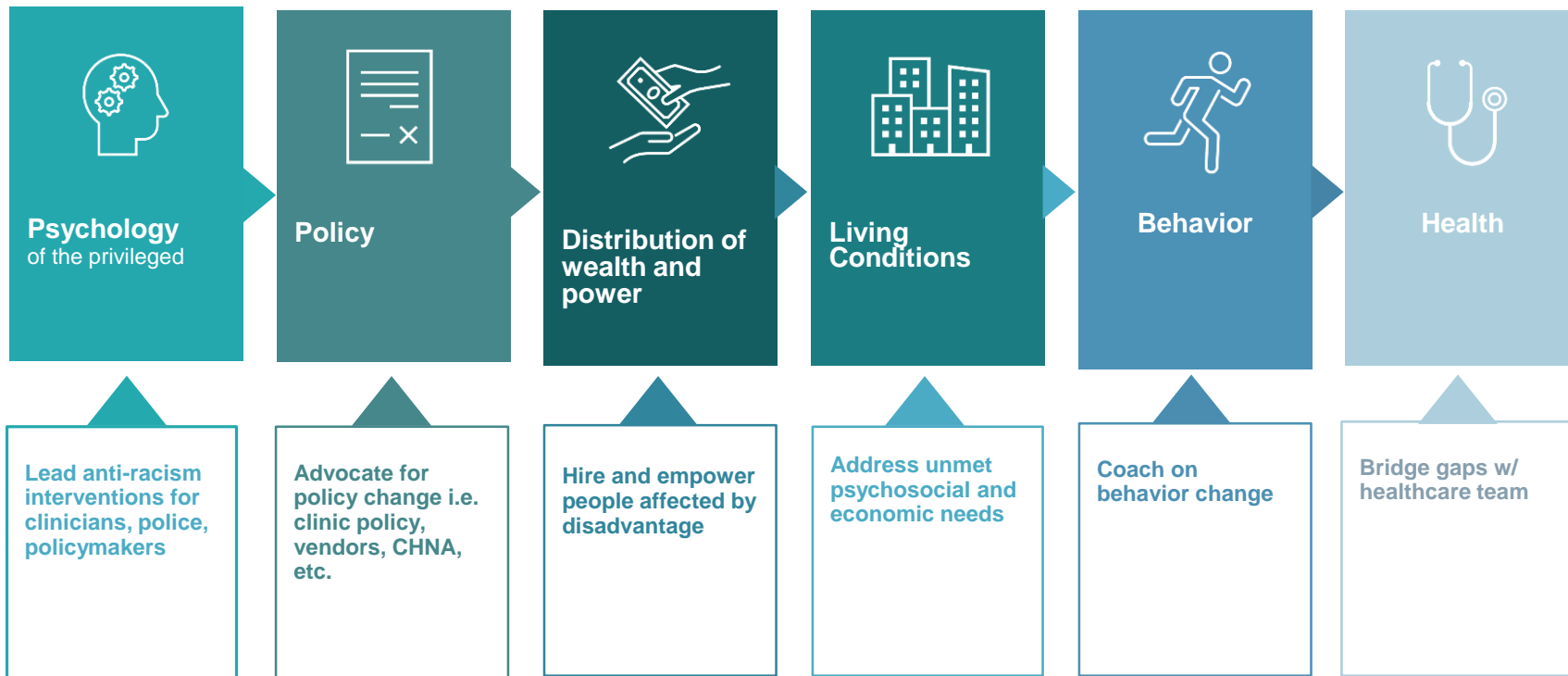
Scan

- - 86,000 CHWs in US
 - CBOs>PH>HC

Meet Brea Burke, CHW.



Community health workers attack all stages of inequity.

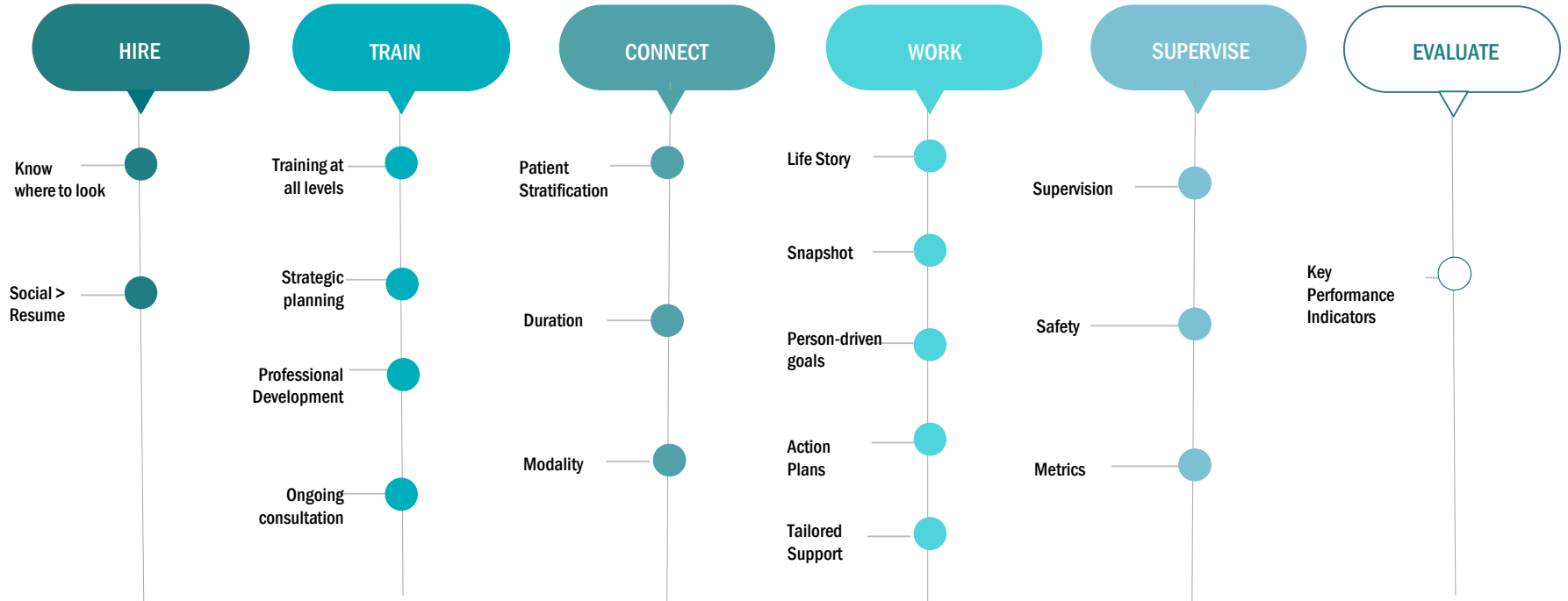


IMPACT: A case study of translating PCOR to improve health.

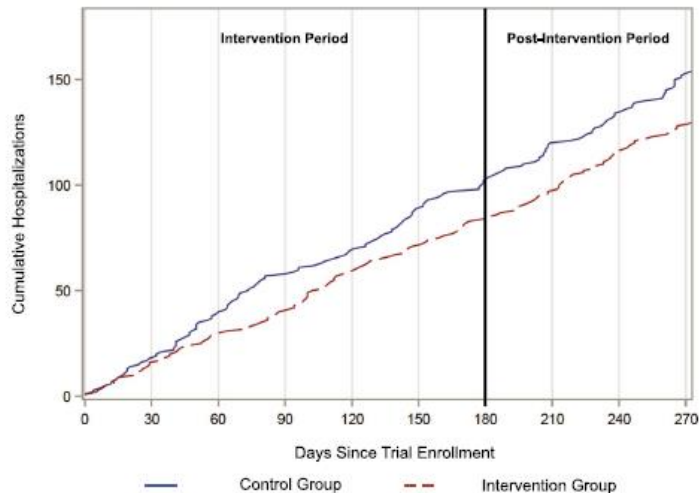
Over a decade ago, we designed IMPaCT...



Our goal was to achieve magic with consistency.



Multiple RCTs. 9,398 patient-months studied.



- **\$2.47:1 ROI**
\$2,500 savings per person per year

- **70% PATIENT ENGAGEMENT**
91% completion of 6-month program

- **66% DECREASE**
of Total Hospital Days

- **HIGHER QUALITY CAHPS/HCAPS**
Primary Care Access
Chronic Disease Mgmt.
Mental Health

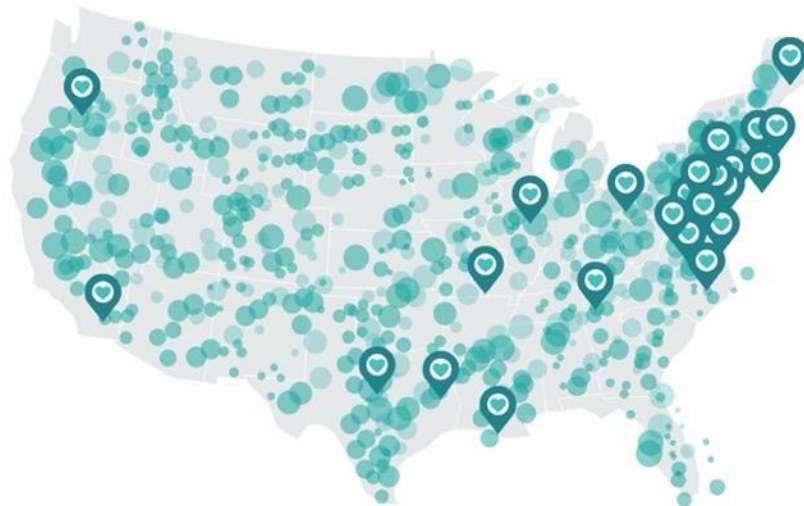
- **94% NET PROMOTER**

- **2% CHW TURNOVER**

PCOR findings have been translated into real-world programs...

20 states

50K lives



Increased
screening &
closed care caps

235 fewer hospital days
Per 1000 patients

30% decrease
in ER visits

...and enabling policies.



President Biden includes Medicare coverage for CHWs in FY23 Congressional budget proposal.

BREAKING NEWS!

Legislation expanding funding for community health worker services is introduced



Senators Casey (D-PA), Tillis (R-NC), Murkowski (R-AK) and Smith (D-MN) have introduced [S.3479, the Building a Sustainable Workforce for Healthy Communities Act](#), which expands funding for community health workers (CHWs).

CNN Opinion Political Op-Eds Social Commentary Audio TV Channels

This group of workers could help turnaround quality of life -- and the economy

Opinion by Shreya Kangovi, Rebekah E. Gee and Susan Blumenthal
Updated 4:45 PM ET, Wed February 10, 2021



Community health worker Luis Hernandez delivers groceries to families with Covid-19 in Star Community.

HRSA announces \$226.5 million funding to build up the community health worker pipeline.



CRITICAL INPUTS FOR SUCCESSFUL COMMUNITY HEALTH WORKER PROGRAMS

A White Paper
November 2021

Thank you

Twitter @shreyakangovi
Chw.upenn.edu