

Accelerating the Use of Findings from Patient-Centered Outcomes Research in Clinical Practice to Improve Health and Health Care

Workshop #1. AHRQ's Proposed Strategic Framework for PCOR Trust Fund Investments
June 9, 2022 8:00am-12:30 pm ET

**Session #1. Developing a Coordinated Interdisciplinary Approach to Decision Making Around
Where to Focus AHRQ's PCORTF Investments**

Moderator: Catherine L. Kothari PhD. Associate Professor, Population Health.
Western Michigan University Homer Stryker MD School of Medicine

Panelists: Reshma Gupta MD, MSHPM. Chief, Population Health and Accountable Care
University of California-Davis

Donald Nease MD. Vice Chair for Community
University of Colorado – Anschutz School of Medicine

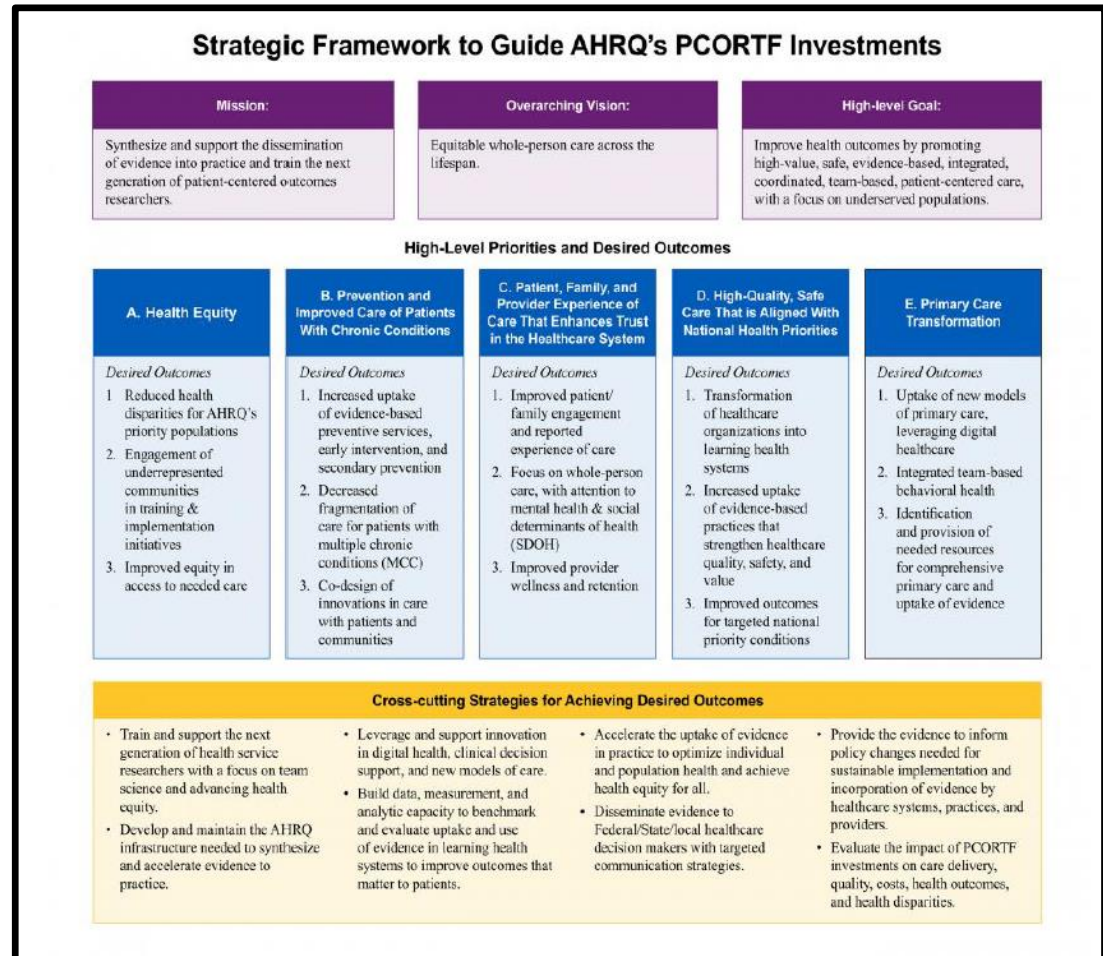
Session Goals

Robust discussion regarding what it means to have a “coordinated interdisciplinary approach to decision-making”

-Strategies for reaching it

-How do we know when we have achieved it

-Tracking impact



KEY CONCEPTS

INTERDISCIPLINARY. Clinical and community sectors contributing to the delivery and quality of health services.

- Within clinical care, includes health systems, primary care, FQHCs, specialty care, etc
- Within community, includes mental/behavioral health, public health, social services, economics, policymakers, information technology, etc
- Includes researchers and quality improvement experts

PARTNERS. Decision-makers at local, state and federal levels, including administrators, payors, providers and frontline staff. Includes patient decision makers and their families, as well as community leaders

EQUITY. Health service access, quality and uptake are the same for all populations, particularly those that have been historically underserved (based upon their gender, race or ethnicity, socioeconomic status, geographic location, etc)

ENGAGEMENT. Interacting with the goal of understanding partners' experiences, circumstances, values and priorities

SESSION FORMAT

20 minutes

A Focus on Goals and Authentic Partnerships

Reshma Gupta MD, MSHPM

Chief of Population Health and Accountable Care, UC Davis Health

20 minutes

**A View from the Worlds of Practice-Based Research Networks and
Community Engagement**

Donald Nease, Jr., MD

Professor, Dept of Family Medicine, University of Colorado

15 minutes

**Panelists response to written comments and questions by
audience**