

# 100 Million Mouths Campaign

---

Shenam Ticku, BDS, MPH  
Instructor and Pre-doctoral OHPE Discipline Director  
Oral Health Policy and Epidemiology  
Harvard School of Dental Medicine



# Disclosures

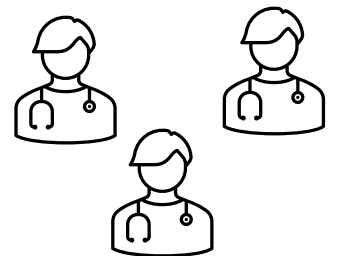
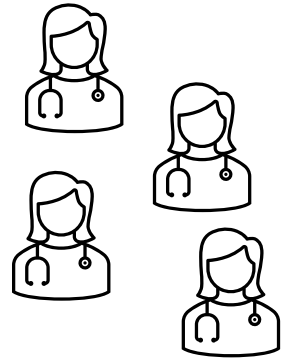
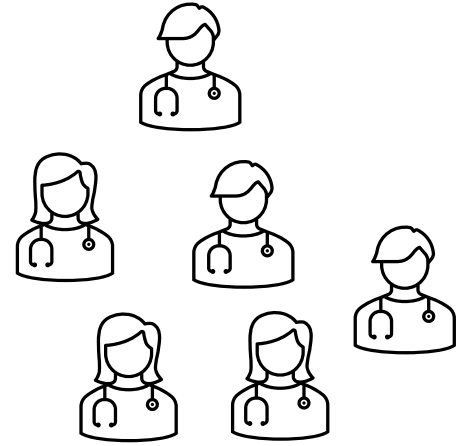
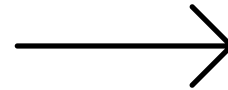
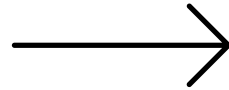
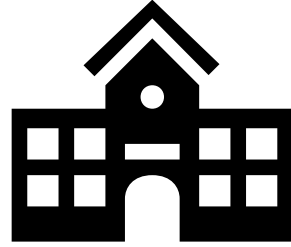
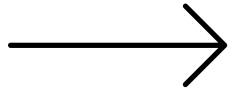
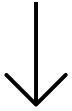
The 100 Million Mouths Campaign currently receives funding from the Arcora Foundation, CareQuest Institute for Oral Health, Colgate-Palmolive Inc., Delta Dental of Arizona Foundation, Delta Dental Community Care Foundation, Delta Dental Foundation of Michigan, Ohio, Indiana, and North Carolina, Delta Dental of Idaho Foundation, Delta Dental of Illinois Foundation, Delta Dental of Iowa Foundation, Delta Dental South Dakota Foundation, and the Northeast Delta Dental Foundation.

This project was supported by the Health Resources and Services Administration (HRSA) of the U.S. Department of Health and Human Services (HHS) as part of an award totaling \$3,500,000. The contents are those of the author(s) and do not necessarily represent the official views of, nor an endorsement, by HRSA, HHS or the U.S. Government.

# Oral Health Champion

- More satisfaction with oral health competence of graduates
- More hours of oral health into their curriculum
- Formal relationship between the program and a dental school, residency or hygiene program





# 26 Oral Health Education Champions Across the U.S



## Oral Health Champions: 2020-Present



Stephen Mitchell,  
DMD, MS  
**ALABAMA**



Elisa Rosier,  
MD  
**ALASKA**



Eve Hoover,  
MS, PA-C  
**ARIZONA**



Jessica  
Cunningham,  
MD  
**ARKANSAS**



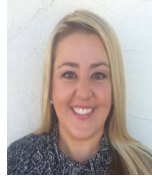
Karla Testa, MD,  
FAAP, FACP  
**DELAWARE**



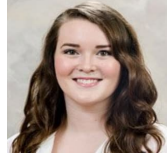
Rachel Fink,  
MPA, PA-C  
**GEORGIA**



Matthew Oishi,  
DMD  
**HAWAII**



Monica Colleen  
Stephenson, RDH-ER,  
MS  
**IDAHO**



Kayla Martinez,  
MS, PA-C  
**ILLINOIS**



Michael Metts,  
DO  
**IOWA**



Kathryn D.  
Hunt, RDH,  
ECPII  
**KANSAS**



Wanda C.  
Gonsalves,  
MD  
**KENTUCKY**



Mikki Bouquet,  
MD  
**LOUISIANA**



Jeff Stone,  
DO  
**MAINE**



Melanie  
Simmer-  
Beck, PhD  
**MISSOURI**



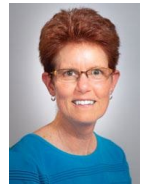
Debra  
Munsell,  
DHSc, PA-C  
**MISSISSIPPI**



Leslie  
Greenberg,  
MD, FAAP  
**NEVADA**



Sherry. A  
Greenberg,  
PhD, RN  
**NEW JERSEY**



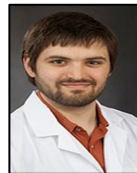
Christine  
Cogil, DNP,  
MPS, RN  
**NEW MEXICO**



Cynthia Lord,  
MHS, PA-C  
**OHIO**



Michelle  
Schimelpfeni  
MD, MPH  
**SOUTH DAKOTA**



Taylor Wright,  
MD  
**TENNESSEE**



Kathy  
Mariani,  
MD, MPH  
**VERMONT**



Toby Keys,  
MPH  
**WASHINGTON**



Elizabeth  
Puette, BSD,  
MSDH  
**WEST VIRGINIA**



Gregory  
McCue, MD  
**WYOMING**

**Our 26 Champions reflect diverse disciplines**



# Training and Technical Assistance



Two-day, 4-hour workshops with  
new Champions



Monthly meetings with  
experienced and new Champions



One-on-one assistance to all  
Champions

# Being a Champion

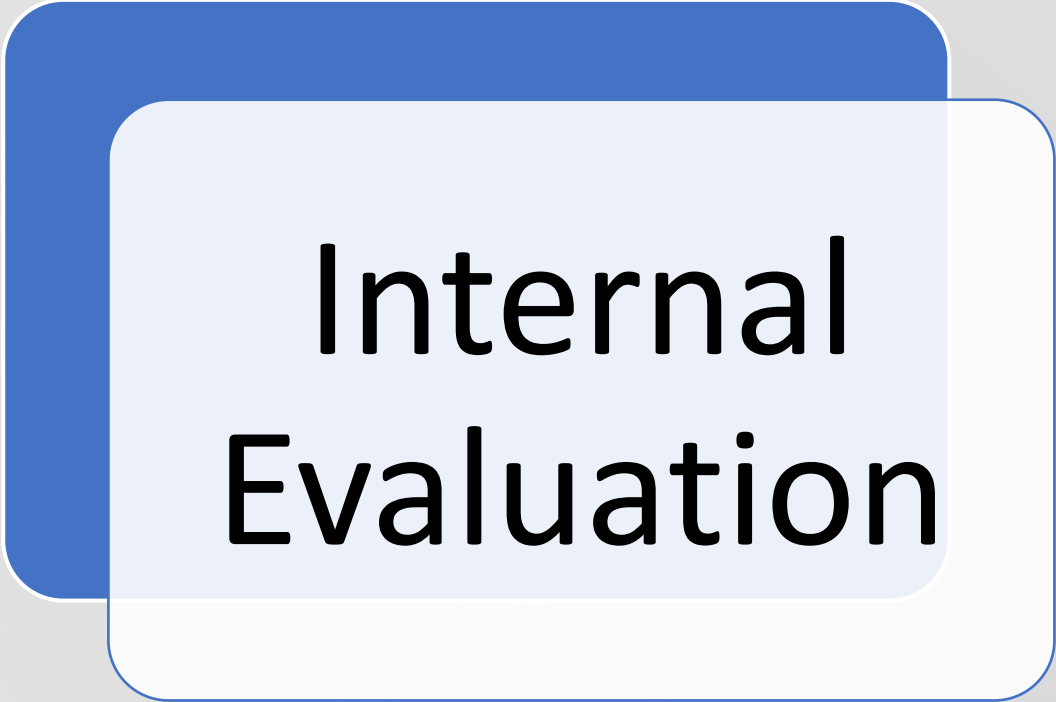
Engage with primary  
care training  
programs in the state  
to include oral health  
curriculum

Ensure inclusion of  
health equity

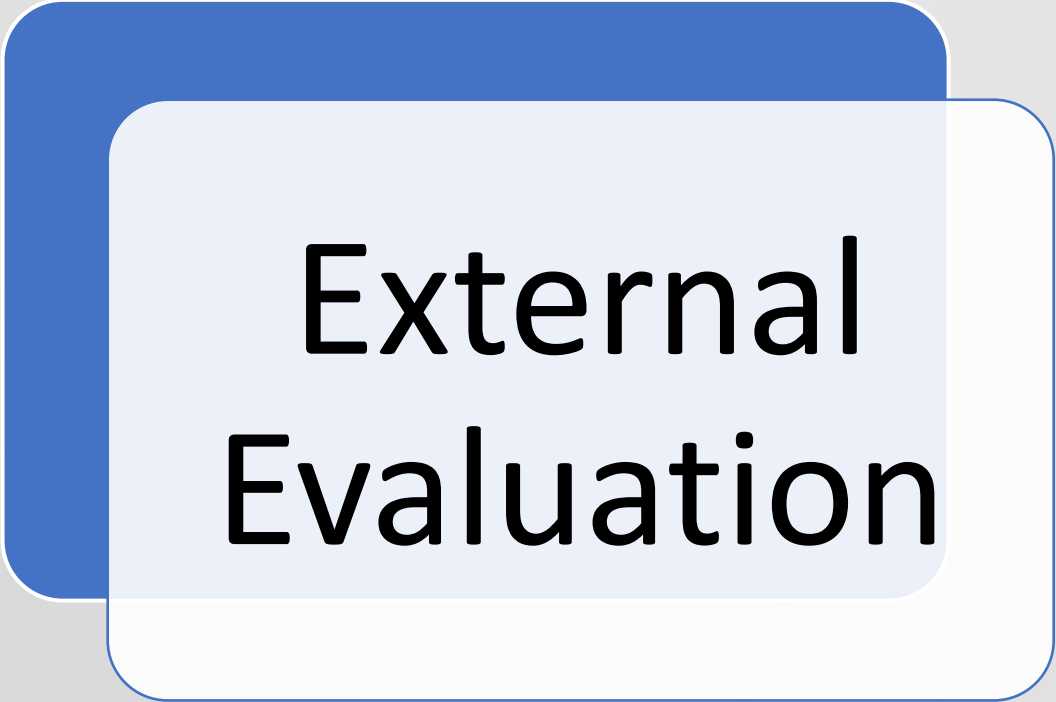
Include learner  
evaluations

Ensure sustainability  
of the curriculum



A graphic consisting of a light blue rounded rectangle with a dark blue border, set against a white background. The text "Internal Evaluation" is centered within the rectangle.

**Internal  
Evaluation**

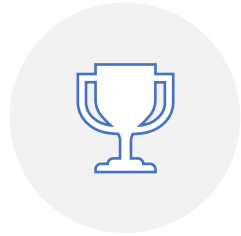
A graphic consisting of a light blue rounded rectangle with a dark blue border, set against a white background. The text "External Evaluation" is centered within the rectangle.

**External  
Evaluation**

# Internal Evaluation



NUMBER OF  
APPLICATIONS  
RECEIVED



NUMBER OF  
CHAMPIONS  
RECRUITED



ASSESSING 2-DAY  
TRAINING  
WORKSHOP



YEAR-END  
CHAMPION  
INTERVIEWS



COLLABORATIONS  
TO ENSURE  
SUSTAINABILITY

# Assessing 2 Day Training workshop

| Workshop Sessions  | Minimum* | Maximum* | Mean |
|--|----------|----------|------|
| <b>Session 1</b>   |          |          |      |
| Introduction to CIPCOH and the 100 MMC Program                 | 4.00     | 5.00     | 4.9  |
| Outlining expectations   | 4.00     | 5.00     | 4.7  |
| Making the case for oral health                                | 4.00     | 5.00     | 4.9  |
| Resources for oral health teaching and sustainability          | 5.00     | 5.00     | 5.0  |
| How to assess an oral health curriculum                        | 4.00     | 5.00     | 4.7  |
| Working with state resources                                   | 3.00     | 5.00     | 4.4  |
| <b>Session 2</b>   |          |          |      |
| Recap / Highlights from Session 1                              | 4.00     | 5.00     | 4.6  |
| Identifying schools and programs in your state                 | 4.00     | 5.00     | 4.6  |
| Case Studies in changing oral health curriculum                | 4.00     | 5.00     | 4.9  |
| Using an equity lens to include oral health in your curriculum | 3.00     | 5.00     | 4.7  |
| Implementing evaluation in the 100 Million Mouths Campaign     | 4.00     | 5.00     | 4.6  |
| Introduction to RedCap and Google Drive                        | 3.00     | 5.00     | 4.6  |

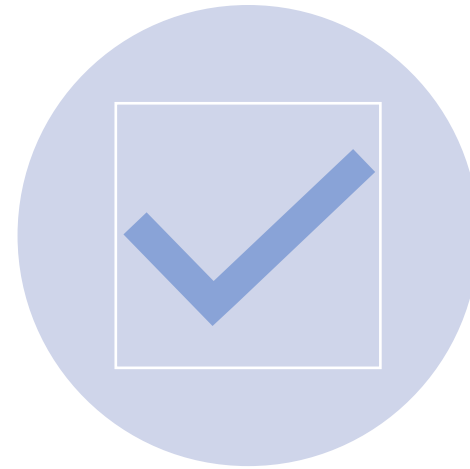
\*Rated on a scale of 1-5, where 1= very low and 5= very high

4.7

# External Evaluation



STATE-LEVEL EVALUATION

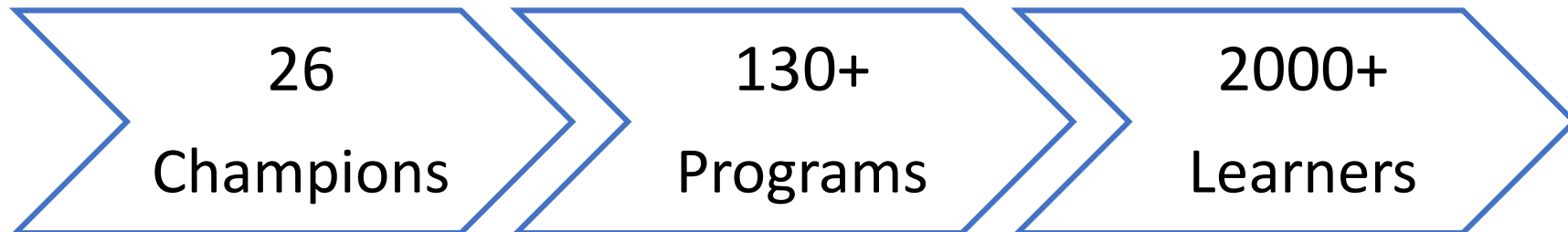


PROGRAM-LEVEL  
EVALUATION

## Engagement with Primary Care Programs and Learners Trained in Oral Health



## Engagement with Primary Care Programs and Learners Trained in the Application of Fluoride Application



# Acknowledgements



Hugh Silk, MD, MPH



Christine Riedy, Ph.D, MPH



Diana Rinker, MEd Psy



Scott Hebert, MS

Thank you!