

# Assessing Mortality and Significant Morbidity Following Hurricane María in Puerto Rico

Rafael A Irizarry

Dana-Farber Cancer Institute and Harvard

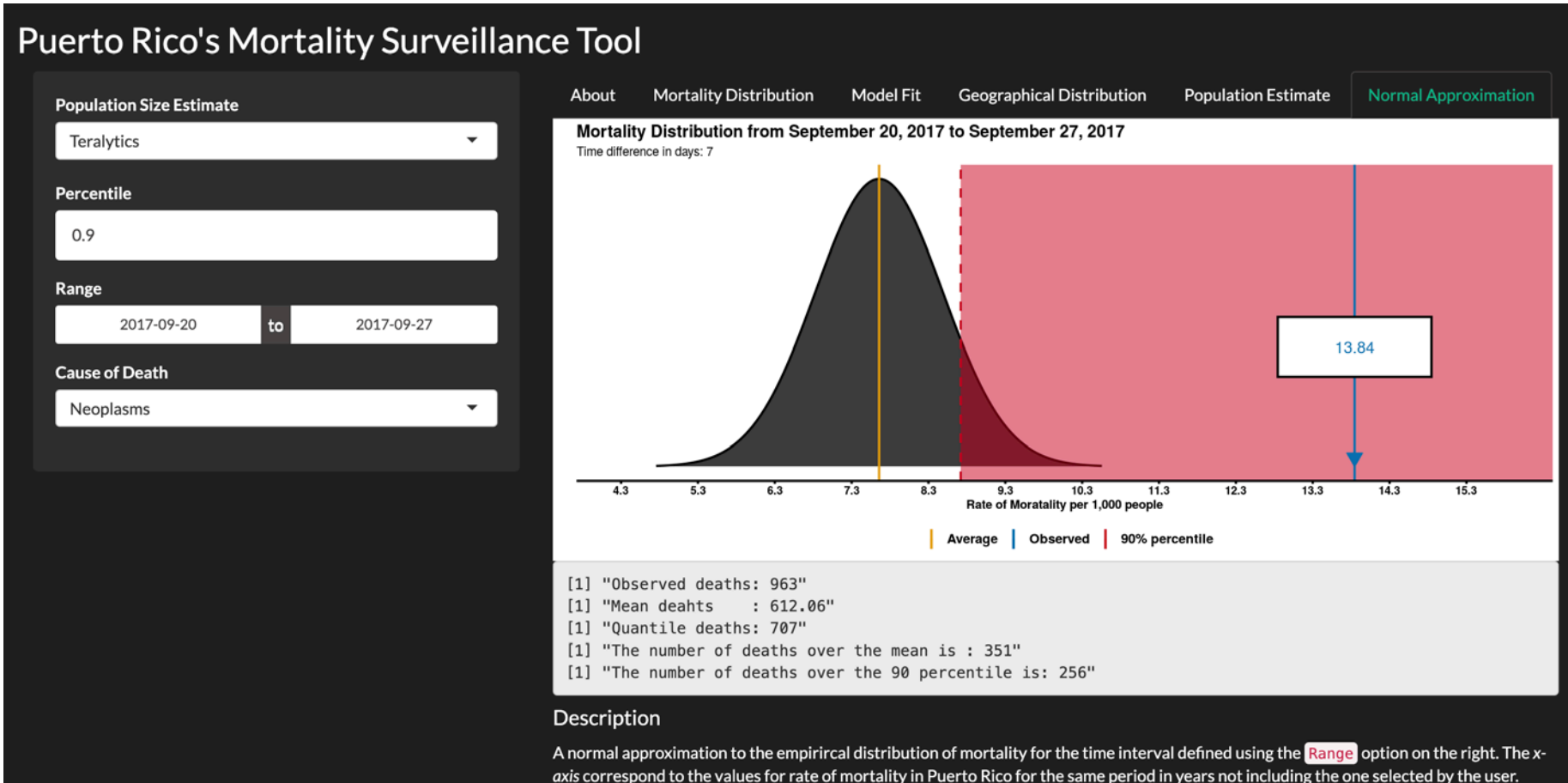
@rafalab

# Surveillance app based on death rates

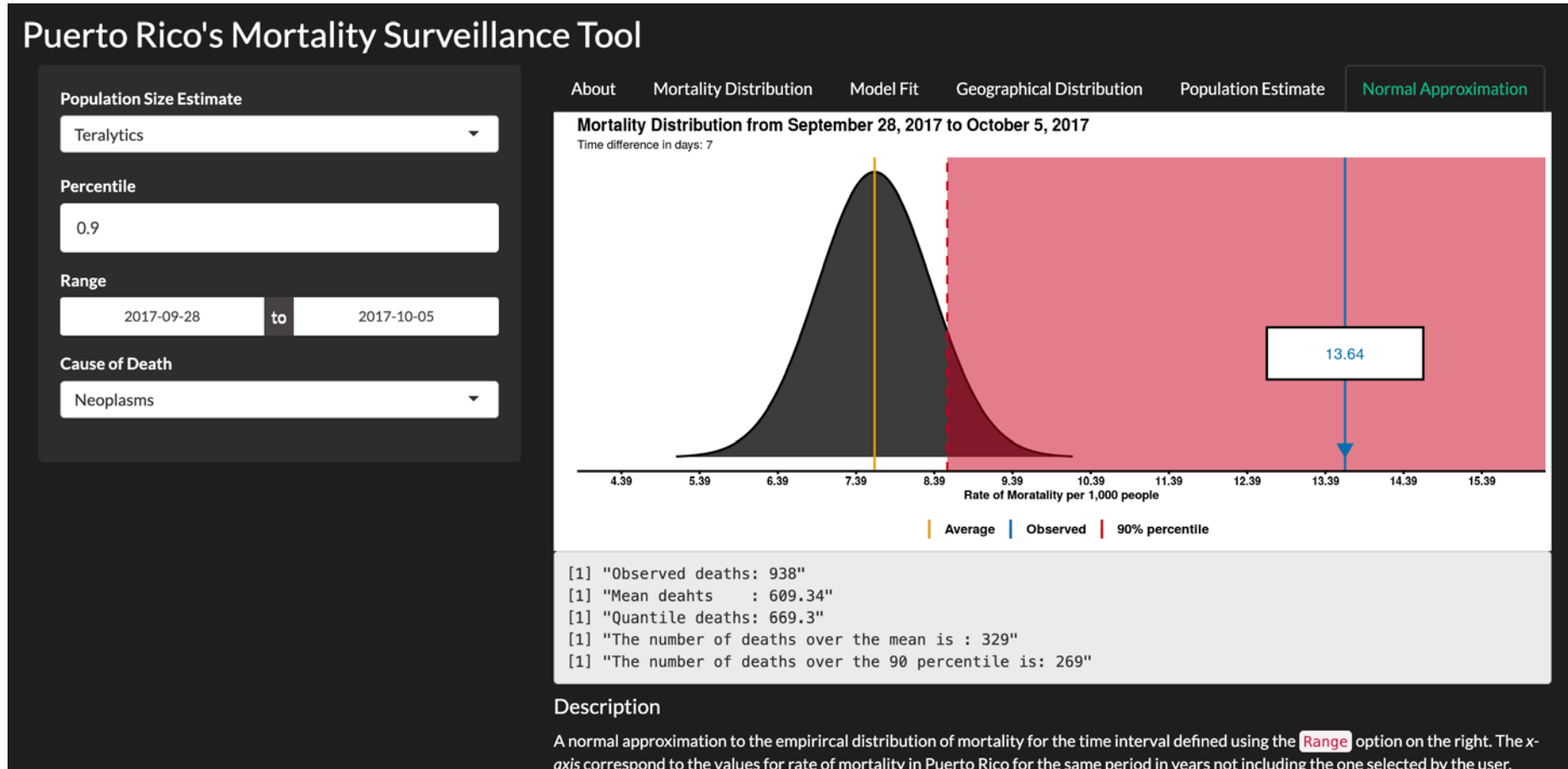
- Compares death rate in a give period to historical data
- Work by Rolando Acosta

<https://rjnunez.shinyapps.io/prmst/>

# First week after María



# Second week





"Every death is a horror," Trump said, "but if you look at a real catastrophe like Katrina and you look at the tremendous -- hundreds and hundreds of people that died -- and you look at what happened here with, really, a storm that was just totally overpowering ... no one has ever seen anything like this."

**"What is your death count?" he asked as he turned to Puerto Rico Gov. Ricardo Rosselló. "17?"**

**"16," Rosselló answered.**

"16 people certified," Trump said. "Sixteen people versus in the thousands. **You can be very proud** of all of your people and all of our people working together."

# Estimates of excess deaths in Puerto Rico following Hurricane Maria

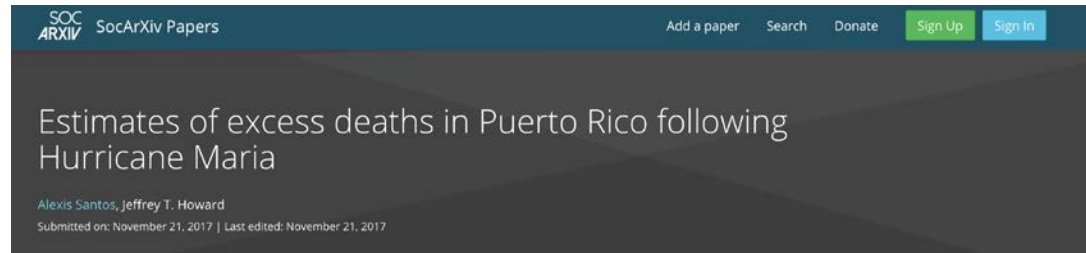
Alexis Santos, Jeffrey T. Howard

Submitted on: November 21, 2017 | Last edited: November 21, 2017

## Results:

Expected deaths for September and October were 2,383 (95% C.I. 2,296-2,469) and 2,428 (95% C.I. 2,380 - 2,476), respectively. Estimates for total deaths, for September and October 2017 were 2,987 (95% CI 2,900-3,074) and 3,043 (95% C.I. 2995-3,091), respectively. **The difference between our estimates and the upper 95% CI for the average deaths is 518 deaths for September and 567 deaths for October.**

# Different results for groups with access to death registry data



Expected deaths for September and October were 2,383 (95% C.I. 2,296-2,469) and 2,428 (95% C.I. 2,380 - 2,476), respectively. Estimates for total deaths, for September and October 2017 were 2,987 (95% CI 2,900-3,074) and 3,043 (95% C.I. 2995-3,091), respectively. **The difference between our estimates and the upper 95% CI for the average deaths is 518 deaths for September and 567 deaths for October.**

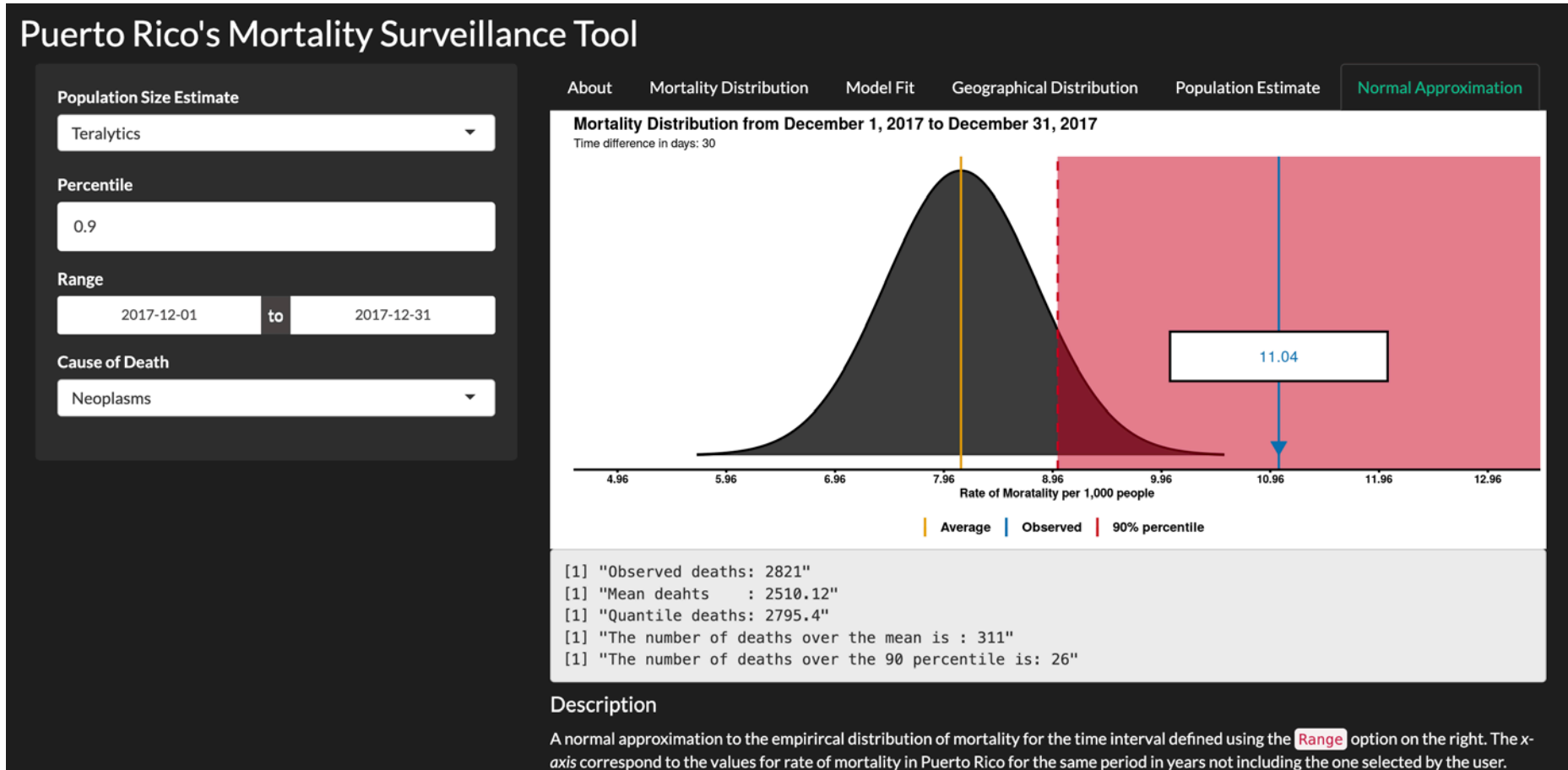


## December 13 statement from Puerto Rico's Secretary of the Department Of Public Safety

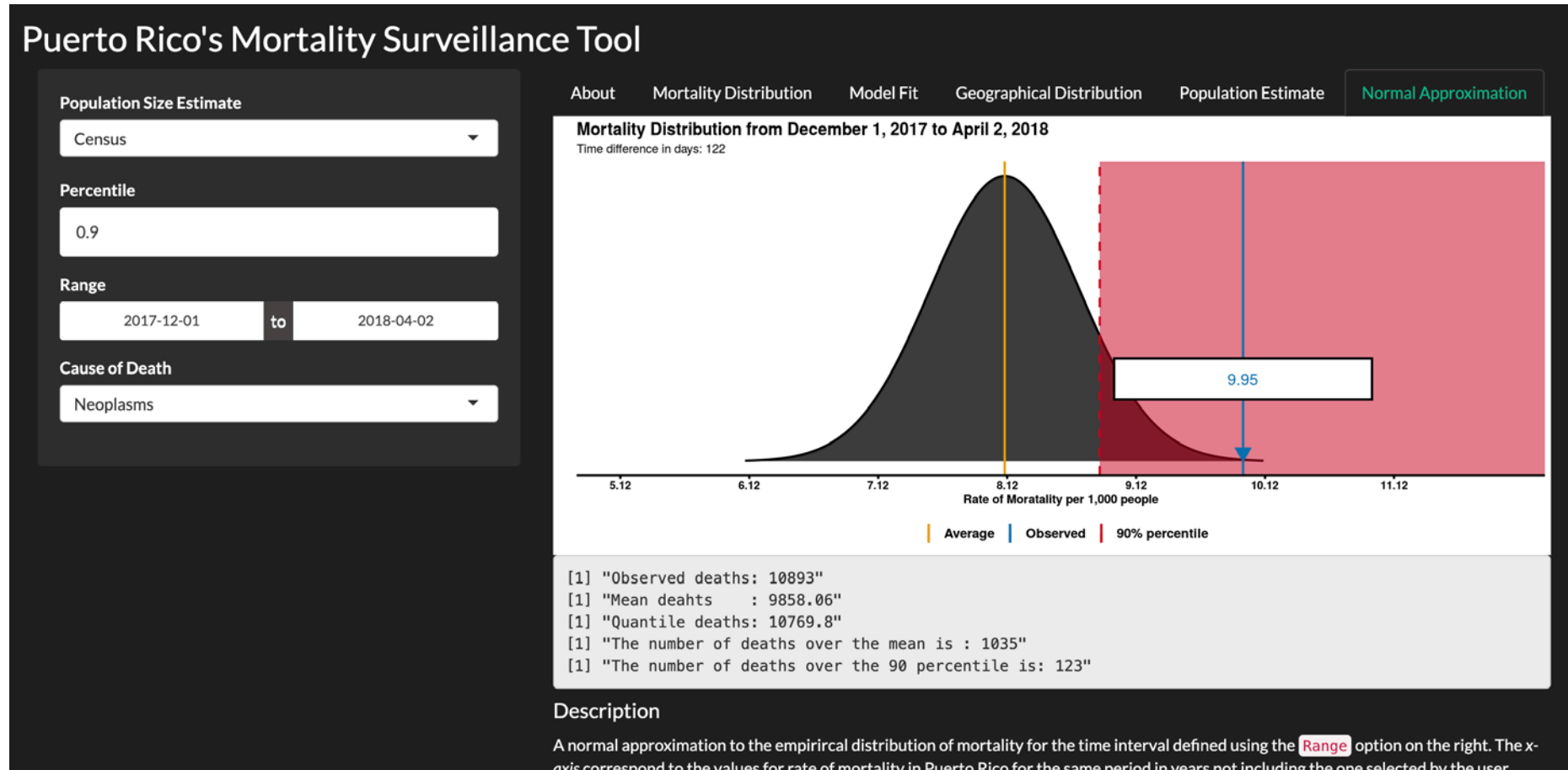
"According to the data, the total deaths registered in September were: 2,890 in 2017, 2,367 in 2016, and 2,258 in 2015. For October, the total of deaths registered were: 2,974 in 2017, 2,357 in 2016, and 2,393 in 2015. **It should be noted that similar numbers are seen in December and January of previous years when no atmospheric phenomenon took place.** For December, the total deaths were: 2,854 in 2016 and 2,516 in 2015. Meanwhile, in January the total deaths were: 2,894 in 2017, 2,742 in 2016, and 2,744 in 2015. With this, I suggest that the number of total deaths in Puerto Rico is not a fixed one. As for the deaths directly and indirectly related to hurricane Maria today, December 13, 2017, there are 64."

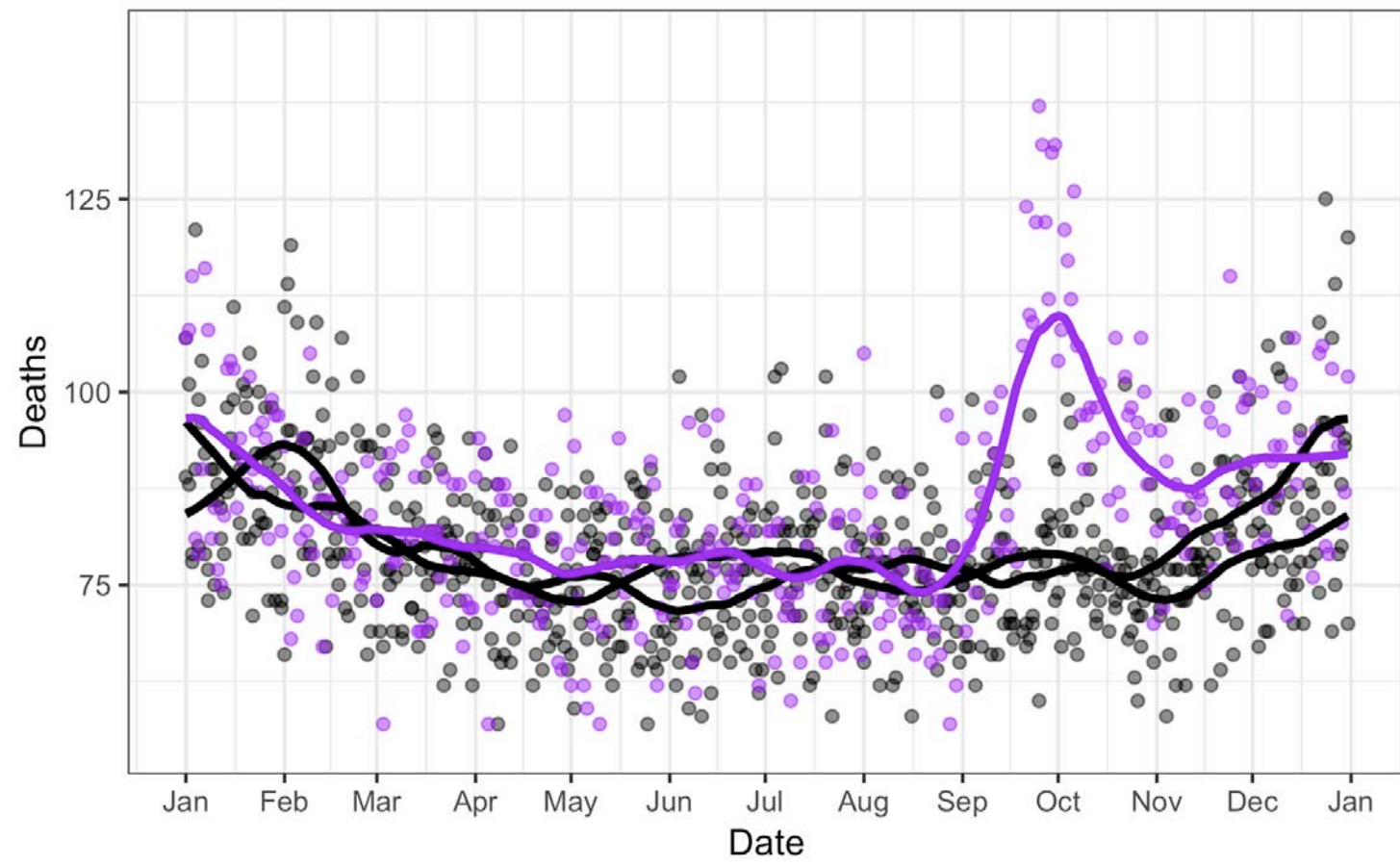


# December

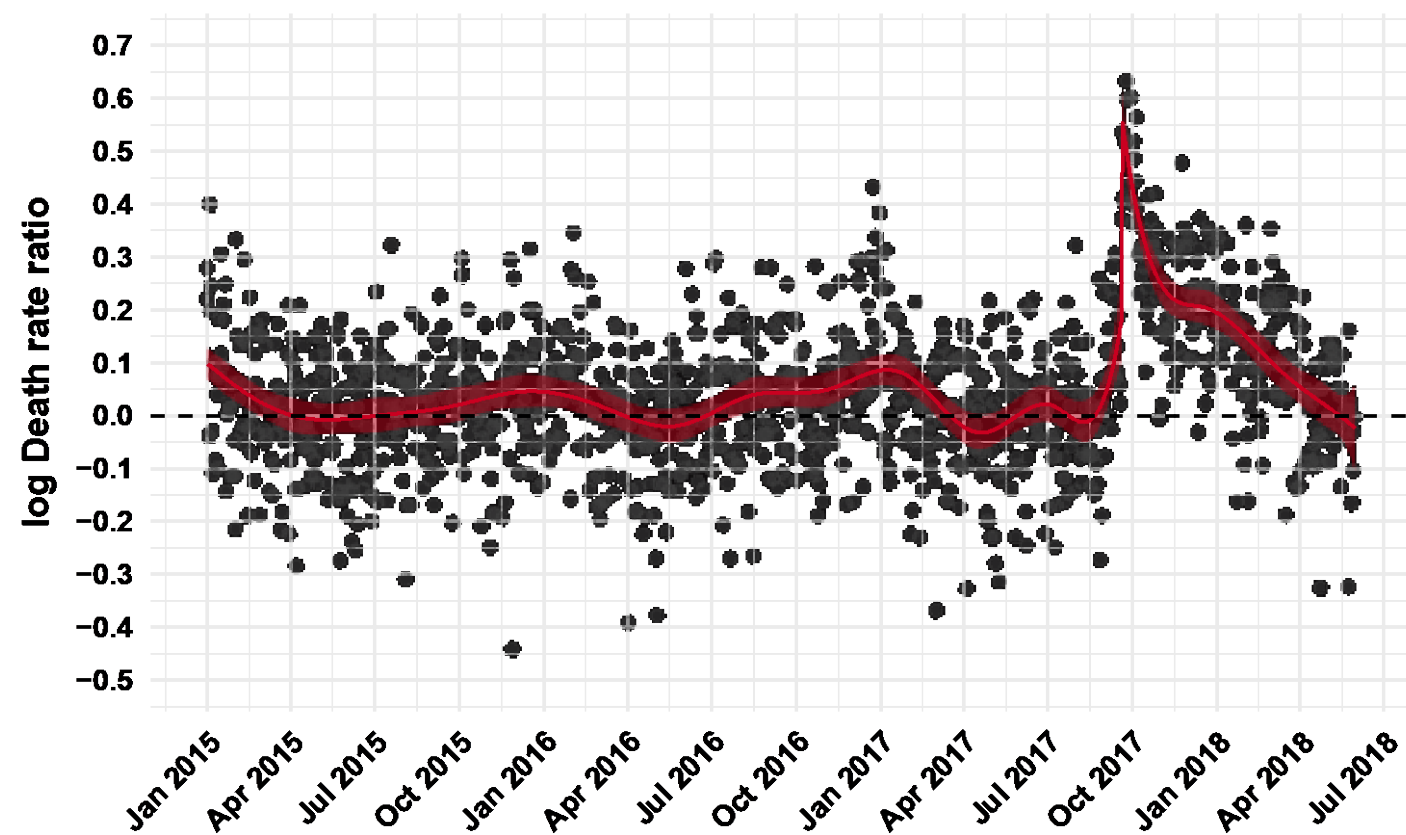


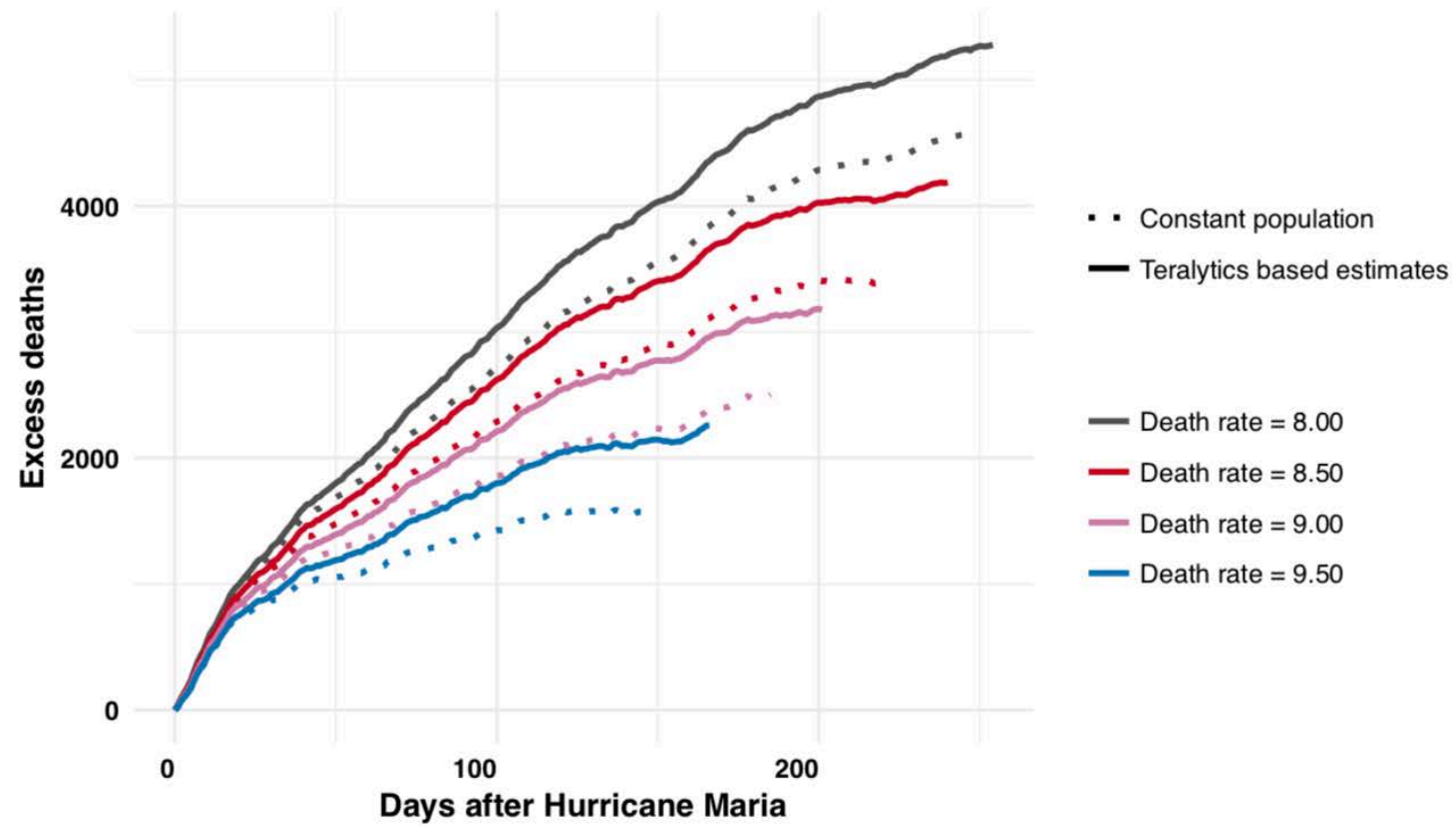
# December using Census population estimate



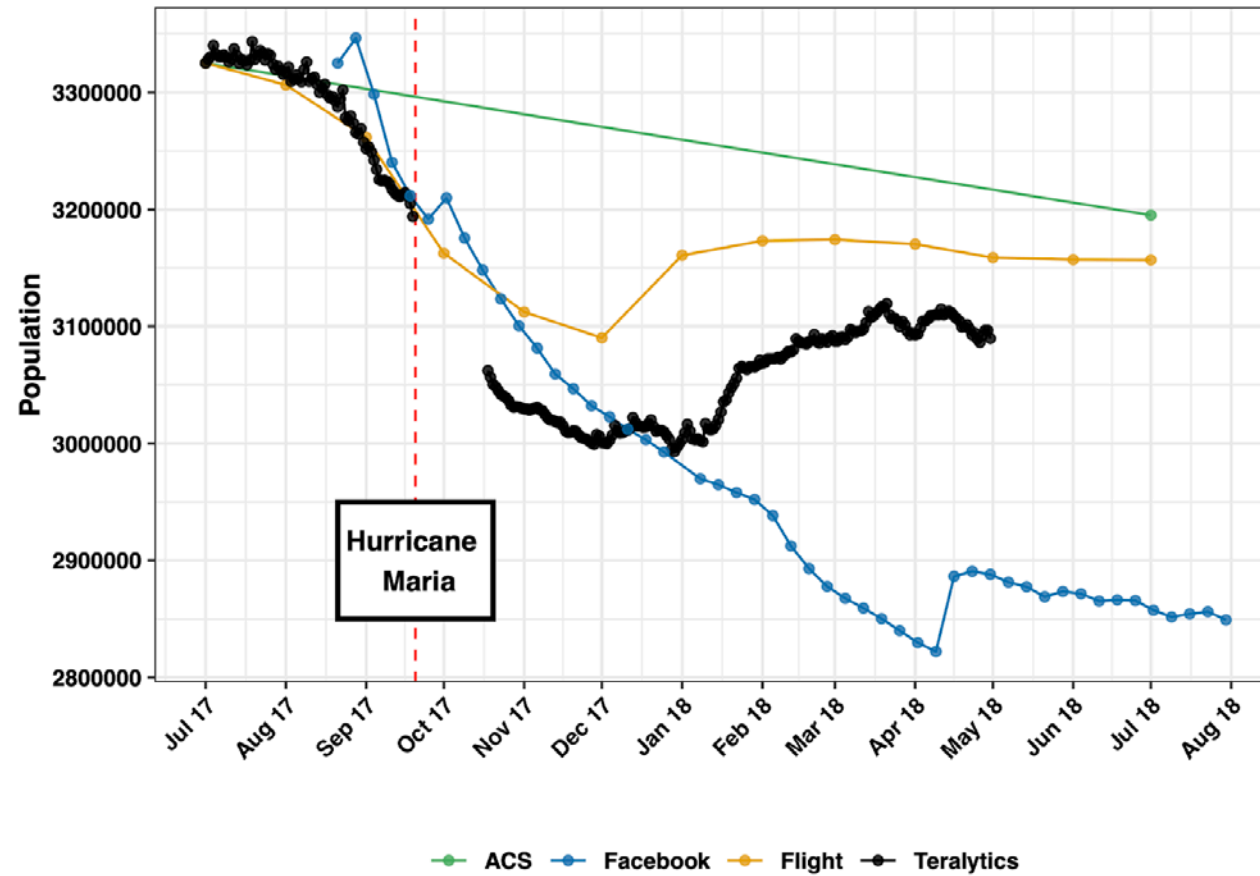


PR-2015-2018





# Population estimates



Thanks

# Puerto Rico's Mortality Surveillance Tool

## Population Size Estimate

Census

## Percentile

0.9

## Range

2017-07-01

to

2018-04-30

## Cause of Death

Neoplasms

About

Mortality Distribution

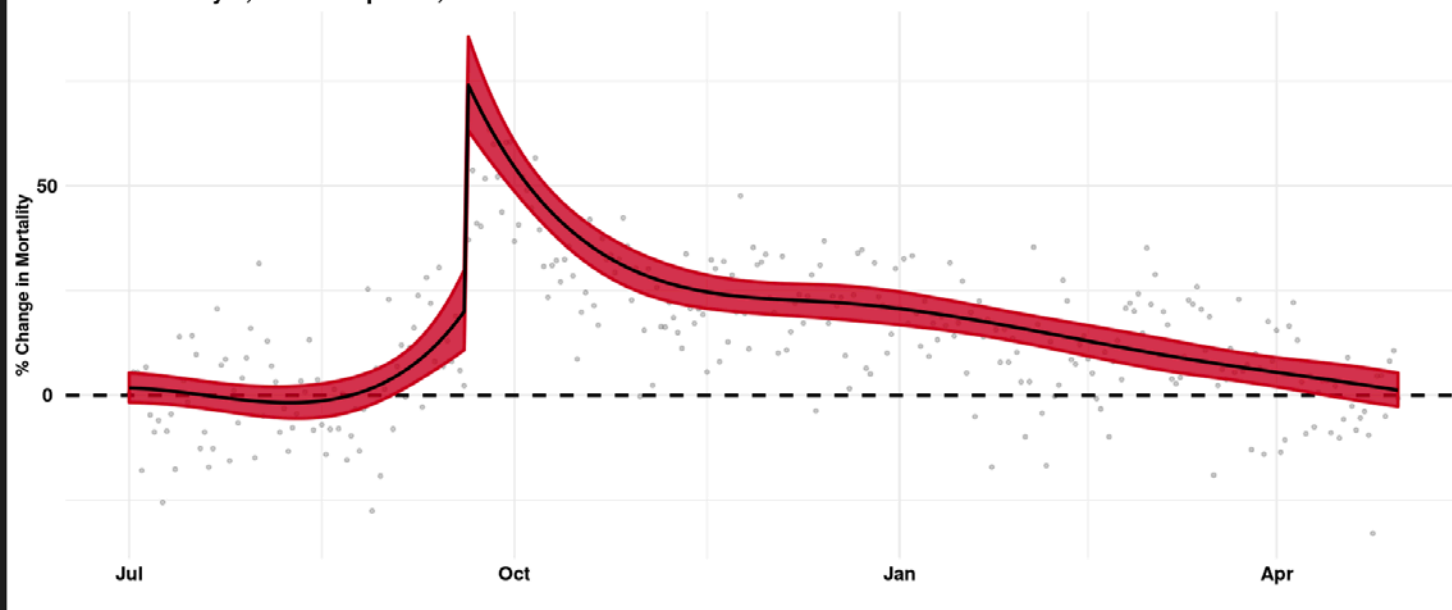
Model Fit

Geographical Distribution

Population Estimate

Normal Approximation

Model fit: July 1, 2017 to April 30, 2018



## Description

Percent change in mortality from the average rate of mortality based on [Acosta and Irizarry](#). The y-axis correspond to the percent change in mortality from the expected rate of mortality and the x-axis correspond to the period of time specified by the user. The solid-black line correspond to the estimated percent change in mortality and the red shaded region around the line shows the 95% confidence interval based on inverting the Wald statistic. Here is the following paragraph from [Acosta and Irizarry](#) to provide some intuition:

*"A virus epidemic will make the solid-black line go up slowly, eradication of this epidemic will make the solid-black line go down slowly, and a catastrophe will make the the solid-black line jump up sharply"*



# Puerto Rico's Mortality Surveillance Tool

## Population Size Estimate

Census

## Percentile

0.9

## Range

2017-09-20

to

2017-10-31

## Cause of Death

Neoplasms

About

Mortality Distribution

Model Fit

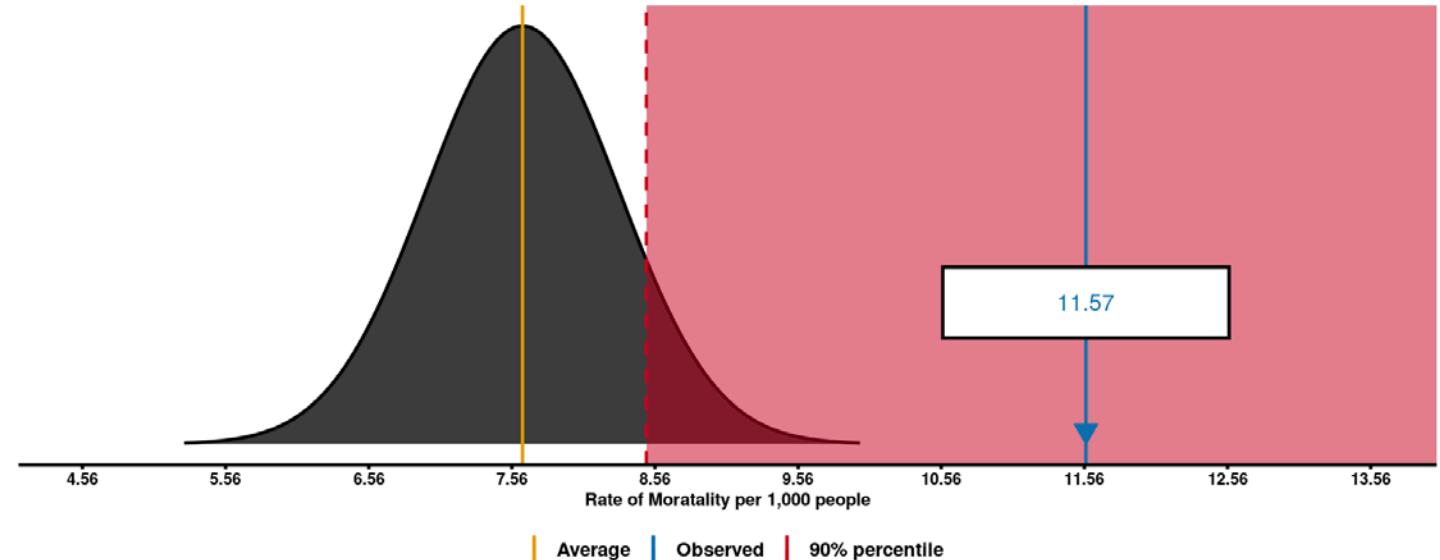
Geographical Distribution

Population Estimate

Normal Approximation

## Mortality Distribution from September 20, 2017 to October 31, 2017

Time difference in days: 41



```
[1] "Observed deaths: 4379"
[1] "Mean deahts : 3201.09"
[1] "Quantile deaths: 3484.3"
[1] "The number of deaths over the mean is : 1178"
[1] "The number of deaths over the 90 percentile is: 895"
```

## Description

A normal approximation to the empircal distribution of mortality for the time interval defined using the **Range** option on the right. The x-axis correspond to the values for rate of mortality in Puerto Rico for the same period in years not including the one selected by the user.