

# PERSPECTIVES FROM RURAL UNDERSERVED POPULATIONS ON PREPAREDNESS, RESPONSE, AND RECOVERY



World Institute  
on Disability



Global Alliance for  
Disaster Resource  
Acceleration (GADRA)

Marcie Roth Executive Director & CEO



# Disability Prevalence



## Disability Impacts **ALL of US**

COMMUNITIES



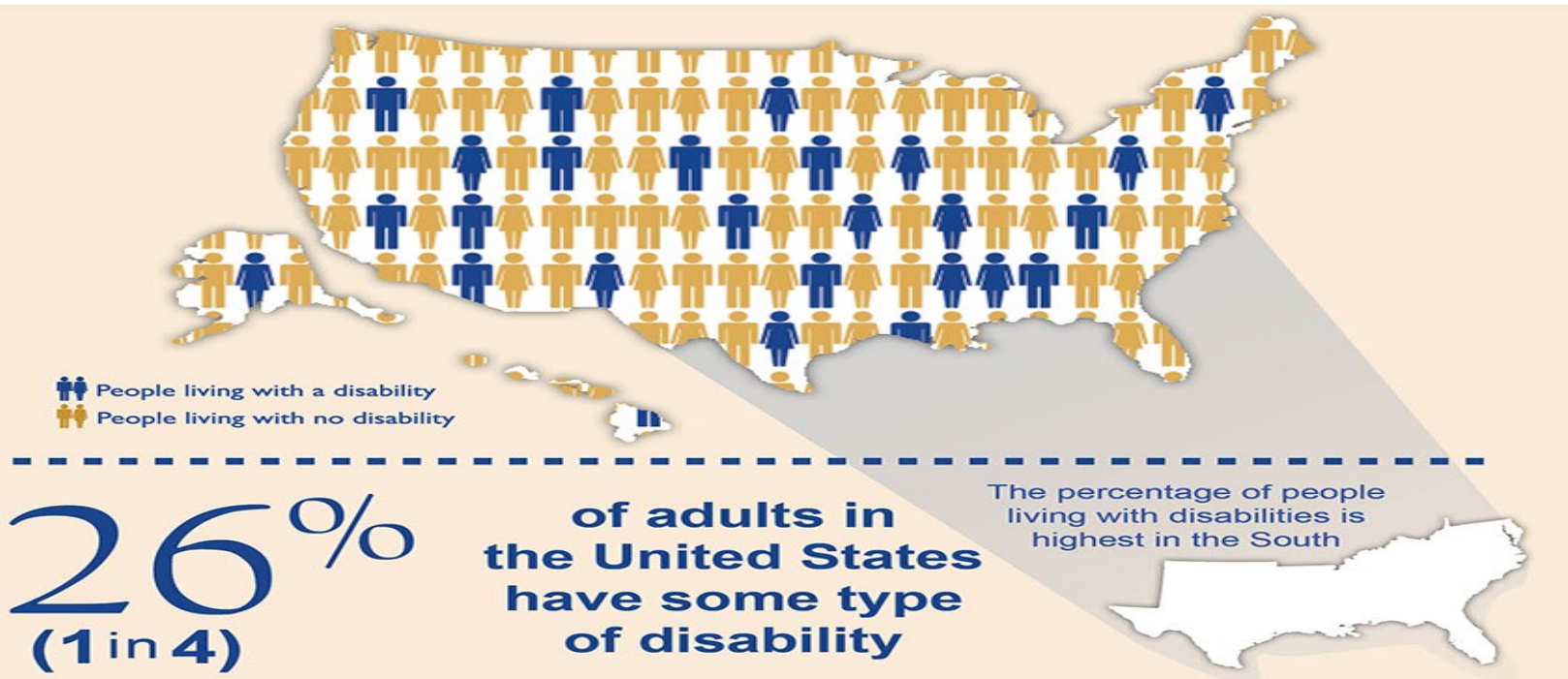
HEALTH



ACCESS



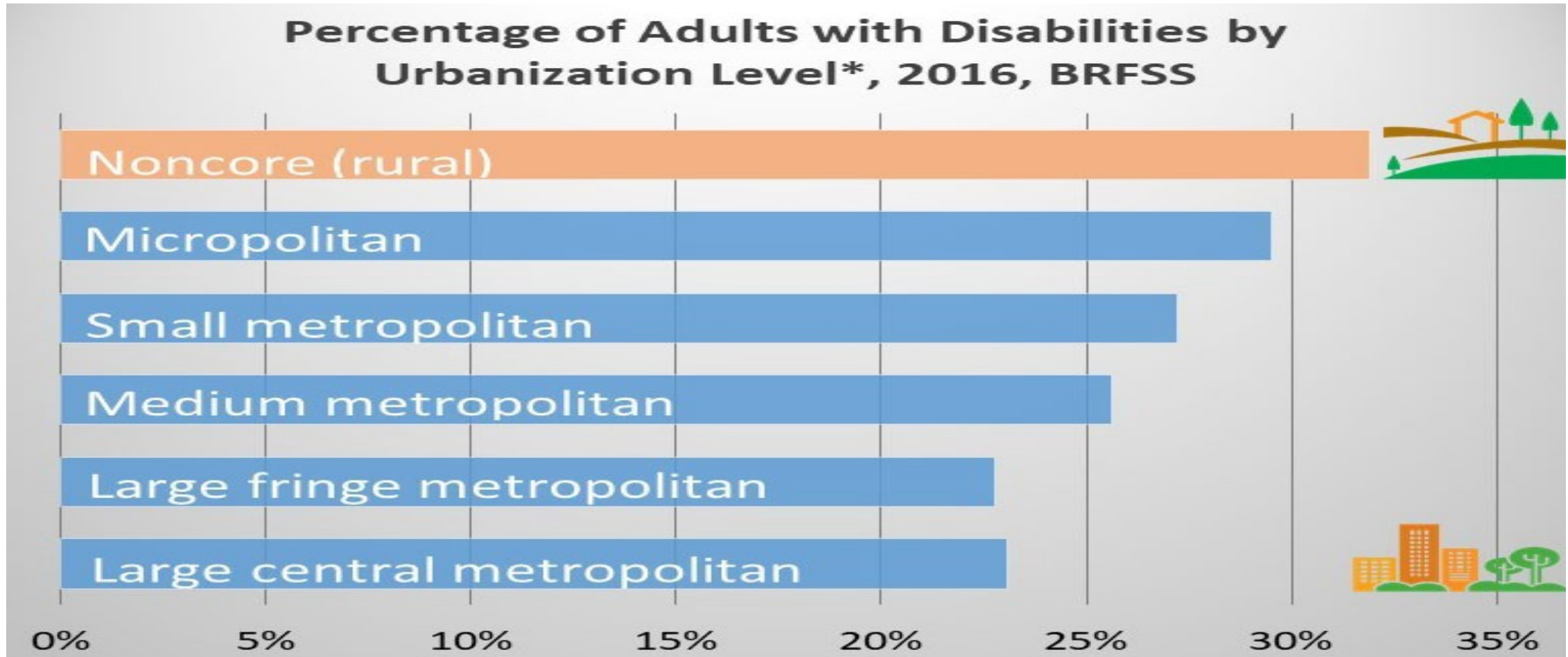
**61 million** adults in the United States live with a disability



**Join CDC and its partners as we work to improve the health of people living with disabilities.**

For more information go to [www.cdc.gov/disabilities](http://www.cdc.gov/disabilities)

# Rural Disability Prevalence



# Disproportionate Impact



According to the United Nations, “children and adults with disabilities and older adults are 2-4 times more likely to be injured or die in a disaster due to a lack of planning, accessibility and accommodation, most are not due to diagnostic labels or medical conditions.”

-United Nations Sendai Framework for Disaster Risk Reduction - 2015-2030

On average, **198.8 million** people are affected by natural disasters each year.<sup>1</sup>



People with disabilities are **2-4 times** more likely to be killed in disasters.<sup>2</sup>

# Access and Functional Needs



- Children and adults with physical, mobility, sensory, intellectual, developmental, cognitive, or mental health disabilities
- Infants and children without disabilities
- Older adults
- People with \*chronic or temporary health conditions
- Women in the late stages of pregnancy
- People with limited English proficiency, low literacy or additional communication needs
- People with very low incomes
- People without access to transportation
- People experiencing homelessness
- Others

# Whole Community





The United Nations Sendai Framework for Disaster Risk Reduction recognizes that “not only are persons with disabilities disproportionately affected by disasters, but – crucially – that their knowledge and leadership skills are essential for building resilient, inclusive and equitable societies”.

# From Liability to Asset





# Barriers in Disasters



- Implicit bias and structural inequity
- Monitoring and enforcement of disability civil rights laws- Rehabilitation Act, ADA, Olmstead decision, others
- Failure to center the leadership of multiply-marginalized disabled people
- Built environment accessibility
- Government, non-government and humanitarian program access
- Equally effective communication access
- Accessible and actionable notice, warnings, notifications, and information
- Accommodations (interpreters, personal assistance, transportation)
- Emergency management/ first responder, skills, knowledge, comfort
- “medical need” = segregation and institutionalization

# Whole Community Impact



What happens to people with disabilities has a direct impact not only on them but on the rest of the society.

-World Report on Disability 2011

# Diversity, Equity & Inclusion Must Include Accessibility







## Public Health Emergencies and the Waiver of Section 1135 of the Social Security Act



# Civil Rights Protections in Emergencies



“Civil rights protections and responsibilities still apply, even during emergencies. They cannot be waived.”

US Department of Justice



**GLOBAL ALLIANCE FOR  
DISASTER RESOURCE  
ACCELERATION**

# Supporting Disability-led Organizations in Serving Their Disaster-Impacted Community



- Accessible website
- Meets General Data Protection Regulation Standards
- Multi-lingual
- Flexible and customizable
- Single point of entry
- Supports DLOs, Partners, Survivors, Funders,
- Available on mobile devices

<https://gadra.communityos.org/>

## Welcome to the GADRA Virtual Emergency Operations Center

Powered by Visionlink

Donate

Donate to Turkiye and Syria

Disaster Assistance



Click to apply

Corporate Funders



Click to give

Join GADRA



Click to apply

About GADRA



Click to learn more

Other Programs



Click to view

# Resilience



Resilience is the ability to anticipate risk, limit impact, and bounce back rapidly through survival, adaptability, evolution, and growth in the face of turbulent change.

True resilience is only achievable with a full commitment to equal access, equity and whole community inclusion.



# Contact the World Institute on Disability



- **Website:** [www.wid.org](http://www.wid.org)
- **Email:** [info@wid.org](mailto:info@wid.org)
- **Phone:** 510-225-6400
- **Facebook:** [www.facebook.com/WorldInstituteonDisability](http://www.facebook.com/WorldInstituteonDisability)
- **Twitter:** [www.twitter.com/WID\\_org](http://www.twitter.com/WID_org)
- **Instagram:** [@worldinstituteondisability/](https://www.instagram.com/worldinstituteondisability/)
- **LinkedIn:** [www.linkedin.com/company/world-institute-on-disability/](http://www.linkedin.com/company/world-institute-on-disability/)

