



*Jacqueline (Jack) Meszaros*

*jmeszaro@nsf.gov*

*Science and Technology Advisor for Natural Hazards, Disasters, and Resilience*

# NSF-supported Extreme Event Research Infrastructure/Resources

# Grants for Rapid Response Research (RAPID)

- Allowable when there is severe urgency with regard to availability of, or access to data, facilities or specialized equipment, including quick-response research on natural or anthropogenic disasters and similar unanticipated events.
- PI(s) must contact the NSF program officer(s) whose expertise is most germane to the proposal topic before submitting a RAPID proposal.
- Internal review only. Fast turnaround.
- The Project Description is expected to be brief (two to five pages) and explains why the proposed research is of an urgent nature.
- Awards may be up to \$200,000 for 1-year duration.





# NATURAL HAZARDS ENGINEERING RESEARCH INFRASTRUCTURE (NHERI)



For more information, visit the  
NHERI DesignSafe website: [DesignSafe-ci.org](https://DesignSafe-ci.org)





# DESIGNSAFE-CI

- Established 2015
- Provides data and cloud-based tools for researchers in Natural Hazards Engineering
- Data Depot, Discovery Workspace, Reconnaissance Portal, Learning Center tutorials
- Almost 5,000 users, 15 TB of public data, more than 30,000 tool invocations, over 100,000 views of online training materials
- <https://www.designsafe-ci.org/>



NSF Award #1520817

Ellen Rathje, PI

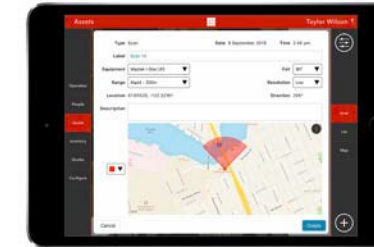


# RAPID NHERI

Natural Hazards Reconnaissance



- The RAPID facility provides investigators with equipment, software, and support services needed to collect, process, and analyze perishable data from natural hazards events.
- Over 300 field instruments, RApp mobile data collection, post-processing
- Since 2018: Over 50 field missions worldwide—in support of 30+ organizations and agencies
- Trained over 200 individuals from academia and federal agencies



[rapid.designsafe-ci.org](http://rapid.designsafe-ci.org)



NSF Award #1611820

Joseph Wartman, PI





Established: 2018

[converge.colorado.edu](http://converge.colorado.edu)

Identifying,  
Connecting,  
and  
Coordinating  
Researchers

Encouraging  
the Ethical  
Conduct of  
Research

Promoting  
Convergence  
Research

## Resources

Part of the mission of CONVERGE is to accelerate the training and mentoring of a diverse next generation of natural and disaster researchers. To align with our mission, we are developing free, online training modules and a series of briefing sheets and check sheets to help guide extreme events research.



TRAINING MODULES



BRIEFING SHEETS



CHECK SHEETS

## COVID-19 Global Research Registry for Public Health and Social Sciences

The COVID-19 pandemic underscores the urgent need for coordination, collaboration, and information-sharing among researchers worldwide. We hope those who are studying the human and societal impacts of this crisis will join this effort to build a global registry for public health and social science research.

Researchers are invited to [register their COVID-19-related project here](#). Registered projects should be focused on topics related to the social and behavioral consequences, policy responses, educational and economic impacts, and public health implications of COVID-19. The form takes approximately 10 minutes to complete. The form is currently available in English, [French](#), [Spanish](#), and [Mandarin Chinese](#).



Sharing your information will help:

- Highlight novel public health and social science research initiated in response to COVID-19
- Expand opportunities for research collaboration and reduce duplication of efforts
- Identify unmet research needs
- Create possibilities to [share and publish](#) research instruments, data collection and ethics protocols, and data
- Set a comprehensive social science research agenda

## Data Publication

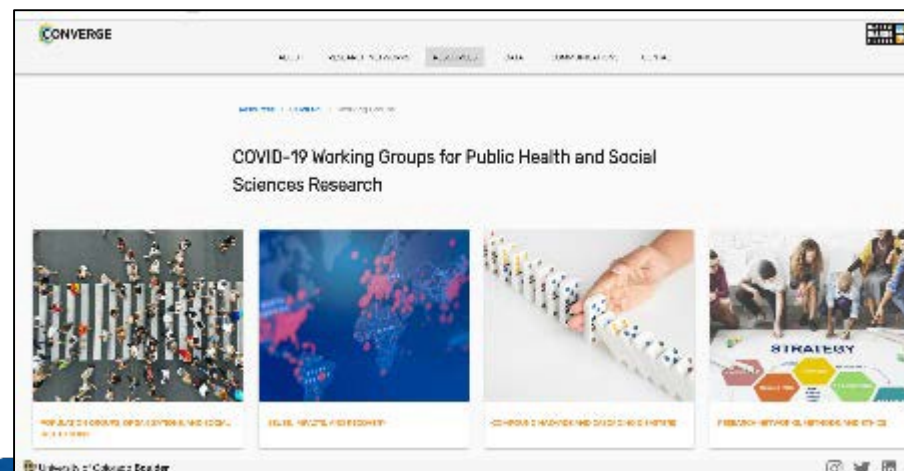


**DesignSafe** is the web-based cyberinfrastructure platform for the national science-funded natural hazards engineering research infrastructure (NSF-NHERI) community. Headquartered at the University of Texas at Austin, DesignSafe provides core cyberinfrastructure computational tools needed to manage, analyze, and publish critical data for natural hazards research. The DesignSafe cyberinfrastructure supports shared research and data management, and data collection.

Since its launch in 2010, DesignSafe has been a key component of the NSF-NHERI community. DesignSafe has been a key component of the NSF-NHERI community. DesignSafe has been a key component of the NSF-NHERI community.

The DesignSafe community has been a key component of the NSF-NHERI community. DesignSafe has been a key component of the NSF-NHERI community. DesignSafe has been a key component of the NSF-NHERI community.

NSF Award #1841338





# CONVERGE CAPABILITIES

## Research Networks

Seven Extreme  
Events Research  
Networks

## Resources

Training modules  
EE research  
checksheets  
Instruments

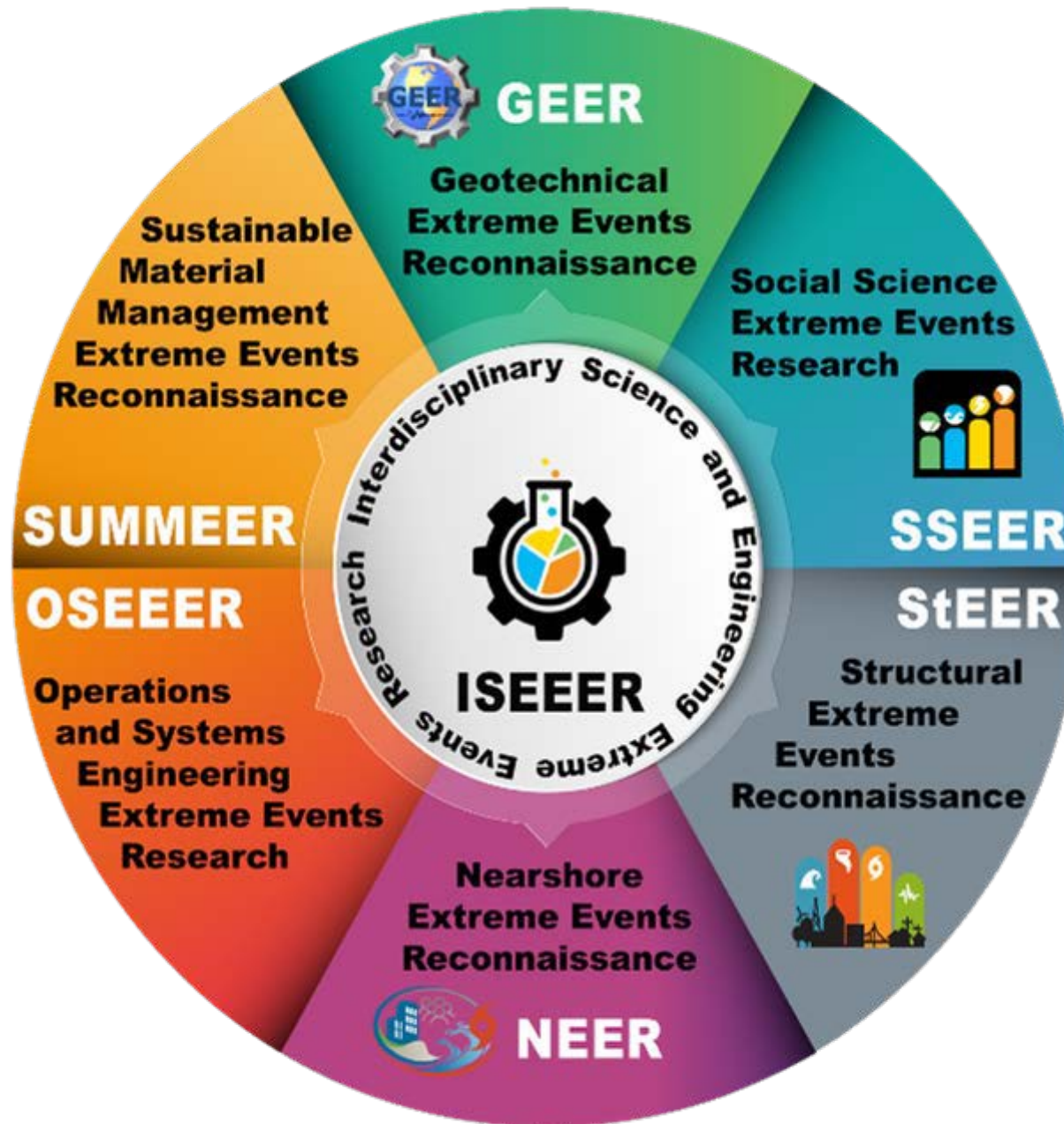
## Data

Mobile  
applications for  
SS and IS data  
collection

## Communications

Webinars and  
forums to connect  
and educate







# CONVERGE Leadership Corps



For the first time, academic hazards-focused, disciplinary and interdisciplinary communities are working together on a large scale to advance:

- research coordination
- ethical best practices
- scientific agenda setting
- systematic data collection
- data sharing and publication

