



# *Harvesting the Scientific Investment in Prevention Science to Promote Children's Cognitive, Affective, and Behavioral Health: A Workshop*

Frances M. Harding  
Director

SAMHSA's Center for Substance Abuse Prevention

IOM Forum  
June 16, 2014  
Washington, DC



# Prevention is Part of Behavioral Health



- ✓ Universal
- ✓ Selective
- ✓ Indicated

- Epidemiology
- Overlapping problems
- Levels of risk
- Levels of intervention
- Collaborative solutions
- Cultural competence
- Evidence-based practices

# Evolution of Prevention



**Developing**



**Data-driven**



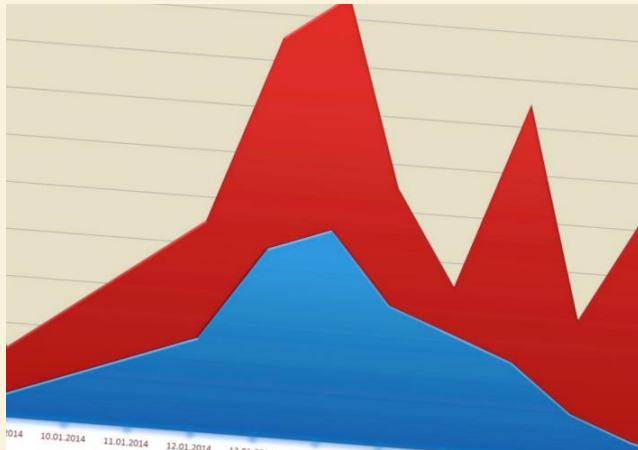
**Linked**

**Substance abuse prevention has become broader and more exact.**

# Evidence-Based Practices: Development and Implementation

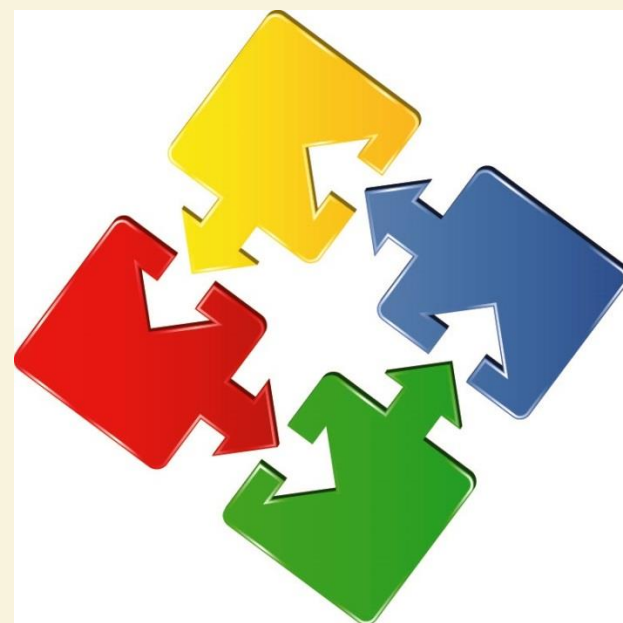


- Readiness
- Fidelity
- Community input
- Adaptability
- Ability to monitor
- Emerging opportunities



# Moving Toward Healthcare Integration

- Feasible models require teamwork across sectors.
- Involving state and community voices is vital.
- Collaborative and integrated practices must include prevention.
- One size does not fit all.
- EBPs must be developed/tested.
- Integration is a long-term process.



# Making Integrated Solutions Work





# HHS Behavioral Health Coordinating Committee

Subcommittees include:

- Early intervention
- Prescription drug abuse
- Teenage drinking
- Integrating behavioral health care with primary care
- Behavioral health communications
- Marijuana



# Questions?

