
Powering the Possible for Pediatric Cancer



Video





August Calhoun, Ph.D.

Vice President,
Dell Healthcare & Life Sciences Services

Spyro Mousses, Ph.D.

Vice President,
TGen Office of Innovation;
Director & Professor,
Center for BioIntelligence

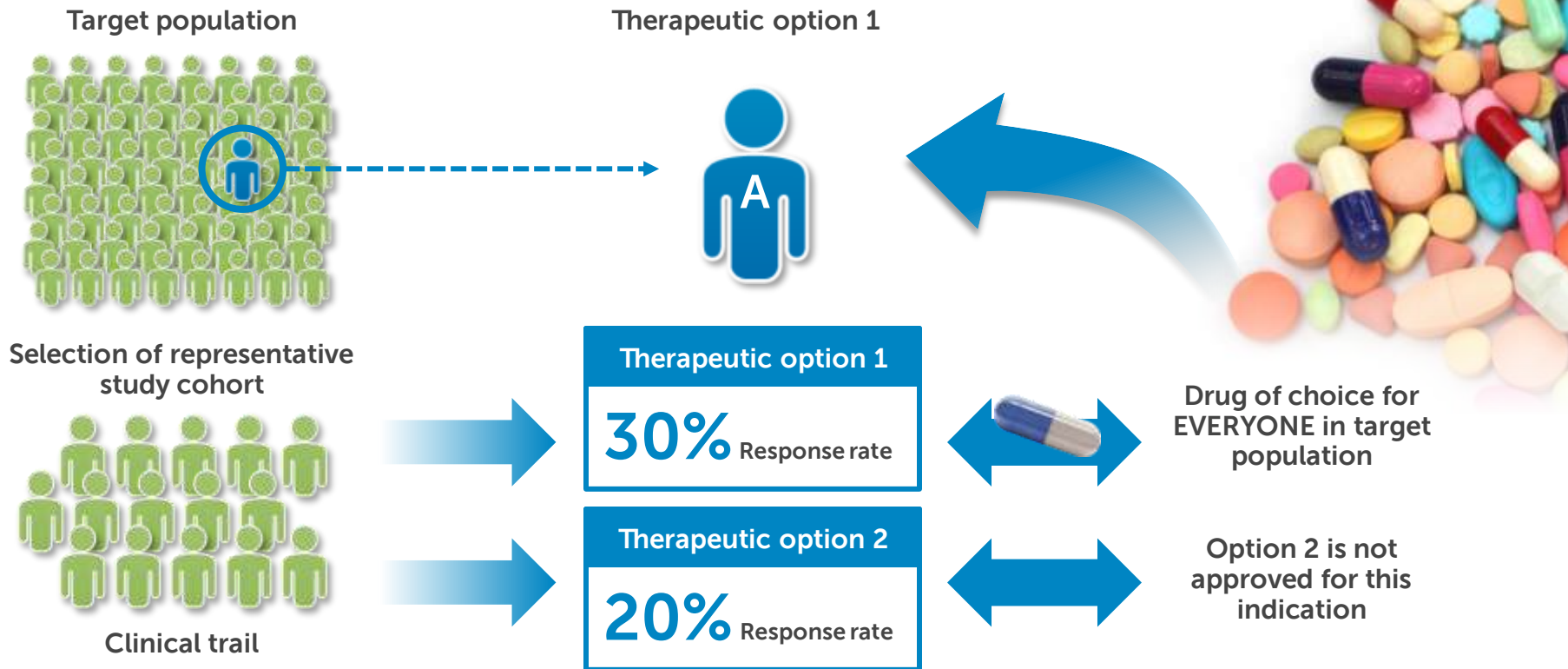
Powering the Possible



Evidence based medicine

Information enabled medicine

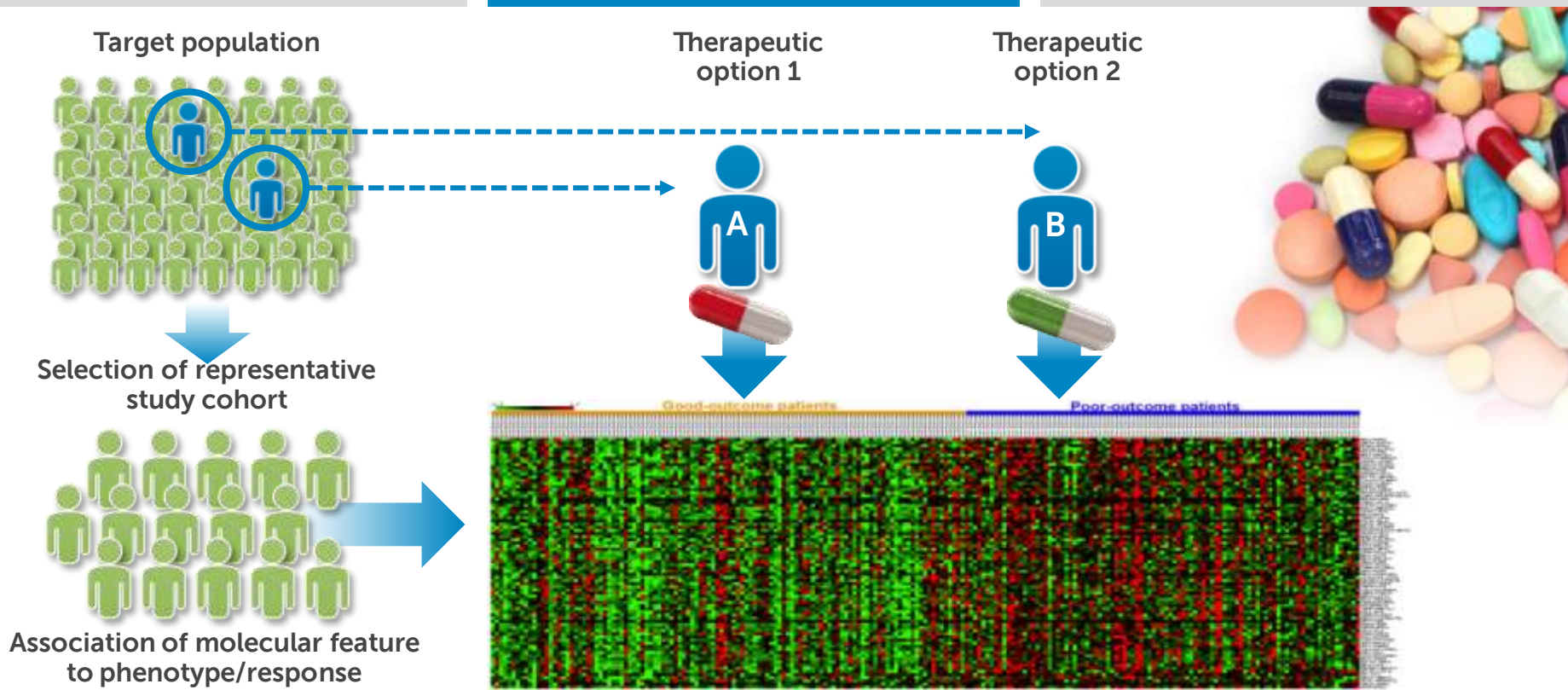
Intelligence based medicine



Evidence based
medicine

Information enabled
medicine

Intelligence based
medicine



Evidence based
medicine

Information –enabled
medicine

Intelligence based
medicine

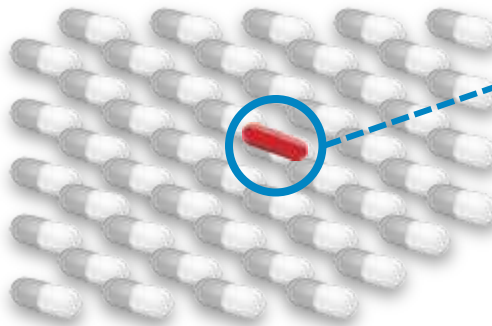
N=1



Molecular
profiling

Individualized
Information

100's of options



Selection of an
individualized
option

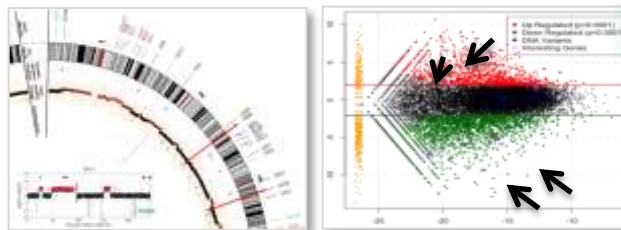
Intelligent
interpretation
(understanding)

The key question is:
How do we do that ?



Alignment of **Molecular** **technologies,** informatics and knowledge

Characterize genomic aberrations



Prioritize biological information

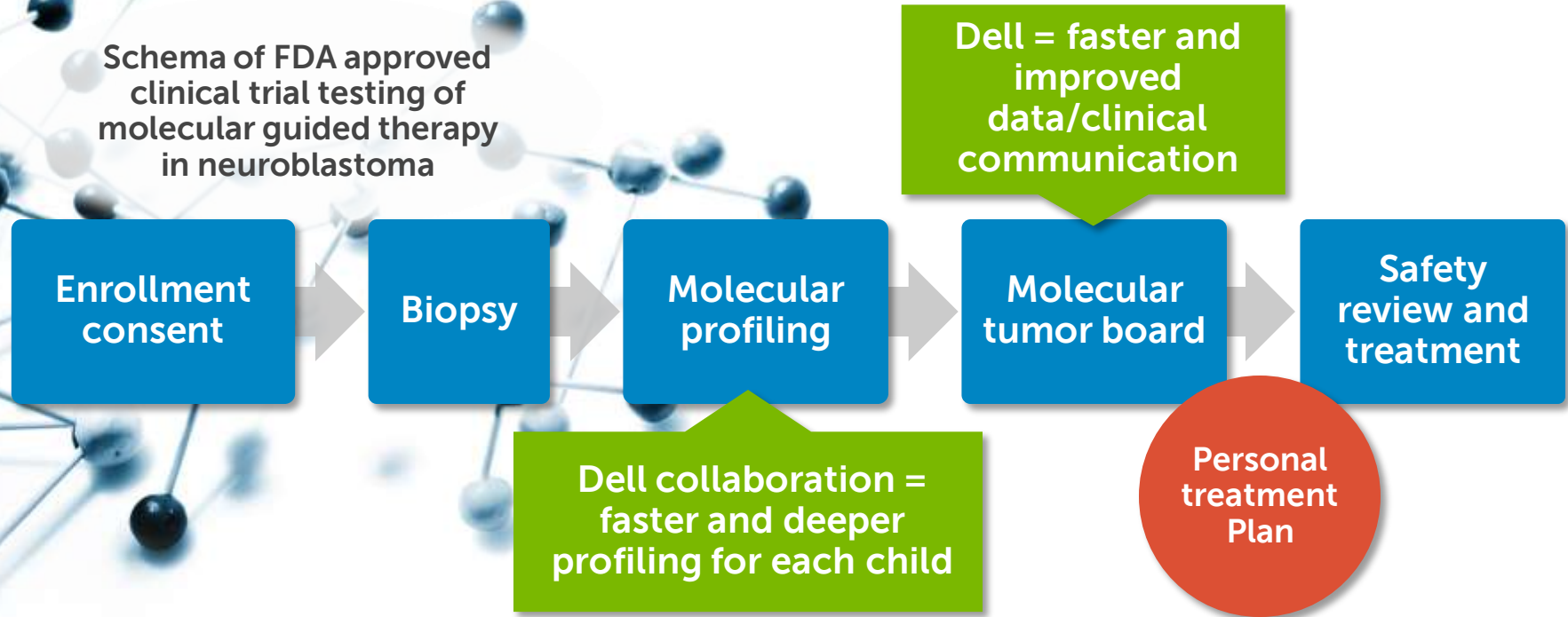


KEY: integrate target discovery with a drug knowledge

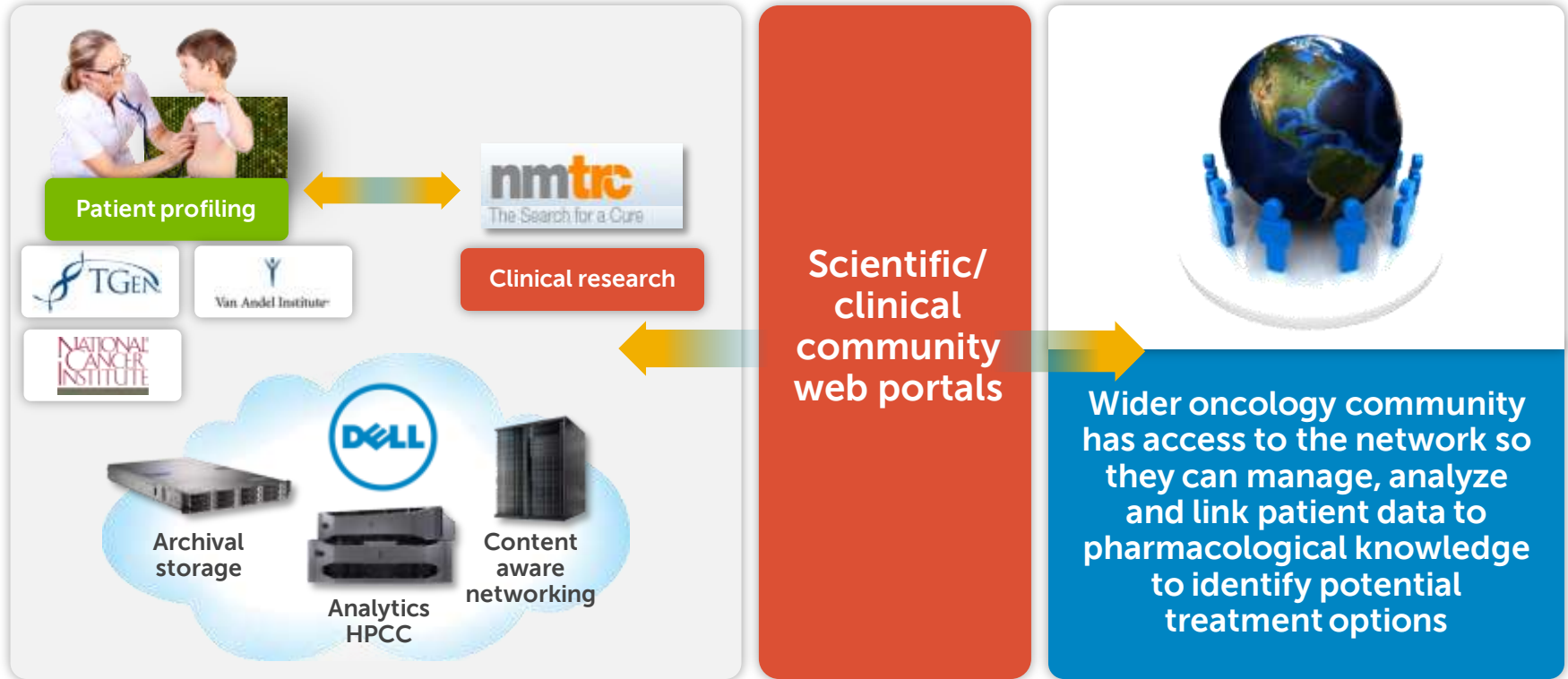


First ever clinical trial using Molecular guided individualized therapy in pediatric cancer

Schema of FDA approved clinical trial testing of molecular guided therapy in neuroblastoma



Our vision: provide a system that effectively links the pediatric oncology community



Molecular guided therapy in relapsed NeuroblastomaThe impact for a patient



Therapy led to decrease in tumor burden and
coming off all narcotics,
no more pain!!

Cloud

technology helps
identify personalized
treatment strategies
for children with
neuroblastoma*

*Neuroblastoma strikes one in 100,000 children annually, usually before the age of 5, and it is responsible for one in seven pediatric cancer deaths

Dell's Powering the Possible for pediatric cancer is a multi-year, multi-million dollar commitment of technology, funds and employee engagement to support innovative pediatric cancer treatment programs globally



Increases computation and
collaboration capacity by
1,200%

Reduces mapping and analysis from
months to
days

Expands participation
from a few children to
**hundreds and then
thousands**

Powering the Possible

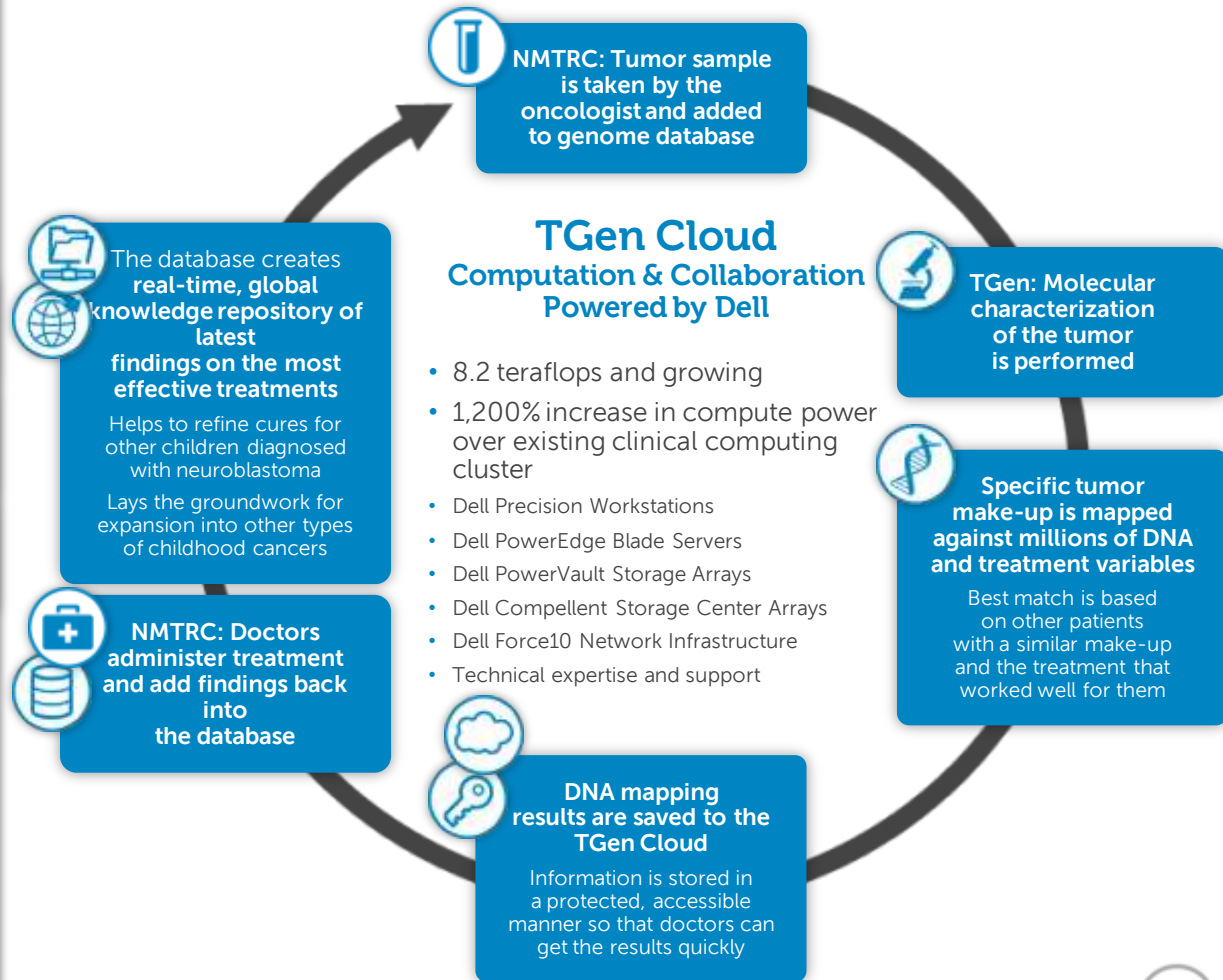


Simplifies interaction and info sharing between scientists and oncologists so targeted treatments can begin faster

Manages 200 billion data points generated **per patient**

Reduces mapping and analysis from months to **days**

Creates a **real-time, growing** body of knowledge



Thank You

