

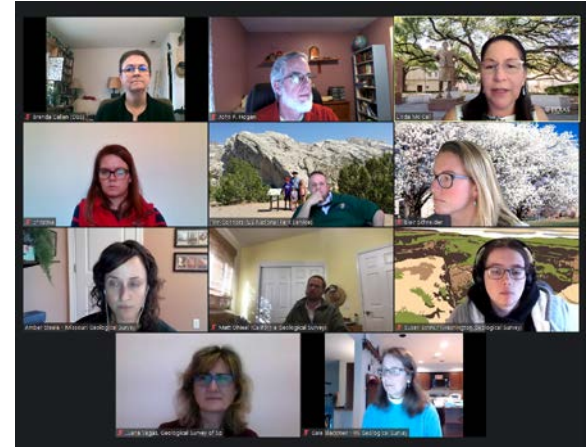
Group 6B: State Surveys

Gale Blackmer, Pennsylvania Geological Survey
John Hogan, Missouri University of Science and Technology
Amber Steele, Missouri Geological Survey
Linda Ruiz McCall, Texas Bureau of Economic Geology
Blair Schneider, Kansas Geological Survey
Juana Vegas, Spanish Geological Survey
Brenda Callen, California Geological Survey
Christina George, Wyoming Geological Survey
Matt O'Neal, California Geological Survey
Susan Schnur, Washington Geological Survey
Tim Connors, US National Park Service

Summary of Focus Group Discussions

We focused our discussions on:

- **Inventorying sites - this is the first step!**
- **The role of state surveys in inventorying sites;**
- **Having our mappers identify sites when in the field;**
- **How we find the time/staff/funds to do this work;**
- **Discussion of the local-regional-national-international framework.**



Challenges that state surveys face

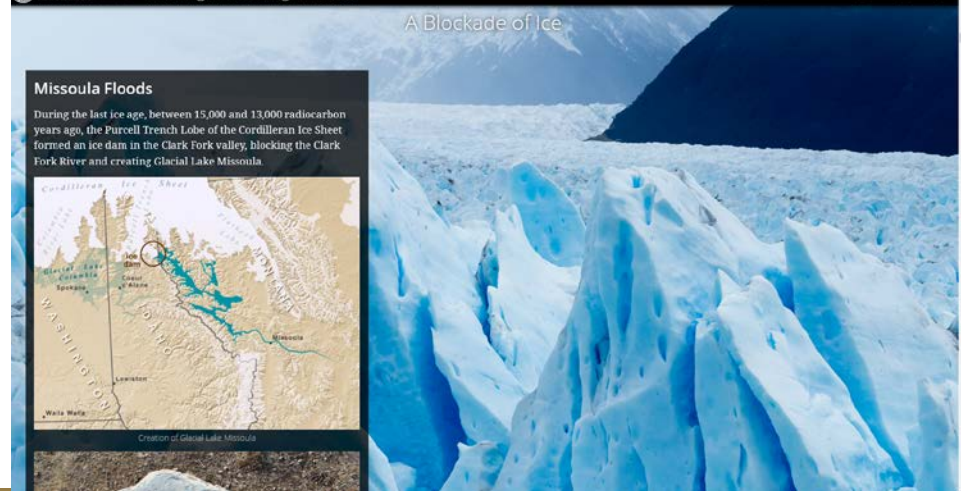
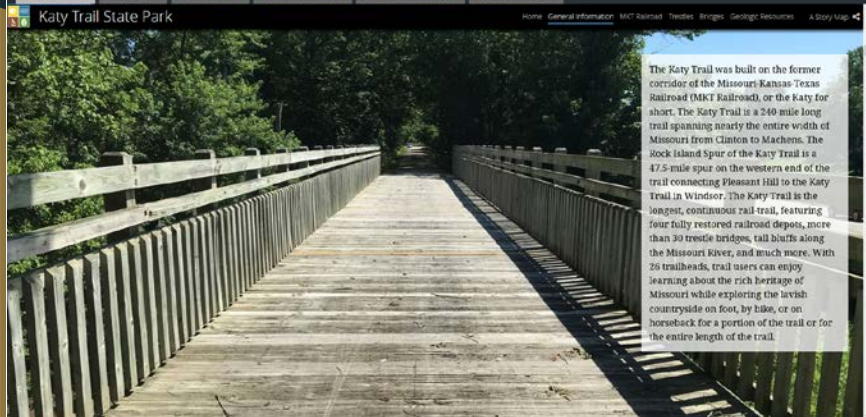
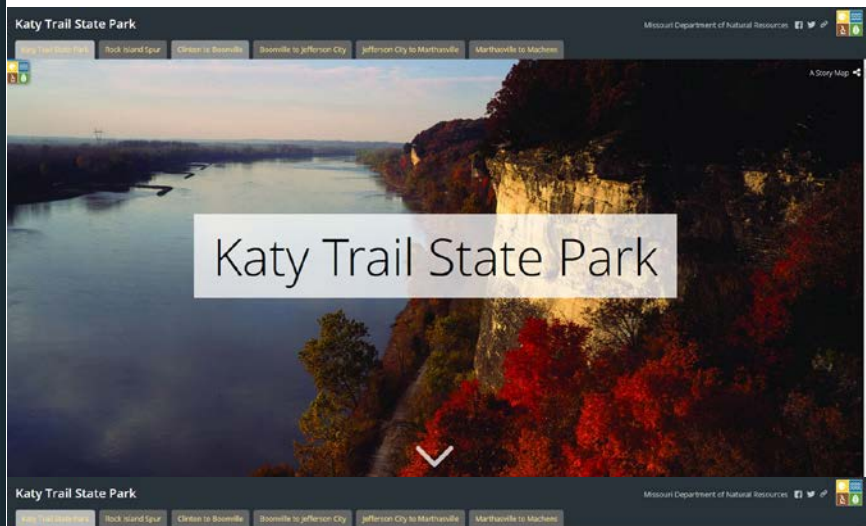
- Funding
- Time and Staff
- There is little awareness among state surveys about the geoheritage site projects - lack of shared terminology.
- Increasing communications between the state surveys, state geological associations and international surveys/associations.
- Diverse audiences - ensuring we can communicate with general public and the geoscience community.

Advantages for State Surveys

- Collaborations with other local agencies are available (Parks and Tourism, NPS, Fish and Wildlife, local non-profits, etc).
- We already have geoheritage sites or have been doing this work - just haven't necessarily called it this!
- We are connected to other state geology groups or associations.
- We have a huge inventory of samples, photos, slides, etc. already.
- Preservation of sites for now and for the future.
- We can help people understand the geology of the area.

Big Ideas - Story Maps

- Story Maps are a great tool for sharing information and are accessible.
 - Can link in different levels of geoscience understanding through the maps.
- Great alternative for sites that are difficult to access or are unsafe.
- Can be put together pretty quickly, but people expect higher quality content!
 - Should be willing to invest some time in this.
- Can work with undergraduates or other volunteers to create these.
 - Need staff who can work on this and oversee the quality of these projects.
- Site preservation or protection.
 - Need to ensure that site localities are protected as story maps raise awareness to them.



Big Ideas - AASG Working Group

AASG should form a committee for state surveys to collaborate on developing geoheritage sites together:

- Amplifies legitimacy for the geoheritage effort.
- Creates opportunity to pool funds together for this work.
- This group could establish common language and also oversee an inventory of state sites. Don't have to recreate the wheel - [NPS already has a framework for gathering information.](#)
- Provides a routine time to work specifically on these projects.
- Could establish metrics to evaluate the success or impact of the geoheritage sites.
- Create a FAQ page for creating a geoheritage site.

Big Ideas - Funding Opportunities

There are funding opportunities for state surveys to collaboratively pitch proposals:

- NSF (Geopaths, Research Traineeship Programs, Postdoctoral Funding, REU/RET, conference proposals)
- Broader impacts portions of all federal agency grants
- Individual state fundraising initiatives or partnering with local non-profit agencies
- Geoscience societies
- Industry sponsorships
- NPS Scientists in the Parks
- State tourism industry
- Partnering with other state agencies (DOT, DWPT, etc.)