

Philanthropy in Support of Science

Harvey V. Fineberg, MD, PhD

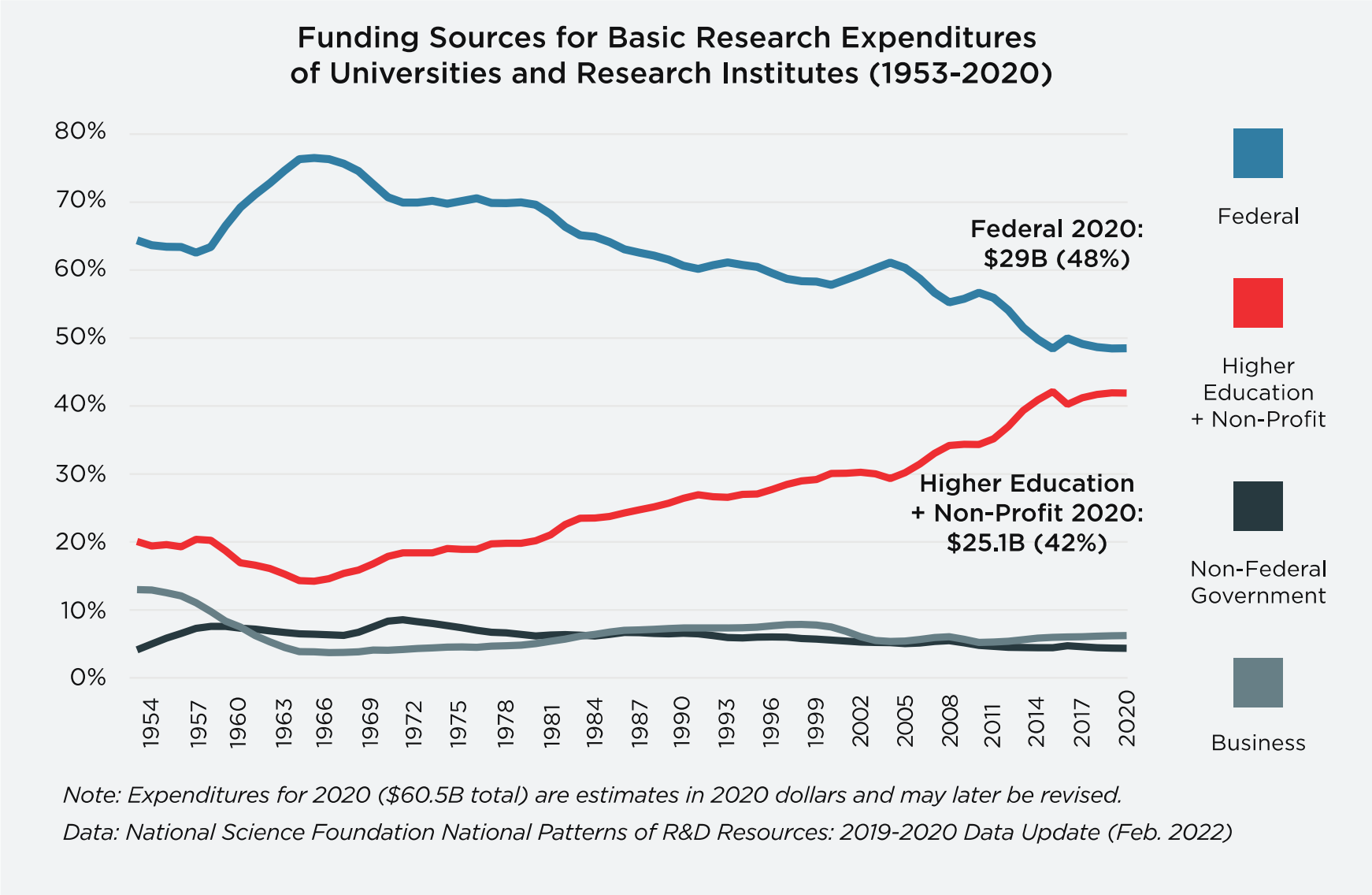
President

Gordon and Betty Moore Foundation

Institutions for Science

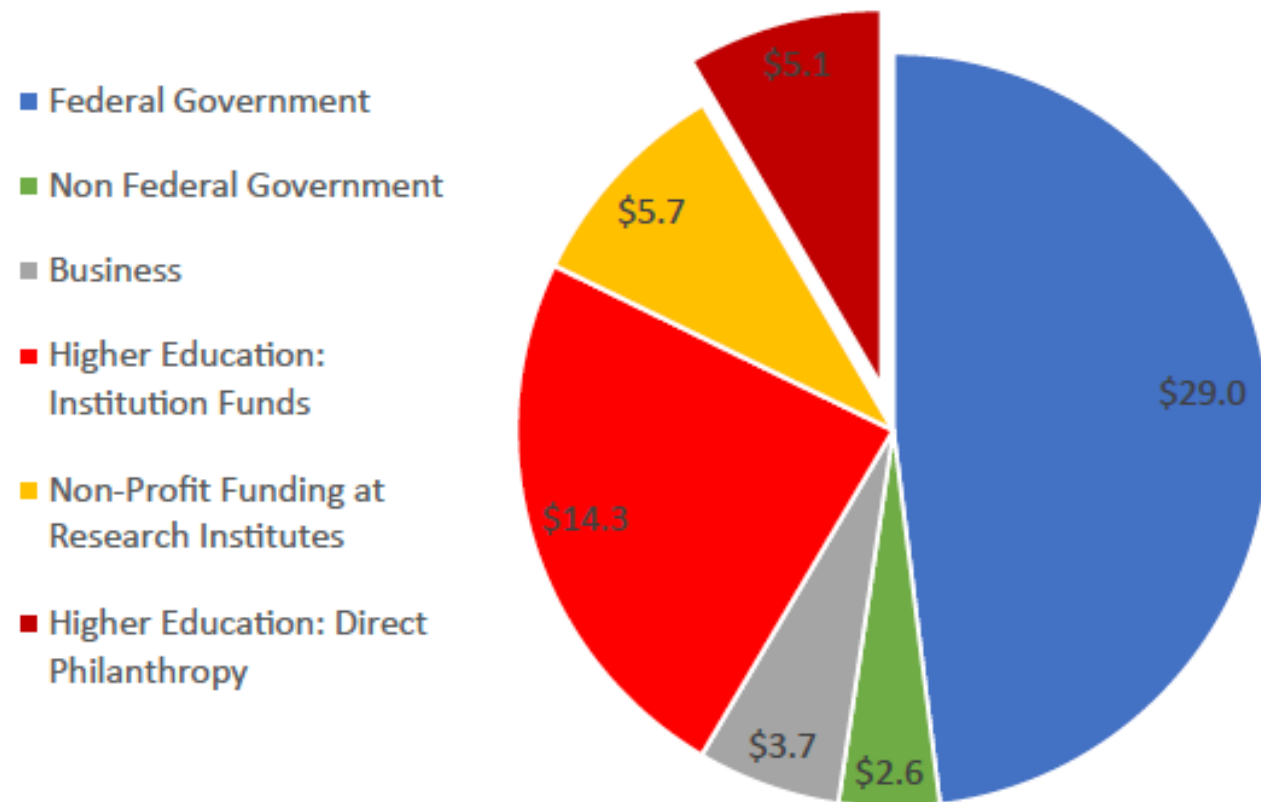
- Carry out scientific research
 - Universities
 - Independent institutes and laboratories
 - Government and industry labs
- Guide, regulate, and advocate for science
 - National Academies
 - Professional and Civic Associations
 - Regulatory bodies
- Fund science
 - Government
 - Industry
 - Philanthropy

Philanthropic Support for Scientific Research in the U.S.



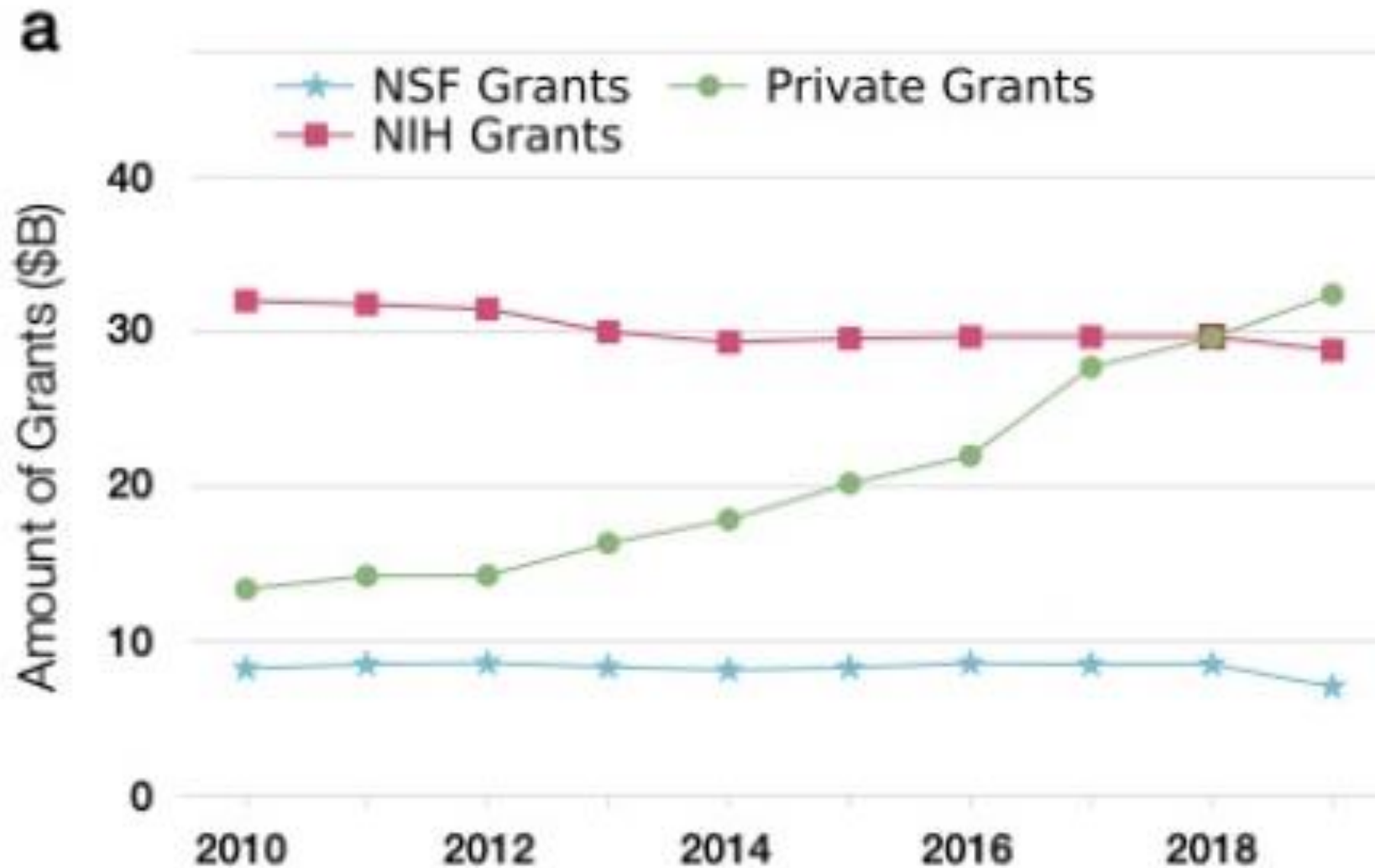
Philanthropic Support for Scientific Research in the U.S.

Source of Funds for Basic R&D Expenditures at Universities and Research Institutes (2020 estimate; current billions of dollars)



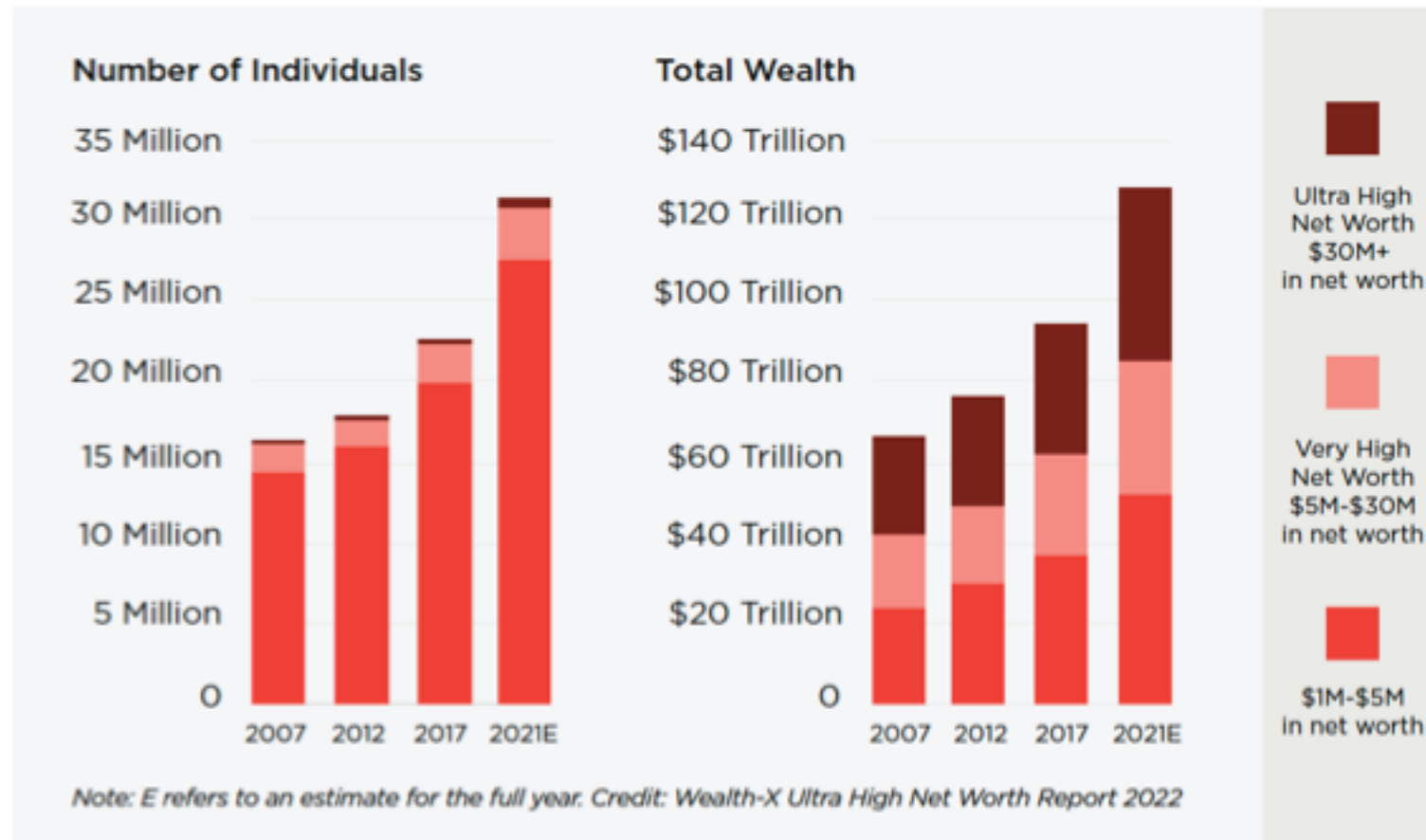
Data: NSF National Patterns of R&D Resources: 2019-2020 Data Update (February 2022)

Philanthropic Support for Scientific Research in the U.S.

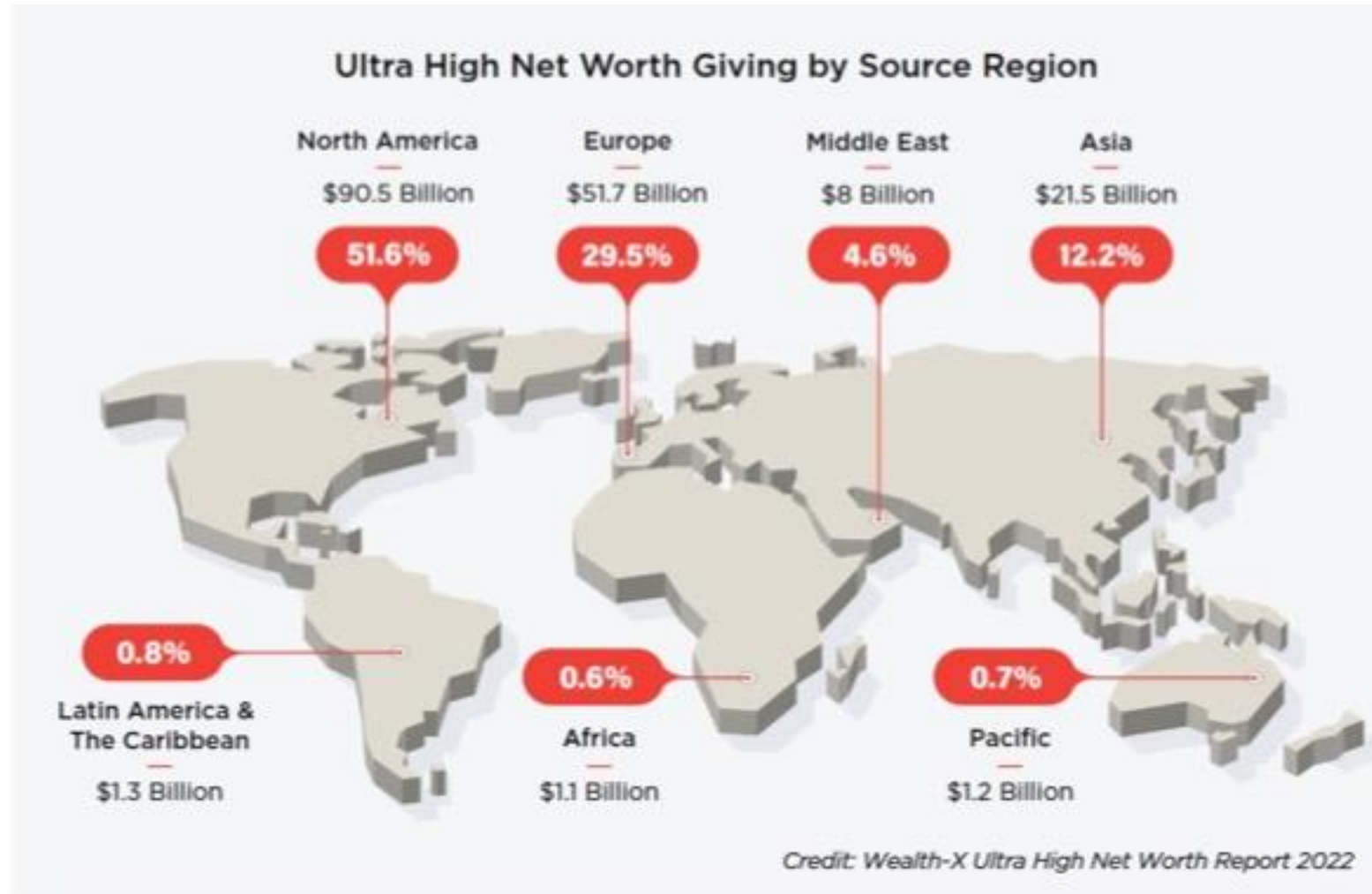


Source: Shektman LM, Gates AJ, Barabási AL. Philanthropic support for scientific research in the U.S. arXiv:2206.1066v1

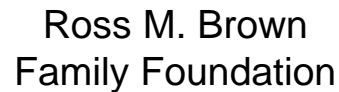
Rising Global Wealth and Philanthropic Potential



Global Giving



Science Philanthropy Alliance Members

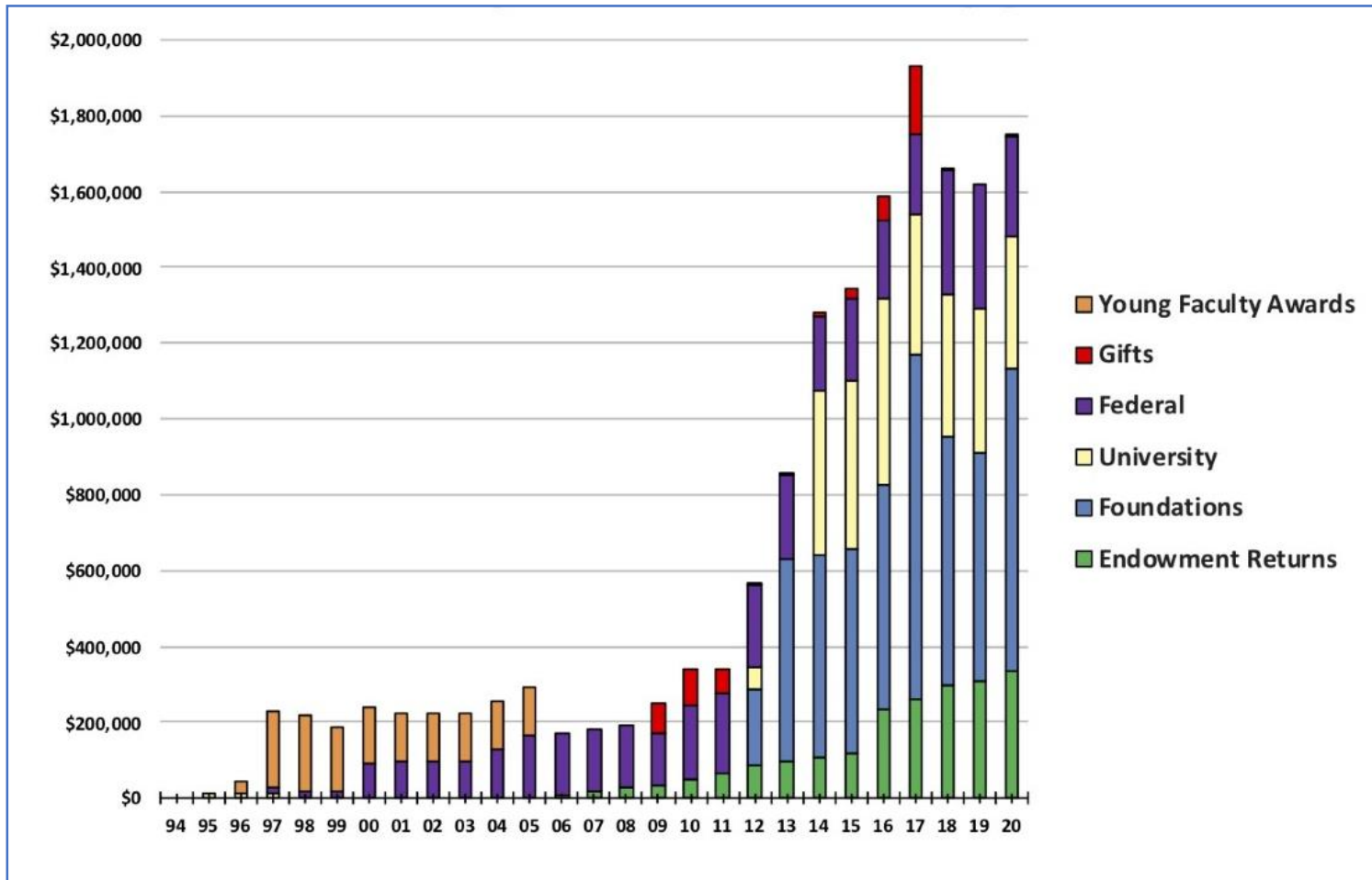


Comparative Advantages of Philanthropy for Science

- Accelerate high-risk, unproven research
- Operate with flexibility and nimbleness
- Embrace curiosity-driven and problem-solving research
- Leverage additional funding
- Seed new research and fill funding gaps
- Work collaboratively in areas of shared interest
- Scale impact through partnerships and open science
- Invest in under-represented groups and at critical stages of careers

Investment in People and Ideas

Historical Funding Support: One Nobelist's Funding



Nobel Winners



Key Points

- Philanthropy is a large and growing source of funding for science
- Accumulated global wealth creates high potential for future philanthropy
- Philanthropy has advantages of independence, spirit of collaboration, appetite for risk, speed and agility, varied interests, and investment in people, including those from under-represented groups and at critical career stages