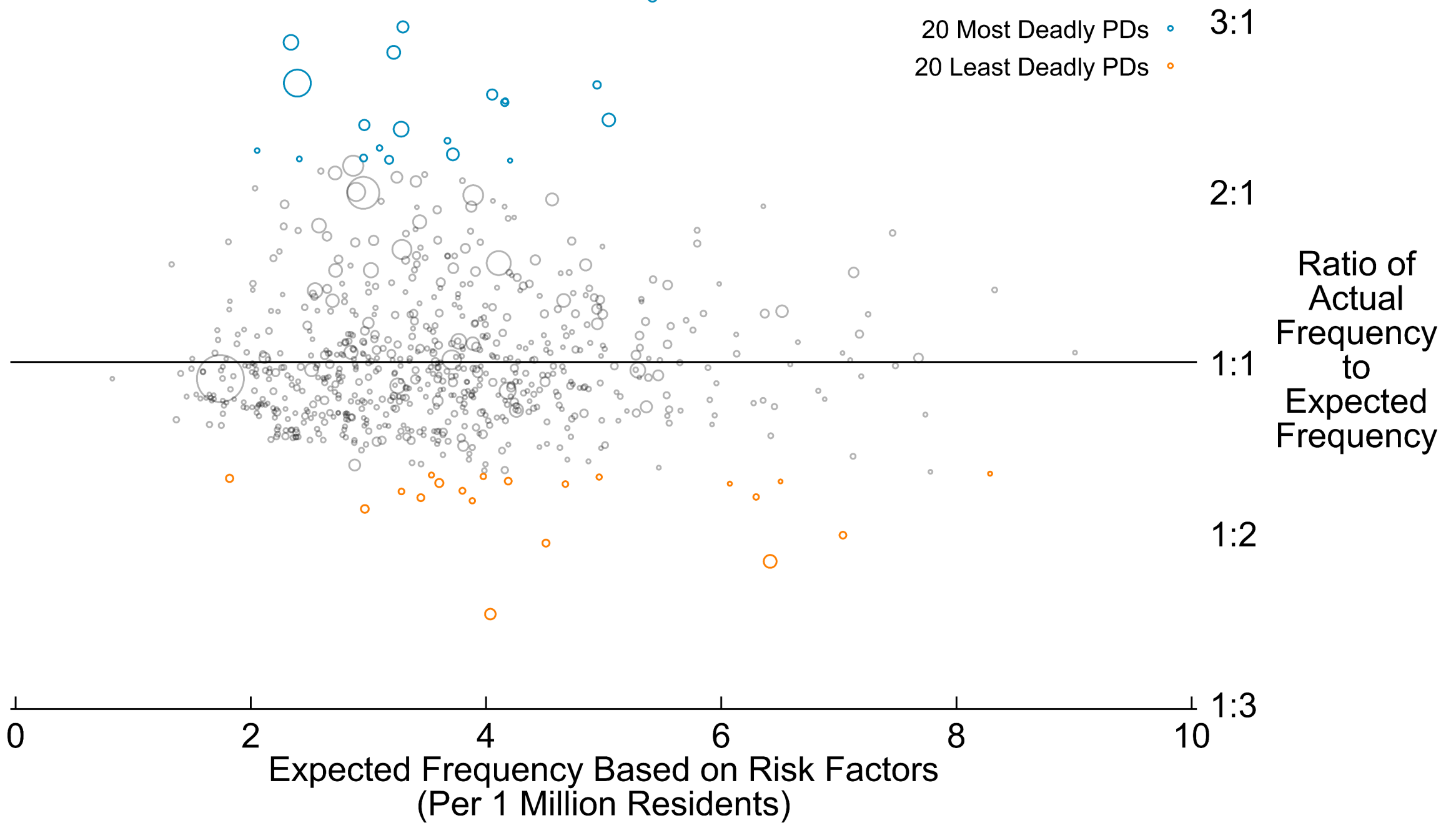
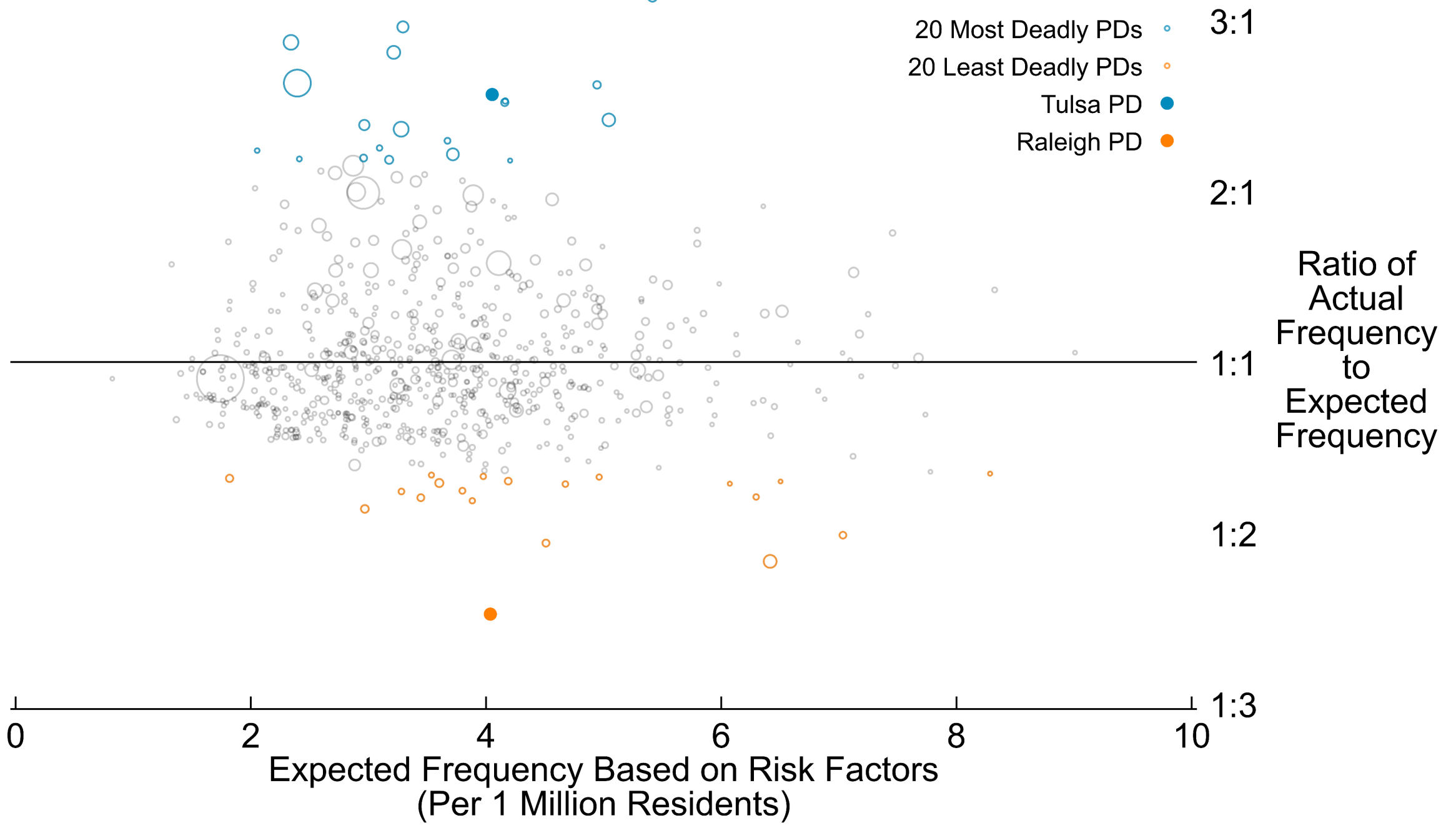


POLICE DEPARTMENT DEADLINESS: HOW THE NATIONAL DATA INFRASTRUCTURE PREVENTS US FROM MONITORING POLICE VIOLENCE

Josh Leung-Gagné

Are some police departments more or less prone to killing people under similar conditions? Which ones?





The National Data Infrastructure

- Official counts of officer-involved homicides

The National Data Infrastructure

- ~~Official counts of officer-involved homicides~~
- Journalist-led databases: Fatal Encounters, Mapping Police Violence, WaPo

The National Data Infrastructure

- ~~Official counts of officer-involved homicides~~
- Journalist-led databases: Fatal Encounters, Mapping Police Violence, WaPo
- Repeated surveys of agencies
 - Uniform Crime Reports (UCR)
 - Law Enforcement Officers Killed in Action (LEOKA)
 - Law Enforcement Management and Administrative Statistics (LEMAS)
 - Census of State and Local Law Enforcement Agencies (CSLLEA)

The National Data Infrastructure

- ~~Official counts of officer-involved homicides~~
- Journalist-led databases: Fatal Encounters, Mapping Police Violence, WaPo
- Repeated surveys of agencies
 - Uniform Crime Reports (UCR)
 - Law Enforcement Officers Killed in Action (LEOKA)
 - Law Enforcement Management and Administrative Statistics (LEMAS)
 - Census of State and Local Law Enforcement Agencies (CSLLEA)
- National Officer-Involved Homicide Database (NOIHD)

Data infrastructure challenges

- Getting accurate counts of police homicides

Data infrastructure challenges

- Getting accurate counts of police homicides
- Mapping demographics to jurisdictions

Data infrastructure challenges

- Getting accurate counts of police homicides
- Mapping demographics to jurisdictions
- Counting deaths, not deadly force

Data infrastructure challenges

- Getting accurate counts of police homicides
- Mapping demographics to jurisdictions
- Counting deaths, not deadly force
- Controlling for risk

Data infrastructure challenges

- Getting accurate counts of police homicides
- Mapping demographics to jurisdictions
- Counting deaths, not deadly force
- Controlling for risk
- ...with aggregate data

Data infrastructure challenges

- Getting accurate counts of police homicides
- Mapping demographics to jurisdictions
- Counting deaths, not deadly force
- Controlling for risk
- ...with aggregate data
- ...that was collected via surveys of agencies with different working definitions

Data infrastructure challenges

- Getting accurate counts of police homicides
- Mapping demographics to jurisdictions
- Counting deaths, not deadly force
- Controlling for risk
- ...with aggregate data
- ...that was collected via surveys of agencies with different working definitions
- ...and agencies aren't the best at compliance

Data infrastructure challenges

- Getting accurate counts of police homicides

- Mapping demography

- Counting deaths

- Controlling for

- ...with aggregation

- ...that was collected

- ...and agencies

3 Primary Problems:

- Agency discretion
- Aggregation of incidents
- Deaths not deadly force

...with aggregation
...that was collected
...and agencies

URSUS: California's use of force incident reporting database

- State-mandated reporting for a subset of use of force incidents
 - Results in serious bodily injury or death of anyone involved (including officer)
 - Discharge of a firearm
- Incident-level data by zip-code, date, and agency
- Officer and non-officer characteristics
- Incident characteristics

Thank you!

Please feel free to reach out by emailing
jgagne@stanford.edu