

Transportation Research Board: Mobility Management Study

King County Metro

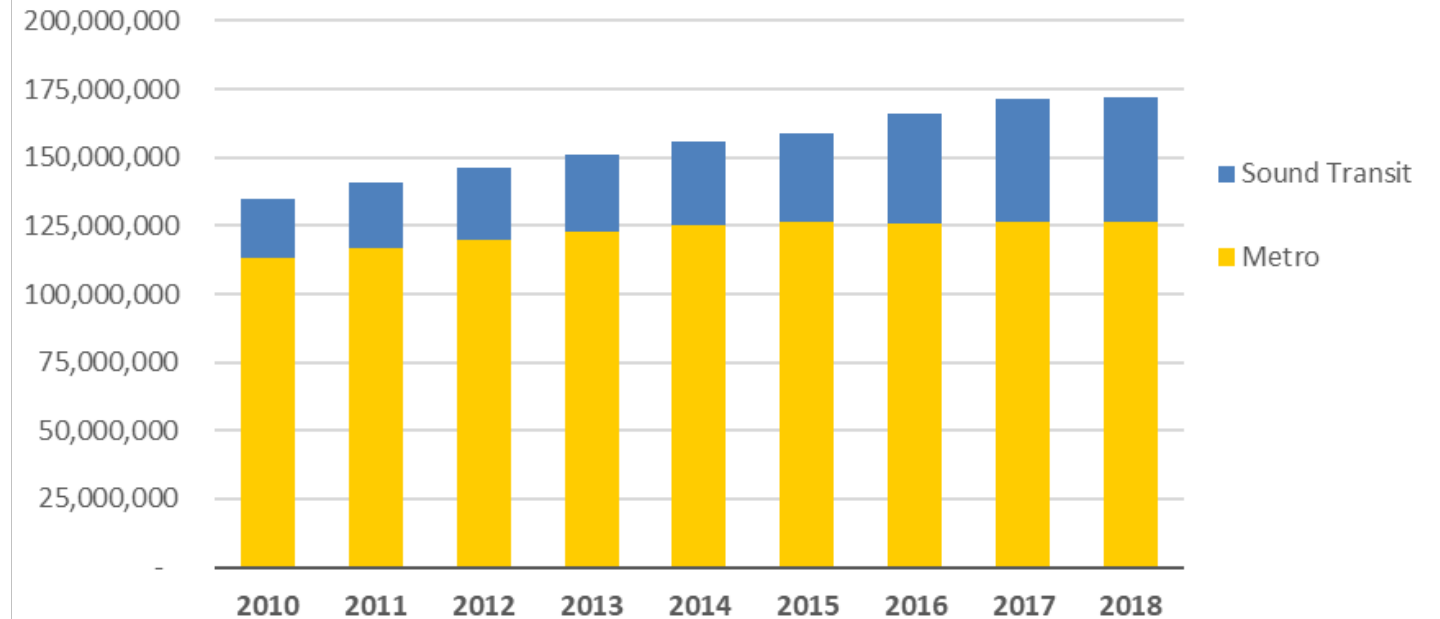
October 29, 2019



Metro ridership remains steady

- Fifty percent of downtown Seattle's workforce currently takes transit to their jobs each weekday
- Total transit boardings have increased every year since 2010
- Sound Transit's increase due to Link expansion to Capitol Hill and UW in 2016
- August ridership down -1% year-over-year on Metro buses

Annual Boardings in King County



Sound Transit = Link, Sounder, and ST Express

Metro = fixed-route bus, Access, Water Taxi, vanpool

Factors affecting ridership

Rise of ride-hailing

- Uber and Lyft rides account for about 100K trips in King County on a weekday (about ¼ of Metro daily bus ridership)
- Uber began service in Seattle in 2013
- Downtown is a large generator of Uber and Lyft trips

Regional Growth Shifts

- New population and employment growth concentrated in dense urban centers easily served by transit and walking
- Housing in-affordability has led to the movement of low-income household to more suburban areas, primarily south King County, less well served by transit

Increasing Congestion

- Weekday average bus speeds have been decreasing since 2010
- Traffic delays are particularly intense during commute times. The AM and PM peak periods had the largest decrease in average bus speed

Where Uber, Lyft rides are concentrated

More than 40 percent of all Uber and Lyft rides in the Seattle region happen in the city's most congested areas: ZIP codes containing downtown, Belltown, South Lake Union and Capitol Hill.



Sources: Uber and Lyft 2018 second-quarter reports to the city of Seattle

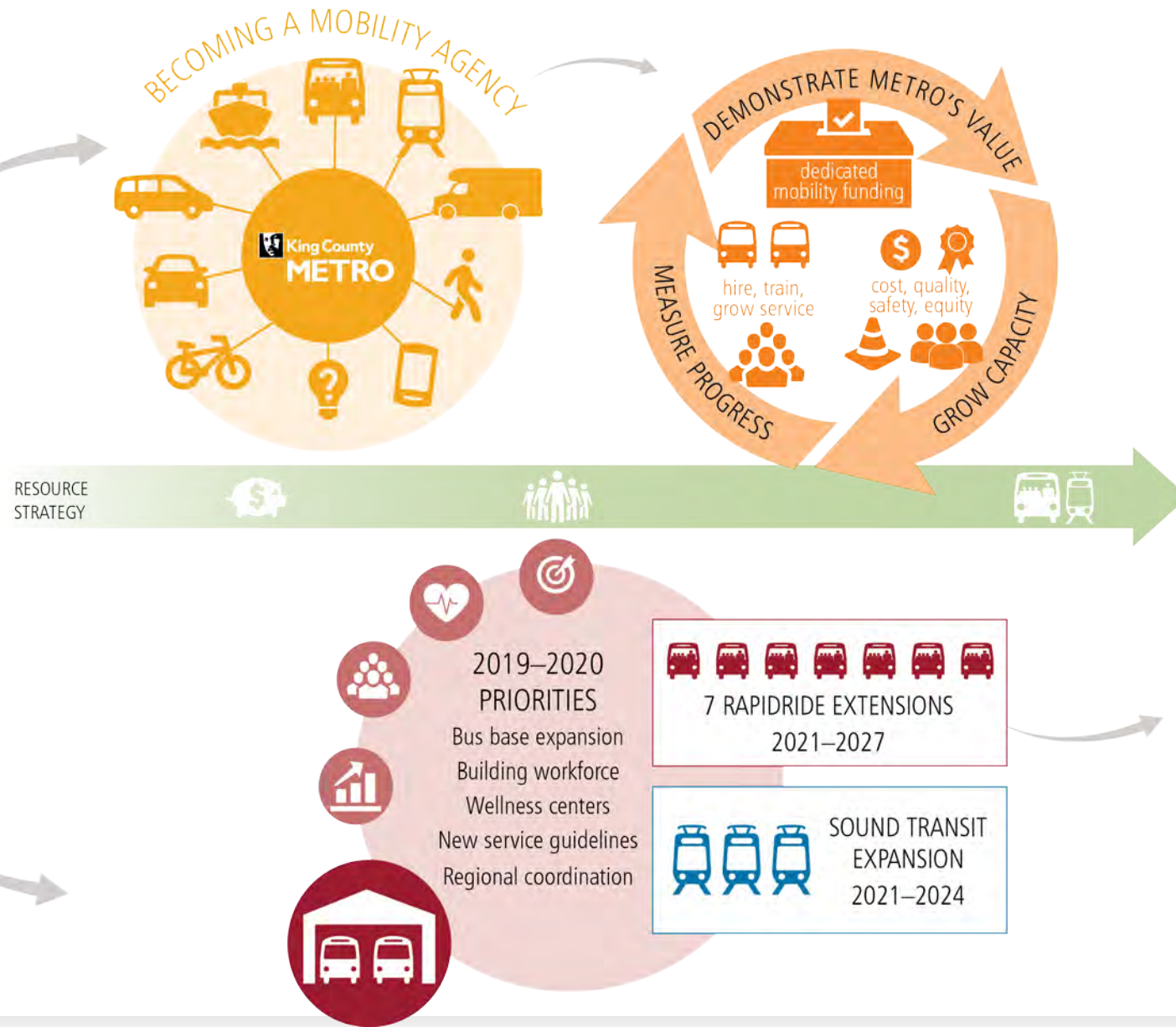
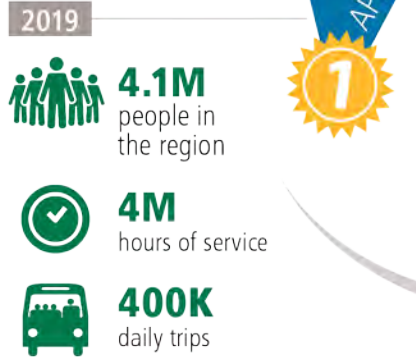
MARK NOWLIN / THE SEATTLE TIMES



Investing where
needs are the
greatest



METRO'S LONG GAME



Mobility Framework

- **Developing a mobility framework to inform how Metro allocates transit service, invests resources and updates its existing policies in the future.**
- Guiding principles will inform recommended actions to center equity & sustainability.
 - Put people first
 - Invest where needs are the greatest
 - Promote partnerships
 - Encourage accessibility
 - Improve affordability
 - Respond effectively to innovation
 - Increase sustainability
 - Support our workforce



Equality



Equity



Determinants of Equity

- Access to health and human services
- Healthy built and natural environments
- Quality education
- Family wage jobs and job training
- Early childhood development
- Economic development
- Strong, vibrant neighborhoods
- Affordable, safe, quality housing
- Access to parks and natural resources
- Equity in county practices
- Access to affordable, healthy, local food
- Equitable law and justice system
- Community and public safety
- Access to safe and efficient transportations



What do we mean by sustainability?

Climate changes threatens the health and safety of people, the economy, and environment – and priority populations bear the greatest burden.

Transportation emissions are 36% of regional greenhouse gas emissions.

The framework will consider how Metro can move more rapidly to meet the emissions reduction goals of the Strategic Climate Action Plan:

- 25% by 2020
- 50% by 2030
- 80% by 2050

Percentages are compared to 2007 baseline





Metro ► your mobility agency

Get where you need to go, when you need to—
safely, equitably, and sustainably.



Thank you!