

# PROJECTS

The Southeast Gateway for the U.S.

Ed McCarthy  
Chief Operating Officer  
May 23, 2018

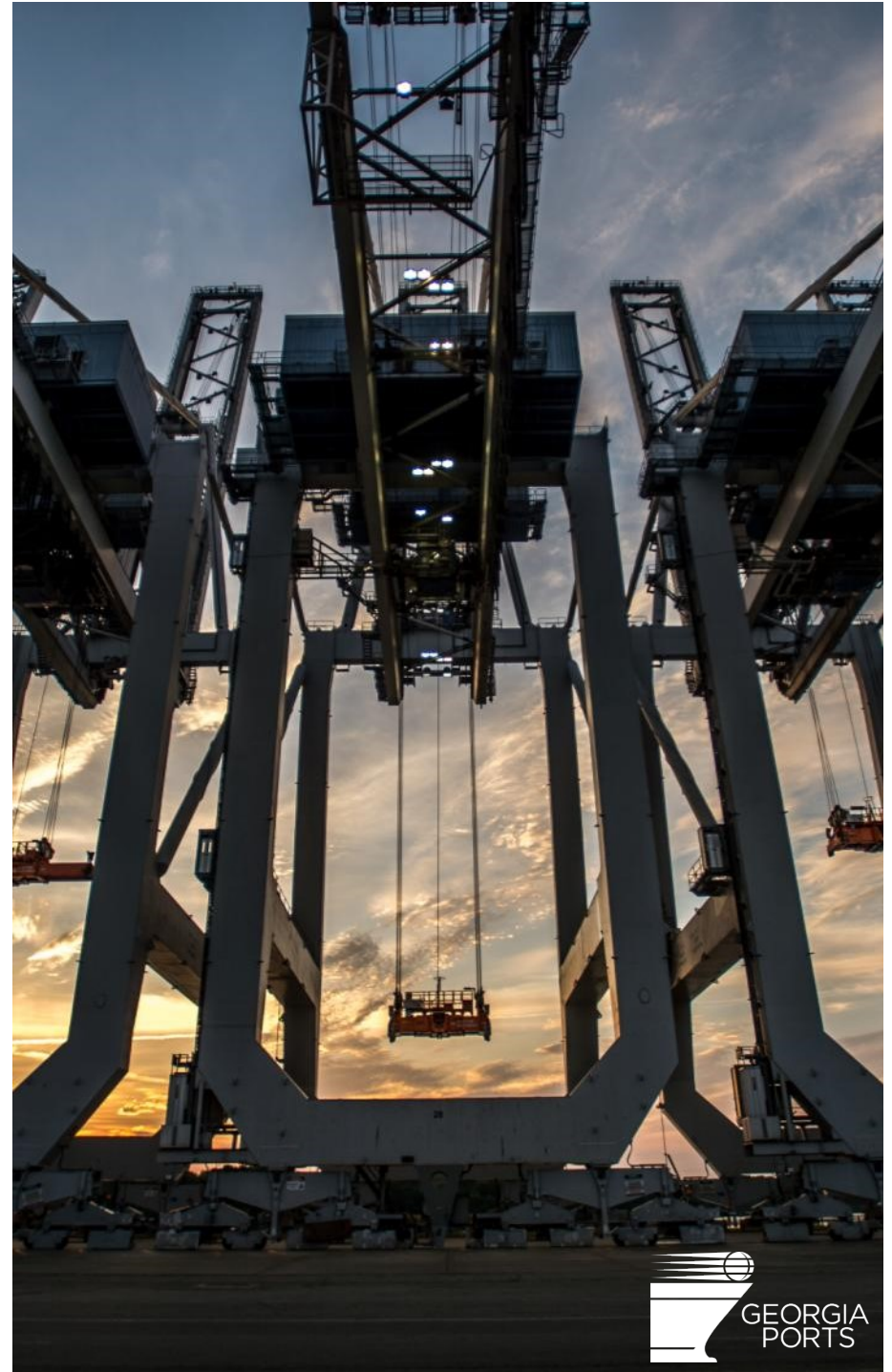


CAPITAL  
INVESTMENT  
OVER THE **PAST**  
10 YEARS: **\$1 B**

---

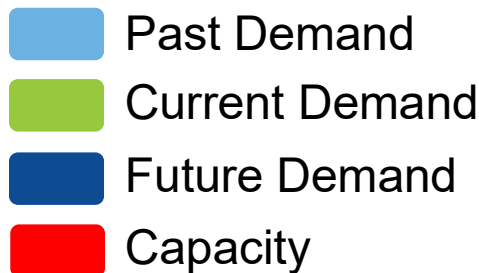
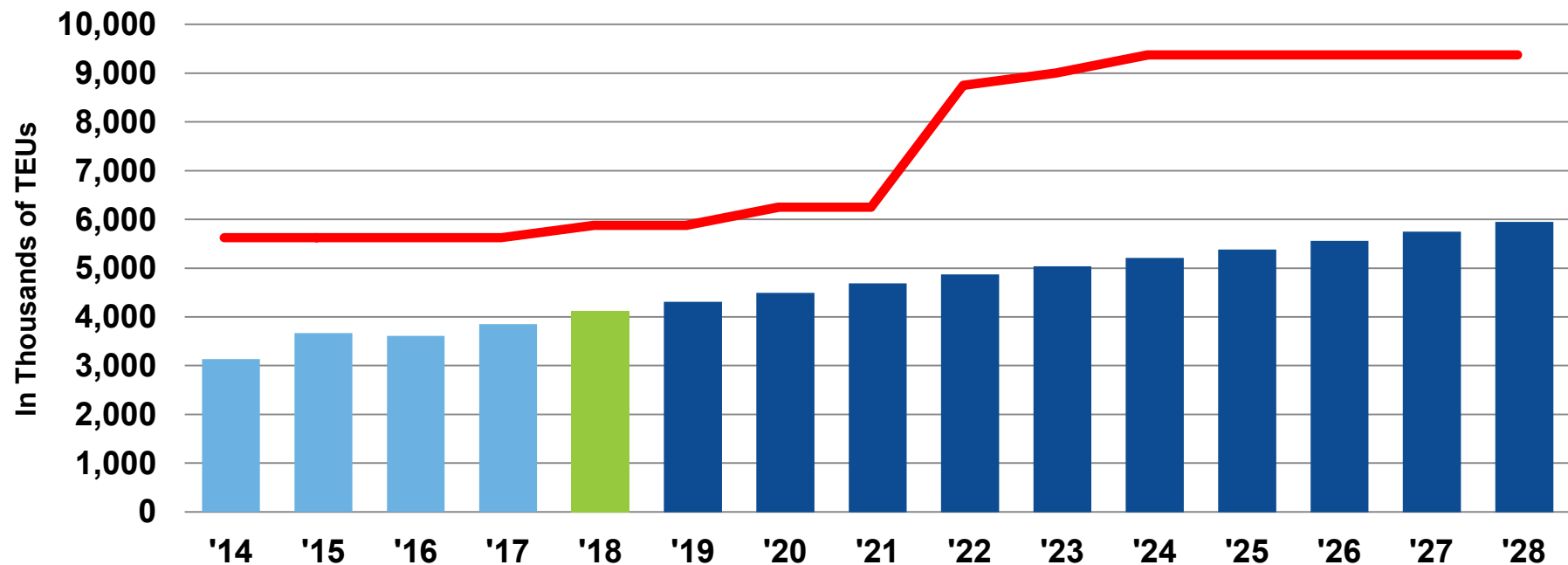
CAPITAL  
INVESTMENT  
OVER THE **NEXT**  
10 YEARS: **\$2.5 B**

\$137 M approved for FY18



# STAYING AHEAD OF THE GROWTH CURVE

We Strive to Keep Capacity Well Ahead of Demand through Long-term Planning



FY 2017 Throughput

3.85 million TEUs

FY 2028 Throughput Capacity

9.38 million TEUs

Source: GPA Marketing (loads & empties)



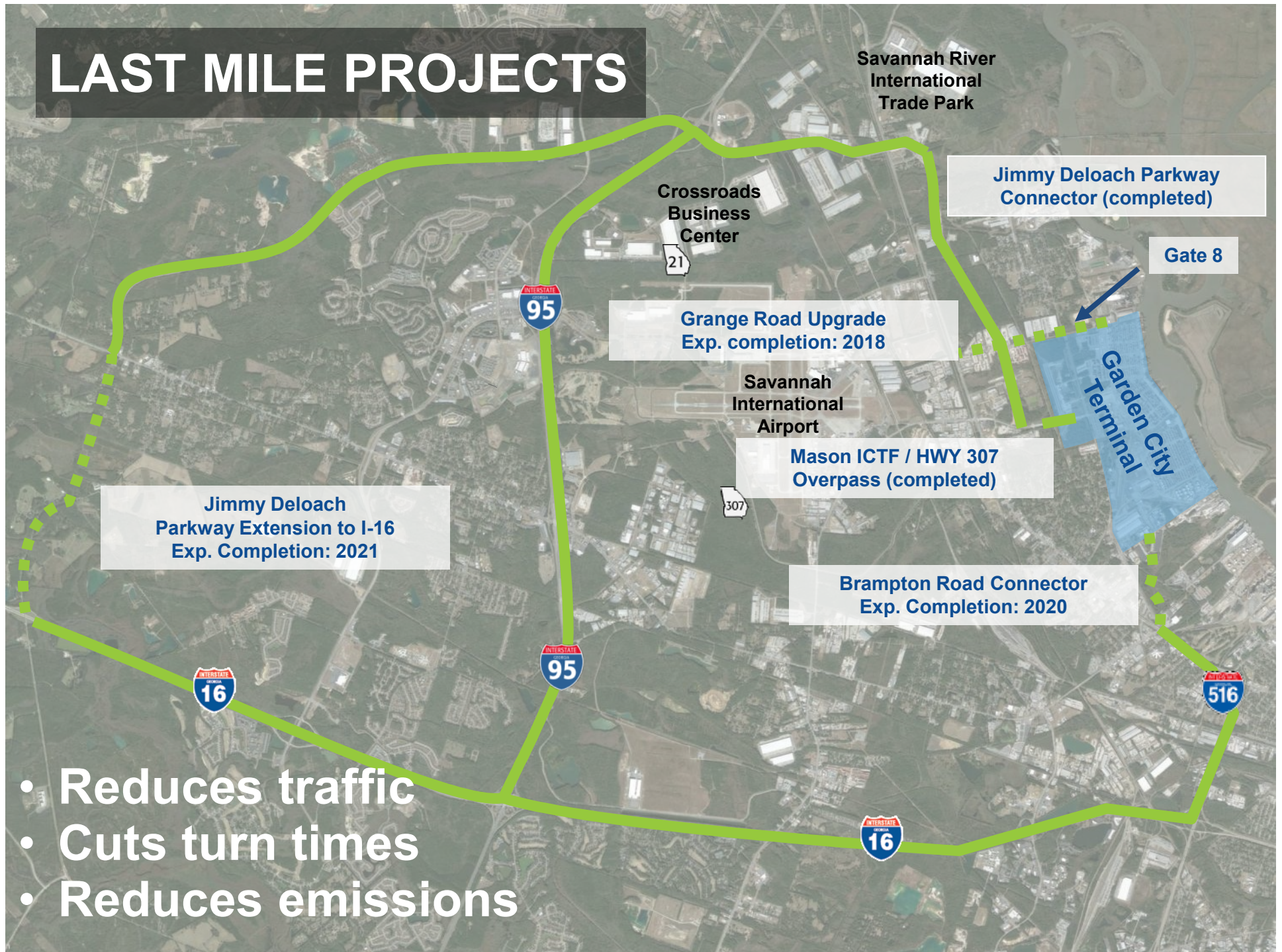


# GARDEN CITY TERMINAL: EQUIPMENT NOW & IN THE FUTURE

- 4 Super Post-Panamax Cranes delivered in November 2017
- 6 Super Post-Panamax Cranes for delivery in 2020

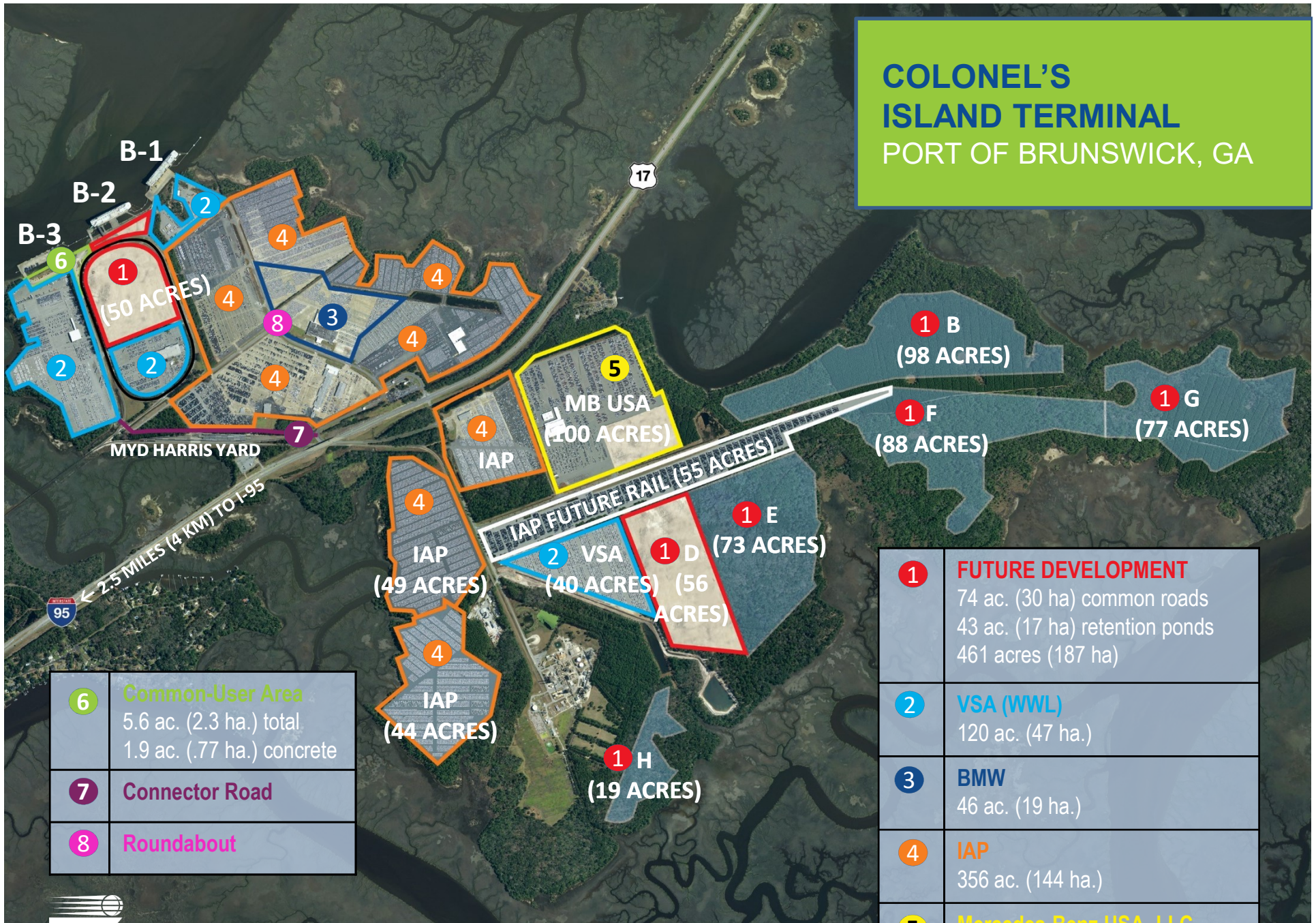
Equipment Type	Current	Build Out
Ship to Shore (STS) Cranes	30	36
Rubber Tired Gantries (RTG)	146	201

# LAST MILE PROJECTS



- Reduces traffic
- Cuts turn times
- Reduces emissions

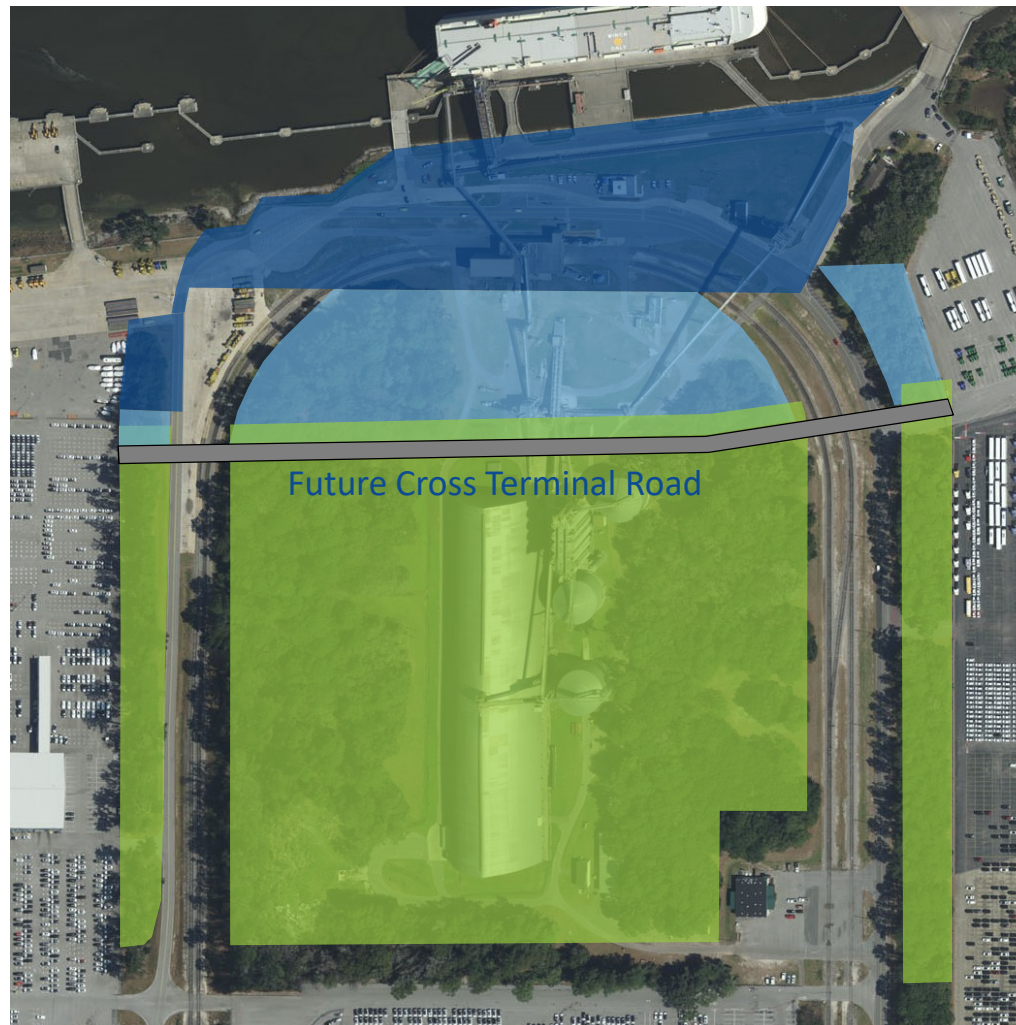
# COLONEL'S ISLAND TERMINAL PORT OF BRUNSWICK, GA



1	<b>FUTURE DEVELOPMENT</b> 74 ac. (30 ha) common roads 43 ac. (17 ha) retention ponds 461 acres (187 ha)
2	<b>VSA (WWL)</b> 120 ac. (47 ha.)
3	<b>BMW</b> 46 ac. (19 ha.)
4	<b>IAP</b> 356 ac. (144 ha.)
5	<b>Mercedes-Benz USA, LLC</b> 100 ac. (40 ha.)

# COLONEL'S ISLAND BULK FACILITY RE-DEVELOPMENT PLAN

- Demolition to begin in May with completion by Aug. 1, 2018
- Paving project should commence in Aug., 2018 with completion in July, 2019



- First Point of Rest High and Heavy Pavement (9.3 Acres+/-)
- First Point of Rest Standard Pavement (8.5 Acres +/-)
- Standard Pavement (32.2 Acres +/-)

# CONNECTOR ROAD, ROUNDABOUT, NEW GATES, AND ADDITIONAL LIGHTS MYD HARRIS RAIL YARD



# INTERMODAL UPDATE





**ARP**

# SAVANNAH INLAND TERMINAL STRATEGY



# APPALACHIAN REGIONAL PORT

## ARP MARKET

Bowling Green ●

Nashville ●

Knoxville ●

Chattanooga ●

Huntsville ●



Chatsworth/Dalton

Atlanta ●

Cordele ●



Savannah



Brunswick

### ARP

Completion Fall 2018

Alleviating congestion in Atlanta

Stimulating economic development

State-of-the-art electric cranes

# FUTURE TERMINAL



Northeast Georgia



Savannah



Brunswick



GEORGIA  
PORTS

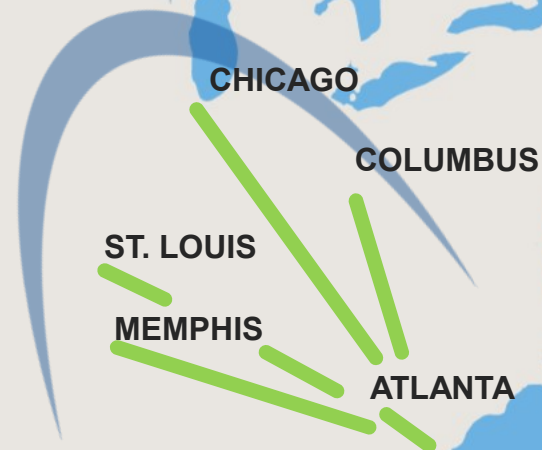
## **GPA MID-AMERICAN ARC**

UNIT TRAIN READY

25 TRAINS/WEEK TO MID-AMERICA

COMPETITIVE TRANSIT AND PRICING

LARGEST SE INTERMODAL TRANSIT





GEORGIA  
PORTS

---

[GAPORTS.COM](http://GAPORTS.COM)

**THANK  
YOU!**

