



UNITED STATES COAST GUARD AND SHEP



U.S. COAST GUARD



INTRODUCTION

- MSU Savannah Missions and Authorities
- Work on SHEP until now
- Work to be done for completion



U.S. COAST GUARD



USCGC Missions

11 Statutory Missions

1. Ports, Waterways and Coastal Security
2. Drug Interdiction
3. Aids to Navigation
4. Search and Rescue
5. Living Marine Resources
6. Marine Safety
7. Defense Readiness
8. Migrant Interdiction
9. Marine Environmental Protection
10. Ice Operations
11. Other Law Enforcement



U.S. COAST GUARD

Authorities

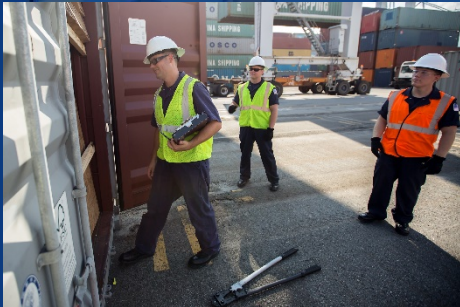
**Captain
of the
Port
(COTP)**

**Officer in
Charge of
Marine
Inspection
(OCMI)**

**Commanding
Officer**
MSU Savannah

**Federal
Maritime
Security
Coordinator
(FMSC)**

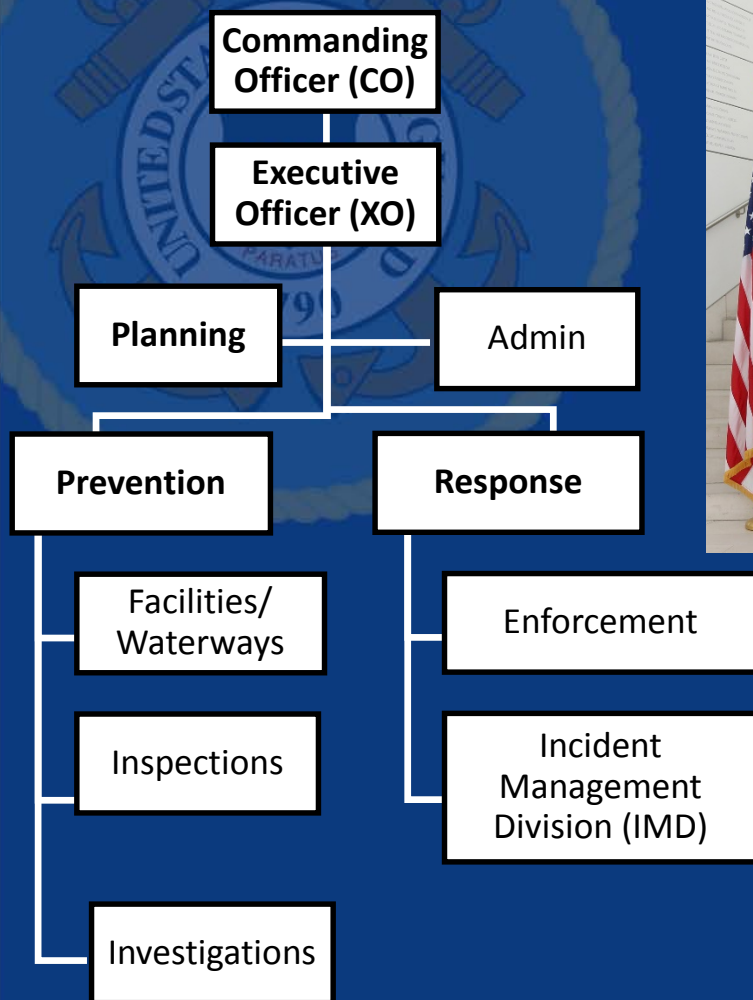
**Federal
On-Scene
Coordinator
(FOSC)**



U.S. COAST GUARD



MSU Savannah Organization

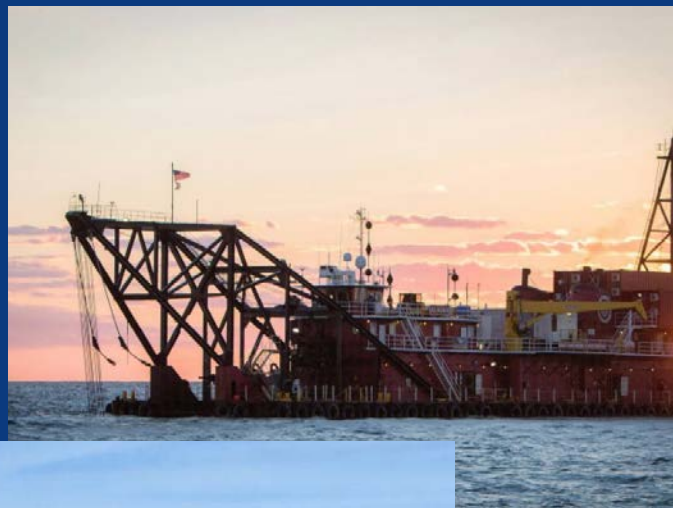


U.S. COAST GUARD



Savannah Harbor Expansion Project (SHEP) Work to date

- Coordination w/Port Partners
 - CSS Georgia
 - Dredging
 - UXO

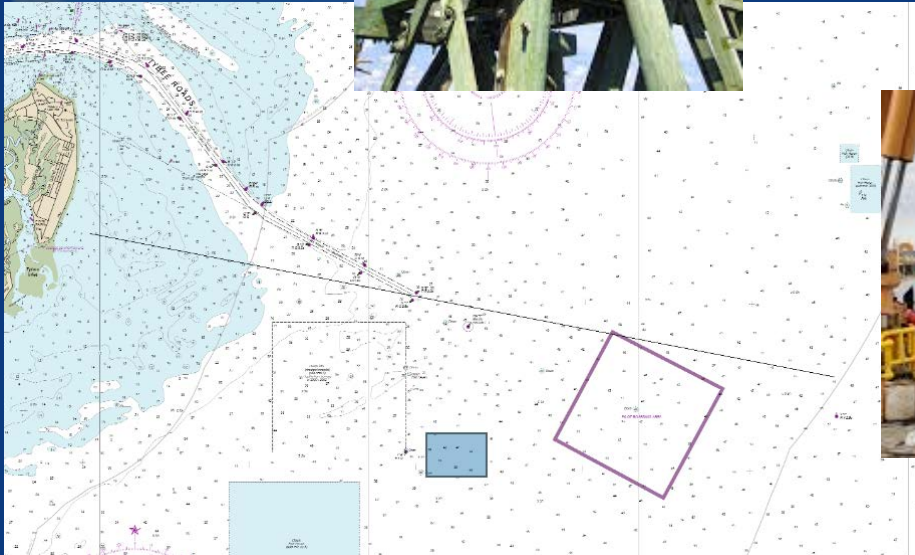


U.S. COAST GUARD

USCG Projects needed to complete SHEP



- Build Outer Range (2020)
- Set offshore ATON
- Movement of Ranges to align w/ channel





QUESTIONS?



U.S. COAST GUARD

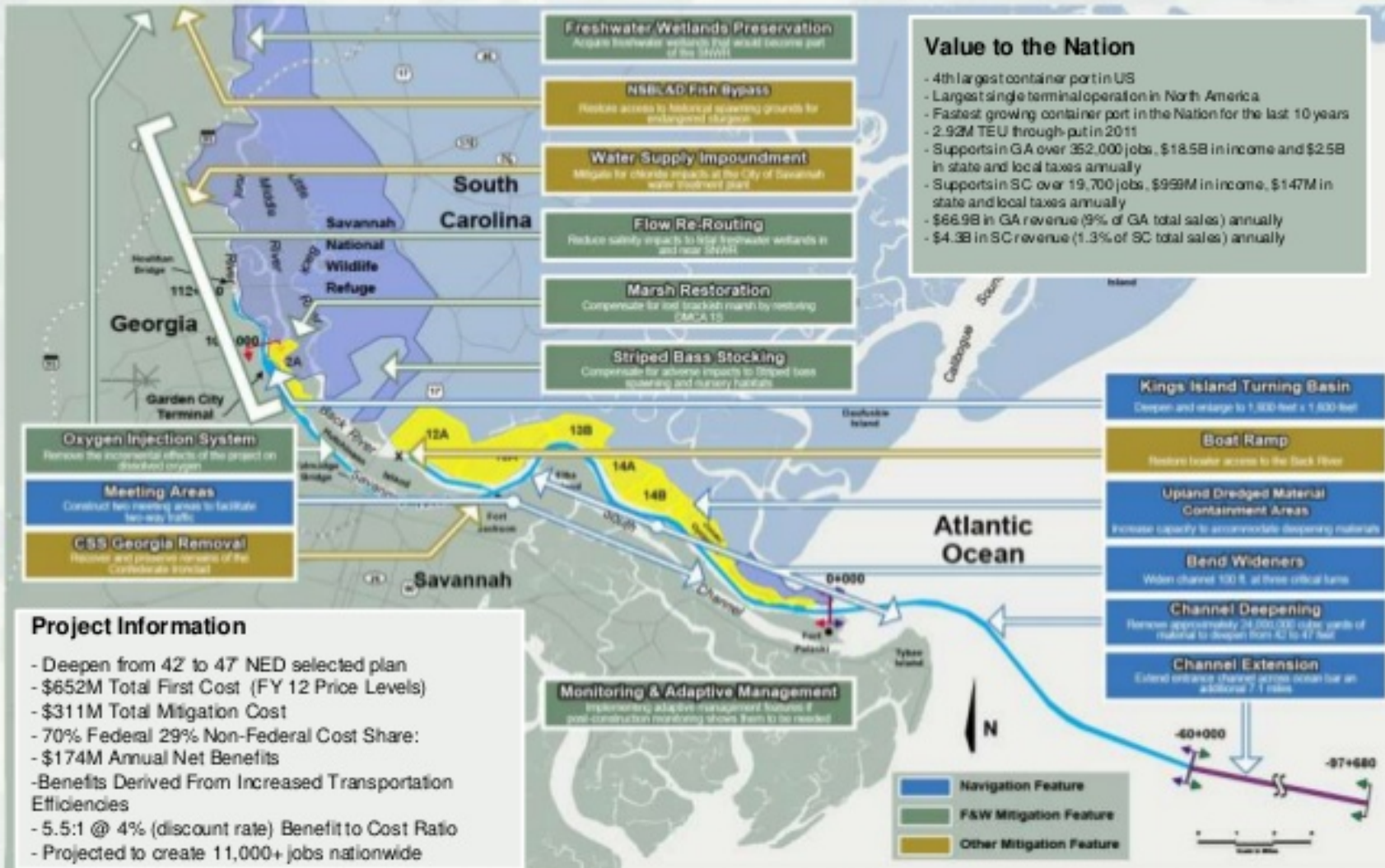


Back up Slides



U.S. COAST GUARD

47' NED Selected Plan





MSU Savannah Area of Responsibility (AOR)

- *Scope of Responsibility*
 - Ports of Savannah and Brunswick
 - Savannah River to Cumberland River
 - 116 mi of shoreline
 - 95% navigable waters in GA
- *MSU Savannah Resources*
 - 35 Active Duty
 - 6 Civilians
 - 19 Reservists
 - 4 Auxiliary Flotillas

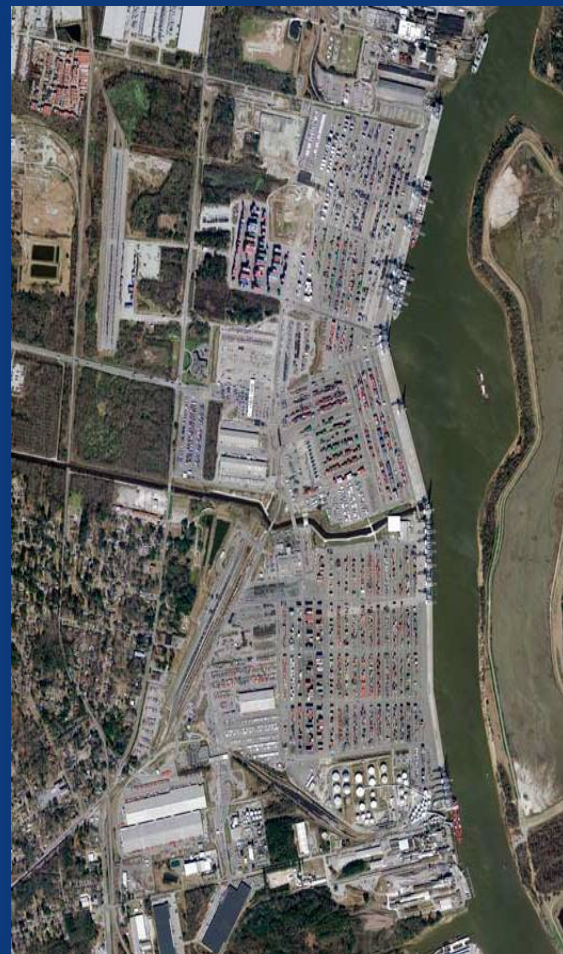


U.S. COAST GUARD



MSU Savannah World of Work

ACTIVITY	CY15	CY16
Vessel Arrivals	3830	3962
Port State Control Exams	298	390
Domestic Vessel Inspections	198	306
Vessel Operational Controls	81	60
Security Boardings	50	76
PWCS Facility Patrols	150	175
Container Inspections	1546	1625
Casualty Investigations	97	65
Pollution Incidents	66	62



U.S. COAST GUARD



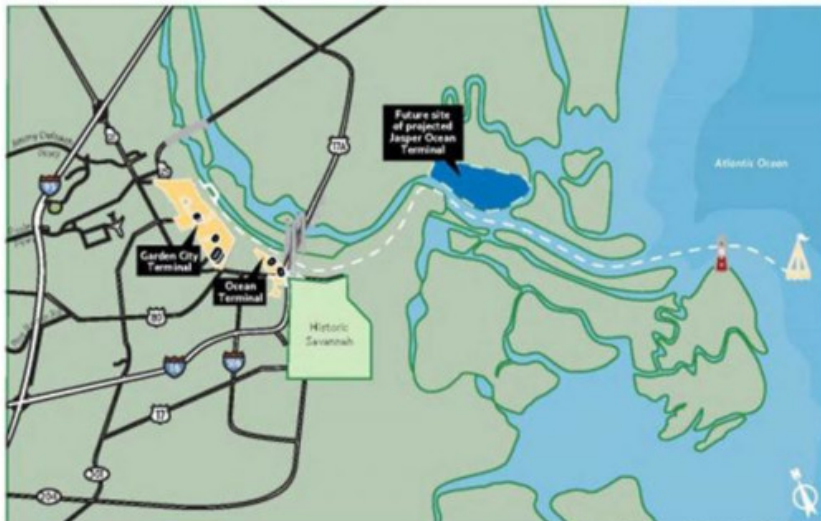
Proposed Jasper Ocean Terminal

- Partnership between GA and SC Ports Authorities
- 1,500 acres, annual capacity of 7 Million TEUs (largest in U.S.)
- Channel has no bridges/height restrictions from Sea Buoy



JASPER PORT

The new Jasper Ocean Terminal will be located downriver of Georgia Ports Authority's Garden City and Ocean terminals



Map courtesy of Jasper Ocean Terminal Joint Project Office

- On the SC side of Savannah River
- Currently in ACOE EIS



Elba Island LNG Terminal

- \$2 Billion Project to liquefy Natural Gas for export
- Completion 2018
- Anticipate 30 more vessels annually



U.S. COAST GUARD



Southern AOR FOSC Response

- St. Mary's, GA: Northern-most part of SEC JAX COTP Zone, suffered significant damage in Hurricane IRMA
- Entire waterfront area destroyed; est 30-40 boats sunk or displaced; NPS ferry service to Cumberland Island National Seashore disrupted
 - Incident-specific FOSC delegated to MSU CO
- FEMA issued ESF-10 Mission Assignment
 - MSU supervised federal project; removed 29 boats w/4000+gal of oil; est \$724k project
- Close collaboration w/FEMA, NPFC, SEC JAX, D7, GA DNR, local Govt



U.S. COAST GUARD



Southern AOR FOSC Response

- Key Take-aways:
 - Positive impact & relief to assist heavily-hit unit to our south
 - MSU likely best suited for this large scale operation working with GA DNR, locals; build upon existing relationship; sometimes the state line is better delineation than CFR defined zone.
 - Thorough comms w/NPFC, D7, FEMA were critical to comprehensive understanding of the mission assignment verbiage



U.S. COAST GUARD