

Captain William A. Broadley
Retired Federal Pilot - Master

410-885-5932

billpilot2@outlook.com

Representing Ad Hoc Group

- Members of the MAC (Mariners' Advisory Committee for the Bay & River Delaware
- Members of AWO (American Waterways Operators
- Masters and Mates of Coastwise ships

Purpose

Propose various Routing Measures and Anchorages along the Mid-Atlantic and Southern East Coast.

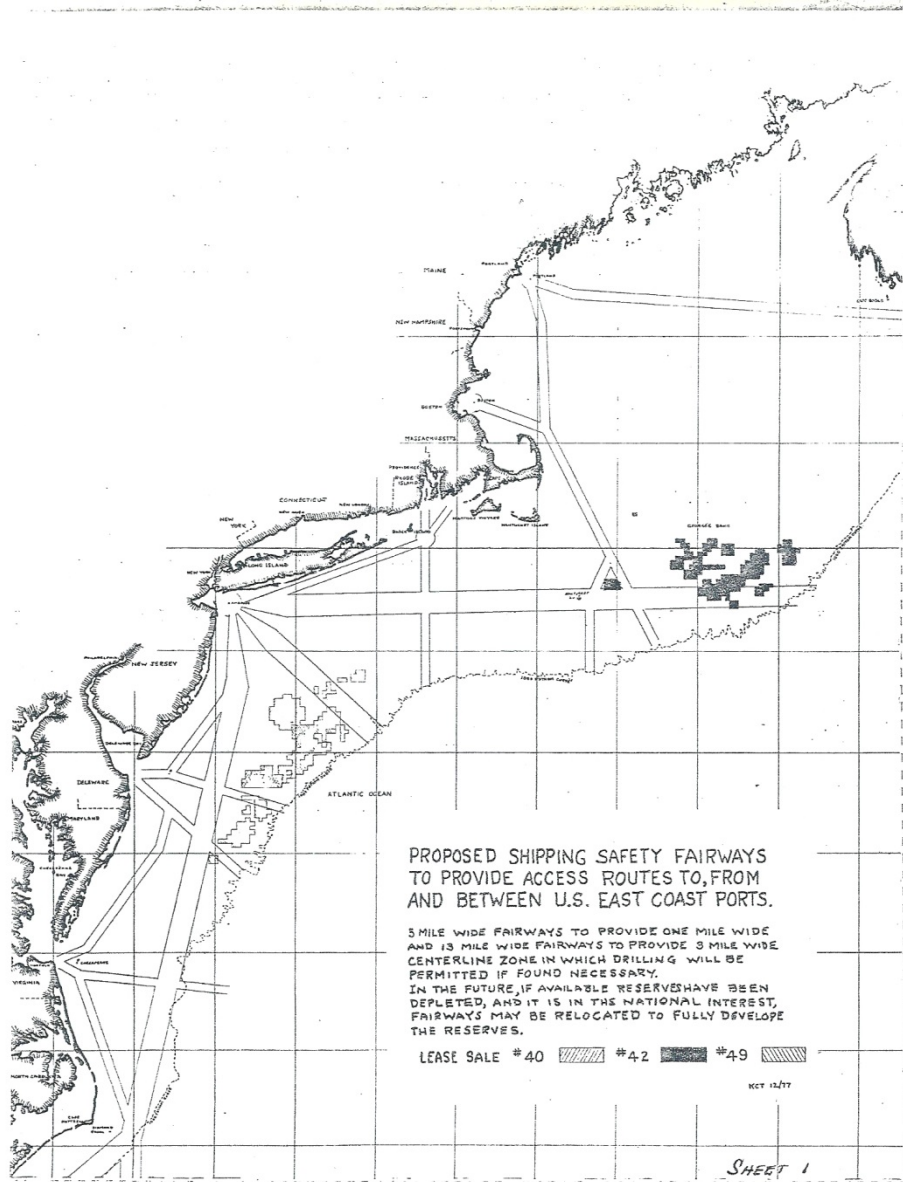
Make our proposals available to

- BOEM
- US Coast Guard ACPARS Study
- MARCO
- Wind Farm Developers

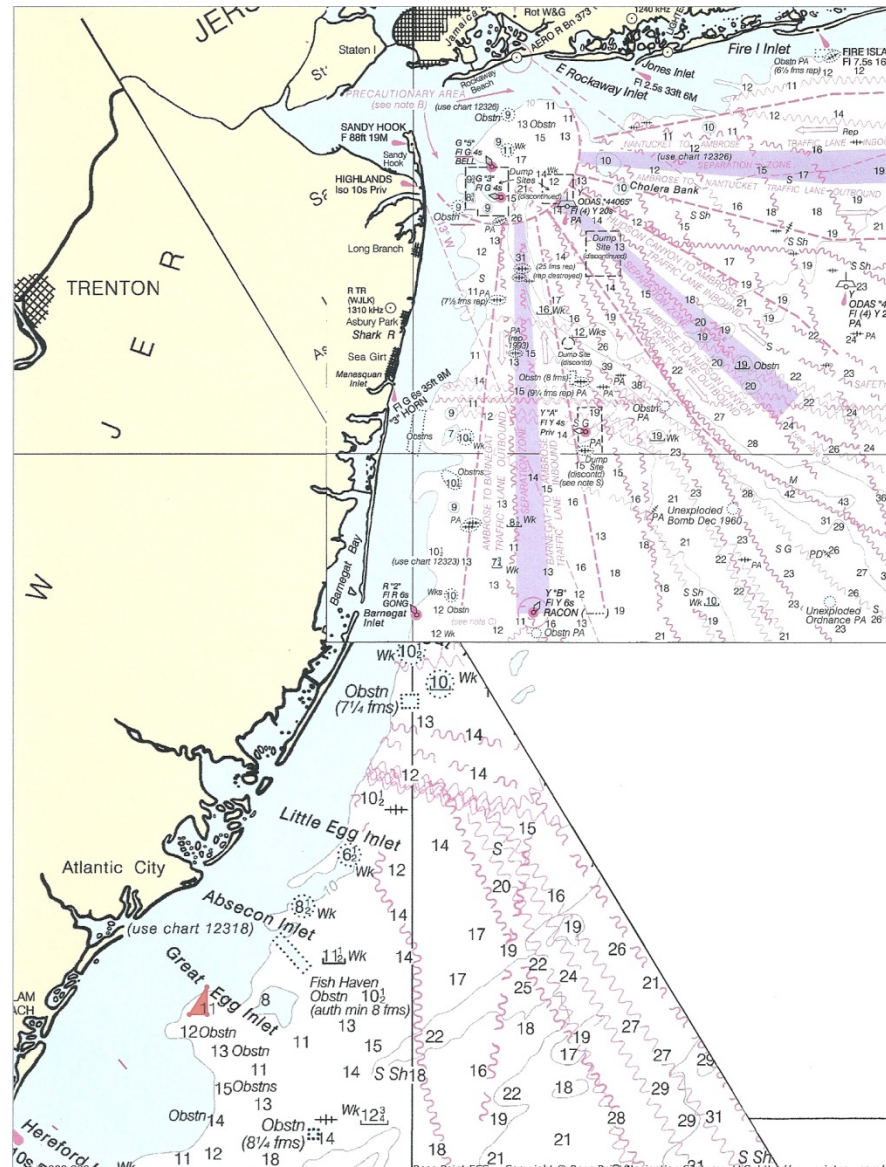
Research

- History
- What generally is being done
- Other areas – Gulf of Mexico
 - Europe
 - What makes sense

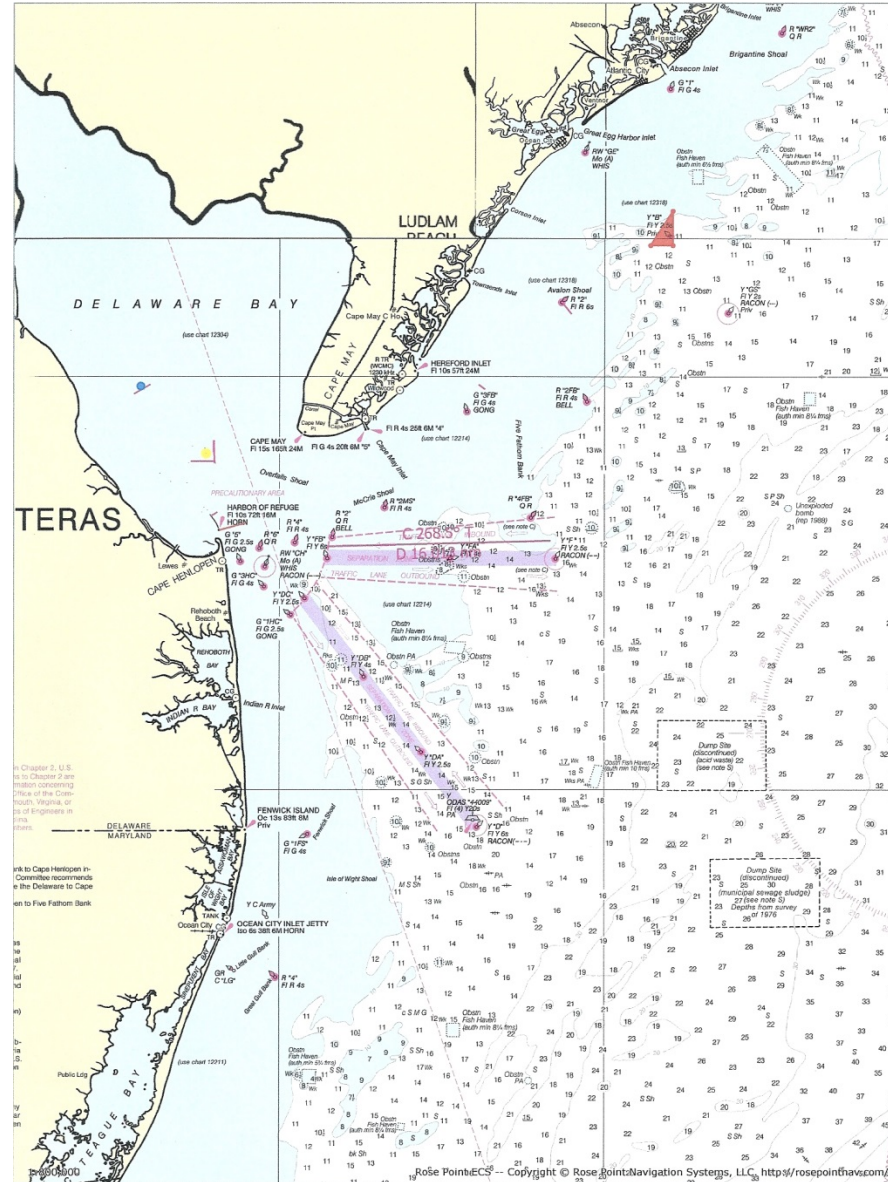
History



Existing Routing Measures



Delaware Bay Approaches



REGULATED NAVIGATION AREA 165.501 (see note I)

CHESAPEAKE CHANNEL

SMITH SOUND

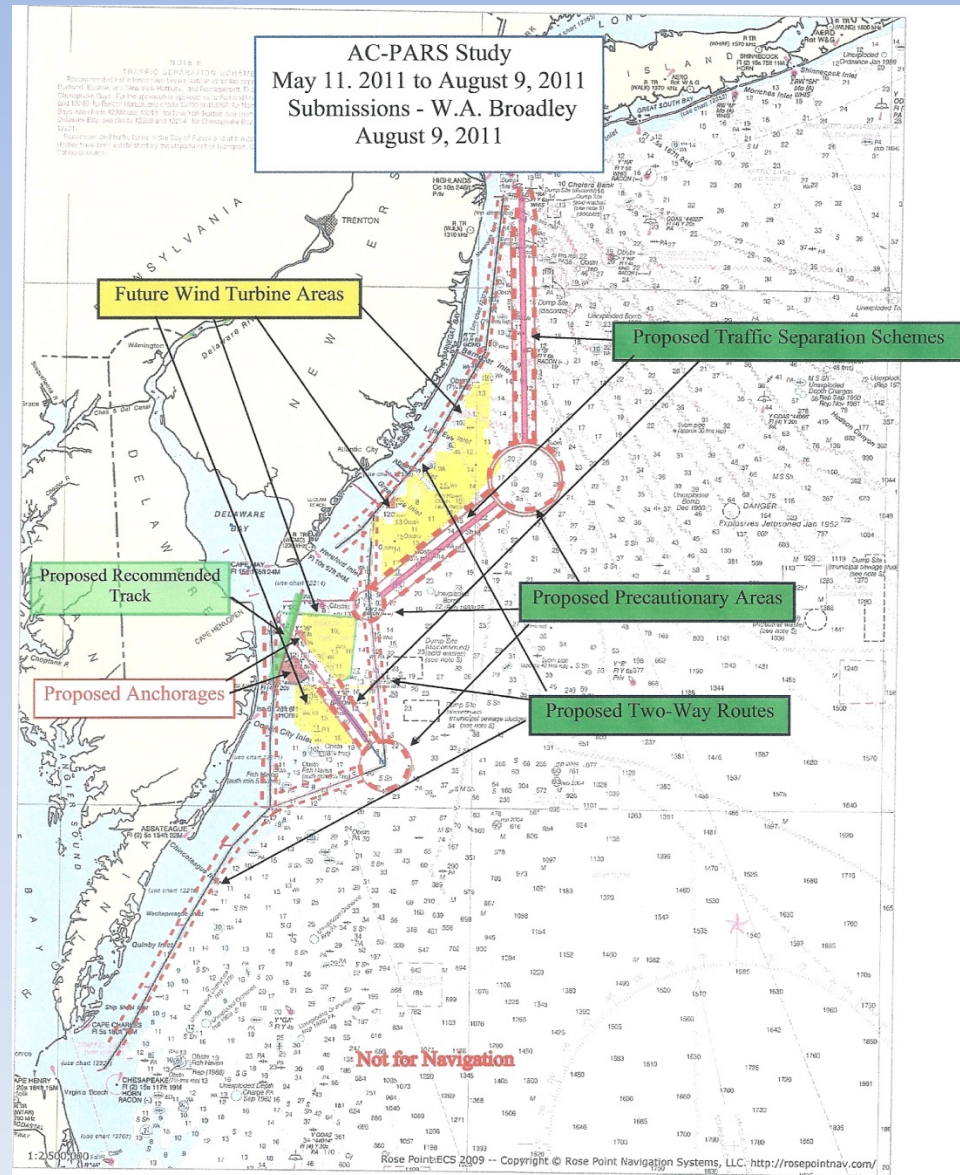
LOCAL MAGNETIC DISTURBANCE

DANGER ZONE 334.390 (see note A)

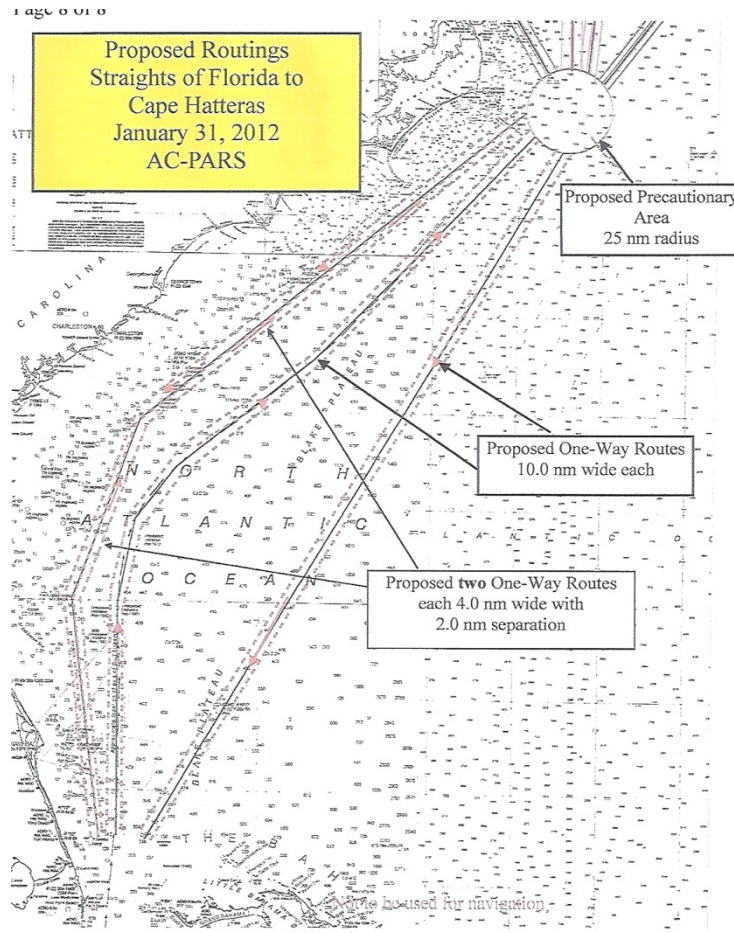
1,300,000

Rose Point E/S - Copyright © Rose Point Navigation Systems, LLC. <http://rosepointnav.com>

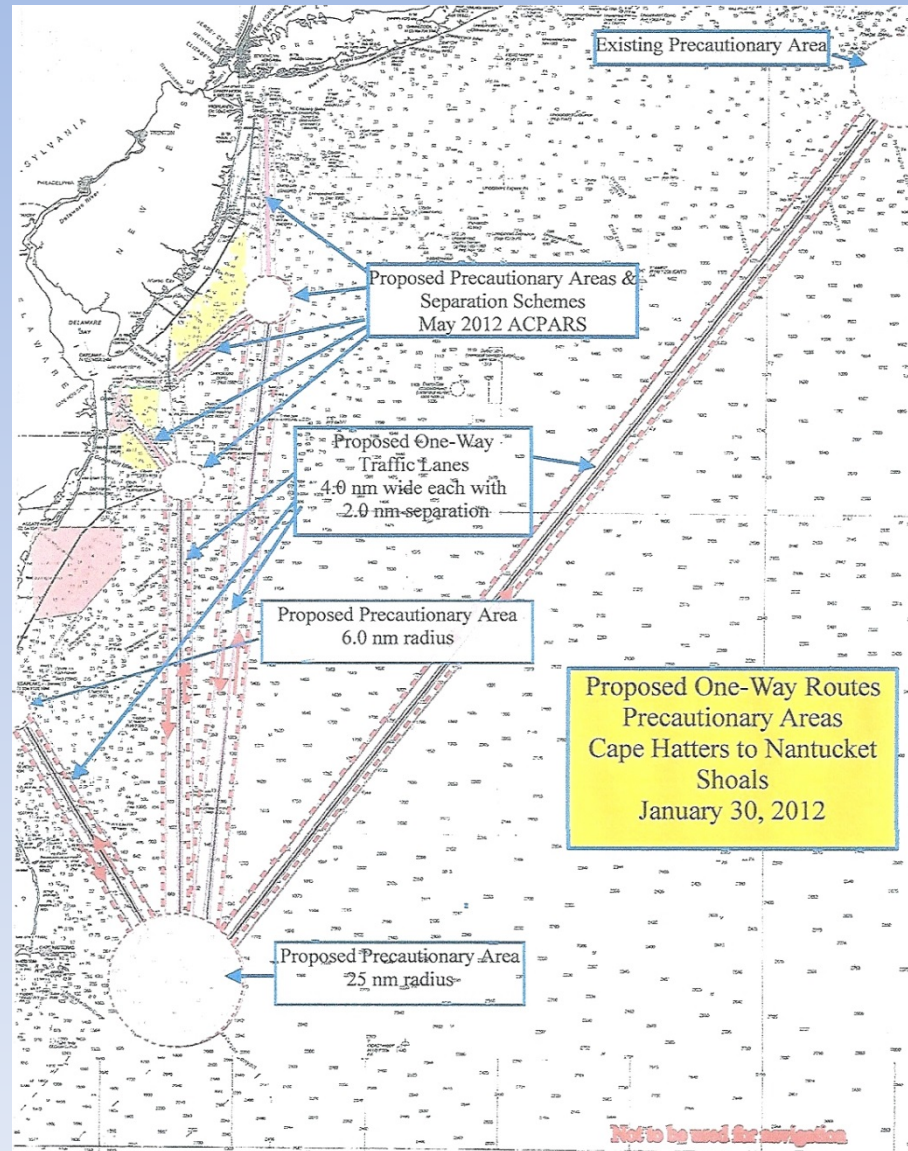
First Proposal to ACPARS 8/2011



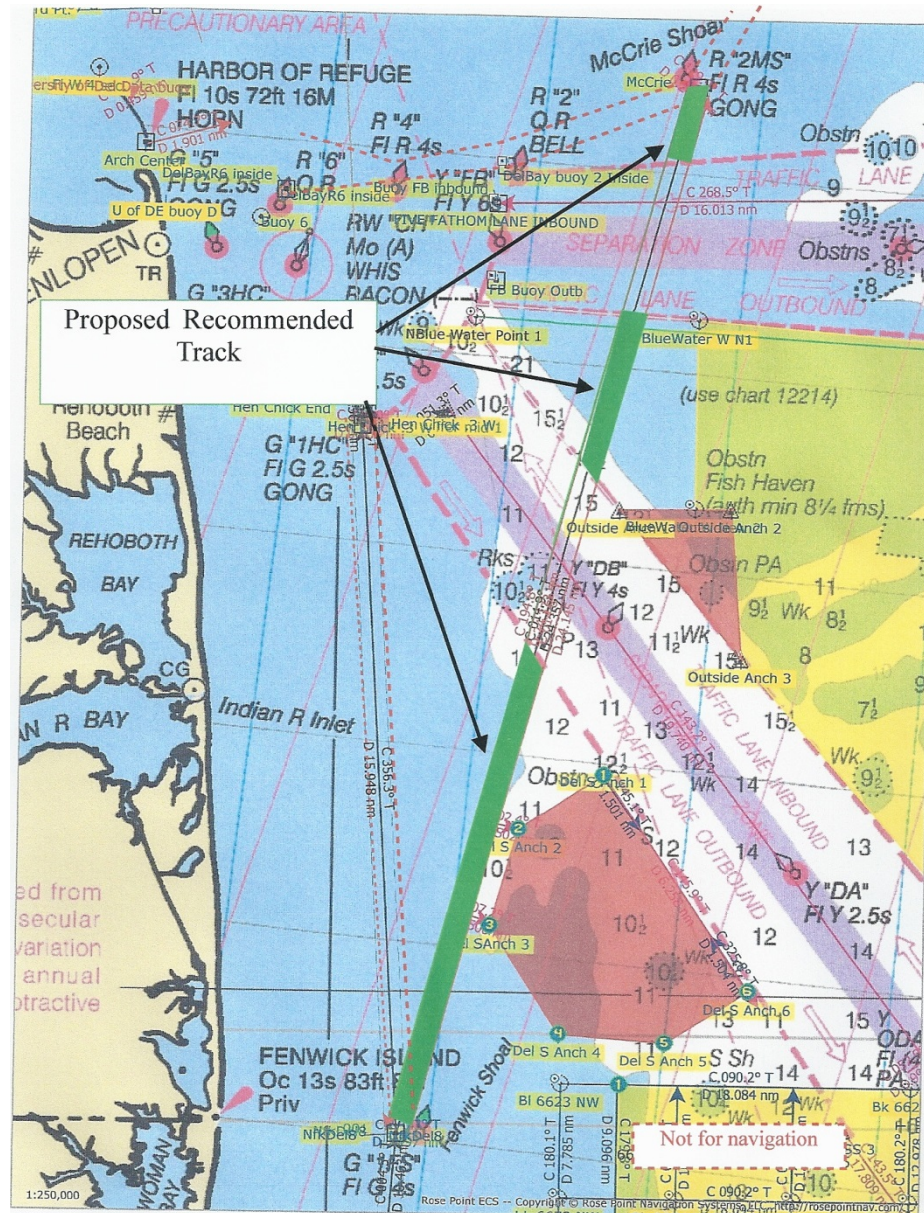
Proposal to ACPARS 1/2013 South



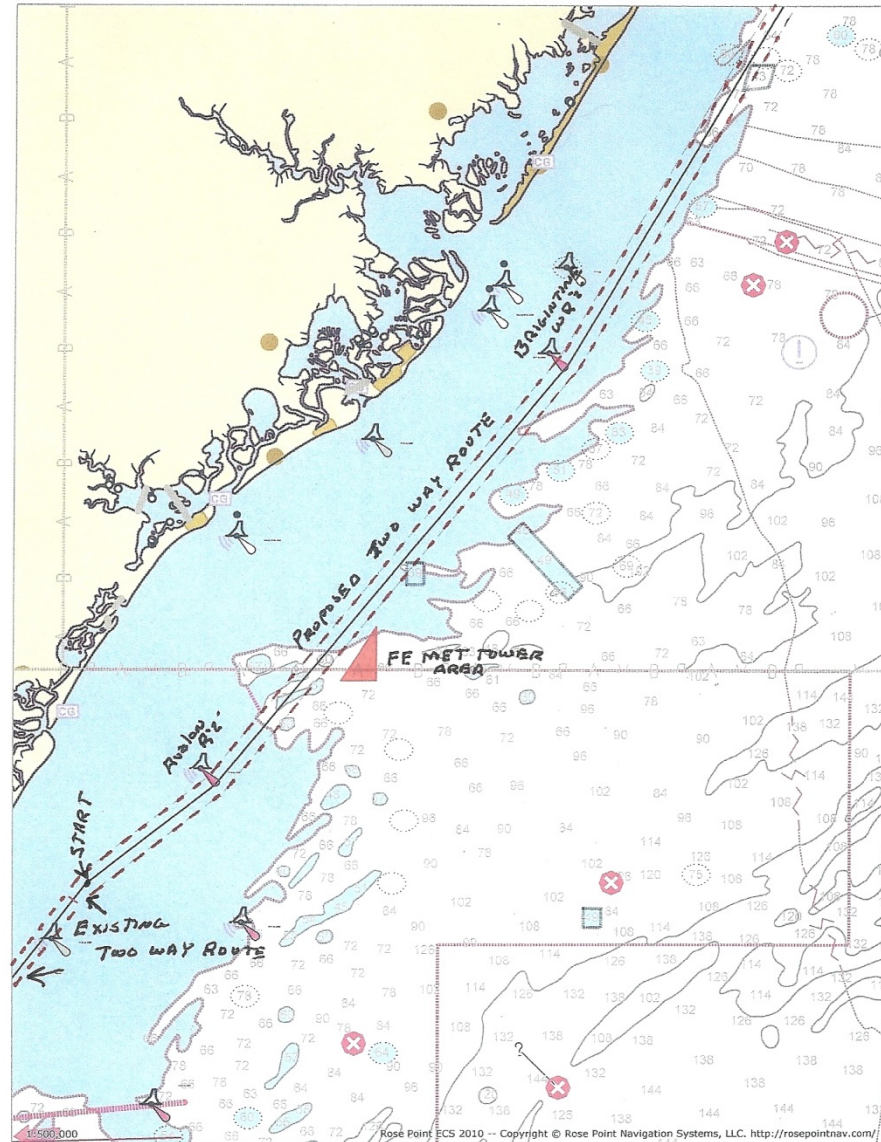
Proposal to ACPARS 1/2012



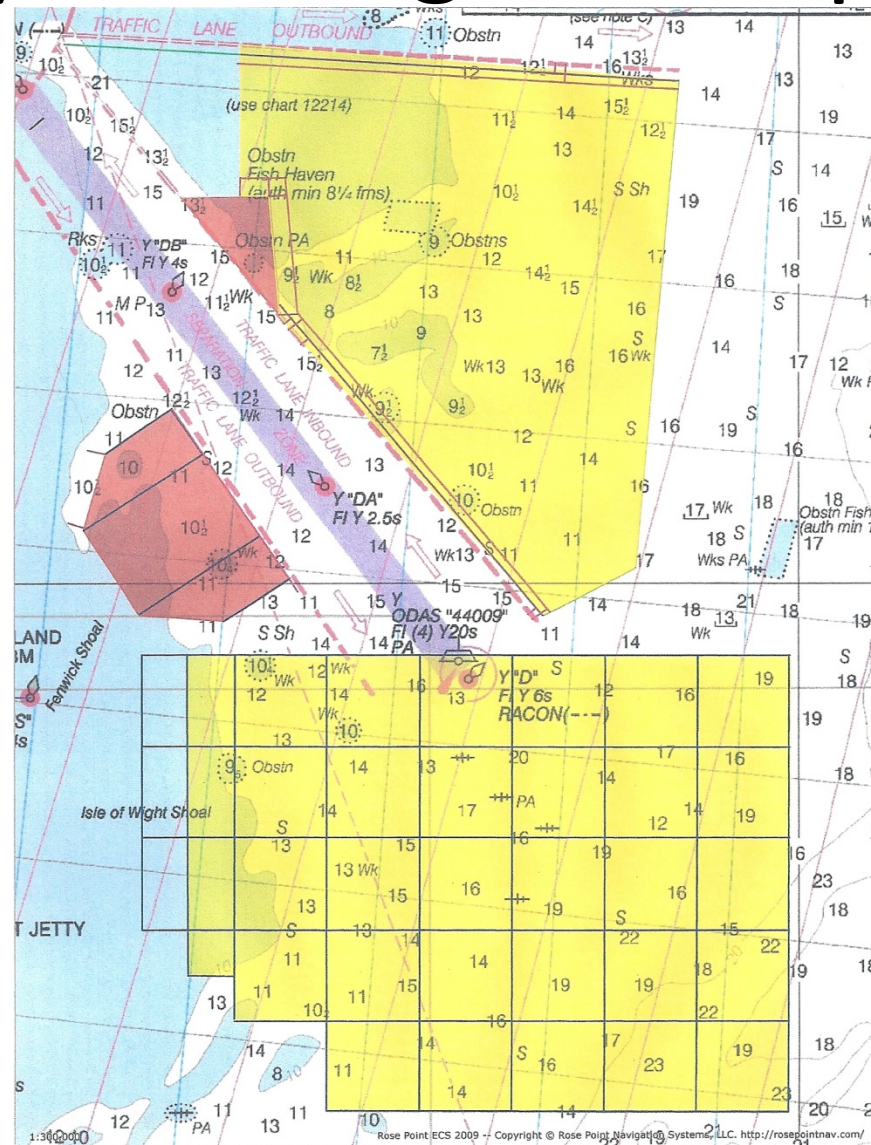
Approaches to Delaware Bay Proposal



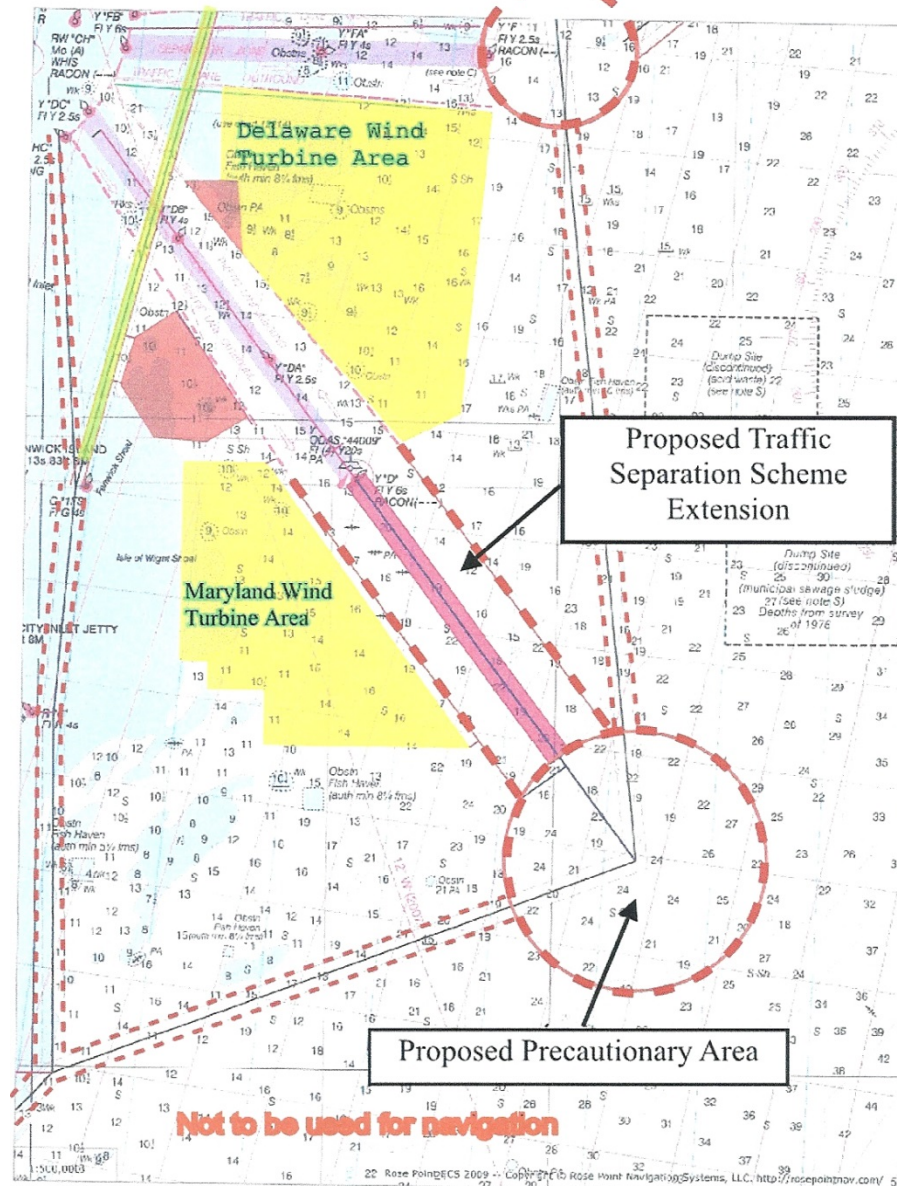
Fisherman's Energy MET Tower Proposal



Maryland Original Proposal



MD & DE WEAs with Routings



Radar Simulation

Radar Simulation
Inbound Delaware Traffic Separation Scheme Extension



38-24-24.0 N
74-36-48.0 W
TC 323 COG 12.5 Knots
Radar Range 24 NM Rings 4.0