

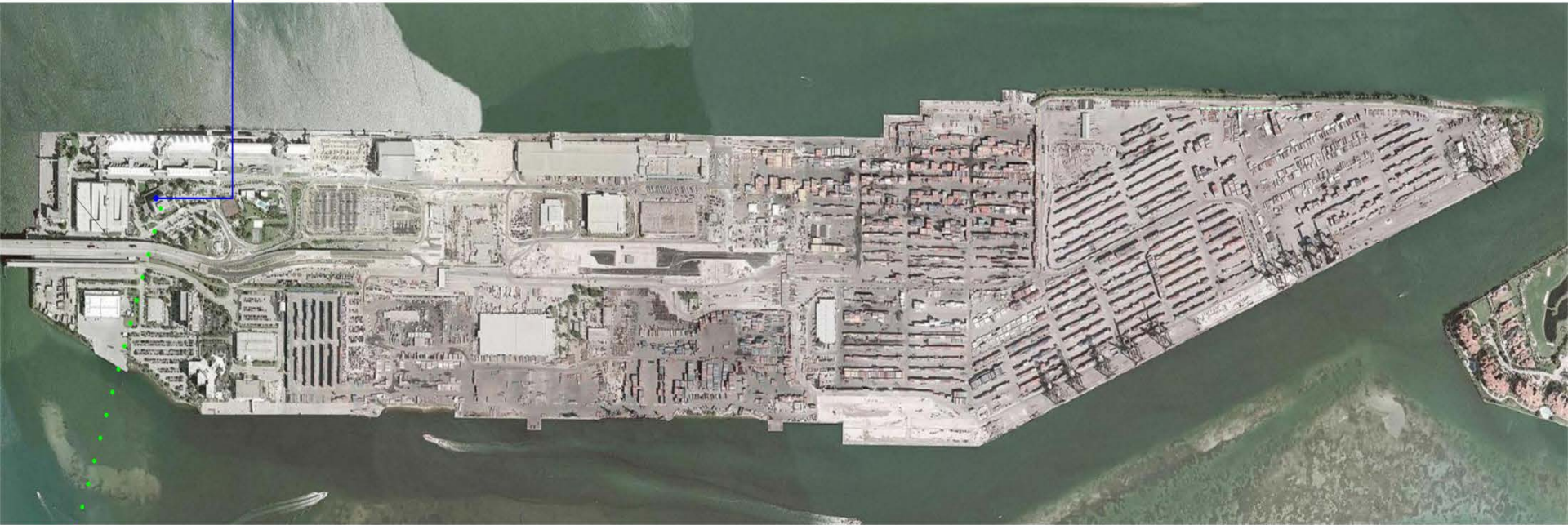


Partnering for Safe, Secure, and Resilient Port Operations

Systems integration, collaboration, and partnerships to leverage existing systems and to eliminate redundant regional information technology initiatives, information sharing

Louis A. Noriega
Automated Port Solutions
Physical Security and Operations Technology Consultant
louis.noriega@aportsolutions.com

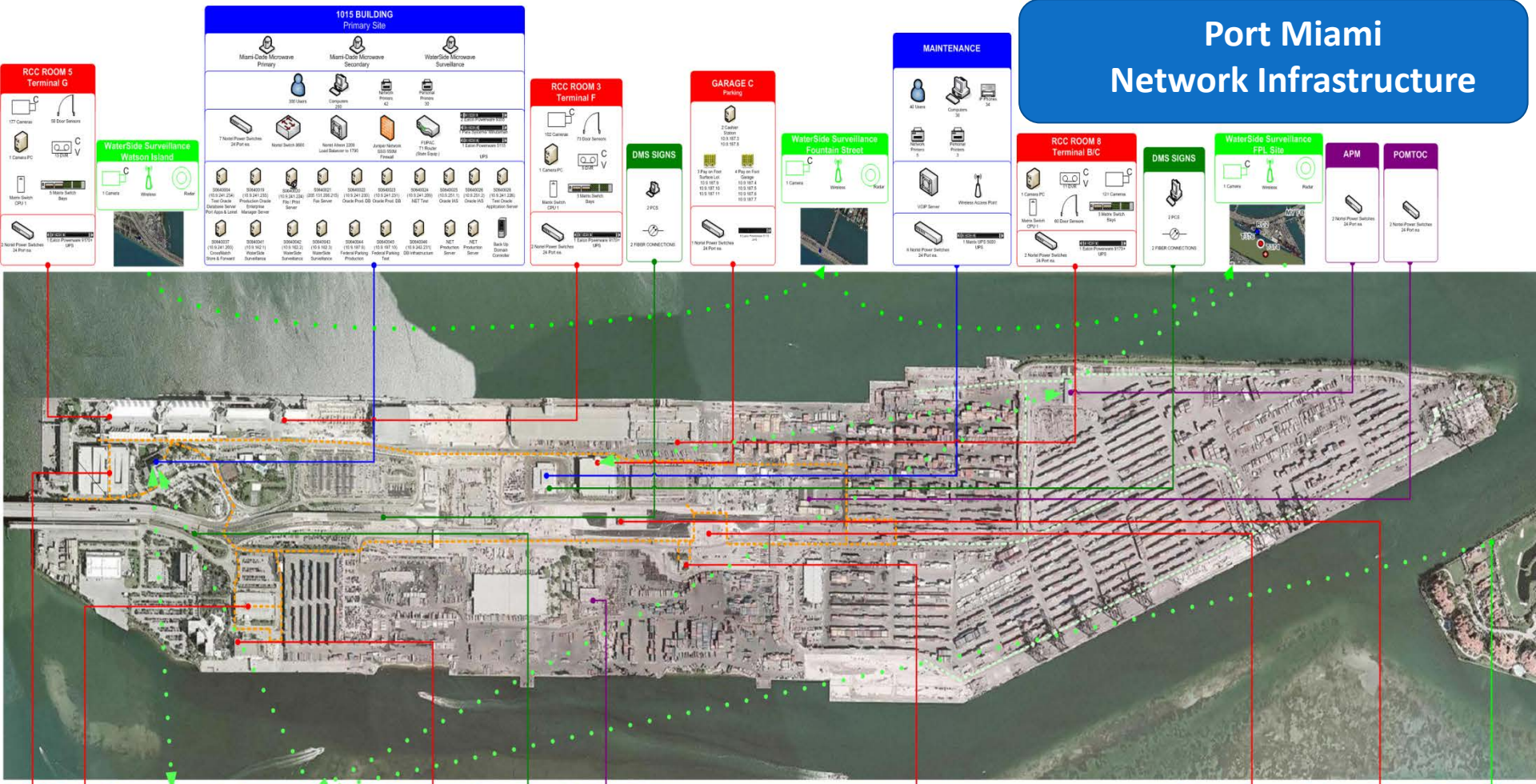
Port Miami Network Infrastructure



ETSD

1999

Port Miami Network Infrastructure



2012

Physical Security Technology Master Plan

- Identify Security Threats (Facility Security Plan)
- Identify Funding (Grants)
- Prioritize
- Identify the Technologies
- Preliminary System Design
- Manage the technology and security tools instead of letting them manage you.

Physical Security Technology Funding

- Federal Emergency Management Administration (FEMA)
- Transportation Security Administration (TSA)
- Urban Areas Security Initiative (UASI)
- Port Security Grant Program (PSGP)
- State Department of Transportations (X-DOT)
- Emergency Management Performance Grant (EMPG)
- Citizen Corps Program (CCP)
- Transit Security Grant Program (TSGP)
- Tribal Homeland Security Grant Program (THSGP)
- Metropolitan Medical Response System (MMRS)
- Intercity Bus Security Grant Program (IBSGP)
- Emergency Operations Center Grant Program (EOC)

Cargo Gate Vehicle Processing Systems

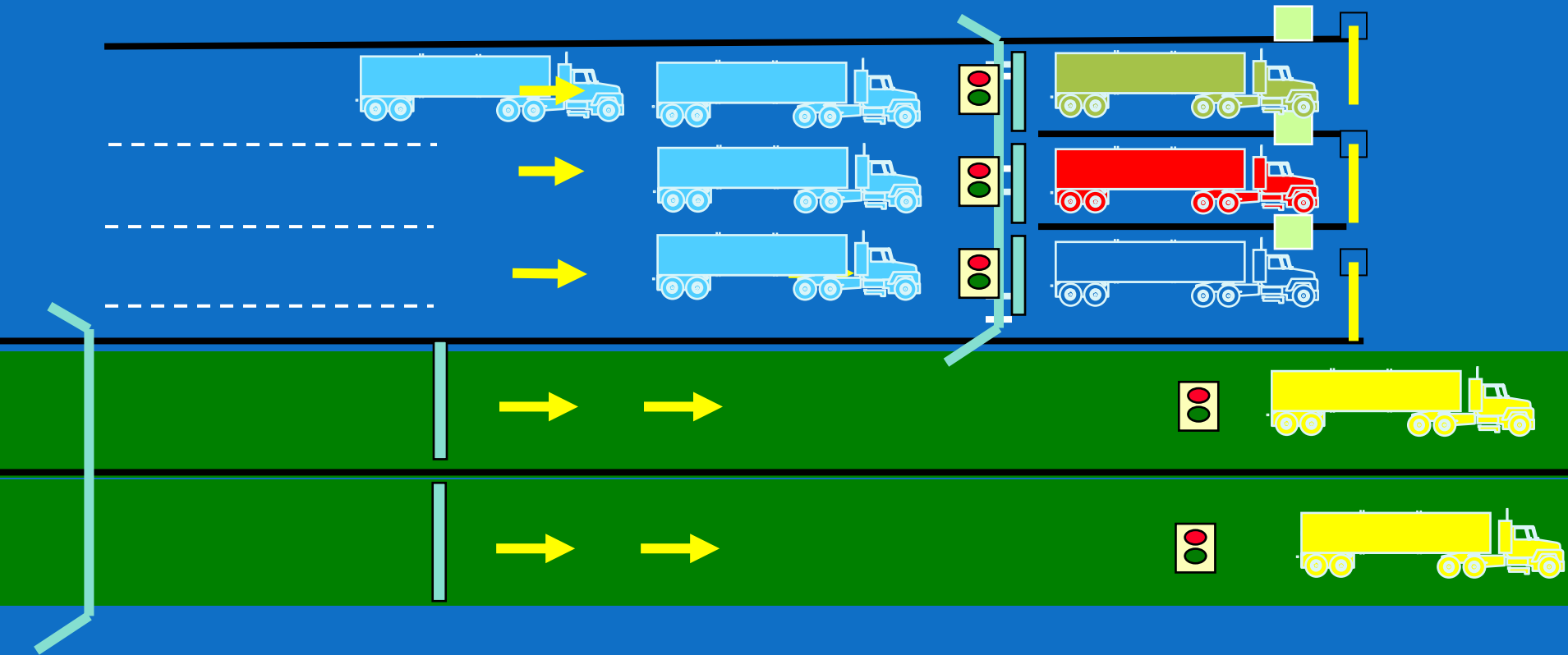
- Cargo Gate Vehicle Processing Security Systems are used to control access to the restricted cargo areas of Seaports.
- Use of cameras, proximity readers, magnetic stripe readers, etc., all vehicles and persons screened are captured and stored.
- This processing system assures that visitors have pre-authorized clearance from the Cargo Terminal Operators.



Terminal Entrances



Green Lanes for Cargo Entrance Gates



Video Management

- Pixels Per Foot
- Resolution Digital
- Degrees of Coverage
- Camera Selection
- Lens Selection
- Video Analytics
- Analog
- Digital (IP)
- Hybrid
- Network
- Recording
- Storage



Alarming Systems Access Control

- Integrated Access Control, Alarm Monitoring and Visitor Management Systems deliver maximum protection, versatility, simple operation and cost efficiency.
- An advanced access control system gives you the power to monitor every entry.
- Notifications of entry may also be sent to your mobile phone for further safety assurance.

Personal Details Form

Exit Image Preview History Cards New Note Vehicle Passes Print Dock Print Card Dossier Parking Certificate Take Edit

Last Name: TESTPARKS First Name: TEST Middle: DRL No: F777777777 FL
Personal ID: 78230 SSN: 020-30-6050 D.O.B.: 12/14/1965
Race: W Weight: 125 Height: 105 Sex: F
Hair Color: BLONDE Eye Color: BROWN
Address: TEST TEST Line 2:
City/ST/Zip: MIAMI FL 33165
Home: (305) 227-4343 Work: Cell:

Parking Privilege: Yes Certifications: No
Company: MIAMI DADE COUNTY EMPLOYEE
Department: ACCOUNTING Title: DETECTIVE
Personal status: Access Level
BadgeType: pewa Admin Bldg

Last Fingerprint Information State National
Fingerprint Re-Sent Name Search
TCN: TEST000000007
Sent On: 8/20/2008
Received On: 8/20/2008
Rejected: TCR:

ADJUDICATION APPROVED on 8/20/2008 !!! Next Fingerprint Check Recommended: STATE.

| Tag No | Effective From | Effective To |
|--------|----------------|--------------|
|--------|----------------|--------------|

Notes

| DATE | NOTE |
|------|------|
|------|------|

Record: 1x 1

Current card information

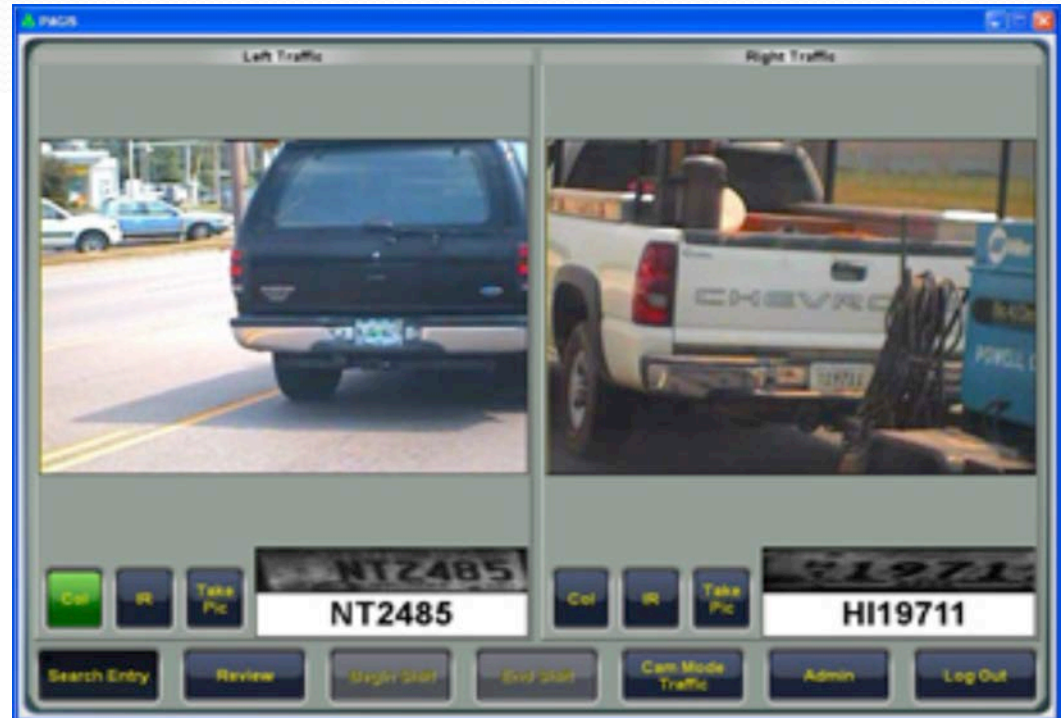
Card No.: 1000074
Pm Serial No: 218002
Issue Date: 10/22/2008
Exp. Date: 8/20/2009
Bdg status: ACTIVE
Bdg Type: pewa



Alarming Systems Access Control

Law Enforcement Automatic License Plate Reader (ALPR)

- Arms law enforcement with real-time knowledge and post-action criminal intelligence
- License plate recognition systems take a clear image, and translate its characters
- Make a substantial impact in crime prevention since 70% of all crime is connected to a vehicle



Alarming Systems Ground Transportation

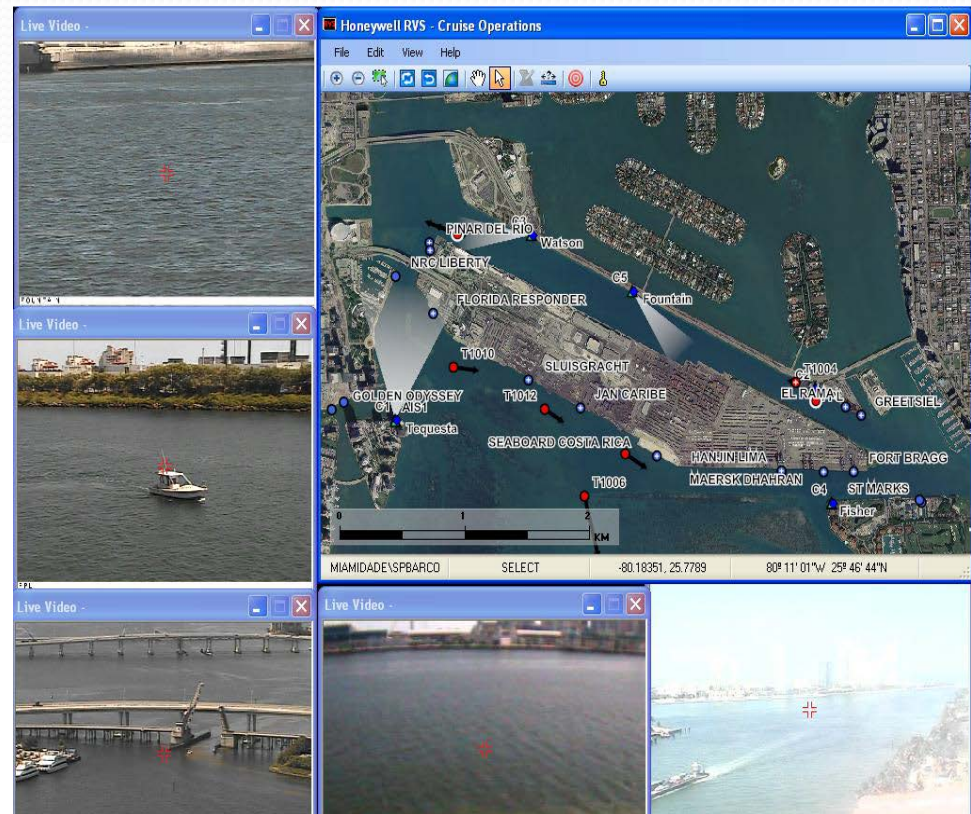
- Revenue Generation
- Expired Business Permit
- Expired Liability Insurance Coverage
- Expired Surety Instrument



Alarming Systems

Waterside Radar / AIS Surveillance

- Radar detects moving or stationary targets.
- AIS use radar sensors to detect intruders in user defined alarm zones.
- Video is recorded and distributed over a Local Area Network to provide recorded history and real-time situational awareness.
- When an alarm is triggered, personnel can identify the threat and make security decisions before the threat reaches the perimeter.



Alarming Systems

Others

Fire Detection & Alarm

Building Alarm Systems

Intrusion
Motion

Vibration
Glass Breakage

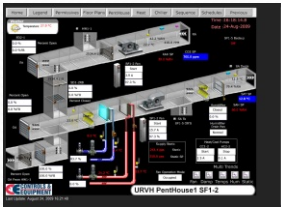
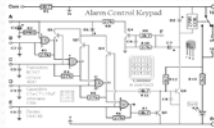
Building Management

HVAC
Heating
Ventilation

Lighting
Power
Elevators

Fence Line Protection

Underground / Threaded Fiber
Vibration Sensors



HOUDINI TELLS US

WHAT TO DO NOW...



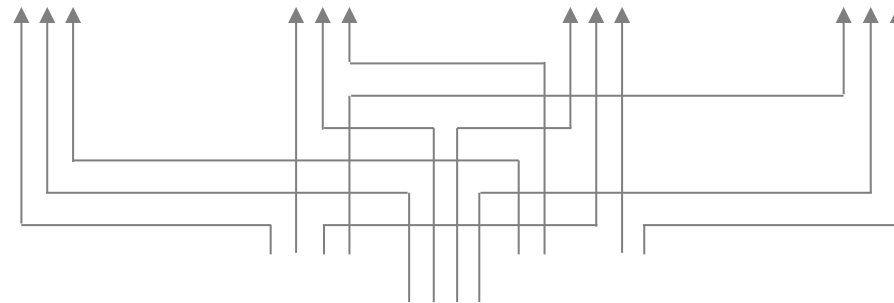
What Do I do?



Command and Control Centers – The Situation Today

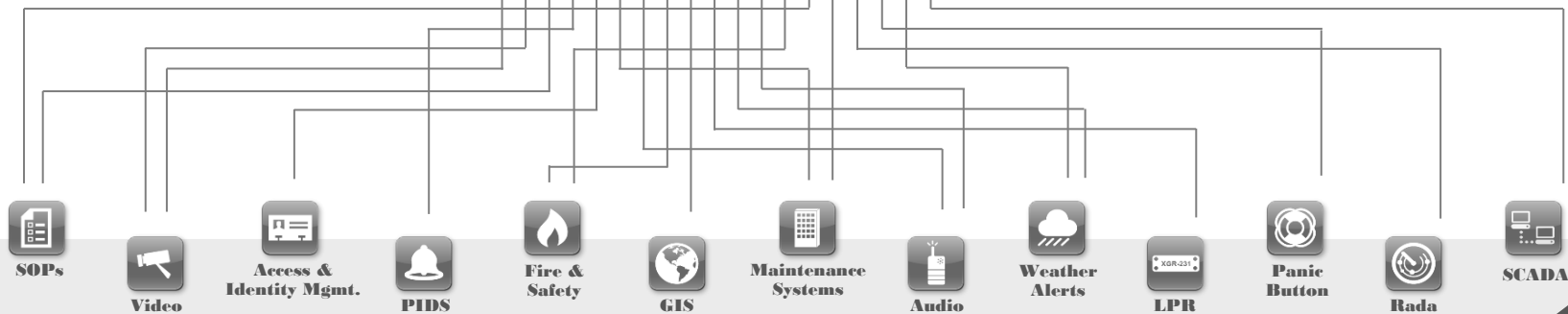


- Siloed systems
- Unsynchronized
- Manual procedures
- Limited Situational awareness
- Complex reporting
- Difficult to measure



Inefficient Response

Overload of Information



Sensors & Systems

Physical Security Information Management (PSIM)

WHAT:

Physical security information management (PSIM) is a category of software that provides a platform and applications created by middleware developers, designed to integrate multiple unconnected security applications and devices and control them through one comprehensive user interface.

HOW:

It collects and correlates events from existing Disparate security devices and information systems (video, access control, sensors, analytics, networks, building systems, etc.) to empower personnel to identify and proactively resolve situations.

WHY:

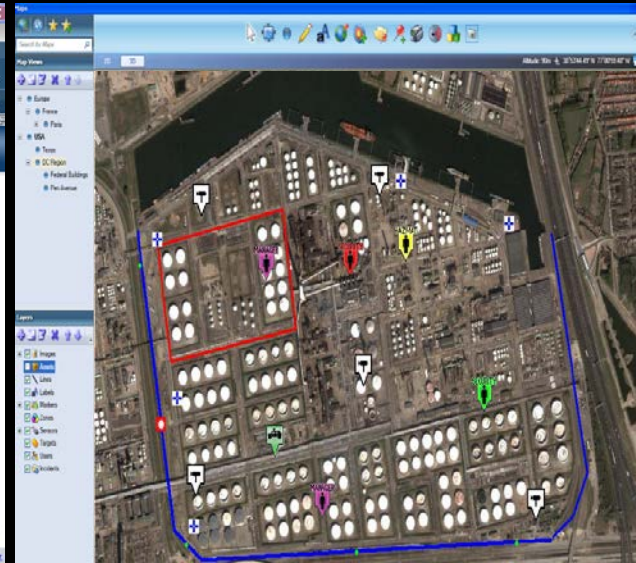
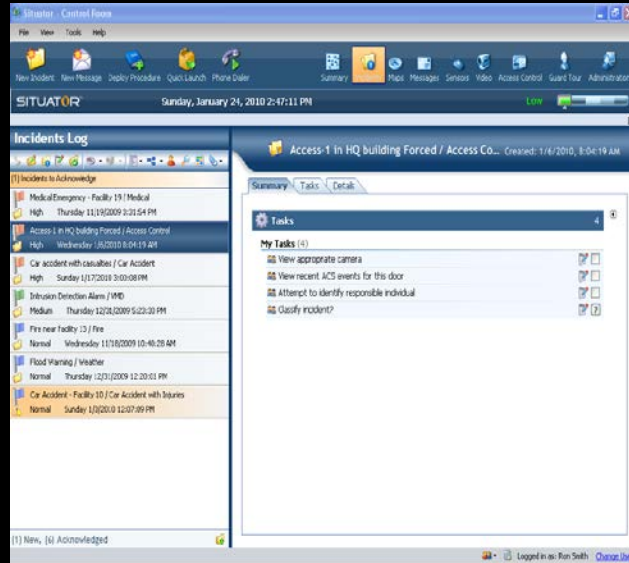
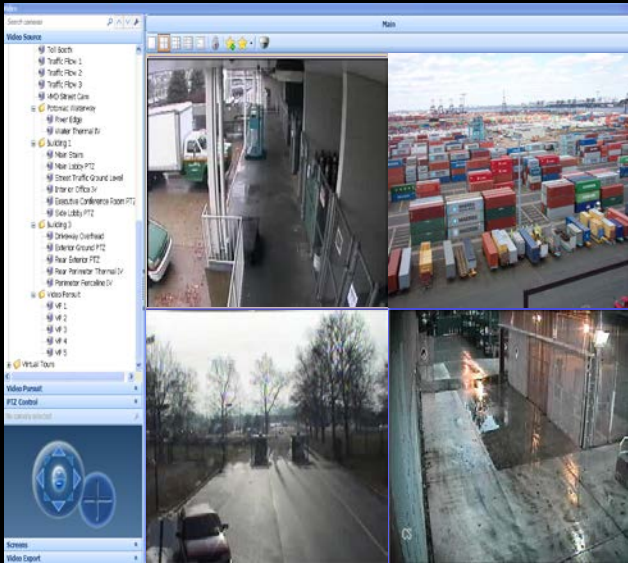
PSIM integration enables numerous organizational benefits, including increased control, improved situation awareness and management reporting. Ultimately, these solutions allow organizations to reduce costs through improved efficiency and security through increased intelligence.



Video Management

Adaptive Response

GIS Visualization



Scenario

Mass Notification

The integrated use of networks, mobile devices and modern cloud technology, combined with the ability to integrate with legacy communication devices results in a uniquely complete and robust solution for the safety and security market



Coastal Surveillance





Partnering for Safe, Secure, and Resilient Port Operations

Thank you!

Louis A. Noriega
Automated Port Solutions
, Physical Security and Operations Technology Consultant
louis.noriega@aportsolutions.com