



# Navigation Technologies – Current State, Future Possibilities, Gaps, Barriers

CAPT Scott Smith

Office of Navigation Systems





- A little about the Coast Guard
- Current State of Navigation Efforts
- Concerns/Challenges/Gaps

CAPT Scott Smith

Office of Navigation Systems



DHS Programs	USCG Statutory Missions
Maritime Security Operations	Ports, Waterways and Coastal Security (PWCS) - Operational Activities
Maritime Law Enforcement	Drug Interdiction
	Migrant Interdiction
	Living Marine Resources (LMR)
	Other Law Enforcement (OLE)
Maritime Prevention	Ports, Waterways, and Coastal Security (PWCS) - Prevention Activities
	Marine Safety (MS)
	Marine Environmental Protection (MEP) - Prevention Activities
Maritime Response	Search and Rescue (SAR)
	Marine Environmental Protection (MEP) - Response Activities
Defense Operations	Defense Readiness
Marine Transportation System Management	Aids to Navigation (AtoN)
	Domestic Ice Operations





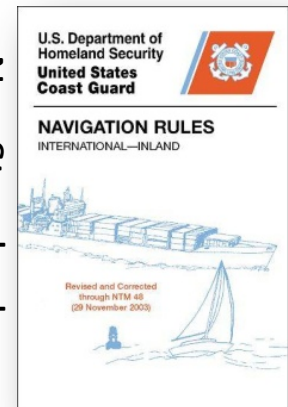
# MTS Functional Programs



- Domestic Ice



- Nav Standards



- Great Lakes Pilotage

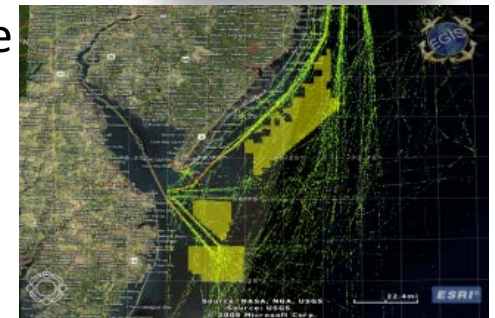


- Polar Icebreaking

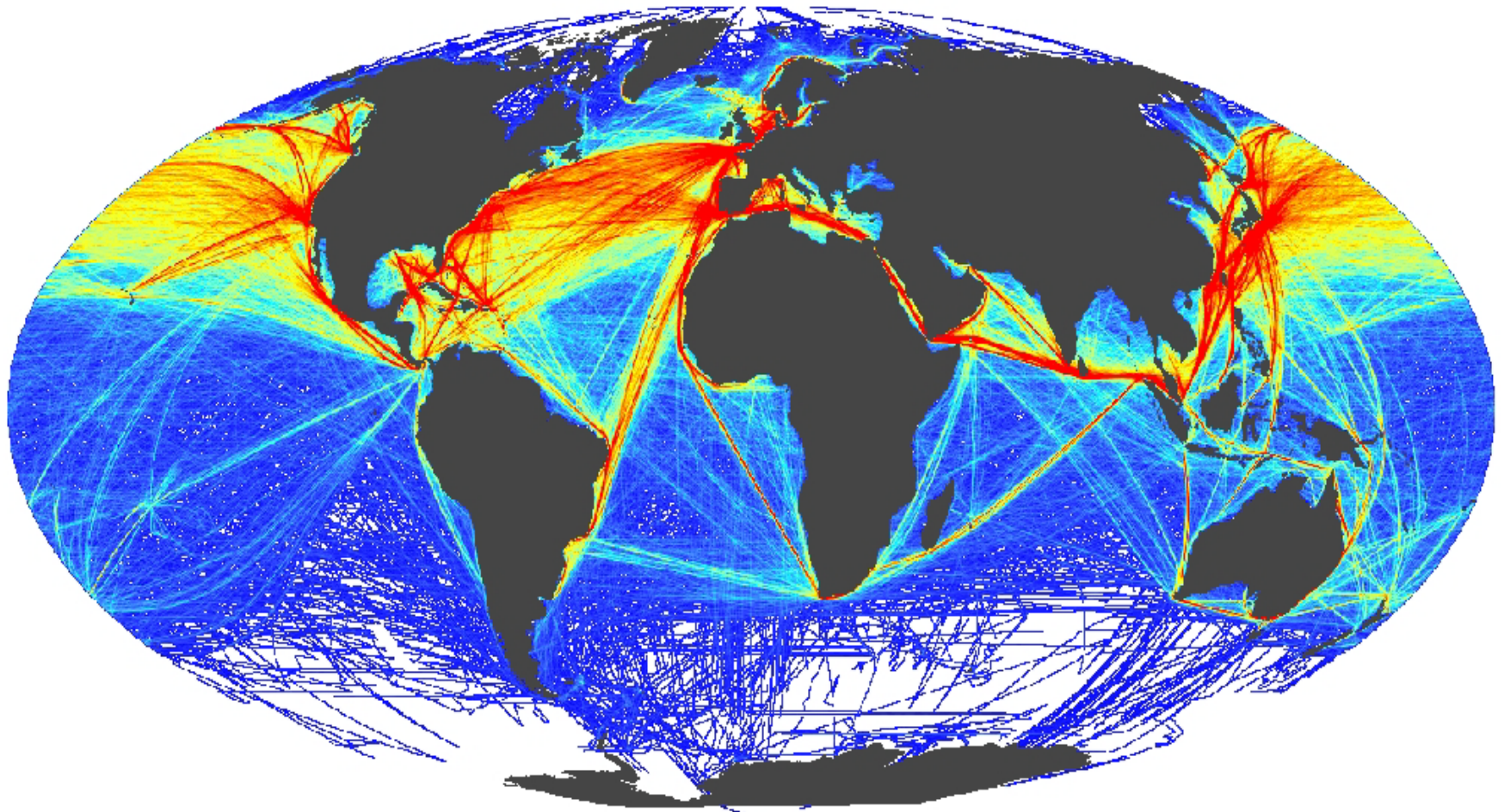
- Vessel Traffic Service



- Ocean & Transport Policy



- CMSP

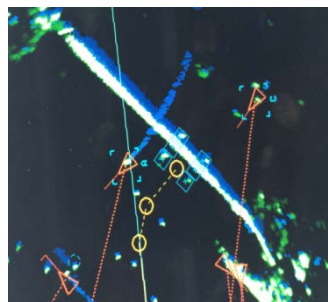


**MTS is IMPORTANT!**





# Future of Navigation Roadmap



## Equipment Standards, Regulations, and Policy

- AIS Regulations
- ECDIS Regulations
- ECS Policy NVIC 01-16
- RTCM Standards
- Public Outreach

## International Standards

- IMO
- IALA
- IHO
- IEC
- ITU

## Tactical Application Tests

- WR JCTD
- Deploy AIS ATON
- Work w/ FON IAT
- Smart Bridges
- Role out eMSI
- Public Outreach

## Policy Analysis and Development

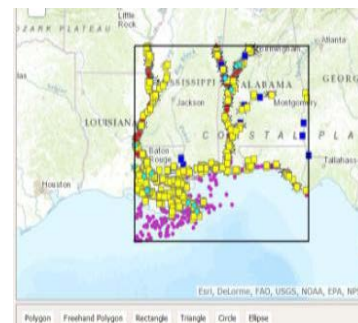
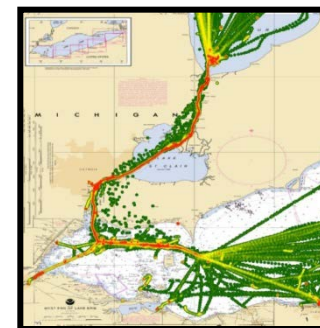
- National Level WAMS
  - Atlantic and Gulf Coast SeaCoast
  - Pacific Coast SeaCoast
  - Deep Draft (12' and Above)
  - Shallow Draft (below 12')
  - ICW
  - Western Rivers
- Incorporate Test Bed Lessons Learned
- Public Outreach

## Policy Implementation

- WAMS 2.0
- Public Outreach

## DESIRED OUTCOMES

- Improve Service Delivery of the Mariner
- Improve Mariner Situational Awareness
- Efficient Use of Existing Resources
- Improve Program Management
- Improve Waterway Resiliency
- Inform Capability/Acquisition Decisions



## Improving Service Delivery

- Modernize Physical System
- Incorporate eATON into Design System
- Modernize Delivery of MSI (eMSI)
- Improving Notification of ATON Changes
- Understanding Users Requirements
- Develop Data-driven, Risk-Based Analysis Tool

## Efficient Use of Existing Resources

- Effective use of AFC-43 Funding
- Effective Use of AFC-30 Funding
- Effective Use of AC&I Funding
- Modernize Physical System

## Improve Program Management

- Improved Program Metrics
- Better Information to Ops Cdrs
- Improved Program Oversight
- Improved Program Visual Analytics
- Centralizing Maintenance & Logistics
- Modernize Physical System
- AIS Analysis Support

## Improve Waterway Resiliency

- Digital Lightship
- Incorporate eATON

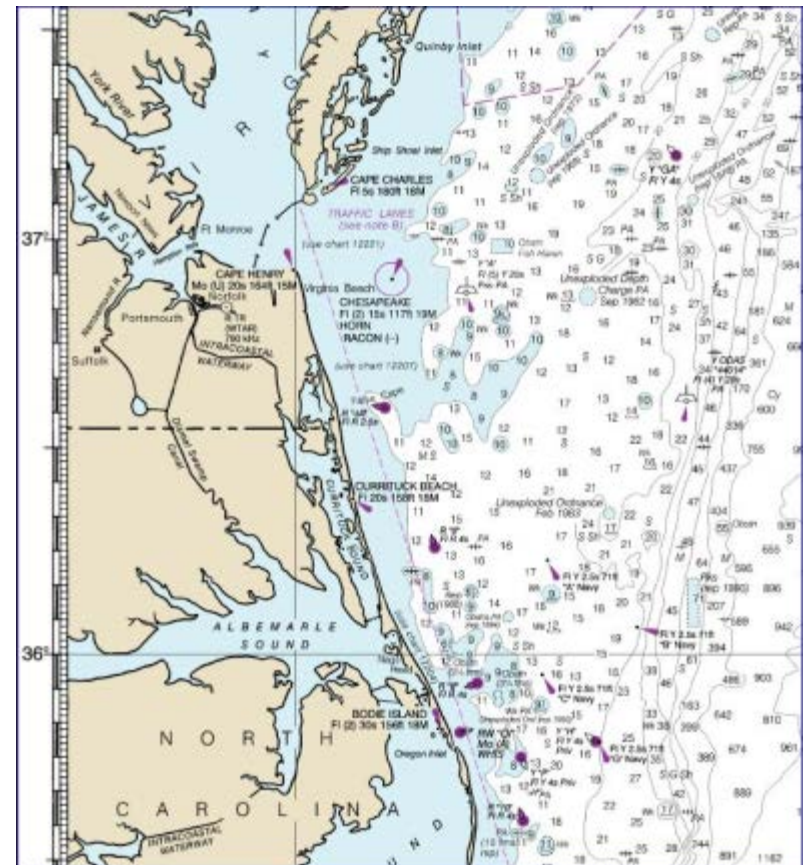
## Informing Capability/Acquisition

- WLB Mid Life
- WLB Repurpose
- WLR/WLIC/WLI Recap
- WLM Mid Life
- NAIS System



### Improving Service Delivery

- Incorporate eATON into system design
- Modernize Delivery of Marine Safety Information
- Modernize physical ATON system – Waterway of the Future
- Improve public notification of ATON changes and proposals.
- Understand current user requirements for U.S. Aids to Navigation System (USATONS)
- Develop Risk Based Analysis and Program Management Tool





## Regulatory/Policy Support

- Expanded AIS carriage regulation 01 March 2016
- RTCM ECS Standards version 6
- NVIC Feb 2016
  - Updated policy allows use of official electronic charts in lieu of paper
  - Majority of commercial users carry acceptable ECS





# Concerns, Challenges and Gaps

---



- Over Reliance on Technology
- Training
- Reaching the Masses
- Cyber Security
- Resources
- GPS Vulnerabilities
- Unmanned Maritime Systems
- Alternative Uses of our Ocean Space –Marine Planning
- Panama Canal Expansion









# CURRENT STATE

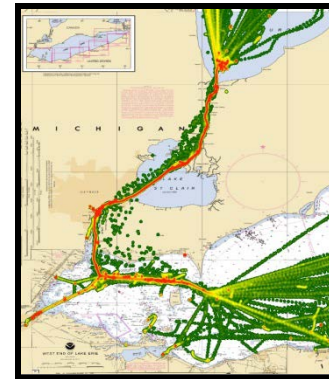
MSI



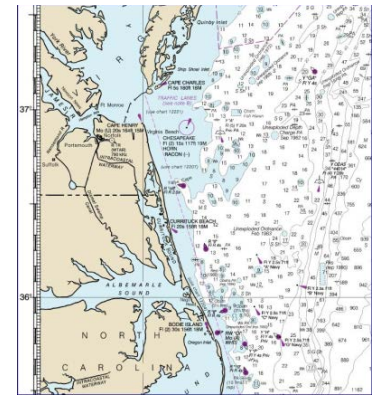
Nautical Pubs



AIS



RNC/ENC



ECDIS/ECS

Physical ATON



Web based  
environmental data

GNSS



GNSS Augmentation





## **BARRIERS**

---

Transmission challenges  
Common Waterway IDs  
Standardized Equipment





## The Way Forward

---

Transmission challenges  
Common Waterway IDs  
Standardized Equipment