

**PML**

Plymouth Marine  
Laboratory

*International efforts, future plans, and  
current challenges of mCDR research*

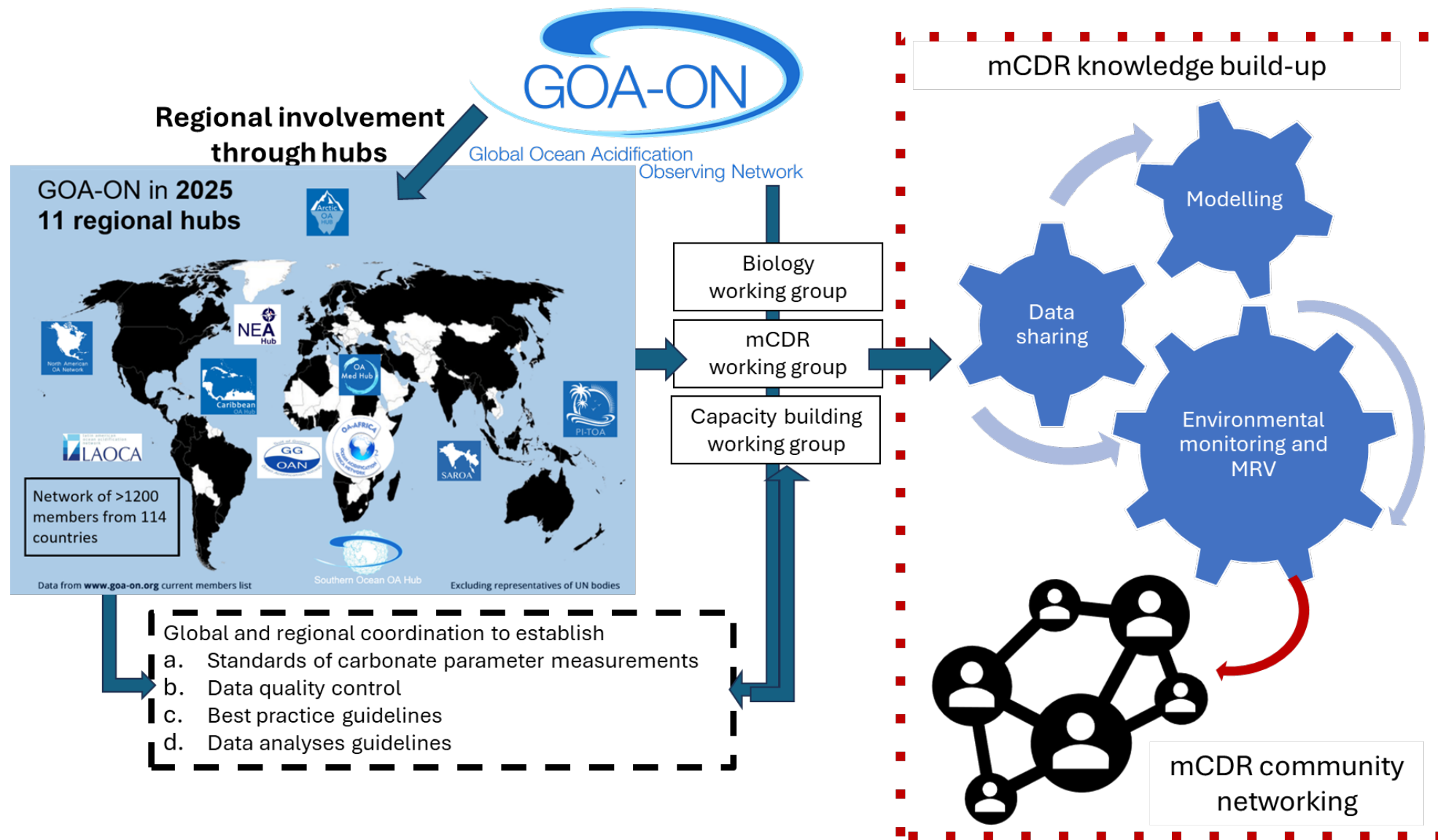
Helen Findlay

Plymouth Marine Laboratory

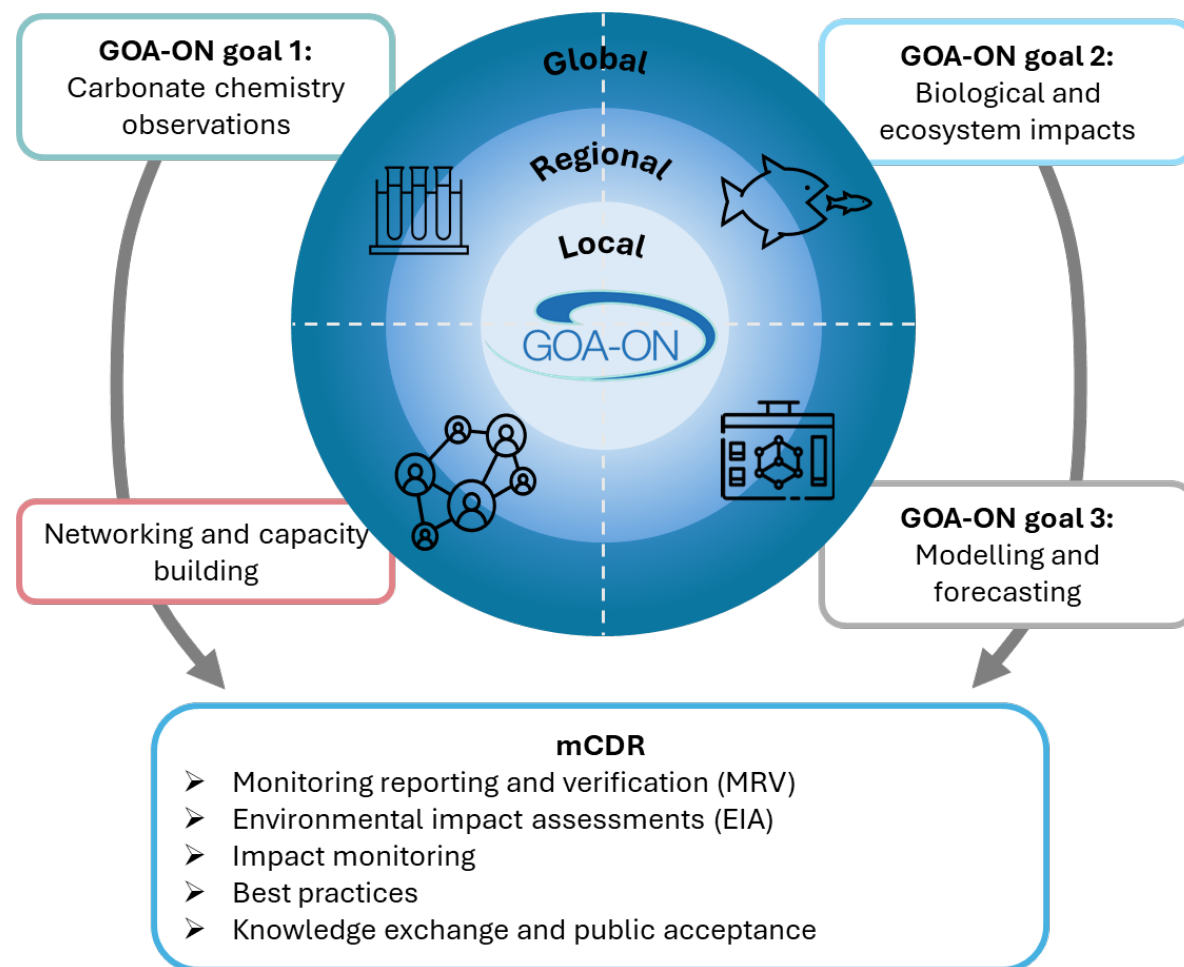
Global Ocean Acidification Observing Network

(GOA-ON) mCDR WG



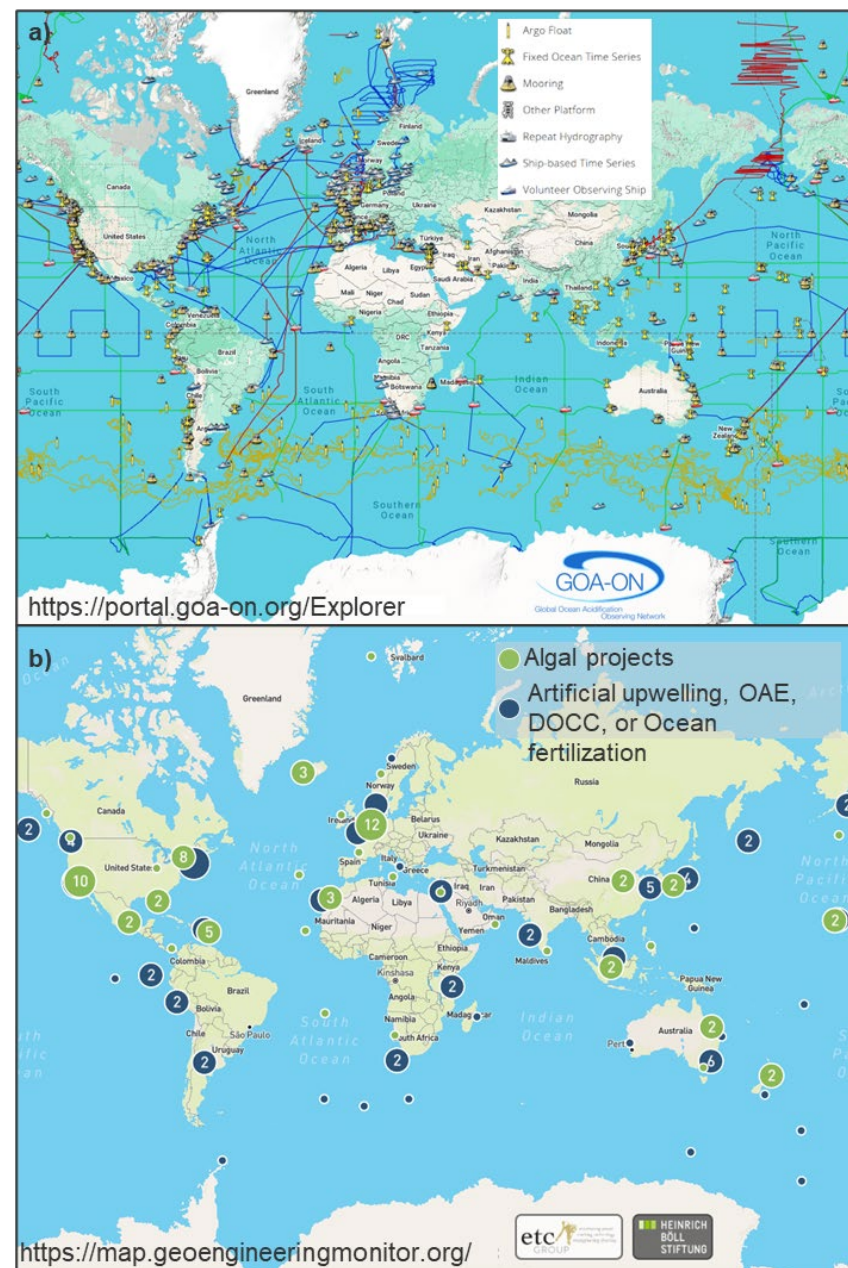


Findlay et al. 2025 *Oceanography*, 38, <https://doi.org/10.5670/oceanog.2025.e308>



## OA Week, mCDR session (TBC – 16<sup>th</sup> October)

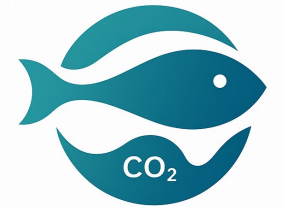
<https://www.goa-on.org/webinars/OaWeek2025/webinar.php>



**ICES Workshop on mCDR interactions with Fish, Fisheries and Aquaculture**; held online September 2024, in person follow up April 2025.

ICES special themed set on [Marine carbon dioxide removal and its interactions with ecosystems, fisheries and aquaculture](#) (deadline for submissions is 13 February 2026 - please share with your networks)

1. State of Knowledge of the Impacts of mCDR to marine ecosystems, fisheries and aquaculture
2. Addressing fisheries and aquaculture environmental impacts and co-benefits framework
3. Best practices for early Rightsholder and Indigenous engagement
4. Cumulative impact assessment framework
5. Blue carbon, mCDR and their interaction with fisheries
6. Policy and regulations for mCDR informed by fisheries and aquaculture
7. Fisheries ecological knowledge
8. Lessons learned from offshore wind, oil, gas, CCS and deep-sea mining \*may be merged with above, still in development
9. Systematic research design framework
10. Concept and status of 'thresholds' for mCDR management
11. mCDR explainer for policymakers and the public



**mCDR interactions  
with Fish, Fisheries  
and Aquaculture**

Group submitted for **UN Ocean Decade endorsement** as a project, under the *Global Ecosystem for Ocean Solutions (GEOS)* programme

Group looking to apply to become a **formal ICES Working Group** (Jan 2026)

- Funding
  - EU call (just closed) for proposals on OAE and MRV
  - International coordinated funding necessary
- Regulations
- Understanding deployment would look at scale – communication
- Implications/impacts beyond immediate surrounding waters



# Thank You

**Plymouth Marine Laboratory**



**PML.AC.UK**



**+44 (0)1752 633 100**



**hefi@pml.ac.uk**



Scan to view our website

