



VOC injection into a house reveals large surface reservoir sizes in an indoor environment

Jie Yu^{a,1} , Pascale S. J. Lakey^{b,1} , Jenna C. Ditto^c , Han N. Huynh^{d,e} , Michael F. Link^f, Dustin Poppendieck^f , Stephen M. Zimmerman^f, Xing Wang^g, Delphine K. Farmer^h , Marina E. Vanceⁱ, Jonathan P. D. Abbatt^{a,2} , and Manabu Shiraiwa^{b,2}



Jie Yu

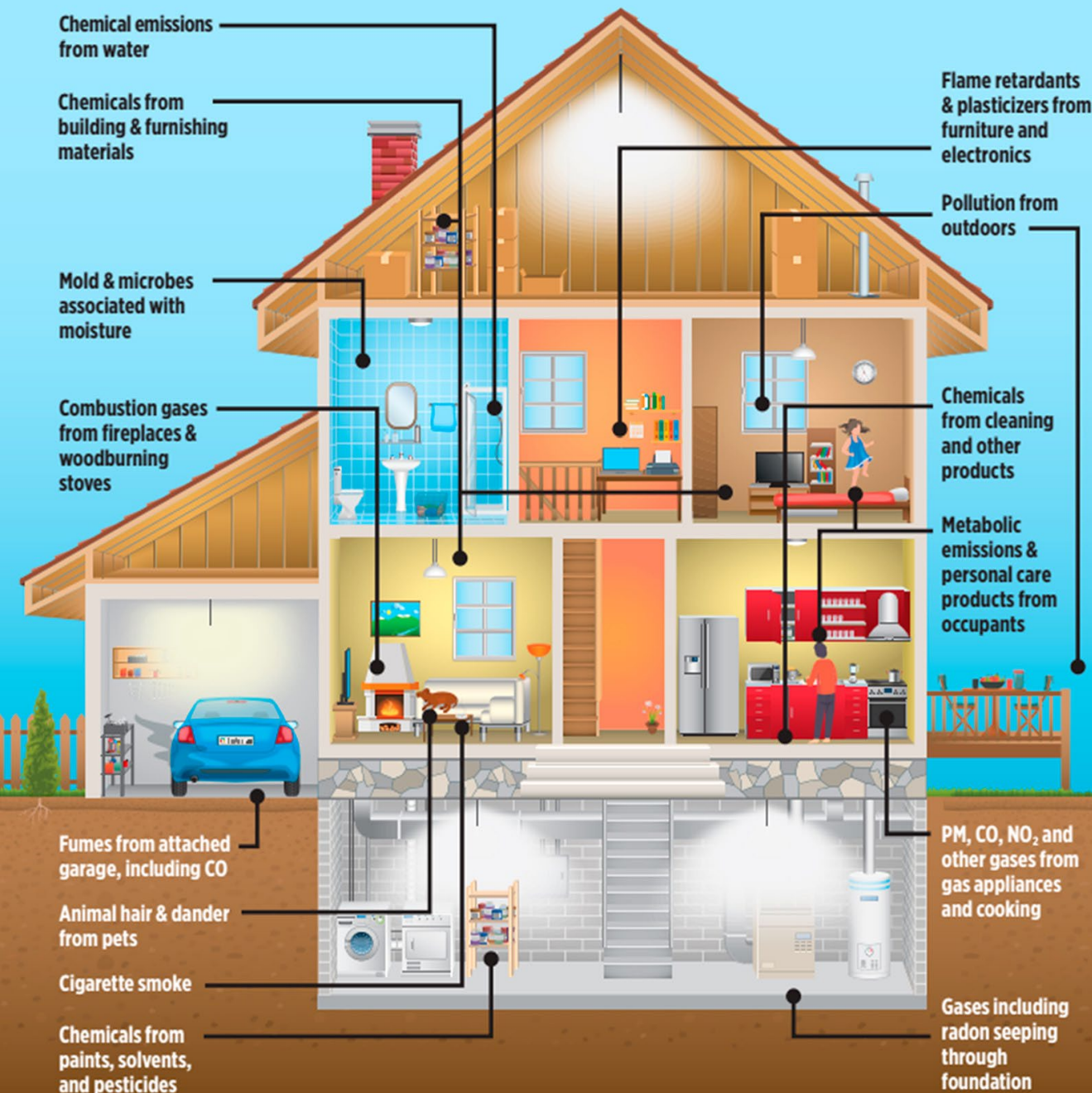


Pascale Lakey

The Chemical Assessment of Surfaces and Air (CASA) Experiment (2022) was funded by:



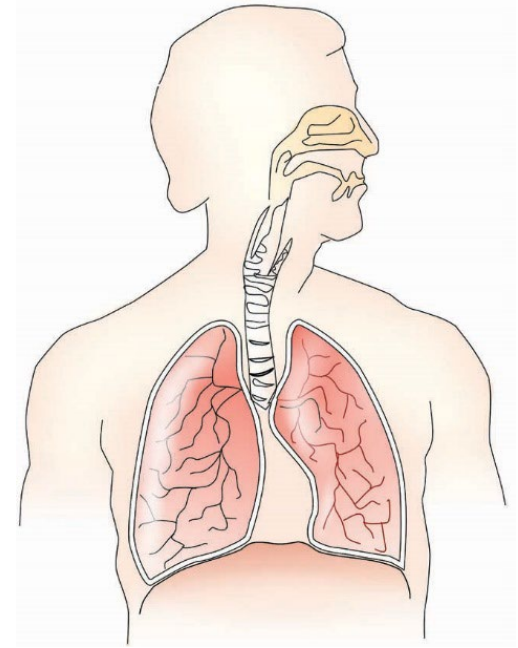
**ALFRED P. SLOAN
FOUNDATION**



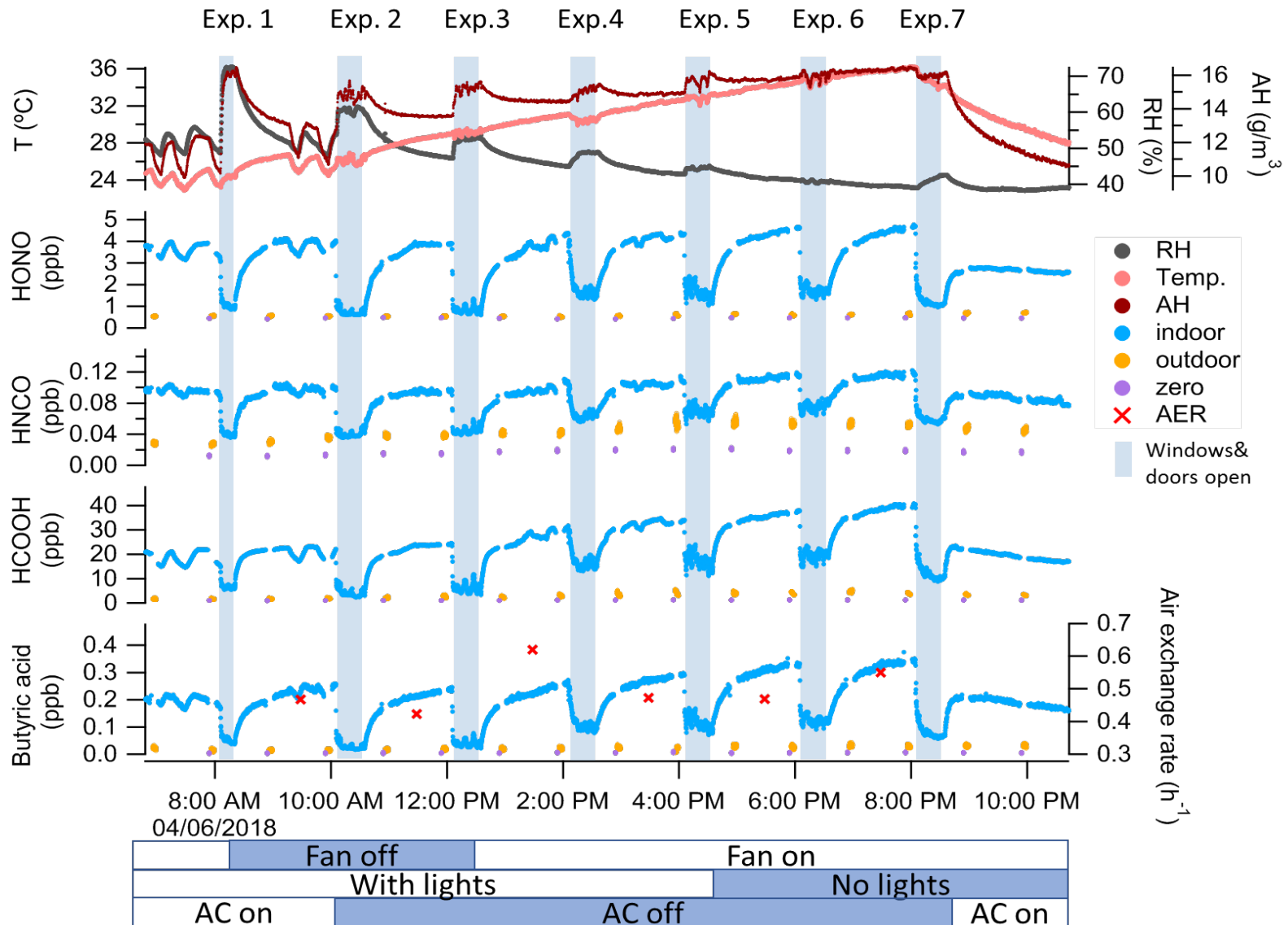
There are many chemicals around indoors

National Academy of Sciences, "Why Indoor Chemistry Matters", 2022

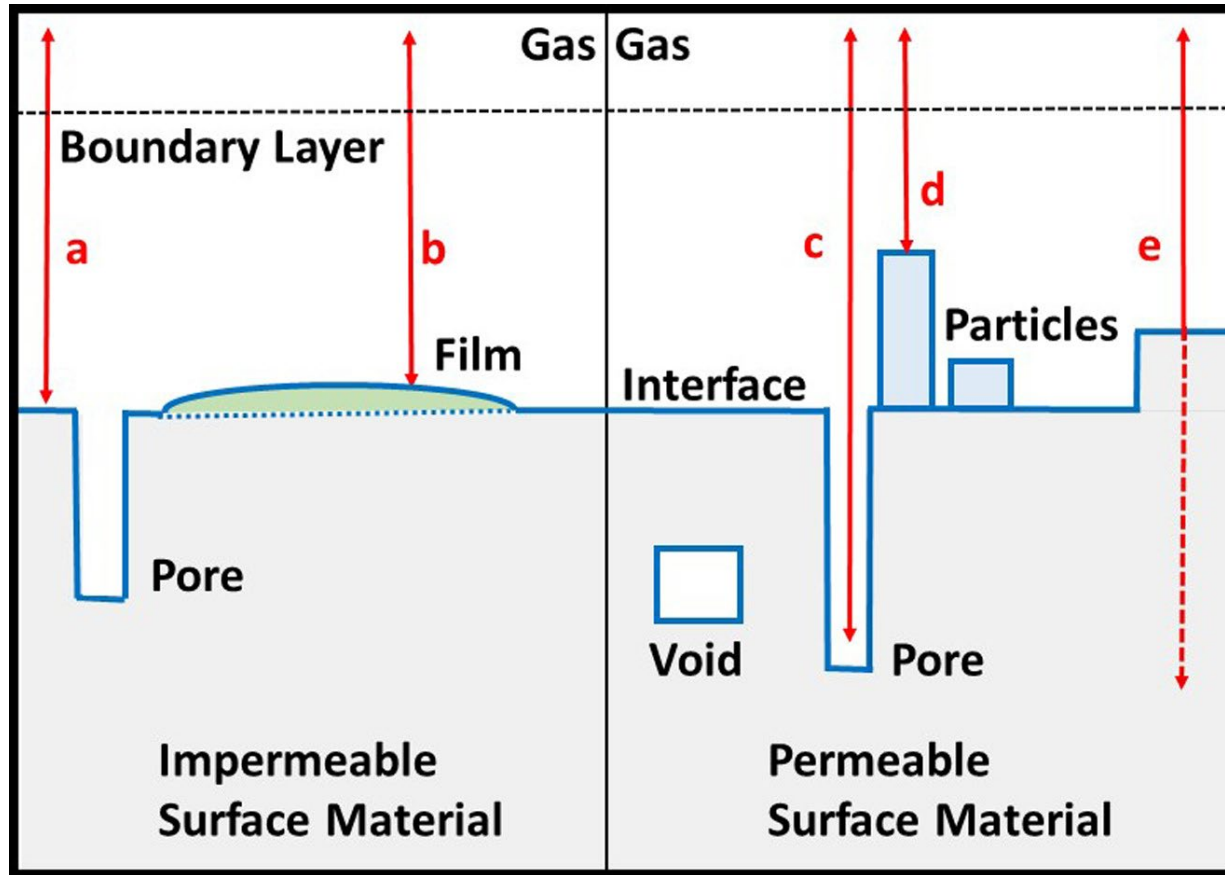
*We get most of our non-dietary
chemical exposure indoors*



Enhanced Ventilation experiments at HOMEChem (2018)

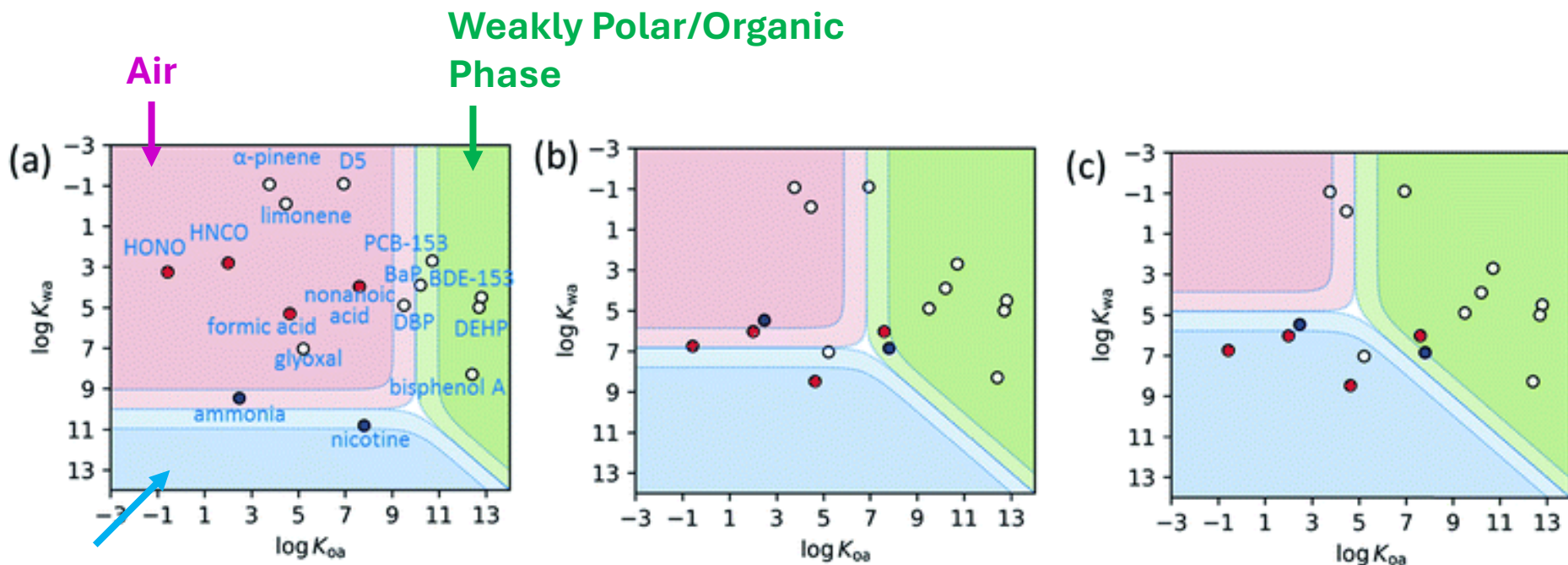


Indoor surfaces, gas-surface partitioning



There are many components of indoor surface reservoirs that interact with the gas phase

In what phase do molecules reside indoors?



Partitioning in a polluted outdoor environment

Partitioning to thin films indoors (50 nm thick, pH 7)

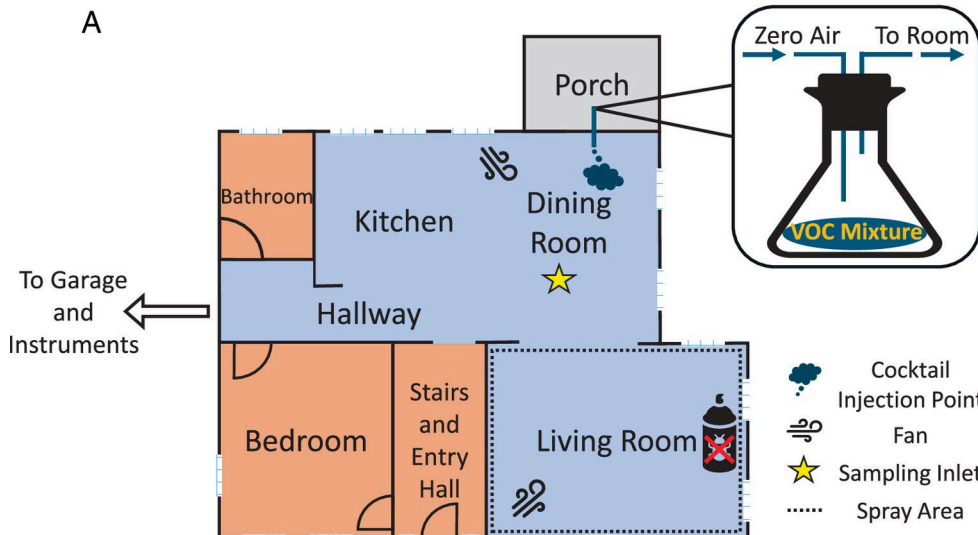
Partitioning to much larger surface reservoirs indoors (5 μm thick, pH 7)

Molecules that are predominantly gaseous outdoors undergo considerably more surface partitioning indoors

VOC emissions into a NIST test house during CASA



Goal: *To determine the VOC partitioning capacity of indoor surfaces*



Method: *Time-resolved measurements of VOCs injected into a house are used to constrain a gas-surface partitioning model*

Online measurements at CASA

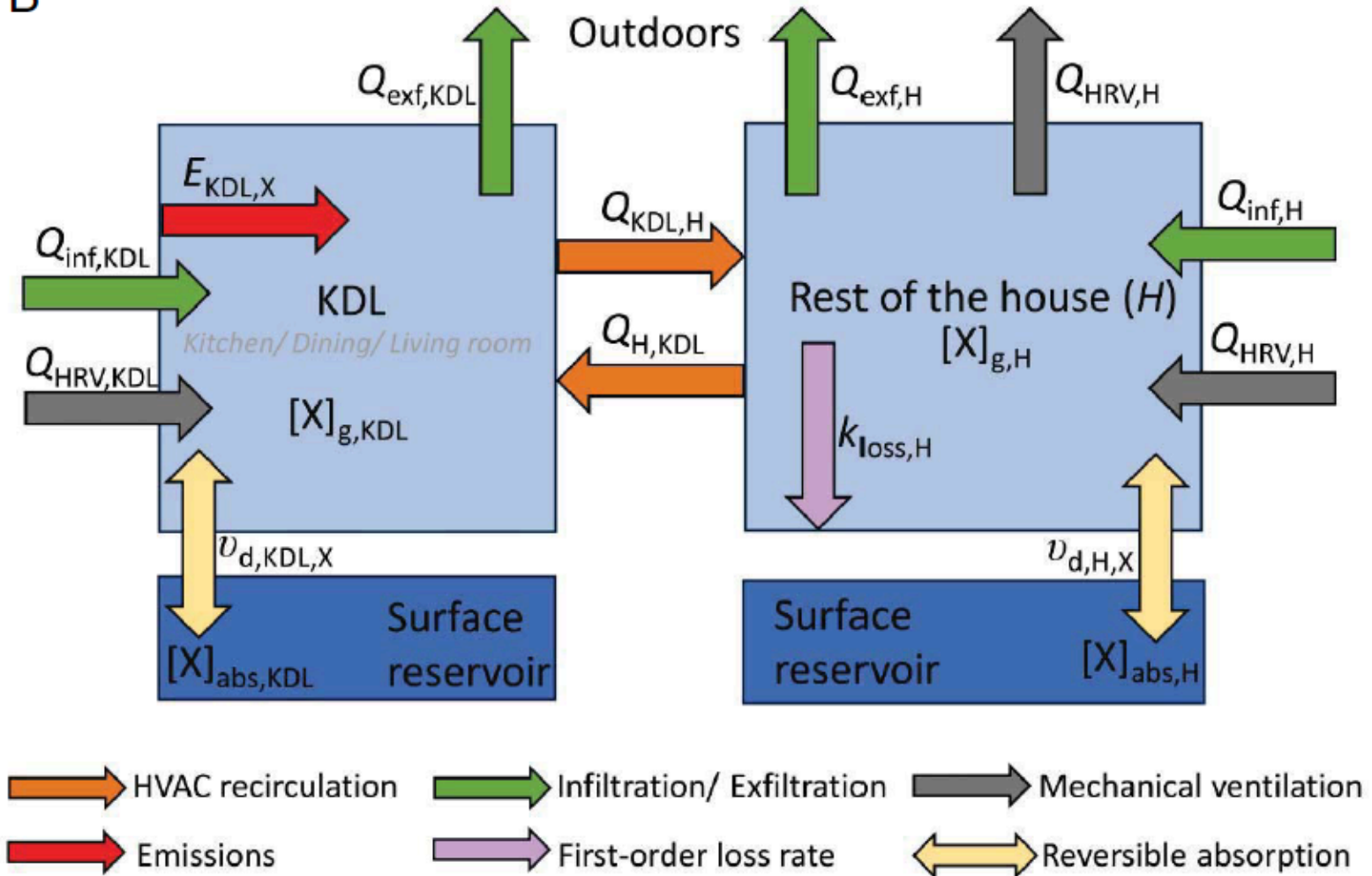


GC-Vocus
PTR-ToF-
MS



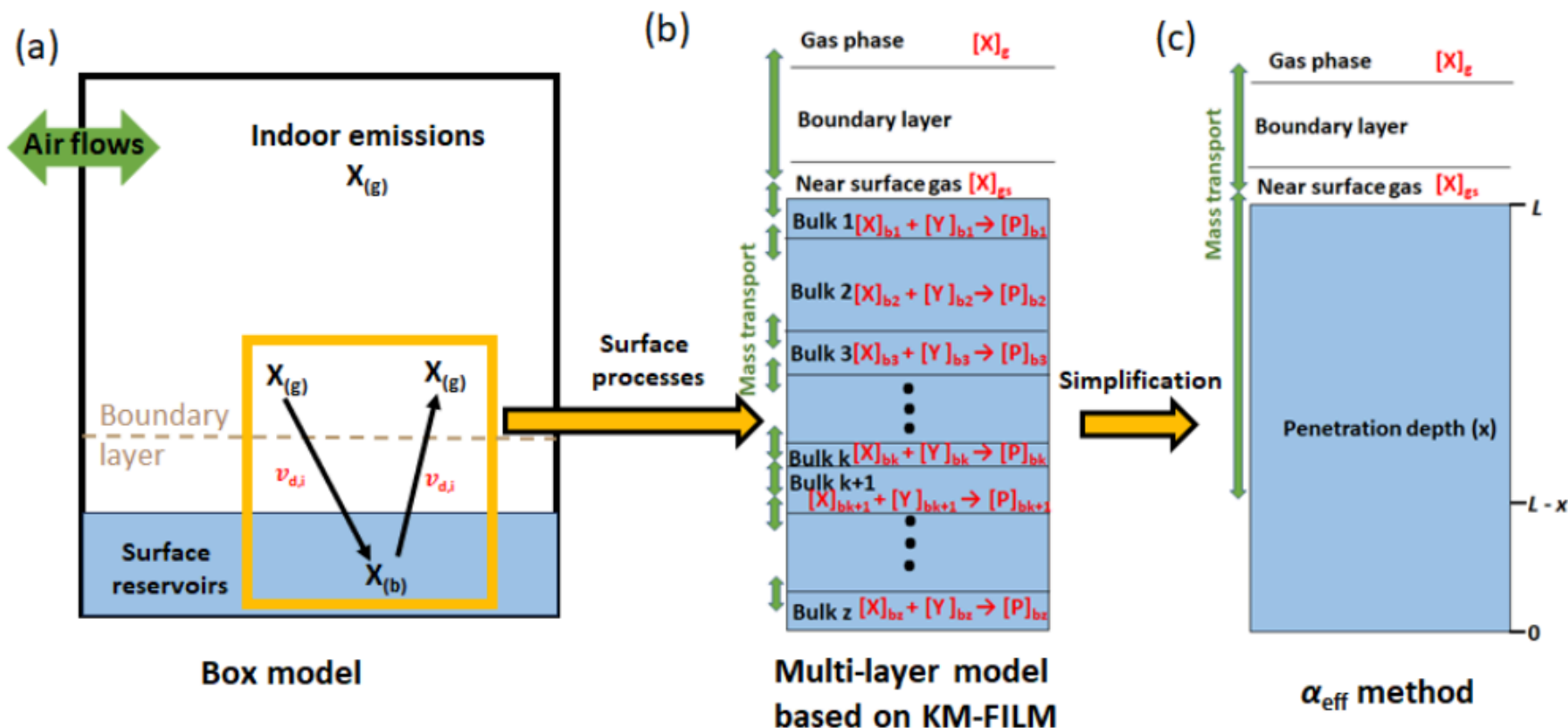
Indoor Two-Box Model

B



Two boxes: KDL (where VOCs were injected) & the rest of the house
 Flows are measured/calculated or estimated based on CO₂ decay (D. Poppendieck)

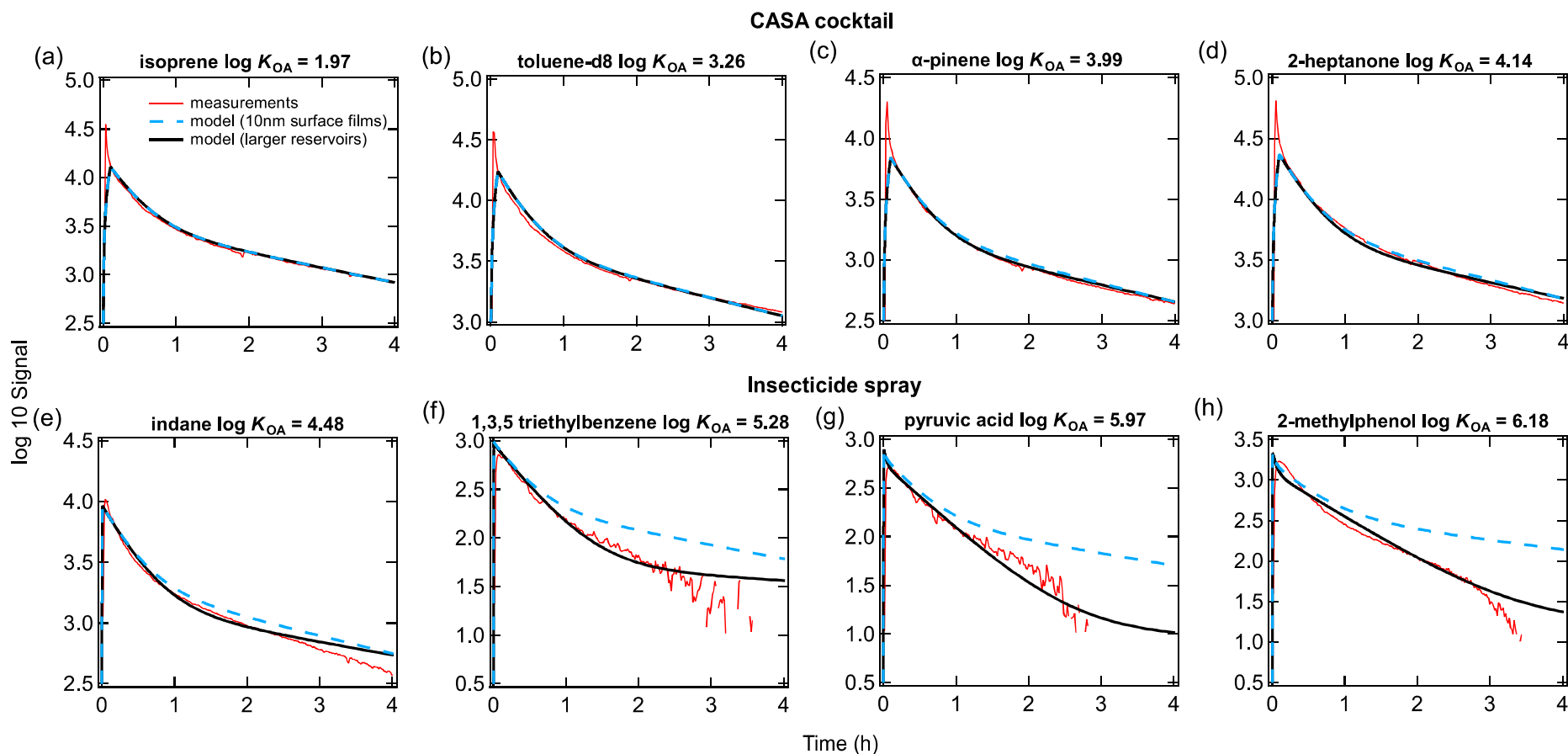
Modeling Partitioning to Surface Reservoirs



Surface partitioning of indoor compounds is treated as fluxes, either by explicitly treating bulk diffusion or by applying effective mass accommodation coefficient.

Surface organic films are ubiquitously present with 10's of nanometer thick (Weschler & Nazaroff, 2017). Is this major surface reservoir?

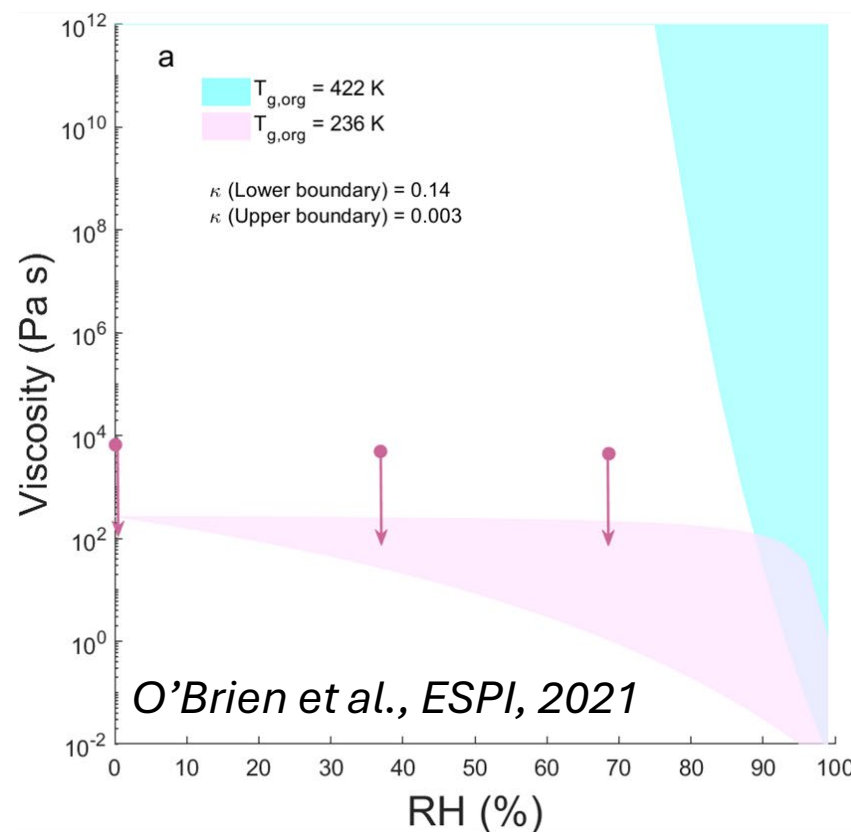
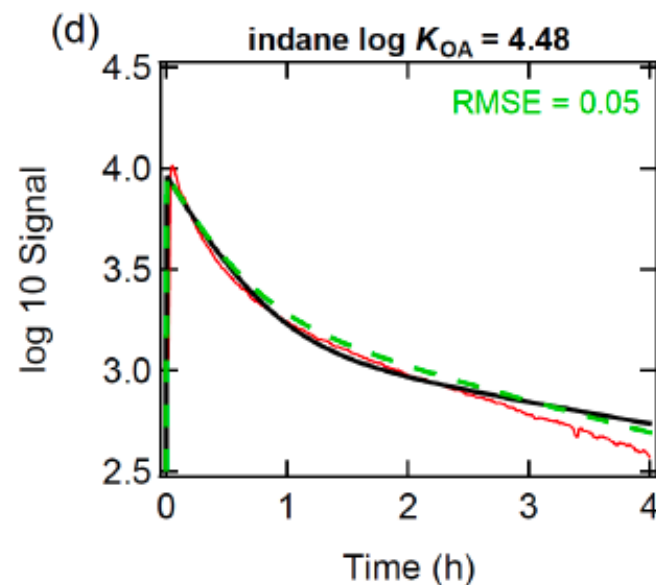
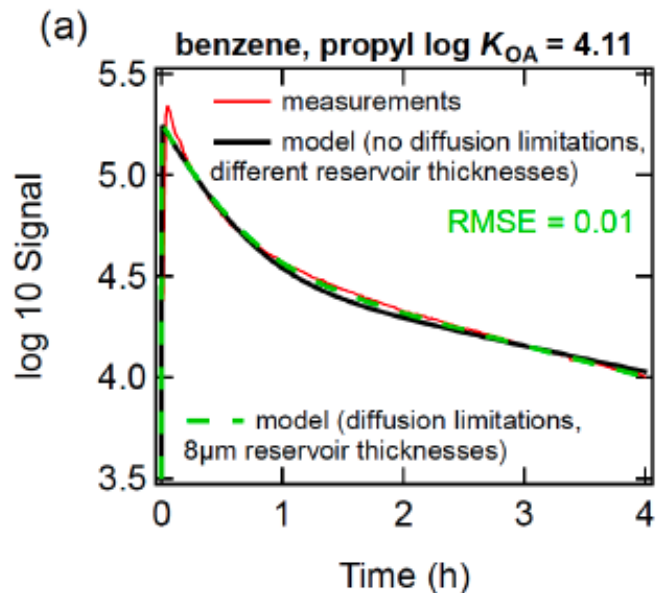
Measured vs. Modeled VOC Decay



VOCs ($\log K_{OA} \sim 2-4$) do not partition significantly to indoor surfaces.

Decay of SVOCs ($\log K_{OA} \sim 4-6$) reproduced with large surface reservoirs with **large thickness (200 nm in KDL, 8 μm in rest of house)**, indicating that **permeable/porous materials such as painted surfaces/wood are likely the major surface reservoirs.**

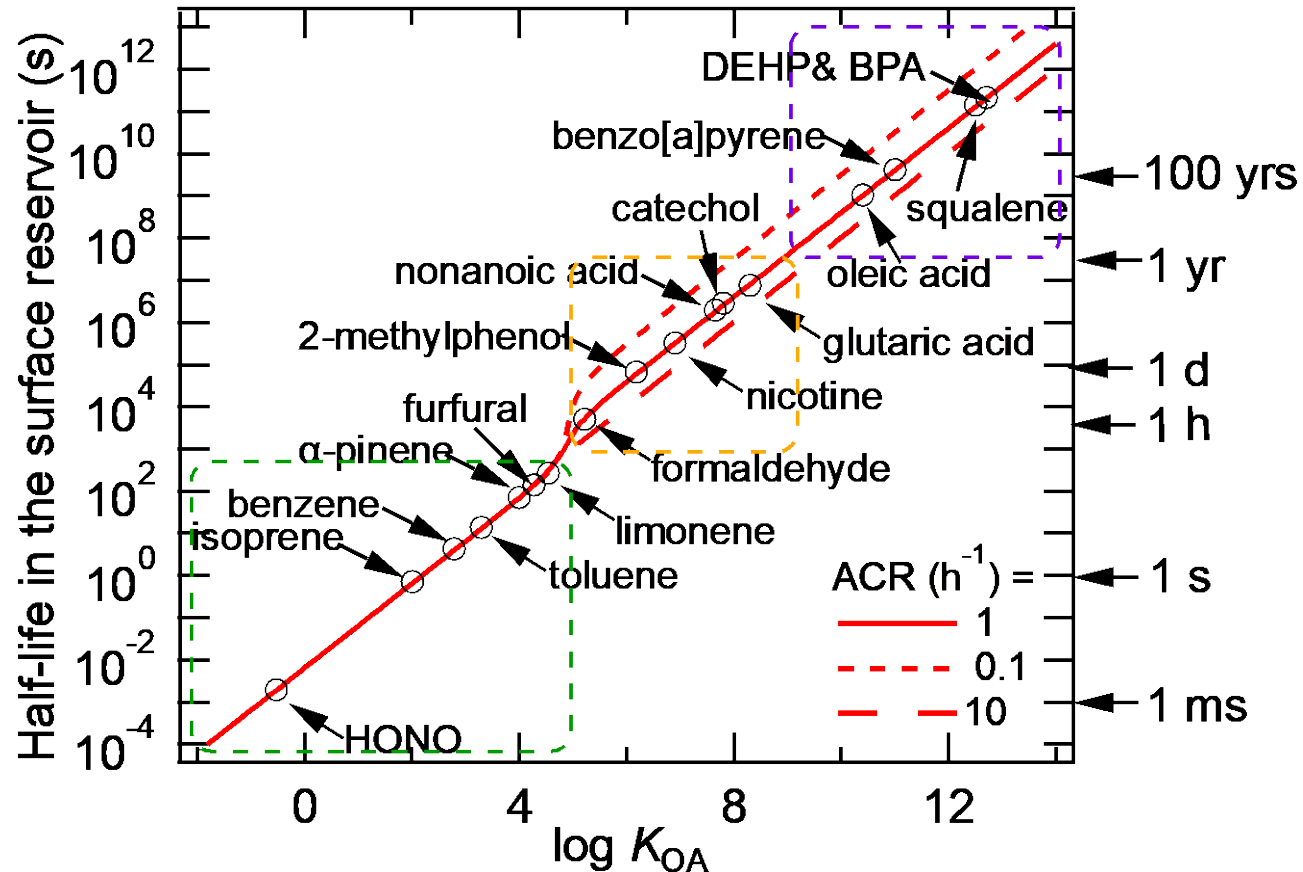
Potential Bulk Diffusion Limitations?



Data can be fitted with an thickness of 8 μm throughout the house with bulk diffusivity of $10^{-13} \text{ cm}^2 \text{ s}^{-1}$ (consistent with HOMEChem) in KDL and $>10^{-11} \text{ cm}^2 \text{ s}^{-1}$ in the rest.

Take Home Messages

With a large partitioning capacity, organic contaminants will have much longer indoor residence times. Enhanced ventilation may not be sufficient to remove some of them.



$\log K_{OA} < 4.5$: predominantly in the gas phase or exist in polar reservoir

$4.5 < \log K_{OA} < 9$: Significant lifetime in reservoirs, as modulated by ACR

$9 < \log K_{OA}$: Practically impossible to remove with ventilation