

The Role Denver Health has Played in the SDoH

NASEM FORUM ON MENTAL HEALTH AND SUBSTANCE USE DISORDERS

DONNA LYNNE

July 1, 2025



DENVER HEALTH

est. 1860

FOR LIFE'S JOURNEY

Denver Health at-a-glance

1 IN 2
DENVER BABIES
BORN AT
DENVER HEALTH



98%
MAJOR TRAUMA
SURVIVAL RATE



MORE THAN
130
MEDICAL
SPECIALITIES



Denver Health Paramedics answered nearly

133,000

911 CALLS FOR
EMERGENCY MEDICAL SERVICES



19
SCHOOL-BASED
HEALTH CENTERS



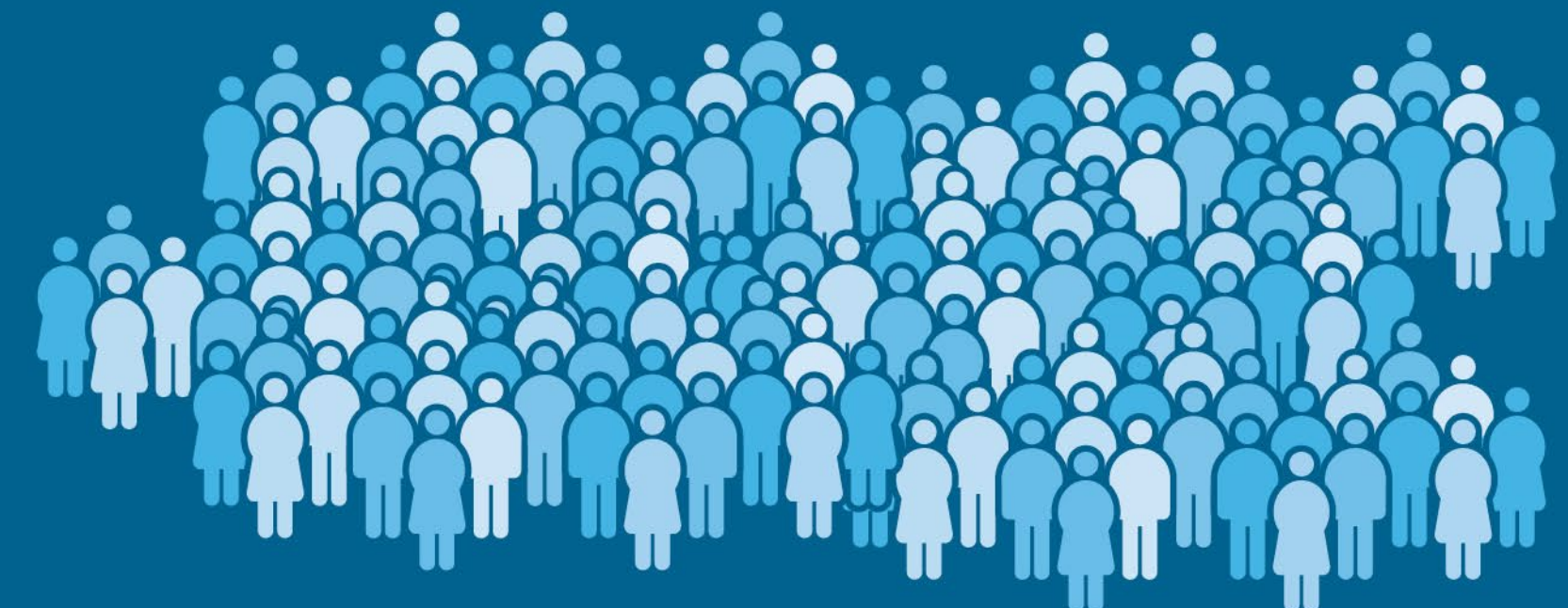
10 COMMUNITY
HEALTH CENTERS



88,000
BEHAVIORAL
HEALTH PATIENTS



1.4 MILLION
PATIENT VISITS

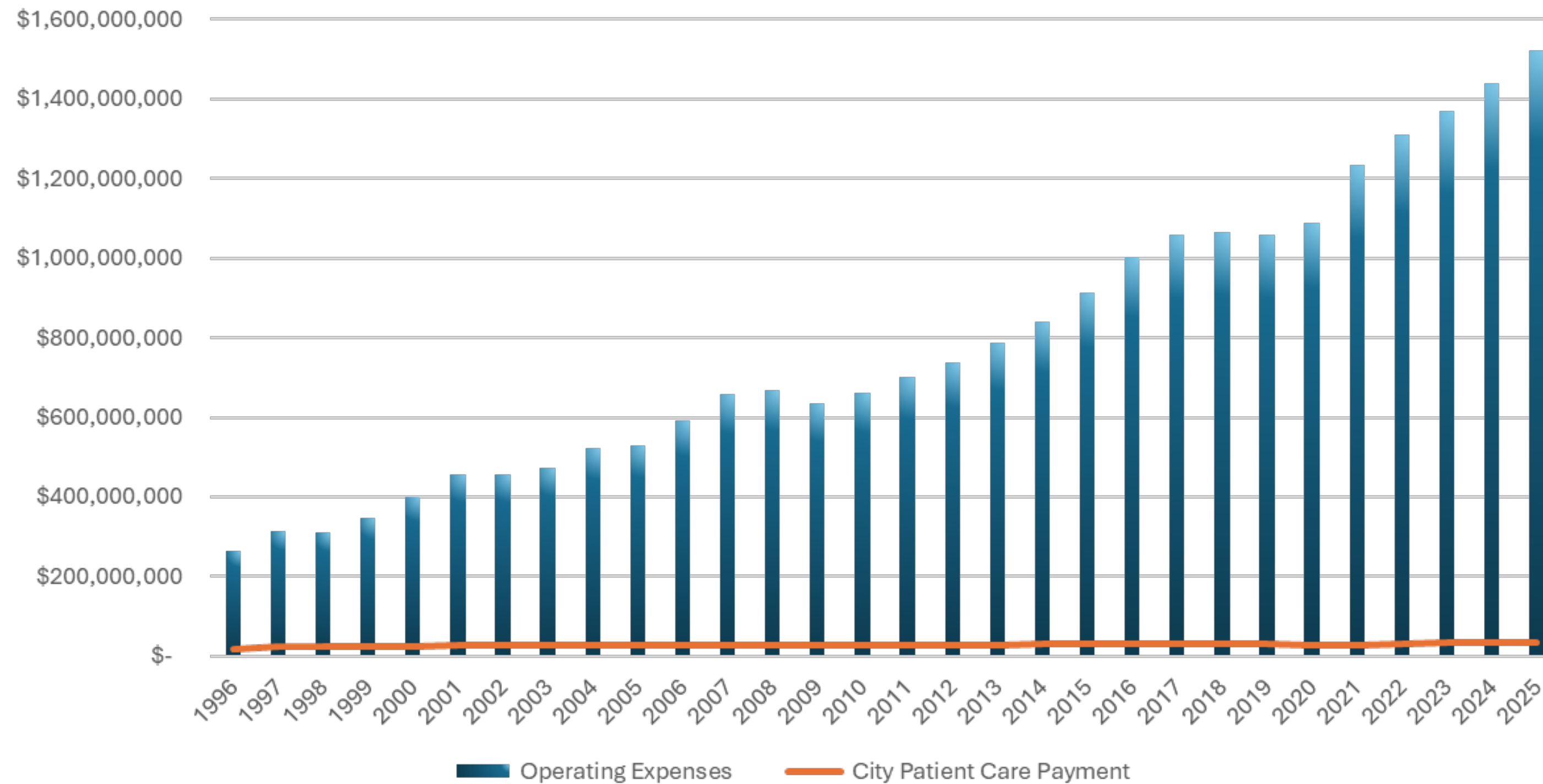


Payer Mix for Denver Area Hospitals - 2024

Hospital/Health System	Commercial	Medicaid	Medicare	Self Pay	CICP/Other
Denver Health	14.94%	48.64%	19.80%	5.41%	11.20%
UC Health	29.19%	20.29%	42.13%	2.76%	5.63%
HCA Healthcare	30.00%	20.77%	39.67%	4.32%	5.25%
Common Spirit Health	25.81%	19.63%	47.16%	2.65%	4.75%
Intermountain Health	28.49%	17.74%	47.94%	2.21%	3.61%
Advent Health	36.02%	14.19%	44.51%	2.96%	2.31%
Banner Health	23.71%	23.92%	45.70%	3.08%	3.58%
Boulder Community Health	36.22%	9.92%	48.10%	0.71%	5.06%
Children’s Hospital	42.75%	44.28%	0.29%	1.01%	11.67%

Denver Health

Operating Expenses vs City Patient Care Payment



Denver Health is Very Large:
Denver Health's 2024 budget is \$1.5 Billion

- City's General Fund is \$1.76B
- DPS's budget is \$1.9B

Health care has become more expensive in the last few years

- Labor
- Supplies
- Pharmaceuticals



DENVER HEALTH™

est. 1860

FOR LIFE'S JOURNEY

MORE THAN A HOSPITAL

Housing

Opportunities for Youth

Food Security

Transportation

Advocacy and Activism

Literacy

Language Services

Workforce Development

Research

Firearm Safety

Enrollment Services

Mobile Health Units

Education and Training for the Next Generation of HCWs



Health Related Social Needs Screening

Encounter Setting

(All)

Empanelment Status

(All)

Medical Home By Division

(All)

Risk Domain

HOUSING INSECURITY

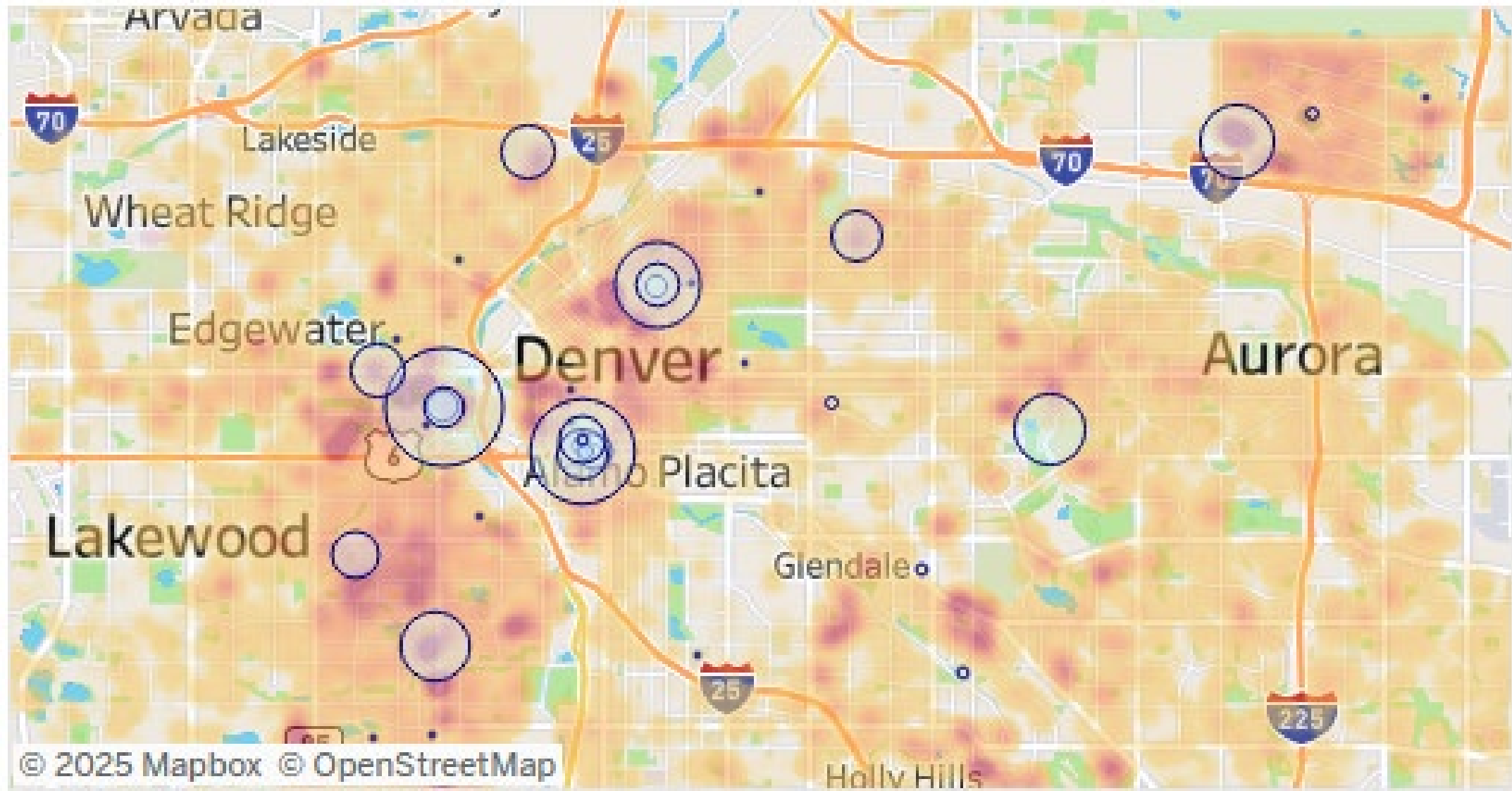
Child Or Adult

(All)

Race Ethnicity

(All)

Heat Map of Patients With Needs by Home Address
Click on Map to Go to HRSN Geographics Page



HRSN Screening

- Can identify patients that are having housing hardship, not just homelessness.
- This hot spotting identifies what regions of the city our patients with needs are coming from.
- Currently screen in the in patient and outpatient setting.
- Can help connect patients to resources.

Homeless Patients 2022-2024

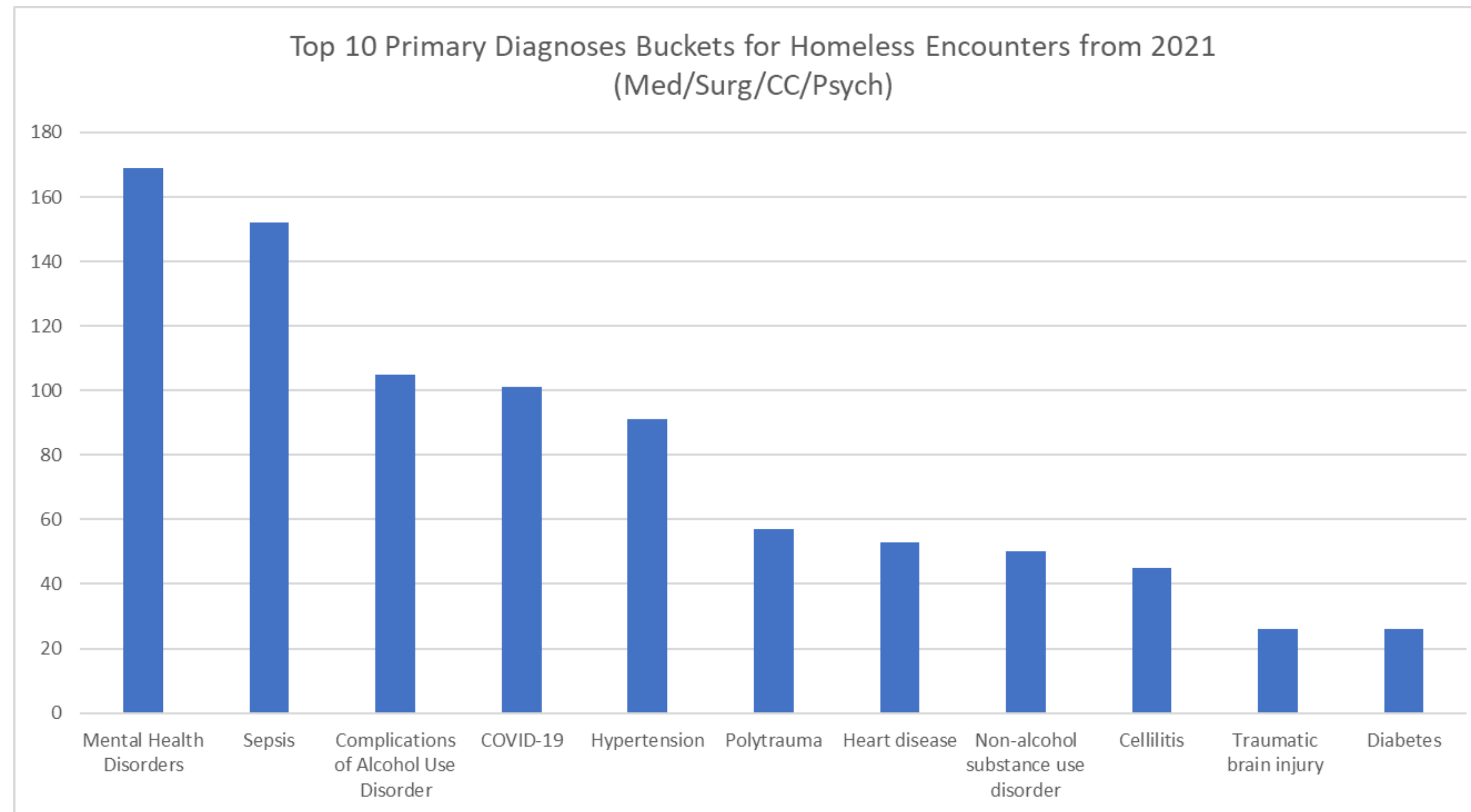
Increase in Patients Experiencing Homelessness



Increase in Visits



Top Diagnoses for Hospital Encounters Among PEH



DENVER HEALTH™

est. 1860

FOR LIFE'S JOURNEY

Data courtesy of Mara Prandi-Abrams

What Happens When a Hospitalization Becomes an Opportunity for Connection?



DENVER HEALTH™
est. 1860
FOR LIFE'S JOURNEY

Homeless Registry on Epic

Sidebar Summary

PDMP Review

←

↺

📄

📄 Index

📄 IP Medication History

📄 Orders Mgmt

More ▾

Homeless Registry Su... 🔍 ⚙ ▾

Current as of: 11/18/2024 10:52 AM ?

Homeless Identification Factors

This score compiles the different ways a patient is identified as homeless

3

High Risk

Factor	Value
Homeless Address	Yes
Address = Homeless Shelter/Service	No
Homeless Registration Status in Last Year	No
Homeless Problem List or Visit Diagnosis in Last Year	Yes
IP RN Assessment 'Type of Residence' = 'Homeless' in Last Year	Yes
AHC/HRSN/SDH 'Living Situation' = 'Homeless' in Last Year	No



Providing Housing to Our Patients

34 units

22 People through 655 Broadway (since Dec 2023)

375 People through the Recuperative Care Center (Since Feb 2023)

What our patients say about these programs:

- "This program saved my life, it really did."
- "This is recognition of people's last chance."
- "I used to use the emergency room as a place to survive, now I don't have to."
- "I've been applying for section 8 for 30 years and was never selected- now I finally have a home."



655 Broadway

14 units dedicated to Denver Health
96 total dedicated to low-income
older adult.



Stout Street Recuperative Care Center

20 Beds



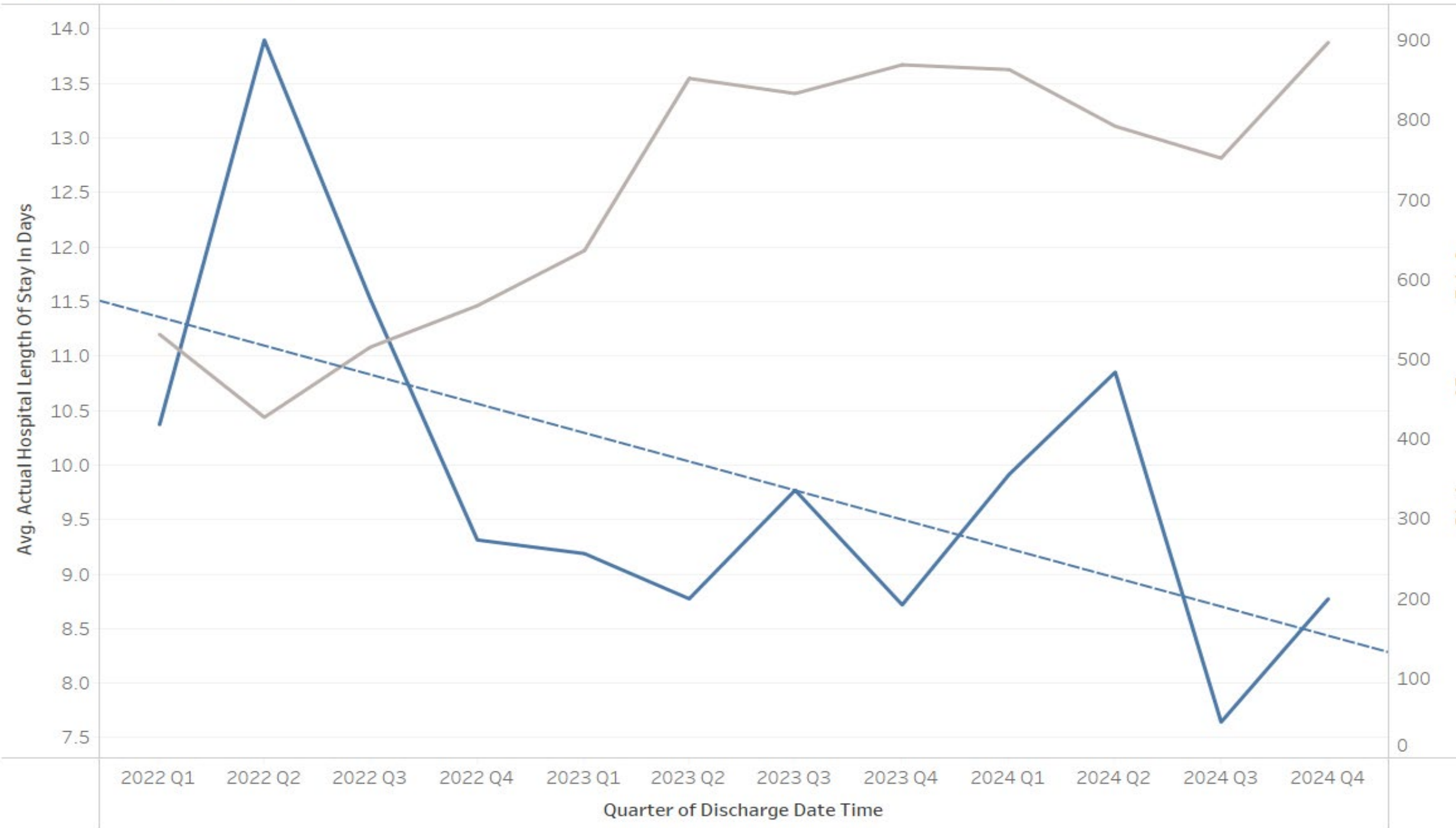
DENVER HEALTH™

est. 1860

FOR LIFE'S JOURNEY

Outcomes Post Implementation

Quarterly Average Length of Stay (LOS) for Patients Experiencing Homelessness
vs.
Number of Inpatient Encounters



Decreased Length of Stay

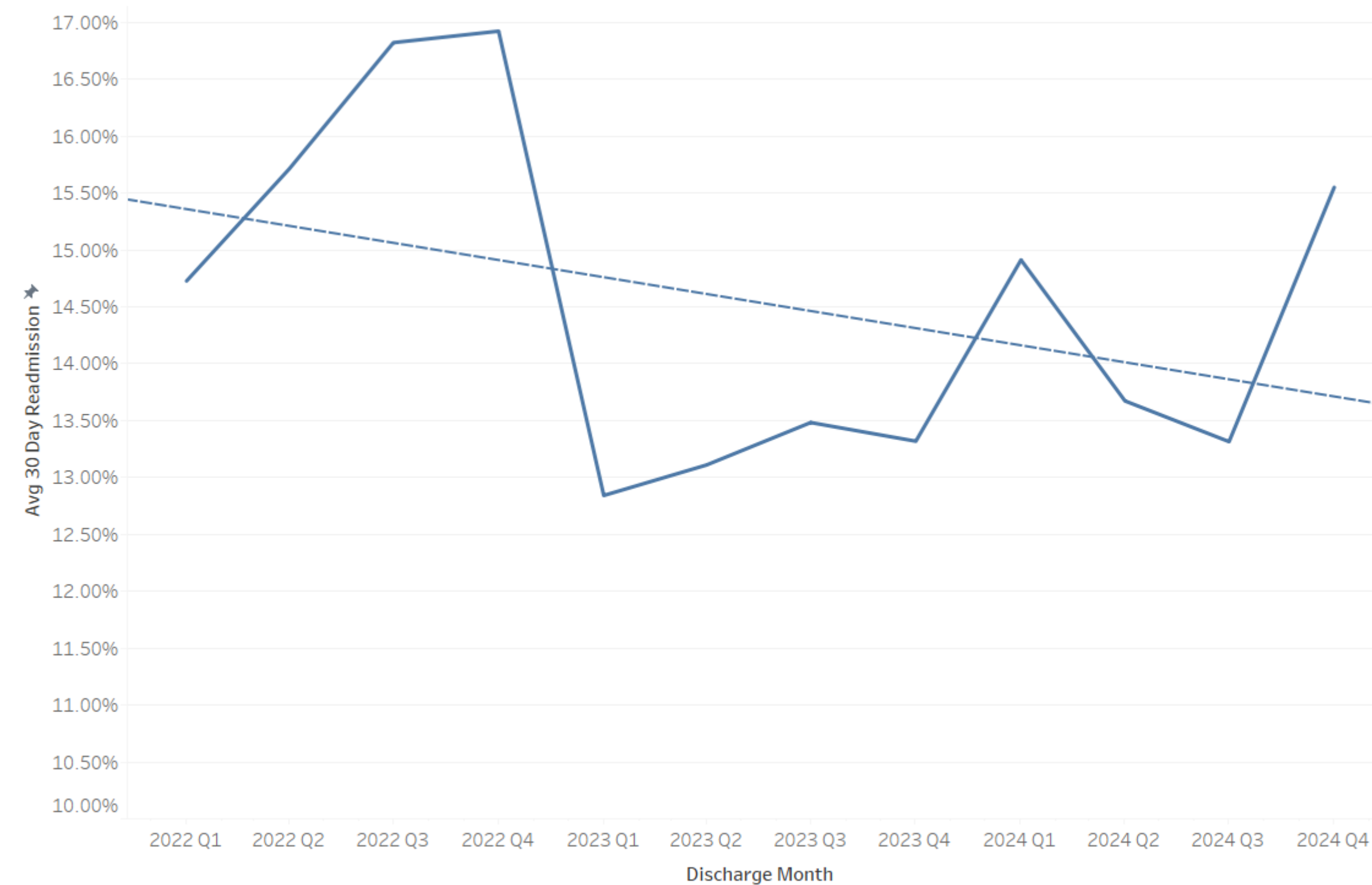
- Grey line is PEH encounters
- Blue line is the Average Length of Stay
- Full implementation of registry March of 2023



Outcomes Post Implementation Cont.

Average 30 day readmission rate for Patients Experiencing Homelessness

Note: Only includes readmissions to Denver Health, not other hospitals



Decreased Length of Readmissions

- Spikes during the cold months.
- Overall trend – Decrease from 15.5% to almost 13.5%



DENVER HEALTH™

est. 1860

FOR LIFE'S JOURNEY

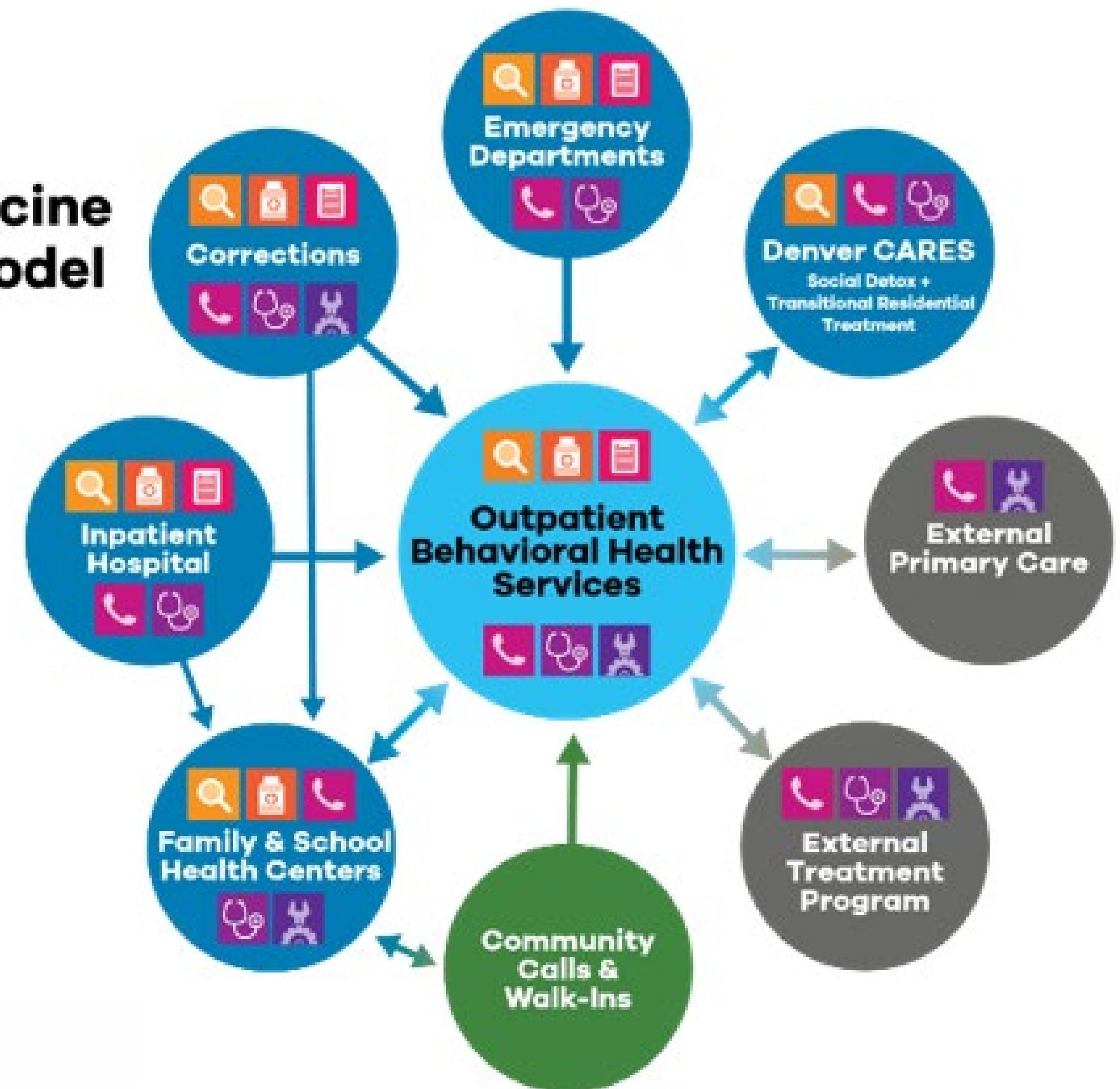
GOAL – To coordinate the essential health services for persons with substance use disorders.

No wrong door approach.

Provide innovative prevention, treatment, research and education to our patients and the community.

Center for Addiction Medicine Hub & Spoke Model

-  Identification/Diagnosis
-  Opioid Induction
-  Outpatient Behavioral Health Services Intake
-  Referral
-  Treatment
-  Opioid Maintenance



DENVER HEALTH™

est. 1860

FOR LIFE'S JOURNEY

CAM Academy

The Center for Addiction (CAM) supports Denver Health and its partners

The Center for CAM Academy provides training and technical assistance on comprehensive trauma-responsive substance use disorder treatment for Colorado and the surrounding regions.

- trauma responsive care
- compassionate care for substance use disorder
- technical assistance on behavioral health and substance use concerns in pediatric emergency medical settings



DENVER HEALTH™

est. 1860

FOR LIFE'S JOURNEY

Thank You!



DENVER HEALTH™
— est. 1860 —
FOR LIFE'S JOURNEY