

SESSION II: UNPACKING THE MEDICARE HOSPICE BENEFIT IN THE CONTEXT OF SERIOUS ILLNESS CARE

Session Moderator: Joseph Shega, MD



The Medicare Hospice Benefit

Individualize Care Plan Focused on “What Matters Most”



Interdisciplinary
Team of Hospice
Professionals



Home Medical
Equipment



Medication



Bereavement
Support



Routine
Home Care



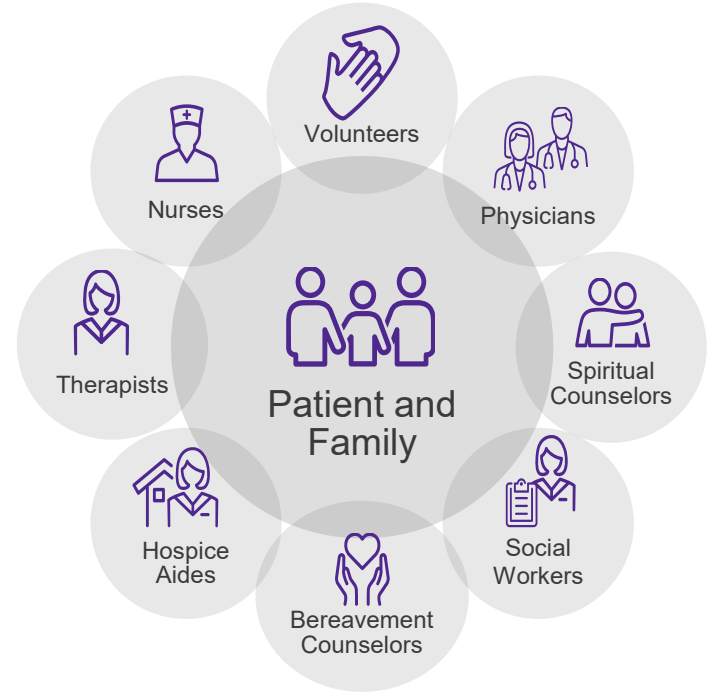
Inpatient Care



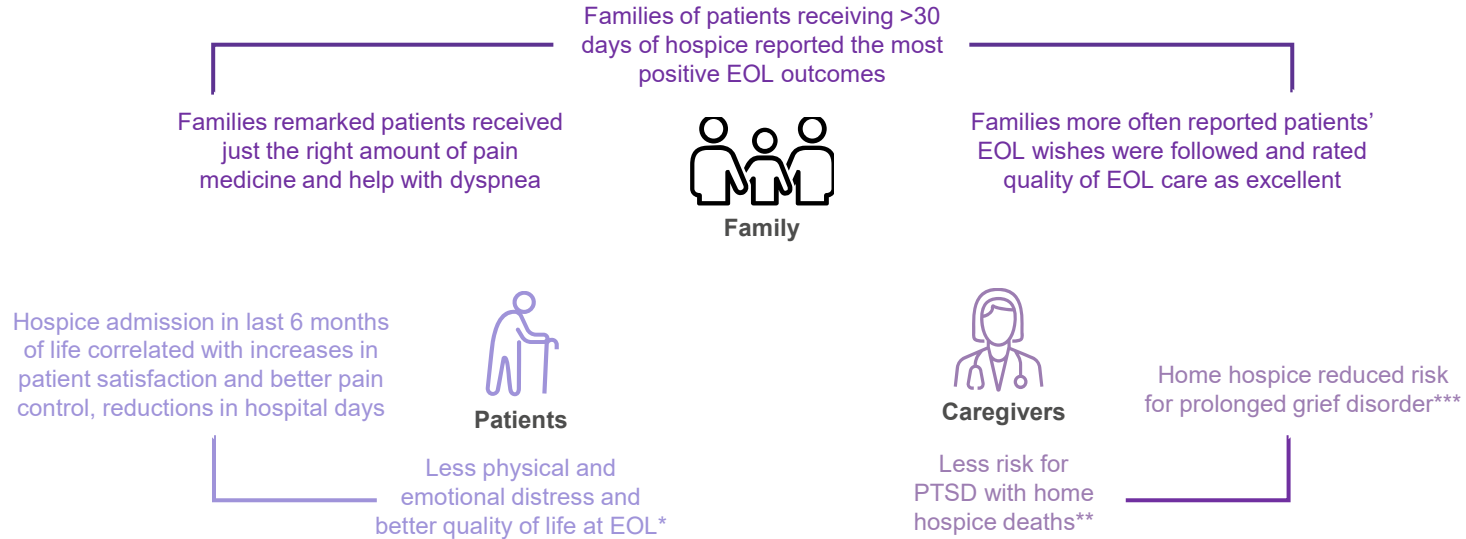
Continuous
Care



Respite Care



Hospice Defines Quality End of Life Care to Patients, Families, and Caregivers



*Cancer patients, when comparing death in hospital to death in hospice **Compared to death in ICU ***Compared to hospital deaths

Value of Hospice in Medicare: A NORC Analysis

Disease Group	No Hospice	Hospice						
		< 15 Days	15 – 30	31 – 60	61 – 90	91 – 180	181 – 266	> 266
ALL	\$67,192	4%	-5%	-9%	-12%	-14%	-10%	-12%
Circulatory	\$66,041	7%	-4%	-8%	-10%	-11%	-8%	-10%
Cancer	\$76,625	10%	-1%	-6%	-9%	-13%	-14%	-20%
Neuro-degenerative	\$61,004	12%	-6%	-9%	-11%	-11%	-5%	-4%
Respiratory	\$77,892	-2%	-11%	-14%	-17%	-19%	-18%	-22%
CKD/ESRD	\$82,781	1%	-14%	-21%	-24%	-24%	-23%	-27%

At 1 year hospice total cost of care is 3.5 billion less than non hospice

- Spending is greater than non-hospice users
- Spending is less than non-hospice users
- No Difference/ Not Statistically Significant