

Aeronautics and Space Engineering Board

Aircraft Noise Reduction

Kallie Glover
Performance Engineer
Delta Air Lines



Outline

- Industry Efforts
 - Airport Initiatives
 - Community and Committee Involvement
 - Fly Quiet Program
 - Flight Operations
 - Fleet Technology

Airport Initiatives

- Fort Lauderdale **FLL**
 - Part 150 Study Technical Committee
- San Diego International Airport **SAN**
 - Airport Noise Abatement Committee
 - Quarterly Noise Reports
 - Flight Procedure Evaluation (Figure 1)
- Santa Ana **SNA**
 - Noise Roundtable
 - Monthly Noise Reports
 - A220-100 E Class Qualification
- Fly Quiet Programs



SOURCE: Esri, HERE, DeLorme, USGS, Intermap, INCREMENT P, NRCan, Esri Japan, METI, Esri China (Hong Kong), Esri Korea, Esri (Thailand), MapmyIndia, NGCC, OpenStreetMap Contributors, and the GIS User Community, August 2018 (basemap); San Diego County Regional Airport Authority ANOMS data, 2018 (FAA noise dots); ESRI Data, 2010 (Airports); National Flight Data Center (NFDC), October 2018 (waypoint); Ricondo & Associates, Inc., October 2018 (alternatives).


Figure 1: SAN ANAC Recommendation to relocate Noise Dot #4 and #5

Flight Operations

- Noise Abatement Departure Procedures
- RNAV
 - Continuous Descent
- Fort Myers RSW
 - Increase use of visual
 - Provide comfort and familiarity with ground track for Local Controllers
 - Next Phase: Full RNAV (GPS) approach
- Continuous Pilot Education

KRSW/RSW

19 APR 19

20-7

FT MYERS, FLA
SOUTHWEST FLORIDA INTL

EFSR

GATE INFORMATION

Communications

Station Operations:131.85Delta Operations

Gates: C2, C4, C6-C9

SPECIAL NOTES

CAUTION

Light poles on east edge of east ramp 90' from centerline.

Airport Operations Without An Operating Control Tower

- Tower Hours: 0600-2400 LT
- Refer to AM, Ops Specs, No Operating Control Tower.
- ASOS Available via VHF and/or ASOS (239) 561-0966.
- Closeout/Activate Flight Plan with ATC or FSS: 1-888-766-8267.

DEPARTURES

Pushback Clearance: Required for Gates C8 and C9 only.

ARRIVALS

CAUTION

Airports with similar runway alignment. Do not inadvertently mistake Page Field (KFMY) located 7 NM northwest of KRSW.

Noise Abatement Procedures Rwy 6

- When weather is better than 4000'/5 SM consider requesting the RNAV Visual.
 - Maintain 3000' until crossing the shoreline if on a visual approach southwest of the airport.

Figure 2: Noise Abatement Procedure Revision

Fleet Technology

- New Features Considered
 - Fuel Savings
 - Maintenance Expense/Reliability
 - Noise Level
- Incoming Fleets
 - A220
 - Stage 4 (Upgraded to Stage 5 in 2020)
 - PW1521GA
 - A330-900
 - Stage 5
 - Trent 7000-72
 - A350
 - Stage 5
 - Trent XWB-84



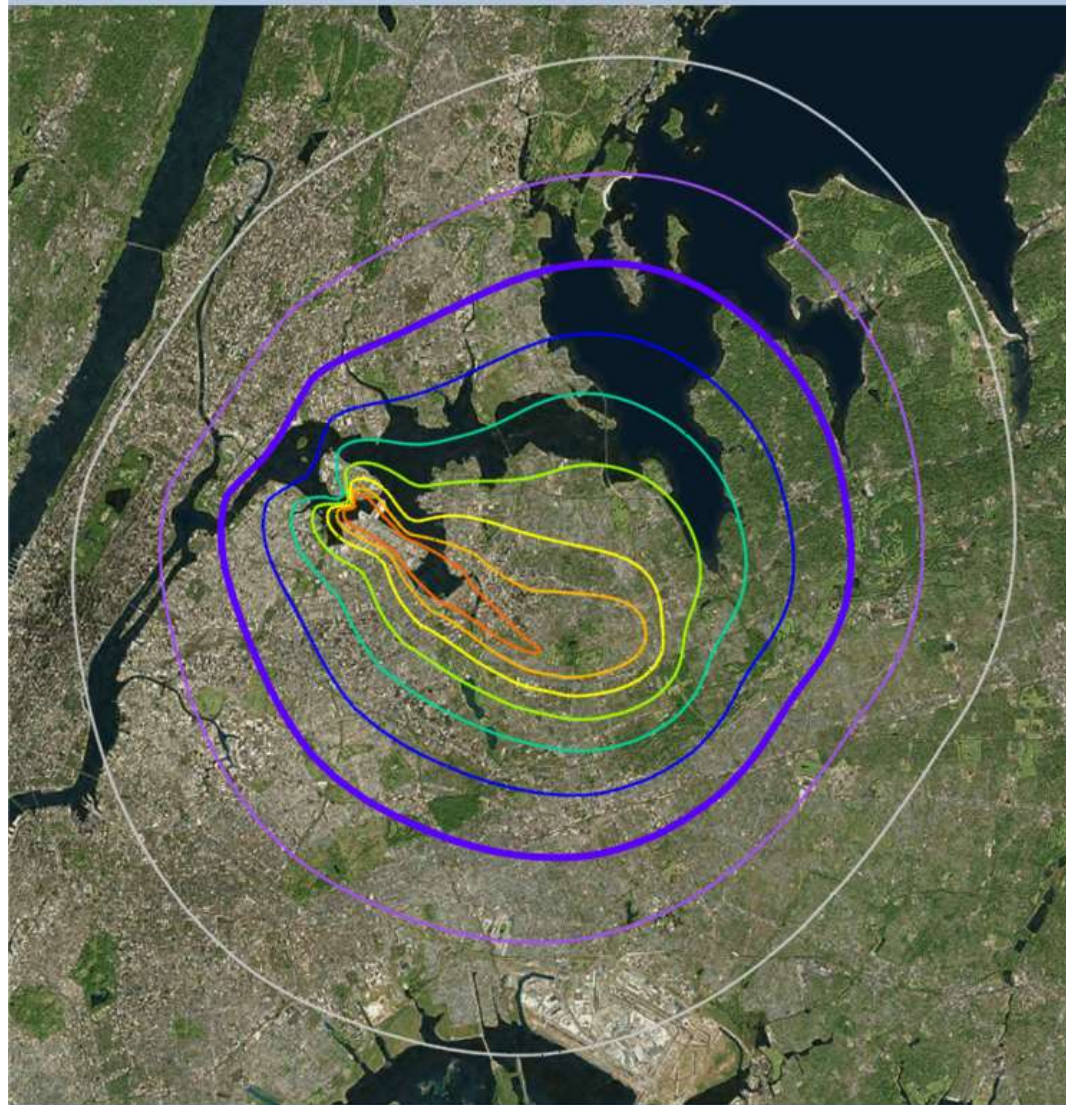
Figure 3: A220-100



Figure 4: A330-900

MD-88 LGA-ATL RWY 13 Departure

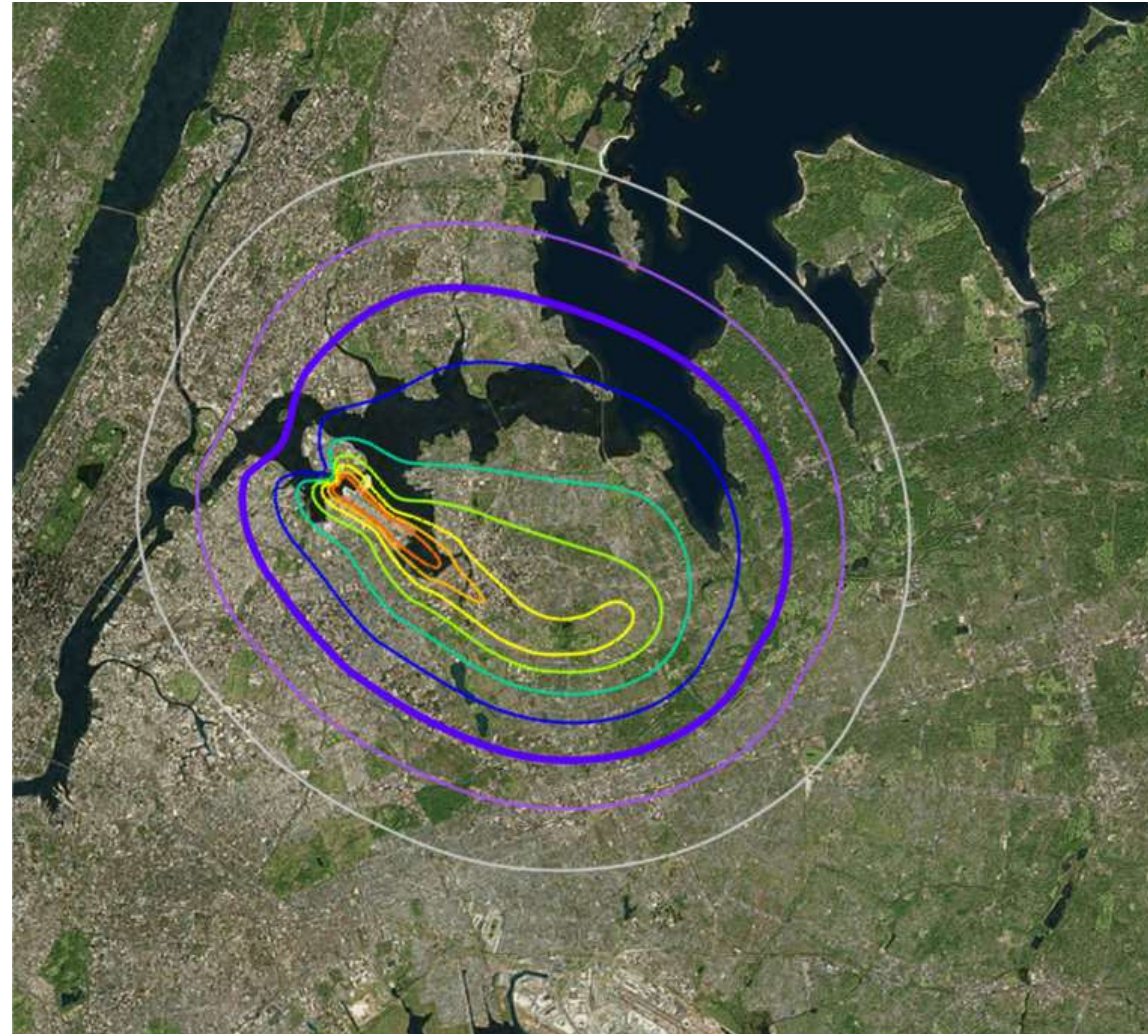
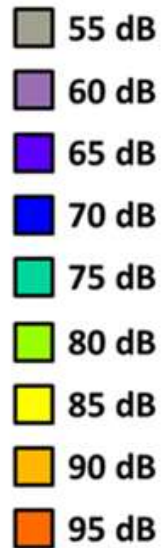
- MD-88
 - 149 seats
 - EIS: 13Feb87
 - SEL



- Sound Exposure Level Comparison
- Single flight departure from RWY 13
- Turn at end of runway to follow SID for West or Southwest tracks

A320 LGA-DEN RWY 13 Departure

- A320
 - 160 seats
 - EIS: 1Aug90
 - SEL



- Sound Exposure Level Comparison
- Single flight departure from RWY 13
- Turn at end of runway to follow SID for West or Southwest tracks

A220 LGA-DEN RWY 13 Departure

- A220-100
 - 109 seats
 - EIS: 20Oct18
 - SEL
 - 75 dB
 - 80 dB
 - 85 dB
 - 90 dB



- Sound Exposure Level Comparison
- Single flight departure from RWY 13
- Turn at end of runway to follow SID for West or Southwest tracks

Population Impact

- LGA Comparison

Contour (dB)	MD88	A320	ERJ-175	717	757	A220
65	4,042,934	2,345,385	1,745,121	1,631,556	1,155,393	1,113,044
75	1,649,970	692,820	500,040	352,080	269,237	109,610
85	358,560	73,980	47,250	5,670	4,897	4,396
95	1,035	0	0	0	0	0

Thank You!



AIR LINES, INC.