



National Aeronautics and
Space Administration

NASA Mission Support Directorate (MSD) Key Issues and Priorities

David Mitchell
NASA/MSD Associate Administrator



MISSION SUPPORT DIRECTORATE

Enables Mission Success

MSD's Purpose, Mission, and Vision

OUR PURPOSE

We promote NASA's mission success by delivering reliable, adaptable, integrated, scalable, and streamlined technical and professional support capabilities to all of NASA.

OUR MISSION

We ensure NASA leadership in aerospace, science, and exploration by pioneering modern and affordable service experiences and partnerships through exceptional people, places, and technology.

OUR VISION

To be the unparalleled source of seamless and innovative support capabilities in aerospace, science, and exploration.

NASA Mission Support



- Mission Support Directorate (MSD) – Provides funding, alignment, and integration for NASA Mission Support
- Mission Services and Capabilities – Mission Support Enterprise Organizations (MSEOs) provide essential services and expertise to the Agency
- Engineering, Safety and Operations – Includes Technical Authorities (TAs) that provide the agency with expertise and advice on technical and programmatic readiness of programs and projects and Center Engineering, Safety and Operations that provide analytical support, research and development, and institutional capabilities

Mission Support is Mission

To enable NASA's success, MSD prioritizes efficiency and optimization in three areas



INFRASTRUCTURE

WORKFORCE

MODERNIZED
TECHNOLOGY

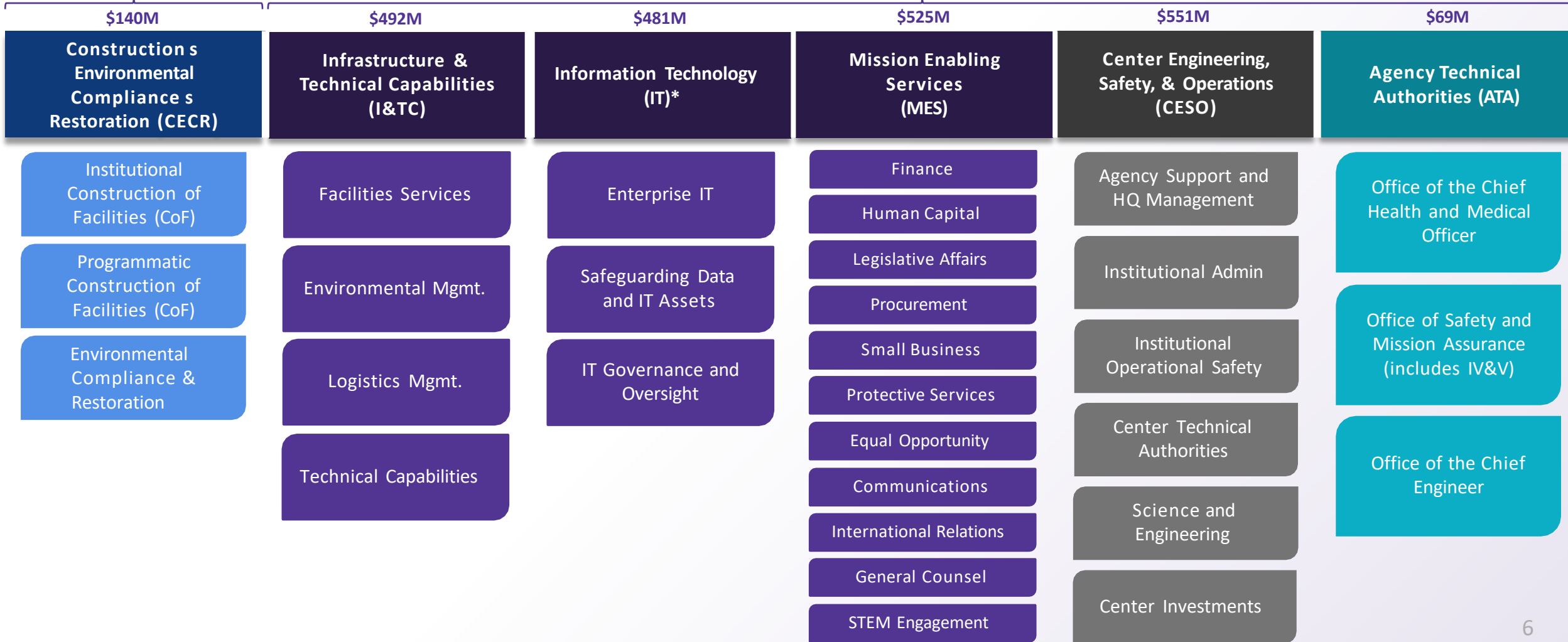


FY26 Budget Elements

TOTAL BUDGET
\$2,258M

CECR \$140M

Safety, Security, and Mission Services
\$2,118M



*Does not include Mission IT

Mission Services & Capabilities \$1,498M

Engineering, Safety, & Ops \$620M

Mission Support Major Planned Achievements for FY26

- Construction and Environmental Compliance and Restoration includes funding of two discrete projects at KSC and JSC in support of M2M and demolition of unneeded infrastructure
- Maintain NASA critical infrastructure and technical capabilities across all NASA centers
- The Information Technology Program will modernize IT capabilities and provide strategic cybersecurity and Artificial Intelligence risk management
- Mission Enabling Services Program provides an enterprise approach to managing NASA's business operations and mission support activities
- NASA Centers' Engineering, Safety, and Operations provides for center operations, technical capabilities, and skilled workforce to meet mission-critical requirements
- Agency Technical Authorities ensure safety and mission success by providing independent technical oversight for safety, health, quality, and engineering

Top Mission Support Challenges

- Aging Infrastructure
- Agency Cybersecurity Posture
- Workforce Reshaping
- Technology Modernization
- Environmental Compliance and Restoration



In Closing...

- Mission Support's FY26 President's Budget Request balances investments in services and capabilities that support NASA's evolving missions.
- Infrastructure construction and maintenance are essential to support prioritized NASA missions
- Mission support must continue to leverage technology to ensure essential services, technical capabilities, and reliable infrastructure are affordable and ready to meet mission needs



Q & A

THANK YOU