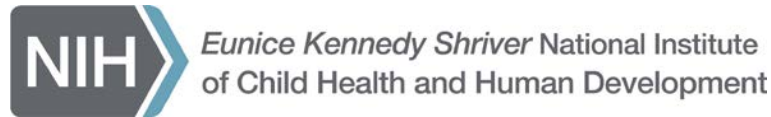


The Future of Education Research at IES

The National Academies of Sciences, Engineering, and Medicine

James A. Griffin, Ph.D.

Chief, Child Development and Behavior Branch, NICHD
June 29, 2021



Outline

- What are the primary goals of your agency's investments in research, and how is your agency organized to achieve those goals?
- In what ways are these investments designed to support Administration priorities around equity?
- How do you attend to diversity, equity and inclusion in your review processes?

National Institutes of Health



World's largest supporter of biomedical, behavioral, and social science research and training.

~\$42.9 Billion budget (FY2021)

27 Institutes and Centers

The *Eunice Kennedy Shriver* National Institute of Child Health and Human Development (NICHD)

Mission Statement

Lead research and training to understand human development, improve reproductive health, enhance the lives of children and adolescents, and optimize abilities for all.

“Healthy pregnancies. Healthy children. Healthy and optimal lives.”

Dr. Diana Bianchi, Director, NICHD



Child Development and Behavior Branch (CDBB)

- Early Learning & School Readiness (James Griffin, Chief)
- Cognitive Development, Behavioral Neuroscience, & Psychobiology (Amanda Price)
- Language, Bilingualism & Biliteracy (Open – Brett Miller Acting)
- Reading, Writing, & Related Learning Disabilities (Brett Miller)
- Math & Science Cognition, Reasoning & Related Learning Disorders (Kathy Mann Koepke)
- Behavioral Pediatrics & Health Promotion (Karen Lee)
- Social & Emotional Development/Child & Family Processes and Human-Animal Interaction (Layla Esposito)



Strategic Planning Process at NICHD

21st Century Cures Act – Legislative Requirements

In 2016 the 21st Century Cures Act, SEC. 2031. ‘National Institutes of Health (NIH) Strategic Plan’ outlined requirements for the NIH Strategic Plan.

Specifically, Section 402(m) of the PHS Act stipulated that Strategic plans developed and updated by the national research institutes and national centers of NIH...shall have a common template

NIH Template for IC Strategic Plans:

- Overview and Introduction
- Scientific Goals/Objectives/Priorities
- Serving as an Efficient and Effective Steward of Public Resources
 - Priority Setting
 - *Scientific Stewardship*
 - *Management & Accountability*
- Description of the Strategic Planning Process



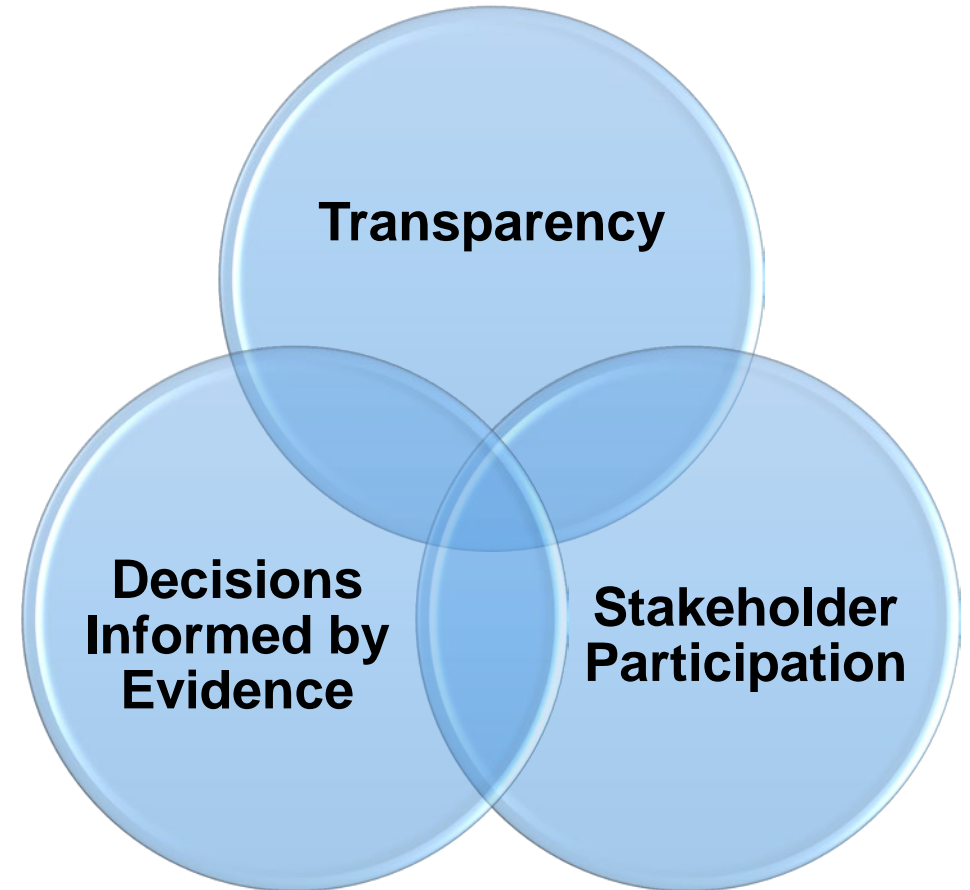
NICHD Strategic Plan 2020

Goals

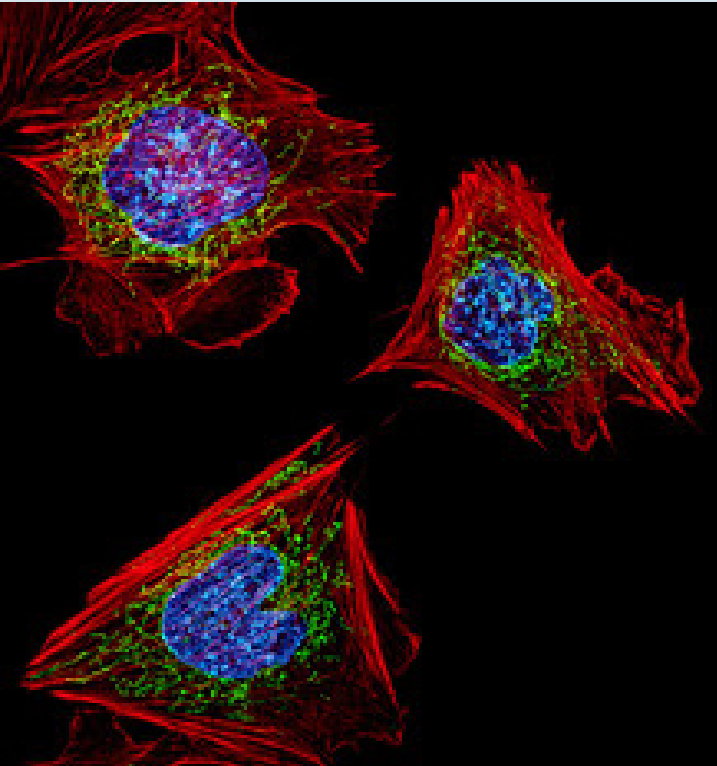
1. Identify where NICHD should lead (priorities)
2. Identify where NICHD should partner and collaborate
3. Inform future investments in research, training, and infrastructure



Core Principles



NICHD Strategic Plan 2020



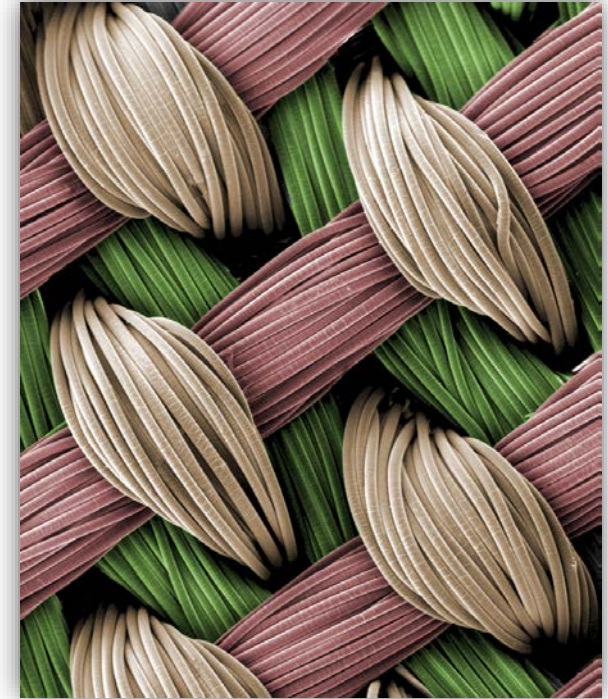
Final Research Themes

1. Understanding the Molecular, Cellular, and Structural Basis of Development
2. Promoting Gynecologic, Andrologic, and Reproductive Health
3. Setting the Foundation for Healthy Pregnancies and Lifelong Wellness
4. Improving Child and Adolescent Health and the Transition to Adulthood
5. Advancing Safe and Effective Therapeutics and Devices for Pregnant and Lactating Women, Children, and People with Disabilities

[NICHD Strategic Plan](#)

Cross-Cutting Themes

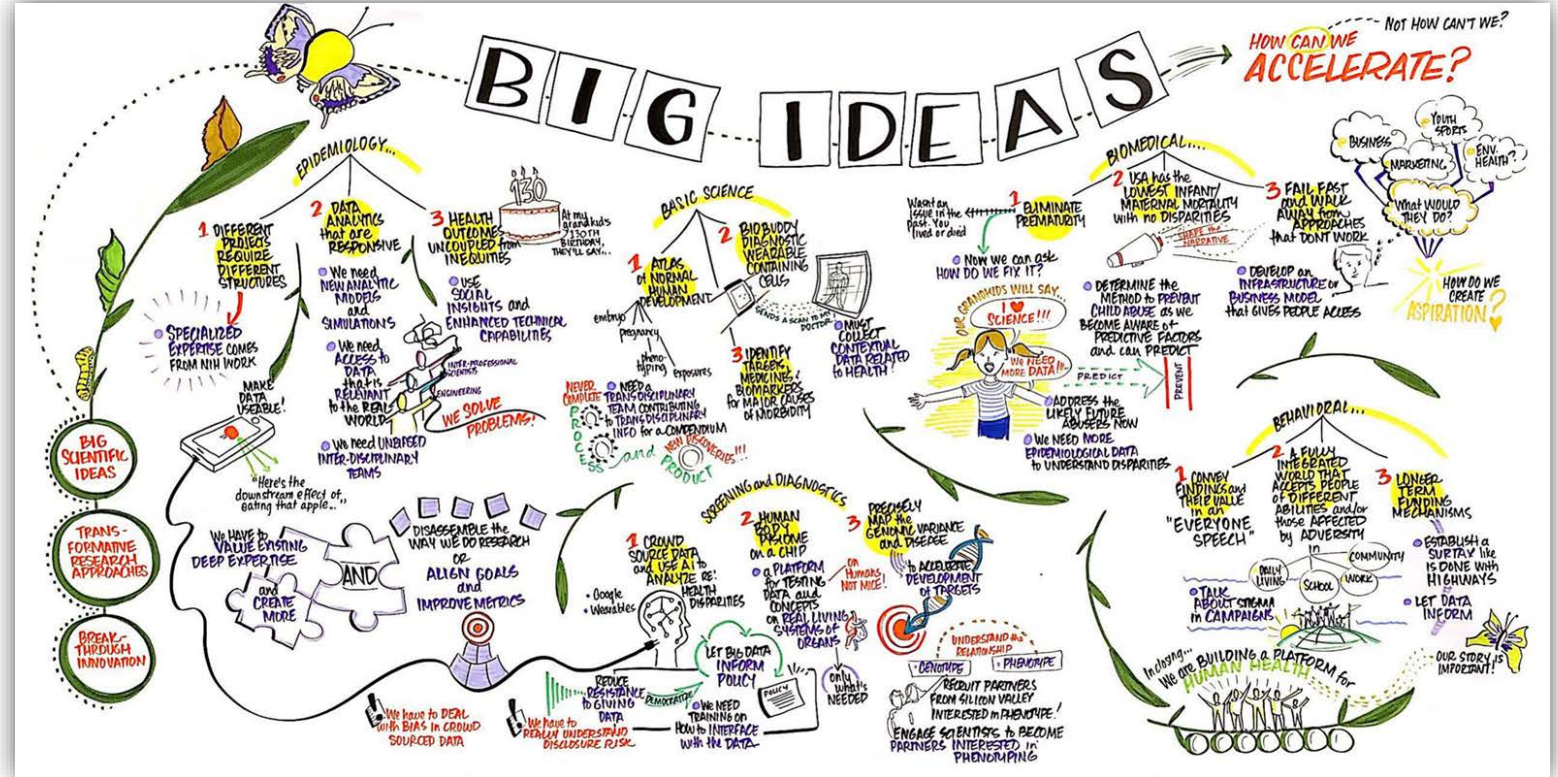
1. **Global Health:** Improve pre-pregnancy health globally using new interventions to benefit pregnancy outcomes, and prevent prematurity, malnutrition, childhood stunting, disease, and developmental delays.
2. **Health Disparities:** Understand how social, economic, structural, and regional factors are vital to the advancement of preventive, diagnostic, and intervention efforts.
3. **Prevention:** Prevent adverse health outcomes, improve early detection, and understand the optimal timing of prevention efforts.
4. **Nutrition:** Improve our understanding of the lifetime impact of nutrition on reproductive health, fertility, pregnancy, and fetal, child, and adolescent growth and development.
5. **Infectious Disease:** Improve the basic understanding of how infectious pathogens affect pregnant women and young children, address the impact of infections on reproductive and overall health in children and adolescents, and advance safe and effective treatments for pregnant and lactating women, children, and people with disabilities.



Credit: Guilak Lab, Washington University

NICHD Strategic Plan 2020

Aspirational Goals



To encourage scientists to aim beyond what is considered possible and strive to further advance research we have identified Aspirational Goals.

Ten Aspirational Goals

Goal 7: Explore Risks of Technology and Media Exposure in the Developing Brain

- Discover how technology exposure and media usage affect developmental trajectories, health outcomes, and parent/child interactions in early childhood.



CDBB Research Priorities

- **Effects of Technology and Digital Media Use on Child and Adolescent Development**
- **Neurodevelopment, Neuroplasticity, and Sensitive Periods**
- **Use of Neurocognitive Sensitive Periods and Risk/Protective Factors to Inform Targeted Prevention and Treatment Strategies**
- **Understanding Social Determinants of Health and Developmentally Informed Strategies to Mitigate Health Disparities**



Equity, Diversity and Inclusion at NIH

“Failure to acknowledge, recognize, and correct past cruelties will always lead to repeated uncivil behavior.”

— Treava S. Hopkins-Laboy,

Acting Director, NIH Office of Equity, Diversity, and Inclusion

Examples of Current NIH EDI Support Mechanisms

- Ruth L. Kirschstein National Research Service Award (NRSA) Individual Predoctoral Fellowship to Promote Diversity in Health-Related Research (Parent F31-Diversity) <https://grants.nih.gov/grants/guide/pa-files/PA-20-251.html>
- Ruth L. Kirschstein National Research Service Award (NRSA) Institutional Research Training Grant (Parent T32) <https://grants.nih.gov/grants/guide/pa-files/PA-20-142.html>
- Many IC-specific FOAs: <https://extramural-diversity.nih.gov/guidedata/data>
- Research Supplements to Promote Diversity in Health-Related Research (Admin Supp - Clinical Trial Not Allowed)- High school through ESI faculty <https://grants.nih.gov/grants/guide/pa-files/PA-21-071.html>

NIH UNITE (1)

UNITE is comprised of five committees with separate but coordinated objectives on tackling the problem of racism and discrimination in science, while developing methods to promote diversity and inclusion across the biomedical enterprise.

<https://www.nih.gov/ending-structural-racism/unite>

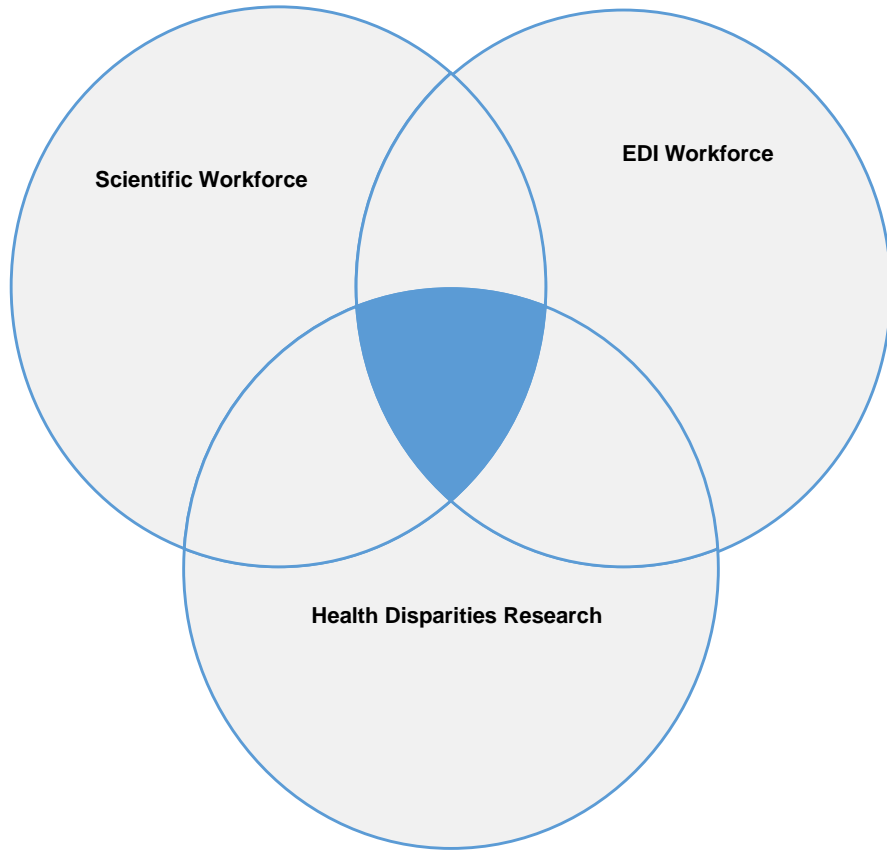
NIH UNITE (2)

- **U**nderstanding stakeholder experiences through listening and learning
- **N**ew research on health disparities, minority health, and health equity
- **I**mproving the NIH culture and structure for equity, inclusion and excellence
- **T**ransparency, communication, and accountability with our internal and external stakeholders
- **E**xtramural research ecosystem: changing policy, culture, and structure to promote workforce diversity



Equity, Diversity and Inclusion at NICHD

NICHD STRIVE: **S**Tراتيجيات to en**R**ich **I**nclusion and achie**V**e **E**quity (STRIVE) Initiative



Equity, Diversity, and Inclusion in the NICHD Workforce: To develop NICHD's Equity, Diversity and Inclusion (EDI) efforts for internal workforce

Enhancing the Diversity of the Extramural Workforce and Training Programs: To promote the diversity of the extramural workforce (trainees and investigators) who are underrepresented in NICHD-supported biomedical and bio-behavioral research

Addressing Health Disparities and Systemic Racism in Scientific Research: To examine opportunities to address SDOH, including structural racism, in the institute's health disparities research portfolios

NICHD STRIVE Goals



- Evaluate baseline EDI efforts, training and external workforce diversity, and health disparities research, with a special emphasis on the role of social determinants of health (SDOH) and other underlying factors
- Identify gaps and revise policies and practices to promote an inclusive and equitable workforce and promote equitable health
- Conduct a series of workshops and develop three **5-Year Action Plans** that include comprehensive, actionable policy recommendations and outcome metrics for institute leadership
- Monitor the progress and effectiveness of each Action Plan and provide course correction as needed.

Approved Action Plans will be integrated into strategic plan and dedicated resources are being planned to help with implementation.

<https://www.nichd.nih.gov/about/org/strive>

Watching PP presentations after lunch...



Contact info

James Griffin

James.Griffin@nih.gov



Questions?