



# The National Survey of Children's Health: Tracking Children's Health and Healthcare Needs

**NASEM Committee on Pediatric Subspecialty Access and Workforce Issues**

*July 18, 2022*

**Reem Ghandour, DrPH, MPA**

**Office of Epidemiology and Research**

**Maternal and Child Health Bureau (MCHB)**

**Vision: Healthy Communities, Healthy People**



# National Survey of Children's Health

## AGENDA

1. Overview of the National Survey of Children's Health (NSCH)
2. Selected Indicators of Child Health
3. Selected Measures of Access to Health Care Professionals
4. Accessing and Using the NSCH Data

# NSCH Overview:

## Design, Content, and Uses

# National Survey of Children's Health

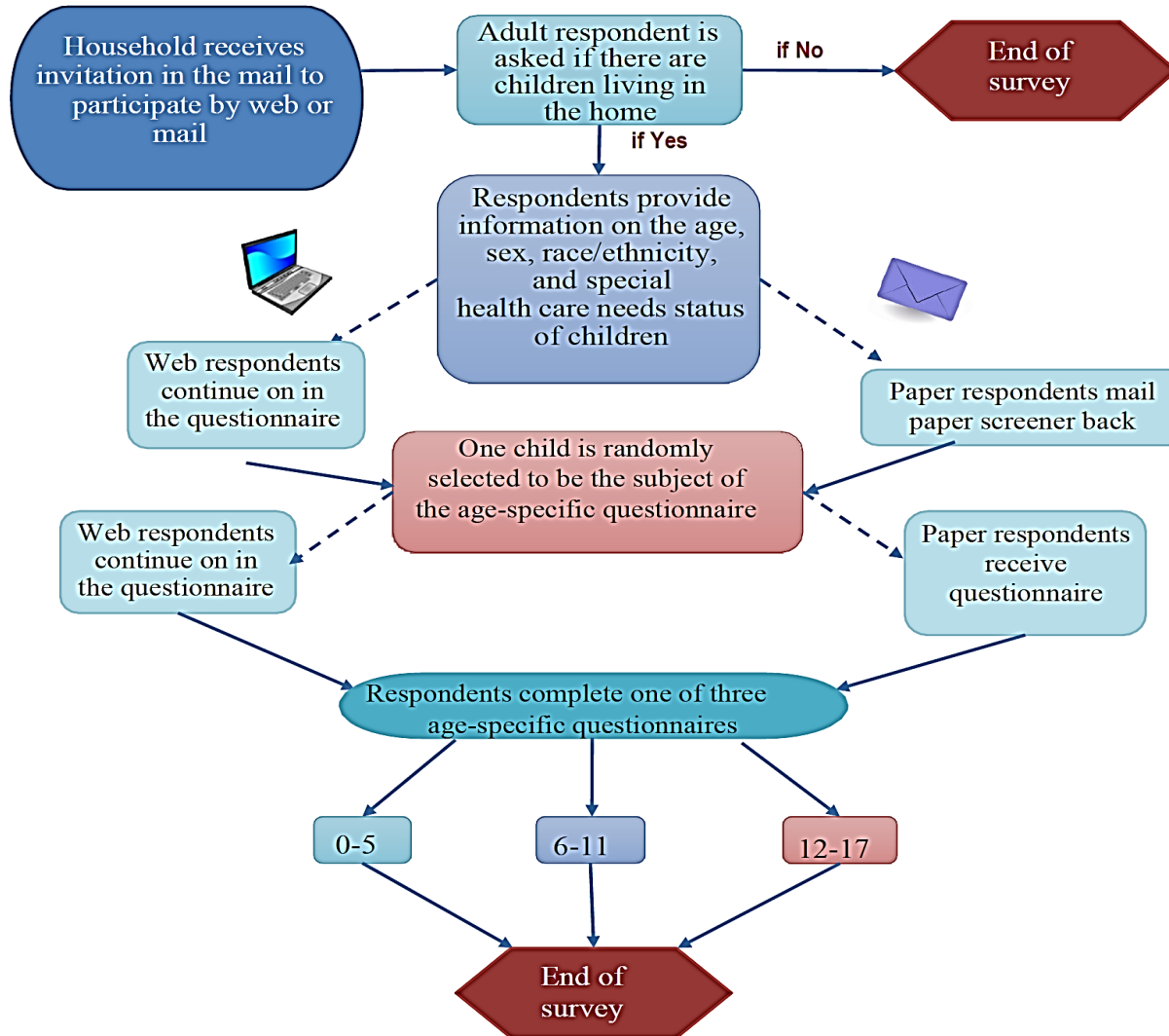
## Overview

- Sponsored by the **Health Resources and Services Administration's Maternal and Child Health Bureau**; conducted by the U.S. Census Bureau. Co-sponsorship by CDC and USDA.
- **Annual**, cross-sectional, address-based survey that collects information via the web and paper/pencil questionnaires.
- Designed to collect information on the health and well-being of **children ages 0-17**, and related health care, family, and community-level factors that can influence health.
- Provides both **national** and **state-level** estimates for all non-institutionalized children in the U.S.
- Data are released annually on **Child Health Day** (first week in October) for the previous year.



# National Survey of Children's Health

## Design



- **Multi-mode design**

- 70% of households invited them to participate via questionnaire
- 30% receive paper screener

- **Two-stage questionnaire**

- Household demographic and health care information
- Detailed age-specific questionnaire randomly selected

- **Respondent Eligibility**

- **Web:** Selected via random digit dialing → age-specific questionnaire randomly selected
- **Paper:** Respondents selected via 2000 Census → randomly selected child → age-specific questionnaire sent back to respondent for completion.

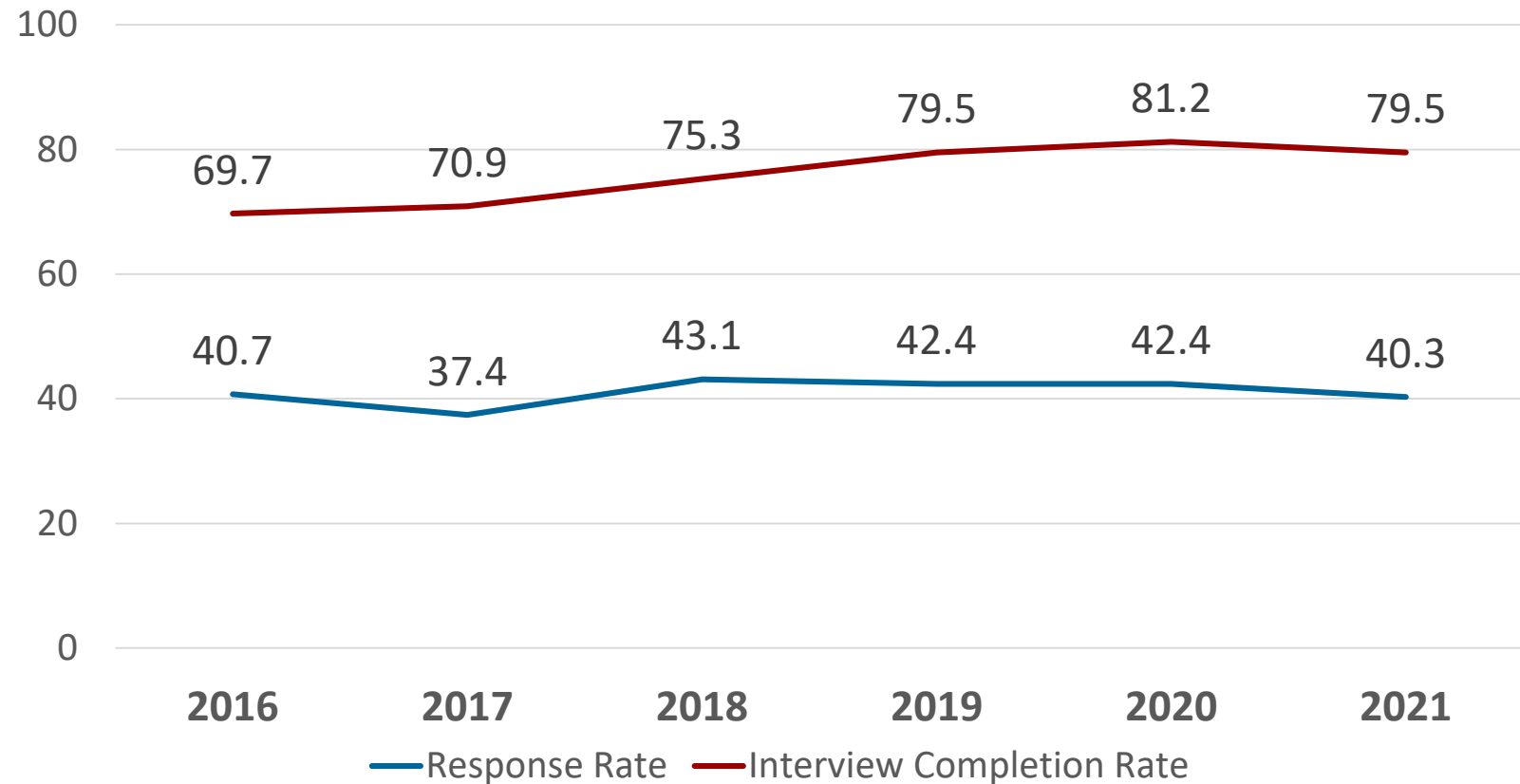
# National Survey of Children's Health

## Sample Size and Response Rates: 2016-2021

### Completed Interviews Per Year

- **2016 = 50,212**
  - 638+ per State & DC
- **2017 = 21,599**
  - 343+ per State & DC
- **2018 = 30,530**
  - 520+ per State & DC
- **2019 = 29,433**
  - 482+ per State & DC
- **2020 = 42,777**
  - 644+ per State & DC
- **2021 ≈ 50,900**
  - 790+ per State & DC

### Annual Response and Completion Rates





# National Survey of Children's Health

## Performance & Outcome Measurement, Policies, and Programs

### 20 Title V MCH Services Block Grant

#### National Performance and Outcome Measures:

- |   |                                     |
|---|-------------------------------------|
| 1. NPM 6: Developmental Screening           | 11. NOM 13: School Readiness        |
| 2. NPM 8.1: Physical Activity (6-11 years)  | 12. NOM 14: Tooth Decay/Cavities    |
| 3. NPM 8.2: Physical Activity (12-17 years) | 13. NOM 17.1: CSHCN                 |
| 4. NPM 9: Bullying                          | 14. NOM 17.2: CSHCN Systems of Care |
| 5. NPM 10: Adolescent Well-Visit            | 15. NOM 17.3: Autism                |
| 6. NPM 11: Medical Home                     | 16. NOM 17.4: ADD/ADHD              |
| 7. NPM 12: Transition                       | 17. NOM 18: Mental Health Treatment |
| 8. NPM 13.2: Preventive Dental Visit        | 18. NOM 19: Overall Health Status   |
| 9. NPM 14.2: Smoking (household)            | 19. NOM 20: Obesity                 |
| 10. NPM 15: Adequate Insurance              | 20. NOM 25: Forgone Health Care     |

#### Federal policy and program development:

- ✓ 15 Healthy People 2010/2020/2030 Objectives;
- ✓ CDC investments in ADHD, ASD, and Developmental Conditions;
- ✓ MCHB investments in early childhood (Home Visiting and Healthy Start);
- ✓ Children with Special Health Care Needs.

# National Survey of Children's Health

## Broad Utility

### Harris and Yellen urge Congress to back affordable child care proposal. [NBC News.](#)

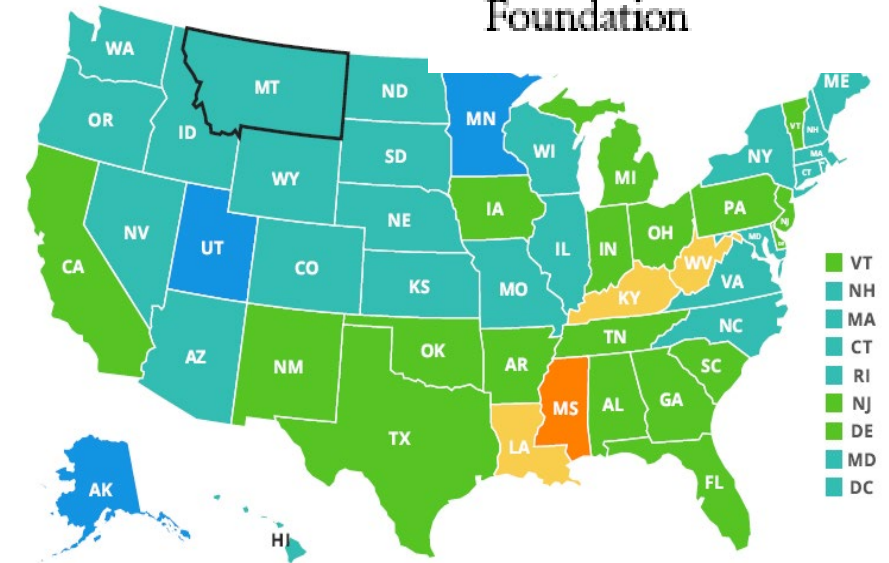
*Parents of 2 million children under the age of five had to quit their jobs, decline jobs, or change jobs because of child care problems, according to the 2018-2019 National Survey of Children's Health.*

### Starbucks announces new backup childcare benefits, by Danielle Wiener-Bronner, [CNN Business.](#) New York

Starbucks is sweetening the pot for employees with a new family care benefit. The company announced on Tuesday that it will provide workers with ten subsidized backup care days for children or adults. The new care policy "is the final piece of the puzzle," said Ron Crawford, vice president of benefits at Starbucks. Starbucks noted that 2 million working parents quit their jobs in 2016 because of child care, according to the National Survey of Children's Health.

### STATE of CHILDHOOD OBESITY

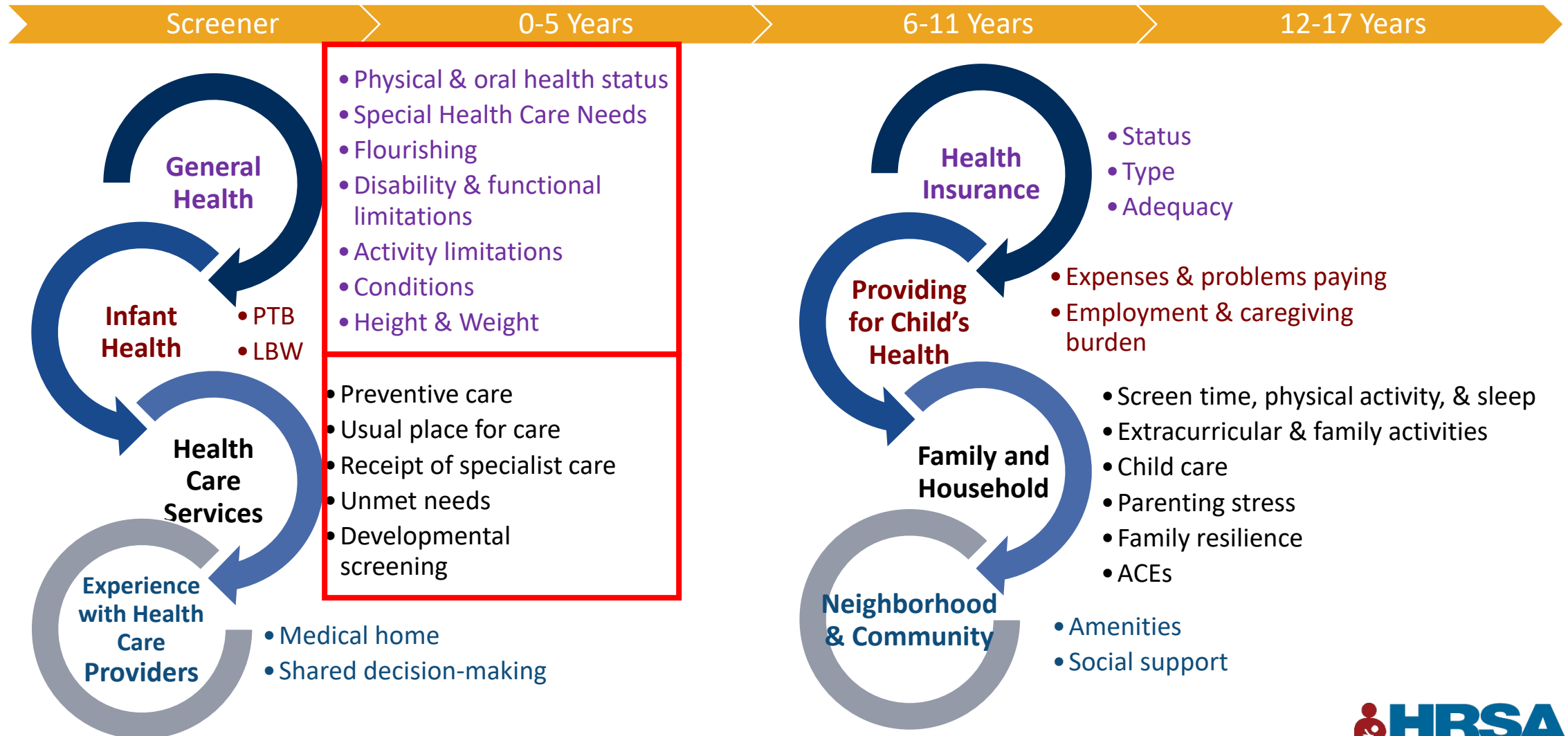
Helping All Children Grow Up Healthy





# NSCH Content

## Core Content Areas



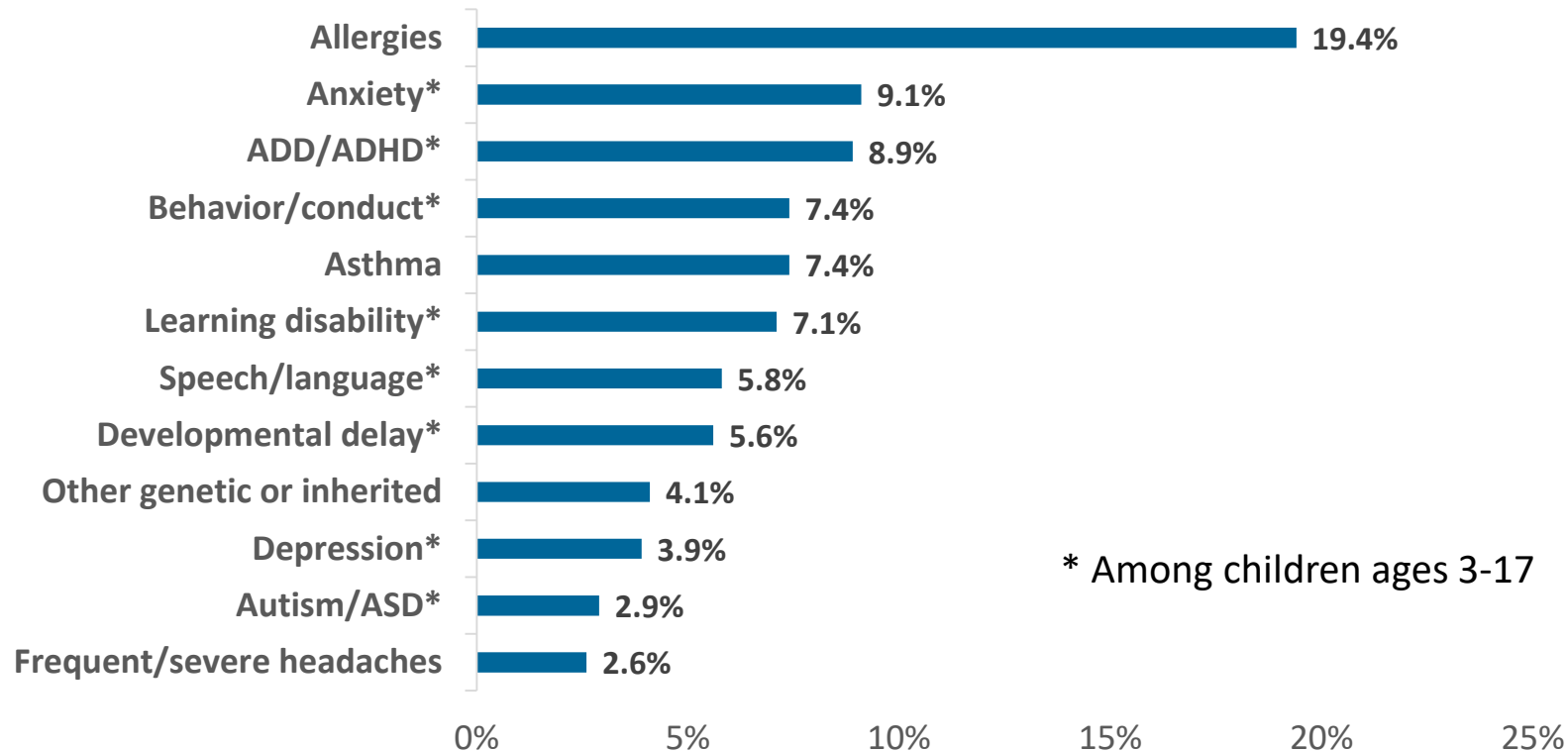
# **National Survey of Children's Health: 2019-2020 and Five-Year Trend Estimates**



# Key Estimates 2019-2020

## Health Conditions

### Prevalence of Current or Lifelong Health Conditions among Children Ages 0-17



- In 2019, the prevalence of the most common health conditions among children ages 0-17 was 19.4% for allergies, 9.1% for anxiety, and 8.9% for ADD/ADHD.
- Eight of the most common health conditions were developmental or behavioral.

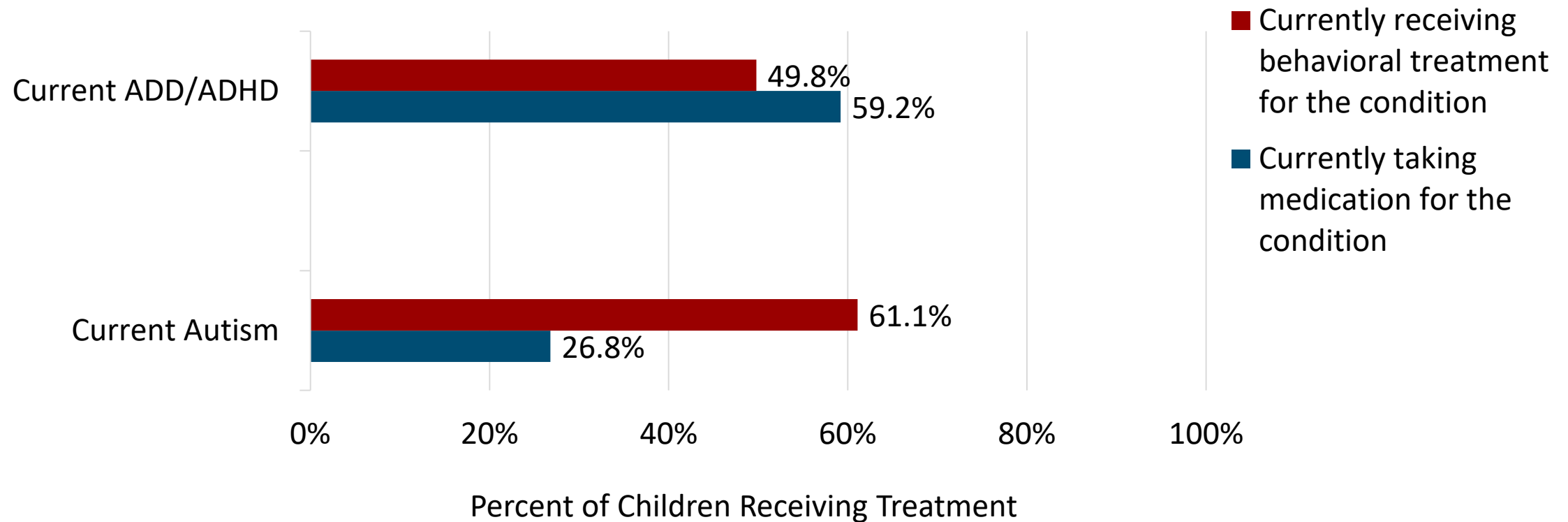


Note: Conditions with prevalence rates near or below 1% are not presented here.

# Key Estimates 2019-2020

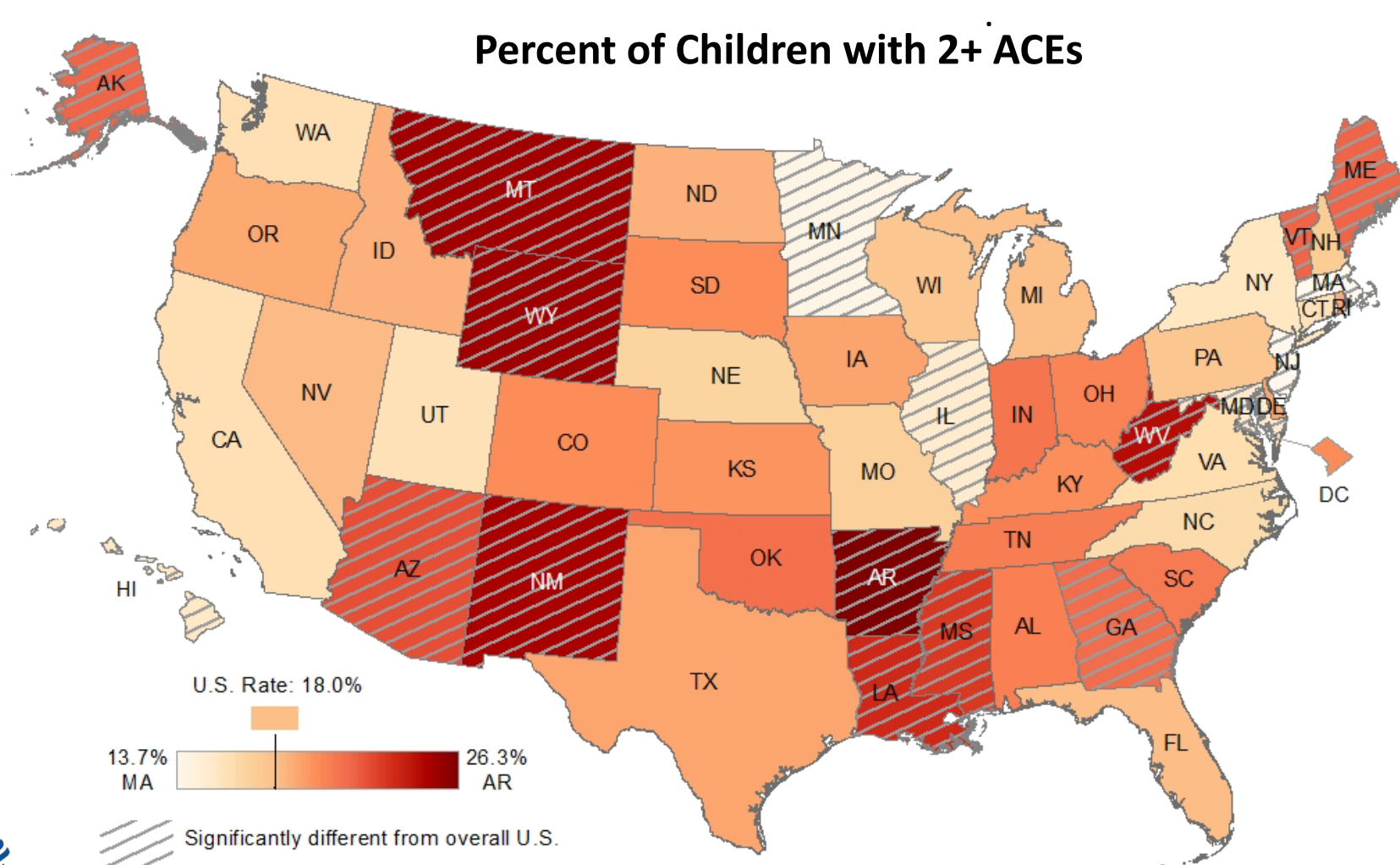
## Treatment for ADHD and Autism

Percent of children ages 3-17 years with ADD/ADHD or Autism who are receiving behavioral treatment or taking medication



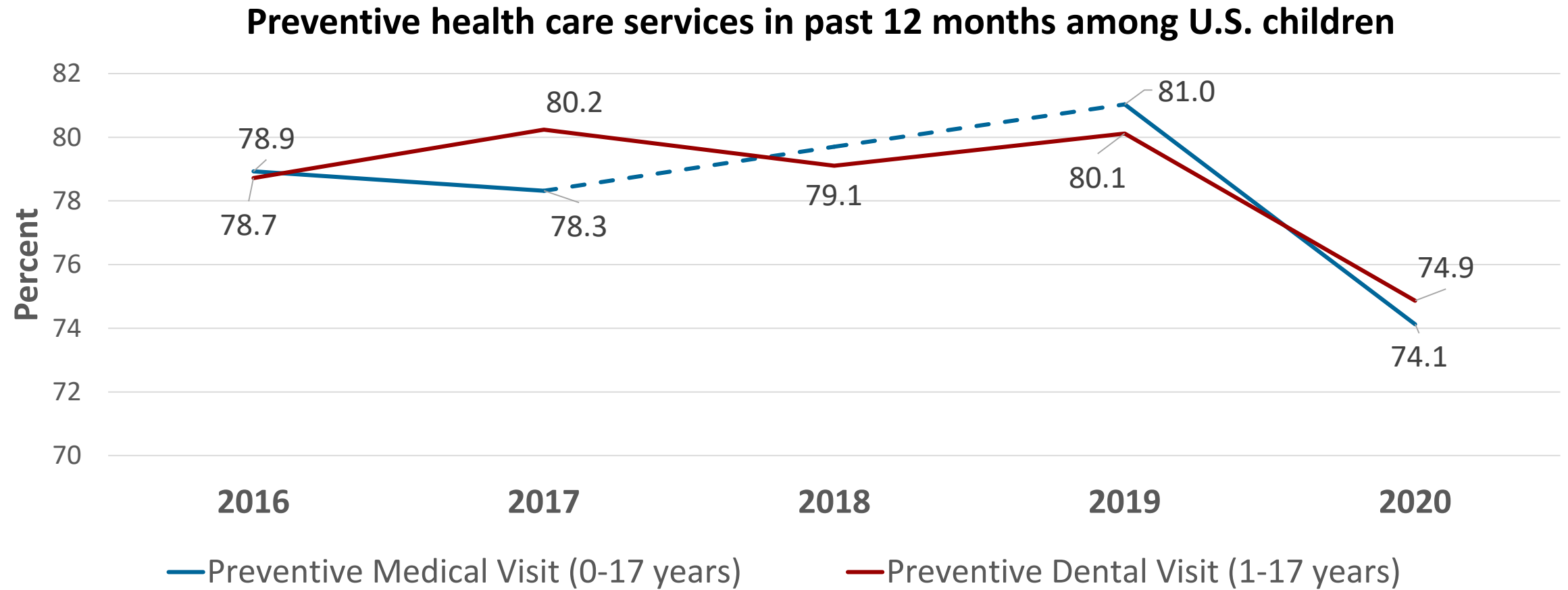
# Key Estimates 2019-2020

## Adverse Childhood Experiences



# Five-Year Trend Estimates

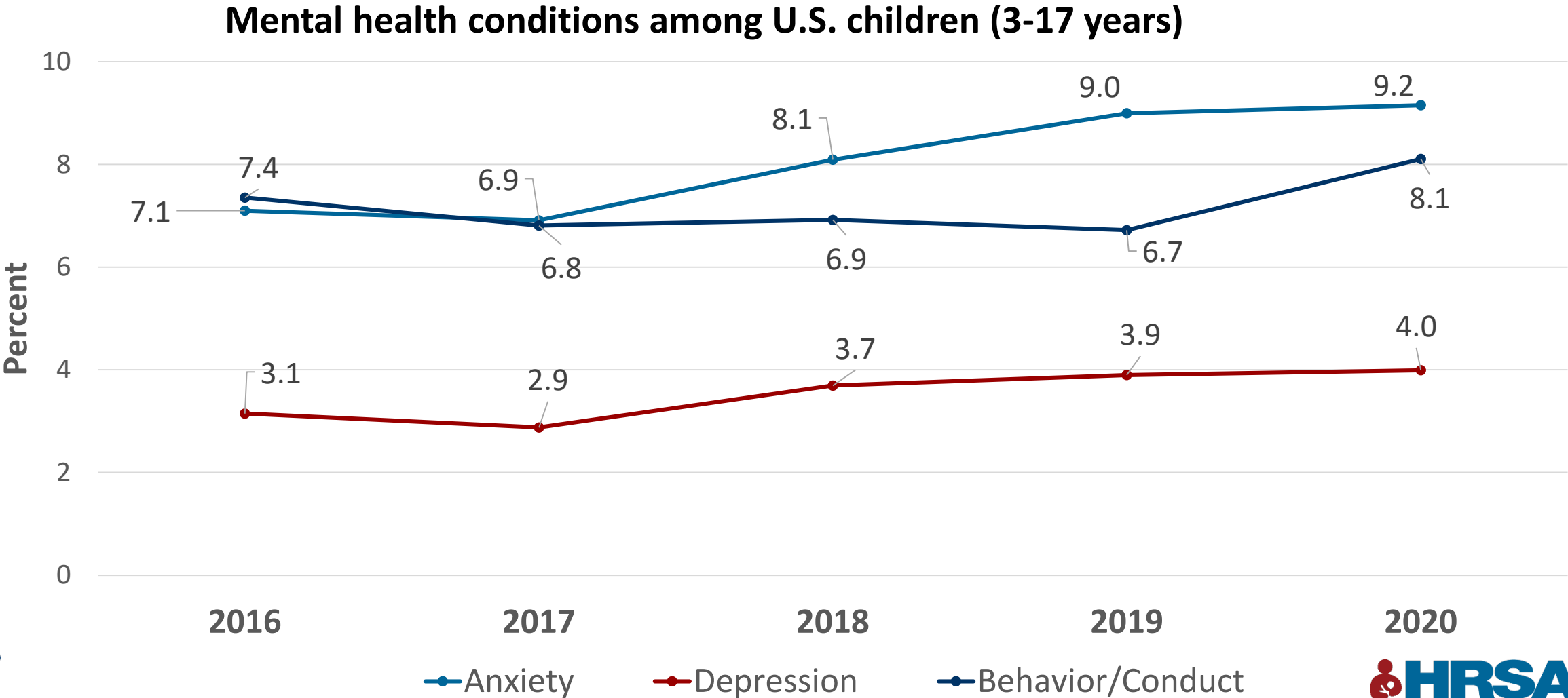
## Preventive Health Care





# Five-Year Trend Estimates

## Children's Mental Health



# **National Survey of Children's Health:**

## **Access to Health Care Professionals**



# Specialty Care and the NSCH...

## Strengths:

- Annual data collection with timely release;
- Large, national- and state-representative samples;
- Access to more granular data through RDCs (CBSA stats; MSA status; Census tract)
- Broad range of content related to children's health and well-being as well as family and community factors.

## Limitations:

- Population focus;
- Parent report;
- Limited real estate for all content areas.

# NSCH Content

## “Specialty” Care Measures

### Mental Health

- Receipt of mental health treatment/counseling, past 12m
- Difficulty getting MH treatment/counseling
- Medication for emotional, concentration, behavior problems, past 12m
- Insurance coverage for mental/behavioral health needs

### Specialist Visit

- Specialist visit, past 12m
- Difficulty getting specialty care

### Medical Home:

- Difficulty getting referrals, past 12m

### Forgone Care:

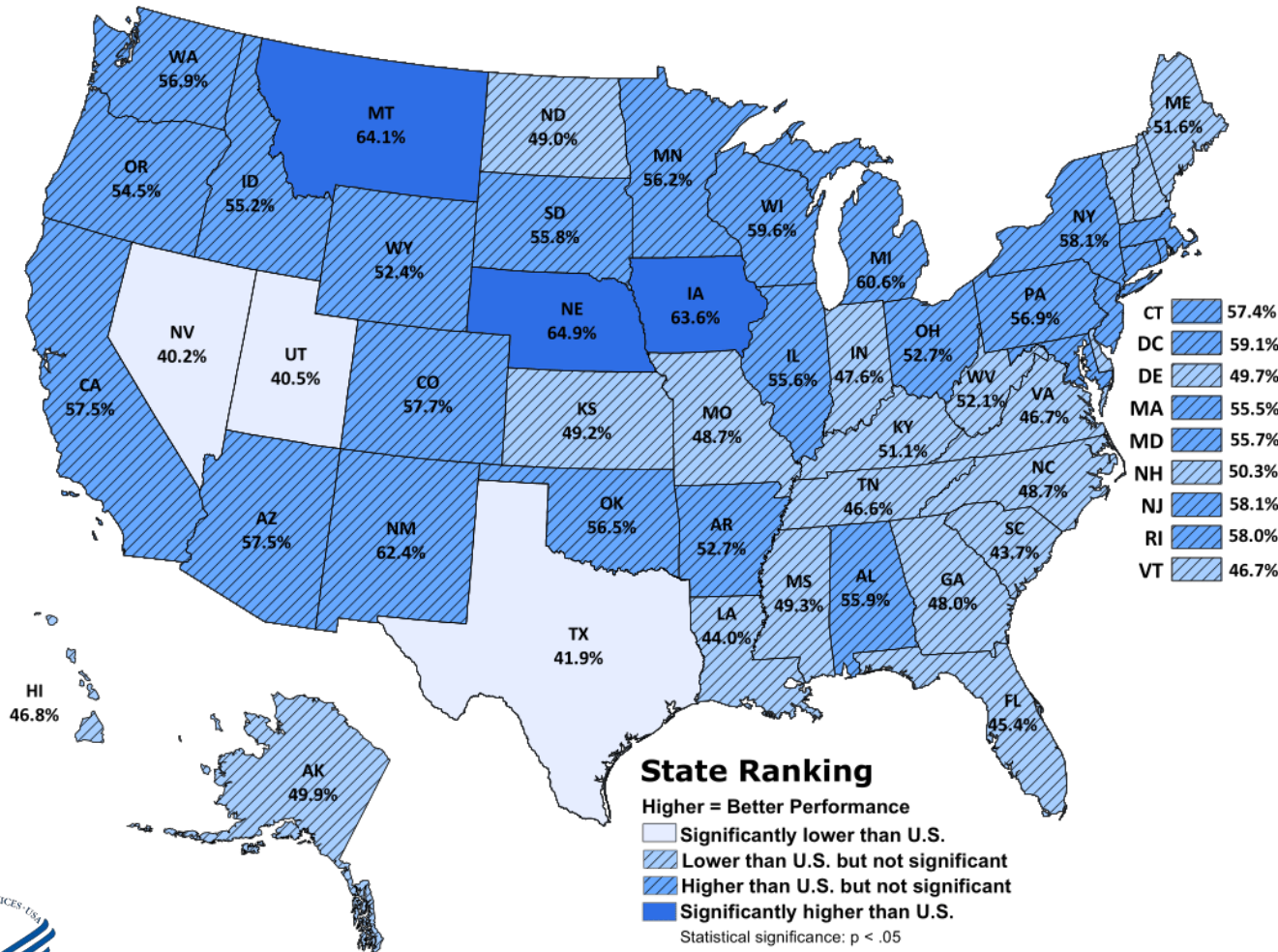
- Forgone care, past 12m
- Type of forgone care (esp. option f “others, specify”)
- Reasons for forgone care (esp. option b “services not available in your area”)



# NSCH Content

## 2019-2020 Results: Mental health treatment or counseling

“Title V National Outcome Measure #18”:  
Percent of children, ages 3 through 17,  
with a mental/behavioral condition who  
receive treatment or counseling



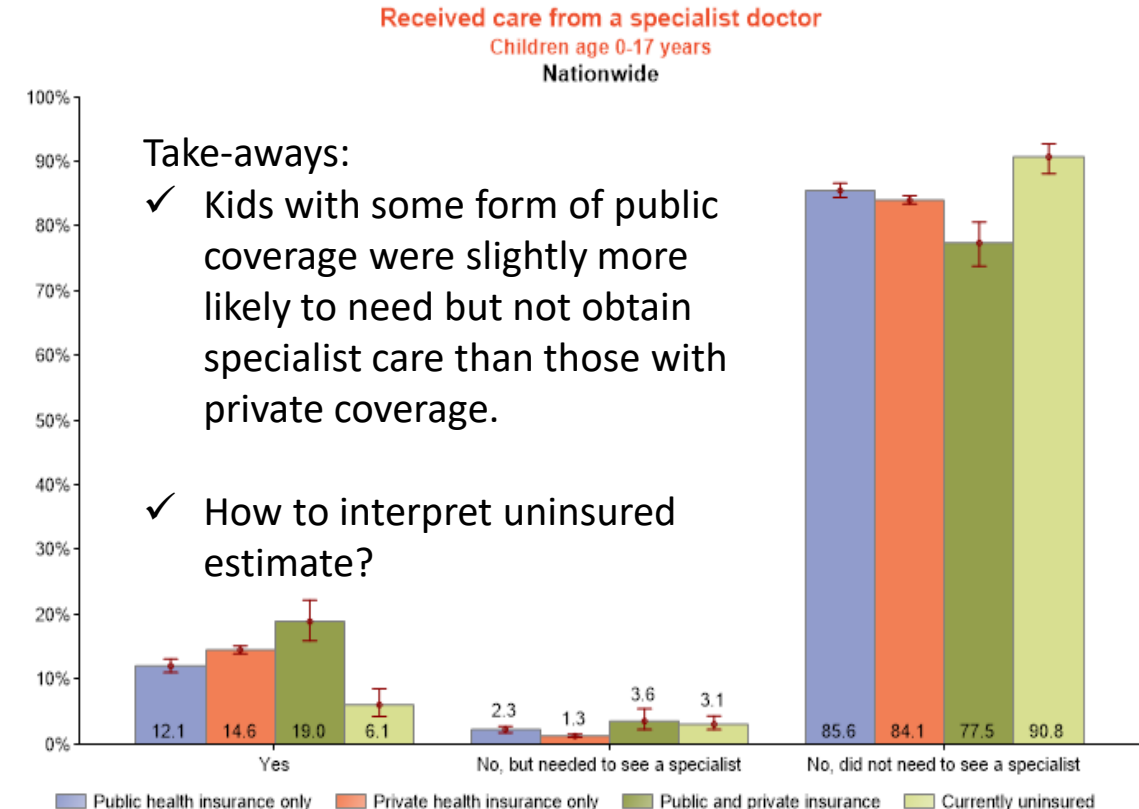
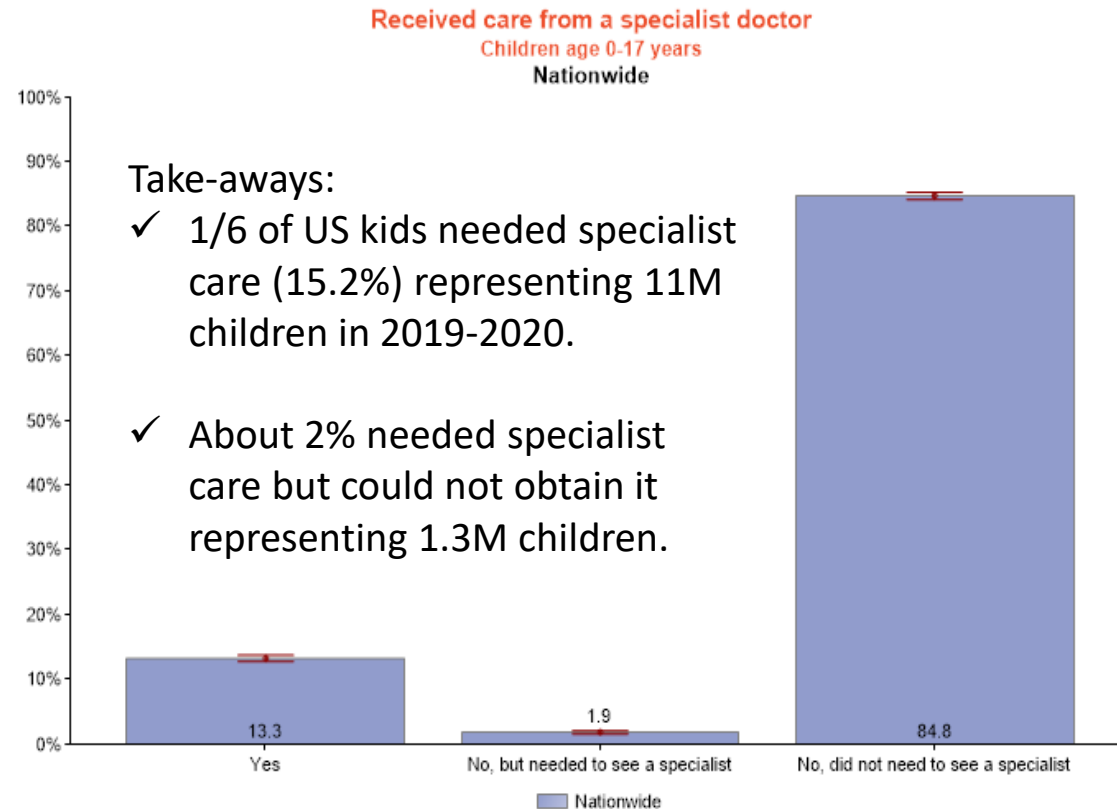
- **Nationwide:** 52.3% of children met indicator
- **Range Across States:** 40.2% to 64.9%

Source: 2019-2020 National Survey of Children's Health. Retrieved from:  
<https://www.childhealthdata.org/browse/rankings/maps?s=274>

# NSCH Content

## 2019-2020 Results: Specialist care received, past 12 months

During the past 12 months, did this child see a specialist other than a mental health professional?

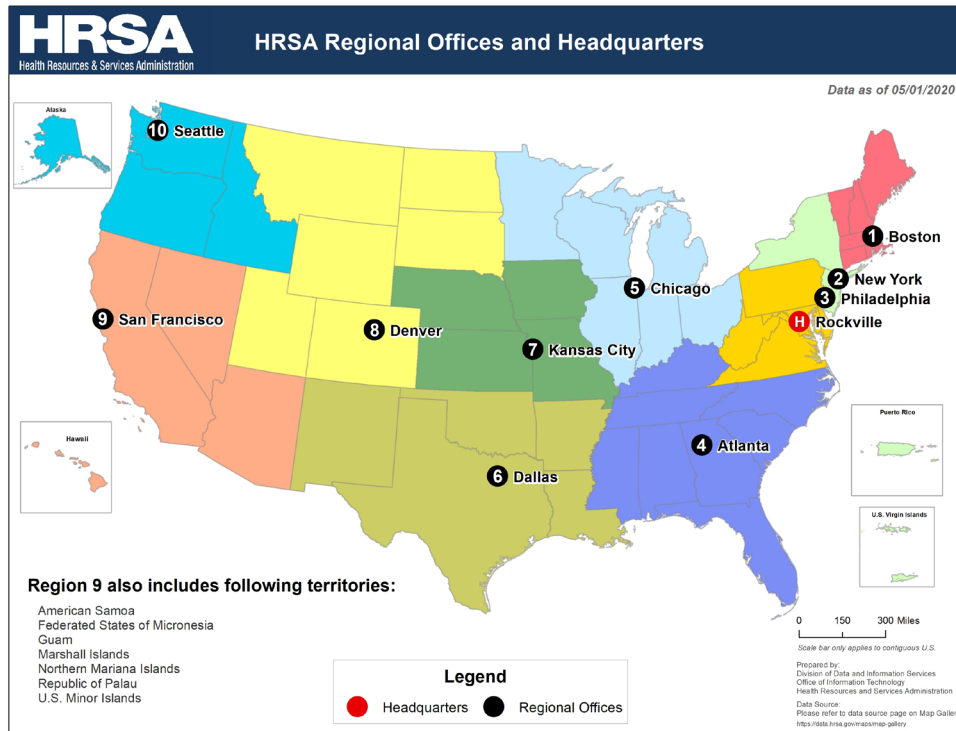




# NSCH Content

## 2019-2020 Results: Difficulty obtaining specialist care

How difficult was it to get the specialist care that this child needed?



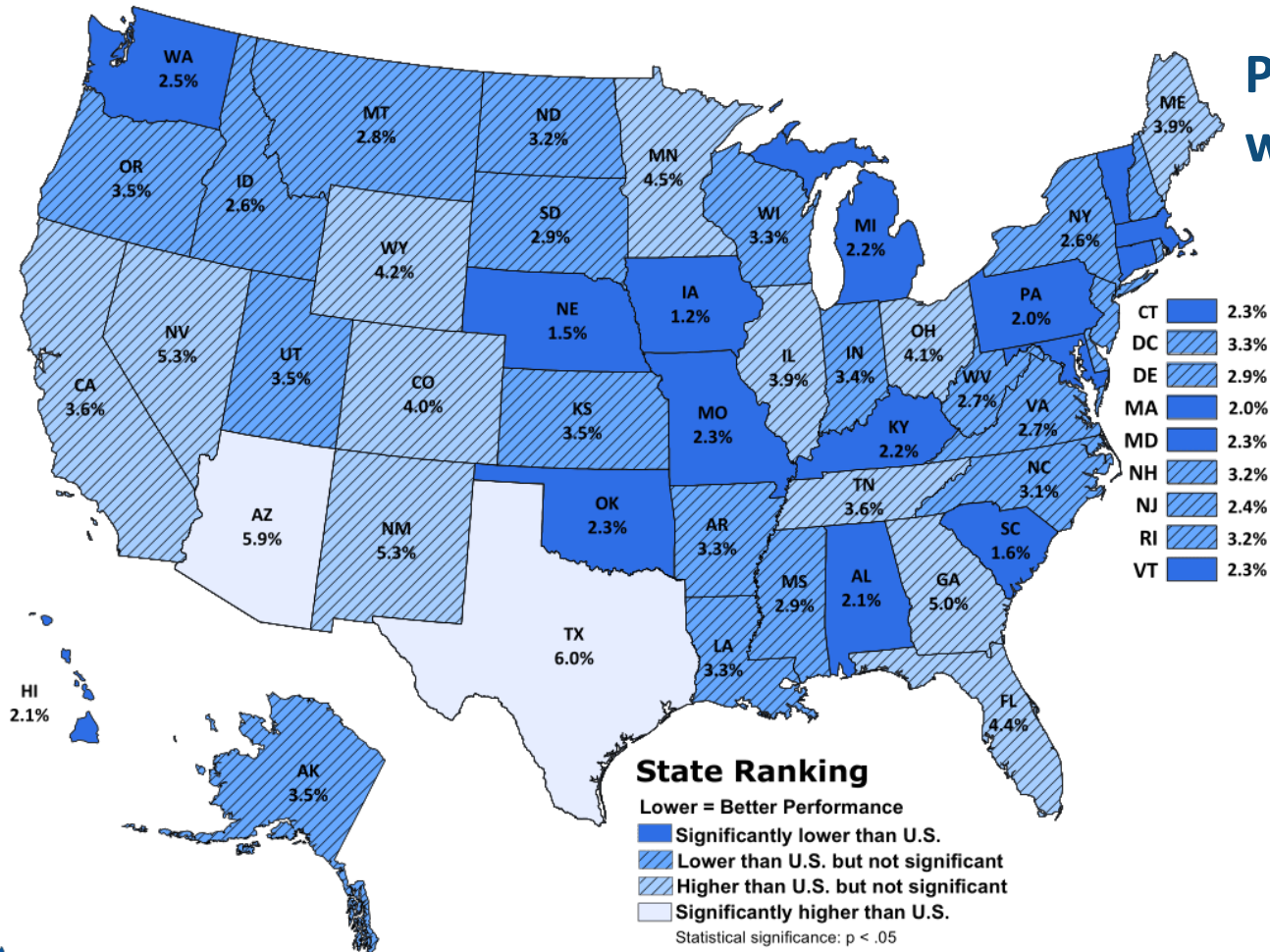
Region	Did not have difficulty %	Somewhat difficult %	Very difficult %	It was not possible to obtain care %
Nation	75.9	16.5	5.8	1.8
<a href="#">HRSA Region I</a>	78.1	15.0	5.3	1.7
<a href="#">HRSA Region II</a>	82.0	14.2	2.5	1.3
<a href="#">HRSA Region III</a>	75.9	16.7	6.2	1.2
<a href="#">HRSA Region IV</a>	76.5	16.3	5.2	2.0
<a href="#">HRSA Region V</a>	76.4	16.5	4.4	2.7
<a href="#">HRSA Region VI</a>	73.3	14.8	10.2	1.7
<a href="#">HRSA Region VII</a>	79.8	16.4	2.2	1.6
<a href="#">HRSA Region VIII</a>	74.1	21.9	3.0	1.0
<a href="#">HRSA Region IX</a>	72.5	17.7	8.2	1.6
<a href="#">HRSA Region X</a>	69.1	22.3	6.6	2.0

Please interpret with caution: estimate has a 95% confidence interval width exceeding 20 percentage points or 1.2 times the estimate and may not be reliable.

# NSCH Content

## 2019-2020 Results: Forgone care

**“Title V National Outcome Measure #25”:**  
Percent of children, ages 0 through 17, who  
were not able to obtain needed health care  
in the last year

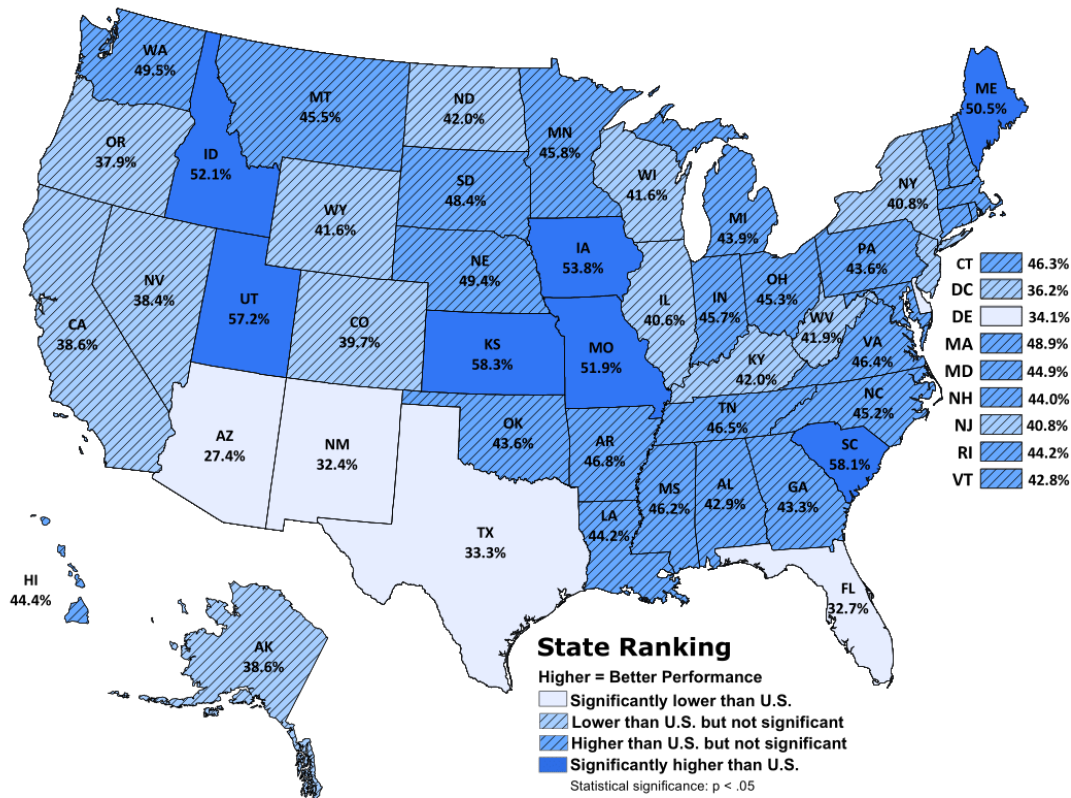


- **Nationwide:** 3.5% of children met indicator
- **Range Across States:** 1.2% to 6.0%

Source: 2019-2020 National Survey of Children's Health. Retrieved from:  
<https://www.childhealthdata.org/browse/rankings/maps?s=277>

# NSCH Content

## 2019-2020 Results: Medical Home for CYSHCN



“Title V National Outcome Measure #11”:  
Percent of children with special health care  
needs, ages 0 through 17, who have a  
medical home

- **Nationwide:** 42.2% of CYSHCN met indicator
- **Range Across States:** 27.4% to 58.3%
- **Nationwide:** 1/3 of CYSHCN needed referrals (36.7%) in past 12 months:
  - 79.3% no problems getting;
  - 15.6% somewhat difficult to get;
  - 4.1% very difficult to get;
  - 1.0% not possible to get referral\*

Source: 2019-2020 National Survey of Children's Health. Retrieved from:  
<https://www.childhealthdata.org/browse/rankings/maps?s=262>

# Using the NSCH: Data Access & Availability

# National Survey of Children's Health

## Accessing the Data

### MCHB Website

- <https://mchb.hrsa.gov/data/national-surveys>

### Census Bureau Website

- <https://www.census.gov/programs-surveys/nsch.html>

### Data Resource Center

- [www.childhealthdata.org](http://www.childhealthdata.org)

**Data Resource Center for Child & Adolescent Health**  
A project of the Child and Adolescent Health Measurement Initiative

**CAHMI** The Child & Adolescent Health Measurement Initiative

Learn About the NSCH | Explore the Data | Spread the Word | About Us

### National Survey of Children's Health Interactive Data Query

Video Tour of the Interactive Data Query

2018-2019 (two years combined)

Nationwide

**Note:** For the most reliable estimates, use the two-year combined data (e.g. 2018-2019).

[Continue](#)

Archived Data Query for NSCH and NS-CSHCN (prior to 2016)

### How to Use the DRC Website

The DRC advances the use of the National Survey of Children's Health, led by HRSA MCHB. Find more resources here:

- [About the DRC](#)
- [DRC Video Overview](#)
- [DRC Frequently Asked Questions](#)
- [Data available in the online data query](#)
- [Request NSCH datasets](#)
- [Download NSCH codebooks](#)

### For Title V

The DRC focuses on data and resources for Title V programs and partners. For over 75 years, the HRSA Maternal and Child Health Bureau (MCHB) has funded the Title V program to ensure the health of the nation's mothers, women, children and youth.

- [Link to Ways to Compare Data Across States on the DRC Website](#)
- [Link to HRSA MCHB Title V Information System](#)
- [Link to Get Help](#)

### Compare Data Across States



# 2021 NSCH

## Data Collection and Availability

---

- Fielded June 2021 – January 2022
- ≈50,900 completed child-level interviews
- Data will be available **October 3, 2022**
- Includes **new** items related to:
  - ✓ **COVID-19 pandemic**
  - ✓ **Early childhood nutrition**
  - ✓ **Outdoor play**





# 2022 NSCH

## Data Collection and Availability

---

- Data collection began July 8th
- Expecting ~60,000 completed child-level interviews
- Data will be available October 2, 2023
- Includes **new** items related to:
  - ✓ **Housing instability**
  - ✓ **Eating and weight related behaviors and concerns**
  - ✓ **FASD diagnosis and evaluations**
  - ✓ **Receipt of Supplemental Security Income (SSI) by child**



**Thank you!**  
**Questions?**

# Contact Information

---

**Dr. Reem Ghandour, Director**  
**National Survey of Children's Health**  
**Division of Epidemiology**  
**Office of Epidemiology and Research (OER)**  
**Maternal and Child Health Bureau (MCHB)**  
**Health Resources and Services Administration (HRSA)**  
**Email: [RGhandour@hrsa.gov](mailto:RGhandour@hrsa.gov)**  
**Web: [mchb.hrsa.gov](http://mchb.hrsa.gov)**



# Connect with HRSA

Learn more about our agency at:

[www.HRSA.gov](http://www.HRSA.gov)



[Sign up for the HRSA eNews](#)

FOLLOW US:

