

Providing Sustainable Mental Health Care in Ghana Workshop

La-Palm Royal Beach Hotel- Accra

April 28-29, 2015

E.T. Adjase-MD, MPH, DSc.honoris
causa

Ghana Lead -
The Kintampo Project.



- The Kintampo Project is a collaboration between many people throughout Ghana and the UK but predominantly a partnership between two health institutions- The Ministry of Health- Ghana via The Rural Health Training School, Now College of Health- Kintampo and the Southern Health NHS Foundation Trust, Hampshire -UK.

The Beginning

2006/2007



- A request for overseas partner through The Tropical Health Education Trust in London, UK was made in line with how health institutions in Ghana and the UK can work together more strategically
- The two leads, Dr. Mark Roberts and Dr. E.T. Adjase met in London to strategize to start the project

Project Vision

- Our vision is for Ghana to have excellent mental health services for all people in all settings –especially those in remote and under-served communities.
- Our objective by 2017 is to have one clinical Psychiatry Officer (CPO) and two to three Community Mental Health Officers (CMHOs) in each of Ghana's 216 districts

What we are doing

- The Kintampo Project is training a new generation of mental health workers unique to Ghana – The Clinical Psychiatry Officer and the Community Mental Health Officer.
- This workforce is shifting focus away from large psychiatric hospitals, decongesting the system and moving care into the community where it is most needed.
- The CPO is a degree level qualification with a high level of responsibility including diagnosis and the prescription of medication.

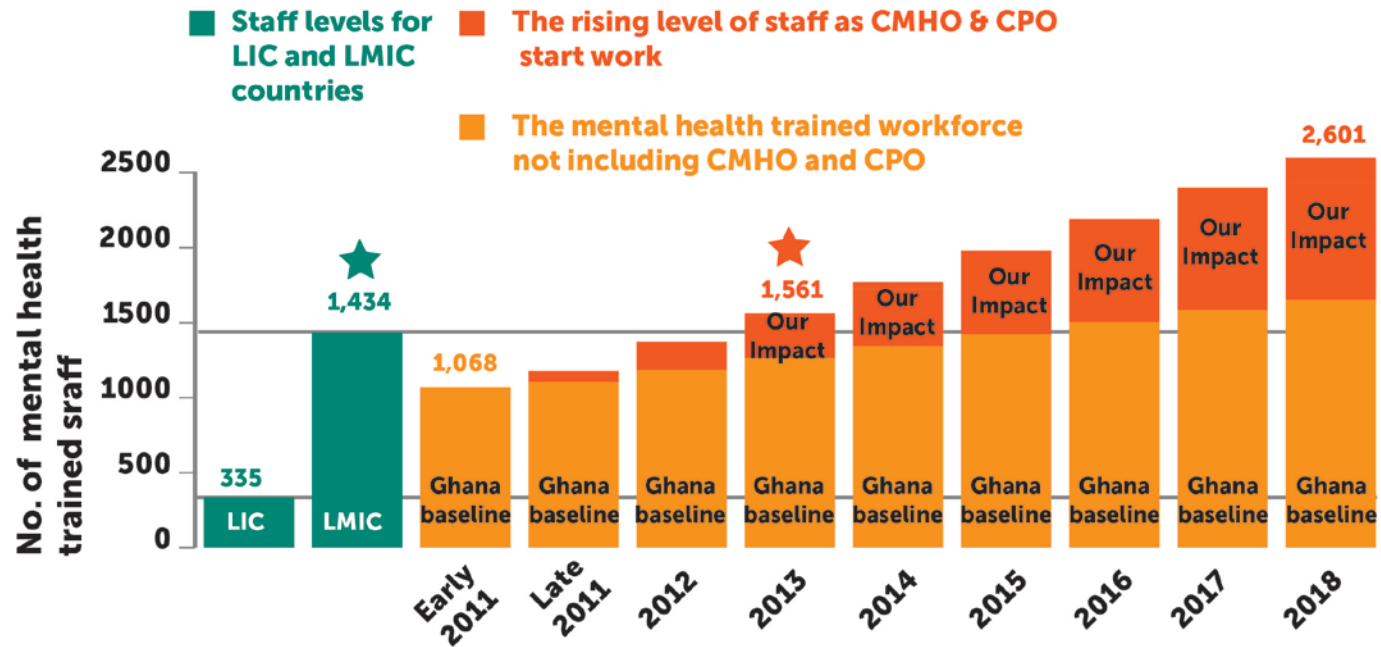
What we are doing

- The CMHO is a diploma level qualification working to detect mental illness in the community, educating local people about mental health and reducing stigma and discrimination.
- CMHOs have developed relationships with local families and social groups including schools, prayer camps and traditional healers.
- They are part of Ghana's successful rural health services

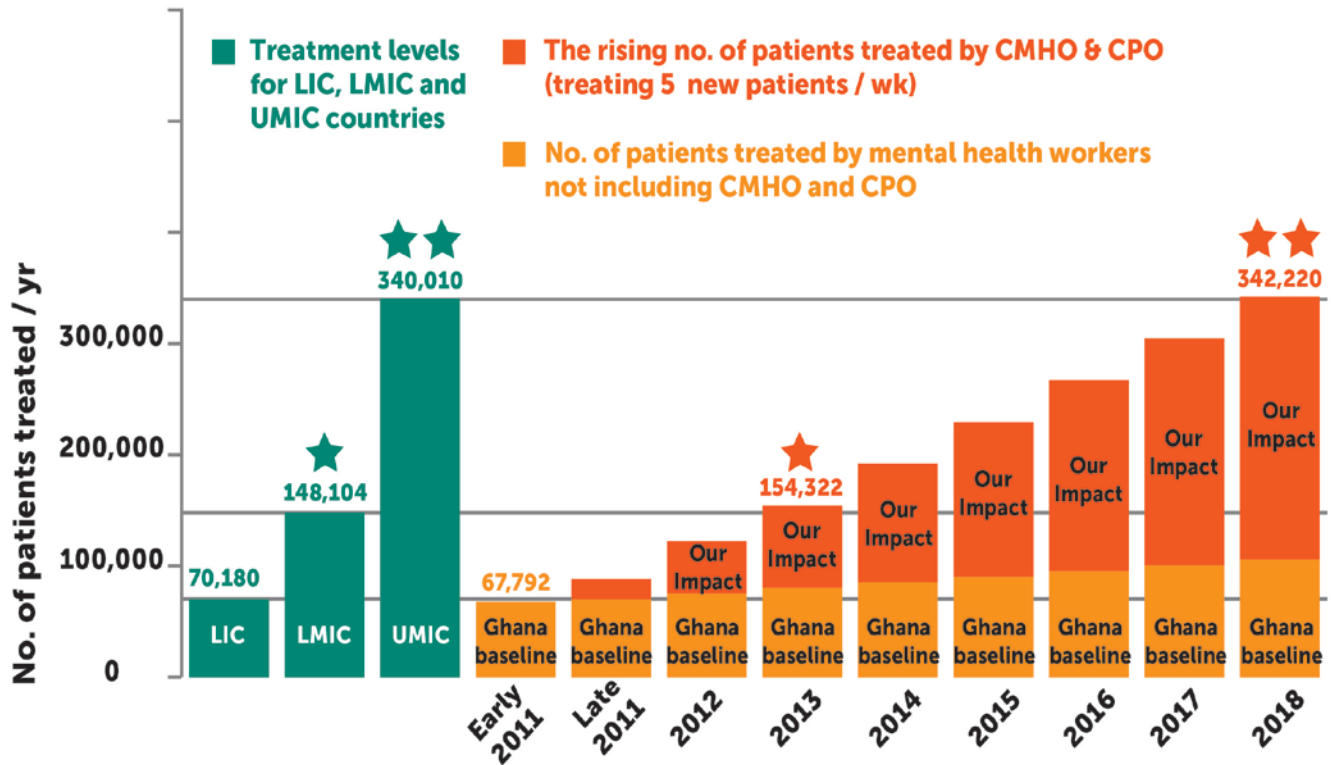
Results

- The number of trained community mental health workers have increased by 123% in the last 3 to 4 years
- To date slightly over 400 of these new mental health workers have been trained and deployed across all Regions of Ghana
- Several thousands of Ghana's most needy and vulnerable population have been helped so far

The Kintampo Project boosting the mental health workforce by 60%



The Kintampo Project increasing the number of patients treated per year by 500%



LIC = Low Income Country
 LMIC = Lower Middle income Country
 UMIC = Upper Middle Income Country

LIC, LMIC, UMIC are World Bank definitions
 In 2011 Ghana became a world Bank LMIC country

Challenges & Lessons learned

- Placement and defining non-conflicting job roles of the newly trained health providers posed a challenge in the initial stages
- Involvement of Government officials and Technocrats from the various Ministries at the onset is key to success and sustainability
- Health Professionals education and training must be in alignment with the National Health System for maximum impact

We continue to learn. Thank You

Dr. Mark Roberts, UK Lead presenting a report to the Minister of Health in Ghana



Launching of the Kintampo Trust in UK

