

CrimeSolutions: What Works, What Doesn't, What's Promising?



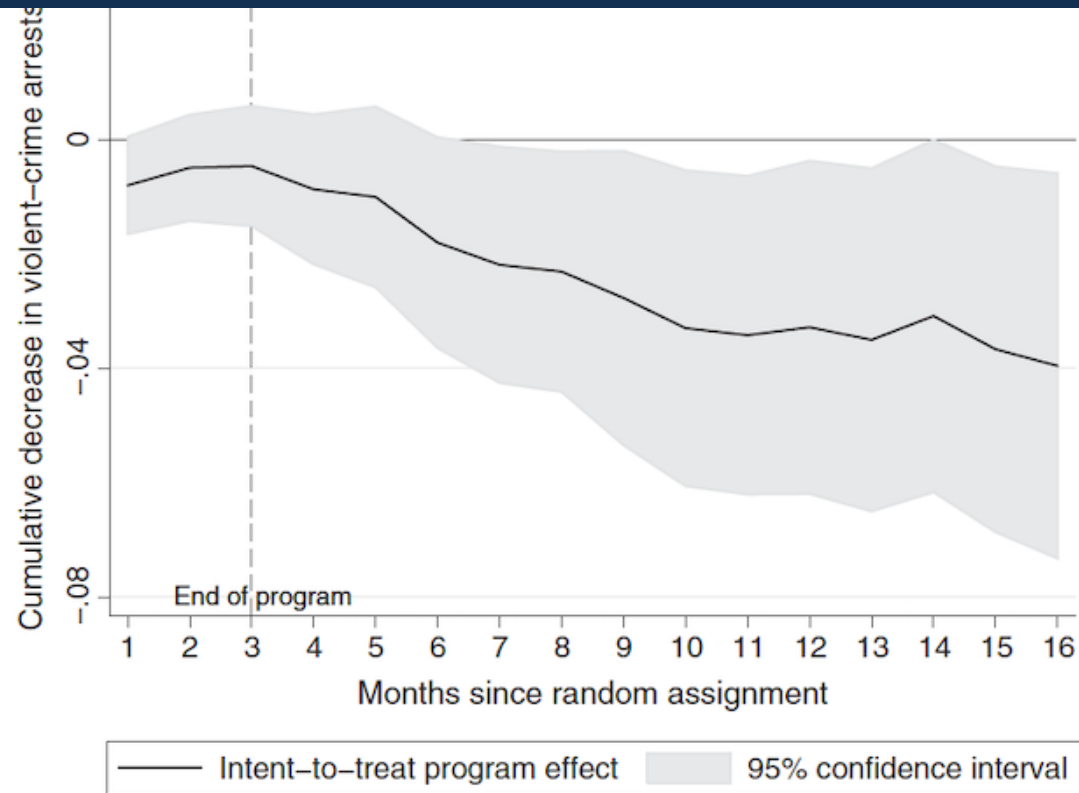
Naomi E. Goldstein, Ph.D.
Juvenile Justice Research & Reform Lab
Drexel University
neg23@drexel.edu

Based on the study, how would you characterize the evidence for this program?

Program model offers promise!

Fig. 2. Time path of violence decrease.

Shown is the regression-adjusted cumulative difference in the number of violent-crime arrests between treatment and control youth by month. Random assignment lottery occurred at month 0; program ended at month 3. Regressions include baseline covariates and blocking variables. Confidence intervals were calculated by using heteroskedasticity-robust SEs.



What rating would you assign it?

Program model = Promising, but nuance needed



One study, but well designed

Program model's findings: Medium ES & significant in important and relevant area

Combined vs. singular intervention model

View from perspective of consumers

Dangerous to say "no effect"

Strengths of Scoring Instrument

Many relevant questions



Excellent criteria for
study evaluation

Value of accessible,
digestible repository

Weaknesses of Scoring Instrument

Complex and confusing criteria

Misses nuance when:
Multiple outcomes, mixed findings
(outcomes & subgroups),
program and study goals differ

*Dangerously misleading:
Single category of
"ineffective" and "null" effects*



Scoring Instrument Takeaways



Assesses lots of great info for *study* evaluation

BUT

Misses big picture info for *program/policy* review



→ Needs clarity, transparency, & nuance



Naomi E. Goldstein, Ph.D.

Juvenile Justice Research & Reform Lab
Drexel University

neg23@drexel.edu