

Challenge Implementation at the National Institutes of Health (NIH)

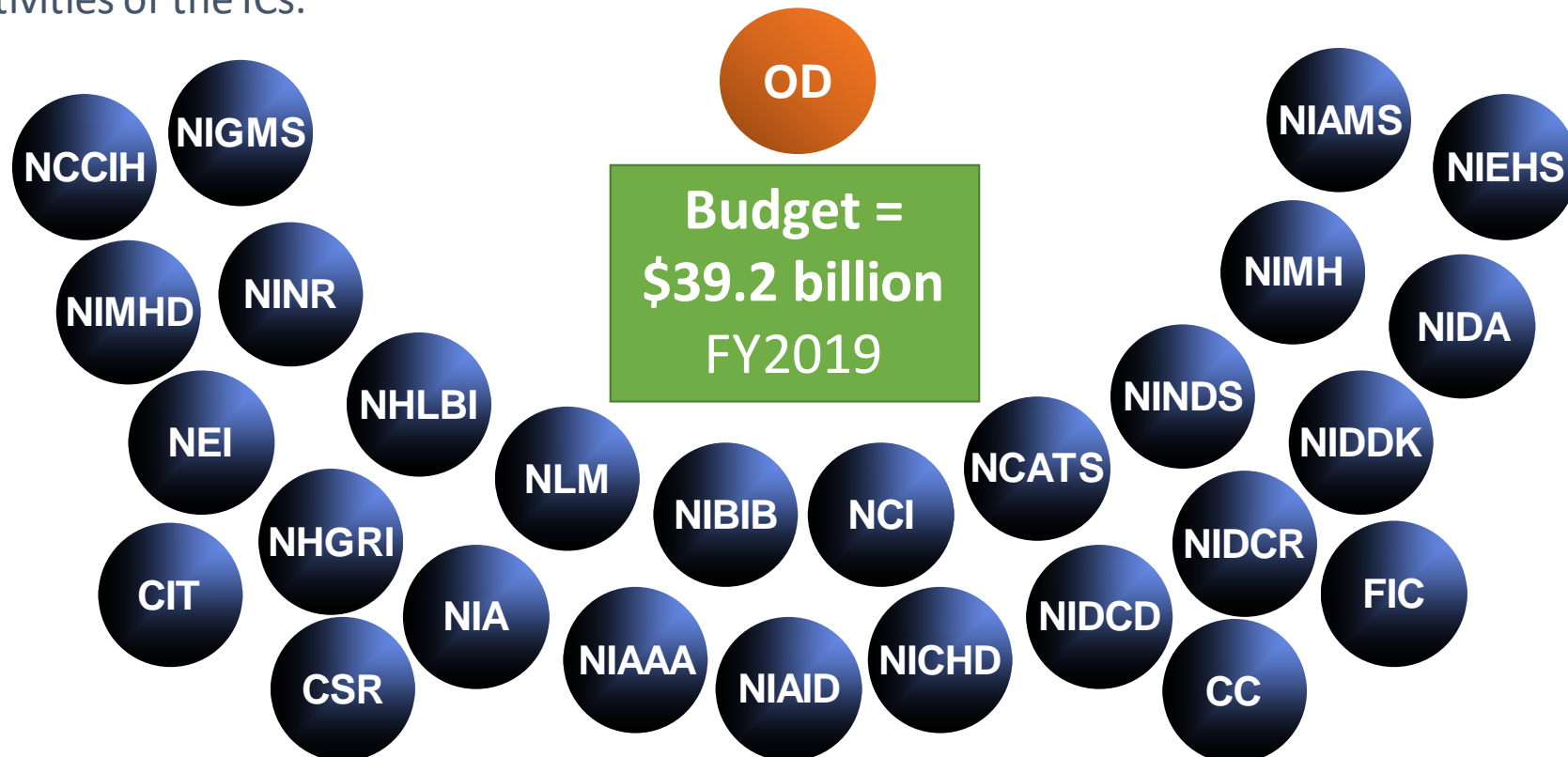
C. Taylor Gilliland, PhD
NIH Challenge Manager
OD/DPCPSI/IMOD
c.gilliland@nih.gov
301-451-3201

*NASEM Workshop on the Role of Inducement Prizes
May 29, 2019
Washington, D.C.*

The National Institutes of Health

The Nation's Steward of Medical & Behavioral Research

- **Mission:** seek fundamental knowledge about the nature and behavior of living systems and the application of that knowledge to enhance health, lengthen life, and reduce illness and disability.
- Composed of 27 Institutes and Centers (ICs) with unique research agendas, often focusing on particular diseases or body systems.
- NIH Office of the Director (OD) is responsible for setting policy for NIH and for planning, managing, and coordinating the programs and activities of the ICs.



Why Does NIH Conduct Challenges?

- Establish an ambitious goal within a relatively short time frame without bearing high levels of risk and paying only for results
- Stimulate creative and unanticipated solutions to a vexing scientific problem
- Reach beyond the “usual suspects” to increase the number and diversity of solvers tackling a problem and bring out-of-discipline perspectives to bear
- Promote solutions for and draw awareness and attention to a public health need
- Encourage the application of NIH research data to address a public health or medical problem
- Increase cost-effectiveness to maximize the return on taxpayer dollars
- Establish clear success metrics and validation protocols that themselves become defining tools and standards for the subject industry or field
- Stimulate private sector investment in a critical need area

Examples of Current NIH Challenges

Clinical Device



Department of Health and Human Services **Antimicrobial Resistance Rapid, Point-of-Need Diagnostic Test Challenge**

Develop *in vitro* diagnostic test to combat development and spread of antibiotic resistant bacteria or distinguish between bacterial and viral infections.

\$20,000,000 IN PRIZES

Open Until: 01/03/2020

Research Tool



National Institutes of Health
NCATS ASPIRE Design Challenge 4
Biological Assays for Translational
Innovation in Pain, Opioid Use Disorder
and Overdose

\$500,000 IN PRIZES

Open Until: 05/31/2019

Software App

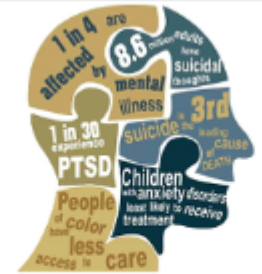


Department of Health and Human Services
iCare-AD/ADRD Challenge
Can you develop an app to improve care
coordination and/or navigation for
persons with dementia?

\$400,000 IN PRIZES

Open Until: 06/30/2019

Essay Contest



Department of Health and Human Services
**Speaking Up About Mental Health!
This Is...**

High school students, share YOUR story
on how to reduce mental health stigma
and overcome cultural barriers.

\$7,000 IN PRIZES

Open Until: 05/31/2019

**FY11-FY18
Challenges
@ NIH**

Challenges



45+

Participants



3500+

Submissions



1600+

Winning Entries



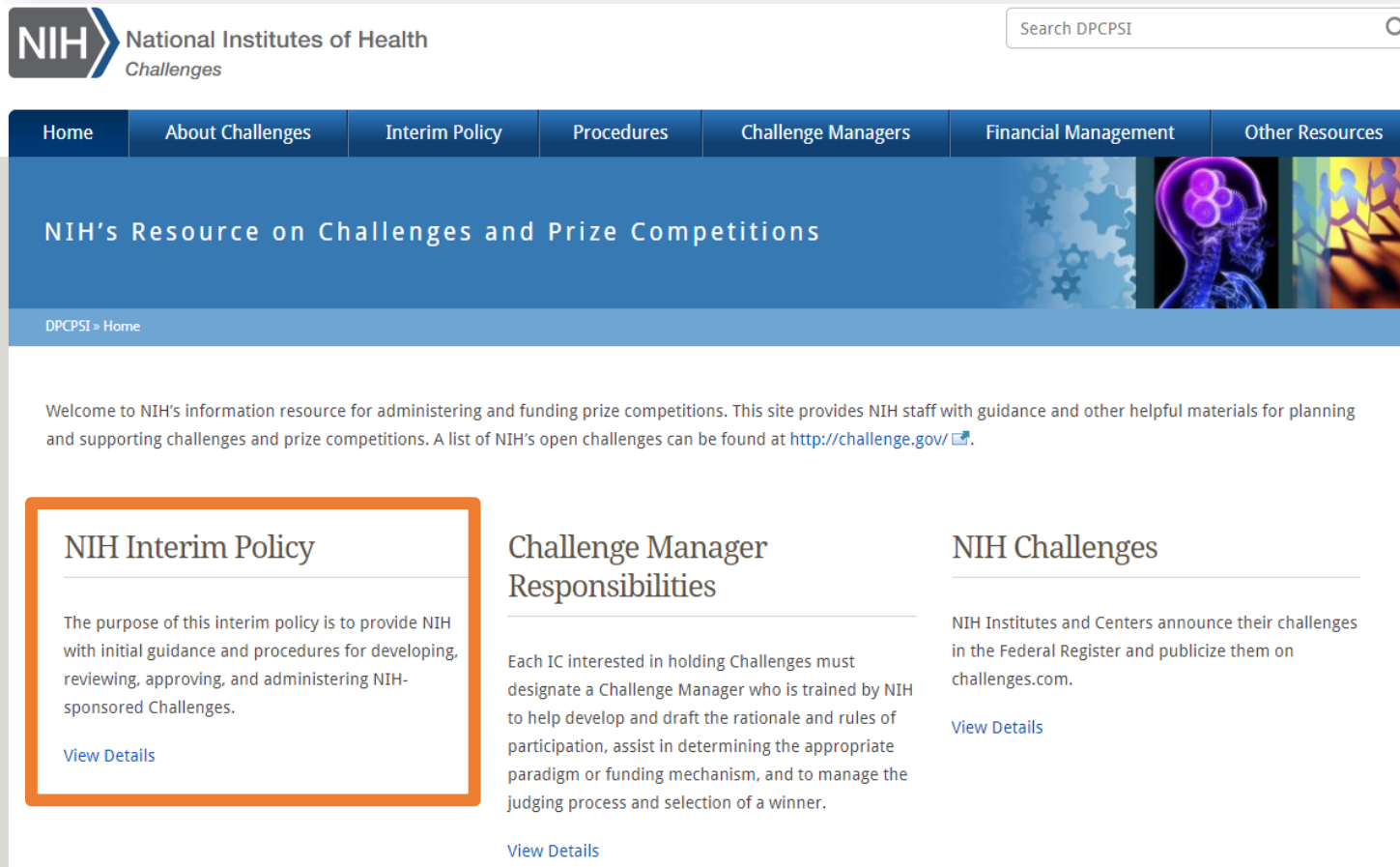
170+

Cash Prizes



\$13 million+

Updated Interim Policy for NIH Challenges



The screenshot shows the NIH Challenges website. The top navigation bar includes links for Home, About Challenges, Interim Policy, Procedures, Challenge Managers, Financial Management, and Other Resources. A search bar labeled 'Search DPCPSI' is located in the top right. Below the navigation bar is a banner with the text 'NIH's Resource on Challenges and Prize Competitions' and a graphic of a brain and puzzle pieces. A sub-header reads 'DPCPSI » Home'. The main content area welcomes visitors and provides a link to a list of open challenges. Three columns of content are visible: 'NIH Interim Policy' (highlighted with an orange border), 'Challenge Manager Responsibilities', and 'NIH Challenges'. Each column includes a brief description and a 'View Details' link.

NIH Interim Policy

The purpose of this interim policy is to provide NIH with initial guidance and procedures for developing, reviewing, approving, and administering NIH-sponsored Challenges.

[View Details](#)

Challenge Manager Responsibilities

Each IC interested in holding Challenges must designate a Challenge Manager who is trained by NIH to help develop and draft the rationale and rules of participation, assist in determining the appropriate paradigm or funding mechanism, and to manage the judging process and selection of a winner.

[View Details](#)

NIH Challenges

NIH Institutes and Centers announce their challenges in the Federal Register and publicize them on challenges.com.

[View Details](#)

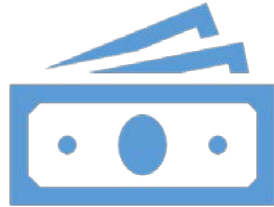
Key Components of the Policy:

- Statutory authority
- Award approving official
- Expenditure mechanism
- Total prize purse
- Rules for participation and process for participant registration
- Eligibility restrictions
- Intellectual property
- Judging criteria, COI, and review processes
- Advertising and outreach
- Challenge management and resources
- Review, clearance, and approval timelines
- Paying the winners: individuals vs. entities

NIH IC Challenge Managers: Key Roles & Responsibilities



**Help draft
challenge
announcement**



**Determine
expenditure
mechanism**



**Obtain
necessary
approvals**



**Arrange
Challenge.gov
posting**



**Help announce
challenge &
engage public**



**Serve as POC
b/w IC and OD
personnel**



**Ensure
timelines are
adhered to**



**Manage judging
& winner
selection
process**



**Disburse
awards to
winners**



**File
required
reports**

NIH Challenge Design Process

Example Challenge Team



Cash prize or non-cash prize?

- What is necessary to incentivize participation?
- What is the appropriate expenditure mechanism?

Manage internally or contract out?

- What resources (financial and human) are available?
- Which approach is more cost-effective?
- Does the IC possess the IT infrastructure to accept, process, and evaluate submissions?

How will potential participants learn about the challenge?

- What communication products are needed?
- Will there be announcements at key events/conferences, webinars for interested participants, social media postings, etc.?

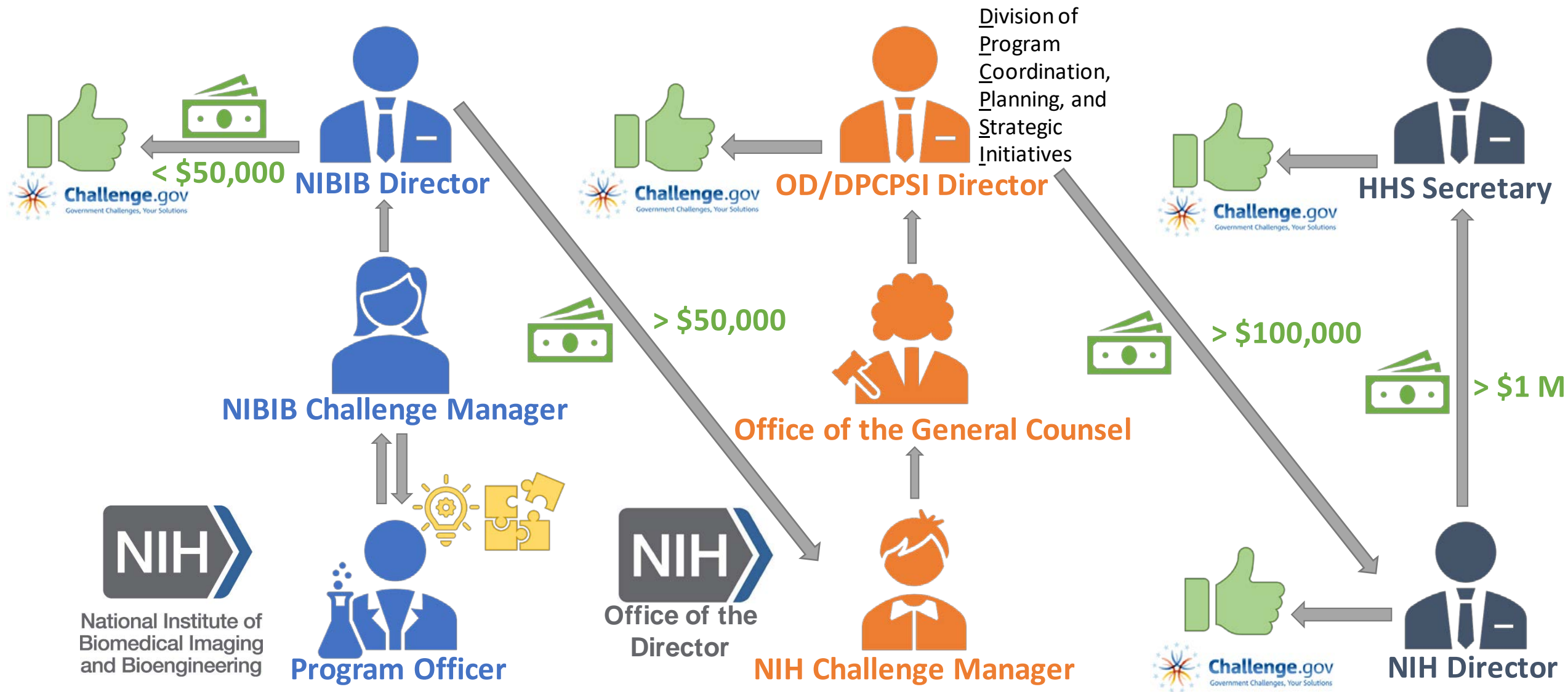
Who will judge the entries?

- Judges must be Federal employees or SGEs
- Will a technical review panel be necessary/advantageous?

What happens after the challenge?

- Opportunities for follow-on funding or venture capital for further development?
- How will the outcomes and impacts be evaluated?

NIH Challenge Review & Clearance Process



Examples of NIH Challenge Review Considerations

- ☐ Does the challenge advance NIH's and the IC's mission?
- ☐ Can the desired outcome be achieved more efficiently or effectively with a grant, contract, or cooperative agreement?
- ☐ Did the IC "consult widely both within and outside the Federal government" when selecting the topic of the challenge?
- ☐ Are the judging criteria sufficiently clear and detailed to enable the judging panel to confidently pick winners?
- ☐ Are the eligibility rules and submission directions sufficiently clear and detailed to enable a wide variety of participants to compete?
- ☐ Is the cash prize purse appropriate to incentivize participation while not risking overpayment for results?
- ☐ Is the expenditure mechanism for the cash prize appropriate? (appropriated funds, gift funds, contracts, public-private partnerships, intra-agency agreements, etc.)