

NATIONAL
ACADEMIES

Sciences
Engineering
Medicine

INCOSE, Human System Integration Working Group

Paul Lambertson

Co-Chair INCOSE HSI working group



MAY 2025

INCOSE Human System Integration



Working Group

HUMAN SYSTEMS INTEGRATION

- Agenda
 - Introduction to INCOSE
 - General Information
 - Vision, Mission and Objectives
 - INCOSE HSI group
 - Mission and purpose
 - Products
 - Future of HSI
 - Collaborations
 - Upcoming events
 - Contact us

INCOSE General Information

- The International Council on Systems Engineering (INCOSE) is a not-for-profit membership organization founded to develop and disseminate the transdisciplinary principles and practices that enable the realization of successful systems. INCOSE is designed to connect systems engineering professionals with educational, networking, and career-advancement opportunities in the interest of developing the global community of systems engineers and systems approaches to problems. We are also focused on producing state-of-the-art work products that support and enhance this discipline's visibility in the world.

INCOSE - INTERNATIONAL COUNCIL ON SYSTEMS ENGINEERING

CONTACT US

INCOSE Global & Americas

📍 7670 Opportunity Road, Ste. 220
San Diego, CA 92111-2222 USA

☎ 1-858-541-1725

✉ info@incose.net

INCOSE EMEA

📍 Hermann-Köhl-Straße 7
D-28199 Bremen, Germany

☎ +49 421 9601-495

✉ info@incose.net





Our Vision

To unite and advance the global systems community



Our Mission

INCOSE fosters systems engineering knowledge exchange, application, education, and research. We are dedicated to being the world's trusted authority and forum for the practice, science, and art of systems engineering.

Strategic Objectives



**Advance systems
engineering as the
world's trusted
authority**



**Expand the
systems
engineering
community while
growing INCOSE**



**Foster professional
development and
systems
engineering
competencies**

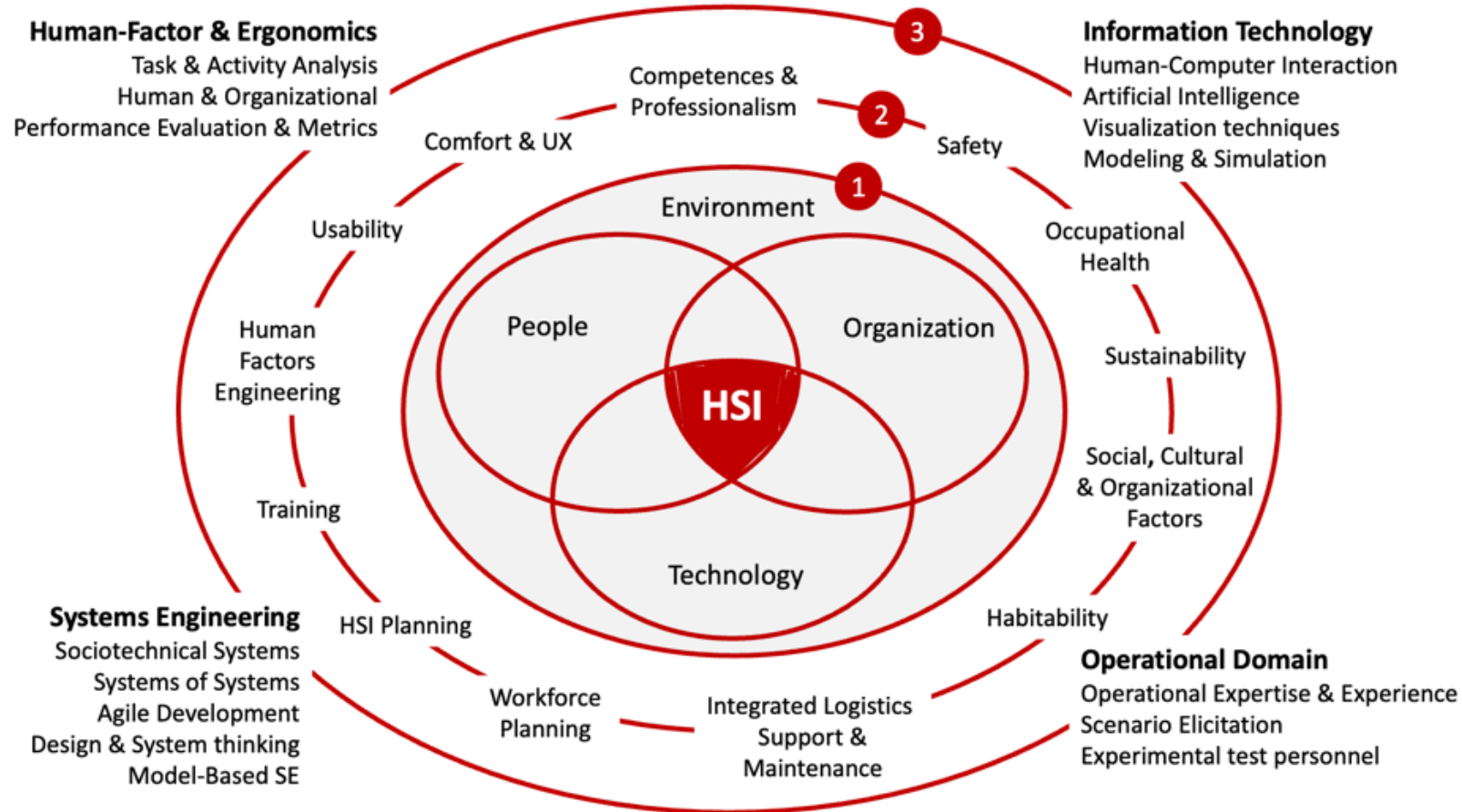


**Achieve
operational
excellence**

HSI Working Group Purpose & Mission

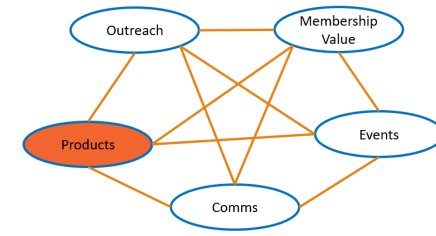
- Human Systems Integration (HSI) is a transdisciplinary sociotechnical and management approach to systems engineering used to ensure that a system's technical, organizational, and human elements are appropriately addressed across the whole system lifecycle, service or enterprise system. HSI considers systems in their operational context together with the necessary interactions between and among their human and technological elements to make them work in harmony and cost-effectively, from the early design to disposal.
- **Our mission**, is to ensure all design and engineering disciplines include human and socio-technical interaction and integration to enable system performance.

Why is HSI important for Systems Engineering?



The Scope of Human Systems Integration

- Humans are part of nearly every system, the ability for the human to be integrated into a system at many levels creates better usable and safe systems.
- HSI is a technical and management approach, explicitly aligning with the Systems Engineering processes & lifecycle.

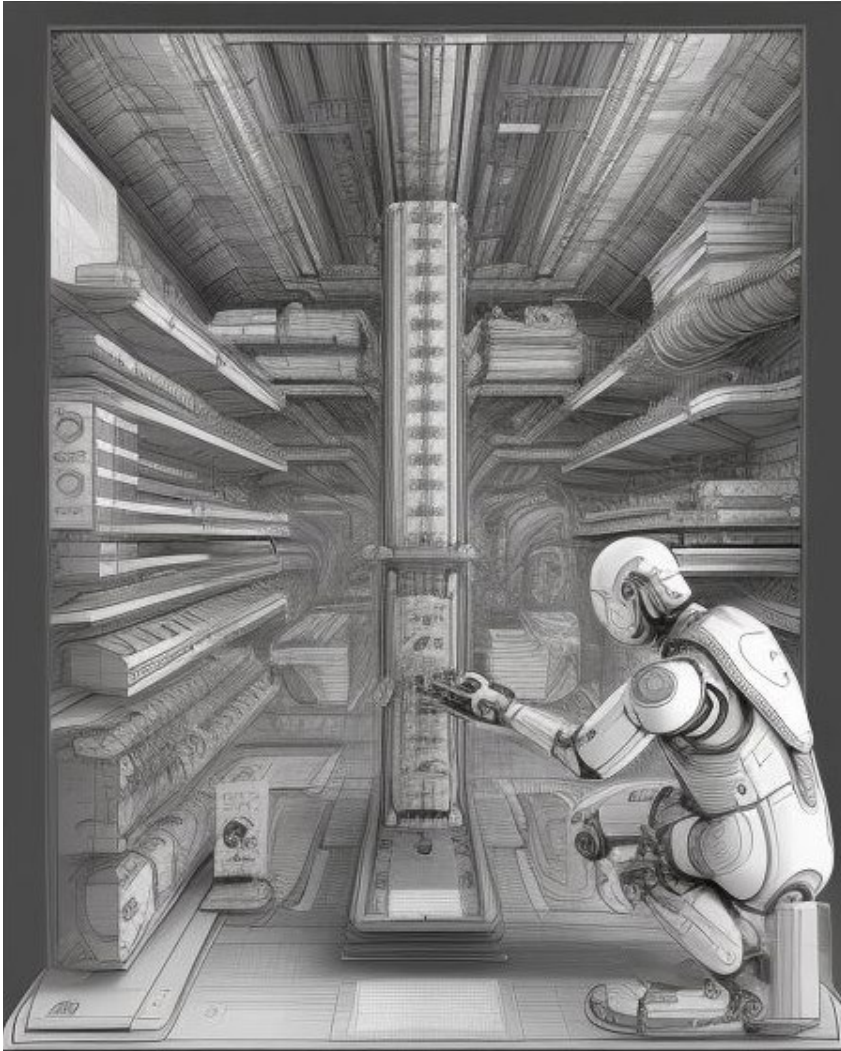


Products

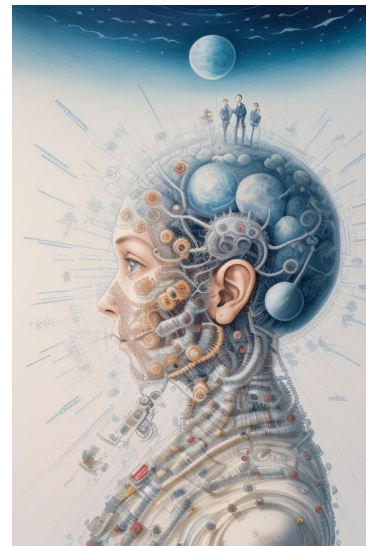
Key Focus for 2025 is the HSI Primer

- Volume One (released Oct 2023)
- Four more volumes planned for release
 - Volume 1, Introduction to Human System Integration (Complete)
 - Volume 2, Fundamentals (In Progress)
 - Volume 3, Transdisciplinary Human Systems Integration (In Progress)
 - Volume 4, Humans Systems Integration domain specific case studies and applications
 - Volume 5, Human Systems Integration Reference Materials


The Future of Human Systems Integration




- Integration of artificial intelligence, Human and AI teaming
- Integration of Human Readiness Levels with Technology Readiness Levels
- Organizational Readiness Levels
- Relationships of the systems Vee to HSI
- Integration of the human as part of the system



Collaborations/Upcoming Events



HSI2025
Human Systems
Integration
Workshop



Venue: TBD
Date: November 2025

*Workshop = Interactive,
not just talks*

International Ergonomics Association

- At IEA/HSI 2024 agreed to establish a HSI technical committee between INCOSE and IEA
- Building links between the technical community and working group
- Host INCOSE HSI Workshop with the inclusion of IEA

SEBOK - HSI



SEBoK GUIDE TO THE SYSTEMS ENGINEERING BODY OF KNOWLEDGE

Page Read [View source](#) [View history](#) [PDF Export](#)

Human Systems Integration

[Guide to the Systems Engineering Body of Knowledge \(SEBoK\)](#) > [Special Search](#) > [human systems integration \(hsi\)](#) > Human Systems Integration

Lead Author: Ben Schwartz, Holly Handley **Contributing Authors:** Guy Boy, Alice Squires, Paul Phister, Stuart Booth, and Dick Fairley

Human systems integration (HSI) is "the management and technical discipline of planning, enabling, coordinating, and optimizing all human-related considerations during system design, development, test, production, use and disposal of systems, subsystems, equipment and facilities." (SAE 2019).

Though used by industries around the world, HSI was initiated by the U.S. Department of Defense (DoD) as part of the "total system approach" to acquisition. The goal of HSI is to "optimize total system performance (hardware, software, and human) operational effectiveness, and suitability, survivability, safety, and

Connecting



Email us on:

hsi@incose.net

*comes to the HSI WG
chair & co-chairs*



Join our community on Viva Engage

note this is available only to INCOSE members,

*If you're already a member and need help accessing Viva engage
contact helpdesk@incose.net*



Join the private LinkedIn Group:

<https://www.linkedin.com/groups/13944319/>

It's quiet, but it's there for you!



Email me:

paul.lambertson@incose.net

“Systems design must include not only the design of innovative technologies but their artful integration with the rest of the social and Material world”

LUCY SUCHMAN