



NIH Peer Review, A CSR Perspective

Deborah Hodge, Ph.D.

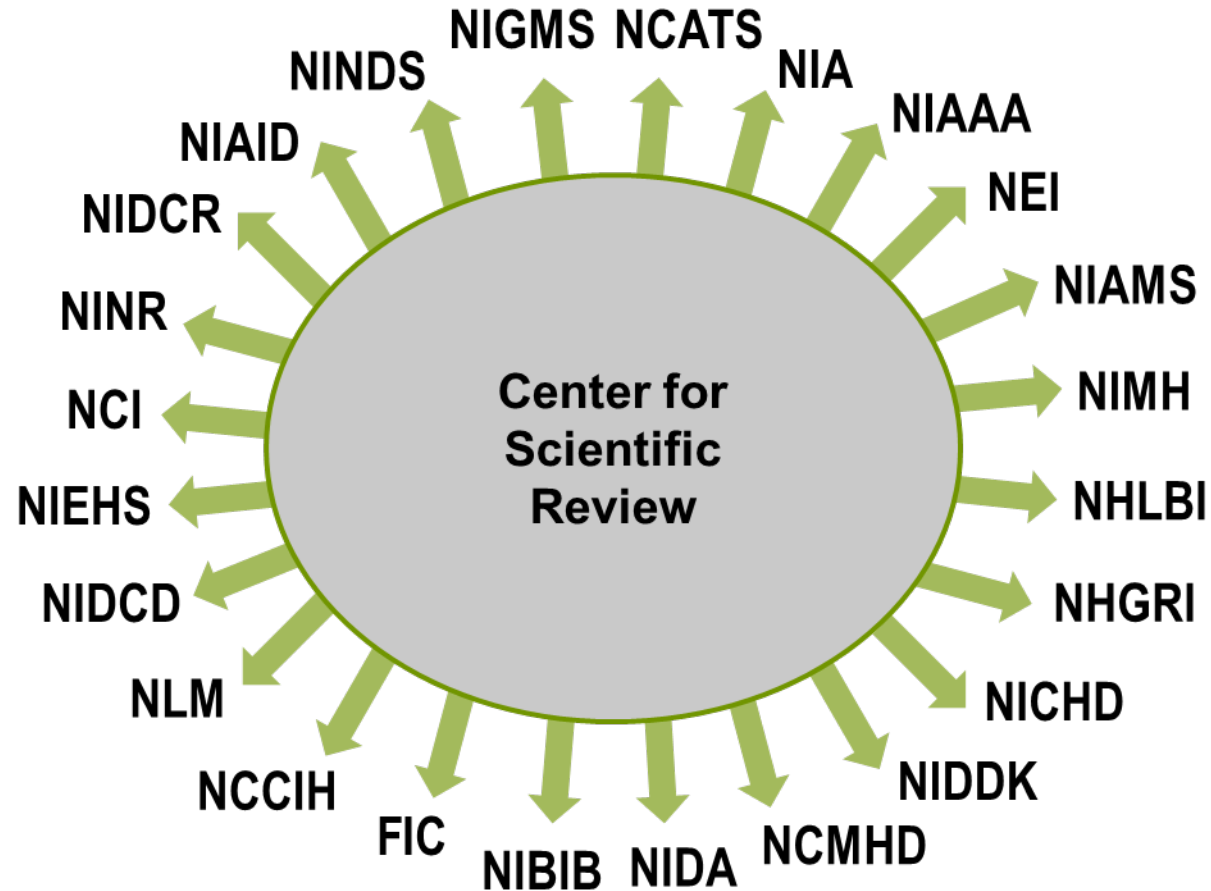
Scientific Review Officer, Hypersensitivity, Autoimmune, and Immune-mediated
[HAI] Diseases Study Section
Infectious Diseases and Immunology B (IDIB) IRG
Center for Scientific Review, NIH

CSR Mission



To see that NIH grant applications receive fair, independent, expert, and timely reviews – free from inappropriate influences – so NIH can fund the most promising research.

24 NIH Institutes and Centers Fund Grants

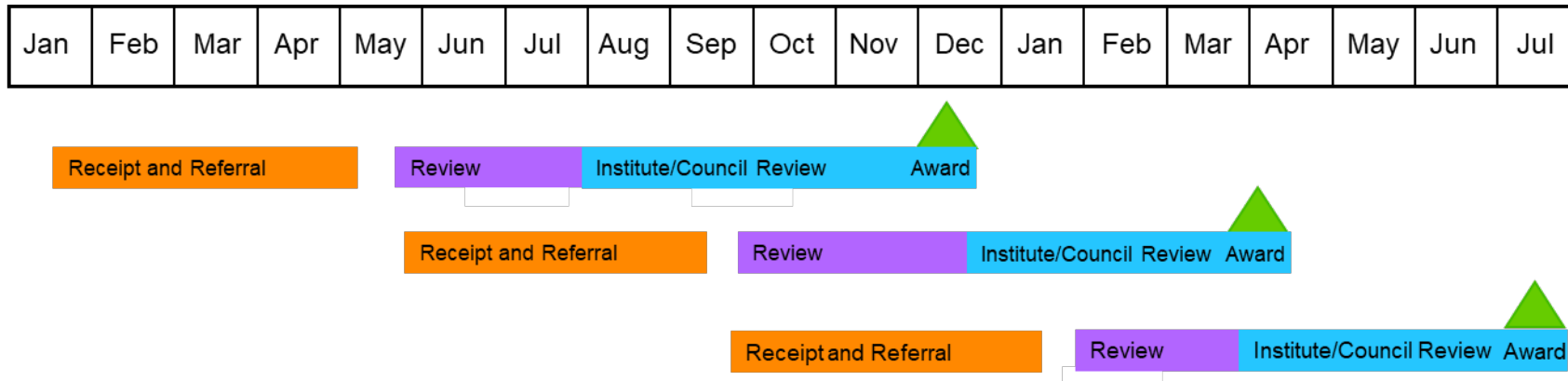


Scope of CSR's Operations



Timeframe from Submission to Award

There are three main overlapping cycles per year



<http://grants1.nih.gov/grants/funding/submissionschedule.htm>

The Gateway for NIH Grant Applications

The Center for Scientific Review



- **Receives all NIH grant applications**
- **Assigns applications to one or more NIH Institute or Center for potential funding**
- **Assigns applications to CSR or NIH Institute review groups**
- **Conducts initial scientific merit review of most NIH research applications**

CSR's Division of Receipt and Referral

Determines if the Application is

- On time
- Formatted correctly
- Complete
- Compliant with NIH policy



Assigns the Application to

- Institute(s) or Center for funding consideration
- Review group

Assignment to CSR Study Sections

Within an IRG, applications are assigned to:

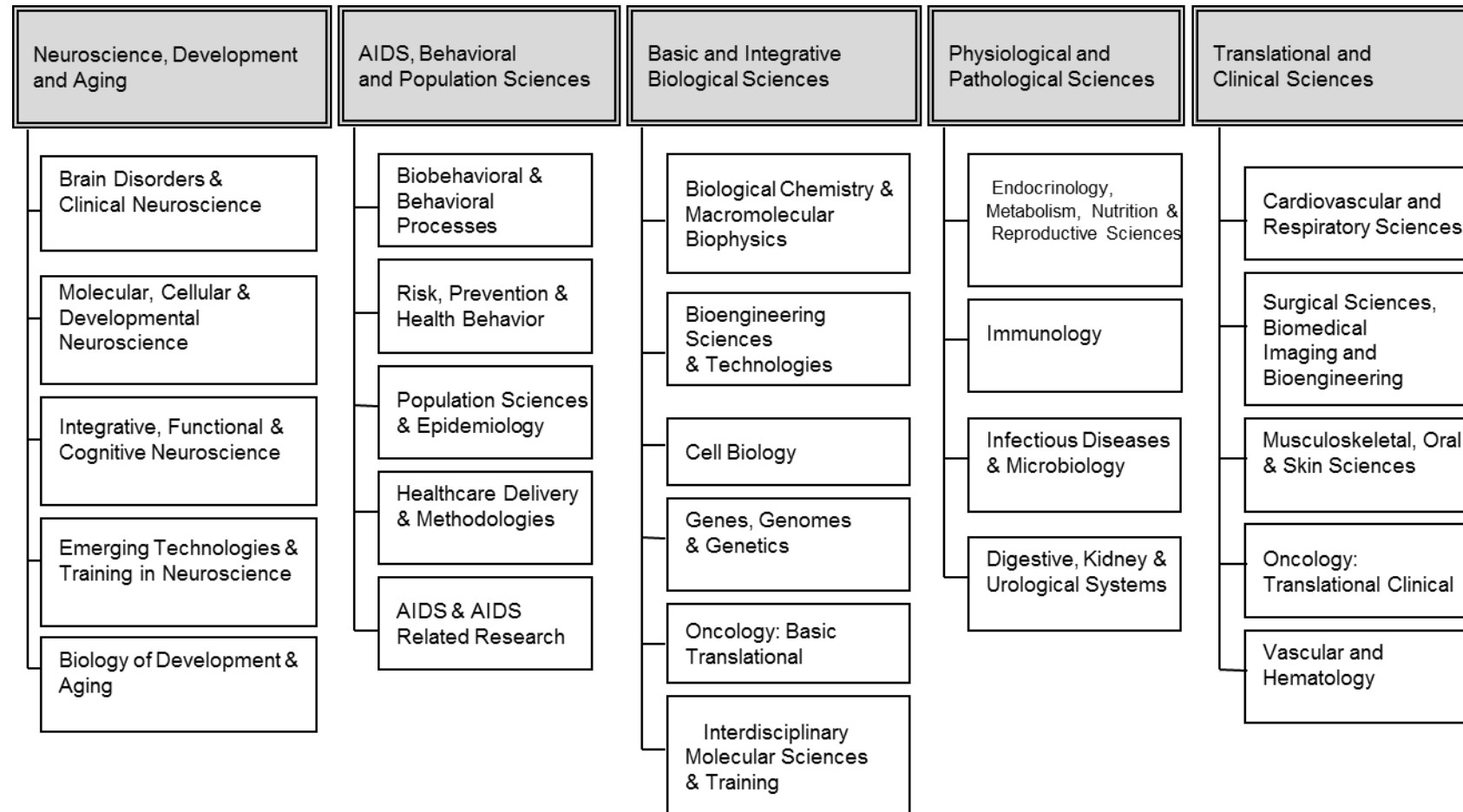
Standing Study Sections

- When subject matter of application matches the referral guidelines for the study section

Special Emphasis Panels (SEPs)

- When the subject matter does not fit into any study section—recurring or for one time conflicts or initiatives.
- When assignment of an application to the most appropriate study section creates a conflict of interest
- When certain types of grants are sought (e.g., fellowships, SBIRs, AREAS)

Divisions and Integrated Review Groups (IRGs)



240 Study Sections and Recurring Special Emphasis Panels

Scientific Review Officer



- Recruits reviewers and assigns applications
- Manages the meeting and conflicts
- Prepares summary statements
- Provides information to NIH Institutes and Centers

Before the Study Section Meeting



Each application is assigned to 3 or more reviewers 5-6 weeks in advance

Reviewers Assess Each Application by Providing:

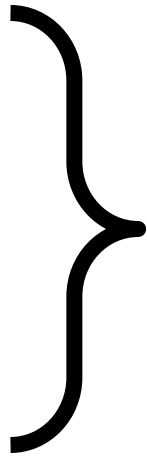
- Preliminary Overall Impact score
- Criterion scores for each of the 5 core review criteria
- Comment on appropriateness of the budget
- A written critique

Review Criteria

5 Scored Review Criteria

- **Significance**
- **Investigator(s)**
- **Innovation**
- **Approach**
- **Environment**

Each scored from 1-9



Overall Impact

Assessment of the likelihood for the project to *exert a sustained, powerful influence on the research field(s) involved*

Scored from 1-9

Scoring Overall Impact

Overall Impact	Scores	Examples
High	1 2 3	Applications address a problem of high importance/interest in the field. May have some or no technical weaknesses.
Medium	4 5 6	<p>Applications may address a problem of high importance in the field, but weaknesses in the criteria bring down the overall impact to medium.</p> <p>Applications may address a problem of moderate importance in the field, with some or no technical weaknesses.</p>
Low	7 8 9	<p>Applications may address a problem of moderate/high importance in the field, but weaknesses in the criteria bring down the overall impact to low.</p> <p>Applications may address a problem of low or no importance in the field, with some or no technical weaknesses.</p>

At the Meeting

Not Discussed Applications

- About half the applications will be discussed
- Applications unanimously judged by the review committee to be in the lower half are not discussed

Clustering of Review

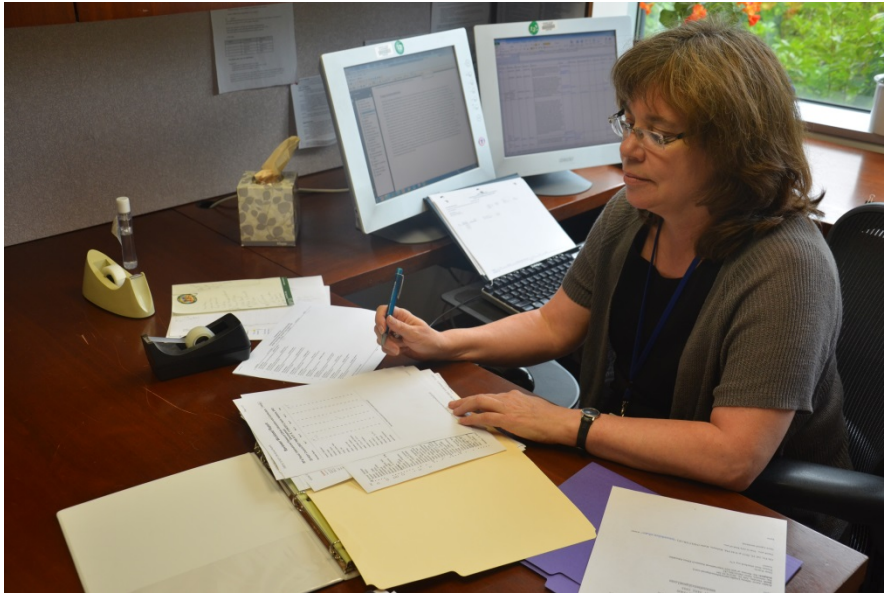
- New Investigator R01 & some types of applications are often reviewed together

Order of Review

- Applications to be discussed are reviewed in random order within each cluster.



After The Review



The SRO

- Prepares summary statements within 30 days
- Provides information to NIH Institutes and Centers

Key NIH Review and Grants Web Sites

NIH Center for Scientific Review

<http://www.csr.nih.gov>



NIH Office of Extramural Research

<http://grants.nih.gov/>

