

Current and Projected Trends of the Cancer Careforce

Suanna S. Bruinooge, MPH

Division Director, Research Strategy and Operations

Center for Research and Analytics (CENTRA)

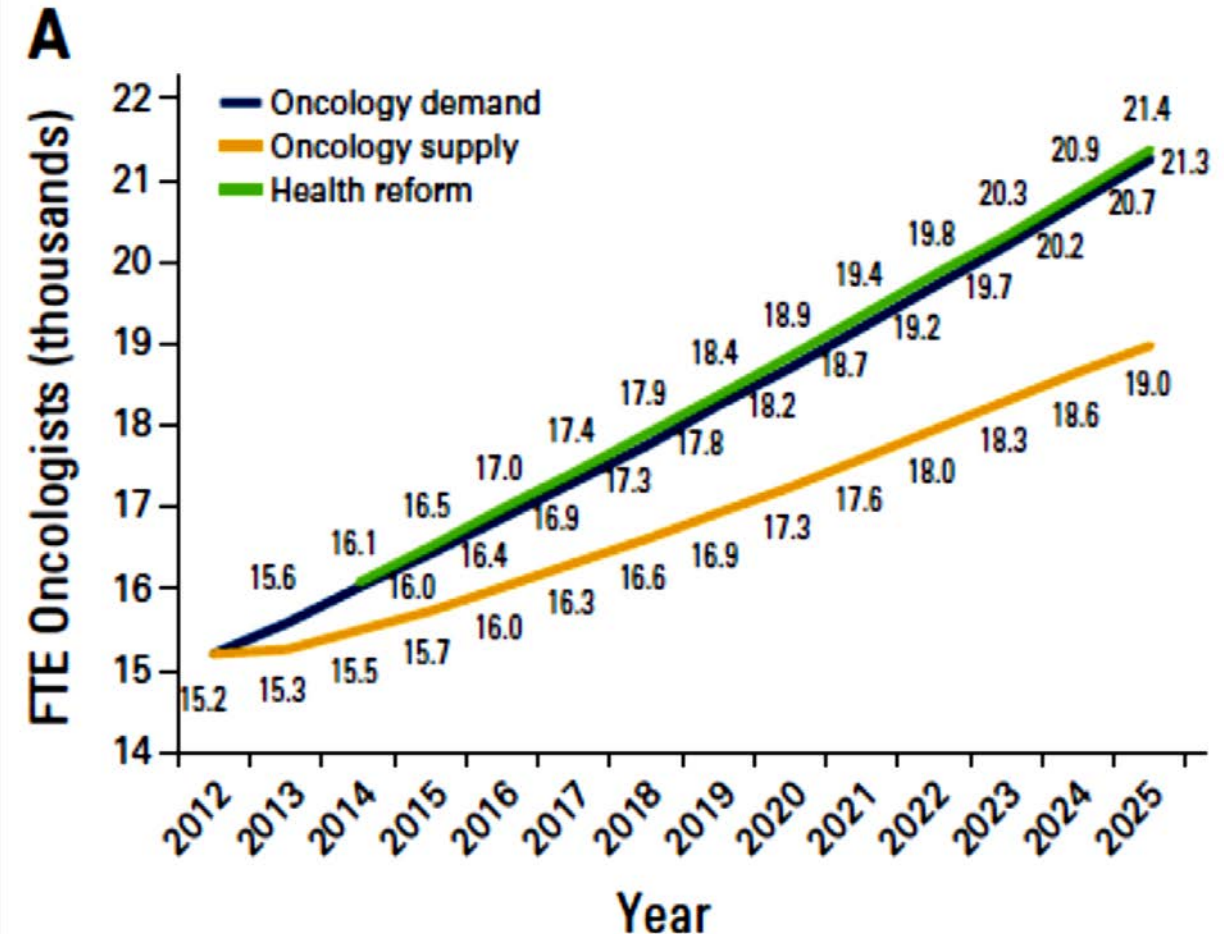
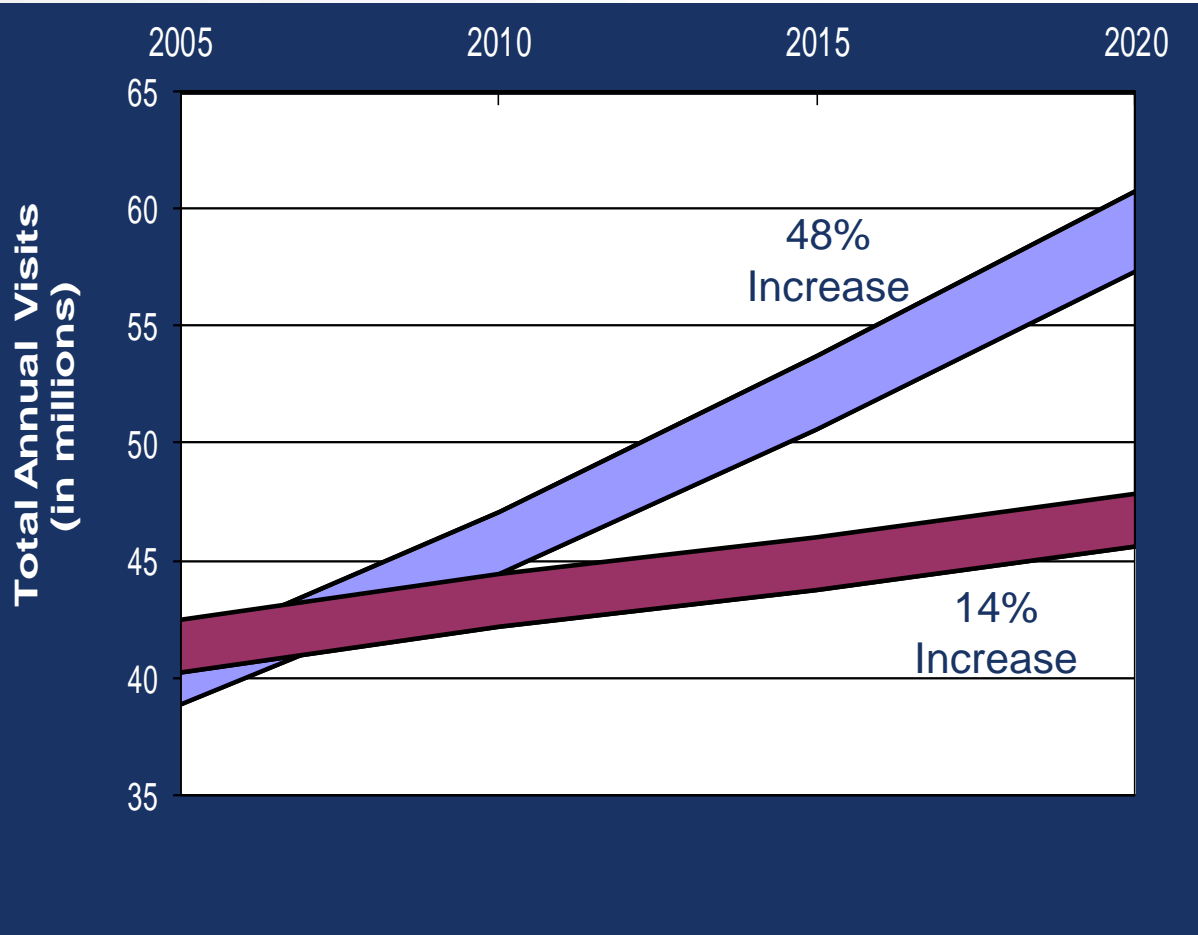
American Society of Clinical Oncology (ASCO)

February 11, 2019 – *DRAFT*

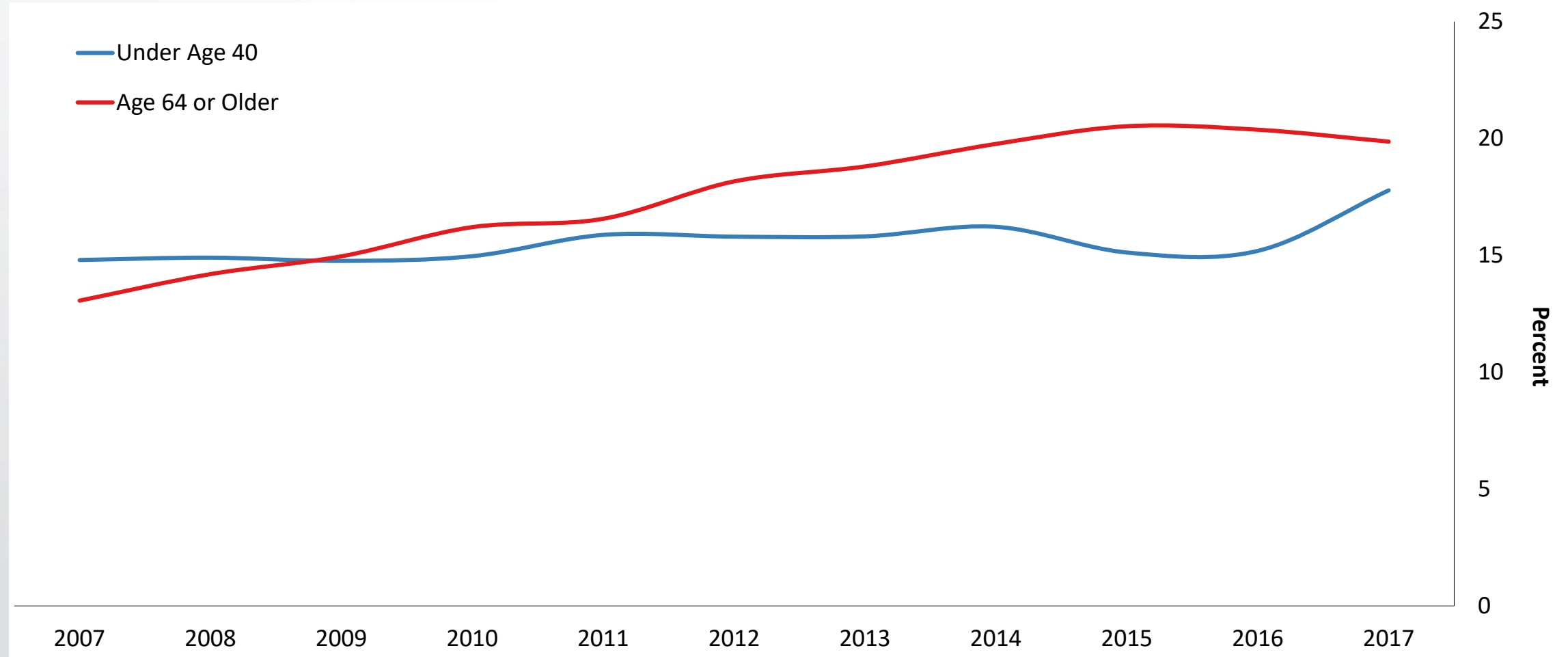
Overview of Presentation

- Supply and Demand for Oncologist Services
- Understanding the Roles of Advanced Practice Providers
- Geographic Distribution of Oncology Practices
- NCI-ASCO Teams in Cancer Care Delivery
- Perspectives of Cancer Survivors

ASCO Workforce Studies – 2007 and 2014



Percentage of Oncologists by Age Group

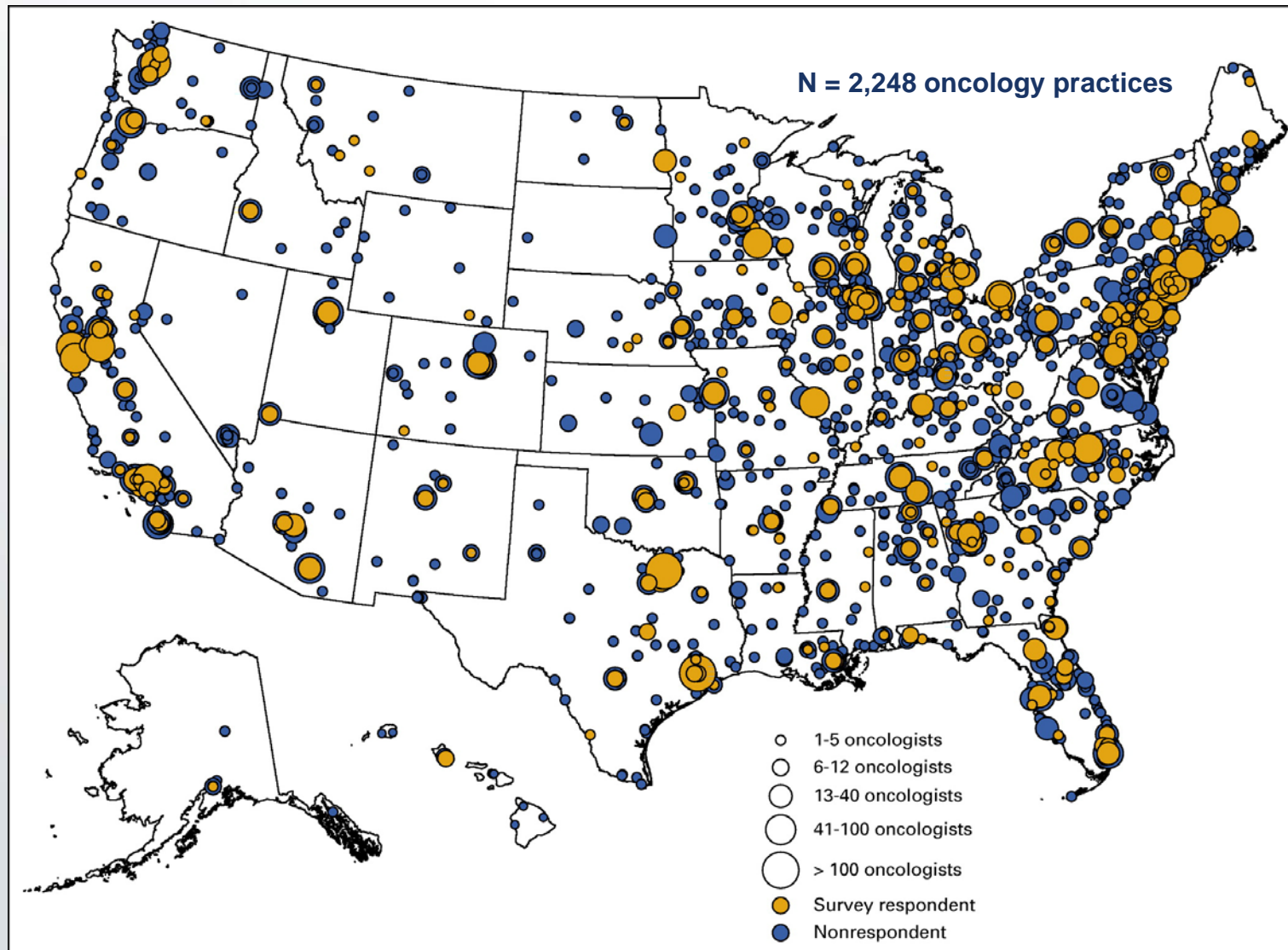


Source: ASCO Workforce Information System

Understanding the Role of Advanced Practice Providers in Oncology in the United States – Major Findings

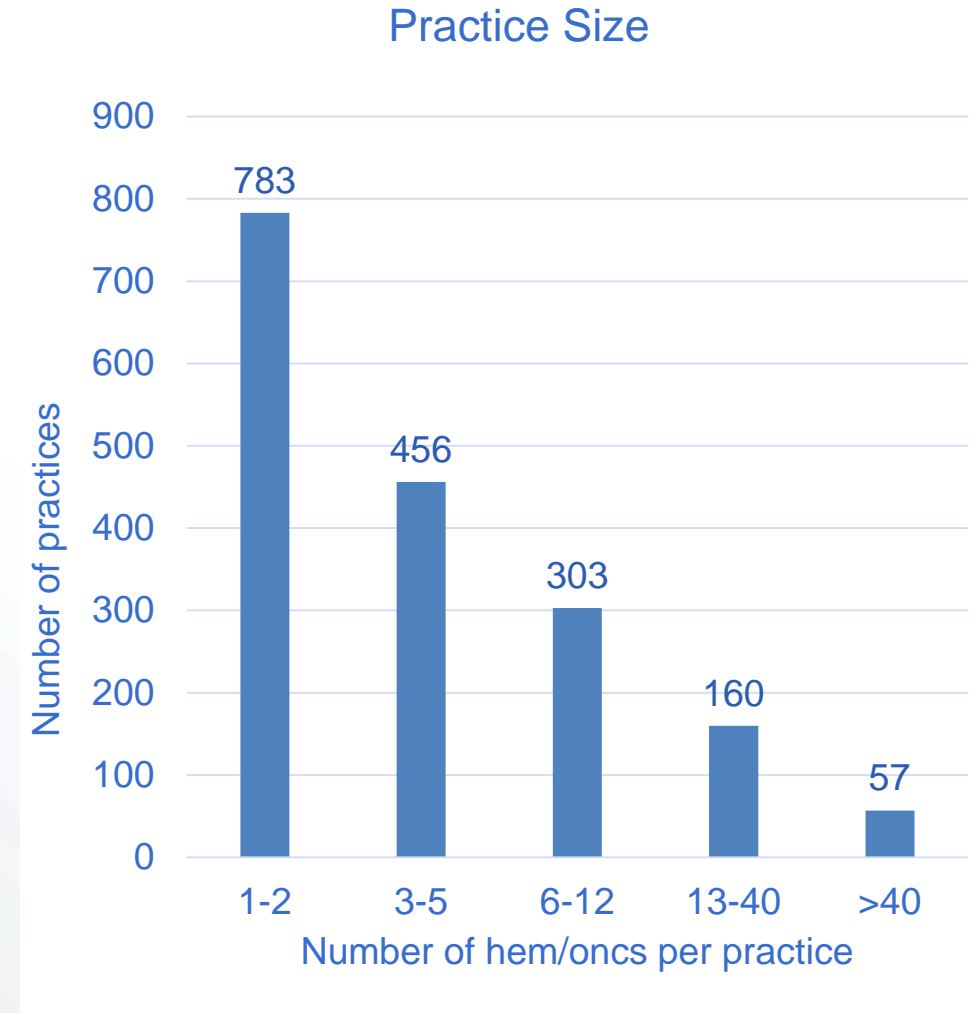
- Even more challenging to identify APPs engaged in specialty care than physicians
 - Oncology APPs: 5,350-7000
- Oncology APPs contribute significantly to patient care with a wide array of patient care activities
 - 85% is the median of time spent on patient care [insert range and # of respondents]
- Most oncology APPs practice either independently (28%) or in combined visits (65%)
 - Minority (7.5%) report only shared visits
- Satisfaction levels of oncology APPs are very high
 - Working in oncology (90%), practice model (80% NP/76% PA), compensation (67% NP/65% PA)
- Collaboration and teamwork are key to clinical practice and research!

Oncology Practices by Size



Analysis of 2018 Medicare Data

- **12,441** U.S. hematologists and/or medical oncologists
 - 6,481 other adult subspecialty oncologists
- **1,759 practices** with at least one hematologist and/or medical oncologist
 - 783 (45%) practices have 1-2 hem/oncs
 - 774 (44%) have multiple sites of care
 - 283 (16%) have at least one hem/onc practicing in a rural location
 - 226 practices (80%) > 20% of hem/oncs at rural sites
 - 89 practices (31%) 100% rural sites
 - 740 (42%) practices offer other oncology specialties



Zip Code Correlates to Health Outcomes

Proximity to Cancer Care in Rural Areas

Rural patients are nearly

2x as likely to say there **aren't enough cancer doctors** near them as non-rural patients

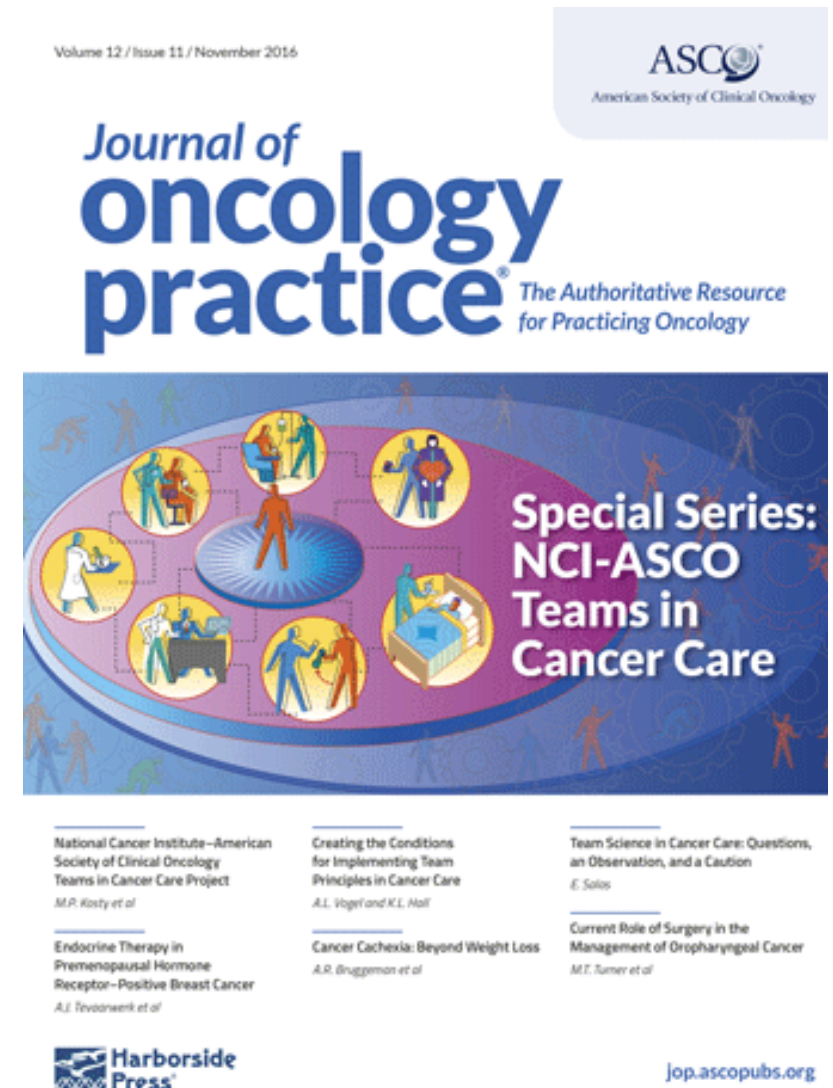
Rural patients typically spend

66% more time traveling one way to see their cancer doctor than those in non-rural areas

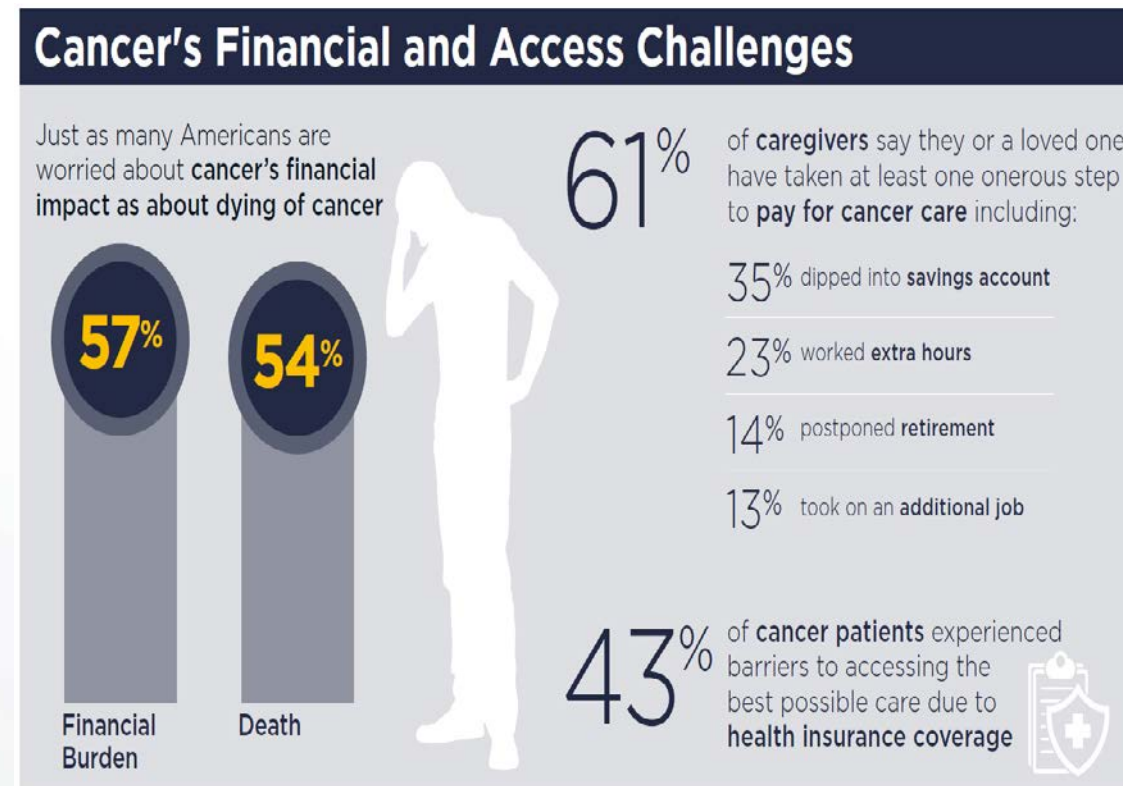
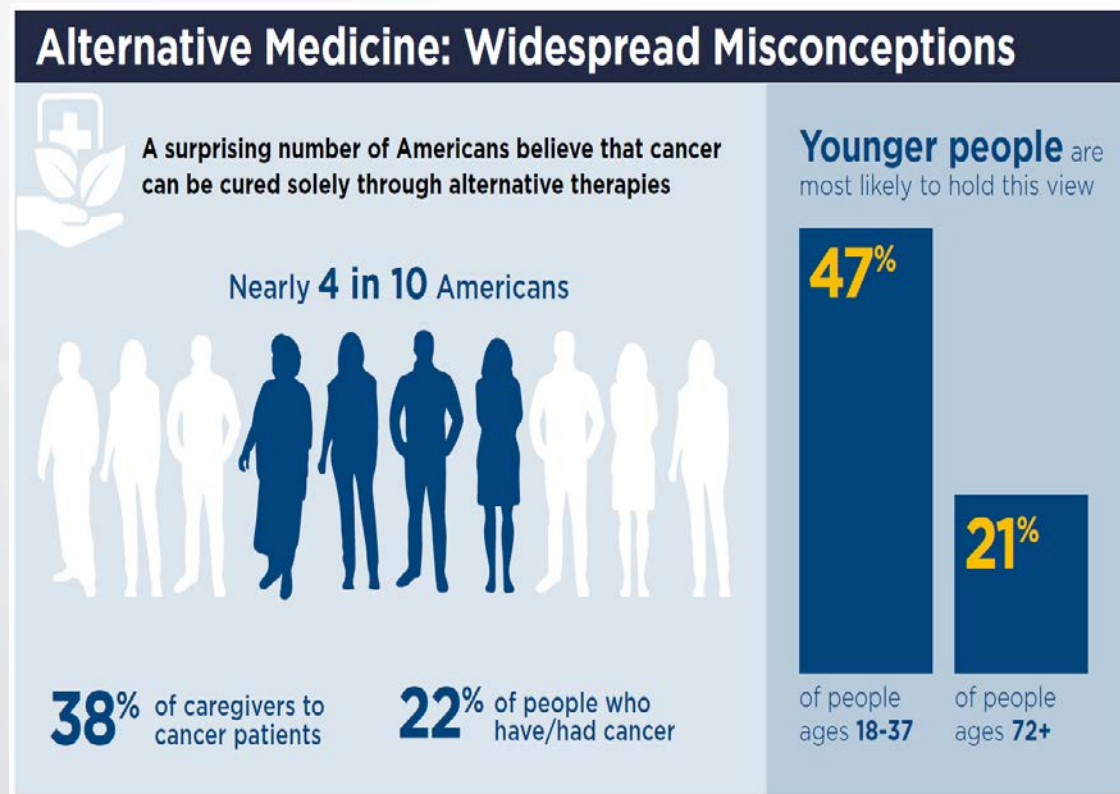


NCI-ASCO: Teams in Cancer Care Delivery

- Clinical Teams: “two or more people who interact dynamically, interdependently, and adaptively to achieve a common goal shared within the context of some larger group or organization”
- Oncology Challenge – Teams of Teams
- Do patient and caregivers want to be part of team?
 - Not IF, but HOW & they are MVP
- Project Elements:
 - NCI Systematic Review of Literature on Team Science (Taplin SH, et al. *JOP* 2015)
 - 19 Writing Teams – Patients, Clinicians, Team Scientists
 - Presentations at NCI-ASCO Workshop (02.2016)
 - Special Series of *JOP* (11.2016)

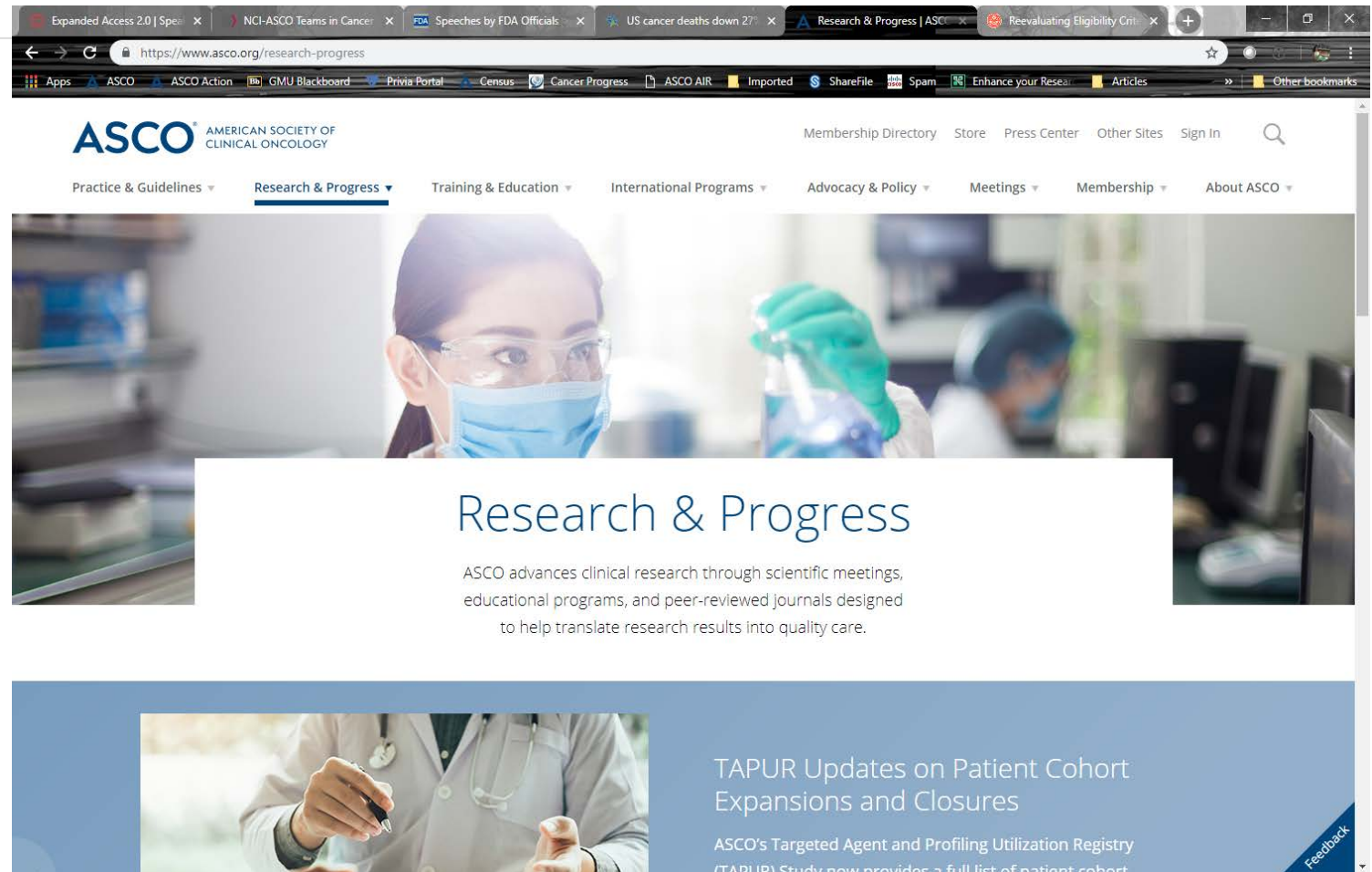


Potential Consequences if Patient/Careforce NOT *Feeling Like* a Part of Team



Platinum Rule – How does the patient/careforce want to be included.

Thanks!



The screenshot shows a web browser with multiple tabs open, including "Expanded Access 2.0 | Spe...", "NCI-ASCO Teams in Cancer", "FDA Speeches by FDA Officials", "US cancer deaths down 27%", "Research & Progress | ASCO", and "Reevaluating Eligibility Cri...". The address bar shows the URL "https://www.asco.org/research-progress". The website header features the ASCO logo (AMERICAN SOCIETY OF CLINICAL ONCOLOGY) and navigation links: "Membership Directory", "Store", "Press Center", "Other Sites", and "Sign In". A secondary navigation bar includes "Practice & Guidelines", "Research & Progress" (highlighted), "Training & Education", "International Programs", "Advocacy & Policy", "Meetings", "Membership", and "About ASCO". The main content area has a background image of a scientist in a lab coat and safety glasses. The heading "Research & Progress" is displayed, followed by the text: "ASCO advances clinical research through scientific meetings, educational programs, and peer-reviewed journals designed to help translate research results into quality care." Below this, there is a section titled "TAPUR Updates on Patient Cohort Expansions and Closures" with a subtext: "ASCO's Targeted Agent and Profiling Utilization Registry (TAPUR) Study now provides a full list of patient cohort". A "Feedback" button is visible in the bottom right corner.

Appendix Slides

Background

- ASCO uses the CMS Medicare Physician Compare research file to quantify and characterize the U.S. oncology workforce, publishing annual findings in the Workforce Information System on [asco.org](https://www.asco.org)
 - Physician Compare includes demographic information on all providers who billed Medicare within the prior 12 months
 - Because the majority of new cancers are diagnosed in the Medicare-aged population, it is a good source for identifying oncologists providing care to adult patients across all states
- In 2018, ASCO published a first-time analysis of oncology practices using practice-level data from Physician Compare doi.org/10.1200/JOP.18.00149

Physician Compare: Data Limitations

- Captures information on providers and practices billing Medicare—and therefore excludes pediatric specialties, VA, pharmaceutical companies, etc
- Administrative database populated by providers/practices for billing
 - E.g., MD Anderson uses one organization entity for all 1,700 providers, whereas Memorial Sloan Kettering uses ~10 entities. Where we can identify multiple entities per organization, we consolidate them to one
- Providers can bill using multiple practices (10% of oncologists use >1)
- Many possible definitions of oncology practice
 - Practice with a hematologist/oncologist as primary specialty vs. practice with a physician having any oncology specialty listed as primary or secondary specialty

Patient Care: Time and Activities

- Majority of time on direct patient care (NP-85% and PA-80%)
- Most Common Activities: Patient Counseling, Prescribing, Treatment Management, Follow-up Care
 - PA more likely to 1) evaluate new patients, 2) perform procedures, 3) round inpatient, 4) assist in surgery
 - No experience-related difference in types, but less experienced spend greater time in patient care

