

# A Collaborative Effort in Outbreak Preparedness: FDA's Approach to African Swine Fever

Kate Huebner, VMD, MS  
Danielle M. Sholly, PhD, MS  
FDA ASF Work Group



Systematizing the One Health Approach in Preparedness and Response Efforts for Infectious  
Disease Outbreaks: A Virtual Workshop.

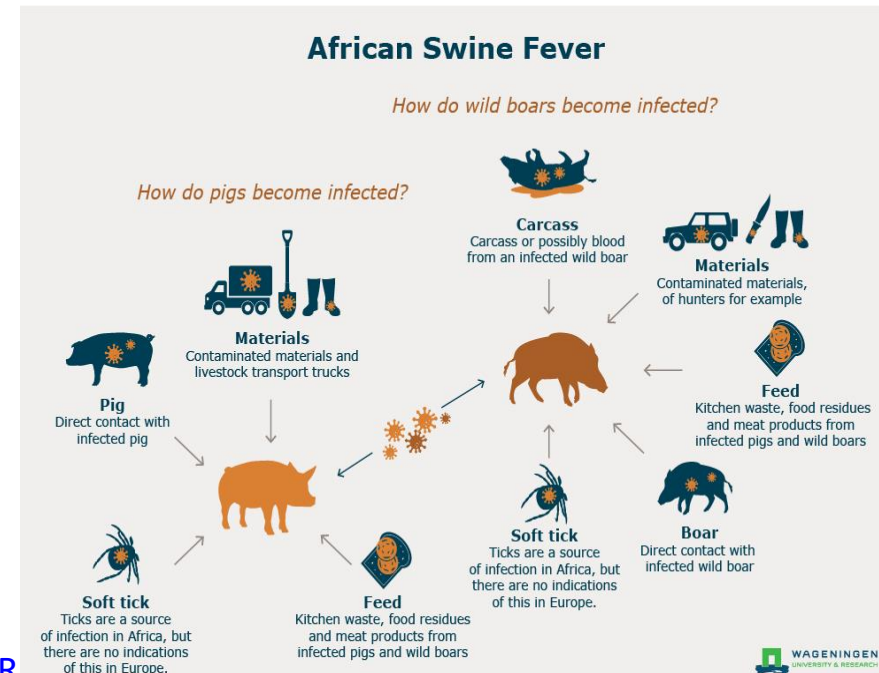
NASEM Health and Medicine, February 25, 2021

# Outline

- African Swine Fever (ASF) - Background
- Global Implications: A One Health Context
  - USDA and FDA Roles
- FDA ASF Work Group
- Collaborative Response Framework
  - One Health Approach for Disease Preparedness
- Conclusions

# African Swine Fever

- ASF is a highly contagious and deadly viral disease affecting domestic and wild pigs
- Foreign animal disease influenced by human, animal, and environmental factors
- No available vaccine or treatment



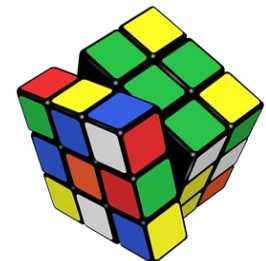
# Global Implications of ASF: A One Health Context

- ASF has caused significant pig losses globally
- Major threat to animal health, economic trade, and global food security
  - Impact on animal depopulation and disposal
  - Impact on available animal protein entering the human food supply
  - Impact to downstream ingredients for human pharmaceuticals, feed, and rendered products

# USDA and FDA Roles

USDA	FDA
Foreign Animal Disease Prevention and Surveillance	Role if: <ul style="list-style-type: none"> <li>• Can be spread through feed</li> <li>• Review/approval of mitigant (food or drug)</li> </ul>
Food Products <ul style="list-style-type: none"> <li>• Meat</li> <li>• Poultry</li> <li>• Processed Eggs</li> <li>• Import Controls</li> </ul>	Food Products <ul style="list-style-type: none"> <li>• Raw material (e.g. meat, poultry, grain intended for animal food)</li> <li>• Ingredients (e.g. meat/poultry by-products, processed ingredients, vit/min)</li> <li>• Finished product (e.g. complete swine food, pet food)</li> </ul>
Swine Health Protection Act	FSMA PCAF regulation – for non-farm facilities

- Formation of the FDA ASF Work Group



# FDA ASF Work Group

## General Activity Overview

### Communication/Collaboration

- USDA
- State
- Animal Food Industry
- Feed Risk Task Force



### Biosecurity

- Field Bulletin #66: Awareness of African Swine Fever (ASF) and the Application of Appropriate Biosecurity Measures to ensure efforts against the spread of the disease into the U.S.

### Reviewing and approving ASF mitigants

### FDA's ASF Draft Response Plan

# FDA ASF Draft Response Plan

## Overview

### Objectives

- Identify critical activities to detect, respond to, contain, and prevent further spread of ASF in animal food
- Facilitate swift normalization of and distribution of animal food

### Addresses

- FDA authorities, roles, and resources needed to respond to ASF outbreak

Developed using Incident Command Principles



# FDA ASF Draft Response Plan

## Key Strategies

- Providing clean animal food thus protecting animal health; multiple mitigation strategies to combat viral spread
- Biosecurity measures and critical activities for FDA Investigator Inspection on affected farm or feed mill
- Conducting trace forward and trace back investigations on contaminated animal food or ingredients





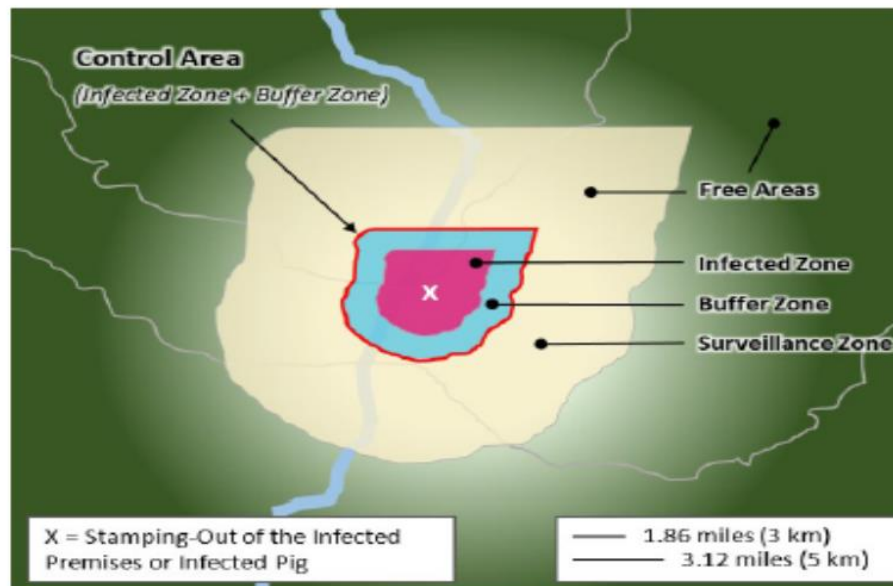
# FDA ASF Work Group

## Public Outreach

- Center for Veterinary Medicine's ASF Webpage
  - <https://www.fda.gov/animal-veterinary/safety-health/african-swine-fever>
  - High level overview of ASF
  - CVM's response to this re-emerging foreign animal disease
  - Resource links
    - United States Department of Agriculture (USDA) Animal and Plant Health Inspection Service (APHIS) ASF webpage
    - CVM's Food Additive Petitions of Animal Food
    - FDA Regulation of Animal Drugs

# Collaborative Response Framework: One Health Approach for Disease Preparedness

*Figure 3-1. Example of Zones and Areas in Relation to Stamping-Out*



***Prevention and Control is key.***

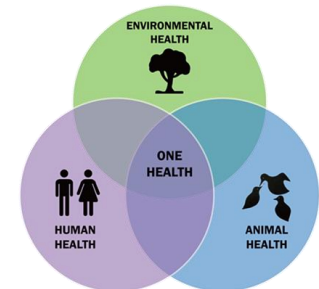
# Collaborative Response Framework: One Health Approach for Disease Preparedness


- Table top exercises
  - Federal, State, Local regulators
  - Veterinarians
  - Swine industry, Feed mill operators, Animal processors
- Reach across Federal and State Agencies
- Continued collaboration among various stakeholders, regulatory agencies, etc.



# Conclusions

- FDA's role in disease outbreak preparedness and draft response plan to ASF is a good example of utilizing a One Health Approach
  - Why & How to consider a One Health Approach
  - Identifying anticipated challenges specific to the disease threat
  - Enhancing Collaboration/Coordination
  - Gaining wisdom from past and present human and animal disease outbreaks





**“In preparing for battle I have always  
found that plans are useless, but  
planning is indispensable.”**

**— Dwight D. Eisenhower**

# Acknowledgements

FDA ASF Work Group Members		
Linda Benjamin	Kate Huebner	Danielle Sholly
Srinivasulu Chigurupati	Danial Hutchison	Ashley Steel
Kate Collins	Shannon Jordre	Amanda Willey
Mick Dutcher	Holli Kubicki	Julianna Witting
Derek Estes	Danna Lewis	Haile Yancy
Beilei Ge	Donte Morris	Chris Yee
Mark Glover	Jenny Murphy	
Ellen Hart	Mike Myers	
Joe Haynes	Phares Okelo	

thank you!



Questions:  
[AskCVM@fda.hhs.gov](mailto:AskCVM@fda.hhs.gov)