

# Pathways to addressing evidence gaps: funder's perspective

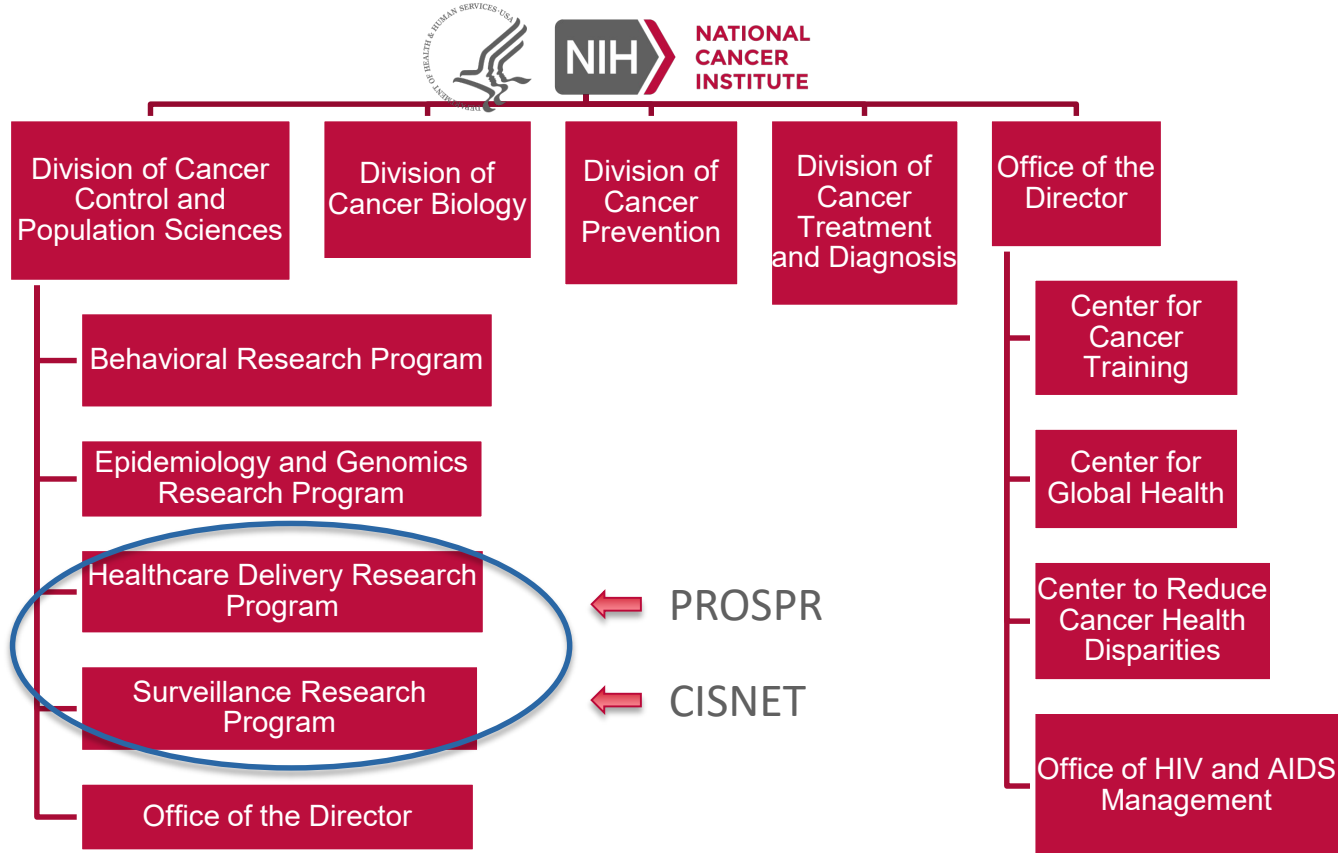
V. Paul Doria-Rose, DVM, PhD

NASEM Committee on Addressing Evidence Gaps in Clinical Prevention

# Funding Opportunity Announcement (FOA) mechanisms: tools in the box

- RFA
  - PA
  - NOSI
- 
- In addition, investigator-initiated applications are encouraged!

# Extramural Divisions at NCI



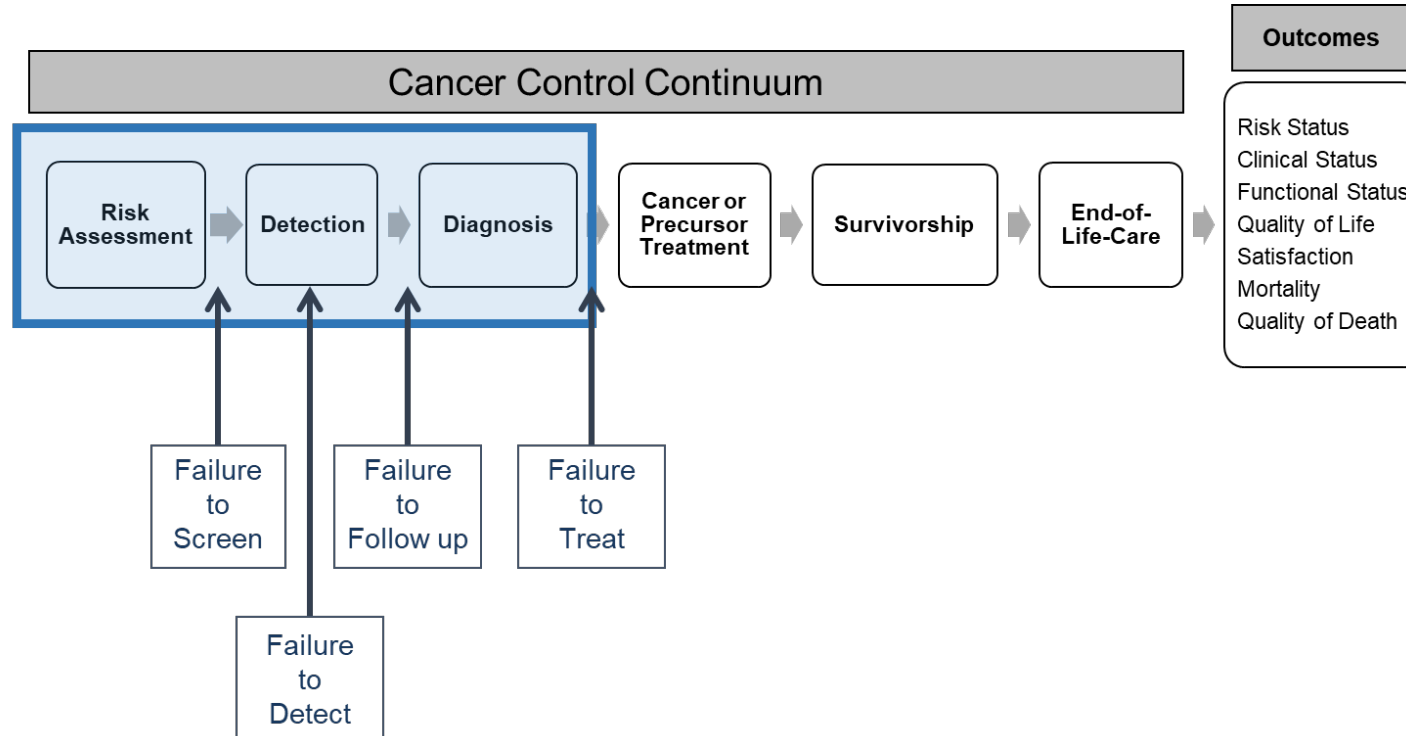
# Cancer Intervention and Surveillance Modeling Network (CISNET)

- NCI Sponsored Collaborative Consortium (U01) of Modelers in Breast, Prostate, Colorectal, Lung, and Cervical cancers formed in 2000
- Use surveillance data and simulation modeling to guide public health research and priorities
  - Help address the formidable and growing gap between the rapid pace of innovation in cancer research and our ability to efficiently harness it to improve population health
- Comparative modeling: multiple-PI grants each focused on a different cancer site with a coordinating center and between 3-6 modeling groups



Slide adapted from E. Feuer

# Population-based Research to Optimize the Screening Process (PROSPR)



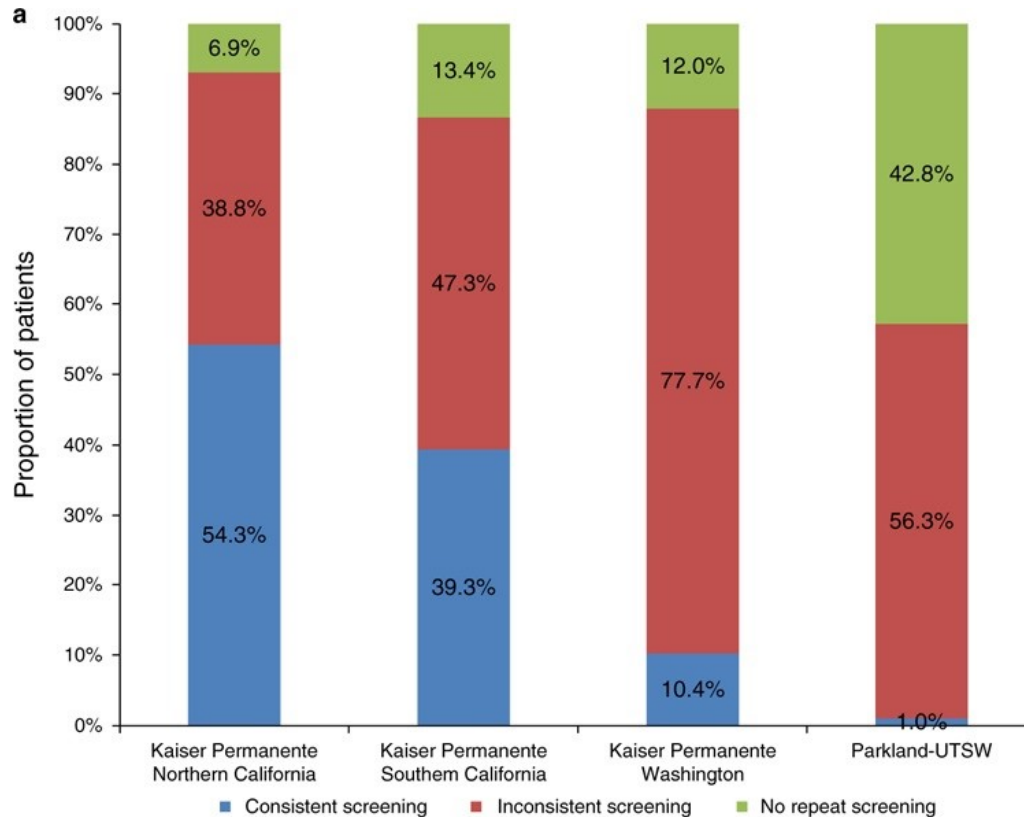
## Emphases for PROSPR II

- Cervical, colorectal and lung cancer screening in 10 different healthcare systems across the US
- Focus on underserved patient populations: e.g., racial/ethnic minorities, lower socioeconomic status
- Trans-PROSPR research to develop common conceptualizations and measures for assessing
  - Systems-level factors
  - Screening quality
- Development and pilot-testing of interventions to improve the screening process

# DCCPS initiatives addressing USPSTF-identified research gaps

Research needs and gaps	PROSPR	CISNET
RCTs: effectiveness of different CRC screening strategies	X	X
Effectiveness/accuracy of screening tests in Black adults	✓	✓
Risk factors: increased CRC incidence/mortality in Black adults	✓	✓
Effectiveness of sDNA-FIT, outcomes after FP sDNA-FIT	X	✓
Effectiveness of CT colonography, consequences of extracolonic findings	X	✓
CRC screening uptake/adherence and impact on benefits	✓	✓
Accuracy and effectiveness of emerging screening technologies	X	✓

# PROSPR Example: Adherence to Repeat FIT



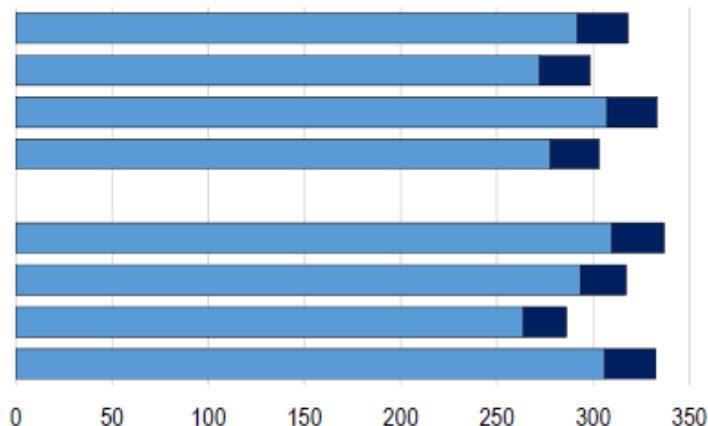


# CISNET Example: Comparative Effectiveness

[A] Benefit: Life-years gained per 1000 individuals screened\*

Screening Method and Frequency	Model Average <sup>†</sup> per 1000 Screened	
	Life-Years Gained if Start Screening at Age 50	Additional Life-Years Gained if Start Screening at Age 45
Stool tests		
FIT every year	292	+26
HSgFOBT every year <sup>‡§</sup>	272	+26
sDNA-FIT every year	307	+26
sDNA-FIT every 3 y <sup>§</sup>	278	+25
Direct visualization tests		
Colonoscopy every 10 y	310	+27
CT colonography every 5 y	293	+24
Flexible SIG every 5 y	264	+22
Flexible SIG every 10 y plus FIT every year	306	+26

Life-Years Gained per 1000 Screened, by Age to Begin Screening  
 ■ Age 50 ■ Age 45



Healthcare Delivery Research Program | healthcaredelivery.cancer.gov

**COVID-19 is an emerging, rapidly evolving situation.**

What people with cancer should know: <https://www.cancer.gov/coronavirus>

Guidance for cancer researchers: <https://www.cancer.gov/coronavirus-researchers>

Get the latest public health information from CDC: <https://www.coronavirus.gov>

Get the latest research information from NIH: <https://www.covid19.nih.gov/>

**Healthcare Delivery Research Program**

Home Funding Data & Tools Research Networks Areas of Interest News & Events About

Health care delivery research is conceptualized as the study of cancer care, factors influencing care, and outcomes of care.



**Funding Opportunity Announcements (FOAs)**

Apply to currently open FOAs sponsored or so-sponsored by HDRPP, other FOAs relevant to HDRP, and NIH and NCI Parent and Omnibus FOAs for investigator-initiated research

**Data and Tools for Research**

Explore HDRP-supported research resources used to address questions across the cancer control continuum

**Upcoming Events**

Browse upcoming webinars that highlight current funding opportunities or hot topics in healthcare delivery research



## Other Current HDRP Prevention-Related Funding Announcements

Announcement Title (Mechanism)	Announcement # (Exp. date)	Program Contact
Increasing Uptake of Evidence-Based Screening in Diverse Adult Populations (R01)	<a href="#">PA-18-932</a> 1/28/2022	Erica Breslau <a href="mailto:breslaue@mail.nih.gov">breslaue@mail.nih.gov</a>
Notice of Special Interest: De-implementation of Ineffective or Low-value Clinical Practices along the Cancer Care Continuum (R01)	<a href="#">NOT-CA-20-021</a> (5/10/2022)	Erica S. Breslau <a href="mailto:breslaue@mail.nih.gov">breslaue@mail.nih.gov</a>
Linking the Provider Recommendation to Adolescent HPV Vaccine Uptake (R01)*	<a href="#">PAR-19-360</a> (9/8/2022)	Veronica Chollette <a href="mailto:cholletv@mail.nih.gov">cholletv@mail.nih.gov</a>
Accelerating colorectal cancer screening and follow-up through implementation science (ACCSIS)	<a href="#">RFA-CA-19-018</a> (N/A)	Sarah Kobrin <a href="mailto:kobrins@mail.nih.gov">kobrins@mail.nih.gov</a>

Thank You!

Paul Doria-Rose  
doriarop@mail.nih.gov