

## RHA / Health Impact Matrix

Religious Health Assets

Intangible

Tangible

- ☐ Healthworld
- ☐ Advocacy/mobilization
- ☐ Resistance - Physical/Mental/Structural/Political
- ☐ Motivation
- ☐ Commitment/Sense of Duty
- ☐ Compassion
- ☐ Prayer
- ☐ Resilience
- ☐ Accompaniment
- ☐ Relationship (Caregiver & "Patient")

- ☐ Agency (capabilities & capacities)
- ☐ Skills
- ☐ Access to Power
- ☐ Credibility/local reach
- ☐ Trust/Distrust
- ☐ Sense of Meaning/Coherence
- ☐ Belonging
- ☐ Connection/Ties
- ☐ Transgenerational approval
- ☐ Emplotment (Story)

- ☐ Hospitals - Beds, etc
- ☐ Clinics
- ☐ Dispensaries
- ☐ Hospices
- ☐ Hospital Chaplains
- ☐ Health professionals
- ☐ Traditional Healers/midwives
- ☐ Faith Healers
- ☐ Care Groups
- ☐ NGO/FBO/CBO activities
- ☐ Training - Para-Medical
- ☐ Funding

- ☐ Networks/Ties
- ☐ Leaders/Facilitators/Navigators
- ☐ Education & Information
- ☐ Sacred Spaces/sanctuary)
- ☐ Sacraments/Rituals
- ☐ Rites Of Passage
- ☐ Funerals
- ☐ Manyano and other fellowships
- ☐ Choirs
- ☐ Presence on the margins & among the poor

Proximal

Distal

Continuum

Focus on Health

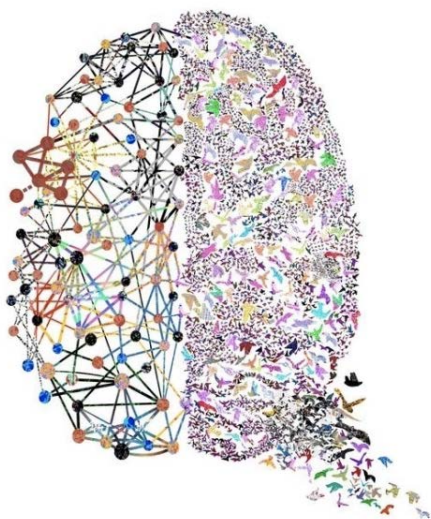


**Arhap**

African Religious Health Assets Programme

# Typology of Assets Developed for WHO

- Prevention
- Treatment
- Care and Support
- Linking



**Arhap**

African Religious Health Assets Programme

TYPE	CODE	DEFINITION	INCLUSION CRITERIA or EXAMPLES
<b>Prevention</b>	<b>[p]</b>	Activities which aim to stop or slow spread of HIV in a population	
HIV/AIDS education / life skills development	<b>p1</b>	(standard)	Awareness, Empowerment, Reduction of stigma/self stigma
VCT	<b>p2</b>	Voluntary counselling before and after HIV testing as well as diagnostic HIV/AIDS testing	Counseling & testing for diagnostic purposes should be included -- <b>if both</b> are carried out at that facility.
PMTCT	<b>p3</b>	HIV/AIDS counseling & testing to pregnant women plus any ARV drugs to prevent mother to child transmission	
Behaviour change	<b>p4</b>	(see standard)	Abstinence, fidelity, condom use; partner reduction; needle exchange; use; limiting workplace exposure
Advocacy	<b>p5</b>	(see standard)	Policy development; legislative action; resource allocation
<b>Treatment</b>	<b>[t]</b>	Bio-medical interventions for PLWHAs	
ARV therapy / ramp up	<b>t1</b>	HIV/AIDS treatment can be initiated, drugs prescribed, patients monitored.	
Treatment of STIs and opportunistic infections	<b>t2</b>	(standard)	
Laboratory monitoring	<b>t3</b>	(standard)	Facility to determine CD4 count, viral load
Compliance monitoring	<b>t4</b>	(standard)	
Phyto-therapy	<b>t5</b>	(standard)	Herbal remedies from traditional practitioner
<b>Care and support</b>	<b>[c]</b>	Non-medical interventions in support of PLWHAs	
HBC	<b>c1</b>	Groups providing home based care	
Palliative care	<b>c2</b>	(standard)	Hospice
OVC / widows	<b>c3</b>	Care and support for orphans and vulnerable children as well as widows	
PWLA specific	<b>c4</b>	PLWH/As meeting for mutual support	Story-telling, sharing health strategies
Treatment support	<b>c5</b>	(standard)	Compliance support, collecting ARV drugs, noting side-effects, etc.
Material support	<b>c6</b>	(standard)	Food, Transport
Spiritual support	<b>c7</b>	<i>Intangible dimensions of human agency, coherence, hope</i>	Pastoral care, theological response; traditional healing
<b>Linking</b>	<b>[l]</b>	Non-medical interventions supporting work in prevention, treatment, & care	
Coordination role	<b>l1</b>	Helping an RE convene, vision, plan	(see WHO study)
Financial / Funding	<b>l2</b>	Helping raise funds, control finances	(see WHO study)
Incubation & consolidation	<b>l3</b>	Helping build or stabilize an RE	(see WHO study)
Mobilization	<b>l4</b>	Assisting in connections to others	(see WHO study)
Technical Assistance	<b>l5</b>	Acting as a resource and advice centre	(see WHO study)