

Physical, Cognitive, and Psychosocial Function After Organ Transplantation

Eyal Shemesh, M.D.

Chief, Division of Developmental and Behavioral Pediatrics

Professor of Pediatrics and Psychiatry

The Department of Pediatrics, Icahn School of Medicine at Mount Sinai, and Kravis Children's Hospital, New York



**Mount
Sinai**

Disclosure – outside relationships in the last 3 years

Agency	Role	Comment
National Institutes of Health: NIDDK / NIMH / NICHD / NINR / NCRR	PI, Co-I	Research support: R-01, U34, U01
Jaffe Family Foundation, Pine/Segal Families, Vanech Family Foundation	Program Director	Program support: EMPOWER program
PARTNERS program	Advisory Board	Volunteer.
Y.H. Mirzoeff and Sons Foundation, Inc.	Advisory Board	Volunteer.
Graham-Windham Child Care Agency	Board	Volunteer
First Workings	Board	Volunteer

Children are not just “small adults”



**Mount
Sinai**

Organ transplantation in pediatrics

A life-saving transition from deadly risk to chronic illness

A lifelong commitment to immunosuppression management

The decision to do the transplant is typically done by the parent, but the child has to live with the consequences.



**Mount
Sinai**

Consequences

Most likely consequence: productive, long life.

BUT – things might get complicated, and in pediatrics, there is a very long timeframe.

Cognitive impairment is an important concern.

A few psychosocial / demographic challenges were the top predictors of risk in our research over the years, especially in the MALT cohort.

Top predictors of post-transplant risk in the post-transplant group

- The following are predictors, they are not necessarily CAUSAL.
- Risk is examined from 1 year after transplant onwards, so the following does not include surgical risk / complications.
- History of child abuse.
- Single parent household.
- Zip Code
- Race (black)
- Gender (female) – somewhat.

Monitor for

Adherence to medical recommendations

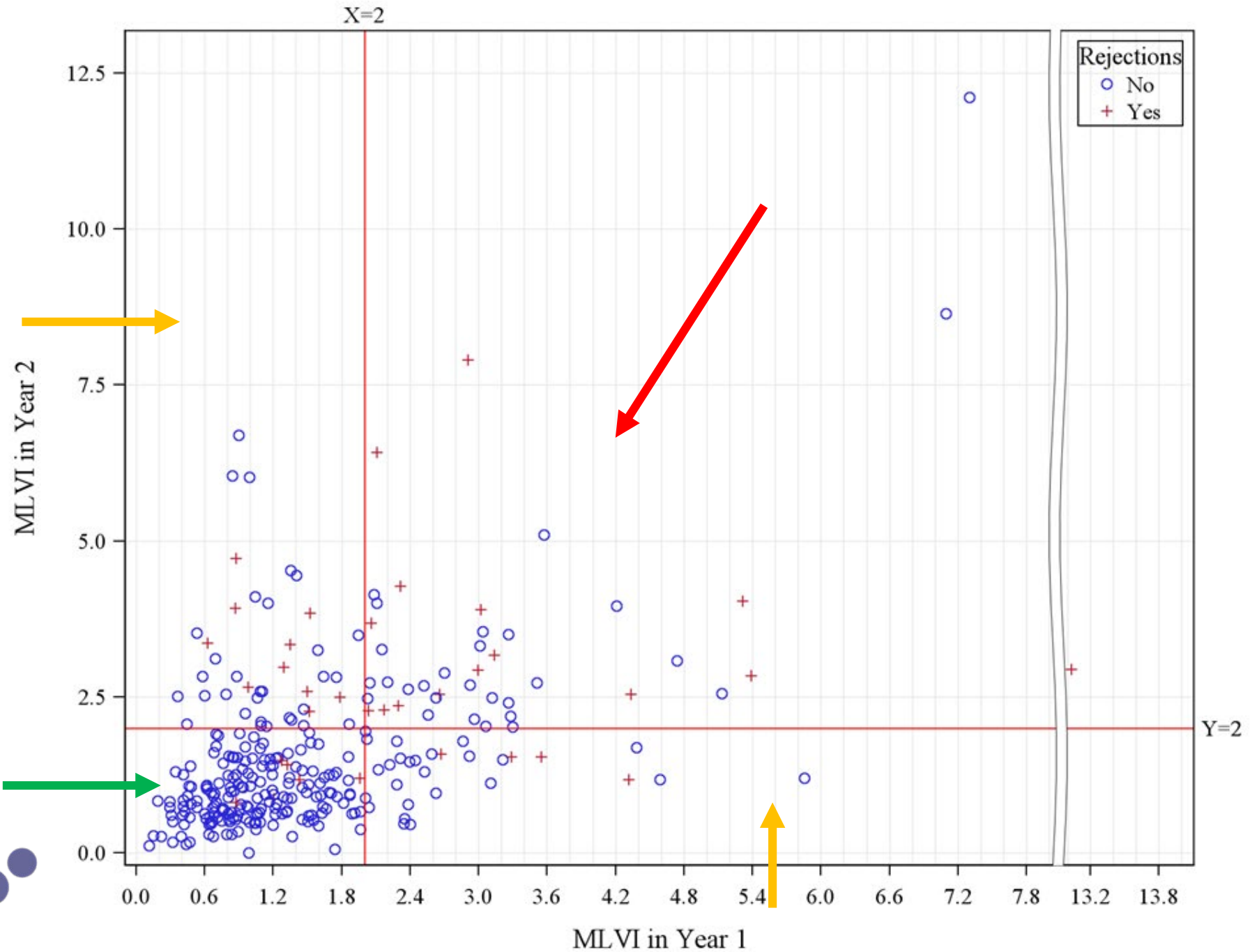
General functioning (eg school)

Emergent risk



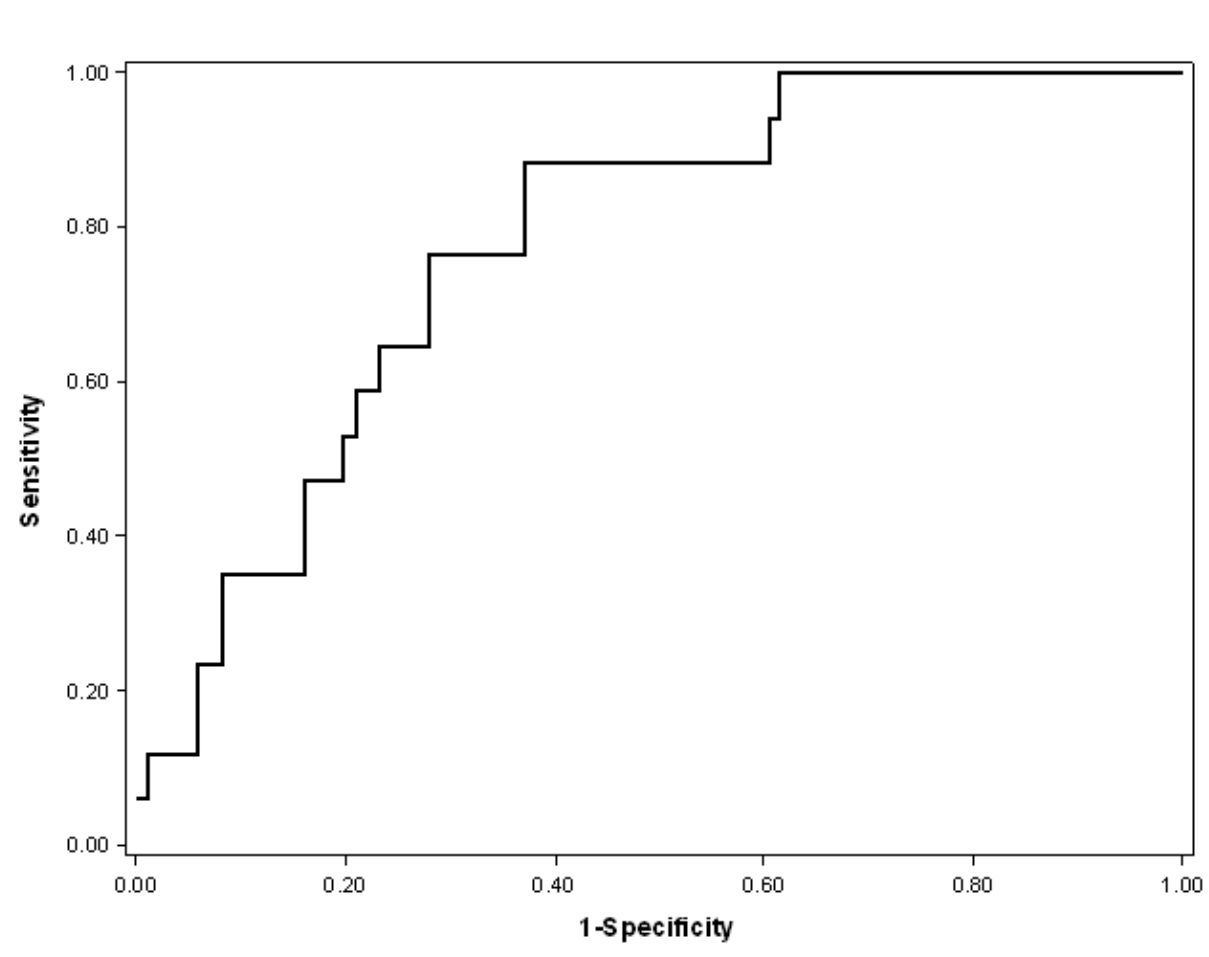
**Mount
Sinai**

MALT results



MALT results

- AUC in entire MALT cohort = 0.61
- AUC in adolescents = 0.78
- **53% of adolescents with $MLVI \geq 2$ in year 1 had a rejection within the MALT 2 year period, as compared with only 6% of those with $MLVI < 2$.**



What to do to mitigate risk

- Recognize the presence of risk – before or after transplant.
 - Repeated evaluations.
 - Risk peaks at adolescence
- Address risk pro-actively if possible. Do not forget the parents!
- Allocate resources for additional support FOR THOSE WHO NEED IT.
- Mental health issues that we need to be specifically mindful of: PTSD, depression.

What to expect for in terms of functioning

A life-long of risk, potential reduction in life expectancy, with generally good functioning while alive for most recipients [Excluding heart-lung and bowel transplants, and excluding other cutting edge transplants (such as: hand transplants).]



Biennale Arte 2019

The title of this Exhibition could be interpreted as a sort of curse – stated President Paolo Baratta - where the expression “interesting times” evokes the idea of challenging or even “menacing” times, but it could also simply be an invitation to always see and consider the course of human events in their complexity, an invitation, thus, that appears to be particularly important in times when, too often, oversimplification seems to prevail



**Mount
Sinai**

Thank you



**Mount
Sinai**