

# Improving Access to and Equity of Care for People with Serious Illness



## A View from the Safety Net: San Francisco Health Network

---

Alice Hm Chen, MD, MPH

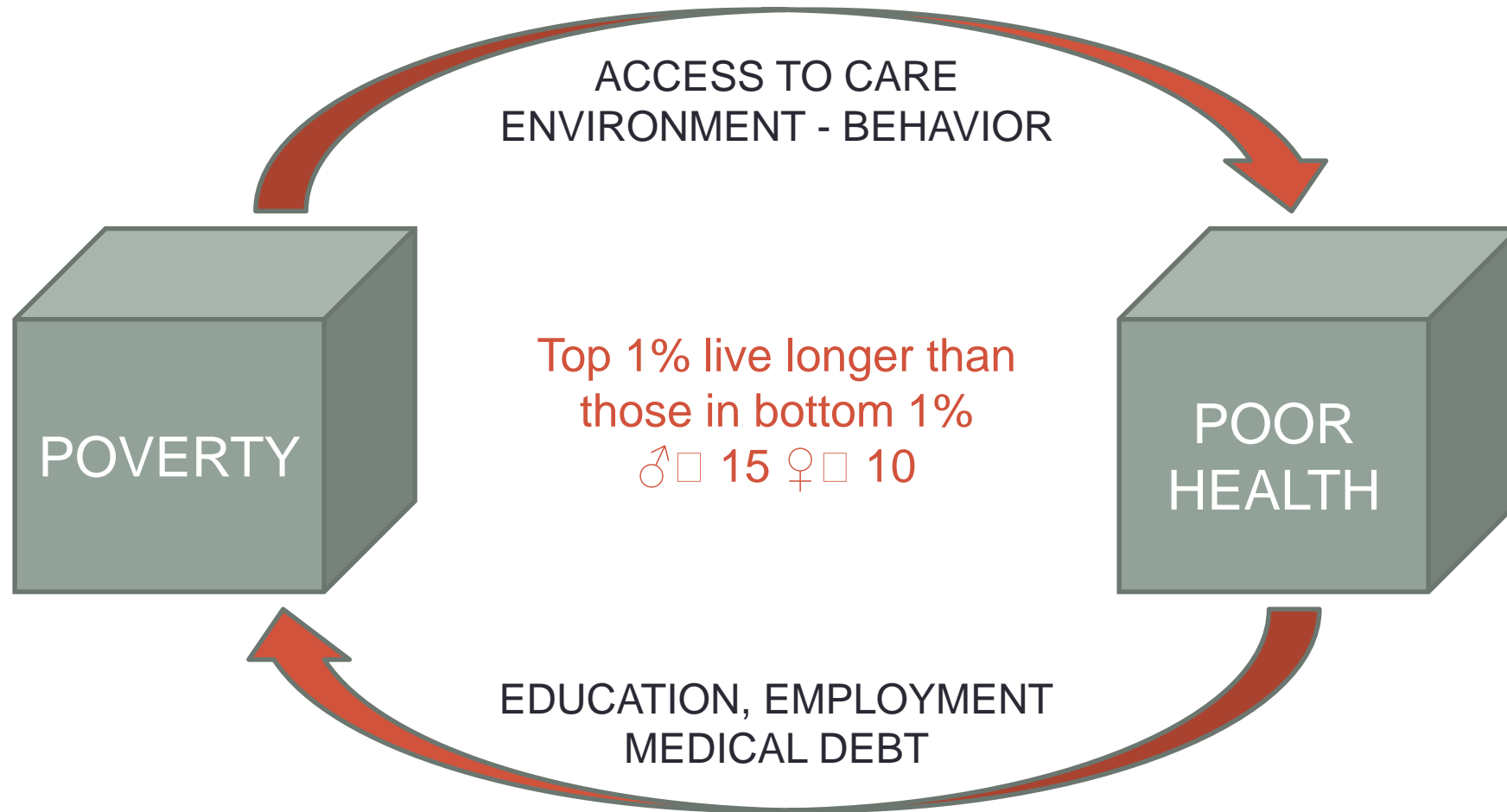
Deputy Director and Chief Medical Officer, SFHN

Professor of Medicine, UCSF

# Key Points

- Relationship of health and poverty
- Role of safety net
- Vulnerabilities impacting care
- Promising interventions

# Health Poverty Trap

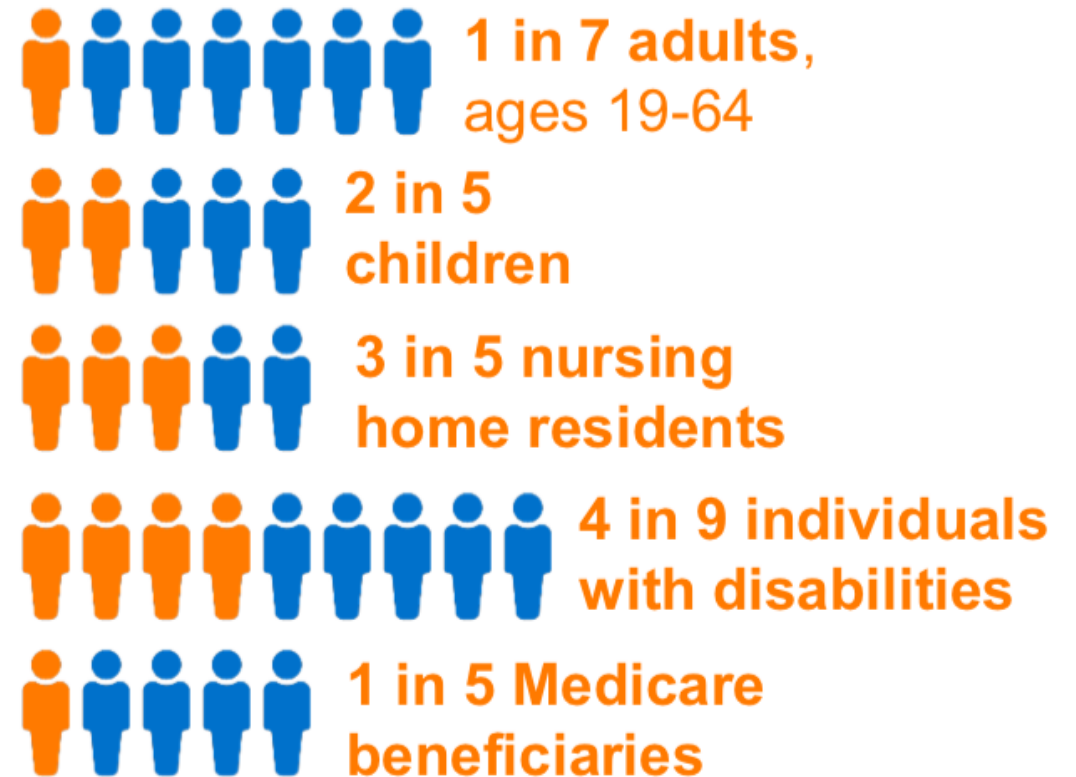


# Safety Net Role

## INSTITUTE OF MEDICINE

“Those providers that organize and deliver a significant level of health care and other health-related services to **uninsured, Medicaid,** and other vulnerable patients.”

## In US, Medicaid Covers:



Kaiser Family Foundation, Medicaid in the United States. November 2018

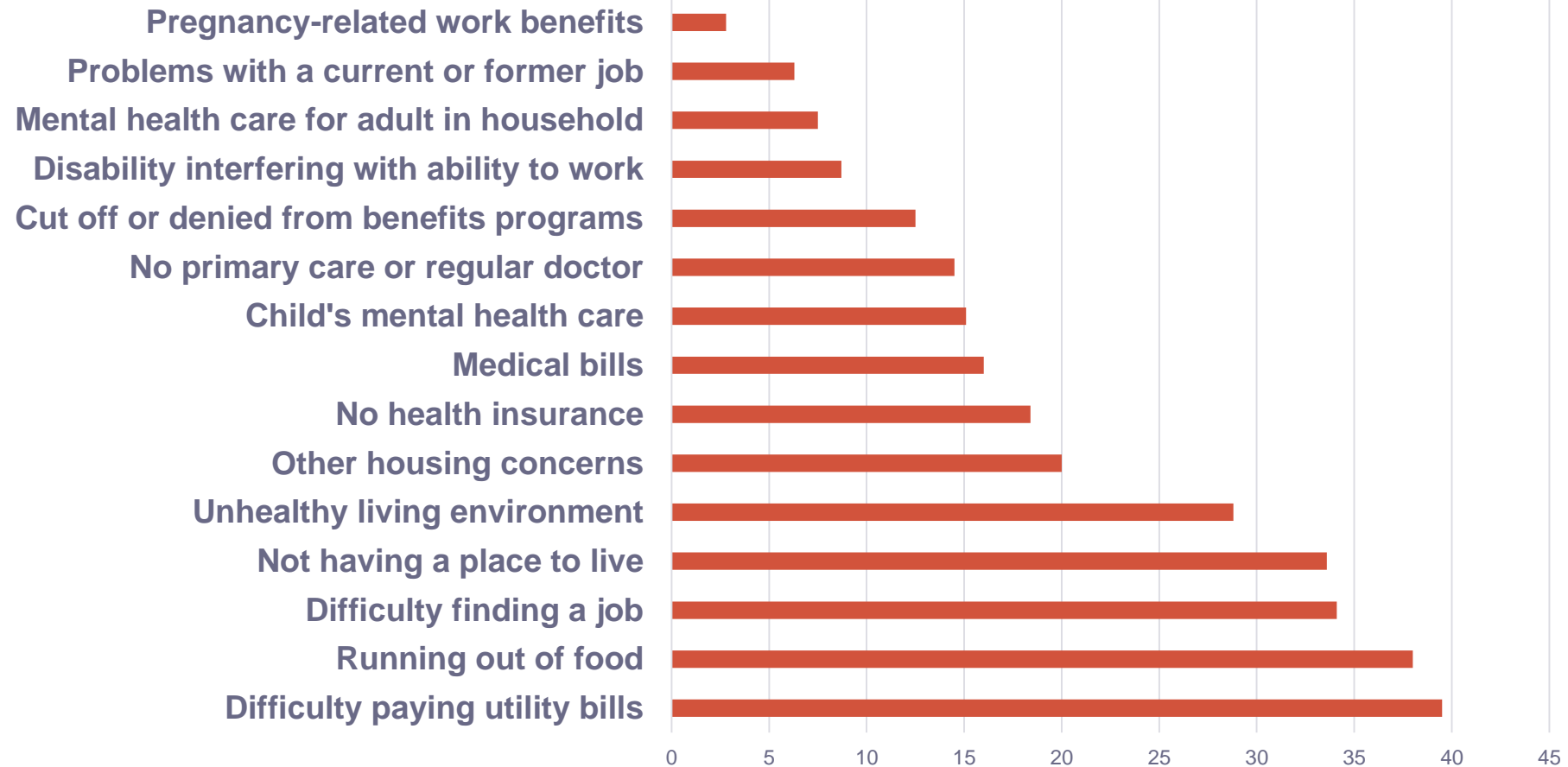
# Multiplicity of Vulnerabilities



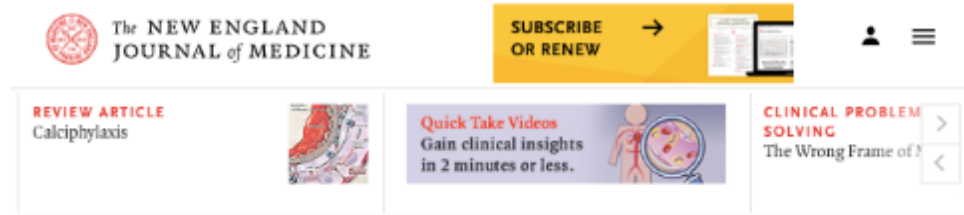
# Multiplicity of Needs

LEP  
LFHL  
food  
insecurity  
HOUSING  
Insurance

## FREQUENCY OF NEED



# Universal Access to Care



## Perspective Golden Gate to Health Care for All? San Francisco's New Universal-Access Program

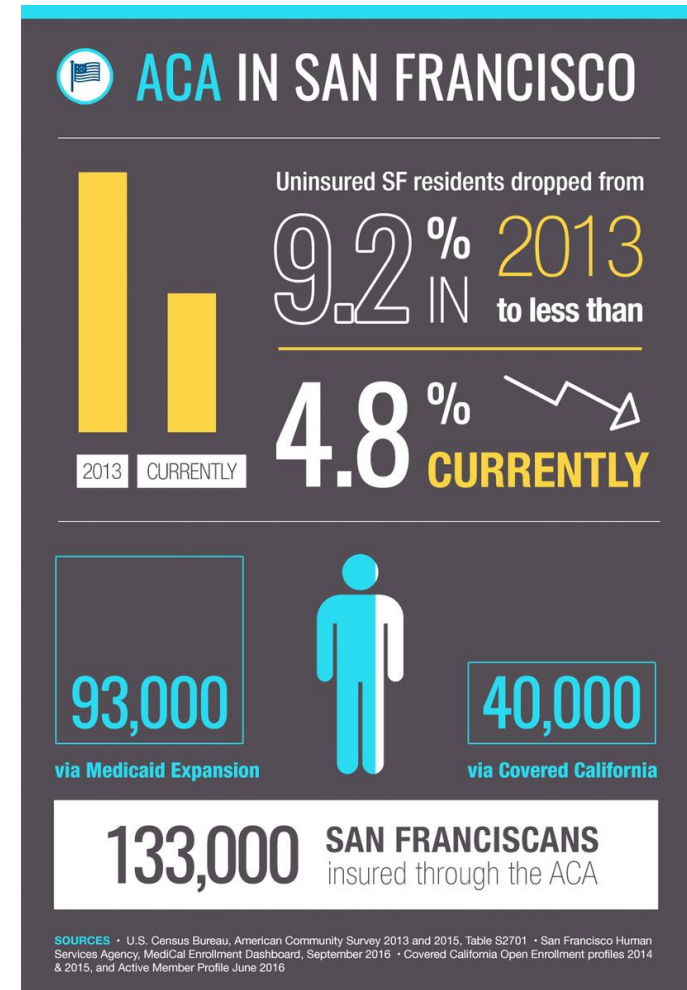
Mitchell H. Katz, M.D.

January 24, 2008  
N Engl J Med 2008; 358:327-329  
DOI: 10.1056/NEJMp0706590

Article   Figures/Media

4 References   4 Citing Articles

IMPATIENT WITH THE LACK OF PROGRESS in reducing the number of uninsured Americans, San Francisco is seeking their own solutions to the health care access problem. To achieve universal coverage often encounter substantial barriers.





# Screening and Connection for Social Needs

**Liz Test**  
Female, 36 y.o., 12/20/1982  
MRN: 200000719  
Code: Assume Full (no ACP docs)

Physician Lean, MD  
PCP  
Coverage: None  
Allergies: Not on File

**SOCIAL DETERMINANTS**

3/27 FOLLOW UP APPOINTMENT  
No vital signs recorded for this encounter.  
Needs SOP Order  
Pap Smear  
Behavioral Health Vital Signs...

SINCE LAST PRIMARY CARE VISIT  
No other visits  
No results

**PROBLEM LIST (0)**

**Screenings**  
Travel Screening Tobacco Screening BHVS PHO-2 (9) BHVS Substance Use BHVS IPV  
Social Determinant of Health Gender Identity/Sexuality Opioid Risk

**Housing Status - Housing Status**

What is your housing situation today?  
I have housing  
I choose not to answer this question  
Taken today: I do not have housing (staying with others, in a hotel, in a shelter, living outside on street)  
Please choose the answer below which best describes your living situation today:

**Social Determinants of Health**

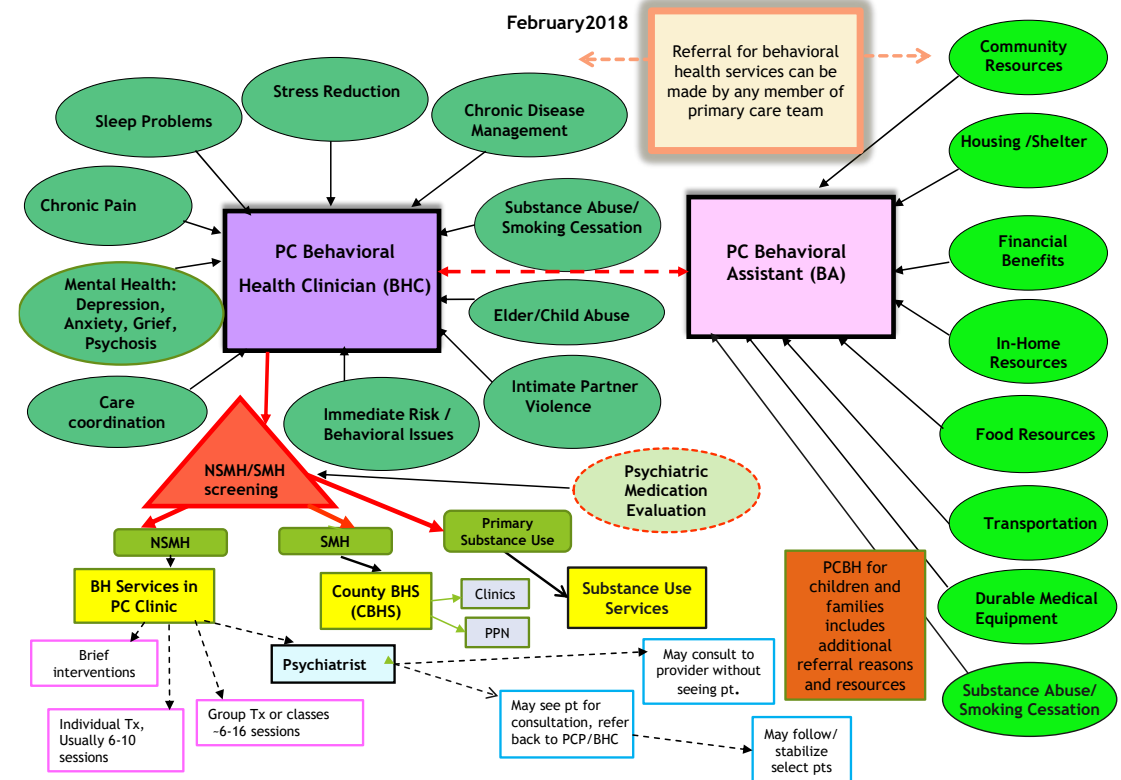
Intimate Partner Violence Not on file	Alcohol Use Not on file
Tobacco Use Unknown	Depression Not on file
Food Insecurity MAR 28 2019 Food Insecurity Present	Transportation Needs Not on file
Utilities Not on file	Employment MAR 28 2019
Substance Use Not on file	Housing MAR 28 2019

Find community resources

Family history of substance abuse alcohol illegal drugs prescription drugs  
Personal history of substance abuse alcohol illegal drugs prescription drugs  
Age between 18 and 49

Start Review + ADD ORDER

## SFHN Primary Care Behavioral Health (PCBH) Services





# Addressing Food Insecurity



## *Cod and 'Immune Broth': California Tests Food as Medicine*



Emma Esquivel, a volunteer at the Ceres Community Project in Sebastopol, Calif., making mushroom burgers for cancer patients. The nonprofit group is participating in a state-funded study to test whether meals delivered to the chronically ill affect prognosis or the costs of care. Ramin Rahimian for The New York Times

By Patricia Leigh Brown

May 11, 2018

# Bridging the Digital Divide

## My SF Health

Es un sitio  
web gratuito  
y seguro

que le da acceso fácil a su  
Información de salud

De la red de hospitales y clínicas  
de san francisco health network.

[MySFHealth.org](http://MySFHealth.org)



Para apoyo técnico,  
llame a (415) 206-2200

¿Tienes preguntas?  
¿Necesitas más ayuda?

Pase por la Biblioteca ZSFG para  
obtener ayuda con computadoras  
y MYSFHEALTH.  
Llámenos al (415) 206-3114.  
Horario: Lun-Vie 8 A.M.—5 P.M.

1001 Potrero Ave Bldg 30,  
First Floor  
San Francisco, CA 94110

Para preguntas sobre su salud,  
comuníquese con su médico.

Para toda emergencia,  
llame al 911



SAN FRANCISCO DEPARTMENT OF PUBLIC HEALTH

¿Qué es  
My SF Health?

[MySFHealth.org](http://MySFHealth.org)



## ACKNOWLEDGEMENTS

Radawn Alcorn, MSW, LCSW

Ben Lui, MD, MPH

Rita Nguyen, MD

Neda Ratanawongsa, MD, MPH

Shoba Sadasivaiah, MD

