

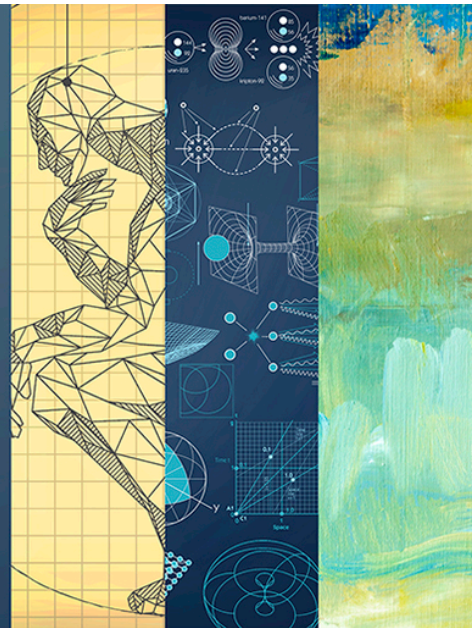
# Branches FROM THE Same Tree

A National Convening on the  
Integration of Arts, Humanities,  
and STEMM in Higher Education

Location: **National Academy of Sciences**  
(2101 Constitution Avenue NW, Washington, DC)

Date: Friday, April 12, 2019

Time: 9:00 AM – 5:00 PM



## AGENDA

The Integration of Arts, Humanities, and STEMM in Higher Education

April 12, 2019

National Academy of Sciences

2101 Constitution Avenue NW

Washington, DC

<i>Morning Plenary Session</i>	9:00 – 9:30 AM	Coffee and Registration
	9:30 AM	<b>Opening Remarks</b> <b>David Skorton, Secretary, Smithsonian</b> Chair, Committee on the Integration of Arts, Humanities with Science, Engineering, and Medicine
	10:00 – 10:45 AM	<b>Panel Discussion on the Future of Higher Education</b> <b>Moderator: David Skorton, Secretary, Smithsonian</b> <b>Panelists:</b> <b>Bonnie Thornton Dill</b> Dean, College of Arts and Humanities and Professor of Women's Studies, The University of Maryland <b>Tom Ewing</b> , Professor of History and Associate Dean, College of Liberal Arts and Human Sciences, Virginia Tech <b>Shannon Jackson</b> , Associate Vice Chancellor for the Arts + Design, Cyrus and Michelle Hadidi Professor of Rhetoric and of Theater, Dance and Performance Studies, UC Berkeley Virginia Tech

	10:45 – 11:00 AM	<p><b>Paul Shrivastava</b> , Chief Sustainability Officer of Penn State University, Director of Sustainability Institute, and Professor of Management, the Smeal College of Business, Penn State University</p> <p>Q &amp; A with Audience</p> <p><i><b>Theatrical Dialogue Set 1</b></i></p>
	11:05 – 11:55 AM	<p><b>Student Panel on Integrative Education</b></p> <p>Leigh Carrol, Community Programs Associate, Design Center Pittsburgh  Camellia Pastore, Undergraduate Student, Computer Science, Virginia Tech  Rediet Woldeselassie, Graduate Student, Health Informatics, George Mason University</p> <p><i>In this panel we dive into the student experience of integrative learning. We'll hear from students in the undergraduate and graduate level, and from recent graduates. This panel will explore the benefits and challenges of integrative learning from the student perspective. What was their exposure to topics outside of their discipline and why did they seek out these experiences? How did this impact their academic and career trajectory?</i></p>
	12:00 – 12:30 PM	<i><b>Theatrical Dialogue Set 2</b></i>
Lunch Break	12:30 – 1:30 PM	Lunch Break (West Court) and Expo/Poster Session (Great Hall)
Afternoon Sessions	1:30 – 3:00 PM	<p>Track 1: Teaching Tomorrow Today: Humanities, Arts, and STEMM in Conversation (Room 120)</p> <p>Moderator: Susan Albertine, AAC&amp;U  Soledad Caballero (English, Gender Studies) and Aimee Knupsky (Psychology), Allegheny College  Heidi Bostic, Visiting Associate Provost for Special Projects, Furman University  Paula M. Krebs, Executive Director, Modern Language Association</p> <p><i>Questions about integration, of arts, humanities, STEM, medicine together, are shaped by discipline and context. Yet the overarching question that is central to the arts and humanities—what does it mean to be human?—invites scholars of all disciplines and fields into conversation. The humanities are crucial in responding to grand challenges because underlying any of these challenges are basic questions of who we are and how we ought to live. This panel discussion will explore questions about integration</i></p>

	<p><i>and ethos from vantage points in the humanities. What does reciprocity between arts, humanities, and STEMM mean? How can an integrative and ethical framing bring the humanities within reach of vulnerable populations? How can integrative approaches to humanities programs benefit general education, benefit graduate students? How might modern language study contribute to integration? After interactive discussion of these questions, the session will invite participants to practice a mapping exercise, a chance to converse and to do the hands-on work of designing connections.</i></p>
	<p>Track 2: Towards Healthy Communities: NEA Arts Research Labs and Arts in Health Intersections (Members Room)</p>
	<p>Moderator: Laurie Baefsky, UC Denver(confirmed) and Lisa Wong, Harvard Medical School(confirmed)          Lisa Howley, Senior Director of Strategic Initiatives and Partnerships, Association of American Medical Colleges (confirmed)          Sunil Iyengar, Director, Office of Research and Analysis, National Endowment for the Arts (confirmed)          Jill Sonke, Director, Center for the Arts in Medicine (confirmed)</p> <p>This panel will explore the topic of <i>Healthy Communities: Arts in Public Health</i>, the work of NEA Research Labs, and other topics in medical education such as resiliency, retention, avoiding burnout of our healthcare providers.</p>
	<p>Track 3: Assessments: what's working and what's not? (Lecture Room)</p>
	<p>Moderator: Tom Nelson Laird, Indiana University          Potential Panelists:          Charles Blaich, Director of the Center of Inquiry (Wabash College) and Higher Education Data Sharing Consortium (confirmed)          Rob Martello, Olin College of Engineering and Committee member (confirmed)</p> <p><i>What are the benefits of integration? What counts as "good" evidence of those benefits? Not every instance of integration will produce the kinds of learning we intend. For example, listening to or learning to play classical music does not necessarily improve students' math test scores despite a common belief in what some call the "Mozart effect." So, we need ways to evaluate and assess our integrative pedagogies to determine whether and what students get from those experiences. What works and what doesn't? How do we know that students are leaving the classroom with the educational outcomes that will prepare them for the future? In this panel we will explore different evaluation</i></p>

	<p><i>and assessment methods that have been used at institutions to measure educational outcomes in a systematic way and consider ways to improve upon those efforts.</i></p>
	<p><b>Track 4: The Humanics Vision: Transformational Directions in Integrative Curriculum and Research (West Court or 118)</b></p>
	<p>Dean Elizabeth Hudson, Northeastern University  Sr. Associate Dean Jane Amidon, Northeastern University  Pedro Cruz, Assistant Professor, Art + Design, College of Arts, Media and Design, Northeastern University  Jennifer Gradecki, Assistant Professor, Game Design + Media Arts, College of Arts, Media and Design, Northeastern University  Meg Heckman, Assistant Professor, Media Innovation, College of Arts, Media and Design, Northeastern University</p> <p><i>In the book Robot-Proof: Higher Education in the Age of Artificial Intelligence, Northeastern President Joseph Aoun argues for the notion of “humanics,” the integration of data literacies, technological literacies and human literacies into an innovative and resilient model for “robot-proofing” higher education. Embracing the humanics approach, the College of Arts, Media and Design is actively constructing platforms for teaching, learning and research at the intersection of data, science/technology and the human literacies of creativity, communication and collaboration. No longer situated as “soft skills,” “C<sup>3</sup>” encompasses the range of humanist practices and theoretical frameworks from critical reasoning to creative process, elevating these to an essential and central role in the future of education in balance with STEM.</i></p> <p><i>This 90-minute panel will a) describe the vision for the college’s humanics platforms in relation to broader trends in culture and education, and demonstrate how this vision has been transformational in shaping new curriculum and research program development as well as more clearly framing existing initiatives; and b) illustrate the concepts with recent examples from the work and teaching of faculty. There will be multiple opportunities for discussion.</i></p>
	<p><b>Track 5: Examples of Integrative Courses– Board Room</b></p>
	<p>Moderator: Maria Dahlberg, Program Officer, National Academies of Sciences Engineering, and Medicine  Presenters:  Youngmoo Kim, Director, Expressive and Creative Interactive Technologies (ExCITe) Center, Drexel University  Cristina Rivera Garza, Professor, Department of Hispanic Studies, University of Texas Houston  Kathryn Evans, Senior Lecturer, College of Arts and Humanities, University of Texas Dallas</p>

	<p>Maya Rashad and Callie Edmonds, Undergraduate Students, Howard University  Maggie Bourque and Katie Christensen, University of Wyoming  Maya Rashad, Undergraduate Student, Howard University</p> <p><i>What does an integrative course look like? What are the disciplines being integrated and what kind of pedagogy is involved in teaching a course that equips students to make connections between different forms of knowledge? We welcome faculty members from all disciplines that have taught courses that integrate arts or humanities with the science, engineering, or medicine. The session will be recorded and will be included in our online toolkit as a resource for practitioners interested in implementing integrative approaches in their teaching.</i></p>
3:00 – 3:30 PM	NETWORKING BREAK – WEST COURT
3:30 – 4:45 PM	<p>Successfully Integrating the Arts and Humanities in Higher Education (Auditorium)</p> <p>Moderator / Panelist: Guna Nadarajan, PhD, Dean, Penny W. Stamps School of Arts &amp; Design, the University of Michigan, report committee member (confirmed)  Nicholas Allen, PhD, Director, Willson Center for Humanities and Art, Office of Research, University of Georgia (confirmed)  Aileen Huang-Saad, PhD, MBA, Assistant Professor, Assistant Professor, Biomedical Engineering, Entrepreneurship and Engineering Education, University of Michigan (confirmed)  Jill Sonke, PhD, Director, Center for the Arts in Medicine (confirmed)</p> <p><i>The integration of arts and humanities with STEM is already successfully in practice at many research universities across the U.S. How do we scale this trend and propose more concrete approaches to educational and policy leaders to ensure all students receive access to a truly integrated education? This panel, comprised of representatives from partner universities invested in the Alliance for the Arts in Research Universities, (azru) explores successful practices and opens a dialogue to widen the path to integrated education.</i></p>
4:45 – 5:00 PM	Closing Session. (Auditorium)