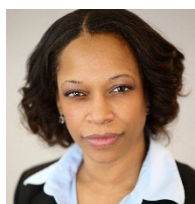




**Addressing Health Disparities in Central Nervous System Disorders:
A Virtual Workshop Series
April 2023**

Planning Committee Biographies

Yasmin Hurd, PhD, (co-chair), is the Ward-Coleman Chair of Translational Neuroscience



and the Director of the Addiction Institute at Mount Sinai. Dr. Hurd's multidisciplinary research investigates the neurobiology underlying addiction disorders and related psychiatric illnesses. A translational approach is used to examine molecular and neurochemical events in the human brain and

comparable animal models in order to ascertain neurobiological correlates of behavior. A major focus of the research is directed to risk factors of addiction disorders including genetics as well as developmental exposure to drugs of abuse such as cannabis. The group also conducts human clinical trials in developing novel therapies for opioid use disorder.

John Krystal, MD, (co-chair), is the Robert L. McNeil, Jr., Professor of Translational



Research; Professor of Psychiatry, Neuroscience, and Psychology; and Chair of the Department of Psychiatry at the Yale University. He is also Chief of Psychiatry and Behavioral Health at Yale-New Haven Hospital. He is a graduate of the University of Chicago, Yale University School of Medicine, and the Yale Psychiatry Residency Training Program. He has published extensively

on the neurobiology and treatment of schizophrenia, alcoholism, PTSD, and depression.

Notably, his laboratory discovered the rapid antidepressant effects of ketamine in humans. He is the Director of the NIAAA Center for the Translational Neuroscience of Alcoholism and the Clinical Neuroscience Division of the VA National Center for PTSD. Dr. Krystal is a member of the U.S. National Academy of Medicine and a Fellow of the American Association for the Advancement of Science. Currently, he is co-director of the Neuroscience Forum of the U.S. National Academies of Sciences, Engineering, and Medicine; and editor of *Biological Psychiatry* (IF=13.38). He has chaired the NIMH Board of Scientific Counselors and served on the national advisory councils for both NIMH and NIAAA. Also, he is past president of the American College

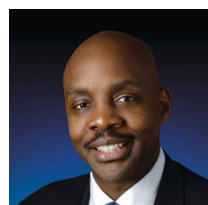


of Neuropsychopharmacology (ACNP) and International College of Neuropsychopharmacology (CINP).

Lilyana Amezcua, MD, is an Associate Professor of Neurology and the fellowship program director at the University of Southern California (USC), Keck School of Medicine. She received her Bachelor of Science degree from University of California Irvine in Irvine, California, her medical degree from Jefferson Medical College in Philadelphia, Pennsylvania, followed by neurology residency and clinical fellowship in neuroimmunology and multiple sclerosis at USC. She received her Master of Science degree in clinical, biomedical, and translational science from USC, Preventive Medicine, under a Clinical Translational Science Institute NIH KL2 award. She serves as principal investigator on multiple clinical research projects and her research interests includes defining racial/ethnic disparities and modifiable (environmental and sociocultural) from non-modifiable genetic factors involved in disease severity and progression of MS. She also serves as an elected member to the NMSS medical advisory board, American Academy of Neurology Quality Measures for MS, NIH NINDS Health Disparities Strategic Steering Committee and is a member of the Spanish editorial board to Brain and Life magazine of the American Academy of Neurology. She was recognized for her dedication by the NMSS with an induction into the Health Professionals Hall of Fame (2015) and as a National Health Care Champion (2022).



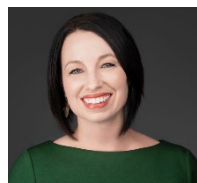
Richard Benson, MD, PhD, is Director of the Office of Global Health and Health Disparities (OGHHD) in the NINDS Division of Clinical Research. He is a leader in the fields of vascular neurology and health disparities research. His areas of research interest and expertise include health disparities and health equity research, and minority, community, and global health. Dr. Benson has worked in the public and private sectors and is a volunteer with several professional organizations. He is a past president and current board member of the American Heart Association (AHA), Greater Washington Region (GWR). He was a member of the national AHA Stroke Council and is currently an American Academy of Neurology (AAN) Registries committee member. Dr. Benson received his B.S. in Chemistry from Fisk University, followed by an MD/PhD from Meharry Medical College in Neurophysiology (elected to AOA). Subsequently, he completed his neurology residency at the Harvard-Longwood neurology residency program in Boston, and a stroke





fellowship at the Columbia University Neurological Institute in New York, while obtaining an M.S. in Epidemiology from the Mailman School of Public Health. After fellowship, Dr. Benson worked as a vascular neurologist in New York City at the Long Island Jewish Medical Center and St. Luke's-Roosevelt Medical Centers. In 2005, he moved to the Washington D.C. area to work as a Program Director in what was then the Office of Minority Health and Research at the NINDS. He left the NIH in 2008 to focus on patient care, and in 2010 became Associate Medical Director of the NIH Stroke Program at Medstar Washington Hospital Center and Associate Professor of Clinical Neurology at Georgetown University Medical Center. Dr. Benson returned to the NINDS in 2019 to direct the OGHHD.

Christina Borba, PhD, MPH, is the Director of the Office for Disparities Research and



Workforce Diversity (ODWD) at the National Institute of Mental Health (NIMH). In her role as director of ODWD, Dr. Borba leads the development and implementation of scientific policies and research initiatives aimed at reducing mental health disparities and advancing equity in mental health interventions, services, and outcomes. Her work also focus on increasing workforce diversity and scientific attention to mental health disparities experienced by women and people living in rural areas. Dr. Borba received her doctorate in public health from Emory University and her master's degree in public health from Boston University. In her previous position, she served as the vice-chair of Research in the Department of Psychiatry at Boston Medical Center (BMC) and director of the BMC Global and Local Center for Mental Health Disparities. Dr. Borba also served as an associate professor of psychiatry at Boston University School of Medicine (BUSM). Her career spans more than 20 years and includes experience informing and developing evidence-based interventions to mitigate disparities in mental health among marginalized populations. Her most recent research focused on psychotic disorders and cultural psychiatry in low-resourced settings in the United States and abroad, women's mental health, and gender differences in care.



Katja Brose, PhD, is a Science Program Officer at the Chan Zuckerberg Initiative. The goals of



Chan Zuckerberg Science Initiative are to support basic science and technology that will make it possible to cure, prevent, or manage all diseases by the end of the century. Before joining CZI, she was part of the editorial team at Cell Press for 17 years, where from 2004-20017 she was Editor-in-Chief of *Neuron* and a Publishing Director at Cell Press-Elsevier. During her tenure as Editor, *Neuron* undertook a major expansion of its scope building on its historical strengths in molecular and cellular neuroscience to cover all areas of neuroscience from molecular/cellular mechanisms to systems and cognitive neuroscience, genetics, neurological and psychiatric disease, theoretical neuroscience and emerging technologies. As Publishing Director, she was responsible for Cell Press strategy for review content, including oversight of the Trends family of review journals. She also led Cell Press' efforts around rigor and reproducibility. She has been an active committee member at the Society for Neuroscience, as a member of the Professional Development and Neuroscience Training Committees. She speaks frequently on topics related to scientific publishing and communication, including publication ethics and rigor and reproducibility in science. She earned her undergraduate degree in 1990 from Brown University, with a double concentration in Biology and European History. She received her PhD in Biochemistry from the University of California-San Francisco (1994-2000). For her graduate work, she worked in the laboratory of Dr. Marc Tessier Lavigne focusing on axon guidance mechanisms in the developing spinal cord.

Daniel Hackman, PhD, is an Assistant Professor at the University of Southern California

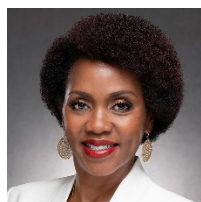


Suzanne Dworak-Peck School of Social Work. He is interested in how social and environmental contexts influence developmental trajectories of health and well-being across the lifecourse. He investigates how socioeconomic, family, and neighborhood factors, particularly those in early childhood, become associated with the cognitive, affective, and biological systems that influence healthy development. His focus has been on executive function and stress reactivity, at the behavioral, physiological, neurobiological level. He is also interested in the social experiences and mechanisms that can promote health and attenuate risk processes, as Dr. Hackman aims to leverage this work to identify more effective policy and programmatic approaches to prevent and reduce socioeconomic disparities. Dr. Hackman uses a multi-method, interdisciplinary



approach, often longitudinal in nature, integrating tools from population health, psychology, neuroscience, and social work. Recently, he has also developed a virtual reality-based experimental model of neighborhood disadvantage and affluence that can be employed to test mechanistic and developmental hypotheses concerning neighborhood effects on cognition, emotion, physiology and health across development. Prior to his appointment at USC, Dr. Hackman was a Robert Wood Johnson Health & Society Scholar at the University of Wisconsin-Madison. He completed his Ph.D. in clinical psychology at the University of Pennsylvania, and a predoctoral clinical internship and postdoctoral fellowship at the Western Psychiatric Institute and Clinics, part of the Department of Psychiatry at the University of Pittsburgh School of Medicine. Dr. Hackman also has experience as a policy advocate in the nonprofit sector, focused on chronic disease prevention in childhood and adolescence.

Quita Highsmith, MBA, is Vice President and Chief Diversity Officer at Genentech, a



member of the Roche Group. At Genentech Quita was selected as the first Chief Diversity Officer in the 46-year history of the company and reports to the CEO. She is responsible for enterprise-wide strategic initiatives that drive business impact by investing in commercial efforts, stakeholder engagement, research innovation and community relations. Outside of D&I knowledge, Quita brings brand marketing, business development and a global leadership perspective. Prior to becoming the CDO, she held leadership roles in Commercial and Government Affairs of several companies, including Genentech and Sanofi-Aventis, where she impacted and improved revenues. Because she recognized the need to diversify clinical research, she co-founded Advancing Inclusive Research®, an initiative to embrace equitable access. Quita is routinely requested to address members of Congress, speak at national and international forums, and participate in media interviews with both national local outlets, such as WSJ, STAT, The Atlantic, Katie Couric Media, and the HuffPost. She has co-authored several publications regarding health disparities in peer reviewed journals. In 2022, she was chosen by Savoy Magazine as one of the Most Influential Black Executives in Corporate America and named Executive of the Year by Lead360. Quita is an advisor to Cerebral, a mental health startup company and Artis Ventures. She is also committed to community service by working with nonprofit boards such as Congressional Black Caucus Foundation, Northwest Kidney Centers, Delta San Francisco-Peninsula Scholarship Foundation and The Genentech Patient Foundation, serving on the Audit Committee. Quita



received both a Master of Business Administration Degree and an Advanced Diversity and Inclusion Certificate from Cornell University, as well as her undergraduate degree from the University of Kentucky.

Carl Hill, PhD, MPH, is the chief diversity, equity, and inclusion officer for the Alzheimer's



Association®, overseeing strategic initiatives to strengthen the Association's outreach to all populations, and providing communities with resources and support to address the Alzheimer's crisis. Dr. Hill previously served as the Association's vice president, Scientific Engagement. Prior to joining the Association, he served as director, Office of Special Populations at the National Institutes on Aging (NIA). In Dr. Hill's six years at the NIA, he led the development of the NIA Health Disparities Research Framework, which stimulates studies focused on health disparities related to aging. He also directed the NIA Butler-Williams Scholars Program, which provides yearly training for early-career investigators interested in aging research.

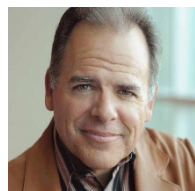
Jennifer Manly, PhD, is a Professor of Neuropsychology in the Department of Neurology at



Columbia University Irving Medical Center. She completed her PhD in neuropsychology at the San Diego State University/University of California at San Diego joint doctoral program in clinical psychology. Her research focuses on mechanisms of inequalities in cognitive aging and Alzheimer's Disease. In order to do this research, her research team has partnered with the Black and Latinx communities in New York City and around the United States to design and carry out investigations of structural and social forces across the lifecourse, such as educational opportunities, racism and discrimination, and socioeconomic status, and how these factors relate to cognition and brain health later in life. Her research has been funded by the National Institutes of Health and the Alzheimer's Association. She has authored over 220 peer-reviewed publications and 10 chapters. She was the 2014 recipient of the Tony Wong Diversity Award for Outstanding Mentorship, and was the recipient of the Paul Satz-International Neuropsychological Society Career Mentoring Award in 2020. Dr. Manly was elected to the National Academy of Medicine in 2021. She served on the HHS Advisory Council on Alzheimer's Research, Care and Services from 2011 – 2015 and is a member of the National Advisory Council on Aging.



Spero Manson, PhD, (Little Shell Chippewa) is Distinguished Professor of Public Health and

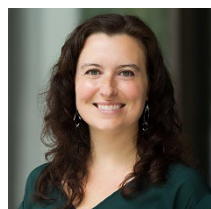


Psychiatry, directs the Centers for American Indian and Alaska Native Health, and occupies the Colorado Trust Chair in American Indian Health within the Colorado School of Public Health at the University of Colorado Denver's Anschutz Medical Center. His programs include 10 national centers, which

pursue research, program development, training, and collaboration with 225 Native communities, spanning rural, reservation, urban, and village settings across the country. A medical anthropologist, Dr. Manson has acquired \$268 million in sponsored research to support this work and published 280+ articles on the assessment, epidemiology, treatment, and prevention of physical, alcohol, drug, as well as mental health problems over the developmental life span of Native people. He has served on the National Advisory Councils of 3 institutes at the National Institutes of Health (NIH), and recently completed a 4-year term as a member of its Advisory Committee to the Director. Dr. Manson sits on the Health Equity Advisory Committee of Health Affairs, and the search committee for Editor-in-Chief of the Journal of the American Medical Association. Over the course of his 45-year career, Dr. Manson has mentored more than 150 young scientists, most American Indian or Alaska Native, many of whom now occupy major positions of scientific leadership. His numerous awards include the American Public Health Association's Rema Lapouse Mental Health Epidemiology Award (1998) and Award for Lifetime Contribution to the Field of Mental Health (2019), 4 special recognition awards from the Indian Health Service (1985, 1996, 2004, 2011), election to the National Academy of Medicine (2002); 2 Distinguished Mentor Awards from the Gerontological Society of America (2006; 2007), Association of American Colleges of Medicine's Nickens Award (2006); George Foster Award for Excellence (2006) and Distinguished Career Achievement Award (2020) from the Society for Medical Anthropology, NIH Health Disparities Award for Excellence (2008), Bronislaw Malinowski Award from the Society for Applied Anthropology (2019); Centers for Disease Control Foundation's Elizabeth Fries Health Education Award (2021), and the Rhoda and Bernard Sarnat International Prize in Mental Health from the National Academy of Medicine. He is widely acknowledged as one of the nation's leading authorities in regard to Indian and Native health.



Nicole Rosendale, MD, is an Assistant Professor of Neurology in the Neurohospitalist



Division at University of California San Francisco (UCSF). She attended New York University School of Medicine before moving to San Francisco for residency and fellowship training at UCSF. She is the Director of Inpatient Neurology Services at San Francisco General Hospital and Co-Director of UCSF BALANCE, a program dedicated to advancing neurologic health equity locally, nationally, and globally through education, research, clinical care, and community engagement. She primarily attends at San Francisco General Hospital, the city's safety-net hospital and only Level 1 trauma center. Her clinical expertise encompasses the acute manifestations of neurologic disease, including stroke, neuroinfectious disease, and the neurologic manifestations of systemic disease. In addition to her clinical duties, Dr. Rosendale is dedicated to advancing health equity in neurology through research and education, with a particular focus on LGBTQ+ health. Her work has defined the current state of scientific literature in neurologic LGBTQ+ health, educated around caring for transgender individuals in the acute setting, and exposed discrepancies between self-reported competence in caring for LGBTQ+ individuals and LGBTQ+ health knowledge in U.S. neurologists. She serves as a member of the American Academy of Neurology Inclusion, Diversity, Equity, Anti-Racism and Social Justice (IDEAS) Subcommittee, on the American Heart Association Bay Area Board of Directors, and is the Associate Editor of IDEAS for Continuum.

National Academy of Medicine Fellow

Tracy Madsen, MD, PhD, FAHA, FACEP is an Associate Professor of Emergency Medicine



and Epidemiology at Brown University, the Vice-Chair of Research in the Department of Emergency Medicine, and serves as the Interim Director of the Division of Sex and Gender in Emergency Medicine. She has expertise in sex and gender-based medicine, acute cerebrovascular disease, stroke epidemiology and prevention, and disparities in the healthcare system and in the emergency medicine workforce. Dr. Madsen's research is funded by the National Heart, Lung, and Blood Institute. She has over 100 peer reviewed publications, speaks nationally and internationally on topics including stroke in women, health inequities in stroke, and disparities in the academic emergency medicine workforce. She is regarded as an expert in the field of stroke in women. She completed a



master's degree in Clinical and Translational Research and a PhD in Epidemiology, both at the Brown University School of Public Health. Dr. Madsen received her MD from the Boston University School of Medicine and completed a residency (with last year as Chief Resident) at Brown University before completing a research fellowship in the Division of Sex and Gender Medicine at Brown University. She is also a 2021 National Academy of Medicine Fellow in Emergency Medicine.