

SAE INTERNATIONAL

EMERGING STANDARDS FOR EMERGING MOBILITY

TRB Mobility Management Committee Meeting

April 18, 2019

Adam Cohen
apcohen@Berkeley.edu

Adrian Guan
Adrian.guan@sae.org



HELLO
my name is

ADRIAN GUAN
International Standards Engineer
SAE International



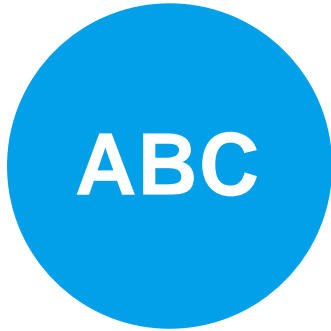
HELLO
my name is

ADAM COHEN
Research Associate
UC Berkeley



SAE Shared and Digital Mobility Committee

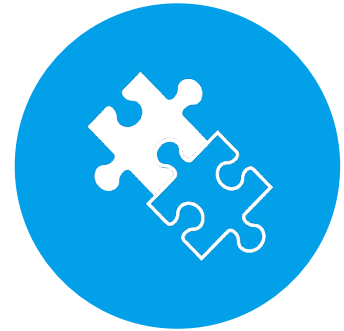
The mission of this committee is to advance the field of shared and digital mobility through the development of industry standards. The standards will serve to:



CREATE A COMMON
LANGUAGE



HARMONIZE GLOBAL
MARKETS

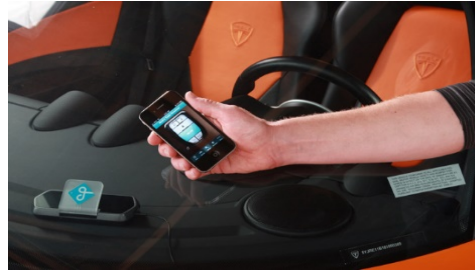


FACILITATE
INTEROPERABILITY

This Committee Could Work on...



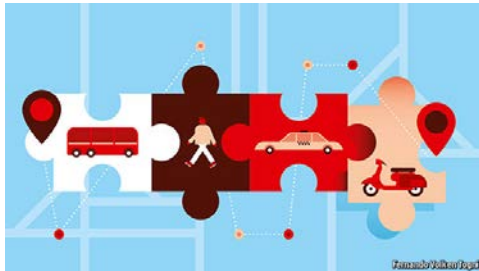
SHARED
AUTOMATED VEHICLES



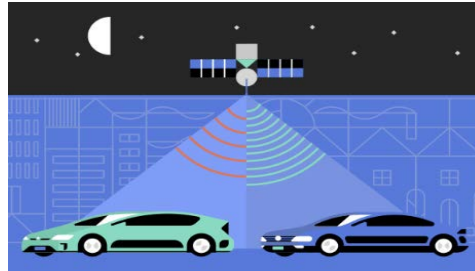
CARSHARING
VEHICLE ENTRY



BIKESHARING
TECHNOLOGIES



MOBILITY-AS-A-SERVICE
API



DATA FROM
MOBILITY PROVIDERS





SURFACE TRANSPORTATION RECOMMENDED PRACTICE

J3163™

SEP2018

Issued 2018-09

Taxonomy and Definitions for Terms Related to Shared
Mobility and Enabling Technologies

RATIONALE

Standardizing definitions of shared mobility and supporting terms serves several purposes:

- It will help reduce traveler uncertainty regarding shared mobility services, confusion about terminology used by the media, and discrepancies in terminology used internationally that contribute to public confusion and misperceptions.
- It will allow public agencies to clarify policies related to shared mobility, such as insurance, taxation, rights-of-way, parking, and zoning.
- It will help unify public and private sector definitions and aid in the development of services, as well as the formation of public-private partnerships.

This document has been developed according to the following guiding principles. It should:

- Be descriptive and informative rather than normative;
- Provide functional definitions;
- Be consistent with current industry practice;
- Be consistent with existing literature to the extent practicable;
- Be useful across disciplines including: engineering, planning, law, and journalism;
- Be clear and cogent and, as such, it should avoid or define ambiguous terms;
- Address inconsistencies in overlapping work and competing definitions in the field of shared mobility to achieve standardization; and
- Not provide any competitive advantage for any particular shared mode or service provider.

SAE Technical Standards Board rules provide that: "This report is published by SAE to advance the state of technical and engineering sciences. The use of this report is entirely voluntary, and its applicability and suitability for any particular use, including any patent infringement arising therefrom, is the sole responsibility of the user."

SAE reserves each technical report at least every five years at which time it may be revised, reaffirmed, stabilized, or canceled. SAE invites your written comments and suggestions.

Copyright © 2018 SAE International

All rights reserved. No part of this publication may be reproduced, stored in a retrieval system or transmitted, in any form or by any means, electronic, mechanical, photocopying, recording, or otherwise, including "incorporation by reference," without the prior written permission of SAE.

TO PLACE A DOCUMENT ORDER:

Tel: 800-682-7332 (toll free USA and Canada)
Tel: +1 248-776-4070 (outside USA)
Fax: 248-776-4700
Email: CustomerService@sae.org
<http://www.sae.org>

SAE WEB ADDRESS:

SAE values your input. To provide feedback on this Technical Report, please visit http://standards.sae.org/J3163_201809

We created a GLOSSARY

Taxonomy and Definitions for Terms Related to Shared Mobility and Enabling Technologies

Scope

A taxonomy describing the spectrum of shared mobility services, including definitions for shared modes (e.g., carsharing, bikesharing, etc.) and related terms and definitions (i.e., one-way, roundtrip, etc.).

Led by

Susan Shaheen, Ph.D., UC Berkeley
& Adam Cohen, UC Berkeley

What is Covered in SAE J3163?



TRAVEL
MODES

e.g. bikesharing
& carsharing



MOBILITY
APPLICATIONS

e.g. mobility tracker
apps



SERVICE
MODELS

e.g. P2P service
model



OPERATIONAL
MODELS

e.g. station-based
roundtrip



BUSINESS
MODELS

e.g. B2B services
& B2C services



DEPRECATED
TERMS

e.g. ridesharing

ACCELERATED development of J3163



1. COMMITTEE
DEVELOPS SCOPE

Dec 2017



2. EXPERT PANEL
DEVELOPS DRAFT

Jan to Apr 2018



3. BALLOT &
COMMENT RESOL'N

May to Aug 2018



4. PUBLISH
STANDARD

Sept 2018

<https://www.sae.org/shared-mobility>



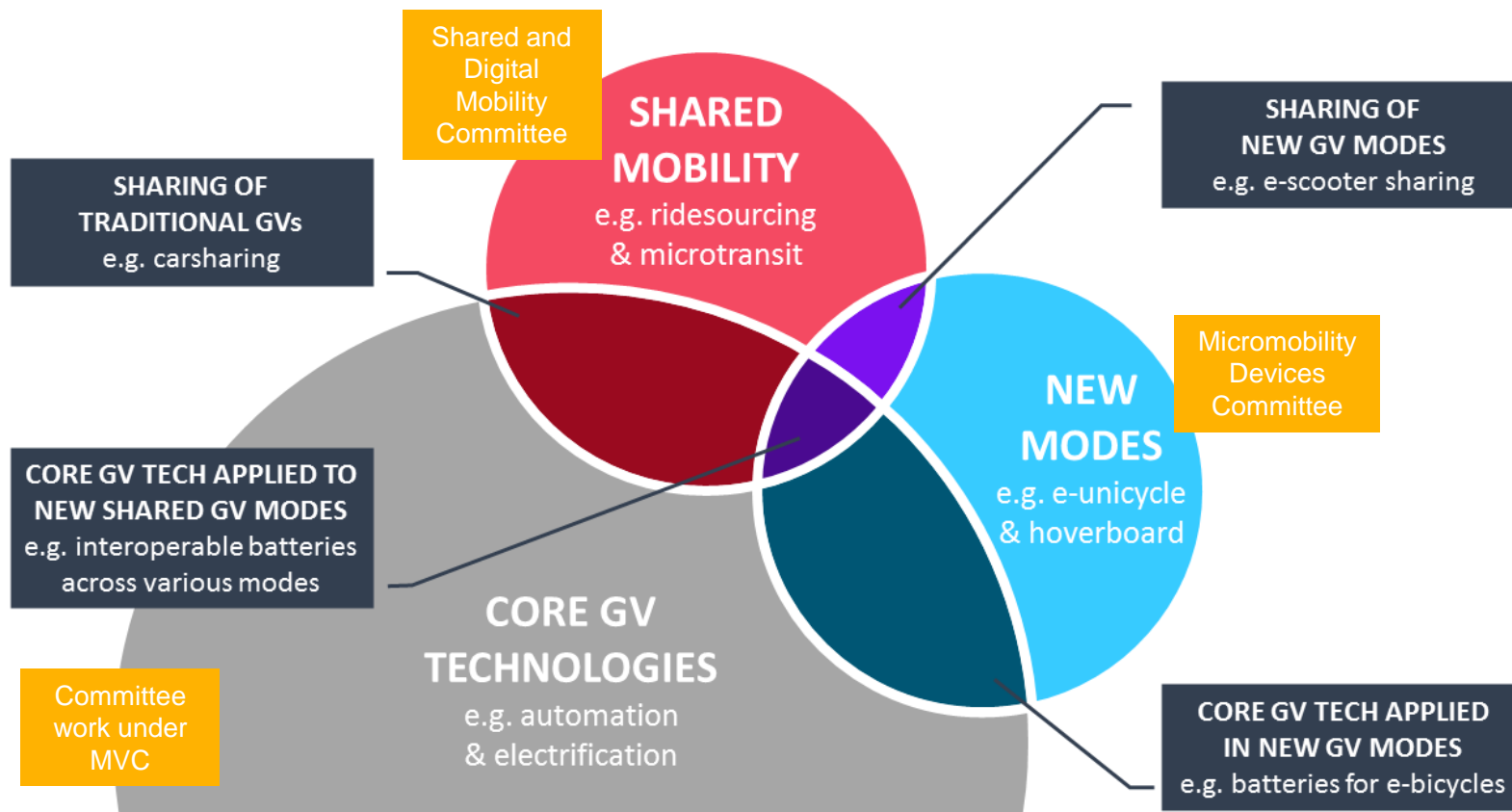
NEXT STEPS





What are these things called?

Current Mobility Landscape & SAE Standards



THANK YOU

my name is

ANNIE CHANG

Global Ground Vehicle Standards
SAE International



annie.chang@sae.org



+1 (248) 404-0802

