



National Eye Institute  
Research Today...Vision Tomorrow

# National Eye Institute Perspective

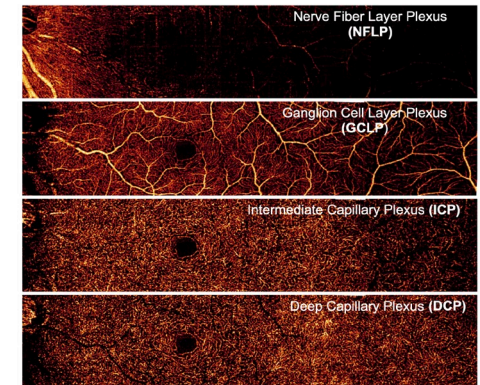
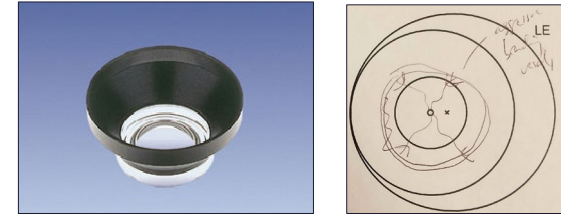
---

Michael F. Chiang, M.D.  
Director, National Eye Institute  
National Institutes of Health  
Twitter: @NEIDirector

Addressing Health Disparities in CNS Disorders  
NASEM Neuroscience Forum  
April 18, 2023  
**No Financial Disclosures**

# What Can the Vision Field Contribute to this Discussion?

- **Technology development:** qualitative to quantitative paradigms
  - Historically: nuanced examination
  - Now: more **imaging** → **telehealth, AI** (first FDA-cleared autonomous AI system)
- **Methodological research** with potential impact: **access** for underserved populations, **cost** of care (imaging biomarkers, e.g. Alzheimer's)
- **Big data & registries** (e.g. IRIS, Bridge2AI): risks of **bias**, risks of **privacy**, challenges of historically marginalized groups
- Importance to technology to **narrow, rather than widen, gaps**
- **Accessibility by visual disabled** (and intersection with aging)



Abramoff et al, NPJ Digit Med 2018 Aug 28;1:39  
Majeed et al, Front Aging Neurosci 2021; 13:720167

