



Science-Policy Linkages to Further Support Research on SDGs

Livia Bizikova

International Institute for Sustainable Development

Crucial issues to start with

Slow progress with achieving the SDGs

Additional impacts because of COVID –

resources spent on COVID both to address the diseases and related economic consequences and we need more efforts to address SDGs (additional challenges, implementation delays)

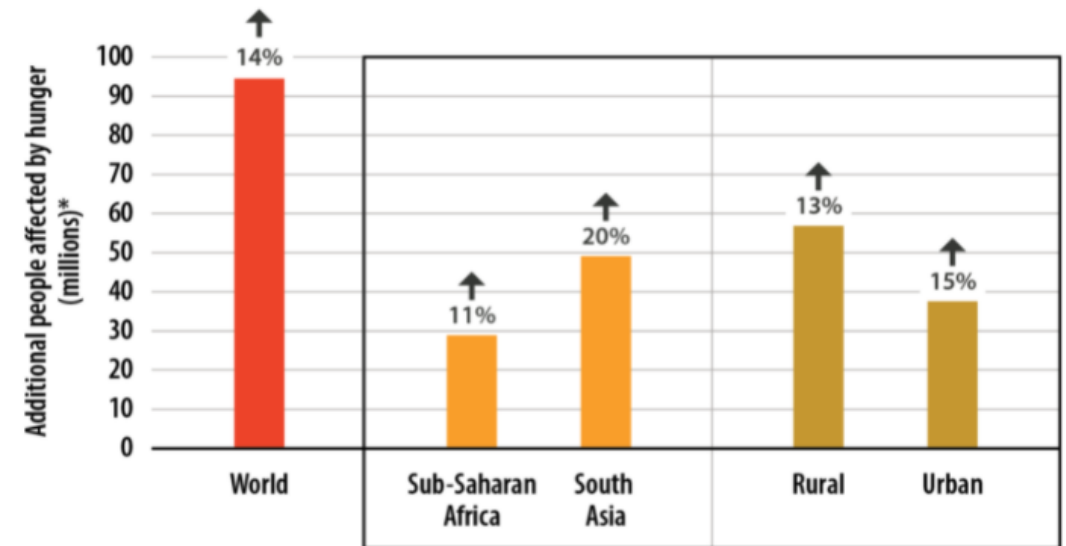
Immense amount of literature production

requires tools and approaches to track progress with research efforts and other issues relevant for SDGs – aspects of implementation efforts and gaps (?)

An additional 95 million people could be affected by hunger in 2020



Predicted impact of COVID-19 on food security and nutrition in 2020



IFPRI and IISD (2020); UN's 2020 *State of Food Security and Nutrition in the World* (SOFI) report.

https://ceres2030.org/shorthand_story/10-bn-needed-to-avert-the-covid-19-hunger-crisis/

New kind of science is needed?

Necessary to continue the assessment of sustainability problems and priorities

Explicit focus on **an integrated evaluation of different policies to create a policy mix** and their **impacts** is needed

Four aspects: Focus of the collaboration, type, sources and information integrated in the research to be relevant for the SDGs



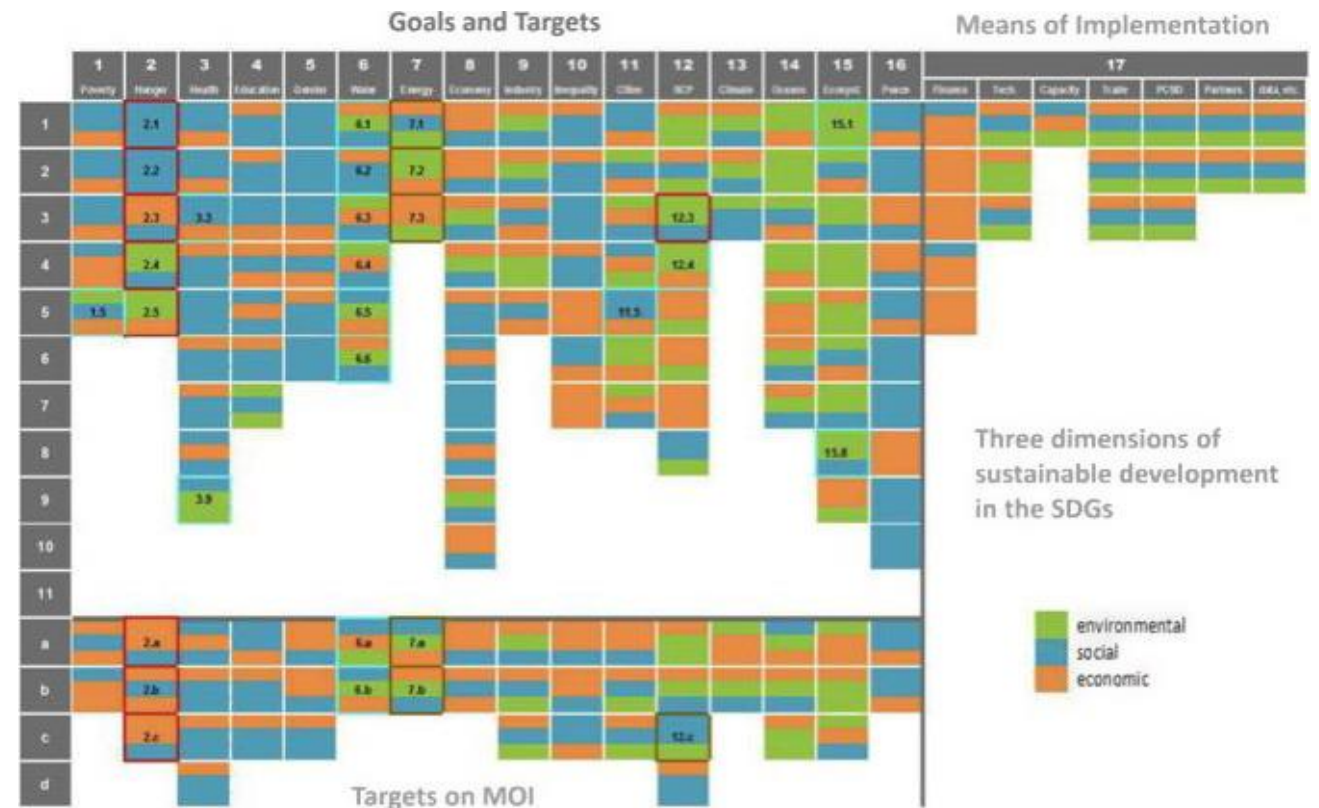
Source:

<https://www.pinterest.ca/pin/307722587013562884/>

New kind of research to respond to SDGs?

SDGs bring together all aspects of sustainable development

- Multi-disciplinary approach is important, but the suggested focus is rather on the linkages that cross social science, natural and health sciences, engineering and technology-based solutions and their impacts



New kind of research to respond to SDGs?

Impacts of policy options and costing

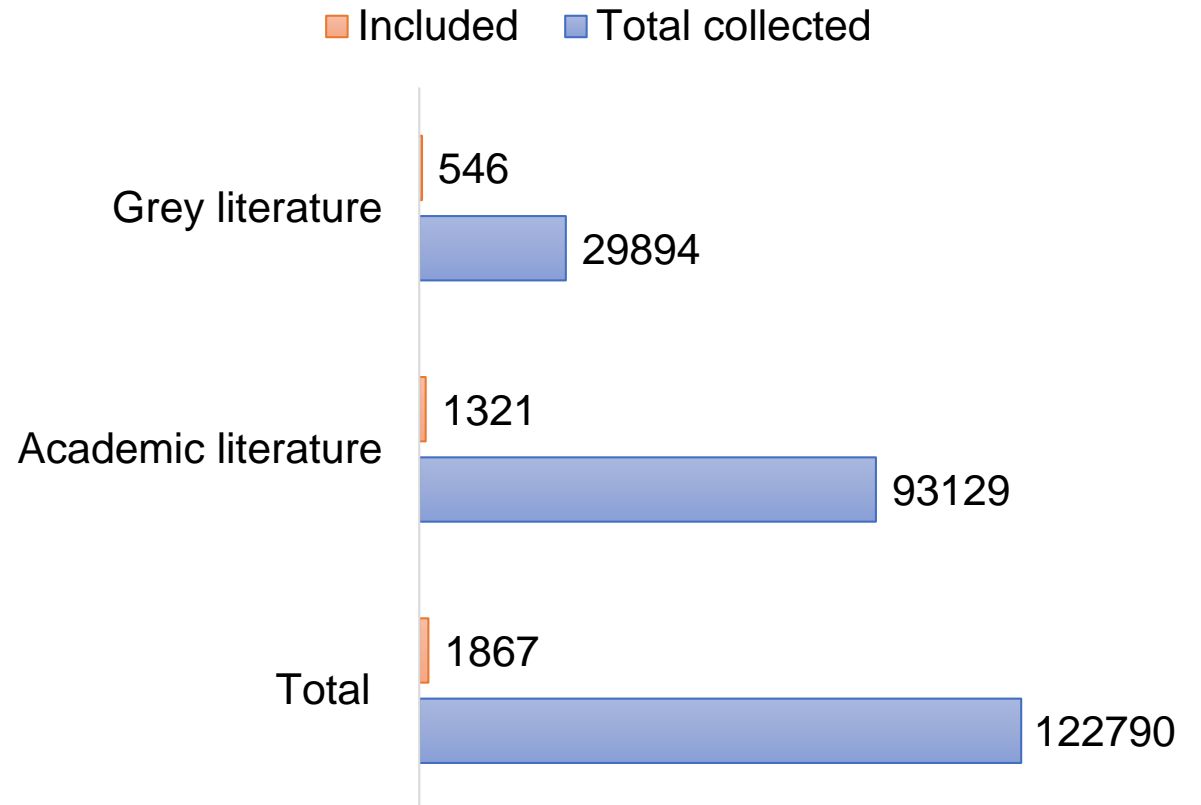
- Type of research – policy –relevance
- Papers providing details on measures to achieve SDGs
- Very limited information on actual costs of measures/policies



New kind of research to respond to SDGs?

Integration of grey literature

- Grey literature refers to publications that are not published by established commercial or academic publishers
- Crucial evidence for policy-makers—accessible, timely, and reactive.
- Quality of the methodology across the two sources was comparable
- In references of the peer-reviewed papers



New kind of research to respond to SDGs?

- Gap between information in the paper abstracts and key words and their actual focus on the listed issues in the context of SDG 2
- Examples of contributing to SDG 2 (2.1.food security) from diverse measures and research efforts (health, agriculture, engineering)

