

# Cummins Case Study on Advancing Economic Development and Workforce Opportunities in Southern Indiana

**Joan  
Wills**

Technical Executive Director  
Power Systems Segment  
Cummins Inc.



# POWERING

A MORE PROSPEROUS WORLD



# Cummins Globally:

## Powering a more prosperous world in 2017

**190**

Countries &  
territories

**58,600**

Global  
employees

**1.3M+**

Engines built in  
2017

**8,000**

Service  
locations

**\$734M**

Invested in  
R&D in 2017

**99**

Years of  
industry  
leadership



# Cummins in Indiana

**4**

Major locations in  
Elkhart, Columbus,  
Seymour and  
Indianapolis

**9,500**

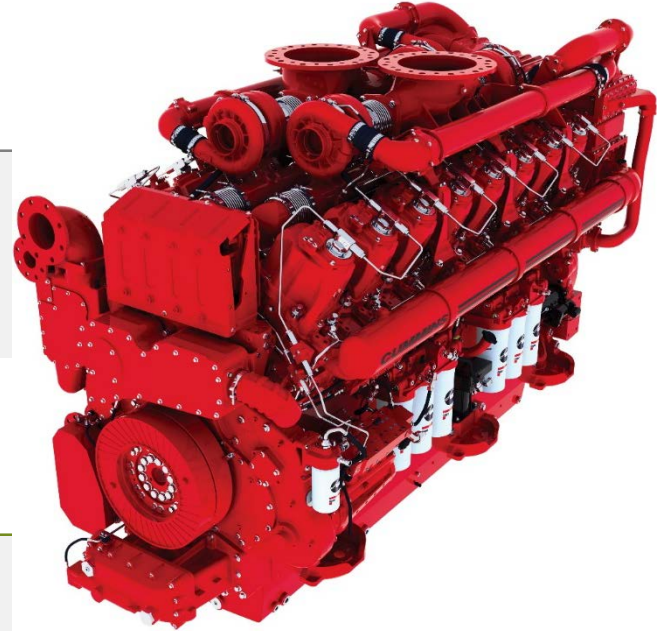
Employees in  
Indiana

**1,700**

Manufacturing  
employees

**3,200**

Engineers



# Innovating globally

2012 – Data enabled field tests in mining, oil & gas, and rail begin (U.S., Canada and Japan).

2007 – Product development accelerates, including single-cylinder engine development to optimize combustion 19L is the focus (IN).

2004 – Project launched to set architecture direction. Leveraged research with Purdue and Ohio State plus Oakridge National Lab (IN, TN, WI).

2014 – Production launch of 19L and 95L for passenger rail, 50L for frac rig. (UK and WI).

2010 – Started development on 50L engine. Design work. (UK). Analysis work (India). Started development on 30L with Komatsu (Japan). Finalized design and approach for 95L (IN).

2018 – Launch of QST30 for mining and oil & gas, rail, QSK78 for mining, contributions (IN, WI, UK, India and Japan).

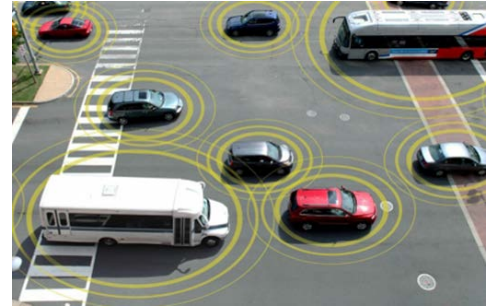
# The future requires many solutions and new skill areas



This is a period of transformative change.



Energy diversity is critical for a carbon-constrained world.



Advancements in connectivity and automation will drive efficiencies further.