

What is the Climate Knowledge Exchange?

In 2020, The Mayor's Office of Climate Resiliency initiated the Climate Knowledge Exchange engagement process to encourage dialogue among governmental and non-governmental organizations in New York City and to support the process of aligning research with resiliency and adaptation needs.

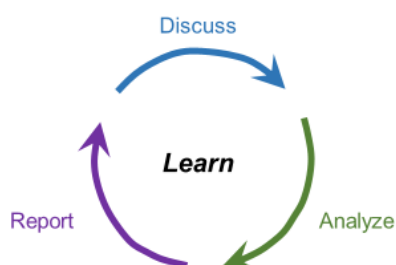
Why do the Climate Knowledge Exchange?

Climate change is already impacting New York City and we know that structural inequalities cause some people to experience these impacts more often or more severely than others. Scientists and researchers play a vital role in supporting governmental and non-governmental organizations in the fight against climate change and inequality. To effectively do that, they must understand what we know, do not know, and need to know about climate change and how it impacts New York City (NYC).

Who is involved in the Climate Knowledge Exchange?

We want to engage scientists, government agencies, community-based organizations, and residents. We recognize people have limited time and are all coming from different levels of comfort and familiarity with science. To meet these different needs, the Climate Knowledge Exchange is designed to be participatory, data-driven, accountable and inclusive.

Approach



Principles



** We include more people when we sustain the process*

How does the Climate Knowledge Exchange help me?

We call it the Exchange because we are sharing our time, knowledge, and relationships. With a better understanding of each other's context, we can connect each other with useful information and directly influence New York City's climate research agenda. The MOCR will use the feedback collected during the Exchange to prepare the annual State of Climate Knowledge reports. These reports can be used to raise funding to address the issues most in need of new research or assessments.

What are the outcomes of the Climate Knowledge Exchange?

Based on the input from the Climate Knowledge Exchange, MOCR prepares the annual State of Climate Knowledge report. This report contributes to the process of understanding which issues related to climate resiliency require new science and research by engaging a broad range of stakeholders. Annual updates to the report will make public input an ongoing part of raising funds to address our climate resiliency and adaptation needs.

Climate Knowledge Exchange

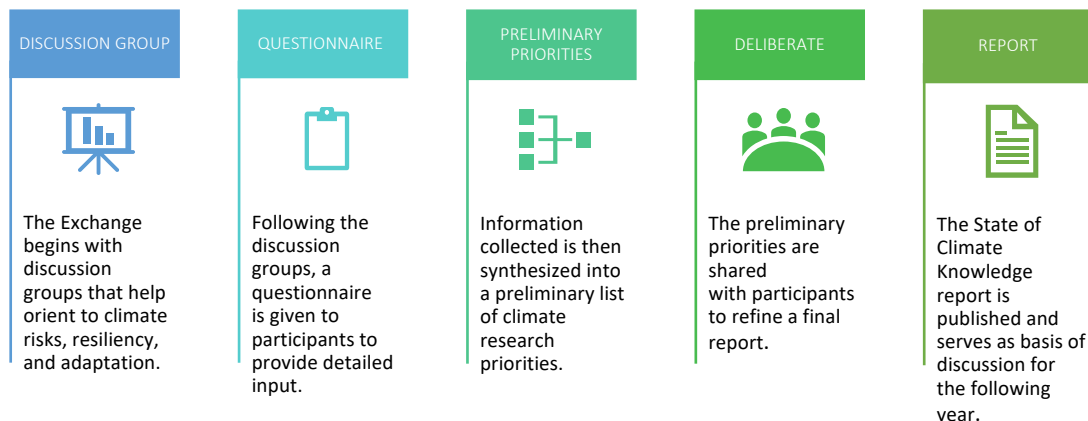
Don't we already know our priorities?

We are not starting from scratch. Over the past decade of responding to climate change, community organizations, government agencies, and scientists in NYC have amassed a wealth of climate knowledge, applying scientific and local information and learning from experience. As a result, practitioners, residents, and scientists already have many ideas about what science and research is needed, many of which are already published.

What's the relationship between the Climate Knowledge Exchange and NPCC?

NYC is fortunate to have an internationally recognized model for climate assessment in the New York City Panel on Climate Change (NPCC), an independent panel of climate experts appointed by the Mayor. Since the NPCC's formation, they have developed highly accurate and detailed climate projections specific to the NYC region and have issued three Assessment Reports. MOCR will also work directly with NPCC to address the priority issues identified in the State of Climate Knowledge reports.

The Climate Knowledge Exchange Annual Process



What happens if my top priority does not end up in the State of Climate Knowledge report?

Generally, engagement processes build toward larger outcomes when they are sustained. By 'sustained,' we mean that we hope to build relationships starting from these conversations and to create mechanisms for looping back with participants on a regular basis. By making this an annual process, MOCR aims to make the case for more research priorities.

Ways To Participate

- 1. Co-host a Discussion Group:** If you have a group of 5 – 20 people in your organization, neighborhood, or area of interest, we are happy to co-host a discussion group. It takes an hour and a half and requires participants to have internet access.
- 2. Take the survey:** Don't have time for a discussion group? We have a fact sheet that provides a rough substitute for the discussion group. People can read the fact sheet and take the survey.
- 3. Send us background on your priorities:** Don't feel like taking a survey. Send us information about where you think more research or science on climate change and its impacts is needed.