

NASEM: Mental Health Needs of an Aging Population – SAMHSA Resources and CCBHCS May 15, 2023



SAMHSA
Substance Abuse and Mental Health
Services Administration

Introduction

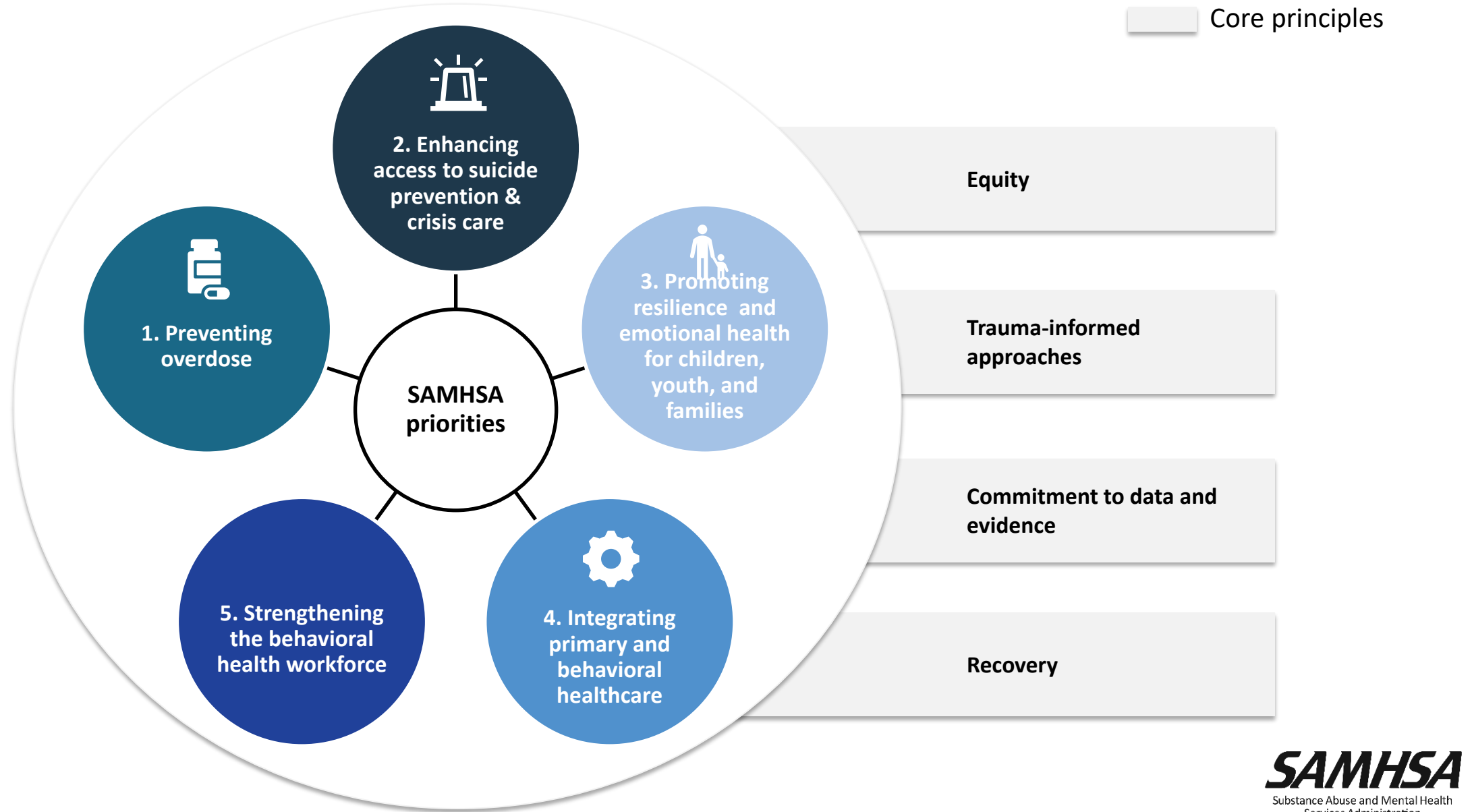


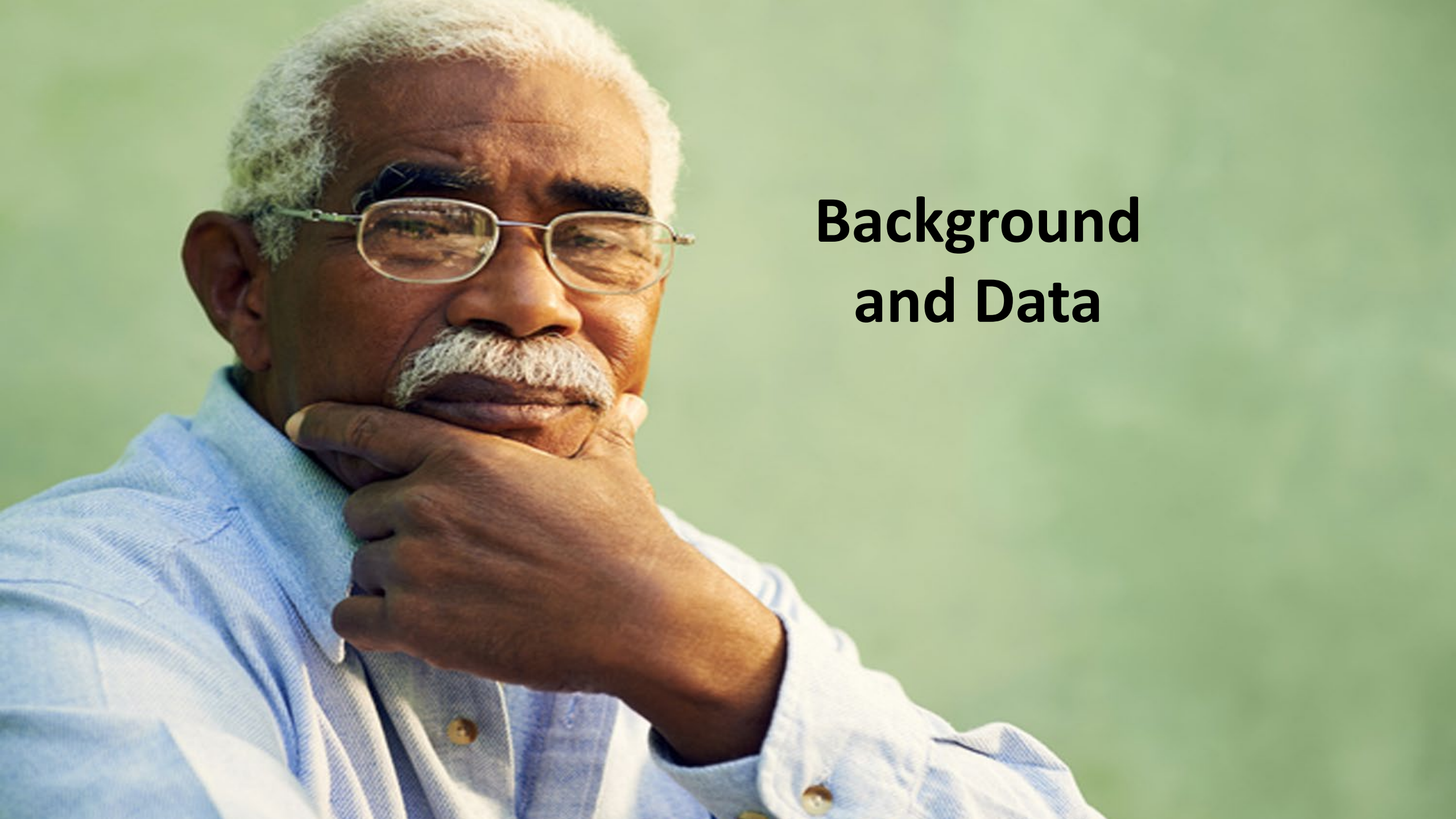
What is SAMHSA?

- The Substance Abuse and Mental Health Services Administration (SAMHSA) is the agency within the U.S. Department of Health and Human Services that leads public health efforts to advance the behavioral health of the nation. SAMHSA's mission is to reduce the impact of substance abuse and mental illness on America's communities.
- Our main operational divisions are the:
 - Office of the Assistance Secretary – Miriam Delphin-Rittmon, PhD
 - Center for Substance Abuse Treatment
 - Center for Substance Abuse Prevention
 - Center for Mental Health Services
 - Center for Behavioral Health Quality and Statistics (CBHSQ)
 - Policy Lab
- Final FY 2023 budget \$7.4 billion (including increases for opioid use disorder prevention and treatment, mental health treatment and 988/crisis services) – more than doubled in last decade



SAMHSA Interim Strategic Plan

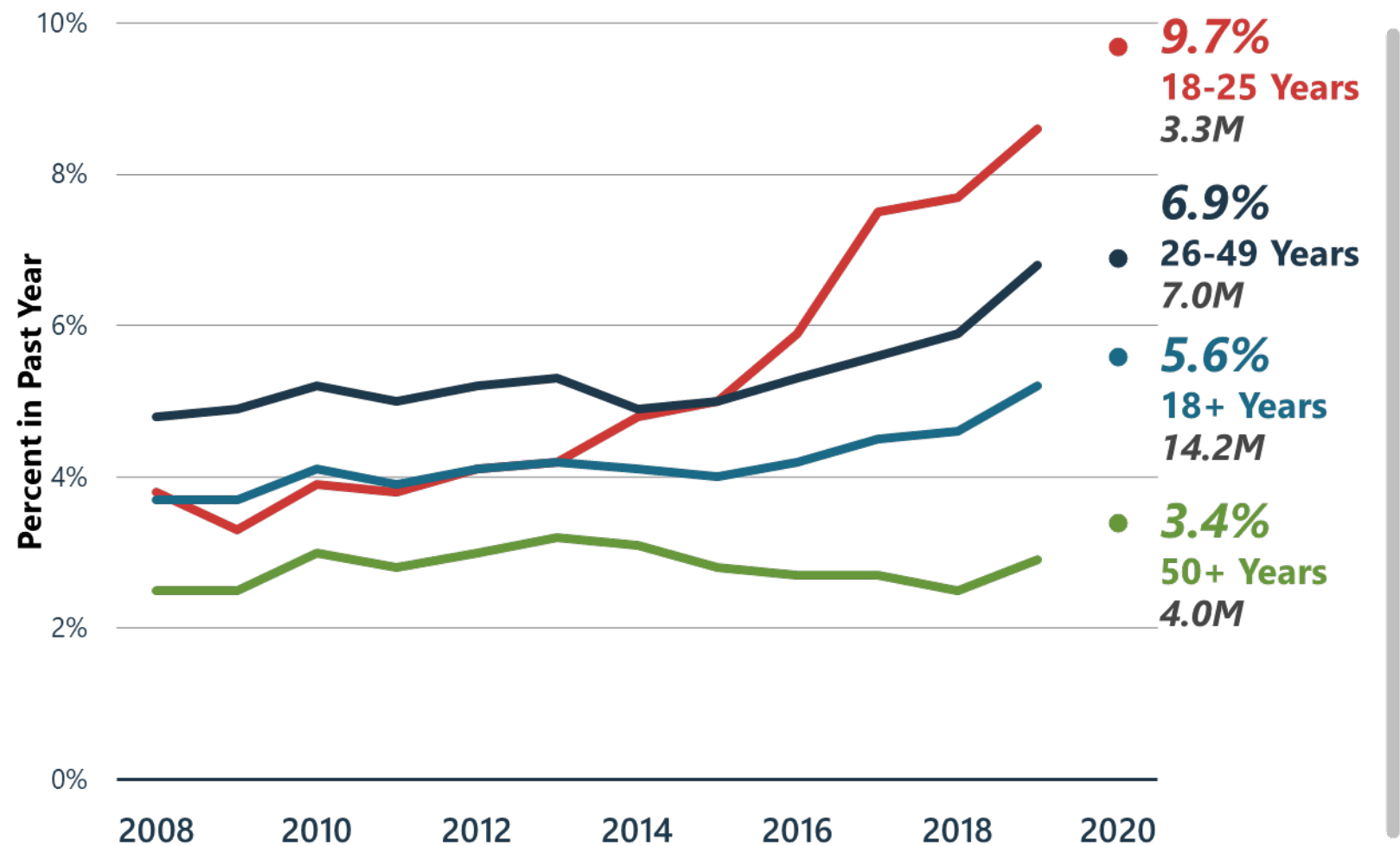




Background and Data

Serious Mental Illness (SMI) in Past Year: Among Adults Aged 18+

PAST YEAR, 2008-2020 NSDUH, 18+



42.4% got NO treatment



37.0% got NO treatment

There is no line between 2019 and 2020 to indicate caution should be used when comparing estimates between 2020 and prior years because of methodological changes for 2020. Due to these changes, significance testing between 2020 and prior years was not performed. See the 2020 National Survey on Drug Use and Health: Methodological Summary and Definitions for details.

Substance Use and Older Adults

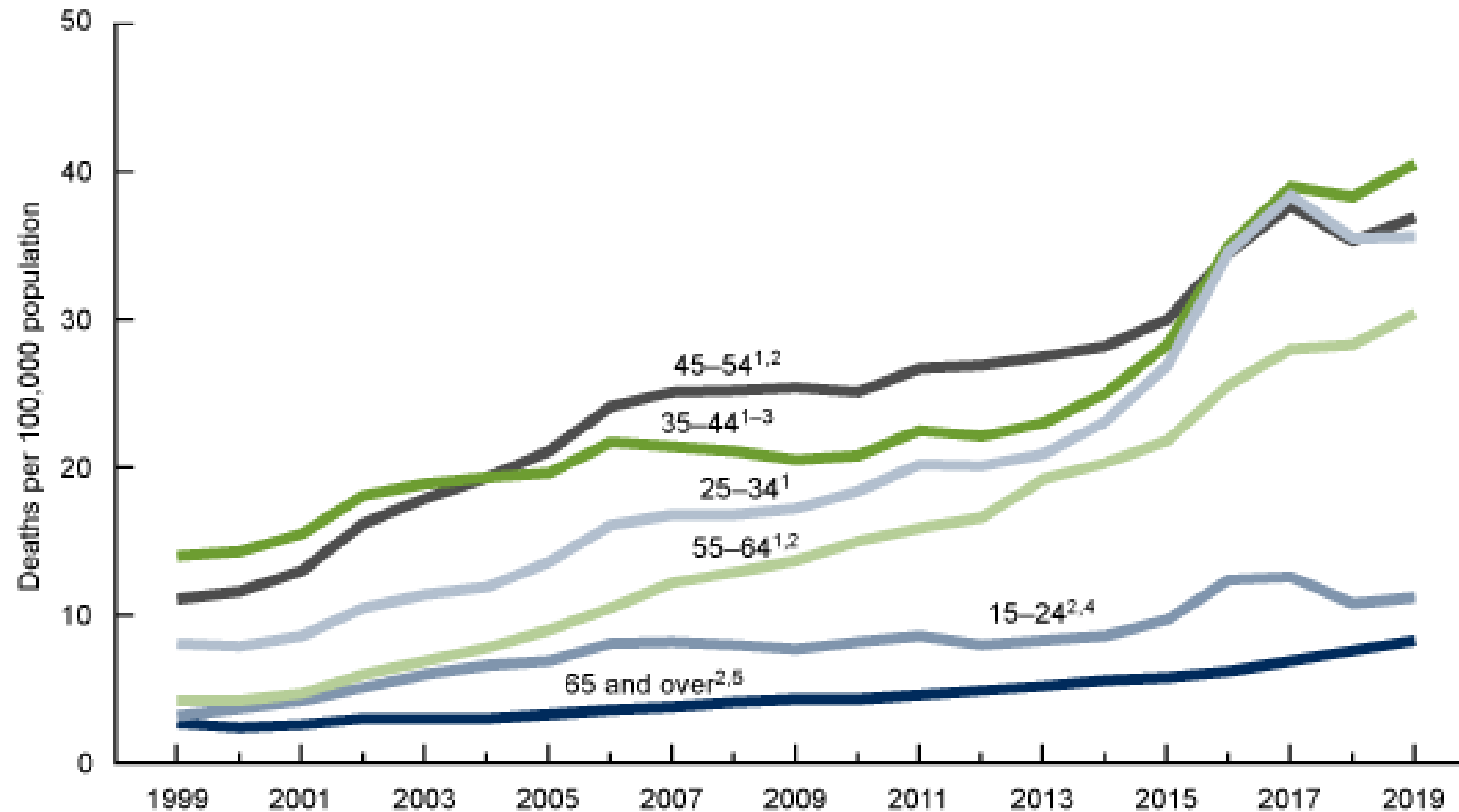


Figure 2. Drug overdose death rates among those aged 15 and over, by selected age group: United States, 1999–2019

Hedegaard H, Miniño AM, Warner M. Drug overdose deaths in the United States, 1999– 2019. NCHS Data Brief, no 394. Hyattsville, MD: National Center for Health Statistics. 2020.

Higher drug use of the boomer generation

- 50-54 - lifetime illicit drug use = 55.2%
- 55-59 - lifetime illicit drug use = 53.0%
- 60-64 - lifetime illicit drug use = 56.5%
- 65+ - lifetime illicit drug use – 38.0%

2021 NSDUH Data (Table 1.6B)

Treatment and Recovery

- In 2021,
 - Approximately 54% of people 50+ said they received services for their mental illness (Table 6.44B)
 - Approximately 3.5 million people 50+ were classified as needing treatment for illicit drug use – 11% said they received treatment at a specialized facility (Table 5.33A)
- 9,295,000 people 50 or older considered themselves to be in SUD recovery (Table 8.41A)
- 12,415,000 people 50 or older considered themselves to be in MH recovery (Table 8.41A)

Suicide Rates by Age

- Suicide continues to be a particularly urgent problem among older adults.
- In 2021, those 85+ had the highest suicide rate of any age group (22.4 per 100,000 individuals), with those 75-84 with the second highest rate (19.6 per 100,000 individuals)
(<https://www.cdc.gov/suicide/suicide-data-statistics.html>)

Resources



SAMHSA Helplines and Treatment Locators



<https://findtreatment.samhsa.gov/>



<https://988lifeline.org/>



<https://www.samhsa.gov/find-help/national-helpline>

SAMHSA Materials

- [Resources for Older Adults](#)
- [Engage, Educate, and Empower for Equity: E4 Center of Excellence for Behavioral Health Disparities in Aging](#)
- [Psychosocial Interventions for Older Adults With Serious Mental Illness](#)
- [Get Connected Toolkit](#)
- [Revised TIP 26: Treating Addiction in Older Adults](#)
- [Growing Older: Providing Integrated Care for an Aging Population](#) – SAMHSA-HRSA
- [Depression of Depression in Older Adults EBP Toolkit](#)
- [Good Mental Health is Ageless](#) – brochure

What is a Certified Community Behavioral Health Clinic (CCBHC)?

- Brings a comprehensive range of services together, incorporating evidence-based practices and other supports based on a community needs assessment



- Provides for improved access to mental health and substance use disorder (MH/SUD) services, including increased capacity to respond to MH+SUD crises
- Serves individuals across the lifespan with mental health and/or substance use disorders
- Must meet CCBHC Certification Criteria
- In FY 2022, people ages 65 and older made up 4.4% of people directly served with SAMHSA CCBHC grant funds,* a much smaller proportion than their percent of the total US population (17.1%).**

* SAMHSA Program Data

** US Census Data, 2021

Updated Criteria Continue the Structure set in Statute

1. Staffing

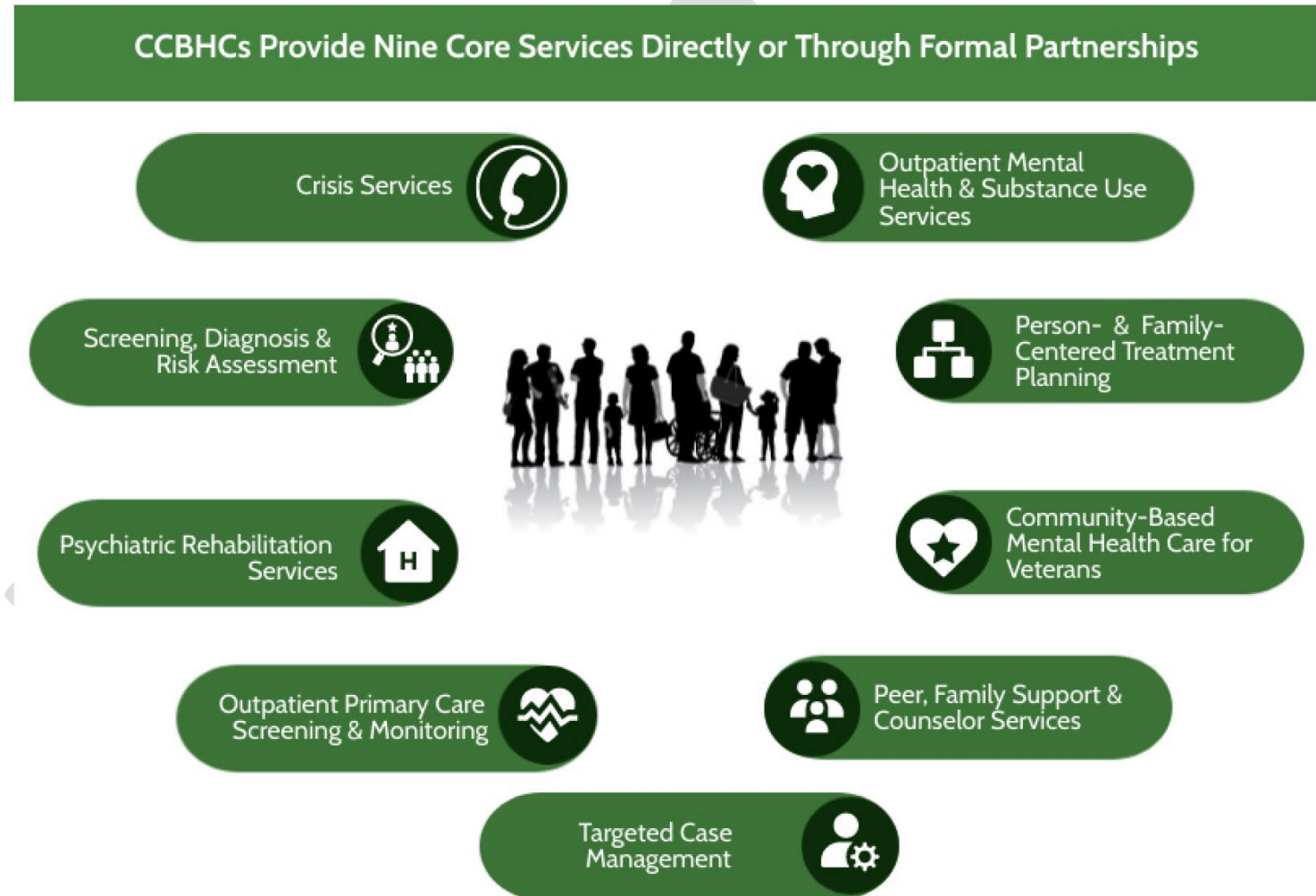
2. Availability and Accessibility of Services

3. Care Coordination

4. Scope of Services

5. Quality and Other Reporting

6. Organizational Authority and Governance

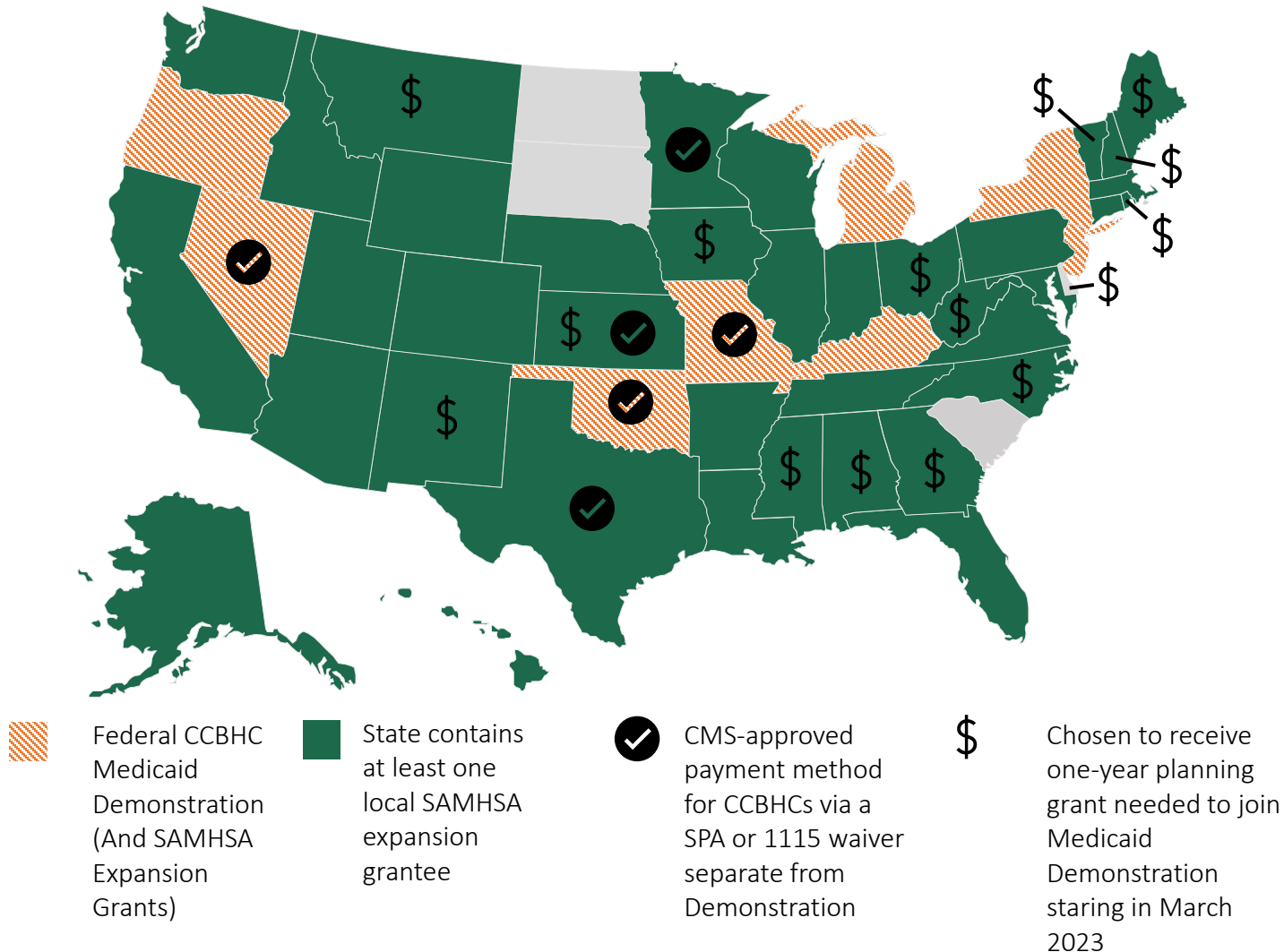


Updated Criteria: <https://www.samhsa.gov/sites/default/files/ccbhc-criteria-2023.pdf>

Original Criteria: https://www.samhsa.gov/sites/default/files/programs_campaigns/ccbhc-criteria.pdf

Map of CCBHCs Across the United States (as of May 2023)

- There are now more than 500 CCBHCs across 46 states, the District of Columbia, Guam, the U.S. Virgin Islands, and Puerto Rico
- CCBHCs can be supported through the CCBHC Medicaid Demonstration, SAMHSA's CCBHC Expansion Grants, or through independent state programs.



CCBHC Example



- Received a CCBHC expansion grant in 2021
- Had preexisting services for older adults (e.g., geriatric care management, respite, nursing home transition and diversion, community integration and support programs, and caregiver supports) run by parent organization
- Able to cross-refer between older adult services and CCBHC services
- Connects people with peer support which can help with isolation in aging
- Has developed specialty in areas like hoarding disorder
- CCBHC program has enabled stronger community outreach to older adults related to behavioral health

Thank you.

Eric Weakly

eric.weakly@samhsa.hhs.gov

david.devoursney@samhsa.hhs.gov

[**www.samhsa.gov**](http://www.samhsa.gov)

1-877-SAMHSA-7 (1-877-726-4727) • 1-800-487-4889 (TDD)